

7. Service Specification

Route: 8/N8

QC44701

This Service Specification forms section 7 of the ITT and should be read in conjunction with the ITT document, Version 1 dated 29 September 2011.

Route 8/N8 is being tendered with the additional vehicle options of using New Bus for London (NBfL) vehicles, owned by the Corporation and leased to the successful tenderer for the period of the Route Agreement. The accompanying letter gives further details to assist tenderers with their bids for NBfL options, together with the vehicle lease. Section 2 below gives details of the NBfL options required.

You are formally invited to tender for the provision of the bus service detailed below and in accordance with this Service Specification. Tenderers must ensure that a Compliant Tender is submitted and this will only be considered for evaluation if all parts of the Tender documents, as set out in section 11, have been received by the Corporation by the Date of Tender. The Tender must be fully completed in the required format, in accordance with the Instructions to Tenderers. A Compliant Tender must comply fully with the requirements of the Framework Agreement; adhere to the requirements of the Service Specification; and reflect the price of operating the Services with new vehicles.

Terminus Points	Route No. 8: Bow Church to Oxford Circus, Holles Street West Side Route No. N8: Hainault, The Lowe to Oxford Circus, Holles Street West Side
Contract Basis	Incentivised
Commencement Date	28 th June 2014
Vehicle Type	87 capacity, dual door, double deck buses OR New Bus for London (NBfL) (see attached letter and lease)
Current Maximum Approved Dimensions	10.5 metres long and 2.55 metres wide
New Vehicles Mandatory	Yes
Hybrid Price Required	Yes
Sponsored Route	No
Advertising Rights	Operator (with NBFL, internal rights Corporation)
Minimum Performance Standard - Route No. 8	Average Excess Wait Time - No more than 1.20 minutes
Extension Threshold - Route No. 8	Average Excess Wait Time Threshold - 1.05 minutes
Minimum Operated Mileage Standard - Route No. 8	No less than 98.00%
Average Excess Wait Time - Route No. N8	Average Excess Wait Time - No more than 1.00 minutes
Minimum Operated Mileage Standard - Route No. N8	No less than 99.00%

7. Service Specification - continued

The Date of Tender for this ITT is: No later than 12 Noon on Monday 12th August 2013

Tenderers should refer to section 3 of Part A for the Service Specification Explanatory Notes and Appendix B of section 5 for the Example Service Specification of the ITT document.

SERVICE SPECIFICATION

- 1) SERVICE SPEC - ROUTE SPECIFICATION INFORMATION
- 2) NOTES
- 3) SCHEDULE REQUIREMENTS & PINCHPOINTS
- 4) OPERATIONAL CONSIDERATIONS
- 5) ROUTE RECORD, CURRENT PERFORMANCE, QSI BY TIME OF DAY, IBUS MILEAGE & QSI POINTS

2) NOTES

Proposed Changes:

At this time, the Corporation expects to implement a change to the existing service prior to the commencement of the new Route Agreement for Route Nos. 8 & N8.

- One additional journey is specified at 0801 ex Bow Church on Mondays to Fridays. This journey should interwork with the main service.
- Two additional early morning journeys are specified ex Bow Church on Mondays to Fridays.

Tenderers should note that the following alterations (subject to consultation) are proposed as part of this Service Specification for introduction with the new Route Agreement:

- Route No. 8 is specified to terminate at Bromley High Street stand not Bow bus garage. Buses will set down in Bow Road and then proceed direct to Bromley High Street to stand. Buses will then proceed from Bromley High Street via Blackwall Tunnel Northern Approach and Bow Interchange to Bow Road and pick up at stop 31359. Thus towards Bow Church, buses will not serve Fairfield Road.
- **Please see Section 5 for a full list of streets traversed and standing arrangements.**
- **Tenderers must identify the cost of the Nightly element of this service separately.**

Route No. 8 has been identified as a potential candidate for New Bus for London (NBfL) vehicles. Four options are specified:

Option 1

- 87 capacity, dual door, double deck buses (see 1.1-1.3).

Operators should provide the following prices:

- 1.1. **Annual diesel price - based on minimum 5 year contract.**
- 1.2. **Annual hybrid price - based on minimum 5 year contract.**
- 1.3. **Annual hybrid price - with upfront payment of capital difference between diesel and hybrid for 5 year contract.**

Option 2

- NBfL with one person operation (OPO) (i.e. no conductor) at all times.

Proposed Changes (continued):

Option 3

- NBfL with crew operation (TPO) (i.e. with conductor) at the times specified below:

Day	Ex Bow Church	Ex Oxford Circus, Holles Street West Side
Monday - Friday	0545 - 1800	0645 - 1900
Saturday	0700 - 1800	0800 - 1900
Sunday and Bank Holidays	0830 - 1700	0930 - 1800

- One person operation (OPO) (i.e. no conductor) at all other times.

Option 4

- NBfL with one person operation (OPO) (i.e. no conductors) at all times on Route No 8.
- 87 capacity, dual door, double deck buses on Route No. N8.

All tender prices should be based on the gross fuel cost exclusive of BSOG payments which will not be claimable from DfT after 1st October 2013.

3) SCHEDULE REQUIREMENTS & PINCHPOINTS

3.1) MONDAY TO FRIDAY SCHEDULE REQUIREMENTS & PINCHPOINTS

Bow Church to Oxford Circus, Holles Street West Side			Oxford Circus, Holles Street West Side to Bow Church		
First departure no later than 0505.			First departure no later than 0540.		
0500 - 0525	Every 20 minutes		0535 - 0620	Every 10 minutes	
0526 - 0615	Every 10 minutes		0621 - 0700	Every 7 minutes	
0616 - 0645	Every 7 minutes		0701 - 0940	Every 6 minutes	
0646 - 0930	Every 6 minutes		0941 - 1525	Every 6-7 minutes (9 buses per hour)	
0931 - 1500	Every 6-7 minutes (9 buses per hour)		1526 - 1925	Every 6 minutes	
1501 - 1900	Every 6 minutes		1926 - 2115	Every 7 minutes	
1901 - 2000	Every 7 minutes		2116 - 2400	Every 10 minutes	
2001 - 0030	Every 10 minutes				
Last departure no earlier than 0025.			Last departure no earlier than 2355.		
Pinchpoints					
Holborn Station	0730 - 0900	6 minutes	Bethnal Green Station	0740 - 0910	6 minutes
	1500 - 1550	7 minutes		1500 - 1620	7 minutes
	1551 - 1630	6 minutes		1621 - 1630	6 minutes

Bow Church to Oxford Circus, Holles Street	
0801	One journey

The above journey should interwork with the main service.

3.2) SATURDAY AND GOOD FRIDAY SCHEDULE REQUIREMENTS & PINCHPOINTS

Bow Church to Oxford Circus, Holles Street West Side			Oxford Circus, Holles Street West Side to Bow Church		
First departure no later than 0535.			First departure no later than 0540.		
0530 - 0725	Every 10 minutes		0535 - 0810	Every 10 minutes	
0726 - 0805	Every 8 minutes		0811 - 0855	Every 8 minutes	
0806 - 0900	Every 7 minutes		0856 - 0930	Every 7 minutes	
0901 - 1845	Every 6-7 minutes (9 buses per hour)		0931 - 1855	Every 6-7 minutes (9 buses per hour)	
1846 - 1945	Every 7 minutes		1856 - 2035	Every 7 minutes	
1946 - 0030	Every 10 minutes		2036 - 2400	Every 10 minutes	
Last departure no earlier than 0025.			Last departure no earlier than 2355.		
Pinchpoints					
Holborn Station	0925 - 1100	7 minutes	Bethnal Green Station	0930 - 1100	7 minutes

3) SCHEDULE REQUIREMENTS & PINCHPOINTS - continued

3.3) SUNDAY AND PUBLIC HOLIDAYS (EXCEPT GOOD FRIDAY AND CHRISTMAS DAY) SCHEDULE REQUIREMENTS & PINCHPOINTS

Bow Church to Oxford Circus, Holles Street West Side		Oxford Circus, Holles Street West Side to Bow Church			
First departure no later than 0535.		First departure no later than 0540.			
0530 - 0715	Every 20 minutes	0535 - 2400	Every 10 minutes		
0716 - 0030	Every 10 minutes				
Last departure no earlier than 0025.		Last departure no earlier than 2355.			
Pinchpoints					
Holborn Station	1025 - 1125	10 minutes	Bethnal Green Station	1005 - 1135	10 minutes

Tenderers must identify the cost of the Boxing Day element of this service separately.

3.4) SUNDAY NIGHTS/MONDAY MORNINGS TO THURSDAY NIGHTS/FRIDAY MORNINGS

Hainault, The Lowe to Oxford Circus, Holles Street West Side		Oxford Circus, Holles Street West Side to Hainault, The Lowe			
First departure no later than 2400.		First departure no later than 0005.			
2355 - 0455	Every 20 minutes	2400 - 0530	Every 20 minutes		
Last departure no earlier than 0450.		Last departure no earlier than 0525.			

Tenderers must identify the cost of the Nightly element of this service separately.

3) SCHEDULE REQUIREMENTS & PINCHPOINTS - continued

3.5) FRIDAY NIGHTS/SATURDAYS MORNINGS

Hainault, The Lowe to Oxford Circus, Holles Street West Side		Oxford Circus, Holles Street West Side to Hainault, The Lowe	
First departure no later than 2400.		First departure no later than 0010.	
2355 - 0455	Every 15 minutes	0005 - 0530	Every 15 minutes
Last departure no earlier than 0450.		Last departure no earlier than 0525.	

Stratford, The Grove to Oxford Circus, Holles Street West Side		Oxford Circus, Holles Street West Side to Stratford Bus Station	
First departure no later than 0040.		First departure no later than 0005.	
0035 - 0515	Every 15 minutes	2400 - 0525	Every 15 minutes
Last departure no earlier than 0510.		Last departure no earlier than 0520.	

Journeys operating between Hainault, The Lowe and Oxford Circus, Holles Street West Side should be timed to fully interwork with journeys between Stratford, The Grove and Oxford Circus, Holles Street West Side (i.e. a joint frequency of every 7-8 minutes (8 buses per hour) should be provided between Stratford, The Grove and Oxford Circus, Holles Street West Side during the stated times).

Journeys operating between Oxford Circus, Holles Street West Side and Hainault, The Lowe should be timed to fully interwork with journeys between Oxford Circus, Holles Street West Side and Stratford Bus Station (i.e. a joint frequency of every 7-8 minutes (8 buses per hour) should be provided between Oxford Circus, Holles Street West Side and Stratford Bus Station during the stated times).

3) SCHEDULE REQUIREMENTS & PINCHPOINTS - continued

3.6) SATURDAYS NIGHTS/SUNDAYS MORNINGS

Hainault, The Lowe to Oxford Circus, Holles Street West Side		Oxford Circus, Holles Street West Side to Hainault, The Lowe	
First departure no later than 2400.		First departure no later than 0010.	
2355 - 0450	Every 15 minutes	0005 - 0530	Every 15 minutes
0451 - 0625	Every 20 minutes		
Last departure no earlier than 0630.		Last departure no earlier than 0525.	

Stratford, The Grove to Oxford Circus, Holles Street West Side		Oxford Circus, Holles Street West Side to Stratford Bus Station	
First departure no later than 0040.		First departure no later than 0005.	
0035 - 0515	Every 15 minutes	2400 - 0525	Every 15 minutes
Last departure no earlier than 0510.		Last departure no earlier than 0520.	

Journeys operating between Hainault, The Lowe and Oxford Circus, Holles Street West Side should be timed to fully interwork with journeys between Stratford, The Grove and Oxford Circus, Holles Street West Side (i.e. a joint frequency of every 7-8 minutes (8 buses per hour) should be provided between Stratford, The Grove and Oxford Circus, Holles Street West Side during the stated times).

Journeys operating between Oxford Circus, Holles Street West Side and Hainault, The Lowe should be timed to fully interwork with journeys between Oxford Circus, Holles Street West Side and Stratford Bus Station (i.e. a joint frequency of every 7-8 minutes (8 buses per hour) should be provided between Oxford Circus, Holles Street West Side and Stratford Bus Station during the stated times).

Tenderers must identify the cost of the Nightly element of this service separately.

4) OPERATIONAL CONSIDERATIONS

- 4.1) Route No. 8 should interwork with Route No. N8 to form a seamless 24 hour service between Old Ford, Parnell Road (from this direction) and Oxford Circus, Holles Street West Side on Saturdays and Sundays and between Oxford Circus, Holles Street West Side (from this direction) and Old Ford, Parnell Road on all days. On Mondays to Fridays, the service should overlap between Old Ford, Parnell Road (from this direction) and Oxford Circus, Holles Street West Side.
- 4.2) Route Nos. 8 & N8 can suffer from unpredictable traffic delays in the Bethnal Green, Shoreditch, Liverpool Street and Oxford Circus areas.
- 4.3) Crossrail will connect the City, Canary Wharf, the West End and Heathrow Airport to commuter areas east and west of the capital. Major construction of the railway began in 2010, with services expected to commence in 2018. The construction impacts of Crossrail could affect Route Nos. 8 & N8 and it is anticipated that some passenger demand for Route Nos. 8 & N8 may shift to this line when it opens. Route Nos. 8 & N8 will be reviewed closer to the opening date.

5) ROUTE RECORD, CURRENT PERFORMANCE, QSI BY TIME OF DAY, IBUS MILEAGE & QSI POINTS

- 5.1) ROUTE RECORD
As per Busnet printout.
- 5.2) CURRENT PERFORMANCE
As per current print out.
- 5.3) QSI BY TIME OF DAY
As per current print out.
- 5.4) IBUS MILEAGE & QSI POINTS
As per current print out.

LONDON BUSES - ROUTE DESCRIPTION

ROUTE 8: Bow - Oxford Circus

Date of Structural Change: 28 June 2014.

Date of Service Change: 28 June 2014.

Reason for Issue: New Tender.

STREETS TRAVERSED

Towards Oxford Circus: Bow Road, Bow Interchange, Blackwall Tunnel Northern Approach, Wick Lane, Tredegar Road, Parnell Road, Old Ford Road, St Stephen's Road, Roman Road, Bethnal Green Road, Shoreditch High Street, Norton Folgate, Bishopsgate, Threadneedle Street, Mansion House Street, Poultry, Cheapside, Newgate Street, Holborn Viaduct, Holborn Circus, Holborn, High Holborn, New Oxford Street, Oxford Street, Regent Street, Hanover Street, Hanover Square, Harewood Place, Holles Street.

Towards Bow: Holles Street, Cavendish Square, Cavendish Place, Mortimer Street, Great Portland Street, Oxford Street, New Oxford Street, Bloomsbury Way, Vernon Place, Theobald's Road, Drake Street, Procter Street, High Holborn, Holborn, Holborn Circus, Holborn Viaduct, Newgate Street, King Edward Street, Angel Street, St Martin's Le Grand, Cheapside, Poultry, Mansion House Street, Threadneedle Street, Bishopsgate, Norton Folgate, Shoreditch High Street, Bethnal Green Road, Roman Road, St Stephen's Road, Old Ford Road, Parnell Road, Tredegar Road, Wick Lane, Blackwall Tunnel Northern Approach, Bow Interchange, Bow Road.

AUTHORISED STANDS, CURTAILMENT POINTS, & BLIND DESCRIPTIONS

Please note that only stands, curtailment points, & blind descriptions as detailed in this contractual document may be used.

BROMLEY-BY-BOW HIGH STREET

Public stand for one bus on north side of Bromley High Street, commencing at the western end of Alton House and extending 17 metres west.

Buses proceed from Bow Road via Bromley High Street to stand, departing via Bromley High Street, Blackwall Tunnel Northern Approach and Bow Interchange to Bow Road. Set down in Bow Road, at Stop L (FC14 - Bow Church, Last Stop on LOR: FC14 - Bow Church) and pick up in Bow Road, at Stop E (31359 - Bow Church, First Stop on LOR: 31359 - Bow Church).

AVAILABILITY:	At any time.
OPERATING RESTRICTIONS:	No more than 3 buses on Route 8 should be scheduled to stand at any one time.
MEAL RELIEFS:	No meal relief vehicles to stand at any time.
FERRY VEHICLES:	No ferry vehicles to park on stand at any time.
BLIND DISPLAY:	Bromley-by-Bow.

OLD FORD, RUSTON STREET (from OXFORD CIRCUS)

Public stand for two buses on south side of Ruston Street, commencing 53 metres west of Parnell Road and extending 19 metres east.

Buses proceed from Old Ford Road via Wendon Street and Ruston Street to stand, departing via Ruston Street and Parnell Road to Old Ford Road. Set down in Old Ford Road, at Stop ON (1099 - Parnell Road, Last Stop on LOR: 1099 - Parnell Road) and pick up in Old Ford Road, at Stop OP (1098 - Parnell Road, First Stop on LOR: 1098 - Parnell Road).

AVAILABILITY:	At any time.
OPERATING RESTRICTIONS:	Unscheduled curtailments only.
MEAL RELIEFS:	No meal relief vehicles to stand at any time.
FERRY VEHICLES:	No ferry vehicles to park on stand at any time.
BLIND DISPLAY:	Old Ford.

ROMAN ROAD, GROVE ROAD (from OXFORD CIRCUS)

Buses proceed from Roman Road via Grove Road departing to Roman Road. Set down in Roman Road, at Stop HC (18062 - Smart Street, Last Stop on LOR: 18062 - Smart Street) and pick up in Roman Road, at Stop RT (956 - Haverfield Green / Grove Road, First Stop on LOR: 956 - Haverfield Green / Grove Road).

AVAILABILITY:	At any time.
OPERATING RESTRICTIONS:	Turning Point Only - Buses must not stand
BLIND DISPLAY:	Roman Road, Grove Road.

SHOREDITCH CHURCH, HIGH STREET (from OXFORD CIRCUS)

Public stand on east side of Shoreditch High Street, commencing 14 metres north of a point opposite centre of Batemans Row and extending 33 metres north.

Buses proceed from Shoreditch High Street via Great Eastern Street, Curtain Road, Old Street and Shoreditch High Street to stand, departing to Shoreditch High Street. Set down in Shoreditch High Street, at Stop E (19259 - Shoreditch High Street Station #, Last Stop on LOR: 19259 - Shoreditch High Street Station #) and pick up in Shoreditch High Street, at Stop D (20803 - Commercial Street / Worship Street, First Stop on LOR: 20803 - Commercial Street / Worship Street).

AVAILABILITY:	At any time.
OPERATING RESTRICTIONS:	Unscheduled curtailments only.
MEAL RELIEFS:	No meal relief vehicles to stand at any time.
FERRY VEHICLES:	No ferry vehicles to park on stand at any time.
BLIND DISPLAY:	Shoreditch.
OTHER INFORMATION:	-After 1900 on Mondays to Fridays and all day on Saturdays and Sundays.

LIVERPOOL STREET STATION, BISHOPSGATE (from Bow)

Buses proceed from Bishopsgate via Wormwood Street, London Wall, Moorgate, South Place, Eldon Street, Blomfield Street, London Wall and Wormwood Street departing to Bishopsgate. Set down in Bishopsgate, at Stop L (2116 - Liverpool Street Station <> #, Last Stop on LOR: 2116 - Liverpool Street Station <> #) and pick up in Bishopsgate, at Stop F (768 - Liverpool Street Station <> #, First Stop on LOR: 768 - Liverpool Street Station <> #).

AVAILABILITY:	At any time.
OPERATING RESTRICTIONS:	Turning Point Only - Buses must not stand
BLIND DISPLAY:	Liverpool Street.

ST. PAUL'S STATION, KING EDWARD STREET

Public stand for four buses on west side of King Edward Street, commencing 45 metres north of northern kerb line of Angel Street and extending 45 metres south.

From Bow.

Buses proceed from Newgate Street via King Edward Street to stand, departing via King Edward Street, Little Britain, Montague Street, Museum Of London Roundabout and St Martin's Le Grand to Cheapside. Set down in Newgate Street, at Stop SQ (BP3442 - St Paul's Station <>), Last Stop on LOR: BP3442 - St Paul's Station <>) and pick up in Cheapside, at Stop SY (BP5575 - St Paul's Station <>), First Stop on LOR: BP5575 - St Paul's Station <>).

From Oxford Circus.

Buses proceed from Newgate Street via King Edward Street to stand, departing via King Edward Street, Little Britain, Montague Street, Museum Of London Roundabout and St Martin's Le Grand to Newgate Street. Set down in Newgate Street, at Stop ST (8586 - King Edward Street, Last Stop on LOR: 8586 - King Edward Street) and pick up in Newgate Street, at Stop SQ (BP3442 - St Paul's Station <>), First Stop on LOR: BP3442 - St Paul's Station <>).

AVAILABILITY:	At any time.
OPERATING RESTRICTIONS:	Unscheduled curtailments only.
MEAL RELIEFS:	No meal relief vehicles to stand at any time.
FERRY VEHICLES:	No ferry vehicles to park on stand at any time.
BLIND DISPLAY:	St. Paul's.

HOLBORN CIRCUS, CHARTERHOUSE STREET [SOUTH SIDE] (from Bow)

Public stand for four buses on south side of Charterhouse Street commencing 8 metres east of Ely Place and extending 44 metres east.

Buses proceed from Holborn Viaduct via Snow Hill, West Smithfield, Farringdon Street and Charterhouse Street to stand, departing via Charterhouse Street and Holborn Circus to Holborn Viaduct. Set down in Holborn Viaduct, at Stop HK (1156 - City Thameslink Station #, Last Stop on LOR: 1156 - City Thameslink Station #) and pick up in Holborn Viaduct, at Stop K (2018 - Holborn Circus, First Stop on LOR: 2018 - Holborn Circus).

AVAILABILITY:	At any time.
OPERATING RESTRICTIONS:	Unscheduled curtailments only.
MEAL RELIEFS:	No meal relief vehicles to stand at any time.
FERRY VEHICLES:	No ferry vehicles to park on stand at any time.
BLIND DISPLAY:	City Thameslink.

HOLBORN STATION, NEW OXFORD STREET (from Bow)

Public offside stand for three buses on north side of New Oxford Street, commencing 33 metres west of Bury Place and extending east.

Buses proceed from High Holborn via New Oxford Street to stand, departing via New Oxford Street to Bloomsbury Way. Set down in High Holborn, at Stop K (1057 - Holborn Station <>, Last Stop on LOR: 1057 - Holborn Station <>) and pick up in Bloomsbury Way, at Stop WB (29844 - Museum Street, First Stop on LOR: 29844 - Museum Street).

AVAILABILITY: At any time.
OPERATING RESTRICTIONS: Unscheduled curtailments only.
MEAL RELIEFS: No meal relief vehicles to stand at any time.
FERRY VEHICLES: No ferry vehicles to park on stand at any time.
BLIND DISPLAY: Holborn.

TOTTENHAM COURT ROAD STATION, ST GILES HIGH STREET (from Bow)

Buses proceed from New Oxford Street via Shaftesbury Avenue, High Holborn and St Giles High Street departing to New Oxford Street. Set down in New Oxford Street, at stop R (BP5294 - High Holborn, Last Stop on LOR: BP5294 - High Holborn) and pick up in New Oxford Street, at stop Z (14456 - New Oxford Street, First Stop on LOR: 14456 - New Oxford Street).

AVAILABILITY: At any time.
OPERATING RESTRICTIONS: **Turning Point Only - Buses must not stand**
BLIND DISPLAY: Holborn.

OXFORD CIRCUS, HOLLES STREET, WEST SIDE

Public stand for 6 buses on west side of Holles Street commencing 14 metres south of Cavendish Square and extending 76 metres south.

Buses proceed from Holles Street direct to stand, departing to Holles Street. Set down in Holles Street, on stand (BP4269 - Holles Street, Last Stop on LOR: BP4269 - Holles Street) and pick up in Holles Street, at Stop OG (34846 - Holles Street, First Stop on LOR: 34846 - Holles Street).

AVAILABILITY: At any time.
OPERATING RESTRICTIONS: No more than 2 buses on Route 8 should be scheduled to stand at any one time.
MEAL RELIEFS: No meal relief vehicles to stand at any time.
FERRY VEHICLES: No ferry vehicles to park on stand at any time.
BLIND DISPLAY: Oxford Circus.
OTHER INFORMATION: No toilet facilities available.

LONDON BUSES - ROUTE DESCRIPTION

ROUTE N8: Hainault, The Lowe - Oxford Circus

Date of Structural Change: 28 June 2014.

Date of Service Change: 28 June 2014.

Reason for Issue: New Tender.

STREETS TRAVERSED

Towards Oxford Circus: Manford Way, The Lowe, New North Road, Fencepiece Road, Fullwell Cross, Barkingside High Street, Cranbrook Road, Gants Hill Cross, Eastern Avenue, Redbridge Roundabout, Eastern Avenue, Harrier Avenue, Cambridge Park, Blake Hall Road, Bush Road, Leytonstone High Road, Gainsborough Road, Lemna Road, Kirkdale Road, Leytonstone Bus Station, Church Lane, Leytonstone High Road, Leytonstone Road, The Grove, Broadway, Stratford High Street, Bow Interchange, Blackwall Tunnel Northern Approach, Wick Lane, Tredegar Road, Parnell Road, Old Ford Road, St Stephen's Road, Roman Road, Bethnal Green Road, Shoreditch High Street, Norton Folgate, Bishopsgate, Threadneedle Street, Mansion House Street, Poultry, Cheapside, Newgate Street, Holborn Viaduct, Holborn Circus, Holborn, High Holborn, New Oxford Street, Oxford Street, Regent Street, Hanover Street, Hanover Square, Harewood Place, Holles Street.

Towards Hainault, The Lowe: Holles Street, Cavendish Square, Cavendish Place, Regent Street, Oxford Street, New Oxford Street, Bloomsbury Way, Vernon Place, Theobald's Road, Drake Street, Procter Street, High Holborn, Holborn, Holborn Circus, Holborn Viaduct, Newgate Street, King Edward Street, Angel Street, St Martin's Le Grand, Cheapside, Poultry, Mansion House Street, Threadneedle Street, Bishopsgate, Norton Folgate, Shoreditch High Street, Bethnal Green Road, Roman Road, St Stephen's Road, Old Ford Road, Parnell Road, Tredegar Road, Wick Lane, Blackwall Tunnel Northern Approach, Bow Interchange, Stratford High Street, Great Eastern Road, The Grove, Leytonstone Road, Leytonstone High Road, Green Man Roundabout, Cambridge Park, Kingfisher Avenue, Eastern Avenue, Redbridge Roundabout, Eastern Avenue, Gants Hill Cross, Cranbrook Road, Barkingside High Street, Fullwell Cross, Fencepiece Road, New North Road, Kielder Close, Staggart Green, Manford Way.

AUTHORISED STANDS, CURTAILMENT POINTS, & BLIND DESCRIPTIONS

Please note that only stands, curtailment points, & blind descriptions as detailed in this contractual document may be used.

HAINAULT, THE LOWE

Public stand for one bus on north side of Manford Way, commencing opposite party wall of Nos 198/200 and extending 19 metres west.

Buses proceed from Manford Way direct to stand, departing to Manford Way. Set down in Manford Way, at Stop Y (BP2156 - The Lowe, Last Stop on LOR: BP2156 - The Lowe) and pick up in Manford Way, at Stop Z (35437 - The Lowe, First Stop on LOR: 35437 - The Lowe).

AVAILABILITY: At any time.
OPERATING RESTRICTIONS: No more than 1 bus on Route N8 should be scheduled to stand at any one time.
MEAL RELIEFS: No meal relief vehicles to stand at any time.
FERRY VEHICLES: No ferry vehicles to park on stand at any time.
BLIND DISPLAY: Hainault, The Lowe.

BARKINGSIDE HIGH STREET (from Oxford Circus)

Public stand for three buses on east side of Barkingside High Street, commencing opposite the party wall of Nos 155/157 and extending 33 metres north.

Buses proceed from Barkingside High Street via Fullwell Cross and Barkingside High Street to stand, departing to Barkingside High Street. Set down in Barkingside High Street, at stop A (34310 - Fullwell Cross, Last Stop on LOR: 34310 - Fullwell Cross) and pick up in Barkingside High Street, at stop N (29018 - Barkingside Police Station, First Stop on LOR: 29018 - Barkingside Police Station).

AVAILABILITY: At any time.
OPERATING RESTRICTIONS: Unscheduled curtailments only
MEAL RELIEFS: No meal relief vehicles to stand at any time.
FERRY VEHICLES: No ferry vehicles to park on stand at any time.
BLIND DISPLAY: Barkingside.

GANTS HILL STATION (from Oxford Circus)

Public stand for two buses on north side (offside) of Perth Road, commencing 62.5 metres east of Bramley Crescent and extending 23 metres east.

Buses proceed from Eastern Avenue via Gants Hill Cross, Cranbrook Road, Bramley Crescent and Perth Road to stand, departing via Perth Road, Eastern Avenue and Gants Hill Cross to Eastern Avenue. Set down in Eastern Avenue, at stop EB (4321 - Gants Hill Station <>), Last Stop on LOR: 4321 - Gants Hill Station <>) and pick up in Eastern Avenue, at stop EV (1325 - Gants Hill Roundabout, First Stop on LOR: 1325 - Gants Hill Roundabout).

AVAILABILITY: At any time.
OPERATING RESTRICTIONS: Unscheduled curtailments only
MEAL RELIEFS: No meal relief vehicles to stand at any time.
FERRY VEHICLES: No ferry vehicles to park on stand at any time.
BLIND DISPLAY: Gants Hill.

REDBRIDGE STATION (from Oxford Circus)

Private stand for three buses on station forecourt in two parts:

1. For one bus on east side of station buildings, commencing in line with the centre of the station car park entrance and extending 10 metres southwards.
2. For two buses in marked bays on north side of station buildings.

Buses proceed from Eastern Avenue via Redbridge Roundabout, Eastern Avenue and Redbridge Station Forecourt to stand, departing via Redbridge Station Forecourt, Redbridge Lane East and Redbridge Roundabout to Eastern Avenue. Set down in Eastern Avenue, at Stop R (R0326 - Nutter Lane, Last Stop on LOR: R0326 - Nutter Lane) and pick up in Eastern Avenue, at Stop RD (LE146 - Redbridge Lane West, First Stop on LOR: LE146 - Redbridge Lane West).

AVAILABILITY: At any time.
OPERATING RESTRICTIONS: Unscheduled curtailments only
MEAL RELIEFS: No meal relief vehicles to stand at any time.
FERRY VEHICLES: No ferry vehicles to park on stand at any time.
BLIND DISPLAY: Redbridge Station.

WANSTEAD, WOODBINE PLACE (from Oxford Circus)

Public stand for five buses on north side of Woodbine Place, commencing 5 metres west of Wanstead High Street and extending 58 metres west.

Buses proceed from Cambridge Park via Wanstead High Street and Woodbine Place to stand, departing via Woodbine Place and Wanstead High Street to Cambridge Park. Set down in Cambridge Park, at Stop B (9326 - Wanstead Station <>, Last Stop on LOR: 9326 - Wanstead Station <>) and pick up in Cambridge Park, at Stop C (2998 - Wanstead Station <> / George Green, First Stop on LOR: 2998 - Wanstead Station <> / George Green).

AVAILABILITY: At any time.
OPERATING RESTRICTIONS: No more than 1 bus on Route N8 should be scheduled to stand at any one time.
MEAL RELIEFS: No meal relief vehicles to stand at any time.
FERRY VEHICLES: No ferry vehicles to park on stand at any time.
BLIND DISPLAY: Wanstead.

LEYTONSTONE BUS STATION (from Oxford Circus)

Private stand for five buses in bus station on north side of Kirkdale Road.

Buses proceed from Leytonstone High Road via Gainsborough Road, Lemna Road, Kirkdale Road and Leytonstone Bus Station to stand, departing to Leytonstone Bus Station. Set down in Leytonstone High Road, at stop M (BP2754 - Kirkdale Road, Last Stop on LOR: BP2754 - Kirkdale Road) and pick up in Leytonstone Bus Station, at stop W (BP1543 - Leytonstone Station <>, First Stop on LOR: BP1543 - Leytonstone Station <>).

AVAILABILITY: At any time.
OPERATING RESTRICTIONS: Unscheduled curtailments only
MEAL RELIEFS: No meal relief vehicles to stand at any time.
FERRY VEHICLES: No ferry vehicles to park on stand at any time.
BLIND DISPLAY: Leytonstone.

STRATFORD BUS STATION

Private stand for up to 14 buses facing north in Stratford Bus Station on west side of Great Eastern Road.

From Hainault, The Lowe.

Buses proceed from Broadway via Great Eastern Road, Station Street, Stratford Bus Station and Stratford Bus Station to stand, departing via Stratford Bus Station and Stratford Bus Station to Great Eastern Road. Set down in Stratford Broadway, at Stop E (8019 - Stratford Centre, Last Stop on LOR: 8019 - Stratford Centre) and pick up in Great Eastern Road, at Stop C (BP974 - Stratford Bus Station <>#[dlr], First Stop on LOR: BP974 - Stratford Bus Station <>#[dlr]).

From Oxford Circus.

Buses proceed from Stratford High Street via Great Eastern Road, Station Street, Stratford Bus Station and Stratford Bus Station to stand, departing via Stratford Bus Station, Stratford Bus Station and Great Eastern Road to The Grove. Set down in Station Street, at Alighting Point AP1 (BP5307 - Stratford Bus Station <> # [dlr], Last Stop on LOR: 2070 - Stratford High St Stn [dlr] / Carpenters Road) and pick up in The Grove, at Stop R (36927 - Stratford Library, First Stop on LOR: 36927 - Stratford Library).

AVAILABILITY:	At any time.
OPERATING RESTRICTIONS:	Unscheduled curtailments only.
MEAL RELIEFS:	No meal relief vehicles to stand at any time.
FERRY VEHICLES:	No ferry vehicles to park on stand at any time.
BLIND DISPLAY:	Stratford.

BOW BUS GARAGE

Private stand for three buses in bay 2 of Stagecoach's Bow Bus Garage on east side of Fairfield Road.

From Hainault, The Lowe.

Buses proceed from Stratford High Street via Bow Interchange, Bow Road, Fairfield Road and Bow Bus Garage to stand, departing via Bow Bus Garage, Fairfield Road, Bow Road and Bow Interchange to Stratford High Street. Set down in Stratford High Street, at stop P (4875 - Bow Flyover, Last Stop on LOR: 4875 - Bow Flyover) and pick up in Stratford High Street, at stop M (2066 - Marshgate Lane, First Stop on LOR: 2066 - Marshgate Lane).

From Oxford Circus.

Buses proceed from Parnell Road via Tredegar Road, Wick Lane, Blackwall Tunnel Northern Approach, Bow Interchange, Bow Road, Fairfield Road and Bow Bus Garage to stand, departing via Bow Bus Garage, Fairfield Road, Bow Road, Bow Interchange, Blackwall Tunnel Northern Approach, Wick Lane and Tredegar Road to Parnell Road. Set down in Parnell Road, at Stop PD (9248 - Roman Road Market, Last Stop on LOR: 9248 - Roman Road Market) and pick up in Parnell Road, at Stop PK (9249 - Roman Road Market, First Stop on LOR: 9249 - Roman Road Market).

AVAILABILITY:	At any time.
OPERATING RESTRICTIONS:	Unscheduled curtailments only
MEAL RELIEFS:	No meal relief vehicles to stand at any time.
FERRY VEHICLES:	No ferry vehicles to park on stand at any time.
BLIND DISPLAY:	Old Ford.

ROMAN ROAD, GROVE ROAD

From Hainault, The Lowe.

Buses proceed from Roman Road via Grove Road departing to Roman Road. Set down in Roman Road, at Stop RS (18024 - Medway Road, Last Stop on LOR: 18024 - Medway Road) and pick up in Roman Road, at Stop RK (R0311 - Grove Road, First Stop on LOR: R0311 - Grove Road).

From Oxford Circus.

Buses proceed from Roman Road via Grove Road departing to Roman Road. Set down in Roman Road, at Stop HC (18062 - Smart Street, Last Stop on LOR: 956 - Haverfield Green / Grove Road) and pick up in Roman Road, at Stop RT (956 - Haverfield Green / Grove Road, First Stop on LOR: R0311 - Grove Road).

AVAILABILITY:	At any time.
OPERATING RESTRICTIONS:	Turning Point Only - Buses must not stand
BLIND DISPLAY:	Roman Road, Grove Road.

SHOREDITCH CHURCH, HIGH STREET (from Oxford Circus)

Public stand on east side of Shoreditch High Street, commencing 14 metres north of a point opposite centre of Batemans Row and extending 33 metres north.

Buses proceed from Shoreditch High Street via Great Eastern Street, Curtain Road, Old Street and Shoreditch High Street to stand, departing to Shoreditch High Street. Set down in Shoreditch High Street, at Stop E (19259 - Shoreditch High Street Station #, Last Stop on LOR: 20803 - Commercial Street / Worship Street) and pick up in Shoreditch High Street, at Stop D (20803 - Commercial Street / Worship Street, First Stop on LOR: 19259 - Shoreditch High Street Station #).

AVAILABILITY:	At any time.
OPERATING RESTRICTIONS:	Unscheduled curtailments only.
MEAL RELIEFS:	No meal relief vehicles to stand at any time.
FERRY VEHICLES:	No ferry vehicles to park on stand at any time.
BLIND DISPLAY:	Shoreditch.
OTHER INFORMATION:	-After 1900 and before 0700 on Mondays to Fridays and all day on Saturdays and Sundays.

LIVERPOOL STREET STATION, BISHOPSGATE (from HAINAULT, THE LOWE)

Buses proceed from Bishopsgate via Wormwood Street, London Wall, Moorgate, South Place, Eldon Street, Blomfield Street, London Wall and Wormwood Street departing to Bishopsgate. Set down in Bishopsgate, at Stop L (2116 - Liverpool Street Station <> #, Last Stop on LOR: 2116 - Liverpool Street Station <> #) and pick up in Bishopsgate, at Stop F (768 - Liverpool Street Station <> #, First Stop on LOR: 768 - Liverpool Street Station <> #).

AVAILABILITY:	At any time.
OPERATING RESTRICTIONS:	Turning Point Only - Buses must not stand
BLIND DISPLAY:	Liverpool Street.

ST. PAUL'S STATION, KING EDWARD STREET

Public stand for four buses on west side of King Edward Street, commencing 45 metres north of northern kerb line of Angel Street and extending 45 metres south.

From Hainault, The Lowe.

Buses proceed from Newgate Street via King Edward Street to stand, departing via King Edward Street, Little Britain, Montague Street, Museum Of London Roundabout and St Martin's Le Grand to Cheapside. Set down in Newgate Street, at Stop SQ (BP3442 - St Paul's Station <>), Last Stop on LOR: BP3442 - St Paul's Station <>) and pick up in Cheapside, at Stop SY (BP5575 - St Paul's Station <>), First Stop on LOR: BP5575 - St Paul's Station <>).

From Oxford Circus.

Buses proceed from Newgate Street via King Edward Street to stand, departing via King Edward Street, Little Britain, Montague Street, Museum Of London Roundabout and St Martin's Le Grand to Newgate Street. Set down in Newgate Street, at Stop ST (8586 - King Edward Street, Last Stop on LOR: 8586 - King Edward Street) and pick up in Newgate Street, at Stop SQ (BP3442 - St Paul's Station <>), First Stop on LOR: BP3442 - St Paul's Station <>).

AVAILABILITY:	At any time.
OPERATING RESTRICTIONS:	Unscheduled curtailments only.
MEAL RELIEFS:	No meal relief vehicles to stand at any time.
FERRY VEHICLES:	No ferry vehicles to park on stand at any time.
BLIND DISPLAY:	St. Paul's.

HOLBORN CIRCUS, CHARTERHOUSE STREET [SOUTH SIDE] (from HAINAULT, THE LOWE)

Public stand for four buses on south side of Charterhouse Street commencing 8 metres east of Ely Place and extending 44 metres east.

Buses proceed from Holborn Viaduct via Snow Hill, West Smithfield, Farringdon Street and Charterhouse Street to stand, departing via Charterhouse Street and Holborn Circus to Holborn Viaduct. Set down in Holborn Viaduct, at Stop HK (1156 - City Thameslink Station #, Last Stop on LOR: 1156 - City Thameslink Station #) and pick up in Holborn Viaduct, at Stop K (2018 - Holborn Circus, First Stop on LOR: 2018 - Holborn Circus).

AVAILABILITY:	At any time.
OPERATING RESTRICTIONS:	Unscheduled curtailments only.
MEAL RELIEFS:	No meal relief vehicles to stand at any time.
FERRY VEHICLES:	No ferry vehicles to park on stand at any time.
BLIND DISPLAY:	City Thameslink.

HOLBORN STATION, NEW OXFORD STREET (from HAINAULT, THE LOWE)

Public offside stand for three buses on north side of New Oxford Street, commencing 33 metres west of Bury Place and extending east.

Buses proceed from High Holborn via New Oxford Street to stand, departing via New Oxford Street to Bloomsbury Way. Set down in High Holborn, at stop K (1057 - Holborn Station <>, Last Stop on LOR: 1057 - Holborn Station <>) and pick up in Bloomsbury Way, at stop WB (29844 - Museum Street, First Stop on LOR: 29844 - Museum Street).

AVAILABILITY: At any time.
OPERATING RESTRICTIONS: Unscheduled curtailments only
MEAL RELIEFS: No meal relief vehicles to stand at any time.
FERRY VEHICLES: No ferry vehicles to park on stand at any time.
BLIND DISPLAY: Holborn.

OXFORD CIRCUS, HOLLES STREET, WEST SIDE

Public stand for 6 buses on west side of Holles Street commencing 14 metres south of Cavendish Square and extending 76 metres south.

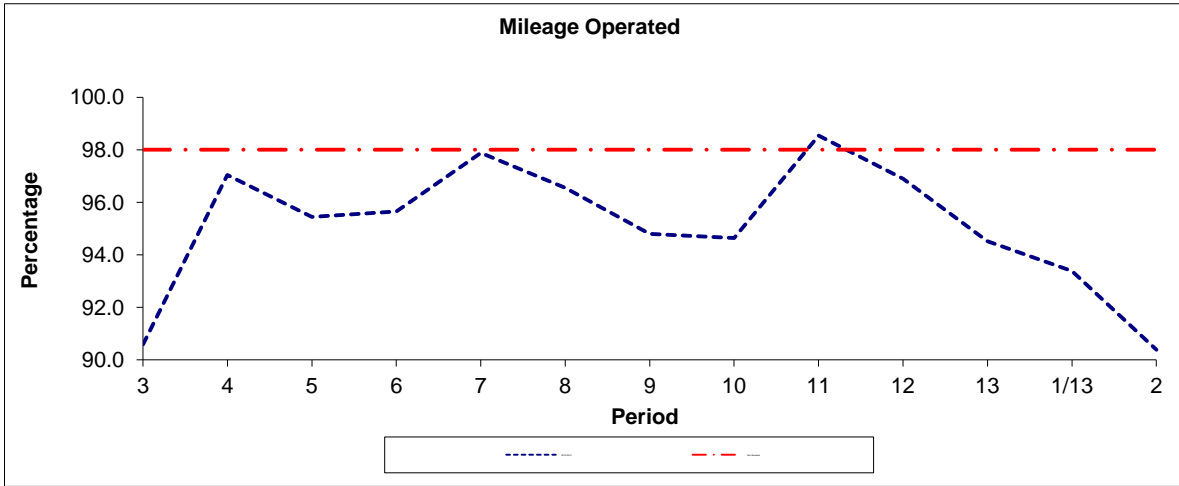
Buses proceed from Holles Street direct to stand, departing to Holles Street. Set down in Holles Street, at alighting point (BP4269 - Holles Street, Last Stop on LOR: BP4269 - Holles Street) and pick up in Holles Street, at Stop OG (34846 - Holles Street, First Stop on LOR: 34846 - Holles Street).

AVAILABILITY: At any time.
OPERATING RESTRICTIONS: No more than 2 buses on Route N8 should be scheduled to stand at any one time.
MEAL RELIEFS: No meal relief vehicles to stand at any time.
FERRY VEHICLES: No ferry vehicles to park on stand at any time.
BLIND DISPLAY: Oxford Circus.
OTHER INFORMATION: Toilet facilities available 24 hours at Princes St.

PART B - PERFORMANCE STATISTICS

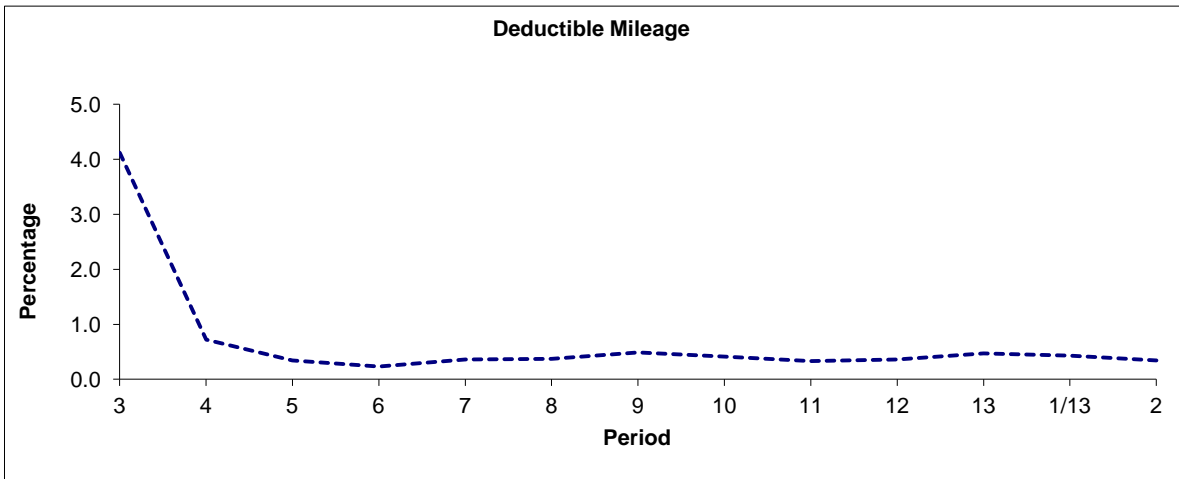
Route 8

Mileage Operated



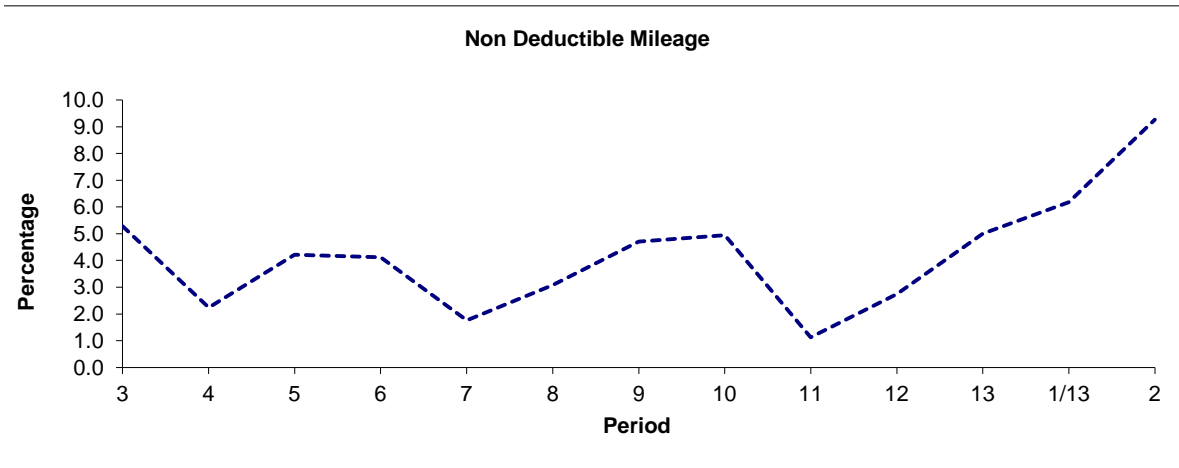
Period	3	4	5	6	7	8	9	10	11	12	13	1/13	2
2012/2013	90.60	97.04	95.45	95.65	97.88	96.55	94.80	94.64	98.54	96.90	94.52	93.39	90.39
Min Standard	98.00	98.00	98.00	98.00	98.00	98.00	98.00	98.00	98.00	98.00	98.00	98.00	98.00

Deductible Mileage



Period	3	4	5	6	7	8	9	10	11	12	13	1/13	2
2012/2013	4.12	0.72	0.34	0.23	0.36	0.37	0.49	0.41	0.33	0.36	0.47	0.43	0.34

Non Deductible Mileage



Period	3	4	5	6	7	8	9	10	11	12	13	1/13	2
2012/2013	5.28	2.24	4.21	4.12	1.76	3.08	4.71	4.95	1.13	2.74	5.01	6.18	9.27

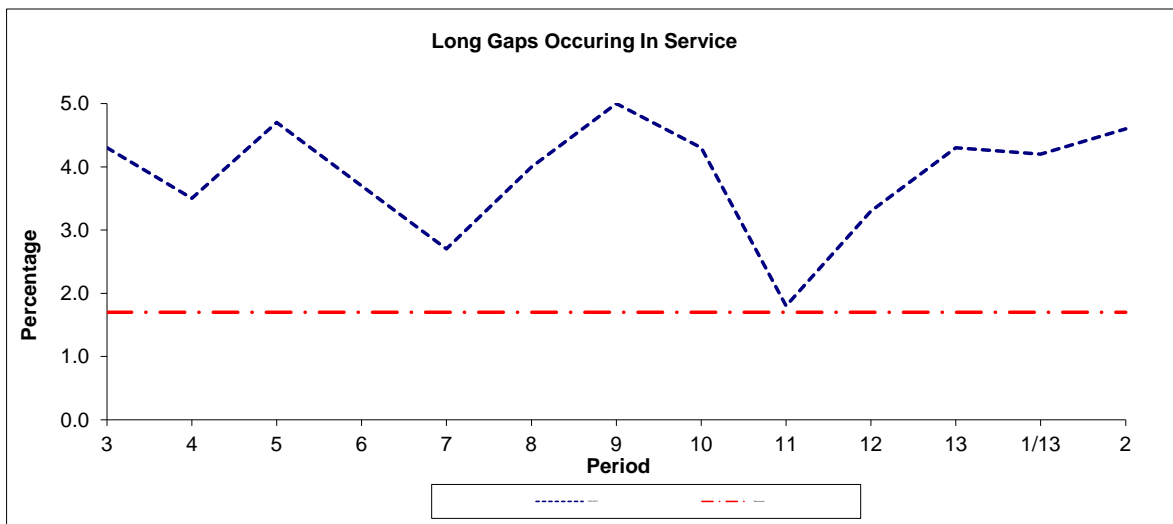
Note : Mileage is based on 4 weeks data
Performance affected by industrial action in p3 2012/13.

PART B - PERFORMANCE STATISTICS

Route 8



Period	3	4	5	6	7	8	9	10	11	12	13	1/13	2
2012-2013	1.34	1.21	1.36	1.24	1.09	1.30	1.49	1.37	0.85	1.16	1.39	1.32	1.43
Min Standard	1.20	1.20	1.20	1.20	1.20	1.20	1.20	1.20	1.20	1.20	1.20	1.20	1.20



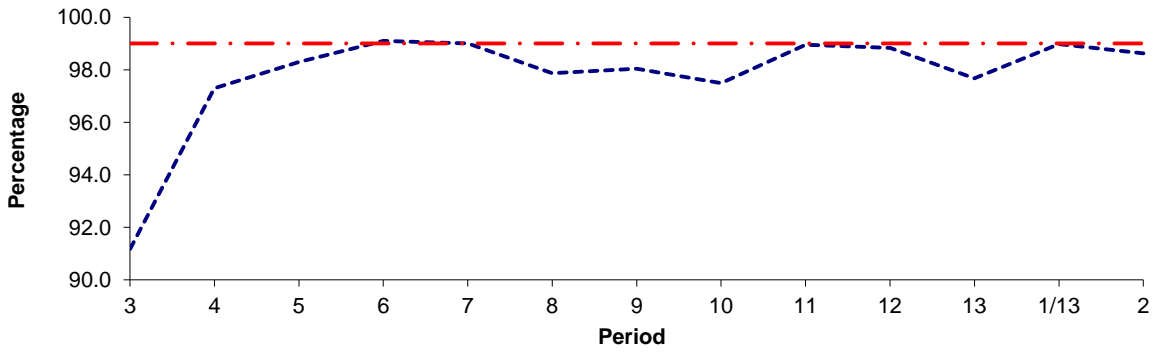
Period	3	4	5	6	7	8	9	10	11	12	13	1/13	2
2012-2013	4.3	3.5	4.7	3.7	2.7	4.0	5.0	4.3	1.8	3.3	4.3	4.2	4.6
Benchmark	1.7	1.7	1.7	1.7	1.7	1.7	1.7	1.7	1.7	1.7	1.7	1.7	1.7

Note : Reliability is actual performance under full iBus (4 weeks data).
 Minimum Standards and Benchmarks are those applicable under the new contract.

PART B - PERFORMANCE STATISTICS

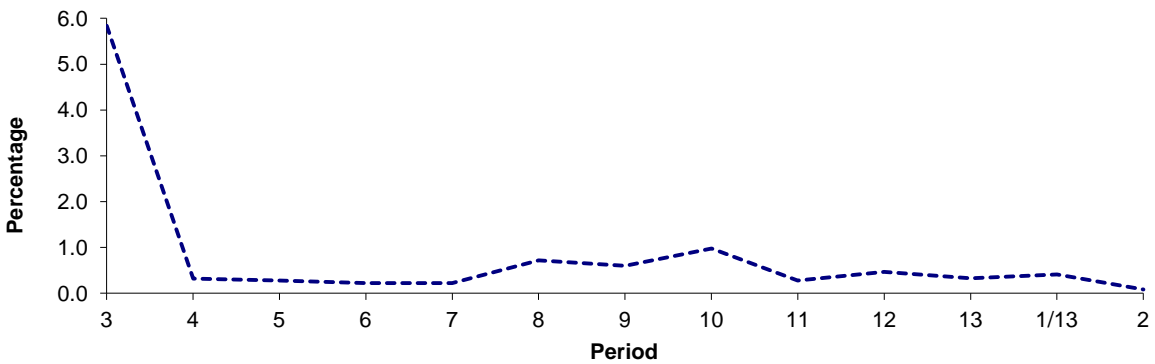
Route N8

Mileage Operated



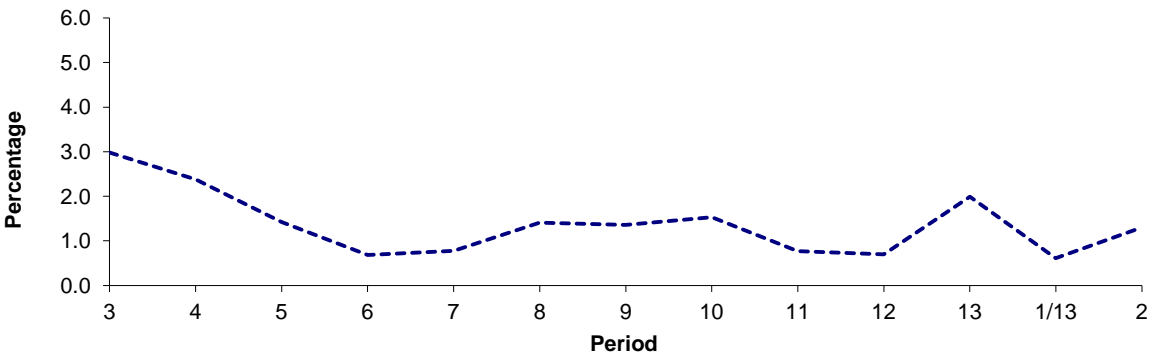
Period	3	4	5	6	7	8	9	10	11	12	13	1/13	2
2012/2013	91.18	97.30	98.30	99.10	99.00	97.87	98.04	97.49	98.95	98.83	97.68	98.98	98.62
Min Standard	99.00	99.00	99.00	99.00	99.00	99.00	99.00	99.00	99.00	99.00	99.00	99.00	99.00

Deductible Mileage



Period	3	4	5	6	7	8	9	10	11	12	13	1/13	2
2012/2013	5.84	0.32	0.28	0.22	0.22	0.72	0.60	0.98	0.28	0.47	0.33	0.41	0.08

Non Deductible Mileage

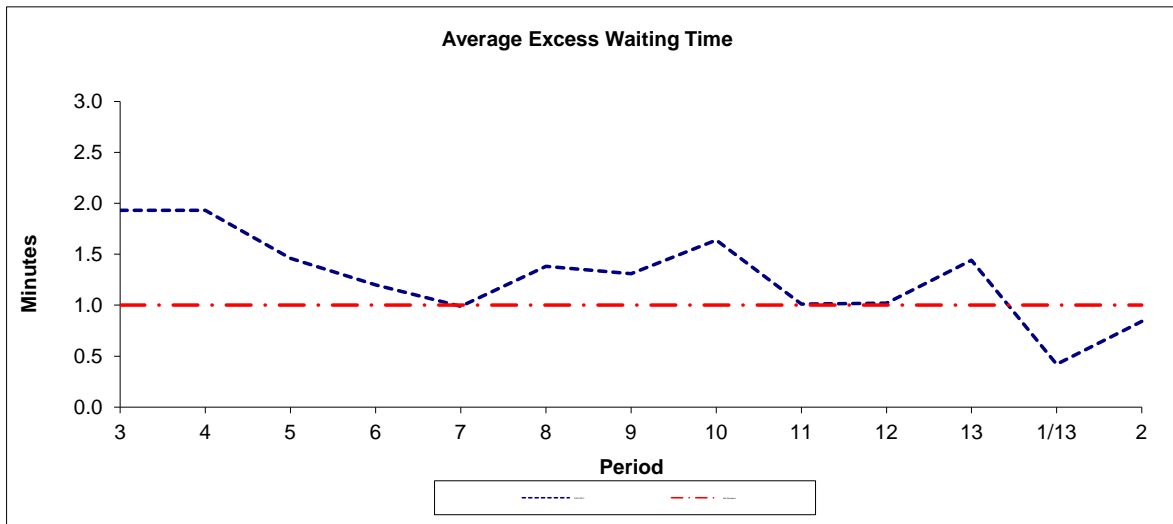


Period	3	4	5	6	7	8	9	10	11	12	13	1/13	2
2012/2013	2.98	2.38	1.42	0.68	0.78	1.41	1.36	1.53	0.77	0.70	1.99	0.61	1.30

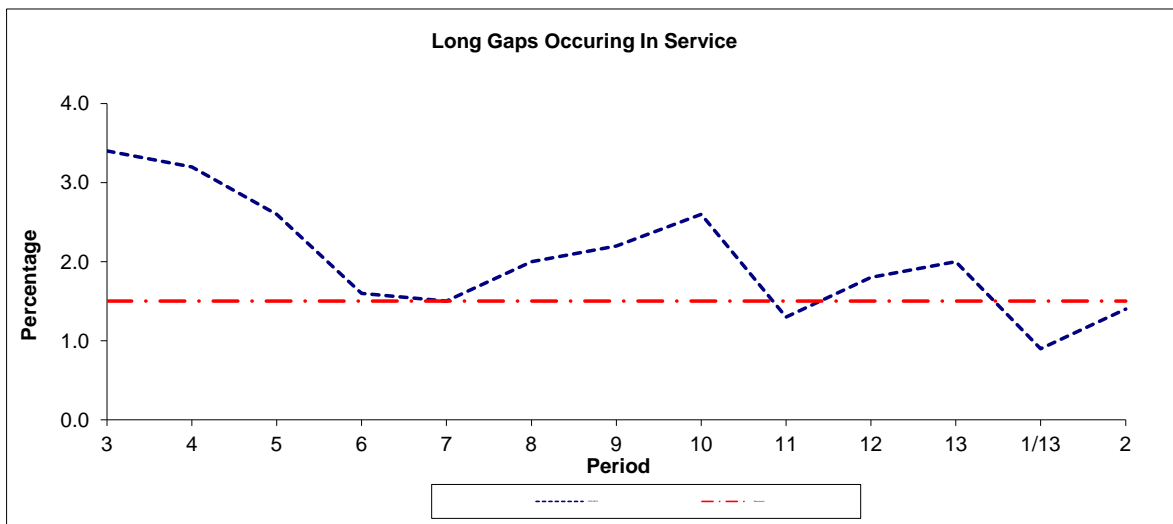
Note : Mileage is based on 4 weeks data
 Performance affected by industrial action in p3 2012/13.

PART B - PERFORMANCE STATISTICS

Route N8



Period	3	4	5	6	7	8	9	10	11	12	13	1/13	2
2012-2013	1.93	1.93	1.46	1.20	0.99	1.38	1.31	1.64	1.01	1.02	1.44	0.42	0.84
Min Standard	1.00	1.00	1.00	1.00	1.00	1.00	1.00	1.00	1.00	1.00	1.00	1.00	1.00



Period	3	4	5	6	7	8	9	10	11	12	13	1/13	2
2012-2013	3.4	3.2	2.6	1.6	1.5	2.0	2.2	2.6	1.3	1.8	2.0	0.9	1.4
Benchmark	1.5	1.5	1.5	1.5	1.5	1.5	1.5	1.5	1.5	1.5	1.5	1.5	1.5

Note : Reliability is actual performance under full iBus (4 weeks data).
 Minimum Standards and Benchmarks are those applicable under the new contract.

ROUTE 8 - FULL iBUS RESULTS BY TIME OF DAY
QUARTERS 1 to 4 2012/13 (01/04/12 - 31/03/13)

MONDAY - FRIDAY

Time Period	Expected Buses	On AVL (%)	Scheduled Waiting Time (SWT) (mins)	Excess Waiting Time (EWT) (mins)	Actual Waiting Time (AWT) (mins)	Probability of Waiting < 10 mins (%)	Probability of Waiting 10-20 mins (%)	Probability of Waiting 20-30 mins (%)	Probability of Waiting > 30 mins (%)	Long Gaps (%)	Maximum Gap (mins)
0500 - 0700	29,823.	98.2	4.54	0.63	5.17	90.8	8.7	0.4	0.1	0.8	47
0700 - 1000	126,177.	98.7	3.08	0.84	3.92	94.9	4.8	0.2	0.0	2.5	50
1000 - 1300	115,570.	96.3	3.31	1.24	4.55	90.6	8.5	0.7	0.2	4.1	73
1300 - 1600	118,790.	94.3	3.23	1.47	4.70	89.5	9.6	0.8	0.1	4.9	57
1600 - 1900	126,193.	95.4	3.02	1.52	4.54	90.1	9.1	0.7	0.1	5.7	74
1900 - 2200	107,159.	95.4	3.52	1.44	4.96	87.6	11.4	0.9	0.1	4.7	57
2200 - 2400	51,956.	99.4	4.86	1.21	6.06	81.8	17.0	1.2	0.1	1.5	58
Summary	675,668.	96.4	3.30	1.28	4.58	90.4	8.8	0.6	0.1	4.2	74

SATURDAY

Time Period	Expected Buses	On AVL (%)	Scheduled Waiting Time (SWT) (mins)	Excess Waiting Time (EWT) (mins)	Actual Waiting Time (AWT) (mins)	Probability of Waiting < 10 mins (%)	Probability of Waiting 10-20 mins (%)	Probability of Waiting 20-30 mins (%)	Probability of Waiting > 30 mins (%)	Long Gaps (%)	Maximum Gap (mins)
0500 - 0700	5,484.	99.6	5.00	0.64	5.64	87.7	11.7	0.5	0.1	0.9	43
0700 - 1000	20,022.	99.3	3.92	0.79	4.71	91.8	7.9	0.2	0.1	1.0	35
1000 - 1300	22,882.	98.7	3.39	0.94	4.33	92.8	6.9	0.2	0.1	2.2	38
1300 - 1600	23,479.	95.4	3.33	1.41	4.74	89.4	9.6	0.8	0.1	4.4	44
1600 - 1900	23,238.	94.5	3.37	1.56	4.93	88.1	10.8	1.0	0.2	5.0	45
1900 - 2200	19,404.	97.5	4.01	1.65	5.66	82.8	15.6	1.4	0.2	4.5	50
2200 - 2400	10,525.	92.4	4.85	1.95	6.81	75.0	22.1	2.7	0.3	3.6	49
Summary	125,034.	96.7	3.62	1.29	4.91	88.7	10.3	0.8	0.1	3.5	50

SUNDAY AND BANK HOLIDAYS

Time Period	Expected Buses	On AVL (%)	Scheduled Waiting Time (SWT) (mins)	Excess Waiting Time (EWT) (mins)	Actual Waiting Time (AWT) (mins)	Probability of Waiting < 10 mins (%)	Probability of Waiting 10-20 mins (%)	Probability of Waiting 20-30 mins (%)	Probability of Waiting > 30 mins (%)	Long Gaps (%)	Maximum Gap (mins)
0500 - 0700	3,791.	99.7	6.61	0.73	7.34	78.6	17.7	3.2	0.5	2.3	62
0700 - 1000	15,334.	100.7	5.31	0.88	6.19	84.7	14.4	0.7	0.2	0.5	63
1000 - 1300	17,999.	97.9	4.86	0.70	5.55	86.5	13.0	0.4	0.1	0.6	61
1300 - 1600	17,958.	96.1	4.89	1.32	6.21	80.5	17.7	1.4	0.3	1.9	50
1600 - 1900	18,014.	98.2	4.88	1.38	6.26	80.6	17.6	1.7	0.2	2.0	47
1900 - 2200	17,600.	100.1	4.86	1.01	5.87	83.9	15.0	0.9	0.2	1.3	56
2200 - 2400	9,551.	100.5	4.88	1.08	5.97	83.1	15.7	1.0	0.2	1.4	119
Summary	100,247.	98.8	4.94	1.10	6.04	82.8	15.9	1.1	0.2	1.4	119

ALL DAYS

Time Period	Expected Buses	On AVL (%)	Scheduled Waiting Time (SWT) (mins)	Excess Waiting Time (EWT) (mins)	Actual Waiting Time (AWT) (mins)	Probability of Waiting < 10 mins (%)	Probability of Waiting 10-20 mins (%)	Probability of Waiting 20-30 mins (%)	Probability of Waiting > 30 mins (%)	Long Gaps (%)	Maximum Gap (mins)
0500 - 0700	39,098.	98.5	4.69	0.64	5.33	89.9	9.5	0.5	0.1	0.9	62
0700 - 1000	161,533.	99.0	3.26	0.84	4.10	94.2	5.5	0.2	0.0	2.3	63
1000 - 1300	156,451.	96.9	3.50	1.13	4.63	90.5	8.7	0.6	0.1	3.4	73
1300 - 1600	160,227.	94.7	3.42	1.45	4.87	88.5	10.5	0.8	0.1	4.5	57
1600 - 1900	167,445.	95.6	3.23	1.51	4.74	89.0	10.1	0.8	0.2	5.3	74
1900 - 2200	144,163.	96.2	3.73	1.41	5.15	86.5	12.3	1.0	0.1	4.3	57
2200 - 2400	72,032.	98.6	4.86	1.29	6.15	81.1	17.5	1.3	0.1	1.8	119
Summary	900,949.	96.7	3.50	1.26	4.76	89.5	9.7	0.7	0.1	3.8	119

ROUTE N8 - FULL iBUS RESULTS BY TIME OF DAY
QUARTERS 1 to 4 2012/13 (01/04/12 - 31/03/13)

MONDAY - FRIDAY

Time Period	Expected Buses	On AVL (%)	Scheduled Waiting Time (SWT) (mins)	Excess Waiting Time (EWT) (mins)	Actual Waiting Time (AWT) (mins)	Long Gaps (%)
0000 - 0500	124,477.	99.2	9.53	0.84	10.37	0.5
Summary	124,477.	99.2	9.53	0.84	10.37	0.5

SATURDAY

Time Period	Expected Buses	On AVL (%)	Scheduled Waiting Time (SWT) (mins)	Excess Waiting Time (EWT) (mins)	Actual Waiting Time (AWT) (mins)	Long Gaps (%)
0000 - 0500	48,578.	97.3	5.21	1.93	7.14	3.4
Summary	48,578.	97.3	5.21	1.93	7.14	3.4

SUNDAY AND BANK HOLIDAYS

Time Period	Expected Buses	On AVL (%)	Scheduled Waiting Time (SWT) (mins)	Excess Waiting Time (EWT) (mins)	Actual Waiting Time (AWT) (mins)	Long Gaps (%)
0000 - 0500	50,254.	97.3	5.37	2.16	7.53	3.9
Summary	50,254.	97.3	5.37	2.16	7.53	3.9

ALL DAYS

Time Period	Expected Buses	On AVL (%)	Scheduled Waiting Time (SWT) (mins)	Excess Waiting Time (EWT) (mins)	Actual Waiting Time (AWT) (mins)	Long Gaps (%)
0000 - 0500	223,309.	98.4	7.52	1.41	8.93	2.0
Summary	223,309.	98.4	7.52	1.41	8.93	2.0

Transport for London - QSI Points and Mileage

Route **8 (to Bow Church)**

Service change 29264

Date 28/01/2012

Reason for Issu

QSI Points are highlighted in blue.

OUT DIRECTION				
Timing Point Code	Stop Number	Stop Name	Metres	Miles
BOW CH	31359	Bow Church		
	348	Bow Flyover	174	0.11
	9249	Roman Road Market	1149	0.71
OFRDPR	18020	Old Ford Road	226	0.14
	1098	Parnell Road	121	0.08
	18067	Old Ford Road	399	0.25
	6366	Ford Road	332	0.21
	18024	Medway Road	236	0.15
	956	Haverfield Green / Grove Road	374	0.23
	18063	Bonner Street	390	0.24
	2292	Morpeth Street	158	0.10
	4616	Globe Road	141	0.09
BETHSN	BP187	Bethnal Green Station	318	0.20
	1688	Wilmot Street	281	0.17
	18061	Barnet Grove	567	0.35
	1452	Brick Lane	318	0.20
	18059	Shoreditch High Street Station	401	0.25
SHORGE	20803	Commercial Street / Worship Street	290	0.18
	2113	Primrose Street	249	0.15
LVSTBG	2116	Liverpool Street Station	229	0.14
	BP1576	Wormwood Street	297	0.18
	8608	Old Broad Street	326	0.20
BANKSNY	8590	Poultry / Bank Station	396	0.25
	8556	Bread Street	216	0.13
SPLSSN	BP3442	St Paul's Station	352	0.22
	1156	City Thameslink Station	337	0.21
	8571	Holborn Circus	280	0.17
	2019	Holborn Circus / Fetter Lane	165	0.10
	8420	Chancery Lane Station	252	0.16
	1473	Brownlow Street	188	0.12
HOLBSN	1057	Holborn Station	261	0.16
	BP5294	High Holborn	356	0.22
TCTRNO	35030	Tottenham Court Road Station	319	0.20
	165	Oxford Street / Soho Street	298	0.19
	831	Wardour Street	317	0.20
	33924	Great Titchfield Street	263	0.16
OXFCHS	BP4269	Holles Street	641	0.40
Total Route Mileage - Out Direction			11617	7.22
			Metres	Miles

TRANCHE 447ue **End of temporary diversion due to closure of Poultry, in The City**

BACK DIRECTION				
Timing Point Code	Stop Number	Stop Name	Metres	Miles
OXFCHS	34846	Holles Street		
	15783	Great Titchfield Street	856	0.53
	20465	Wardour Street	276	0.17
TCTRNO	14456	New Oxford Street	495	0.31
	29844	Museum Street	306	0.19
HOLBSN	33107	Procter Street	491	0.31
	8419	Brownlow Street	341	0.21
	1472	Chancery Lane Station	209	0.13
	20628	Holborn Circus / Fetter Lane	182	0.11
	2018	Holborn Circus	250	0.16
	1157	City Thameslink Station	182	0.11
SPLSSN	8586	King Edward Street	312	0.19
	BP5575	St Paul's Station	454	0.28
BANKSNY	10352	Bank Station / Poultry	286	0.18
	8606	Bank Station / Threadneedle Street	281	0.17
	8607	Old Broad Street	190	0.12
	BP1575	Wormwood Street	305	0.19
LVSTBG	768	Liverpool Street Station	212	0.13
	2114	Primrose Street	304	0.19
SHORGE	19259	Shoreditch High Street Station	230	0.14
	18058	Bethnal Grn Rd / Sh'Ditch High St Stn	257	0.16
	1451	Brick Lane	315	0.20
	4614	Barnet Grove	395	0.25
	18060	Pollard Row	272	0.17
	1687	Wilmot Street	249	0.15
BETHSN	4615	Bethnal Green Station	227	0.14
	29733	Burnham Street	313	0.19
	2293	Bonner Street	435	0.27
	18062	Smart Street	172	0.11
	R0311	Grove Road	361	0.22
	35218	Medway Road	286	0.18
	35219	Ford Road	158	0.10
	35217	Old Ford Road	331	0.21
	1099	Parnell Road	411	0.26
OFRDPR	9248	Roman Road Market	196	0.12
BOW CH	FC14	Bow Church	1633	1.01
Total Route Mileage - Back Direction			12173	7.56
			Metres	Miles

Transport for London - QSI Points and Mileage

Route **N8** Reason for
 Service change 29990 Re-issue
 Date 30 June 2012

QSI Points are highlighted in blue.

OUT DIRECTION				
Timing Point Code	Stop Number	Stop Name	Metres	Miles
HAINTL S	HAINTL S	HAINAULT, THE LOWE		
HAINTL	35437	Fermie Close	0	0.00
	20885	Tunstall Avenue	256	0.16
	20749	Staggart Green	172	0.11
	20747	Hainault Fire Station	325	0.20
	20745	Beech Grove	276	0.17
	20743	Hainault Station	330	0.21
	20741	Trelawney Road	405	0.25
	15399	New North Road	454	0.28
	15397	Neville Road	332	0.21
	432	Tomswood Hill	270	0.17
BKSDFX	20198	Fullwell Cross	416	0.26
	9613	Waverley Gardens	194	0.12
	29018	Barkingside Police Station	269	0.17
	BP1742	Brandville Gardens	338	0.21
	15395	Redbridge Register Office	182	0.11
	15393	Hamilton Avenue	364	0.23
	13150	Icknield Drive	296	0.18
	15391	Martley Drive	230	0.14
	13558	Gants Hill Station	219	0.14
GTSLSN	1325	Gants Hill Roundabout	318	0.20
	15475	Beehive Lane	402	0.25
	1648	The Drive	501	0.31
REDBSN	1323	Redbridge Stn / Redbridge Roundabout	430	0.27
	LE146	Redbridge Lane West	362	0.22
	15471	Wigram Road	658	0.41
	20907	Wanstead Station	264	0.16
WANSSN	2998	Wanstead Station / George Green	191	0.12
	9319	Felstead Road	428	0.27
	9317	Bush Road	223	0.14
	R0027	Bush Road / Green Man Roundabout	507	0.32
	R0024	Green Man Roundabout	205	0.13
LSTNBS	BP1543	Leytonstone Station	566	0.35
	14561	Harvey Road	316	0.20
	14557	Michael Road	187	0.12
	3211	Leytonstone High Road Station	255	0.16
	14551	Leytonstone Fire Station	377	0.23
	BP3598	Harrow Road	201	0.12
	14548	Harrow Green	192	0.12
	14545	Ranelagh Road	293	0.18
LSTNTH	4761	Leytonstone High Road / Thatched House	156	0.10
	FC12	Janson Road	269	0.17
	8009	Chobham Road	190	0.12
	8013	Maryland Station	255	0.16
	20810	Manbey Grove	319	0.20
STFDTG	36927	Stratford / Romford Road	239	0.15
STFDBY	8019	Stratford Centre	245	0.15
	371	Old Town Hall	122	0.08
	20760	Stratford High St / Carpenters Rd	447	0.28
	4897	Warton Road	221	0.14
	2067	Abbey Lane	382	0.24
BOW ES	4875	Bow Flyover	430	0.27
	9249	Roman Road Market	1291	0.80
OFRDPR	18020	Old Ford Road	226	0.14
	1098	Parnell Road	121	0.08
	18067	Old Ford Road	399	0.25
	6366	Ford Road	332	0.21
	18024	Medway Road	236	0.15
	956	Haverfield Green / Grove Road	374	0.23
	18063	Bonner Street	390	0.24
	2292	Morpeth Street	158	0.10
	4616	Globe Road	141	0.09
BETHSN	BP187	Bethnal Green Station	318	0.20
	1688	Wilmot Street	281	0.17
	18061	Barnet Grove	567	0.35
	1452	Brick Lane	318	0.20
	18059	Shoreditch High Street Station	401	0.25
SHORGE	20803	Commercial Street / Worship Street	290	0.18
	2113	Primrose Street	249	0.15
LVSTBG	2116	Liverpool Street Station	229	0.14
	BP1576	Wormwood Street	297	0.18
	8608	Old Broad Street	326	0.20
BANKSNY	8590	Poultry / Bank Station	406	0.25
	8556	Bread Street	206	0.13
SPLSSN	BP3442	St Paul's Station	352	0.22
	1156	City Thameslink Station	337	0.21
	8571	Holborn Circus	280	0.17
	2019	Holborn Circus / Fetter Lane	165	0.10
	8420	Chancery Lane Station	252	0.16
	1473	Brownlow Street	188	0.12
HOLBSN	1057	Holborn Station	261	0.16
	BP5294	High Holborn	356	0.22
TCTRNO	35030	Tottenham Court Road Station	319	0.20
	165	Oxford Street / Soho Street	298	0.19
	831	Wardour Street	317	0.20
	33924	Great Titchfield Street	263	0.16
OXFCHS	BP4269	Holles Street	641	0.40
OXFCHSWS	OXFCHSWS	OXFORD CIRCUS, HOLLES STREET, WEST SIDE	0	0.00
TOTAL ROUTE MILEAGE - OUT DIRECTION			27064	16.82
			metres	miles

TRANCHE 447

Buses towards Hainault not using the Redbridge Station Forecourt anymore

BACK DIRECTION				
Timing Point Code	Stop Number	Stop Name	Metres	Miles
OXFCHSW	OXFCHSW	OXFORD CIRCUS, HOLLES STREET, WEST SIDE		
OXFCHSW	34846	Holles Street	0	0.00
	15783	Great Titchfield Street	856	0.53
	20465	Wardour Street	276	0.17
TCTRNO	14456	New Oxford Street	495	0.31
	29844	Museum Street	306	0.19
HOLBSN	33107	Procter Street	491	0.31
	8419	Brownlow Street	341	0.21
	1472	Chancery Lane Station	209	0.13
	20628	Holborn Circus / Fetter Lane	182	0.11
	2018	Holborn Circus	250	0.16
	1157	City Thameslink Station	182	0.11
SPLSSN	8586	King Edward Street	312	0.19
	BP5575	St Paul's Station	454	0.28
BANKSNY	10352	Bank Station / Poultry	286	0.18
	8606	Bank Station / Threadneedle Street	281	0.17
	8607	Old Broad Street	190	0.12
	BP1575	Wormwood Street	305	0.19
LVSTBG	768	Liverpool Street Station	212	0.13
	2114	Primrose Street	304	0.19
SHORGE	19259	Shoreditch High Street Station	230	0.14
	18058	Bethnal Grn Rd / Sh Ditch High St Stn	257	0.16
	1451	Brick Lane	315	0.20
	4614	Barnet Grove	395	0.25
	18060	Pollard Row	272	0.17
	1687	Wilmot Street	249	0.15
BETHSN	4615	Bethnal Green Station	227	0.14
	29733	Burnham Street	313	0.19
	2293	Bonner Street	435	0.27
	18062	Smart Street	172	0.11
	R0311	Grove Road	361	0.22
	35218	Medway Road	286	0.18
	35219	Ford Road	158	0.10
	35217	Old Ford Road	331	0.21
	1099	Parnell Road	411	0.26
OFRDPR	9248	Roman Road Market	196	0.12
BOW ES	2066	Marshgate Lane	1582	0.98
	2068	Warton Road	493	0.31
	2070	Stratford High St / Carpenters Rd	356	0.22
STFDBS	BP974	Stratford Bus Station	499	0.31
	35810	Theatre Royal Stratford	390	0.24
	8017	The Grove	161	0.10
	8015	Maryland Station / Manbey Grove	259	0.16
	R0351	Maryland Station	248	0.15
	8010	Chobham Road	327	0.20
LSTNTH	20778	Cann Hall Road	229	0.14
	14544	Ranelagh Road	375	0.23
	14439	Harrow Green	265	0.16
	FL009	West Street	195	0.12
	14550	Leytonstone Fire Station	190	0.12
	R0022	Leytonstone High Road Station	230	0.14
	14556	Vernon Road	282	0.18
	14560	Harvey Road	256	0.16
	BP2754	Kirkdale Road	207	0.13
LSTNGM	14565	Green Man Roundabout	234	0.15
	14706	Cambridge Road	682	0.42
	14708	Blake Hall Road	191	0.12
WANSSN	9326	Wanstead Station	393	0.24
	R0326	Nutter Lane	588	0.37
	15473	Evanston Gardens	1109	0.69
	4323	The Drive	340	0.21
	15476	Beehive Lane	334	0.21
GTSLSN	4321	Gants Hill Station	456	0.28
	13557	Gants Hill Station	228	0.14
	15392	Shere Road	196	0.12
	13151	Gantshill Crescent	357	0.22
	15394	Hamilton Avenue	349	0.22
	15396	Redbridge Register Office	328	0.20
	25368	Fremantle Road	524	0.33
BKSDFX	34310	Fulwell Cross	405	0.25
	416	Tomswood Hill	372	0.23
	15398	Neville Road	189	0.12
	15400	New North Road	432	0.27
	20740	Trelawney Road	467	0.29
	20742	Hainault Station	375	0.23
	20744	Beech Grove	359	0.22
	20746	Hainault Fire Station	247	0.15
	35438	Kielder Close	293	0.18
HAINTL	BP2156	Hainault / the Lowe	286	0.18
HAINTL S	HAINTL S	HAINAULT, THE LOWE	0	0.00
TOTAL ROUTE MILEAGE - BACK DIRECTION			26818 metres	16.66 miles