

SECTION 2: PART A

SERVICE SPECIFICATION FOR ROUTE Nos. 12 & N12

CONTENTS

	Page
1. Tenders Required	2
2. Proposed Changes	2
3. Terminals	2
4. Days of Operation	3
5. Vehicle Type	3
6. Frequencies	4
7. Minimum Performance Standards	11
8. Running Times	12
9. Layovers	12
10. Timing Constraints	12
11. Control Strategy	13
12. Operational Considerations	13
13. Stopping Arrangements	13
14. Timing Points and Mileages	14
15. Vehicle Livery	14
16. Stands and Blinds	15
 <u>Appendices</u>	
A. Route Record	16

This document should be read in conjunction with the Corporation's Guide for Tenderers (Part A: Explanatory Notes - Service Requirements). Where appropriate, reference is made to the relevant section.

1. TENDERS REQUIRED

This document describes the service for which the Corporation requires Tenders and Tenderers **must** submit a fully compliant bid. In addition, Tenderers **may** wish to draw upon their local knowledge to submit alternative bids which offer improved value for money in meeting passenger needs. These might incorporate, for example, different timings, frequencies, route structures and / or vehicles. The Corporation will welcome such bids and give them careful consideration.

For more information, please refer to Section 2.1 of Part A of the Guide for Tenderers.

2. PROPOSED CHANGES

At this time, no changes are proposed to the existing service for introduction prior to the commencement of the new Route Agreement for Route Nos. 12 & N12.

Tenderers should note that the following alterations (subject to consultation) are proposed as part of this Service Specification for introduction with the new Route Agreement:

- Double deck, dual door, 87 capacity vehicles are specified on Route Nos. 12 & N12, subject to a satisfactory route test.
- Mondays to Fridays AM and PM peak frequencies are increased from every 5 minutes to every 4 minutes.
- The two additional peak flow journeys during the Mondays to Fridays AM peak are withdrawn.
- Ex Oxford Circus, one peak flow journey is specified during the Mondays to Fridays PM peak to pass Camberwell Green, Camberwell Church Street between 1540 and 1640.
- Sunday shopping period frequencies are increased from every 6 minutes to every 5 minutes.
- Evening frequencies are increased from every 7-8 minutes (8 buses per hour) to every 6 minutes.
- Late Evening frequencies are increased from every 10 minutes to every 7-8 minutes (8 buses per hour).
- Weekend nights are increased from every 30 minutes to every 15 minutes.
- Route Nos. 12 and N12 will stand at Dulwich Library, however, details of the stand will be discussed with the successful Tenderer at a later date.
- **Tenderers must identify the cost of the Nightly element of this service separately.**
- The designation Route No. 12 & N12 is used for contractual purposes only. This service will be marketed as Route No. 12 & N12. This includes all publicity, including destination blind displays.

3. TERMINALS

Route Nos. 12 & N12 will operate between Oxford Circus and Dulwich Library.

Full details of the route to be followed, the permitted terminal workings and the available stands are shown at Appendix A. Tenderers should particularly note the information relating to the shared usage of stands, the taking of meal reliefs and the use of ferry vehicles.

4. DAYS OF OPERATION

One timetable must be offered for Route Nos. 12 & N12 which will operate as follows:

DAY OF OPERATION	
Mondays to Fridays	Section 6.1
Saturdays & Good Friday	Section 6.2
Sundays	Section 6.3
Christmas Day	No service
Boxing Day	Section 6.4
Other Public Holidays	Sunday service
Sunday nights/Monday mornings to Thursday nights/Friday mornings	Section 6.5
Friday nights/Saturday mornings to Saturday nights/Sunday mornings	Section 6.6
New Year's Eve night/New Year's Day morning*	Nightly service
Christmas Eve night/Christmas Day morning	No service
Christmas Day night/Boxing Day morning	No service

* The New Year's Eve service level should be regarded as a minimum and any frequency increases and/or diversions will be discussed with the successful Tenderer on an annual basis.

5. VEHICLE TYPE

Please refer to Section 2.5 of Part A of the Guide for Tenderers.

Route Nos. 12 & N12 are currently approved for articulated vehicles which are a maximum of 18 metres long and 2.55 metres wide. A formal route test will be required for double deck vehicles. This will be arranged with the successful Tenderer.

The service requirement set out in Section 6 assumes that dual door, double deck buses with a minimum capacity of 87 of which approximately 60 should be seated, will be used on Route Nos. 12 & N12. Luggage space should also be provided.

Tenderers must submit proposals based on new vehicles. These must be of a low floor design and be accessible to wheelchairs by means of a powered ramp.

Bids for both conventional diesel powered vehicles and diesel-electric hybrid vehicles should be submitted and separate prices for both types are required.

Bids based on a mix of hybrid and conventional vehicles would be welcomed, subject to a minimum of 10 hybrid powered vehicles being offered for this route (full hybrid operation should be offered for routes with a vehicle requirement of less than 10).

Tenderers should refer to the vehicle design (including accessibility) features contained in Schedule II to Annex B of the Framework Agreement and Section 2 Part B of the Master ITT (Version 2 issued June 2005).

Tenderers may also submit bids based on using existing vehicles. Tenderers are asked to specify what refurbishment would be carried out on existing buses and the expected timescale of those works. See Master ITT (Version 2 issued June 2005).

6. FREQUENCIES

The level of service (e.g. every 15 minutes) required by the Corporation is described in terms of the interval between departures. Whilst a completely regular service at the specified frequency should be possible at most times, occasionally a bus may be timetabled to depart up to five minutes earlier or later than the regular time.

Tenderers should note that when the specified frequency changes (e.g. between the peak and midday periods), the scheduled interval between buses should never be greater than that provided by the lower of the two frequencies **AT ANY POINT ON THE ROUTE**.

Tenderers should note that unless otherwise stated **all** journeys should operate between the terminal points defined in each direction.

6.1 Mondays to Fridays

1. Oxford Circus to Dulwich Library

0450 - 0605	Every 12 minutes
0606 - 0635	Every 10 minutes
0636 - 0655	Every 7-8 minutes (8 buses per hour)
0656 - 0710	Every 5 minutes
0711 - 0840	Every 4 minutes
0841 - 1455	Every 5 minutes
1456 - 1555	Every 3-4 minutes (16 buses per hour)
1556 - 2005	Every 4 minutes
2006 - 2025	Every 5 minutes
2026 - 0005	Every 6 minutes
0006 - 0030	Every 7-8 minutes (8 buses per hour)

First departure from Oxford Circus no later than 0455.

Last departure from Oxford Circus no earlier than 0025.

Tenderers should ensure that buses are scheduled to be no more than 4 minutes apart at Camberwell Green, Camberwell Church Street between 0800 and 0900 and between 1630 and 1730.

2. Dulwich Library to Oxford Circus

0500 - 0535	Every 10 minutes
0536 - 0605	Every 7-8 minutes (8 buses per hour)
0606 - 0735	Every 5 minutes
0736 - 0835	Every 4 minutes
0836 - 1500	Every 5 minutes
1501 - 1900	Every 4 minutes
1901 - 1930	Every 5 minutes
1931 - 2320	Every 6 minutes
2321 - 0015	Every 7-8 minutes (8 buses per hour)

First departure from Dulwich Library no later than 0505.

Last departure from Dulwich Library no earlier than 0010.

Tenderers should ensure that buses are scheduled to be no more than 4 minutes apart at Elephant and Castle, Tabernacle between 0815 and 0910 and between 1540 and 1640.

6.2 Saturdays & Good Friday

1. Oxford Circus to Dulwich Library

0450 - 0705	Every 12 minutes
0706 - 0735	Every 7-8 minutes (8 buses per hour)
0736 - 0905	Every 6 minutes
0906 - 1900	Every 5 minutes
1901 - 0005	Every 6 minutes
0006 - 0030	Every 7-8 minutes (8 buses per hour)

First departure from Oxford Circus no later than 0455.

Last departure from Oxford Circus no earlier than 0025.

Tenderers should ensure that buses are scheduled to be no more than 5 minutes apart at Camberwell Green, Camberwell Church Street between 1020 and 1130.

2. Dulwich Library to Oxford Circus

0500 - 0630	Every 12 minutes
0631 - 0800	Every 7-8 minutes (8 buses per hour)
0801 - 0830	Every 6 minutes
0831 - 1830	Every 5 minutes
1831 - 2320	Every 6 minutes
2321 - 0015	Every 7-8 minutes (8 buses per hour)

First departure from Dulwich Library no later than 0505.

Last departure from Dulwich Library no earlier than 0010.

Tenderers should ensure that buses are scheduled to be no more than 5 minutes apart at Elephant and Castle, Tabernacle between 0940 and 1100.

6.3 Sundays

1. Oxford Circus to Dulwich Library

0450 - 0735	Every 15 minutes
0736 - 0800	Every 12 minutes
0801 - 0830	Every 10 minutes
0831 - 0930	Every 7-8 minutes(8 buses per hour)
0931 - 1030	Every 6 minutes
1031 - 1900	Every 5 minutes
1901 - 0005	Every 6 minutes
0006 - 0030	Every 7-8 minutes (8 buses per hour)

First departure from Oxford Circus no later than 0455.

Last departure from Oxford Circus no earlier than 0025.

Tenderers should ensure that buses are scheduled to be no more than 6 minutes apart at Camberwell Green, Camberwell Church Street between 1100 and 1200.

2. Dulwich Library to Oxford Circus

0500 - 0700	Every 15 minutes
0701 - 0730	Every 12 minutes
0731 - 0800	Every 10 minutes
0801 - 0900	Every 7-8 minutes (8 buses per hour)
0901 - 1000	Every 6 minutes
1001 - 1800	Every 5 minutes
1801 - 2320	Every 6 minutes
2321 - 0015	Every 7-8 minutes (8 buses per hour)

First departure from Dulwich Library no later than 0505.

Last departure from Dulwich Library no earlier than 0010.

Tenderers should ensure that buses are scheduled to be no more than 6 minutes apart at Elephant & Castle, Tabernacle between 1040 and 1140.

6.4 Boxing Day

1. Oxford Circus to Dulwich Library

0755 - 0830	Every 10 minutes
0831 - 0930	Every 7-8 minutes(8 buses per hour)
0931 - 1030	Every 6 minutes
1031 - 1900	Every 5 minutes
1901 - 0005	Every 6 minutes
0006 - 0030	Every 7-8 minutes (8 buses per hour)

First departure from Oxford Circus no later than 0800.

Last departure from Oxford Circus no earlier than 0025.

Tenderers should ensure that buses are scheduled to be no more than 6 minutes apart at Camberwell Green, Camberwell Church Street between 1100 and 1200.

2. Dulwich Library to Oxford Circus

0755 - 0900	Every 7-8 minutes (8 buses per hour)
0901 - 1000	Every 6 minutes
1001 - 1800	Every 5 minutes
1801 - 2320	Every 6 minutes
2321 - 0015	Every 7-8 minutes (8 buses per hour)

First departure from Dulwich Library no later than 0800.

Last departure from Dulwich Library no earlier than 0010.

Tenderers should ensure that buses are scheduled to be no more than 6 minutes apart at Elephant & Castle, Tabernacle between 1040 and 1140.

6.5 Sunday nights/Monday mornings to Thursday nights/Friday mornings

1. Oxford Circus to Dulwich Library

0035 - 0445 Every 30 minutes

First departure from Oxford Circus no later than 0040.
Last departure from Oxford Circus no earlier than 0440.

2. Dulwich Library to Oxford Circus

0015 - 0455 Every 30 minutes

First departure from Dulwich Library no later than 0020.
Last departure from Dulwich Library no earlier than 0450.

Tenderers must identify the cost of the Nightly element of this service separately.

6.6 Friday nights/Saturday mornings to Saturday nights/Sunday mornings

1. Oxford Circus to Dulwich Library

0035 - 0500 Every 15 minutes

First departure from Oxford Circus no later than 0040.
Last departure from Oxford Circus no earlier than 0440.

2. Dulwich Library to Oxford Circus

0015 - 0500 Every 15 minutes

First departure from Dulwich Library no later than 0020.
Last departure from Dulwich Library no earlier than 0450.

Tenderers must identify the cost of the Nightly element of this service separately.

7. MINIMUM PERFORMANCE STANDARDS

Please refer to Section 2.7 of Part A of the Guide for Tenderers.

Tenderers should note that the objective of the Operator of Route No. 12 shall be to operate all scheduled mileage and adhere **fully** to the published timetable. The Operator must use its best endeavours to achieve this.

The **minimum** standards of acceptable performance for Route No. 12 shall be:

Average Excess Wait Time:	No more than 1.30 minutes
Minimum Operated Mileage:	No less than 98.00%

The **minimum** standards of acceptable performance for Route No. N12 shall be:

Departing on Time	No less than 85.00%
Minimum Operated Mileage	No less than 99.00%

or as notified by the Corporation from time to time. The Operator will be required to achieve or better the standards.

It is unlikely that the minimum number of QSI surveys for performance measurement will be conducted on Route No. N12 at present. However, this may change at a later date.

QSI Thresholds

The QSI threshold is the standard of performance to be achieved by the operator in order to qualify for an automatic contract extension (in accordance with Schedule IX of the Framework Agreement).

Average Excess Wait Time Threshold = 1.15 minutes

It is unlikely that the minimum number of QSI surveys for Threshold measurement will be conducted on Route No. N12 at present. However, this may change at a later date when a Threshold figure may be published.

Summary of proposed QSI coverage: Route Nos. 12 & N12

Note: While London Buses undertakes to carry out QSI surveys at the times and locations specified below, it may prove impossible to rearrange a survey cancelled or nullified at short notice.

Survey locations

Towards Oxford Circus

Dulwich
Peckham
Camberwell Green
Elephant & Castle

Towards Dulwich Library

Oxford Circus
Trafalgar Square (Whitehall)
Elephant & Castle
Camberwell Green
Peckham

Total scheduled manual QSI surveys per quarter = 144.

8. RUNNING TIMES

The current timetables for Route Nos. 12 & N12 can be viewed by prospective Tenderers on Caesar. Attention is drawn to the variations in running times at different times of the day. Please refer to Section 2.8 of Part A of the Guide for Tenderers for further information.

Tenderers should carefully check the existing running times to ensure that they are appropriate in present traffic conditions. Tenderers should particularly check the existing running times for Saturday and Sunday nights on Route No. N12.

When reviewing existing, and devising new, running times Tenderers should refer to:

- the minimum performance standards for Route Nos. 12 & N12 in Section 7 above;
- the historical performance data provided in Section 1 Part B of the introduction to this ITT.

Tenderers should allow for realistic increases in daily running times for operation with low-floor, dual door, double-deck buses. As a guide, the Corporation estimates that running times should increase by approximately 3% for dual door, double deck buses when compared to articulated operation.

Tenderers may consider if school summer holiday schedules, incorporating running time reductions, are desirable for this route. In this event, schedules and costs must be submitted separately.

9. LAYOVERS

Under normal circumstances, layover time on stands and at bus stations should be restricted to that required to provide a reliable service. Longer layovers for any other purpose may only be taken with the permission of the Corporation.

10. TIMING CONSTRAINTS

Route No. 12 should interwork with Route No. N12 to form a seamless 24 hour service.

Tenderers submitting bids should bear this requirement in mind when compiling schedules. This requirement will be negotiated with the successful Tenderer for this route to ensure that optimal interworking/separation is delivered within its schedules.

11. CONTROL STRATEGY

Route Nos. 12 & N12 can suffer from the effects of traffic congestion, making some form of route control essential in order to achieve or better the minimum performance standards for this route.

Tenderers should submit proposals on the control strategy they intend to adopt and the type of control they would intend to use by completing the form provided in Section 3: Part 7 of this ITT. The cost of this control should be included within the main Tender price.

Tenderers should also indicate how they intend to facilitate driver changeovers and meal reliefs for this route.

Further information is provided in Section 2.11 of Part A of the Guide for Tenderers.

12. OPERATIONAL CONSIDERATIONS

Tenderers should note the following operating considerations affecting Route Nos. 12 & N12:

- Route Nos. 12 & N12 can suffer from unpredictable traffic delays throughout the route at all times, particularly during the Mondays to Fridays AM and PM peak periods.
- TfL is committed to to reduce bus flow by 10% on Oxford Street in 2010.

Tenderers should also note the following factors/events which may have an impact on Route Nos. 12 & N12 in the foreseeable future:

- A new 24 hour toilet should be available at Dulwich, Friern Lane/Lordship Lane by the start of the new contract.
- Standing arrangements at Dulwich Library will be revised to accommodate double deck buses.

13. STOPPING ARRANGEMENTS

Buses operating on Route Nos. 12 & N12 must serve all stops on the line of route designated for the route.

14. TIMING POINTS & MILEAGES

Timing Points

The required timing points (and codes) are shown in Caesar.

Mileages for Route Nos. 12 & N12

Dulwich Library to Oxford Circus	7.1 miles
Oxford Circus to Dulwich Library	7.7 miles

Tenderers should note that:

- these measurements are believed to be accurate to within 0.5 miles, but no warranty or representation as to accuracy is given;
- out of service stand workings have not been measured and are not included within the above measurements;
- if alternative or additional measurements are used by the Tenderer, these must be stated in the tender submission;
- point to point measurements pertaining to recognised curtailment points or alternative terminals will be agreed with the successful Tenderer once the contract has been awarded.

15. VEHICLE LIVERY

All vehicles to be used on Route Nos. 12 & N12 from the commencement of the new Route Agreement must be in a livery that is exclusively Corporation red. The paint should be matched accurately to the colour as defined by the following manufacturer's specifications:

ICI London Bus Red P498 FPF 3

Other manufacturers should also be able to produce this specification from the ICI colour chart.

This requirement does not include the lower panels which may be in a different colour but which shall not exceed 50cm in height, or the rooftop which should be painted white so as to reduce temperatures inside the vehicle during the summer months.

The positioning and size of Operators' logos are to be agreed between the Operator and the Corporation and, where possible, these should be above the front doors on the nearside of the vehicles and above the drivers' offside cab windows.

All livery proposals must be submitted to the Contracts Tendering Manager for approval.

16. STANDS AND BLINDS

Tenderers should note that under normal circumstances, the specific restrictions relating to each stand will apply to the whole stand at all times. Any variation to such standing arrangements must be agreed by the Corporation. In addition, Tenderers should note the following general requirements:

- 1) Drivers MUST switch off engines during layover periods at bus stations or on stands.
- 2) No meal reliefs may be taken on any stand (on or off line of route) without the permission of the Corporation.
- 3) No crew ferry vehicles may enter any stand (on or off line of route) without the permission of the Corporation.
- 4) Destination blind displays to be used are shown under each stand description. Tenderers may suggest, within their bids, alternative blind displays.
- 5) The intermediate (also known as via) blind display to be used on the nearside of the vehicle is shown in the box below:

12 via Camberwell

For further information, please refer to Annex C of the Framework Agreement: General Conditions relating to the use of London Buses' Bus Stations and Stands.

LONDON BUSES - ROUTE DESCRIPTION

ROUTE 12: Oxford Circus - Dulwich, Library (24 hour service)

Date of Structural Change: 5 November 2011.

Date of Service Change: 5 November 2011.

Reason for Issue: New Tender.

STREETS TRAVERSED

Towards Dulwich, Library: Regent Street, Piccadilly Circus, Haymarket, Cockspur Street, Trafalgar Square (South Side), Charing Cross, Whitehall, Parliament Street, Bridge Street, Westminster Bridge, Westminster Bridge Road, St George's Circus, London Road, Elephant And Castle, Walworth Road, Camberwell Road, Camberwell Green (West Side), Camberwell Green (South Side), Camberwell Church Street, Peckham Road, Peckham High Street, Clayton Road, Hanover Park, Rye Lane, Peckham Rye, Barry Road, Lordship Lane.

Towards Oxford Circus: Barry Road, Peckham Rye, Rye Lane, Peckham High Street, Peckham Road, Camberwell Church Street, Camberwell Green (South Side), Camberwell Green (West Side), Camberwell Road, Walworth Road, Elephant And Castle, St George's Road, Westminster Bridge Road, Westminster Bridge, Bridge Street, Bus-Only Right Turn, Parliament Street, Whitehall, Charing Cross, Trafalgar Square (South Side), Cockspur Street, Pall Mall, Waterloo Place, Regent Street, Piccadilly Circus, Regent Street.

STANDING AND TURNING POINTS

OXFORD CIRCUS, CAVENDISH PLACE

Public offside stand for four buses on south side of Cavendish Place, commencing 1 metre east and extending 42 metres west.

Buses proceed from Regent Street via Margaret Street, Cavendish Square and Cavendish Place to stand, departing via Cavendish Place to Regent Street. Set down in Regent Street, at stop RE and pick up in Regent Street, at Stop RF.

AVAILABILITY: At any time.

OPERATING RESTRICTIONS: No more than 2 buses on Route 12 should be scheduled to stand at any one time.

MEAL RELIEFS: No meal relief vehicles to stand at any time.

FERRY VEHICLES: No ferry vehicles to park on stand at any time.

DISPLAY: Oxford Circus.

TRAFALGAR SQUARE, GREAT SCOTLAND YARD (from DULWICH, LIBRARY)

Public stand for two buses on north side of Great Scotland Yard in two portions:
1- for one bus, from a point 46 metres east of the eastern kerb line of Whitehall, extending 13 metres west.

2- for one bus, from a point 68.5 metres east of eastern kerb line of Whitehall, extending 13 metres west.

Buses proceed from Whitehall via Charing Cross, Trafalgar Square (South Side), Northumberland Avenue and Great Scotland Yard to stand, departing via Great Scotland Yard to Whitehall. Set down in Whitehall and pick up in Whitehall, at Stop P.

AVAILABILITY: At any time.
OPERATING RESTRICTIONS: Unscheduled curtailments only
MEAL RELIEFS: No meal relief vehicles to stand at any time.
FERRY VEHICLES: No ferry vehicles to park on stand at any time.
DISPLAY: Whitehall, Horseguards.

WESTMINSTER STATION (from DULWICH, LIBRARY)

Buses proceed from Westminster Bridge via Bridge Street, Parliament Square, Bridge Street and Westminster Bridge departing to Westminster Bridge Road. Set down in Westminster Bridge, at Stop D and pick up in Westminster Bridge, at Stop E.

AVAILABILITY: At any time.
OPERATING RESTRICTIONS: **Turning Point Only - Buses must not stand**
DISPLAY: Parliament Square.

WATERLOO, COUNTY HALL (from DULWICH, LIBRARY)

Buses proceed from Westminster Bridge Road via York Road, York Road - Bus Only and Addington Street departing to Westminster Bridge Road. Set down in Westminster Bridge Road, at Stop A and pick up in Westminster Bridge Road, at Stop K.

AVAILABILITY: At any time.
OPERATING RESTRICTIONS: **Turning Point Only - Buses must not stand**
DISPLAY: Westminster Bridge Road.
OTHER INFORMATION: Emergency curtailments only.

ELEPHANT & CASTLE, SOUTHWARK BRIDGE ROAD

Public stand in two portions:

1 - For five buses on the west side of Southwark Bridge Road, commencing 10 metres north of the centre of Keyworth Street and extending 54 metres north.

2 - Overflow stand for two buses on the south side (offside) of Gaunt Street extending 20 metres. Stand flag BP3514.

From Dulwich, Library.

Buses proceed from Elephant And Castle via Newington Causeway and Southwark Bridge Road to stand, departing via Southwark Bridge Road, Gaunt Street and Newington Causeway to Elephant And Castle. Set down in Elephant And Castle, at Stop V and pick up in Elephant And Castle, at Stop R.

From Oxford Circus.

Buses proceed from London Road via Elephant And Castle, Newington Causeway and Southwark Bridge Road to stand, departing via Southwark Bridge Road, Gaunt Street, Newington Causeway and Elephant And Castle to St George's Road. Set down in London Road, at Stop D and pick up in St George's Road, at Stop Z.

AVAILABILITY:	At any time.
OPERATING RESTRICTIONS:	Unscheduled curtailments only.
MEAL RELIEFS:	No meal relief vehicles to stand at any time.
FERRY VEHICLES:	No ferry vehicles to park on stand at any time.
DISPLAY:	Elephant and Castle.

CAMBERWELL ROAD, MEDLAR STREET

From Dulwich, Library.

Buses proceed from Camberwell Road via Wyndham Road, Camberwell New Road and Camberwell Green (South Side) departing to Camberwell Church Street. Set down in Camberwell Road and pick up in Camberwell Church Street, at Stop K.

From Oxford Circus.

Buses proceed from Camberwell Road via Medlar Street, Camberwell New Road and Camberwell Green (West Side) departing to Camberwell Road. Set down in Camberwell Road, at Stop A and pick up in Camberwell Road, at Stop C.

AVAILABILITY:	At any time.
OPERATING RESTRICTIONS:	Turning Point Only - Buses must not stand
DISPLAY:	Camberwell Road, Medlar Street.
OTHER INFORMATION:	For late meal relief purposes only. Buses must not stand.

PECKHAM BUS STATION (from Oxford Circus)

Buses proceed from Peckham High Street via Peckham Bus Station and Peckham High Street departing to Peckham Road. Set down in Peckham High Street, at Stop B and pick up in Peckham Road, at Stop S.

AVAILABILITY: At any time.
OPERATING RESTRICTIONS: **Turning Point Only - Buses must not stand**
DISPLAY: Peckham.

PECKHAM RYE, WEST SIDE (from Oxford Circus)

Public offside stand on west side of Peckham Rye East, commencing 29 metres south of a point opposite Phillip Walk and extending 20 metres North.

Buses proceed from Rye Lane via Peckham Rye to stand, departing to Peckham Rye. Set down in Rye Lane, at Stop EA and pick up in Peckham Rye, at Stop WM.

AVAILABILITY: At any time.
OPERATING RESTRICTIONS: Unscheduled curtailments only
MEAL RELIEFS: No meal relief vehicles to stand at any time.
FERRY VEHICLES: No ferry vehicles to park on stand at any time.
DISPLAY: Peckham Rye.

DULWICH, LORDSHIP LANE/FRIERN ROAD

Public stand for four buses in two adjacent sections on Lordship Lane and Friern Road.

1. For two buses in Lordship Lane - commencing at lamp standard 2315/54 and extending 24 metres north.

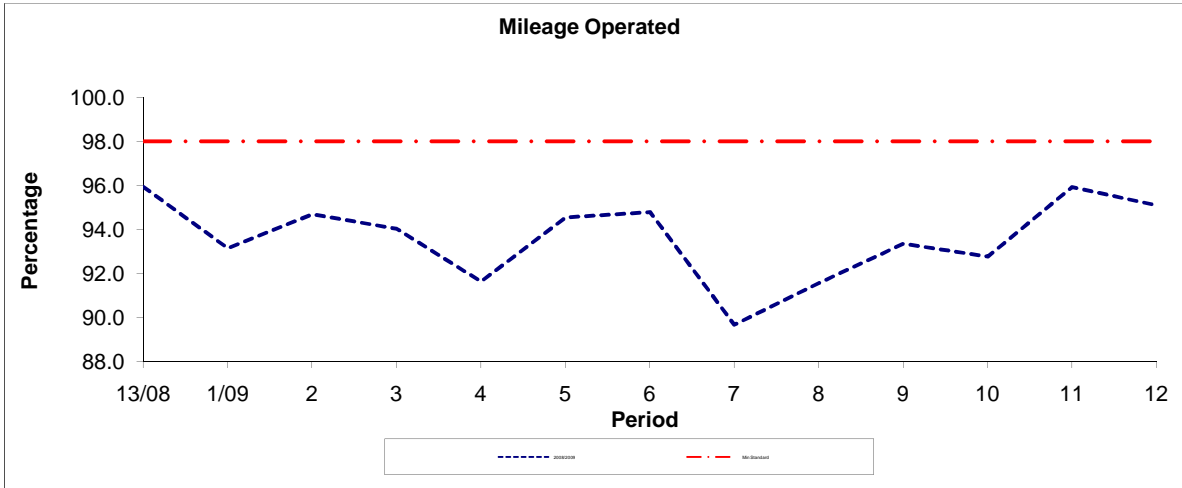
2. For two buses in Friern Road - commencing 14 metres north of lamp standard 2592/02 and extending 27 metres south.

Buses proceed from Lordship Lane direct to stand, departing via Lordship Lane, Friern Road and Etherow Street to Barry Road. Set down in Lordship Lane, at Stop DE at Stop DE and pick up in Barry Road, at Stop DB.

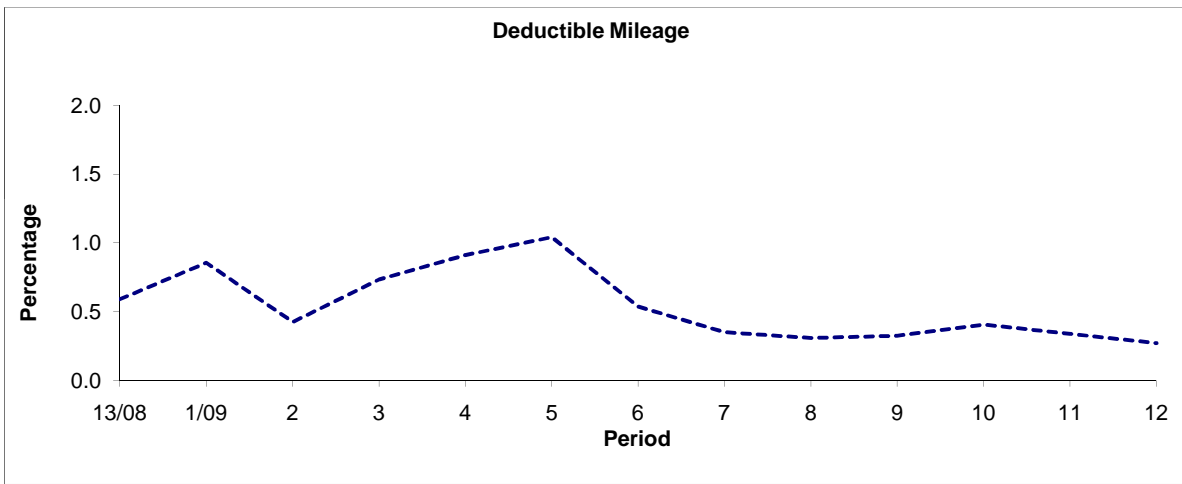
AVAILABILITY: At any time.
OPERATING RESTRICTIONS: No more than 2 buses on Route 12 should be scheduled to stand at any one time.
MEAL RELIEFS: No meal relief vehicles to stand at any time.
FERRY VEHICLES: No ferry vehicles to park on stand at any time.
DISPLAY: Dulwich Library.

PART B - PERFORMANCE STATISTICS

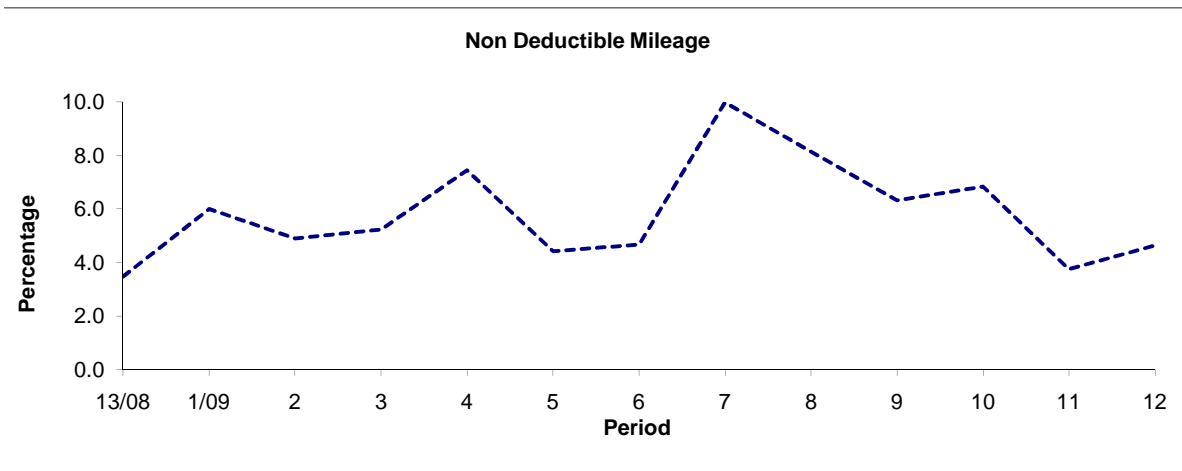
Route 12



Period	13/08	1/09	2	3	4	5	6	7	8	9	10	11	12
2008/2009	95.94	93.15	94.69	94.03	91.64	94.54	94.80	89.67	91.56	93.36	92.76	95.92	95.10
Min Standard	98.00	98.00	98.00	98.00	98.00	98.00	98.00	98.00	98.00	98.00	98.00	98.00	98.00



Period	13/08	1/09	2	3	4	5	6	7	8	9	10	11	12
2008/2009	0.59	0.86	0.42	0.73	0.91	1.04	0.54	0.35	0.31	0.32	0.40	0.34	0.27

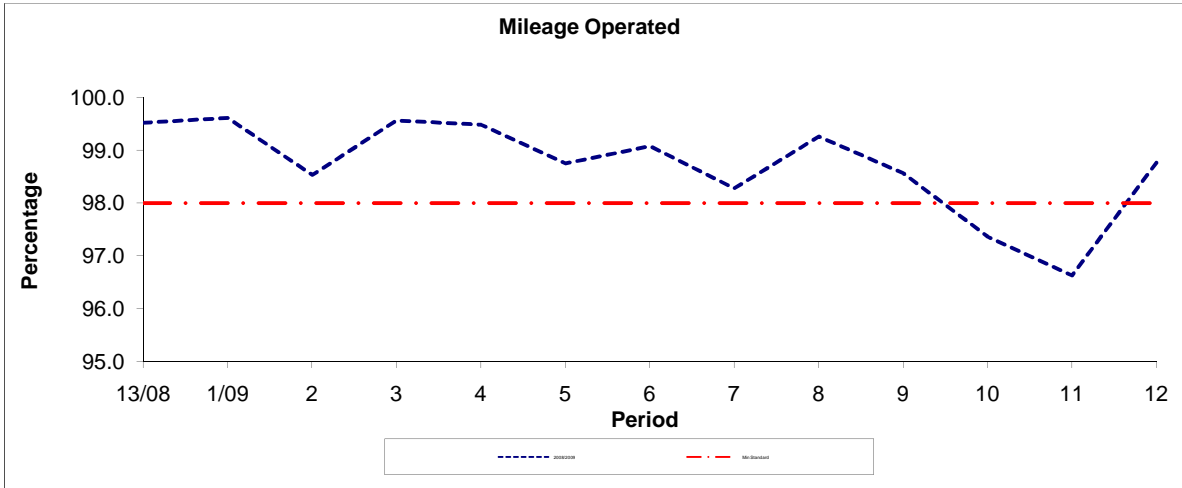


Period	13/08	1/09	2	3	4	5	6	7	8	9	10	11	12
2008/2009	3.47	6.00	4.89	5.24	7.45	4.42	4.67	9.98	8.14	6.32	6.83	3.74	4.63

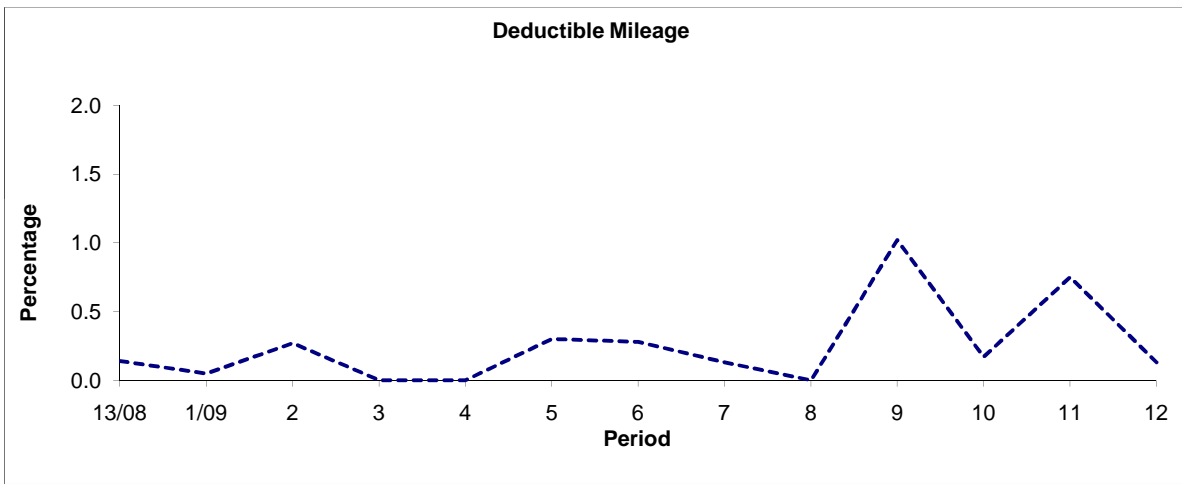
Note : Mileage is based on 4 weeks data

PART B - PERFORMANCE STATISTICS

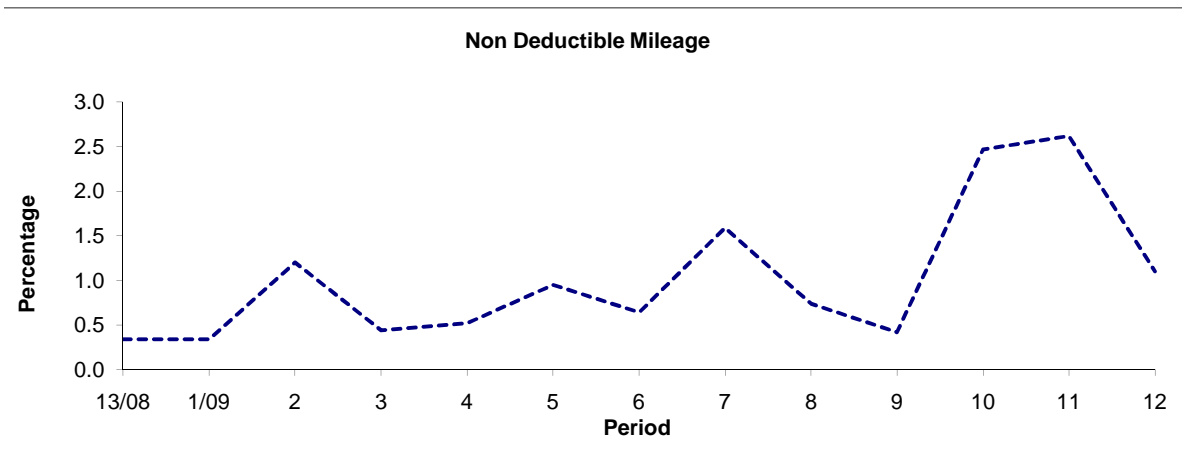
Route N12



Period	13/08	1/09	2	3	4	5	6	7	8	9	10	11	12
2008/2009	99.52	99.61	98.53	99.56	99.48	98.75	99.08	98.28	99.26	98.56	97.36	96.63	98.77
Min Standard	98.00	98.00	98.00	98.00	98.00	98.00	98.00	98.00	98.00	98.00	98.00	98.00	98.00



Period	13/08	1/09	2	3	4	5	6	7	8	9	10	11	12
2008/2009	0.14	0.05	0.27	0.00	0.00	0.30	0.28	0.13	0.00	1.02	0.17	0.75	0.13

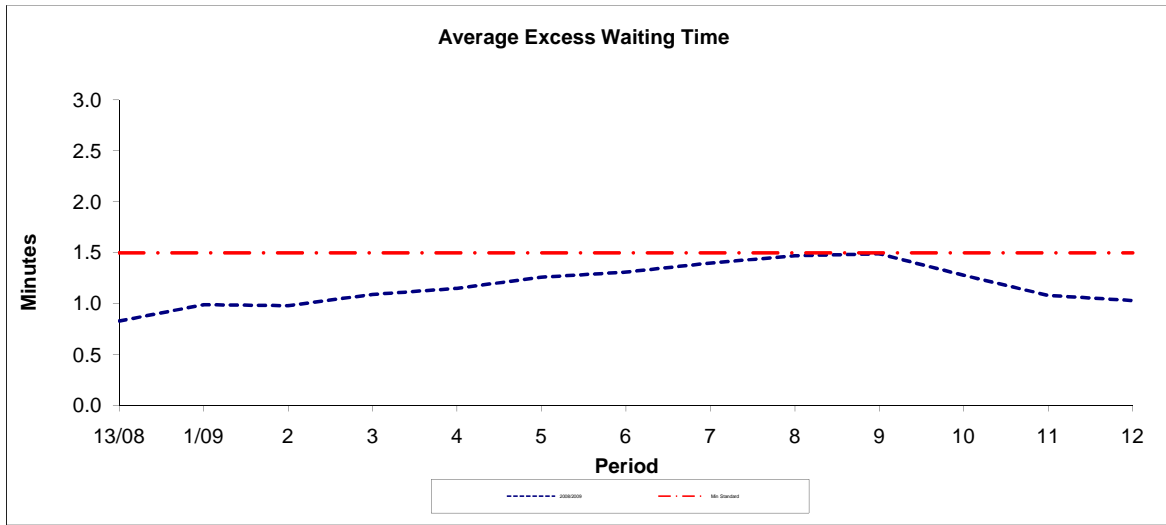


Period	13/08	1/09	2	3	4	5	6	7	8	9	10	11	12
2008/2009	0.34	0.34	1.20	0.44	0.52	0.95	0.64	1.59	0.74	0.42	2.47	2.62	1.10

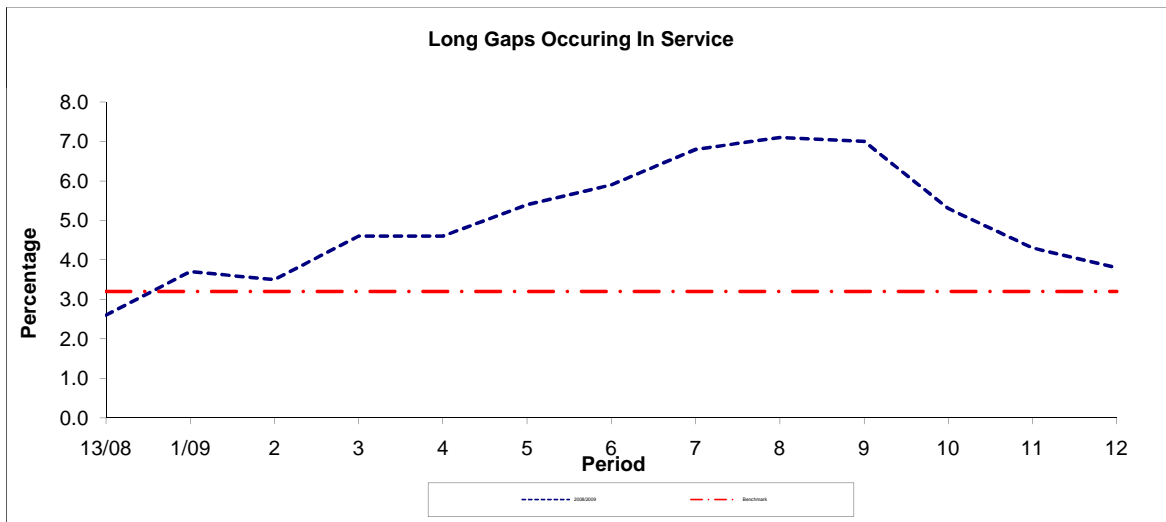
Note : Mileage is based on 4 weeks data

PART B - PERFORMANCE STATISTICS

Route 12



Period	13/08	1/09	2	3	4	5	6	7	8	9	10	11	12
2008/2009	0.83	0.99	0.98	1.09	1.15	1.26	1.31	1.40	1.47	1.49	1.28	1.08	1.03
Min Standard	1.50	1.50	1.50	1.50	1.50	1.50	1.50	1.50	1.50	1.50	1.50	1.50	1.50

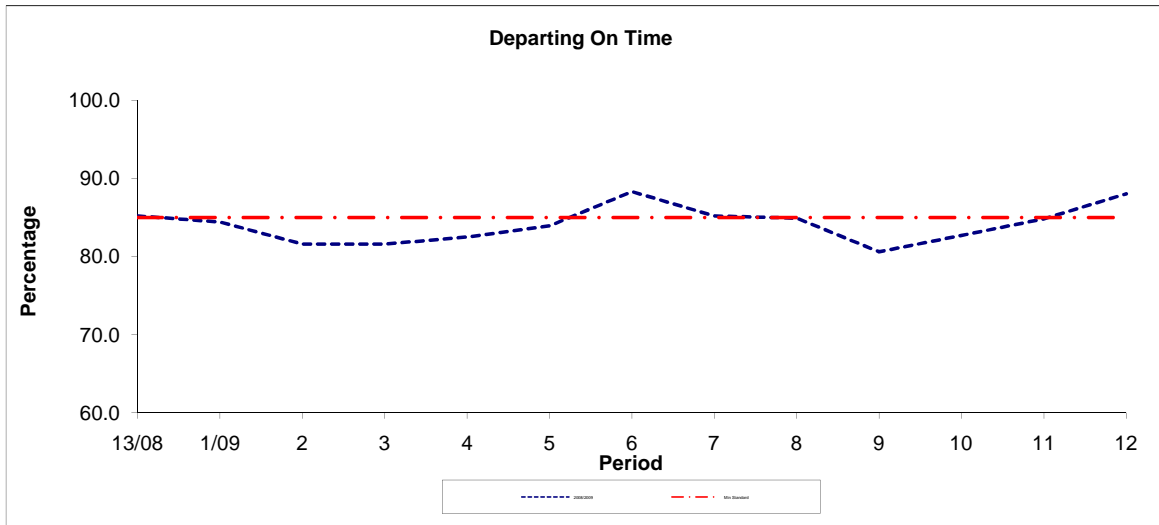


Period	13/08	1/09	2	3	4	5	6	7	8	9	10	11	12
2008/2009	2.60	3.70	3.50	4.60	4.60	5.40	5.90	6.80	7.10	7.00	5.30	4.30	3.80
Benchmark	3.20	3.20	3.20	3.20	3.20	3.20	3.20	3.20	3.20	3.20	3.20	3.20	3.20

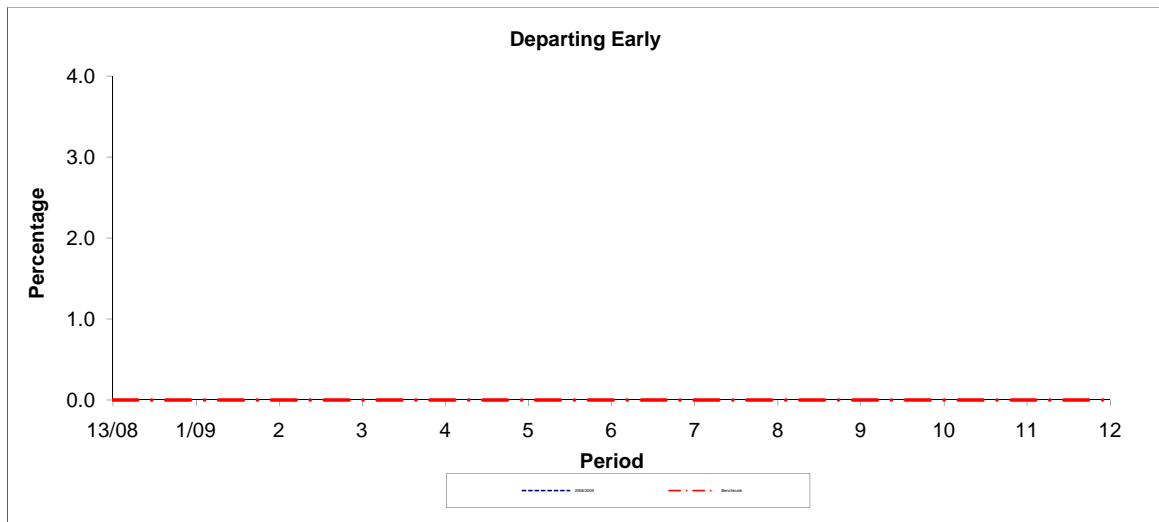
Note : Reliability is based on 12 weeks rolling data

PART B - PERFORMANCE STATISTICS

Route N12



Period	13/08	1/09	2	3	4	5	6	7	8	9	10	11	12
2008/2009	85.20	84.40	81.60	81.60	82.50	83.90	88.30	85.20	84.90	80.60	82.70	84.80	88.00
Min Standard	85.00	85.00	85.00	85.00	85.00	85.00	85.00	85.00	85.00	85.00	85.00	85.00	85.00



Period	13/08	1/09	2	3	4	5	6	7	8	9	10	11	12
2008/2009													
Benchmark	0.00	0.00	0.00	0.00	0.00	0.00	0.00	0.00	0.00	0.00	0.00	0.00	0.00

Note : Reliability is based on 12 weeks rolling data