

7. Service Specification

Route: 13 & N13

QC42301

This Service Specification forms section 7 of the ITT and should be read in conjunction with the ITT document, Version 1 dated 29 September 2011.

You are formally invited to tender for the provision of the bus service detailed below and in accordance with this Service Specification. Tenderers must ensure that a Compliant Tender is submitted and this will only be considered for evaluation if all parts of the Tender documents, as set out in section 11, have been received by the Corporation by the Date of Tender. The Tender must be fully completed in the required format, in accordance with the Instructions to Tenderers. A Compliant Tender must comply fully with the requirements of the Framework Agreement; adhere to the requirements of the Service Specification; and reflect the price of operating the Services with new vehicles.

Terminus Points	Route No. 13: Golders Green Station Forecourt, Stop GG to Aldwych, West Arm Route No. N13: North Finchley Bus Station to Aldwych, West Arm
Contract Basis	Incentivised
Commencement Date	31 st August 2013
Vehicle Type	87 capacity, dual door, double deck buses
Current Maximum Approved Dimensions	10.6 metres long and 2.55 metres wide
New Vehicles Mandatory	Yes
Hybrid Price Required	Yes
Sponsored Route	No
Minimum Performance Standard - Route No. 13	Average Excess Wait Time - No more than 1.10 minutes
Extension Threshold - Route No. 13	Average Excess Wait Time Threshold - 0.95 minutes
Advertising Rights	Operator
Minimum Operated Mileage Standard - Route No. 13	No less than 98.00%
Departing On Time - Route No. N13	Departing on Time - No less than 82.00%
Minimum Operated Mileage Standard - Route No. N13	No less than 99.00%

The Date of Tender for this ITT is: No later than 12 Noon on Monday 5th November 2012

Tenderers should refer to section 3 of Part A for the Service Specification Explanatory Notes and Appendix B of section 5 for the Example Service Specification of the ITT document.

SERVICE SPECIFICATION

- 1) SERVICE SPEC - ROUTE SPECIFICATION INFORMATION
- 2) NOTES
- 3) SCHEDULE REQUIREMENTS & PINCHPOINTS
- 4) OPERATIONAL CONSIDERATIONS
- 5) ROUTE RECORD, CURRENT PERFORMANCE, QSI BY TIME OF DAY, IBUS MILEAGE & QSI POINTS

2) NOTES

Proposed Changes:

At this time, no changes are proposed to the existing service for introduction prior to the commencement of the new Route Agreement for Route Nos. 13 & N13.

Tenderers should note that the following alterations (subject to consultation) are proposed as part of this Service Specification for introduction with the new Route Agreement:

- One Mondays to Fridays AM peak flow journey ex Golders Green Station Forecourt, Stop GG between 0723 and 0823 is withdrawn therefore reducing the frequency from every 6 minutes (10 buses per hour) to every 6-7 minutes (9 buses per hour) during that hour.
- The last departure on Route No. 13 ex Golders Green Station Forecourt, Stop GG is re-timed from 2350 to 2355 to interwork with Route No. N13.
- **Tenderers must identify the cost of the Nightly element of this service separately.**
- The Boxing Day service should match the Sunday service.
- **Tenderers must identify the cost of the Boxing Day element of this service separately.**

3) SCHEDULE REQUIREMENTS & PINCHPOINTS

3.1) MONDAY TO FRIDAY SCHEDULE REQUIREMENTS & PINCHPOINTS

Golders Green Station Forecourt, Stop GG to Aldwych, West Arm		Aldwych, St. Marys Church to Golders Green Station Forecourt, Stop GG			
First departure no later than 0525.		First departure no later than 0615.			
0520 - 0555	Every 15 minutes	0610 - 0700	Every 15 minutes		
0556 - 0635	Every 10 minutes	0701 - 0800	Every 10 minutes		
0636 - 0725	Every 7-8 minutes (8 buses per hour)	0801 - 1730	Every 7-8 minutes (8 buses per hour)		
0726 - 0825	Every 6-7 minutes (9 buses per hour)	1731 - 1830	Every 6-7 minutes (9 buses per hour)		
0826 - 1815	Every 7-8 minutes (8 buses per hour)	1831 - 1930	Every 7-8 minutes (8 buses per hour)		
1816 - 1855	Every 10 minutes	1931 - 2000	Every 10 minutes		
1856 - 2210	Every 12 minutes	2001 - 2300	Every 12 minutes		
2211 - 2400	Every 15 minutes	2301 - 0050	Every 15 minutes		
Last departure no earlier than 2355.		Last departure no earlier than 0045.			
Pinchpoints					
Oxford Circus, Oxford Street (West Side)	0705 - 0805	8 minutes	Finchley Road Station	0740 - 0840	10 minutes
	0806 - 0905	7 minutes		0841 - 0915	8 minutes
	1500 - 1640	8 minutes		1500 - 1640	8 minutes
1820 - 1920				7 minutes	

3) SCHEDULE REQUIREMENTS & PINCHPOINTS - continued

3.2) SATURDAY AND GOOD FRIDAY SCHEDULE REQUIREMENTS & PINCHPOINTS

Golders Green Station Forecourt, Stop GG to Aldwych, West Arm			Aldwych, St. Marys Church to Golders Green Station Forecourt, Stop GG		
First departure no later than 0525.			First departure no later than 0615.		
0520 - 0640	Every 15 minutes		0610 - 0730	Every 15 minutes	
0641 - 0730	Every 12 minutes		0731 - 0830	Every 12 minutes	
0731 - 0750	Every 10 minutes		0831 - 0910	Every 10 minutes	
0751 - 1715	Every 8-9 minutes (7 buses per hour)		0911 - 1850	Every 8-9 minutes (7 buses per hour)	
1716 - 1755	Every 10 minutes		1851 - 1950	Every 10 minutes	
1756 - 2210	Every 12 minutes		1951 - 2300	Every 12 minutes	
2211 - 2400	Every 15 minutes		2301 - 0050	Every 15 minutes	
Last departure no earlier than 2355.			Last departure no earlier than 0045.		
Pinchpoints					
Oxford Circus, Oxford Street (West Side)	0820 - 1100	9 minutes	Finchley Road Station	0900 - 0945	10 minutes
				0946 - 1100	9 minutes

3.3) SUNDAY AND PUBLIC HOLIDAY SCHEDULE REQUIREMENTS & PINCHPOINTS

Golders Green Station Forecourt, Stop GG to Aldwych, West Arm			Aldwych, St. Marys Church to Golders Green Station Forecourt, Stop GG		
First departure no later than 0525.			First departure no later than 0615.		
0520 - 0855	Every 15 minutes		0610 - 1030	Every 15 minutes	
0856 - 2210	Every 12 minutes		1031 - 2300	Every 12 minutes	
2211 - 2400	Every 15 minutes		2301 - 0050	Every 15 minutes	
Last departure no earlier than 2355.			Last departure no earlier than 0045.		
Pinchpoints					
Oxford Circus, Oxford Street (West Side)	1030 - 1130	12 minutes	Finchley Road Station	1030 - 1100	15 minutes
				1101 - 1135	12 minutes

Tenderers must identify the cost of the Boxing Day element of this service separately.

3) SCHEDULE REQUIREMENTS & PINCHPOINTS - continued

3.5) SUNDAY NIGHTS/MONDAY MORNINGS TO THURSDAY NIGHTS/FRIDAY MORNINGS

North Finchley Bus Station to Aldwych, West Arm		Aldwych, St. Marys Church to North Finchley, Tally Ho Corner Kingsway	
First departure no later than 2400.		First departure no later than 0100.	
2355 - 0505	Every 30 minutes	0055 - 0605	Every 30 minutes
Last departure no earlier than 0500.		Last departure no earlier than 0600.	

Tenderers must identify the cost of the Nightly element of this service separately.

3.6) FRIDAY NIGHTS/SATURDAYS MORNINGS TO SATURDAYS NIGHTS/SUNDAYS MORNINGS

North Finchley Bus Station to Aldwych, West Arm		Aldwych, St. Marys Church to North Finchley, Tally Ho Corner Kingsway	
First departure no later than 2400.		First departure no later than 0100.	
2355 - 0505	Every 15 minutes	0055 - 0605	Every 15 minutes
Last departure no earlier than 0500.		Last departure no earlier than 0600.	

Tenderers must identify the cost of the Nightly element of this service separately.

4) OPERATIONAL CONSIDERATIONS

- 4.1) Route No. 13 should interwork with Route No. N13 between Finchley Road, Platts Lane and Aldwych, West Arm to form a seamless 24 hour service.
- 4.2) Route No. 13 should interwork with Route No. 82 between Finchley Road, Platts Lane and Orchard Street, Selfridges during all evenings and Sundays and be separated during all other periods, where possible.
- 4.3) Route No. 13 should be separated from Route No. 113 between Finchley Road, Platts Lane and Orchard Street, Selfridges during all periods, where possible.
- 4.4) Route No. N13 should interwork with Route No. N113 between Finchley Road, Platts Lane and Piccadilly Circus, Regent Street during weeknights and be separated during weekend nights.
- 4.5) Route No. N13 should interwork with Route No. 82 between North Finchley Bus Station and Orchard Street, Selfridges to form a seamless 24 hour service.
- 4.6) Route No. N13 should interwork with Route No. 460 between North Finchley Bus Station and Golders Green Station, Finchley Road, Refectory to form a seamless 24 hour service.
- 4.7) Route No. 13 can suffer unpredictable traffic delays in at Golders Green (principally on Sundays) and along Oxford Street.
- 4.8) Route No. 13 can also suffer from major disruption in the St. Johns Wood area during cricket matches at Lord's.

5) ROUTE RECORD, CURRENT PERFORMANCE, QSI BY TIME OF DAY, IBUS MILEAGE & QSI POINTS

- 5.1) ROUTE RECORD
As per Busnet Printout.
- 5.2) CURRENT PERFORMANCE
As per current print out.
- 5.3) QSI BY TIME OF DAY
As per current print out.
- 5.4) IBUS MILEAGE & QSI POINTS
As per current print out.

LONDON BUSES - ROUTE DESCRIPTION

ROUTE 13: Golders Green Station - Aldwych

Date of Structural Change: 31 August 2013.

Date of Service Change: 31 August 2013.

Reason for Issue: New Tender.

STREETS TRAVERSED

Towards Aldwych: Golders Green Bus Station Forecourt, North End Road, Finchley Road, Avenue Road, Adelaide Road, Finchley Road, Wellington Road, Park Road, Baker Street, Portman Square, Orchard Street, Oxford Street, Regent Street, Piccadilly Circus, Haymarket, Cockspur Street, Trafalgar Square (South Side), Strand, Aldwych.

Towards Golders Green Station: Strand, Charing Cross, Trafalgar Square (South Side), Cockspur Street, Pall Mall, Waterloo Place, Regent Street, Piccadilly Circus, Regent Street, Oxford Street, Portman Street, Portman Square, Gloucester Place, Park Road, Wellington Road, Finchley Road, North End Road, Golders Green Bus Station Forecourt.

AUTHORISED STANDS, CURTAILMENT POINTS, & BLIND DESCRIPTIONS

Please note that only stands, curtailment points, & blind descriptions as detailed in this contractual document may be used.

GOLDERS GREEN STATION FORECOURT, STAND G G

Private stand for 2 buses at Stop GG in Golders Green Bus Station on north side of North End Road. When stand is full buses should use overflow stand opposite Stops GI and GH.

Buses proceed from Golders Green Bus Station Forecourt direct to stand, departing to Golders Green Bus Station Forecourt. Set down in Golders Green Bus Station Forecourt, at Stop GG (R0799 - Golders Green Station <>, Last Stop on LOR: R0799 - Golders Green Station <>) and pick up in Golders Green Bus Station Forecourt, at Stop GG (R0799 - Golders Green Station <>, First Stop on LOR: R0799 - Golders Green Station <>).

AVAILABILITY: At any time.

OPERATING RESTRICTIONS: No more than 2 buses on Route 13 should be scheduled to stand at any one time.

MEAL RELIEFS: No meal relief vehicles to stand at any time.

FERRY VEHICLES: No ferry vehicles to park on stand at any time.

BLIND DISPLAY: Golders Green.

CHILDS HILL (from ALDWYCH)

Buses proceed from Finchley Road via Cricklewood Lane and Hendon Way departing to Finchley Road. Set down in Finchley Road, at Stop L (4705 - Childs Hill / Cricklewood Lane, Last Stop on LOR: 11992 - Lyndale Avenue) and pick up in Finchley Road, at Stop G (1463 - Fortune Green Road, First Stop on LOR: 1463 - Fortune Green Road).

AVAILABILITY: At any time.
OPERATING RESTRICTIONS: **Turning Point Only - Buses must not stand**
BLIND DISPLAY: Finchley Road, Hendon Way.

SWISS COTTAGE STATION, FINCHLEY ROAD (SOUTH)

Public stand for one bus in bay on west side of Finchley Road, commencing at a point 71 metres north of Hilgrove Road and extending 12 metres south.

From Aldwych.

Buses proceed from Finchley Road direct to stand, departing via Finchley Road to Avenue Road. Set down in Finchley Road, B (11964 - Boundary Road, Last Stop on LOR: 11964 - Boundary Road) and pick up in Avenue Road, at Stop D (34615 - Swiss Cottage Station<> / Avenue Road, First Stop on LOR: 34615 - Swiss Cottage Station<> / Avenue Road).

From Golders Green Station.

Buses proceed from Avenue Road via Adelaide Road and Finchley Road to stand, departing to Finchley Road. Set down in Avenue Road, at Stop D (34615 - Swiss Cottage Station<> / Avenue Road, Last Stop on LOR: 34615 - Swiss Cottage Station<> / Avenue Road) and pick up in Finchley Road, at Stop L (12034 - Swiss Cottage Stn <> / Finchley Rd, First Stop on LOR: 12034 - Swiss Cottage Stn <> / Finchley Rd).

AVAILABILITY: At any time.
OPERATING RESTRICTIONS: Unscheduled curtailments only.
MEAL RELIEFS: No meal relief vehicles to stand at any time.
FERRY VEHICLES: No ferry vehicles to park on stand at any time.
BLIND DISPLAY: Swiss Cottage.

BAKER STREET STATION (from Golders Green Station)

Buses proceed from Baker Street via York Street departing to Gloucester Place. Set down in Baker Street, at Stop B (14635 - Baker Street Station <>, Last Stop on LOR: 14635 - Baker Street Station <>) and pick up in Gloucester Place, at Stop Q (29799 - Marylebone Road, First Stop on LOR: 29799 - Marylebone Road).

AVAILABILITY: At any time.
OPERATING RESTRICTIONS: **Turning Point Only - Buses must not stand**
BLIND DISPLAY: Baker Street Station.

BAKER STREET STATION, ALLSOP PLACE

Public stand for four buses on west side of Allsop Place, commencing 12 metres east of lamp standard no. 3 and extending 56 metres east.

From Aldwych.

Buses proceed from Gloucester Place via Marylebone Road and Allsop Place to stand, departing via Allsop Place to Baker Street. Set down in Gloucester Place, at Stop Q (29799 - Marylebone Road, Last Stop on LOR: 29799 - Marylebone Road) and pick up in Baker Street, at Stop B (14635 - Baker Street Station <>, First Stop on LOR: 14635 - Baker Street Station <>).

From Golders Green Station.

Buses proceed from Baker Street via York Street, Gloucester Place, Marylebone Road and Allsop Place to stand, departing via Allsop Place, Baker Street and York Street to Gloucester Place. Set down in Baker Street, at Stop G (14635 - Baker Street Station <>, Last Stop on LOR: 14635 - Baker Street Station <>) and pick up in Gloucester Place, at Stop Q (29799 - Marylebone Road, First Stop on LOR: 29799 - Marylebone Road).

AVAILABILITY:	At any time.
OPERATING RESTRICTIONS:	Unscheduled curtailments only.
MEAL RELIEFS:	No meal relief vehicles to stand at any time.
FERRY VEHICLES:	No ferry vehicles to park on stand at any time.
BLIND DISPLAY:	Baker Street Station.

OXFORD STREET, SELFRIDGES (from Golders Green Station)

Buses proceed from Orchard Street via Oxford Street departing to Portman Street. Set down in Orchard Street, at Stop BZ (27706 - Orchard Street / Selfridges, Last Stop on LOR: 27706 - Orchard Street / Selfridges) and pick up in Portman Street, at Stop N (34006 - Portman Street / Marble Arch Station <>, First Stop on LOR: 34006 - Portman Street / Marble Arch Station <>).

AVAILABILITY:	At any time.
OPERATING RESTRICTIONS:	Turning Point Only - Buses must not stand
BLIND DISPLAY:	Portman Square.

OXFORD CIRCUS, JOHN PRINCES STREET, WEST SIDE (from Golders Green Station)

Public stand on west side of John Prince's Street, commencing at lamp standard No 206 and extending 31 metres north.

Buses proceed from Oxford Street via Regent Street, Margaret Street and John Prince's Street to stand, departing via John Prince's Street to Oxford Street. Set down in Oxford Street, at Stop OE (829 - Old Cavendish Street, Last Stop on LOR: 829 - Old Cavendish Street) and pick up in Oxford Street, at Stop OR (33630 - Oxford Circus, First Stop on LOR: 91511 - Oxford Circus).

AVAILABILITY: At any time.
OPERATING RESTRICTIONS: Unscheduled curtailments only.
MEAL RELIEFS: No meal relief vehicles to stand at any time.
FERRY VEHICLES: No ferry vehicles to park on stand at any time.
BLIND DISPLAY: Oxford Circus.

OXFORD CIRCUS, HOLLES STREET, WEST SIDE (from ALDWYCH)

Public stand for 6 buses on west side of Holles Street commencing 14 metres south of Cavendish Square and extending 76 metres south.

Buses proceed from Regent Street via Hanover Street, Hanover Square, Harewood Place and Holles Street to stand, departing via Holles Street, Cavendish Square (South Side), Henrietta Place and Vere Street to Oxford Street. Set down in Regent Street, at Alighting Point (BP4269 - Holles Street, Last Stop on LOR: 370 - Conduit Street / Hamleys Toy Store) and pick up in Oxford Street, at Stop OE (829 - Old Cavendish Street, First Stop on LOR: 829 - Old Cavendish Street).

AVAILABILITY: At any time.
OPERATING RESTRICTIONS: Unscheduled curtailments only.
MEAL RELIEFS: No meal relief vehicles to stand at any time.
FERRY VEHICLES: No ferry vehicles to park on stand at any time.
BLIND DISPLAY: Oxford Circus.

PICCADILLY CIRCUS, HAYMARKET (from Golders Green Station)

Buses proceed from Haymarket via Pall Mall and Waterloo Place departing to Regent Street. Set down in Haymarket, at Stop R (29867 - Haymarket, Last Stop on LOR: 29867 - Haymarket) and pick up in Waterloo Place, at Stop Z (17683 - Regent Street / Charles I I Street, First Stop on LOR: 17683 - Regent Street / Charles I I Street).

AVAILABILITY: At any time.
OPERATING RESTRICTIONS: **Turning Point Only - Buses must not stand**
BLIND DISPLAY: Piccadilly Circus.

ALDWYCH, EAST ARM

Public offside stand for 6 buses on south side of Aldwych (east arm) commencing 10 metres west of Melbourne Place and extending 67 metres west. Overflow public stand for 3 buses on south side of Strand commencing 10 metres east of Surrey Street and extending 36 metres east.

Buses proceed from Aldwych direct to stand, departing via Aldwych to Strand. Set down in Aldwych, at Stop E (20983 - Aldwych / Drury Lane, Last Stop on LOR: 20983 - Aldwych / Drury Lane) and pick up in Strand, at Stop R (34323 - Aldwych / Somerset House, First Stop on LOR: 34323 - Aldwych / Somerset House).

AVAILABILITY:	At any time.
OPERATING RESTRICTIONS:	No more than 2 buses on Route 13 should be scheduled to stand at any one time.
MEAL RELIEFS:	No meal relief vehicles to stand at any time.
FERRY VEHICLES:	No ferry vehicles to park on stand at any time.
BLIND DISPLAY:	Aldwych.
OTHER INFORMATION:	Toilet facilities available 24 hours.

LONDON BUSES - ROUTE DESCRIPTION

ROUTE N13: North Finchley - Aldwych

Date of Structural Change: 31 August 2013.

Date of Service Change: 31 August 2013.

Reason for Issue: New Tender.

STREETS TRAVERSED

Towards Aldwych: Tally Ho Bus Station, Ballards Lane, Regent's Park Road, Finchley Road, North End Road, Finchley Road, Avenue Road, Adelaide Road, Finchley Road, Wellington Road, Park Road, Baker Street, Portman Square (East Side), Orchard Street, Oxford Street, Regent Street, Piccadilly Circus, Haymarket, Cockspur Street, Trafalgar Square (South Side), Strand, Aldwych.

Towards North Finchley: Strand, Trafalgar Square, Trafalgar Square (South Side), Charing Cross, Cockspur Street, Pall Mall, Waterloo Place, Regent Street, Piccadilly Circus, Regent Street, Oxford Street, Portman Street, Portman Square (West Side), Gloucester Place, Park Road, Wellington Road, Finchley Road, Regent's Park Road, Ballards Lane, Kingsway.

AUTHORISED STANDS, CURTAILMENT POINTS, & BLIND DESCRIPTIONS

Please note that only stands, curtailment points, & blind descriptions as detailed in this contractual document may be used.

NORTH FINCHLEY BUS STATION (REAR)

Private stand for 1 bus in marked 'Stand 3' bay inside rear entrance of North Finchley Bus Station.

Buses proceed from Kingsway via North Finchley High Road and Tally Ho Bus Station to stand, departing to Tally Ho Bus Station. Set down in Kingsway, at Stop S (BP4376 - North Finchley Bus Station, Last Stop on LOR: BP4376 - North Finchley Bus Station) and pick up in Tally Ho Bus Station, at Stop P (OC568 - North Finchley Bus Station, First Stop on LOR: OC568 - North Finchley Bus Station).

AVAILABILITY:	At any time.
OPERATING RESTRICTIONS:	No more than 2 buses on Route N13 should be scheduled to stand at any one time.
MEAL RELIEFS:	No meal relief vehicles to stand at any time.
FERRY VEHICLES:	No ferry vehicles to park on stand at any time.
BLIND DISPLAY:	North Finchley.
OTHER INFORMATION:	LBSL toilet facilities available 24 hours.

FINCHLEY CENTRAL, HENDON LANE (from ALDWYCH)

Public stand for two buses in bay on west side of Hendon Lane, outside St Mary's Church, commencing 20 metres south of a point opposite the centre of College Terrace.

Buses proceed from Regent's Park Road via Gravel Hill and Hendon Lane to stand, departing via Hendon Lane to Regent's Park Road. Set down in Regent's Park Road, K (2765 - East End Road, Last Stop on LOR: 2765 - East End Road) and pick up in Regent's Park Road, at Stop H (15677 - Hendon Lane, First Stop on LOR: 15677 - Hendon Lane).

AVAILABILITY:	At any time.
OPERATING RESTRICTIONS:	Unscheduled curtailments only.
MEAL RELIEFS:	No meal relief vehicles to stand at any time.
FERRY VEHICLES:	No ferry vehicles to park on stand at any time.
BLIND DISPLAY:	Finchley Central.

GOLDERS GREEN STATION FORECOURT, STAND G Z (from ALDWYCH)

Private (unlettered) stand for 4 buses opposite Stops GH and GI in Golders Green Bus Station on north side of North End Road.

Buses proceed from Finchley Road via North End Road and Golders Green Bus Station Forecourt to stand, departing via Golders Green Bus Station Forecourt and North End Road to Finchley Road. Set down in Finchley Road, at Stop GM (2771 - Golders Green / Finchley Road, Last Stop on LOR: 2771 - Golders Green / Finchley Road) and pick up in Finchley Road, at Stop GL (6085 - Golders Green / Finchley Road, First Stop on LOR: 6085 - Golders Green / Finchley Road).

AVAILABILITY:	At any time.
OPERATING RESTRICTIONS:	Unscheduled curtailments only
MEAL RELIEFS:	No meal relief vehicles to stand at any time.
FERRY VEHICLES:	No ferry vehicles to park on stand at any time.
BLIND DISPLAY:	Golders Green.

CHILDS HILL (from ALDWYCH)

Buses proceed from Finchley Road via Cricklewood Lane and Hendon Way departing to Finchley Road. Set down in Finchley Road, at Stop L (4705 - Childs Hill / Cricklewood Lane, Last Stop on LOR: 4705 - Childs Hill / Cricklewood Lane) and pick up in Finchley Road, at Stop G (1463 - Fortune Green Road, First Stop on LOR: 1463 - Fortune Green Road).

AVAILABILITY:	At any time.
OPERATING RESTRICTIONS:	Turning Point Only - Buses must not stand
BLIND DISPLAY:	Finchley Road, Hendon Way.

SWISS COTTAGE STATION, FINCHLEY ROAD (SOUTH)

Public stand for one bus in bay on west side of Finchley Road, commencing at a point 71 metres north of Hilgrove Road and extending 12 metres south.

From Aldwych.

Buses proceed from Finchley Road direct to stand, departing via Finchley Road to Avenue Road. Set down in Finchley Road, B (11964 - Boundary Road, Last Stop on LOR: 11964 - Boundary Road) and pick up in Avenue Road, at Stop D (34615 - Swiss Cottage Station<> / Avenue Road, First Stop on LOR: 34615 - Swiss Cottage Station<> / Avenue Road).

From North Finchley.

Buses proceed from Avenue Road via Adelaide Road and Finchley Road to stand, departing to Finchley Road. Set down in Avenue Road, at Stop D (34615 - Swiss Cottage Station<> / Avenue Road, Last Stop on LOR: 34615 - Swiss Cottage Station<> / Avenue Road) and pick up in Finchley Road, at Stop L (12034 - Swiss Cottage Stn <> / Finchley Rd, First Stop on LOR: 12034 - Swiss Cottage Stn <> / Finchley Rd).

AVAILABILITY:	At any time.
OPERATING RESTRICTIONS:	Unscheduled curtailments only.
MEAL RELIEFS:	No meal relief vehicles to stand at any time.
FERRY VEHICLES:	No ferry vehicles to park on stand at any time.
BLIND DISPLAY:	Swiss Cottage.

BAKER STREET STATION (from North Finchley)

Buses proceed from Baker Street via York Street departing to Gloucester Place. Set down in Baker Street, at Stop B (14635 - Baker Street Station <>, Last Stop on LOR: 14635 - Baker Street Station <>) and pick up in Gloucester Place, at Stop Q (29799 - Marylebone Road, First Stop on LOR: 29799 - Marylebone Road).

AVAILABILITY:	At any time.
OPERATING RESTRICTIONS:	Turning Point Only - Buses must not stand
BLIND DISPLAY:	Baker Street Station.

BAKER STREET STATION, ALLSOP PLACE

Public stand for four buses on west side of Allsop Place, commencing 12 metres east of lamp standard no. 3 and extending 56 metres east.

From Aldwych.

Buses proceed from Gloucester Place via Marylebone Road and Allsop Place to stand, departing via Allsop Place to Baker Street. Set down in Gloucester Place, at Stop Q (29799 - Marylebone Road, Last Stop on LOR: 29799 - Marylebone Road) and pick up in Baker Street, at Stop B (14635 - Baker Street Station <>, First Stop on LOR: 14635 - Baker Street Station <>).

From North Finchley.

Buses proceed from Baker Street via York Street, Gloucester Place, Marylebone Road and Allsop Place to stand, departing via Allsop Place, Baker Street and York Street to Gloucester Place. Set down in Baker Street, at Stop B (14635 - Baker Street Station <>, Last Stop on LOR: 14635 - Baker Street Station <>) and pick up in Gloucester Place, at Stop Q (29799 - Marylebone Road, First Stop on LOR: 29799 - Marylebone Road).

AVAILABILITY:	At any time.
OPERATING RESTRICTIONS:	Unscheduled curtailments only.
MEAL RELIEFS:	No meal relief vehicles to stand at any time.
FERRY VEHICLES:	No ferry vehicles to park on stand at any time.
BLIND DISPLAY:	Baker Street Station.

OXFORD STREET, SELFRIDGES (from North Finchley)

Buses proceed from Orchard Street via Oxford Street departing to Portman Street. Set down in Orchard Street, at Stop BZ (27706 - Orchard Street / Selfridges, Last Stop on LOR: 14635 - Baker Street Station <>) and pick up in Portman Street, at Stop N (34006 - Portman Street / Marble Arch Station <>, First Stop on LOR: 34006 - Portman Street / Marble Arch Station <>).

AVAILABILITY:	At any time.
OPERATING RESTRICTIONS:	Turning Point Only - Buses must not stand
BLIND DISPLAY:	Portman Square.

OXFORD CIRCUS, JOHN PRINCES STREET, WEST SIDE (from North Finchley)

Public stand on west side of John Prince's Street, commencing at lamp standard No 206 and extending 31 metres north.

Buses proceed from Oxford Circus via Regent Street, Margaret Street and John Prince's Street to stand, departing via John Prince's Street to Oxford Street. Set down in Oxford Street, at Stop OE (829 - Old Cavendish Street, Last Stop on LOR: 14635 - Baker Street Station <>) and pick up in Oxford Street, at Stop OR (33630 - Oxford Circus, First Stop on LOR: 33630 - Oxford Circus).

AVAILABILITY: At any time.
OPERATING RESTRICTIONS: Unscheduled curtailments only.
MEAL RELIEFS: No meal relief vehicles to stand at any time.
FERRY VEHICLES: No ferry vehicles to park on stand at any time.
BLIND DISPLAY: Oxford Circus.

PICCADILLY CIRCUS, HAYMARKET (from North Finchley)

Buses proceed from Haymarket via Pall Mall and Waterloo Place departing to Regent Street. Set down in Haymarket, at Stop R (29867 - Haymarket, Last Stop on LOR: 29867 - Haymarket) and pick up in Regent Street, at Stop Z (17683 - Regent Street / Charles I I Street, First Stop on LOR: 17683 - Regent Street / Charles I I Street).

AVAILABILITY: At any time.
OPERATING RESTRICTIONS: **Turning Point Only - Buses must not stand**
BLIND DISPLAY: Piccadilly Circus.

TRAFALGAR SQUARE, NORTHUMBERLAND AVENUE, SOUTH SIDE (from North Finchley)

Public stand for four buses on south side of Northumberland Avenue in 2 parts:
1. For two buses commencing at a point 16 metres east of the centre-line of Great Scotland Yard, extending 25 metres east;
2. For two buses commencing at a point 55 metres west of centre-line of Whitehall Place, extending 25 metres east.

Buses proceed from Cockspur Street via Trafalgar Square (South Side), Charing Cross, Whitehall, Whitehall Place and Northumberland Avenue to stand, departing via Northumberland Avenue, Charing Cross and Trafalgar Square (South Side) to Cockspur Street. Set down in Cockspur Street, at Stop B (BP3509 - Trafalgar Square, Last Stop on LOR: BP3509 - Trafalgar Square) and pick up in Cockspur Street, at Stop T (BP3503 - Trafalgar Square, First Stop on LOR: BP3503 - Trafalgar Square).

AVAILABILITY: At any time.
OPERATING RESTRICTIONS: Unscheduled curtailments only.
MEAL RELIEFS: No meal relief vehicles to stand at any time.
FERRY VEHICLES: No ferry vehicles to park on stand at any time.
BLIND DISPLAY: Trafalgar Square.

ALDWYCH, EAST ARM

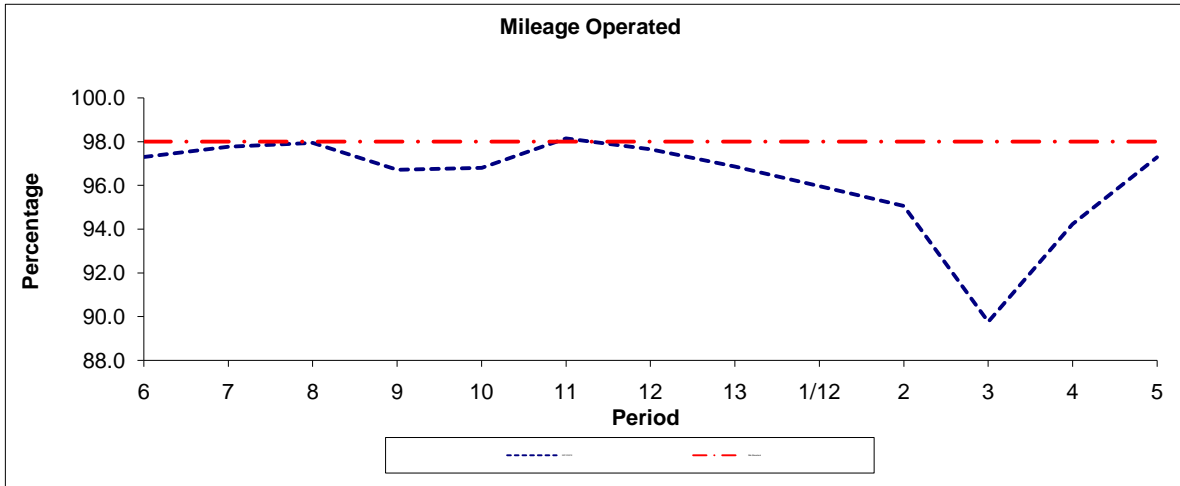
Public offside stand for 6 buses on south side of Aldwych (east arm) commencing 10 metres west of Melbourne Place and extending 67 metres west. Overflow public stand for 3 buses on south side of Strand commencing 10 metres east of Surrey Street and extending 36 metres east.

Buses proceed from Aldwych direct to stand, departing via Aldwych to Strand. Set down in Aldwych, at Stop D (20983 - Aldwych / Drury Lane, Last Stop on LOR: 20983 - Aldwych / Drury Lane) and pick up in Strand, at Stop R (34323 - Aldwych / Somerset House, First Stop on LOR: 34323 - Aldwych / Somerset House).

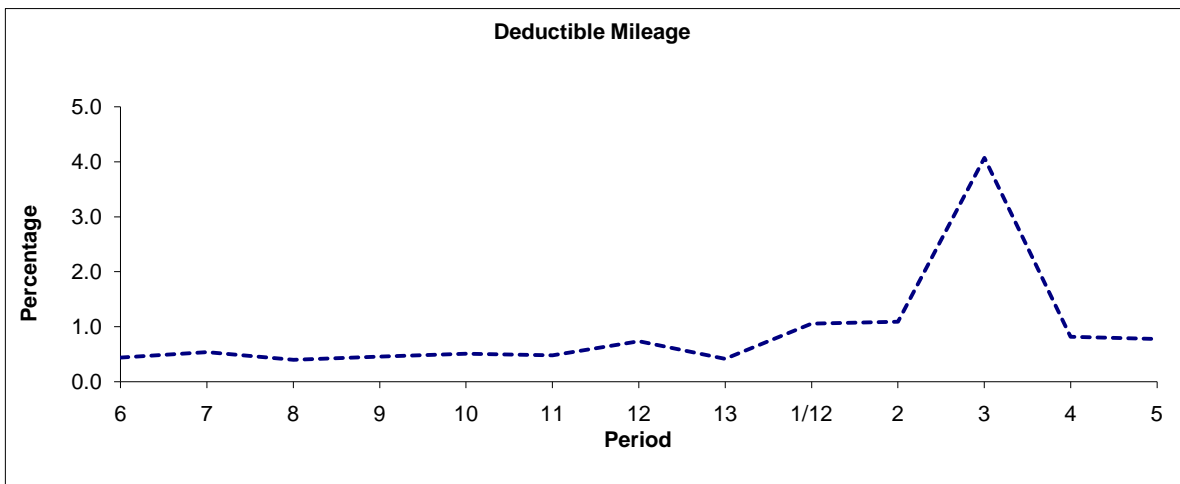
AVAILABILITY:	At any time.
OPERATING RESTRICTIONS:	No more than 2 buses on Route N13 should be scheduled to stand at any one time.
MEAL RELIEFS:	No meal relief vehicles to stand at any time.
FERRY VEHICLES:	No ferry vehicles to park on stand at any time.
BLIND DISPLAY:	Aldwych.
OTHER INFORMATION:	Toilet facilities available 24 hours. Overflow stand available in Strand.

PART B - PERFORMANCE STATISTICS

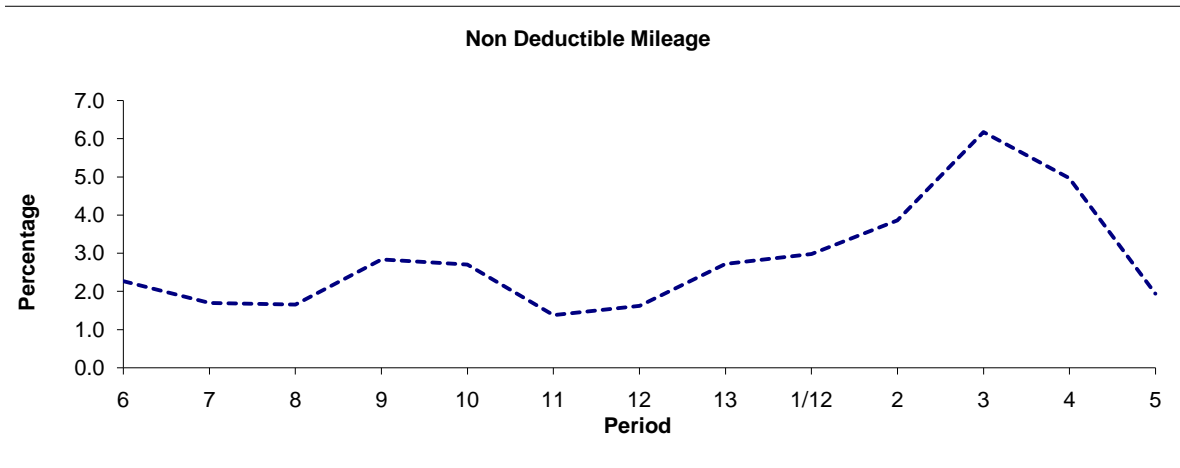
Route 13



Period	6	7	8	9	10	11	12	13	1/12	2	3	4	5
2011/2012	97.29	97.76	97.94	96.70	96.79	98.14	97.64	96.86	95.96	95.05	89.76	94.22	97.28
Min Standard	98.00	98.00	98.00	98.00	98.00	98.00	98.00	98.00	98.00	98.00	98.00	98.00	98.00



Period	6	7	8	9	10	11	12	13	1/12	2	3	4	5
2011/2012	0.44	0.54	0.40	0.46	0.51	0.48	0.74	0.42	1.06	1.09	4.07	0.82	0.78

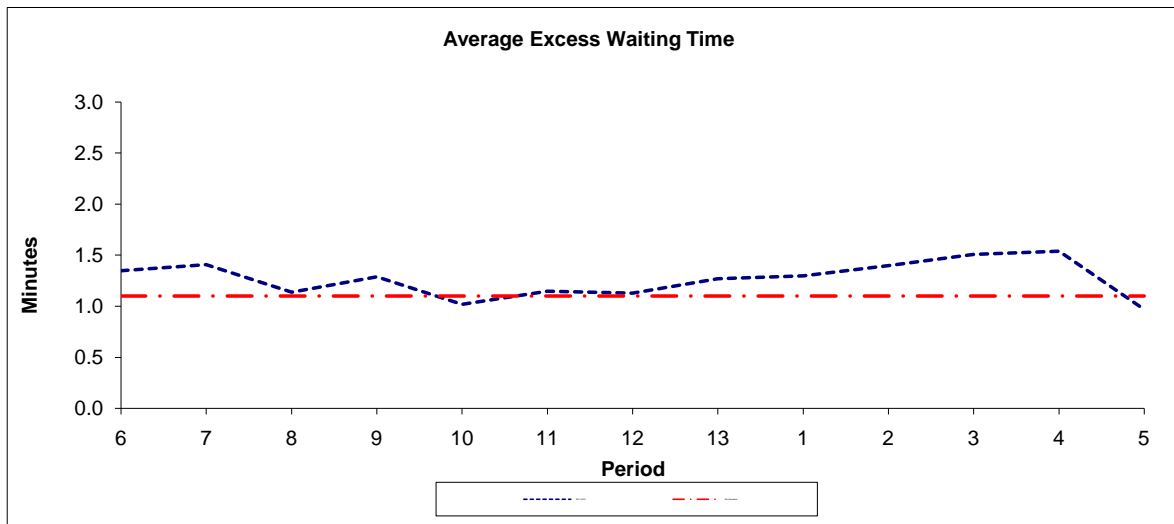


Period	6	7	8	9	10	11	12	13	1/12	2	3	4	5
2011/2012	2.27	1.70	1.66	2.84	2.70	1.38	1.62	2.72	2.98	3.86	6.17	4.96	1.94

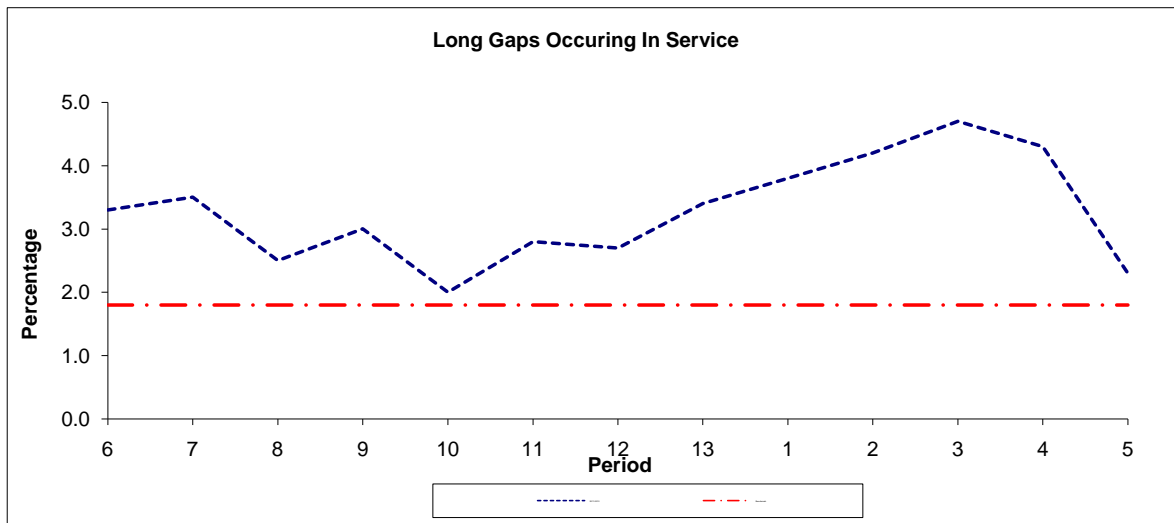
Note : Mileage is based on 4 weeks data
 Performance affected by industrial action in p3 2012/13.

PART B - PERFORMANCE STATISTICS

Route 13



Period	6	7	8	9	10	11	12	13	1	2	3	4	5
2011-2012	1.35	1.41	1.14	1.29	1.02	1.15	1.13	1.27	1.30	1.40	1.51	1.54	0.97
Min Standard	1.10	1.10	1.10	1.10	1.10	1.10	1.10	1.10	1.10	1.10	1.10	1.10	1.10

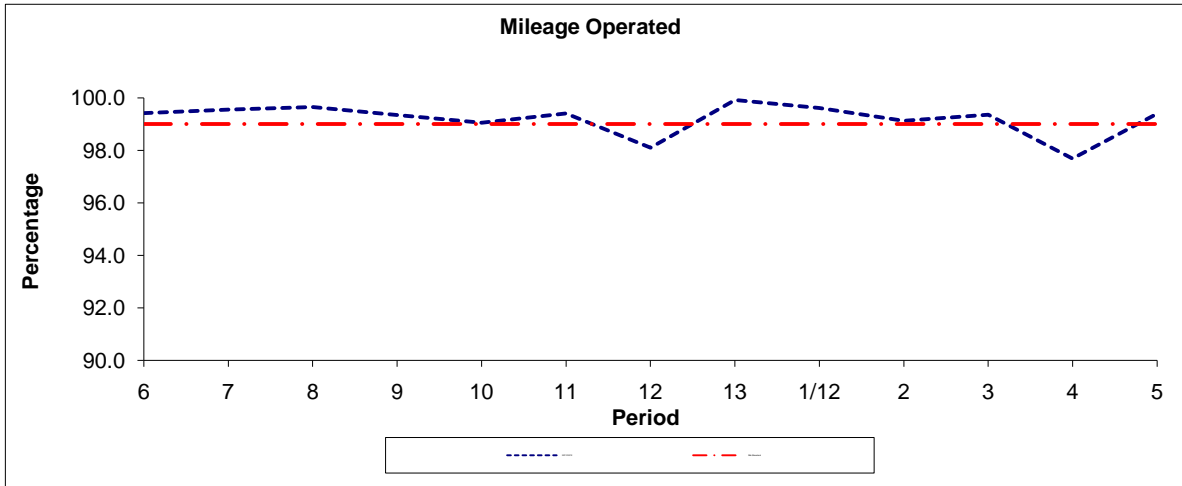


Period	6	7	8	9	10	11	12	13	1	2	3	4	5
2011-2012	3.30	3.50	2.50	3.00	2.00	2.80	2.70	3.40	3.80	4.20	4.70	4.30	2.30
Benchmark	1.80	1.80	1.80	1.80	1.80	1.80	1.80	1.80	1.80	1.80	1.80	1.80	1.80

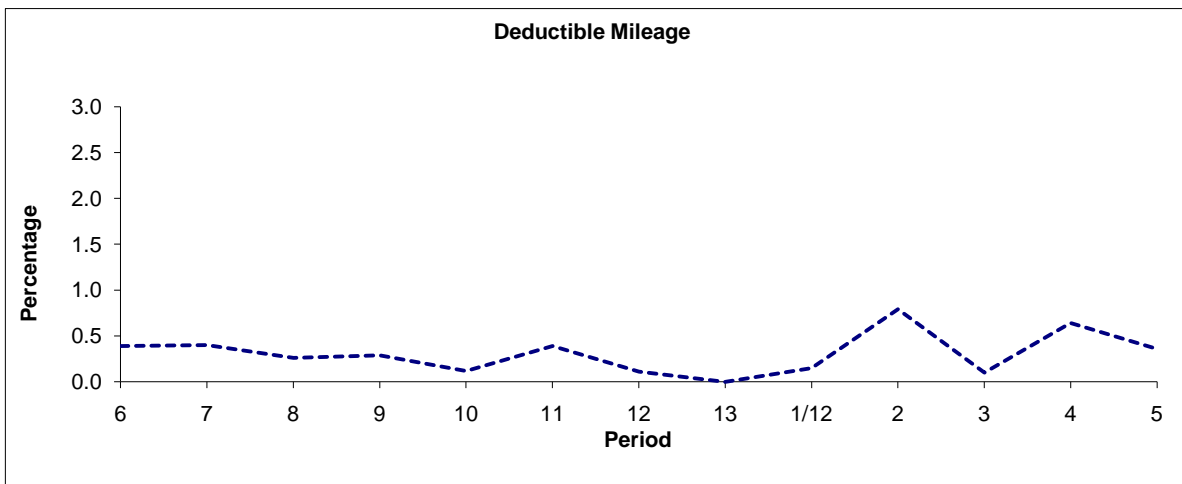
Note : Reliability is actual performance under full iBus (4 weeks data).
 Minimum Standards and Benchmarks are those applicable under the new contract.

PART B - PERFORMANCE STATISTICS

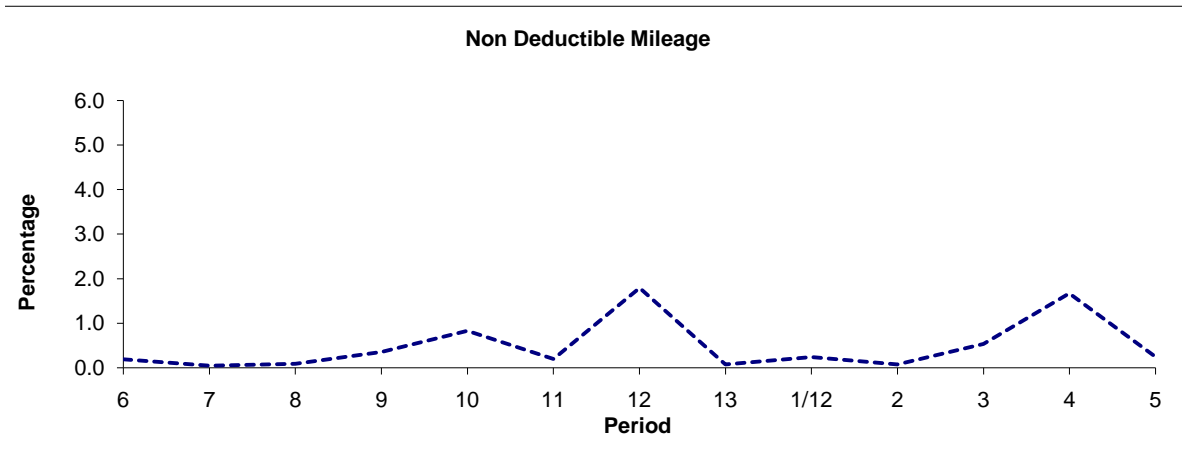
Route N13



Period	6	7	8	9	10	11	12	13	1/12	2	3	4	5
2011/2012	99.42	99.55	99.65	99.35	99.05	99.41	98.10	99.92	99.61	99.13	99.36	97.69	99.39
Min Standard	99.00	99.00	99.00	99.00	99.00	99.00	99.00	99.00	99.00	99.00	99.00	99.00	99.00



Period	6	7	8	9	10	11	12	13	1/12	2	3	4	5
2011/2012	0.39	0.40	0.26	0.29	0.12	0.39	0.11	0.00	0.15	0.79	0.10	0.64	0.36

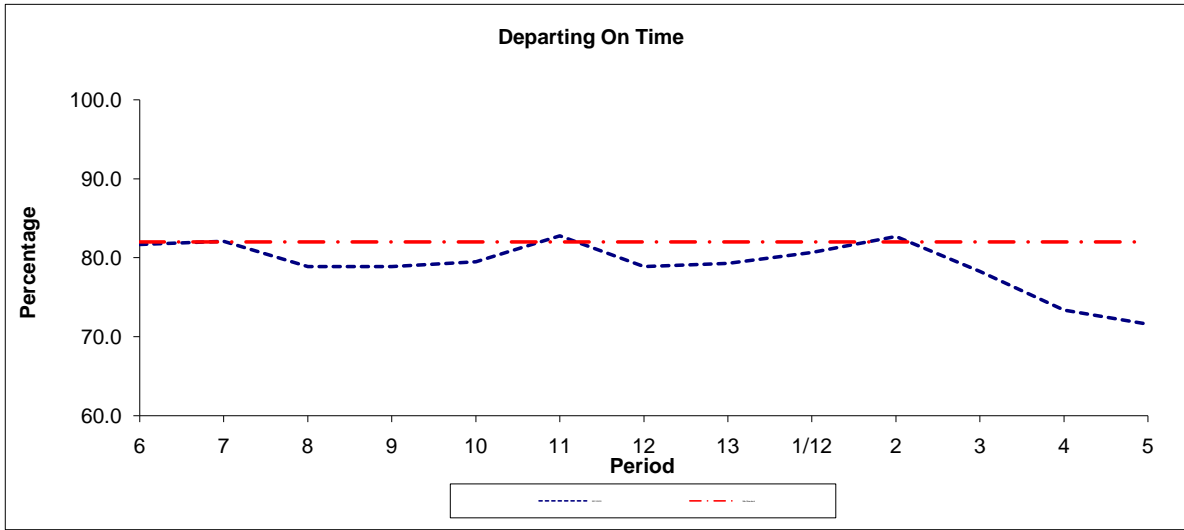


Period	6	7	8	9	10	11	12	13	1/12	2	3	4	5
2011/2012	0.19	0.05	0.09	0.36	0.83	0.20	1.79	0.08	0.24	0.08	0.54	1.67	0.25

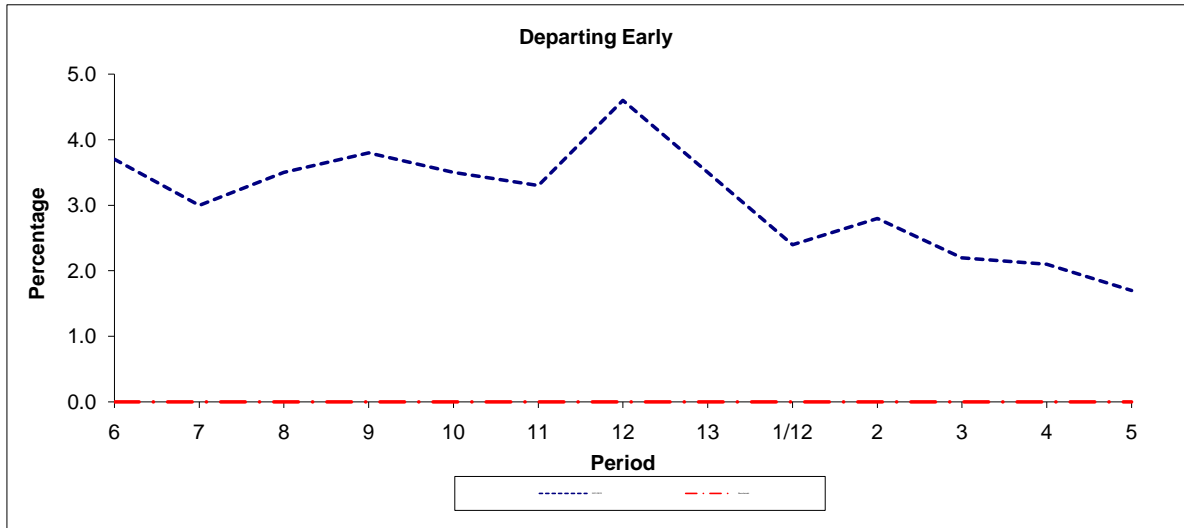
Note : Mileage is based on 4 weeks data

PART B - PERFORMANCE STATISTICS

Route N13



Period	6	7	8	9	10	11	12	13	1/12	2	3	4	5
2011/2012	81.70	82.10	78.90	78.90	79.50	82.80	78.90	79.30	80.70	82.70	78.30	73.40	71.60
Min Standard	82.00	82.00	82.00	82.00	82.00	82.00	82.00	82.00	82.00	82.00	82.00	82.00	82.00



Period	6	7	8	9	10	11	12	13	1/12	2	3	4	5
2011/2012	3.70	3.00	3.50	3.80	3.50	3.30	4.60	3.50	2.40	2.80	2.20	2.10	1.70
Benchmark	0.00	0.00	0.00	0.00	0.00	0.00	0.00	0.00	0.00	0.00	0.00	0.00	0.00

Note : Reliability is actual performance under full iBus (4 weeks data).
 Minimum Standards and Benchmarks are those applicable under the new contract.

ROUTE 13 - FULL iBUS RESULTS BY TIME OF DAY
QUARTERS 2 11/12 TO 1 12/13 (25/06/11 - 22/06/12)

MONDAY - FRIDAY

Time Period	Expected Buses	On AVL (%)	Scheduled Waiting Time (SWT) (mins)	Excess Waiting Time (EWT) (mins)	Actual Waiting Time (AWT) (mins)	Probability of Waiting < 10 mins (%)	Probability of Waiting 10-20 mins (%)	Probability of Waiting 20-30 mins (%)	Probability of Waiting > 30 mins (%)	Long Gaps (%)	Maximum Gap (mins)
0500 - 0700	19,314.	94.4	6.45	0.60	7.05	83.3	15.7	0.9	0.1	0.9	60.1
0700 - 1000	98,311.	95.5	3.87	1.00	4.88	90.2	9.3	0.5	0.1	2.2	52.6
1000 - 1300	97,368.	95.2	3.73	1.39	5.12	87.1	11.4	1.2	0.3	4.3	63.3
1300 - 1600	94,291.	96.5	3.78	1.38	5.16	86.8	11.6	1.3	0.3	4.3	83.2
1600 - 1900	96,731.	93.1	3.75	1.67	5.41	84.6	13.4	1.7	0.3	5.5	65.3
1900 - 2200	68,757.	101.3	5.23	1.57	6.79	75.2	20.9	3.3	0.7	3.9	69.3
2200 - 2400	36,091.	98.8	6.61	1.06	7.67	69.1	28.1	2.4	0.3	0.8	66.3
Summary	510,863.	96.2	4.15	1.36	5.51	84.8	13.4	1.5	0.3	3.9	83.2

SATURDAY

Time Period	Expected Buses	On AVL (%)	Scheduled Waiting Time (SWT) (mins)	Excess Waiting Time (EWT) (mins)	Actual Waiting Time (AWT) (mins)	Probability of Waiting < 10 mins (%)	Probability of Waiting 10-20 mins (%)	Probability of Waiting 20-30 mins (%)	Probability of Waiting > 30 mins (%)	Long Gaps (%)	Maximum Gap (mins)
0500 - 0700	3,230.	95.6	7.47	0.78	8.25	74.0	23.1	2.2	0.7	1.8	76.5
0700 - 1000	14,951.	96.8	5.12	0.76	5.88	85.1	14.3	0.6	0.0	0.6	49.8
1000 - 1300	17,692.	96.6	4.26	1.13	5.39	87.2	11.3	1.1	0.3	2.6	60.9
1300 - 1600	16,830.	96.3	4.28	1.41	5.68	84.4	13.2	1.7	0.7	3.9	73.0
1600 - 1900	16,532.	96.3	4.47	1.67	6.14	80.5	16.7	2.3	0.5	4.3	53.7
1900 - 2200	13,027.	99.0	5.55	2.03	7.58	70.9	23.6	4.3	1.3	4.2	84.8
2200 - 2400	7,649.	96.1	6.67	1.45	8.12	66.3	28.8	3.8	1.0	1.9	60.3
Summary	89,911.	96.8	4.76	1.38	6.13	81.7	15.8	2.0	0.6	3.2	84.8

SUNDAY AND BANK HOLIDAYS

Time Period	Expected Buses	On AVL (%)	Scheduled Waiting Time (SWT) (mins)	Excess Waiting Time (EWT) (mins)	Actual Waiting Time (AWT) (mins)	Probability of Waiting < 10 mins (%)	Probability of Waiting 10-20 mins (%)	Probability of Waiting 20-30 mins (%)	Probability of Waiting > 30 mins (%)	Long Gaps (%)	Maximum Gap (mins)
0500 - 0700	3,086.	97.9	7.50	0.84	8.34	73.5	22.9	2.6	0.9	1.8	77.0
0700 - 1000	11,701.	98.8	6.98	0.55	7.52	70.6	27.9	1.2	0.2	0.3	60.0
1000 - 1300	14,285.	97.3	5.97	0.73	6.70	77.3	21.3	1.2	0.2	0.5	66.1
1300 - 1600	14,051.	98.5	5.98	1.10	7.08	74.4	22.7	2.4	0.5	1.3	65.6
1600 - 1900	14,405.	96.2	5.85	1.43	7.28	73.2	23.3	2.9	0.7	1.9	60.7
1900 - 2200	15,040.	100.1	5.73	1.07	6.79	77.3	20.5	1.9	0.3	1.2	51.3
2200 - 2400	8,284.	98.3	6.64	0.59	7.24	71.4	27.6	0.9	0.1	0.2	49.9
Summary	80,852.	98.2	6.07	1.01	7.08	74.6	23.0	2.0	0.4	1.1	77.0

ALL DAYS

Time Period	Expected Buses	On AVL (%)	Scheduled Waiting Time (SWT) (mins)	Excess Waiting Time (EWT) (mins)	Actual Waiting Time (AWT) (mins)	Probability of Waiting < 10 mins (%)	Probability of Waiting 10-20 mins (%)	Probability of Waiting 20-30 mins (%)	Probability of Waiting > 30 mins (%)	Long Gaps (%)	Maximum Gap (mins)
0500 - 0700	25,630.	95.0	6.62	0.63	7.25	81.7	16.9	1.1	0.2	1.0	77.0
0700 - 1000	124,963.	96.0	4.13	0.96	5.09	88.8	10.6	0.5	0.1	2.0	60.0
1000 - 1300	129,345.	95.6	4.07	1.28	5.35	86.0	12.5	1.2	0.3	3.6	66.1
1300 - 1600	125,172.	96.7	4.08	1.36	5.44	85.1	13.0	1.5	0.4	4.0	83.2
1600 - 1900	127,668.	93.8	4.02	1.65	5.67	83.1	14.7	1.9	0.3	5.1	65.3
1900 - 2200	96,824.	100.8	5.32	1.57	6.89	74.9	21.2	3.2	0.7	3.7	84.8
2200 - 2400	52,024.	98.4	6.62	1.05	7.67	69.1	28.1	2.4	0.4	0.9	66.3
Summary	681,626.	96.5	4.41	1.33	5.74	83.5	14.6	1.6	0.3	3.5	84.8

ROUTE N13 - FULL iBUS RESULTS BY TIME OF DAY QUARTERS 2 11/12 TO 1 12/13 (25/06/11 - 22/06/12)

MONDAY - FRIDAY

Time Period	Expected Buses	On AVL (%)	Linked (%)	Departing On Time (%)	Non Arrival / Not Linked (%)	Departing 8 - 2.5 mins Early (%)	Departing 5 - 15 mins Late (%)
0000 - 0500	86,905.	98.8	97.8	83.3	2.6	3.2	10.9
Summary	86,905.	98.8	97.8	83.3	2.6	3.2	10.9

SATURDAY

Time Period	Expected Buses	On AVL (%)	Linked (%)	Departing On Time (%)	Non Arrival / Not Linked (%)	Departing 8 - 2.5 mins Early (%)	Departing 5 - 15 mins Late (%)
0000 - 0500	26,043.	98.5	95.4	79.4	6.1	3.8	10.7
Summary	26,043.	98.5	95.4	79.4	6.1	3.8	10.7

SUNDAY AND BANK HOLIDAYS

Time Period	Expected Buses	On AVL (%)	Linked (%)	Departing On Time (%)	Non Arrival / Not Linked (%)	Departing 8 - 2.5 mins Early (%)	Departing 5 - 15 mins Late (%)
0000 - 0500	28,081.	98.4	93.3	73.8	9.3	3.0	13.9
Summary	28,081.	98.4	93.3	73.8	9.3	3.0	13.9

ALL DAYS

Time Period	Expected Buses	On AVL (%)	Linked (%)	Departing On Time (%)	Non Arrival / Not Linked (%)	Departing 8 - 2.5 mins Early (%)	Departing 5 - 15 mins Late (%)
0000 - 0500	141,029.	98.6	96.4	80.1	5.0	3.3	11.6
Summary	141,029.	98.6	96.4	80.1	5.0	3.3	11.6

Transport for London - Mileage and QSI Points

Route 13
 Service change 26473
 Date 30/04/2012

Reason for Issue

Locations shaded in blue denote QSI points under Full iBus

OUT DIRECTION				
Timing Point Code	Stop Number	Stop Name	Metres	Miles
GGSNFGG	R0799	Golders Green Station**		
GGSNCT	6085	Golders Green / Finchley Road**	232	0.14
	6083	Dunstan Road	332	0.21
	6081	Llanvanor Road	313	0.19
	766	Childs Hill / Cricklewood Lane	223	0.14
	9357	Lyndale Avenue	373	0.23
FNRDPL	1463	Fortune Green Road	175	0.11
	12026	Burrard Road	349	0.22
	137	Lyncroft Gardens	210	0.13
	37634	West End Lane	208	0.13
	117	Alvanley Court	175	0.11
	12028	Langland Gardens	200	0.12
	1219	Finchley Road & Frognal Station	264	0.16
	12030	O2 Centre	289	0.18
FNRDSN	1331	Finchley Road Station	160	0.10
	33798	Finchley Road / College Crescent	362	0.22
SCOTSN	34615	Swiss Cottage Station / Avenue Road	195	0.12
	12037	Boundary Road	505	0.31
	1027	Queens Grove	294	0.18
	2193	St John's Wood Station	373	0.23
	4804	Lords Cricket Ground	465	0.29
	2737	Park Road / Lords Cricket Ground	288	0.18
	11321	Alpha Close	266	0.17
	1052	Rossmore Road	237	0.15
BKSTSN	14635	Baker Street Station	494	0.31
	29807	York Street	199	0.12
	1588	George Street	377	0.23
ORCHSF	27706	Orchard Street / Selfridges	396	0.25
OXFCOS	829	Old Cavendish Street	594	0.37
	16575	Oxford Circus Station	381	0.24
	7849	Conduit Street / Hamleys Toy Store	358	0.22
PCIRRS	149	Piccadilly Circus	408	0.25
	29867	Haymarket	407	0.25
	BP3509	Trafalgar Square	214	0.13
TFSQCC	BP3505	Trafalgar Square / Charing Cross Stn	212	0.13
	7853	Southampton Street	398	0.25
AWCHWA	20983	Aldwych / Drury Lane	381	0.24
Total Route Mileage - Out Direction			11307	7.03
			11307	7.03

** It is intended to replace the QSI point at Golders Green Finchley Road with one at Golders Green Station at a future date.

Tranche 423

BACK DIRECTION				
Timing Point Code	Stop Number	Stop Name	Metres	Miles
AWCHSM	34323	Aldwych / Somerset House		
	14627	Savoy Street	314	0.20
	7852	Bedford Street	238	0.15
TFSQCC	35730	Charing Cross Station	207	0.13
	BP3503	Trafalgar Square	366	0.23
	17683	Regent Street / Charles I I Street	333	0.21
PCIRRS	155	Piccadilly Circus	299	0.19
	370	Conduit Street / Hamleys Toy Store	375	0.23
OXFCOS	91511		652	0.41
	91530	Selfridges	497	0.31
PTMSOS	34006	Portman Street / Marble Arch Station	391	0.24
	29796	George Street	233	0.14
	29797	Dorset Street	224	0.14
	29799	Marylebone Road	264	0.16
DORSSQ	29803	Dorset Square / Marylebone Station	293	0.18
	1051	Alpha Close	503	0.31
	2738	Park Road / Lord's Cricket Ground	308	0.19
	730	Lords Cricket Ground	240	0.15
	1436	St John's Wood Station	457	0.28
	1026	Queens Grove	409	0.25
	11964	Boundary Road	390	0.24
SCOTSN	12034	Swiss Cottage Stn / Finchley Road	328	0.20
	33966	College Crescent	215	0.13
FNRDSN	BP4548	Finchley Road Station	304	0.19
	16153	Finchley Road / O2 Centre	160	0.10
	1218	Finchley Road & Frognal Station	312	0.19
	12027	Langland Gardens	208	0.13
	116	West End Lane	191	0.12
	136	Lyncroft Gardens	444	0.28
FNRDPL	1464	Fortune Green Road	321	0.20
	11992	Lyndale Avenue	406	0.25
	4705	Childs Hill / Cricklewood Lane	218	0.14
	6082	Llanvanor Road	326	0.20
	6084	Dunstan Road	281	0.17
	2771	Golders Green / Finchley Road	402	0.25
GGSNFGG	R0799	Golders Green Station	143	0.09
Total Route Mileage - Back Direction			11252	6.99
			11252	6.99

Transport for London - Mileage and QSI Points

Route N13

Service change 26481

Date 30/04/2012

Reason for Issue

Locations shaded in blue denote QSI points under Full iBus

OUT DIRECTION				
Timing Point Code	Stop Number	Stop Name	Metres	Miles
NTFYBS	OC568	North Finchley Bus Station		
	6114	Christchurch Avenue	432	0.27
	6112	Granville Road	140	0.09
	6108	Essex Park	348	0.22
	2758	Long Lane	394	0.24
FNCHCS	2760	Finchley Central Station	288	0.18
	15677	Hendon Lane	397	0.25
	2297	East End Road	203	0.13
	6099	Mountfield Road	440	0.27
	6097	Allandale Avenue	257	0.16
FNCHHC	2766	Henlys Corner	150	0.09
	2799	Addison Way	286	0.18
	6092	Childs Way	369	0.23
	2299	Temple Fortune Lane	352	0.22
	6090	Clifton Gardens	169	0.11
	2800	Hoop Lane	389	0.24
GGSNFR	2768	Golders Green Station	424	0.26
	6085	Golders Green / Finchley Road	251	0.16
	6083	Dunstan Road	332	0.21
	6081	Llanvanor Road	313	0.19
	766	Childs Hill / Cricklewood Lane	223	0.14
	9357	Lyndale Avenue	373	0.23
FNRDPL	1463	Fortune Green Road	175	0.11
	12026	Burrard Road	349	0.22
	137	Lyncroft Gardens	210	0.13
	37634	West End Lane	208	0.13
	117	Alvanley Court	175	0.11
	12028	Langland Gardens	200	0.12
	1219	Finchley Road & Frognal Station	264	0.16
	12030	O2 Centre	289	0.18
FNRDSN	1331	Finchley Road Station	160	0.10
	33798	Finchley Road / College Crescent	362	0.22
SCOTSN	34615	Swiss Cottage Station / Avenue Road	195	0.12
	12037	Boundary Road	505	0.31
	1027	Queens Grove	294	0.18
	2193	St John's Wood Station	373	0.23
	4804	Lords Cricket Ground	465	0.29
	2737	Park Road / Lords Cricket Ground	288	0.18
	11321	Alpha Close	266	0.17
	1052	Rossmore Road	237	0.15
BKSTSN	14635	Baker Street Station	494	0.31
	29807	York Street	199	0.12
	1588	George Street	377	0.23
ORCHSF	27706	Orchard Street / Selfridges	396	0.25
OXFCOS	829	Old Cavendish Street	594	0.37
	16575	Oxford Circus Station	381	0.24
	7849	Conduit Street / Hamleys Toy Store	358	0.22
PCIRRS	149	Piccadilly Circus	408	0.25
	29867	Haymarket	407	0.25
	BP3509	Trafalgar Square	214	0.13
TFSQCC	BP3505	Trafalgar Square / Charing Cross Stn	212	0.13
	7853	Southampton Street	398	0.25
AWCHWA	20983	Aldwych / Drury Lane	381	0.24
Total Route Mileage - Out Direction			16364	10.17
			16364	10.17

Tranche 423

BACK DIRECTION				
Timing Point Code	Stop Number	Stop Name	Metres	Miles
AWCHSM	34323	Aldwych / Somerset House		
	14627	Savoy Street	314	0.20
	7852	Bedford Street	238	0.15
TFSQCC	35730	Charing Cross Station	207	0.13
	BP3503	Trafalgar Square	366	0.23
	17683	Regent Street / Charles I I Street	333	0.21
PCIRRS	155	Piccadilly Circus	299	0.19
	370	Conduit Street / Hamleys Toy Store	375	0.23
OXFCOS	91511	Oxford Circus	652	0.41
	91530	Selfridges	497	0.31
PTMSOS	34006	Portman Street / Marble Arch Station	391	0.24
	29796	George Street	233	0.14
	29797	Dorset Street	224	0.14
	29799	Marylebone Road	264	0.16
DORSSQ	29803	Dorset Square / Marylebone Station	293	0.18
	1051	Alpha Close	503	0.31
	2738	Park Road / Lord's Cricket Ground	308	0.19
	730	Lords Cricket Ground	240	0.15
	1436	St John's Wood Station	457	0.28
	1026	Queens Grove	409	0.25
	11964	Boundary Road	390	0.24
SCOTSN	12034	Swiss Cottage Stn / Finchley Road	328	0.20
	33966	College Crescent	215	0.13
FNRDSN	BP4548	Finchley Road Station	304	0.19
	16153	Finchley Road / O2 Centre	160	0.10
	1218	Finchley Road & Froggnal Station	312	0.19
	12027	Langland Gardens	208	0.13
	116	West End Lane	191	0.12
	136	Lyncroft Gardens	444	0.28
FNRDPL	1464	Fortune Green Road	321	0.20
	11992	Lyndale Avenue	406	0.25
	4705	Childs Hill / Cricklewood Lane	218	0.14
	6082	Llanvanor Road	326	0.20
	6084	Dunstan Road	281	0.17
	2771	Golders Green / Finchley Road	402	0.25
GGSNFR	2770	Golders Green Station	196	0.12
	2801	Hoop Lane	256	0.16
	6091	Clifton Gardens	513	0.32
	2298	Temple Fortune Lane	403	0.25
	6095	Childs Way	261	0.16
	2767	Henlys Corner / Addison Way	378	0.23
FNCHHC	6096	Henlys Corner	190	0.12
	6098	Allandale Avenue	213	0.13
	6100	Mountfield Road	270	0.17
	2765	East End Road	166	0.10
	2764	Hendon Lane	415	0.26
	2763	Dollis Park	147	0.09
FNCHCS	2761	Finchley Central Station	266	0.17
	2759	Long Lane	391	0.24
	6109	Essex Park	328	0.20
	6113	Granville Road	244	0.15
	6117	Woodberry Grove	350	0.22
NTFYKW	BP4376	North Finchley Bus Station	265	0.16
Total Route Mileage - Back Direction			16361	10.17
			16361	10.17