

7. Service Specification

Route: 25 & N25

Contract Reference: QC68101

This Service Specification forms section 7 of the ITT and should be read in conjunction with the ITT document, Version 1 dated 29 September 2011.

You are formally invited to tender for the provision of the bus service detailed below and in accordance with this Service Specification. Tenderers must ensure that a Compliant Tender is submitted and this will only be considered for evaluation if all parts of the Tender documents, as set out in section 11, have been received by the Corporation by the Date of Tender. The Tender must be fully completed in the required format, in accordance with the Instructions to Tenderers. A Compliant Tender must comply fully with the requirements of the Framework Agreement; adhere to the requirements of the Service Specification; and reflect the price of operating the Services with new vehicles.

Route Number	25 & N25
Terminus Points - Route No. 25	Holborn Circus, High Holborn and Ilford High Road, Hainault Street
Terminus Points - Route No. N25	Oxford Circus, Holles Street, West Side/ Great Titchfield Street/Oxford Circus Station and Ilford High Road, Hainault Street
Contract Basis	Incentivised
Commencement Date	23 rd May 2020
Vehicle Type	87 capacity, dual door, double deck vehicles
Current Maximum Approved Dimensions	10.6 metres long and 2.55 metres wide
New Vehicles Mandatory	Yes
Hybrid Price Required	Yes
Sponsored Route	No
Advertising Rights	Operator
Minimum Performance Standard - Route No. 25	Average Excess Wait Time - No more than 1.30 minutes
Extension Threshold - Route No. 25	Average Excess Wait Time Threshold - 1.20 minutes
Minimum Operated Mileage Standard - Route No. 25	No less than 98%
Average Excess Wait Time - Route No. N25	Average Excess Wait Time - No more than 1.00 minutes
Minimum Operated Mileage Standard - Route No. N25	No less than 99%

The Date of Tender for this ITT is: No later than 12 Noon on Monday 17th June 2019.

Tenderers should refer to section 3 of Part A for the Service Specification Explanatory Notes and Appendix B of section 5 for the Example Service Specification of the ITT document.

SERVICE SPECIFICATION

- 1) SERVICE SPEC - ROUTE SPECIFICATION INFORMATION
- 2) NOTES
- 3) SCHEDULE REQUIREMENTS & PINCHPOINTS
- 4) OPERATIONAL CONSIDERATIONS
- 5) ROUTE RECORD, CURRENT PERFORMANCE, QSI BY TIME OF DAY, IBUS MILEAGE & QSI POINTS

2) NOTES

Proposed Changes:

At this time, the Corporation expects to implement a change to the existing service prior to the commencement of the new Route Agreement for Route Nos. 25 & N25.

- Ex Ilford High Road, Hainault Street, Route No. N25 is cutback to Oxford Street. The section of routeing between Oxford Street and Holles Street is withdrawn.
- **Please see Section 5 for a full list of streets traversed and standing arrangements.**

Tenderers should note that the following alterations (subject to consultation) are proposed as part of this Service Specification for introduction with the new Route Agreement:

- Departures on Route No. N25 are re-timed to better interwork with Route No. 25.
- **Tenderers must identify the cost of the Nightly element of this service separately.**

The Ultra Low Emission Zone (ULEZ) in Central London will commence on 8th April 2019, applying 24 hours a day, 7 days a week. All double deck buses operating for TfL within the zone must be hybrid (meeting Euro VI emissions standards) or zero emission.

Operators should provide the following prices:

- 1. Annual diesel-electric hybrid price - based on minimum 5 year contract.**

Tenderers are encouraged to offer alternative vehicle options in accordance with Part 9 of their tender, including but not limited to:

- 1. Vehicles that offer genuine increased capacity and are certified as such.**
- 2. Modifications to reduce emissions and fuel consumption (including energy storage, engine stop/start, extended zero-emission range and/or energy efficient components)**
- 3. Existing vehicles. Separate costs must be provided both excluding and including the cost of upgrading to Euro VI standards. The inclusive costs should be on a per bus per annum basis. Please note that existing diesel vehicles will NOT be considered for routes which are already operated by hybrids.**

Full iBus Monitoring was introduced on all night routes with effect from 1 April 2014.

Tenderers are therefore advised that on contracts where there is a night service both the day and night elements will be incentivised from the commencement of the Route Agreement in accordance with clause 46 of Annex B Terms and Conditions, using the Minimum Performance Standard(s) specified in Part 1 of the ITT.

3) SCHEDULE REQUIREMENTS & PINCHPOINTS

3.1) MONDAY TO FRIDAY SCHEDULE REQUIREMENTS & PINCHPOINTS

Holborn Circus, High Holborn to Ilford High Road, Hainault Street			Ilford High Road, Hainault Street to Holborn Circus, High Holborn		
First departure no later than 0515.			First departure no later than 0410.		
0510 - 0555	Every 10 minutes		0405 - 0450	Every 10 minutes	
0556 - 1640	Every 7-8 minutes (8 buses per hour)		0451 - 1935	Every 7-8 minutes (8 buses per hour)	
1641 - 1810*	Every 6 minutes		1936 - 0010	Every 10 minutes	
1811 - 2040	Every 7-8 minutes (8 buses per hour)				
2041 - 0035	Every 10 minutes				
Last departure no earlier than 0030.			Last departure no earlier than 0005.		
Pinchpoints					
Stratford Bus Station	0700 - 0900	8 minutes	Aldgate Station	0705 - 0905	8 minutes
	1510 - 1640	8 minutes		1505 - 1635	8 minutes
	1741 - 1910	6 minutes			

3.2) SATURDAY AND GOOD FRIDAY SCHEDULE REQUIREMENTS & PINCHPOINTS

Holborn Circus, High Holborn to Ilford High Road, Hainault Street			Ilford High Road, Hainault Street to Holborn Circus, High Holborn		
First departure no later than 0515.			First departure no later than 0410.		
0510 - 0625	Every 10 minutes		0405 - 0520	Every 10 minutes	
0626 - 2040	Every 7-8 minutes (8 buses per hour)		0521 - 1935	Every 7-8 minutes (8 buses per hour)	
2041 - 0035	Every 10 minutes		1936 - 0010	Every 10 minutes	
Last departure no earlier than 0030.			Last departure no earlier than 0005.		
Pinchpoints					
Stratford Bus Station	0905 - 1105	8 minutes	Aldgate Station	0900 - 1100	8 minutes

3) SCHEDULE REQUIREMENTS & PINCHPOINTS - continued

3.3) SUNDAY AND PUBLIC HOLIDAYS (EXCEPT GOOD FRIDAY AND CHRISTMAS DAY) SCHEDULE REQUIREMENTS & PINCHPOINTS

Holborn Circus, High Holborn to Ilford High Road, Hainault Street		Ilford High Road, Hainault Street to Holborn Circus, High Holborn			
First departure no later than 0515.		First departure no later than 0410.			
0510 - 0830	Every 12 minutes	0405 - 0825	Every 12 minutes		
0831 - 0035	Every 10 minutes	0826 - 0010	Every 10 minutes		
Last departure no earlier than 0030.		Last departure no earlier than 0005.			
Pinchpoints					
Stratford Bus Station	1005 - 1135	10 minutes	Aldgate Station	1005 - 1135	10 minutes

Tenderers must identify the cost of the Boxing Day element of this service separately.

3.4) SUNDAY NIGHTS/MONDAY MORNINGS TO THURSDAY NIGHTS/FRIDAY MORNINGS

Oxford Circus, Holles Street, West Side to Ilford High Road, Hainault Street		Ilford High Road, Hainault Street to Great Titchfield Street/Oxford Circus Station			
First departure no later than 0020.		First departure no later than 0015.			
0015 - 0455	Every 8 minutes	0010 - 0405	Every 8 minutes		
Last departure no earlier than 0450.		Last departure no earlier than 0400.			

Tenderers must identify the cost of the Nightly element of this service separately.

3.5) FRIDAY NIGHTS/SATURDAY MORNINGS TO SATURDAY NIGHTS/SUNDAY MORNINGS

Oxford Circus, Holles Street, West Side to Ilford High Road, Hainault Street		Ilford High Road, Hainault Street to Great Titchfield Street/Oxford Circus Station			
First departure no later than 0025.		First departure no later than 0015.			
0020 - 0455	Every 12 minutes	0010 - 0410	Every 12 minutes		
Last departure no earlier than 0450.		Last departure no earlier than 0405.			

Tenderers must identify the cost of the Nightly element of this service separately.

4) OPERATIONAL CONSIDERATIONS

- 4.1) Route No. 25 should interwork with Route No. N25 between Holborn Circus, High Holborn and Ilford High Road, Hainault Street to form a seamless 24 hour service.
- 4.2) Route Nos. 25 & N25 can suffer from unpredictable traffic delays in the City of London, Bow and Stratford areas.
- 4.3) Football matches at West Ham United Football Club at Queen Elizabeth Olympic Park can cause traffic congestion in the Stratford area.
- 4.4) On Route No. N25, ex Oxford Circus, Holles Street, West Side, between midnight and 4am, buses are re-routed from Cavendish Place via Regent Street to Oxford Street to re-join line of routeing. There is no change to stops and Tenderers should assume the same mileage.
- 4.5) Stratford City is a mixed-use development located on former rail lands in East London. The site is intersected by High Speed 1 and is being developed as two parcels of land linked by a number of bridges. Developments include a large residential area, Europe's largest single retail development, an area for commercial offices and numerous hotels, community facilities and open spaces. Legacy development is projected to come forward over the next 10 years. As a result, demand may increase on Route Nos. 25 & N25 as new developments are built and occupied.
- 4.6) London Underground (LUL) has introduced 'NightTube'; the continuous operation of LU services from first train on Friday morning to last train on Sunday night i.e. for 67 hours over the weekend. Bus demand will continue to be monitored and operators will be kept up to date about the impact of 'NightTube'.
- 4.7) The central section of the Elizabeth line between Paddington and Abbey Wood is expected to open initially and 3 separate services will operate from Paddington to Abbey Wood, from Paddington to Heathrow and from Liverpool Street to Shenfield. The full Elizabeth line service will operate from Reading and Heathrow to Shenfield and Abbey Wood and is expected to commence as soon after the central tunnels open as possible. There is potential for a change in passenger demand once the line becomes fully operational. A review, post opening of the Elizabeth line, will be undertaken if required.

**5) ROUTE RECORD, CURRENT PERFORMANCE, QSI BY TIME OF DAY,
IBUS MILEAGE & QSI POINTS**

5.1) ROUTE RECORD
As per Busnet printout.

5.2) CURRENT PERFORMANCE
As per current print out.

5.3) QSI BY TIME OF DAY
As per current print out.

5.4) IBUS MILEAGE & QSI POINTS
As per current print out.

LONDON BUSES - ROUTE DESCRIPTION

ROUTE 25: Holborn Circus - Ilford High Road, Hainault Street

Date of Structural Change: 4 July 2020.

Date of Service Change: 4 July 2020.

Reason for Issue: New Tender.

STREETS TRAVERSED

Towards Ilford High Road, Hainault Street: Holborn Viaduct, Newgate Street, King Edward Street, Angel Street, St Martin's Le Grand, Cheapside, Poultry, Mansion House Street, Cornhill, Leadenhall Street, Aldgate, Aldgate High Street, Whitechapel High Street, Whitechapel Road, Mile End Road, Bow Road, Bow Interchange, Stratford High Street, Great Eastern Road, Station Street, Stratford Bus Station, Great Eastern Road, Stratford Broadway, Romford Road, Ilford Hill, Chapel Road, Winston Way, Handforth Road, Clements Road, Ilford High Road.

Towards Holborn Circus: Ilford High Road, Clements Road, Ilford High Road, Chapel Road, Ilford Hill, Romford Road, Stratford Broadway, Great Eastern Road, Station Street, Stratford Bus Station, Great Eastern Road, Stratford High Street, Bow Interchange, Bow Road, Mile End Road, Whitechapel Road, Whitechapel High Street, Aldgate High Street, Aldgate, Leadenhall Street, Cornhill, Mansion House Street, Poultry, Cheapside, Newgate Street, Holborn Viaduct.

AUTHORISED STANDS, CURTAILMENT POINTS, & BLIND DESCRIPTIONS

Please note that only stands, curtailment points, & blind descriptions as detailed in this contractual document may be used.

HOLBORN CIRCUS, CHARTERHOUSE STREET [SOUTH SIDE]

Public stand for four buses on south side of Charterhouse Street commencing 8 metres east of Ely Place and extending 44 metres east.

Buses proceed from Holborn Viaduct via Snow Hill, West Smithfield, Farringdon Street and Charterhouse Street to stand, departing via Charterhouse Street and Holborn Circus to Holborn Viaduct. Set down in Holborn Viaduct (BP5775 - City Thameslink Station #, Last Stop on LOR: BP5775 - City Thameslink Station #) and pick up in Holborn Viaduct, at Stop K (2018 - Holborn Circus, First Stop on LOR: 2018 - Holborn Circus).

AVAILABILITY:	At any time.
OPERATING RESTRICTIONS:	No more than 2 buses on Route 25 should be scheduled to stand at any one time.
MEAL RELIEFS:	No meal relief vehicles to stand at any time.
FERRY VEHICLES:	No ferry vehicles to park on stand at any time.
BLIND DISPLAY:	City Thameslink.

ST. PAUL'S STATION, KING EDWARD STREET

Public stand for four buses on west side of King Edward Street, commencing 45 metres north of northern kerb line of Angel Street and extending 45 metres south.

From Holborn Circus.

Buses proceed from Newgate Street via King Edward Street to stand, departing via King Edward Street, Little Britain, Montague Street, Museum Of London Roundabout, St Martin's Le Grand and Newgate Street to Holborn Viaduct. Set down in Newgate Street, at Stop ST (8586 - King Edward Street, Last Stop on LOR: 8586 - King Edward Street) and pick up in Holborn Viaduct, at Stop HK (1156 - City Thameslink Station #, First Stop on LOR: BP5775 - City Thameslink Station #).

From Ilford High Road, Hainault Street.

Buses proceed from Cheapside via Newgate Street and King Edward Street to stand, departing via King Edward Street, Little Britain, Montague Street, Museum Of London Roundabout and St Martin's Le Grand to Cheapside. Set down in Cheapside, at Stop SN (8556 - Bread Street, Last Stop on LOR: 8556 - Bread Street) and pick up in Cheapside, at Stop SY (BP5575 - St Paul's Station <>, First Stop on LOR: BP5575 - St Paul's Station <>).

AVAILABILITY:	At any time.
OPERATING RESTRICTIONS:	Unscheduled curtailments only
MEAL RELIEFS:	No meal relief vehicles to stand at any time.
FERRY VEHICLES:	No ferry vehicles to park on stand at any time.
BLIND DISPLAY:	St. Paul's.

MANSION HOUSE STATION [NORTH SIDE] (from ILFORD HIGH ROAD, HAINAULT STREET)

Public stand for two buses on north side of Queen Victoria Street, commencing 29 metres east of kerb line of Bread Street extending 25 metres west.

Buses proceed from Cornhill via Mansion House Street and Queen Victoria Street to stand, departing via Queen Victoria Street, Friday Street, Cannon Street, Queen Victoria Street and Mansion House Street to Cornhill. Set down in Cornhill, at Stop E (8559 - Bank Station <> / Cornhill, Last Stop on LOR: 8559 - Bank Station <> / Cornhill) and pick up in Cornhill, at Stop D (8558 - Bank Station <> / Cornhill, First Stop on LOR: 8558 - Bank Station <> / Cornhill).

AVAILABILITY: At any time.
OPERATING RESTRICTIONS: Unscheduled curtailments only
MEAL RELIEFS: No meal relief vehicles to stand at any time.
FERRY VEHICLES: No ferry vehicles to park on stand at any time.
BLIND DISPLAY: Bank.

ALDGATE BUS STATION (from ILFORD HIGH ROAD, HAINAULT STREET)

Private stand for 16 buses in marked bays in Aldgate Bus Station on south side of Aldgate High Street.

Buses proceed from Aldgate High Street via Minories and Aldgate Bus Station to stand, departing via Aldgate Bus Station to Aldgate High Street. Set down in Aldgate High Street, at Stop R (33683 - Aldgate Station <>, Last Stop on LOR: 33683 - Aldgate Station <>) and pick up in Aldgate High Street, at Stop D (BP5998 - Aldgate Station <>, First Stop on LOR: BP5998 - Aldgate Station <>).

AVAILABILITY: At any time.
OPERATING RESTRICTIONS: Unscheduled curtailments only
MEAL RELIEFS: No meal relief vehicles to stand at any time.
FERRY VEHICLES: No ferry vehicles to park on stand at any time.
BLIND DISPLAY: Aldgate.

MILE END STATION, GROVE ROAD

Private stand for six buses in bus station on west side of Grove Road, commencing 55 metres north of Mile End Road and extending 30 metres on offside and 30 metres on nearside.

From Holborn Circus.

Buses proceed from Mile End Road via Grove Road and Mile End Bus Station to stand, departing via Mile End Bus Station, Grove Road and Burdett Road to Mile End Road. Set down in Mile End Road, at Stop E (4825 - Regents Canal, Last Stop on LOR: 4825 - Regents Canal) and pick up in Mile End Road, at Stop F (BP2895 - Regents Canal, First Stop on LOR: BP2895 - Regents Canal).

From Ilford High Road, Hainault Street.

Buses proceed from Mile End Road via Grove Road and Mile End Bus Station to stand, departing via Mile End Bus Station and Grove Road to Mile End Road. Set down in Mile End Road, at Stop C (4826 - Mile End Station <>, Last Stop on LOR: 4826 - Mile End Station <>) and pick up in Mile End Road, at Stop D (20674 - Mile End Station <>, First Stop on LOR: 20674 - Mile End Station <>).

AVAILABILITY:	At any time.
OPERATING RESTRICTIONS:	Unscheduled curtailments only.
MEAL RELIEFS:	No meal relief vehicles to stand at any time.
FERRY VEHICLES:	No ferry vehicles to park on stand at any time.
BLIND DISPLAY:	Mile End.

BOW CHURCH (from Holborn Circus)

Buses proceed from Bow Road via Bow Interchange departing to Bow Road. Set down in Bow Road, at stop M (348 - Bow Church, Last Stop on LOR: 348 - Bow Church) and pick up in Bow Road, at stop K (29981 - Bow Church, First Stop on LOR: 2062 - Bow Church).

AVAILABILITY:	At any time.
OPERATING RESTRICTIONS:	Turning Point Only - Buses must not stand
BLIND DISPLAY:	Bow Church.

BOW CHURCH, SOUTH SIDE

Buses proceed out of service from Bow Road. Set down in Bow Road, at stop K (29981 - Bow Church, Last Stop on LOR: 2062 - Bow Church).

AVAILABILITY:	At any time.
OPERATING RESTRICTIONS:	Unscheduled curtailments only
BLIND DISPLAY:	Bow Church.

STRATFORD BUS STATION

Private stand for up to 14 buses facing north in Stratford Bus Station on west side of Great Eastern Road.

From Holborn Circus.

Buses proceed from Station Street via Stratford Bus Station and Stratford Bus Station to stand, departing via Stratford Bus Station, Stratford Bus Station, Great Eastern Road and The Grove to Stratford Broadway. Set down in Station Street, at alighting point AP1 (BP1030 - Stratford Bus Station <> # [dlr], Last Stop on LOR: BP5307 - Stratford Bus Station <> # [dlr]) and pick up in Stratford Broadway, at stop E (8019 - Stratford Centre, First Stop on LOR: 8019 - Stratford Centre).

From Ilford High Road, Hainault Street.

Buses proceed from Stratford Broadway via Great Eastern Road, Station Street, Stratford Bus Station and Stratford Bus Station to stand, departing via Stratford Bus Station to Stratford Bus Station. Set down in Stratford Broadway, at stop E (8019 - Stratford Centre, Last Stop on LOR: 8019 - Stratford Centre) and pick up in Stratford Bus Station, at stop B (BP976 - Stratford Bus Station <>#[dlr], First Stop on LOR: BP976 - Stratford Bus Station <>#[dlr]).

AVAILABILITY:	At any time.
OPERATING RESTRICTIONS:	Unscheduled curtailments only.
MEAL RELIEFS:	No meal relief vehicles to stand at any time.
FERRY VEHICLES:	No ferry vehicles to park on stand at any time.
BLIND DISPLAY:	Stratford.

FOREST GATE, GREEN STREET, FINDEN ROAD (from Holborn Circus)

Public stand for two buses on south side of Finden Road, commencing 12 metres east of centre of Green Street and extending 19 metres east.

Buses proceed from Romford Road via Ratcliff Road and Finden Road to stand, departing via Finden Road and Green Street to Romford Road. Set down in Romford Road, at Stop P (9045 - Green Street, Last Stop on LOR: 9045 - Green Street) and pick up in Romford Road, at Stop Q (14581 - Green Street, First Stop on LOR: 14581 - Green Street).

AVAILABILITY:	At any time.
OPERATING RESTRICTIONS:	Unscheduled curtailments only
MEAL RELIEFS:	No meal relief vehicles to stand at any time.
FERRY VEHICLES:	No ferry vehicles to park on stand at any time.
BLIND DISPLAY:	Forest Gate, Police Station.

MANOR PARK STATION, GLADDING ROAD (from Holborn Circus)

Public stand for two buses on west side of Gladding Road, commencing 18 metres south of centre of Capel Road and extending 24 metres south.

Buses proceed from Romford Road via Station Road, Whitta Road and Gladding Road to stand, departing via Gladding Road, Capel Road, Forest Drive and Station Road to Romford Road. Set down in Romford Road, at Stop E (4644 - High Street North, Last Stop on LOR: 4644 - High Street North) and pick up in Romford Road, at Stop G (14523 - Woodgrange Park Station #, First Stop on LOR: 14523 - Woodgrange Park Station #).

AVAILABILITY: At any time.
OPERATING RESTRICTIONS: Unscheduled curtailments only.
MEAL RELIEFS: No meal relief vehicles to stand at any time.
FERRY VEHICLES: No ferry vehicles to park on stand at any time.
BLIND DISPLAY: Manor Park.

ILFORD, RODEN STREET (from Holborn Circus)

Private stand for five buses in bus parking area at junction of Chapel Road and Roden Street in 2 sections.

1. For four buses on the offside, extending 45 metres;
2. For one bus on nearside, extending 12 metres.

Buses proceed from Ilford Hill via Chapel Road and Sainsburys Bus Lay-By to stand, departing via Sainsburys Bus Lay-By and Roden Street to Chapel Road. Set down in Ilford Hill, at Stop E (R0757 - Ilford Hill, Last Stop on LOR: R0757 - Ilford Hill) and pick up in Chapel Road, at Stop Y (BP1379 - Chapel Road, First Stop on LOR: BP1379 - Chapel Road).

AVAILABILITY: At any time.
OPERATING RESTRICTIONS: Unscheduled curtailments only.
MEAL RELIEFS: No meal relief vehicles to stand at any time.
FERRY VEHICLES: No ferry vehicles to park on stand at any time.
BLIND DISPLAY: Ilford Broadway.

ILFORD, HAINAULT STREET

Private stand for 17 buses standing abreast in marked bays in Bus Parking Area on east side of Hainault Street, with the first 4 bays (nearest entrance) restricted to midi-buses. Buses proceed from Ilford High Road via Hainault Street and Ilford Bus Station to stand, departing via Ilford Bus Station, Ley Street and Hainault Street to Ilford High Road. Set down in Ilford High Road, at Stop W (R0868 - Hainault Street, Last Stop on LOR: R0868 - Hainault Street) and pick up in Ilford High Road, at Stop V (FC41 - Hainault Street, First Stop on LOR: FC41 - Hainault Street).

AVAILABILITY:	At any time.
OPERATING RESTRICTIONS:	No more than 4 buses on Route 25 should be scheduled to stand at any one time.
MEAL RELIEFS:	No meal relief vehicles to stand at any time.
FERRY VEHICLES:	No ferry vehicles to park on stand at any time.
BLIND DISPLAY:	Ilford.

LONDON BUSES - ROUTE DESCRIPTION

ROUTE N25: Oxford Circus, Holles Street - Ilford High Road, Hainault Street

Date of Structural Change: 4 July 2020.

Date of Service Change: 4 July 2020.

Reason for Issue: New Tender.

STREETS TRAVERSED

Towards Ilford High Road, Hainault Street: Holles Street, Cavendish Square, Cavendish Place, Mortimer Street, Great Portland Street, Oxford Street, New Oxford Street, Bloomsbury Way, Vernon Place, Theobald's Road, Drake Street, Procter Street, High Holborn, Holborn, Holborn Circus, Holborn Viaduct, Newgate Street, King Edward Street, Angel Street, St Martin's Le Grand, Cheapside, Poultry, Mansion House Street, Cornhill, Leadenhall Street, Aldgate, Aldgate High Street, Whitechapel High Street, Whitechapel Road, Mile End Road, Bow Road, Bow Interchange, Stratford High Street, Great Eastern Road, Station Street, Stratford Bus Station, Great Eastern Road, Stratford Broadway, Romford Road, Ilford Hill, Chapel Road, Winston Way, Handforth Road, Clements Road, Ilford High Road.

Special Journey towards Ilford High Road, Hainault Street between Cavendish Place and Oxford Street:

Between midnight and 4am buses operate from Cavendish Place, then via Regent Street rejoining line of route at Oxford Street.

Towards Oxford Circus, Holles Street: Ilford High Road, Clements Road, Ilford High Road, Chapel Road, Ilford Hill, Romford Road, Stratford Broadway, Great Eastern Road, Station Street, Stratford Bus Station, Great Eastern Road, Stratford High Street, Bow Interchange, Bow Road, Mile End Road, Whitechapel Road, Whitechapel High Street, Aldgate High Street, Aldgate, Leadenhall Street, Cornhill, Mansion House Street, Poultry, Cheapside, Newgate Street, Holborn Viaduct, Holborn Circus, Holborn, High Holborn, New Oxford Street, Oxford Street.

AUTHORISED STANDS, CURTAILMENT POINTS, & BLIND DESCRIPTIONS

Please note that only stands, curtailment points, & blind descriptions as detailed in this contractual document may be used.

OXFORD CIRCUS, HOLLES STREET, WEST SIDE

Public stand for 6 buses on west side of Holles Street commencing 14 metres south of Cavendish Square and extending 76 metres south.

Buses proceed from Oxford Street via Regent Street, Hanover Street, Hanover Square, Harewood Place and Holles Street to stand, departing to Holles Street. Set down in Oxford Street, at Stop OP (33924 - Great Titchfield St / Oxford Circus Stn <>) and pick up in Holles Street, at stop OG (34846 - Holles Street).

AVAILABILITY:	At any time.
OPERATING RESTRICTIONS:	No more than 2 buses on Route 25 should be scheduled to stand at any one time.
MEAL RELIEFS:	No meal relief vehicles to stand at any time.
FERRY VEHICLES:	No ferry vehicles to park on stand at any time.
BLIND DISPLAY:	Oxford Circus.

TOTTENHAM COURT ROAD STN, ST GILES HIGH STREET NORTH (from ILFORD HIGH ROAD, HAINAULT STREET)

Buses proceed from High Holborn via New Oxford Street, Shaftesbury Avenue, High Holborn and St Giles High Street departing to New Oxford Street. Set down in High Holborn, at stop Q (20394 - High Holborn and pick up in New Oxford Street, at stop Z (14456 - New Oxford Street).

AVAILABILITY:	At any time.
OPERATING RESTRICTIONS:	Turning Point Only - Buses must not stand
BLIND DISPLAY:	Holborn.

HOLBORN, PROCTER STREET [WEST SIDE] (from ILFORD HIGH ROAD, HAINAULT STREET)

Public stand for three buses on west side (offside) of Procter Street commencing 2 metres north of Fisher Street. extending 39 metres north.

Buses proceed from High Holborn via Southampton Row, Vernon Place, Theobald's Road, Drake Street and Procter Street to stand, departing to Procter Street. Set down in High Holborn, at stop K (1057 - Holborn Station <>) and pick up in Procter Street, at stop H (33107 - Procter Street).

AVAILABILITY:	At any time.
OPERATING RESTRICTIONS:	Unscheduled curtailments only
MEAL RELIEFS:	No meal relief vehicles to stand at any time.
FERRY VEHICLES:	No ferry vehicles to park on stand at any time.
BLIND DISPLAY:	Holborn.

HOLBORN CIRCUS, CHARTERHOUSE STREET [SOUTH SIDE] (from ILFORD HIGH ROAD, HAINAULT STREET)

Public stand for four buses on south side of Charterhouse Street commencing 8 metres east of Ely Place and extending 44 metres east.

Buses proceed from Holborn Viaduct via Snow Hill, West Smithfield, Farringdon Street and Charterhouse Street to stand, departing via Charterhouse Street and Holborn Circus to Holborn Viaduct. Set down in Holborn Viaduct, at Stop HK (1156 - City Thameslink Station # and pick up in Holborn Viaduct, at Stop K (2018 - Holborn Circus.

AVAILABILITY:	At any time.
OPERATING RESTRICTIONS:	Unscheduled curtailments only.
MEAL RELIEFS:	No meal relief vehicles to stand at any time.
FERRY VEHICLES:	No ferry vehicles to park on stand at any time.
BLIND DISPLAY:	City Thameslink.

ST. PAUL'S STATION, KING EDWARD STREET

Public stand for four buses on west side of King Edward Street, commencing 45 metres north of northern kerb line of Angel Street and extending 45 metres south.

From Ilford High Road, Hainault Street.

Buses proceed from Cheapside via Newgate Street and King Edward Street to stand, departing via King Edward Street, Little Britain, Montague Street, Museum Of London Roundabout and St Martin's Le Grand to Cheapside. Set down in Cheapside, at Stop SN (8556 - Bread Street and pick up in Cheapside, at Stop SY (BP5575 - St Paul's Station <>.

From Oxford Circus, Holles Street.

Buses proceed from Newgate Street via King Edward Street to stand, departing via King Edward Street, Little Britain, Montague Street, Museum Of London Roundabout, St Martin's Le Grand and Newgate Street to Holborn Viaduct. Set down in Newgate Street, at Stop ST (8586 - King Edward Street and pick up in Holborn Viaduct, at Stop HK (1156 - City Thameslink Station #.

AVAILABILITY:	At any time.
OPERATING RESTRICTIONS:	Unscheduled curtailments only
MEAL RELIEFS:	No meal relief vehicles to stand at any time.
FERRY VEHICLES:	No ferry vehicles to park on stand at any time.
BLIND DISPLAY:	St. Paul's.

MANSION HOUSE STATION [NORTH SIDE] (from ILFORD HIGH ROAD, HAINAULT STREET)

Public stand for two buses on north side of Queen Victoria Street, commencing 29 metres east of kerb line of Bread Street extending 25 metres west.

Buses proceed from Cornhill via Mansion House Street and Queen Victoria Street to stand, departing via Queen Victoria Street, Friday Street, Cannon Street, Queen Victoria Street and Mansion House Street to Cornhill. Set down in Cornhill, at Stop E (8559 - Bank Station <> / Cornhill and pick up in Cornhill, at Stop D (8558 - Bank Station <> / Cornhill.

AVAILABILITY: At any time.
OPERATING RESTRICTIONS: Unscheduled curtailments only
MEAL RELIEFS: No meal relief vehicles to stand at any time.
FERRY VEHICLES: No ferry vehicles to park on stand at any time.
BLIND DISPLAY: Bank.

ALDGATE BUS STATION (from ILFORD HIGH ROAD, HAINAULT STREET)

Private stand for 16 buses in marked bays in Aldgate Bus Station on south side of Aldgate High Street.

Buses proceed from Aldgate High Street via Minories and Aldgate Bus Station to stand, departing via Aldgate Bus Station to Aldgate High Street. Set down in Aldgate High Street, at Stop R (33683 - Aldgate Station <> and pick up in Aldgate High Street, at Stop D (BP5998 - Aldgate Station <>).

AVAILABILITY: At any time.
OPERATING RESTRICTIONS: Unscheduled curtailments only
MEAL RELIEFS: No meal relief vehicles to stand at any time.
FERRY VEHICLES: No ferry vehicles to park on stand at any time.
BLIND DISPLAY: Aldgate.

MILE END STATION, GROVE ROAD

Private stand for six buses in bus station on west side of Grove Road, commencing 55 metres north of Mile End Road and extending 30 metres on offside and 30 metres on nearside.

From Ilford High Road, Hainault Street.

Buses proceed from Mile End Road via Grove Road and Mile End Bus Station to stand, departing via Mile End Bus Station and Grove Road to Mile End Road. Set down in Mile End Road, at Stop C (4826 - Mile End Station <>) and pick up in Mile End Road, at Stop D (20674 - Mile End Station <>).

From Oxford Circus, Holles Street.

Buses proceed from Mile End Road via Grove Road and Mile End Bus Station to stand, departing via Mile End Bus Station, Grove Road and Burdett Road to Mile End Road. Set down in Mile End Road, at Stop E (4825 - Regents Canal and pick up in Mile End Road, at Stop F (BP2895 - Regents Canal).

AVAILABILITY:	At any time.
OPERATING RESTRICTIONS:	Unscheduled curtailments only.
MEAL RELIEFS:	No meal relief vehicles to stand at any time.
FERRY VEHICLES:	No ferry vehicles to park on stand at any time.
BLIND DISPLAY:	Mile End.

BOW CHURCH (from Oxford Circus, Holles Street)

Buses proceed from Bow Road via Bow Interchange departing to Bow Road. Set down in Bow Road, at stop M (348 - Bow Church and pick up in Bow Road, at stop K (29981 - Bow Church).

AVAILABILITY:	At any time.
OPERATING RESTRICTIONS:	Turning Point Only - Buses must not stand
BLIND DISPLAY:	Bow Church.

BOW CHURCH, SOUTH SIDE

Buses proceed out of service from Bow Road. Set down in Bow Road, at stop K (29981 - Bow Church).

AVAILABILITY:	At any time.
OPERATING RESTRICTIONS:	Unscheduled curtailments only
BLIND DISPLAY:	Bow Church.

STRATFORD BUS STATION

Private stand for up to 14 buses facing north in Stratford Bus Station on west side of Great Eastern Road.

From Ilford High Road, Hainault Street.

Buses proceed from Stratford Broadway via Great Eastern Road, Station Street, Stratford Bus Station and Stratford Bus Station to stand, departing via Stratford Bus Station to Stratford Bus Station. Set down in Stratford Broadway, at stop E (8019 - Stratford Centre and pick up in Stratford Bus Station, at stop B (BP976 - Stratford Bus Station <>#[dlr].

From Oxford Circus, Holles Street.

Buses proceed from Stratford Bus Station via Stratford Bus Station to stand, departing via Stratford Bus Station, Stratford Bus Station and Stratford Bus Station to Stratford Bus Station. Set down in Station Street, at Stop AP (BP5307 - Stratford Bus Station <> # [dlr] and pick up in Stratford Bus Station, at stop B (BP976 - Stratford Bus Station <>#[dlr].

AVAILABILITY:	At any time.
OPERATING RESTRICTIONS:	Unscheduled curtailments only.
MEAL RELIEFS:	No meal relief vehicles to stand at any time.
FERRY VEHICLES:	No ferry vehicles to park on stand at any time.
BLIND DISPLAY:	Stratford.

FOREST GATE, GREEN STREET, FINDEN ROAD (from Oxford Circus, Holles Street)

Public stand for two buses on south side of Finden Road, commencing 12 metres east of centre of Green Street and extending 19 metres east.

Buses proceed from Romford Road via Ratcliff Road and Finden Road to stand, departing via Finden Road and Green Street to Romford Road. Set down in Romford Road, at Stop P (9045 - Green Street and pick up in Romford Road, at Stop Q (14581 - Green Street.

AVAILABILITY:	At any time.
OPERATING RESTRICTIONS:	Unscheduled curtailments only
MEAL RELIEFS:	No meal relief vehicles to stand at any time.
FERRY VEHICLES:	No ferry vehicles to park on stand at any time.
BLIND DISPLAY:	Forest Gate, Police Station.

MANOR PARK STATION, GLADDING ROAD (from Oxford Circus, Holles Street)

Public stand for two buses on west side of Gladding Road, commencing 18 metres south of centre of Capel Road and extending 24 metres south.

Buses proceed from Romford Road via Station Road, Whitta Road and Gladding Road to stand, departing via Gladding Road, Capel Road, Forest Drive and Station Road to Romford Road. Set down in Romford Road, at Stop E (4644 - High Street North and pick up in Romford Road, at Stop G (14523 - Woodgrange Park Station #.

AVAILABILITY:	At any time.
OPERATING RESTRICTIONS:	Unscheduled curtailments only.
MEAL RELIEFS:	No meal relief vehicles to stand at any time.
FERRY VEHICLES:	No ferry vehicles to park on stand at any time.
BLIND DISPLAY:	Manor Park.

ILFORD, RODEN STREET (from Oxford Circus, Holles Street)

Private stand for five buses in bus parking area at junction of Chapel Road and Roden Street in 2 sections.

1. For four buses on the offside, extending 45 metres;
2. For one bus on nearside, extending 12 metres.

Buses proceed from Ilford Hill via Chapel Road and Sainsburys Bus Lay-By to stand, departing via Sainsburys Bus Lay-By and Roden Street to Chapel Road. Set down in Ilford Hill, at Stop E (R0757 - Ilford Hill and pick up in Chapel Road, at Stop Y (BP1379 - Chapel Road.

AVAILABILITY:	At any time.
OPERATING RESTRICTIONS:	Unscheduled curtailments only.
MEAL RELIEFS:	No meal relief vehicles to stand at any time.
FERRY VEHICLES:	No ferry vehicles to park on stand at any time.
BLIND DISPLAY:	Ilford Broadway.

ILFORD, HAINAULT STREET

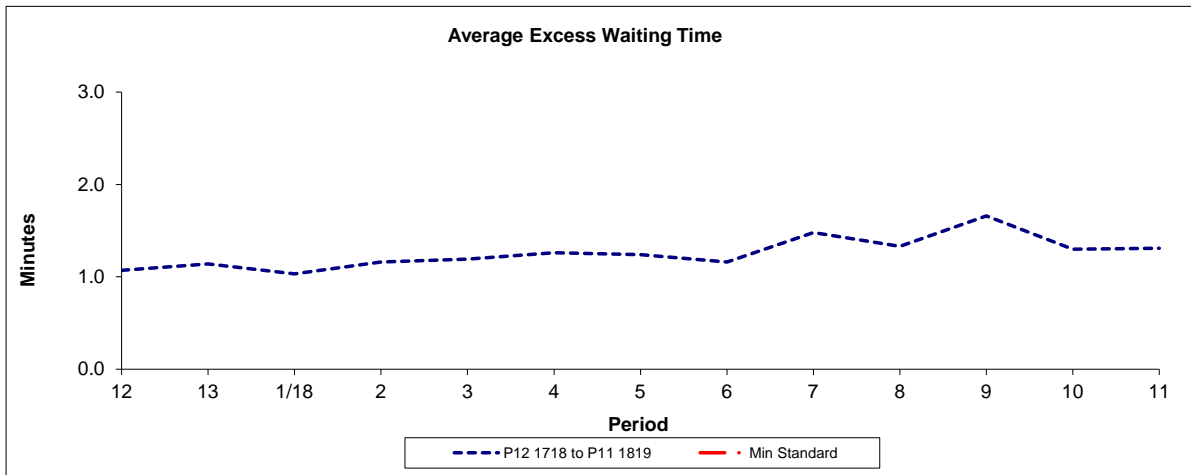
Private stand for 17 buses standing abreast in marked bays in Bus Parking Area on east side of Hainault Street, with the first 4 bays (nearest entrance) restricted to midi-buses.

Buses proceed from Ilford High Road via Hainault Street and Ilford Bus Station to stand, departing via Ilford Bus Station, Ley Street and Hainault Street to Ilford High Road. Set down in Ilford High Road, at Stop W (R0868 - Hainault Street and pick up in Ilford High Road, at Stop V (FC41 - Hainault Street.

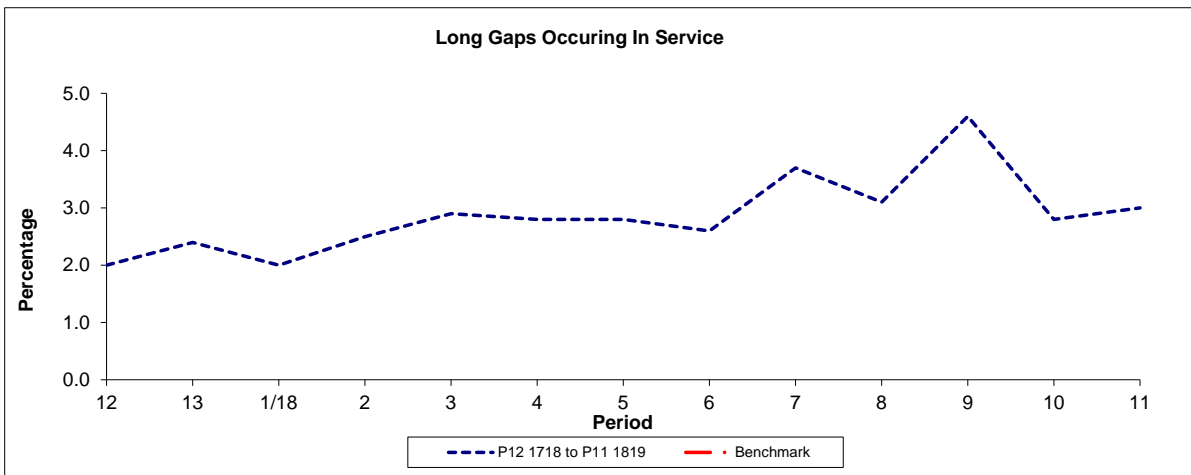
AVAILABILITY:	At any time.
OPERATING RESTRICTIONS:	No more than 4 buses on Route 25 should be scheduled to stand at any one time.
MEAL RELIEFS:	No meal relief vehicles to stand at any time.
FERRY VEHICLES:	No ferry vehicles to park on stand at any time.
BLIND DISPLAY:	Ilford.

PART B - PERFORMANCE STATISTICS

Route 25



Period	12	13	1/18	2	3	4	5	6	7	8	9	10	11
P12 1718 to P11 1819	1.07	1.14	1.03	1.16	1.19	1.26	1.24	1.16	1.48	1.33	1.66	1.30	1.31
Min Standard													



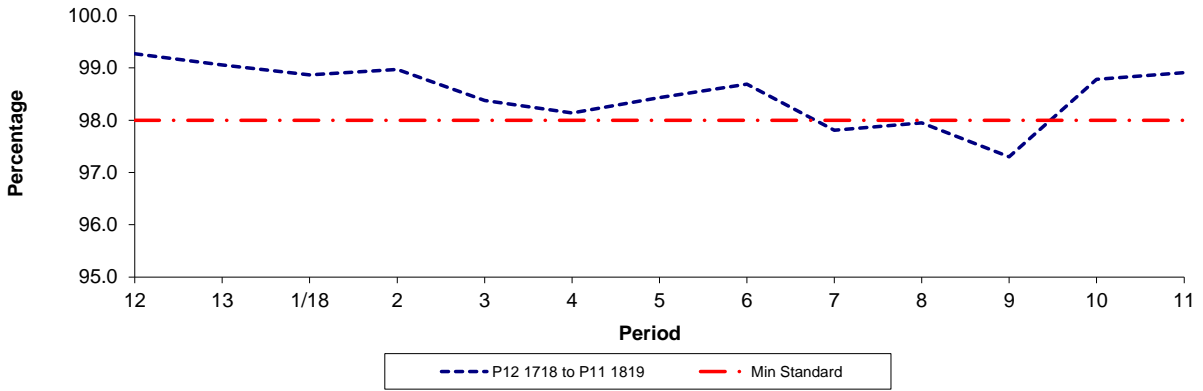
Period	12	13	1/18	2	3	4	5	6	7	8	9	10	11
P12 1718 to P11 1819	2.0	2.4	2.0	2.5	2.9	2.8	2.8	2.6	3.7	3.1	4.6	2.8	3.0
Benchmark													

Note : Reliability is actual performance under full iBus (4 weeks data).
 Minimum Standards and Benchmarks are those applicable under the new contract.

PART B - PERFORMANCE STATISTICS

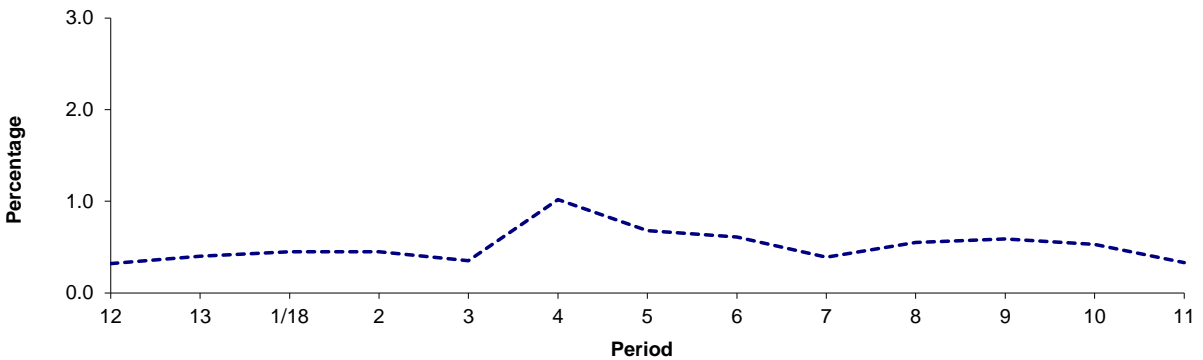
Route 25

Mileage Operated



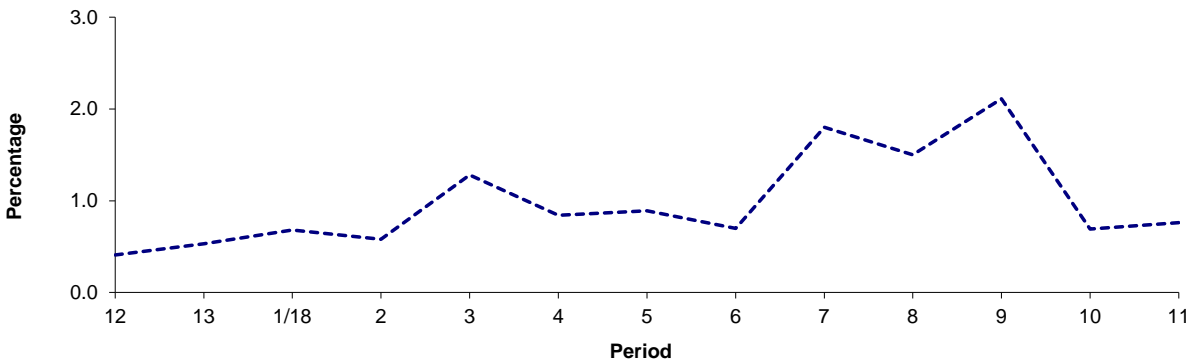
Period	12	13	1/18	2	3	4	5	6	7	8	9	10	11
P12 1718 to P11 1819	99.27	99.06	98.87	98.97	98.38	98.14	98.43	98.69	97.81	97.95	97.30	98.78	98.91
Min Standard	98.00	98.00	98.00	98.00	98.00	98.00	98.00	98.00	98.00	98.00	98.00	98.00	98.00

Deductible Mileage



Period	12	13	1/18	2	3	4	5	6	7	8	9	10	11
P12 1718 to P11 1819	0.32	0.40	0.45	0.45	0.35	1.02	0.68	0.61	0.39	0.55	0.59	0.53	0.33

Non-deductible Mileage

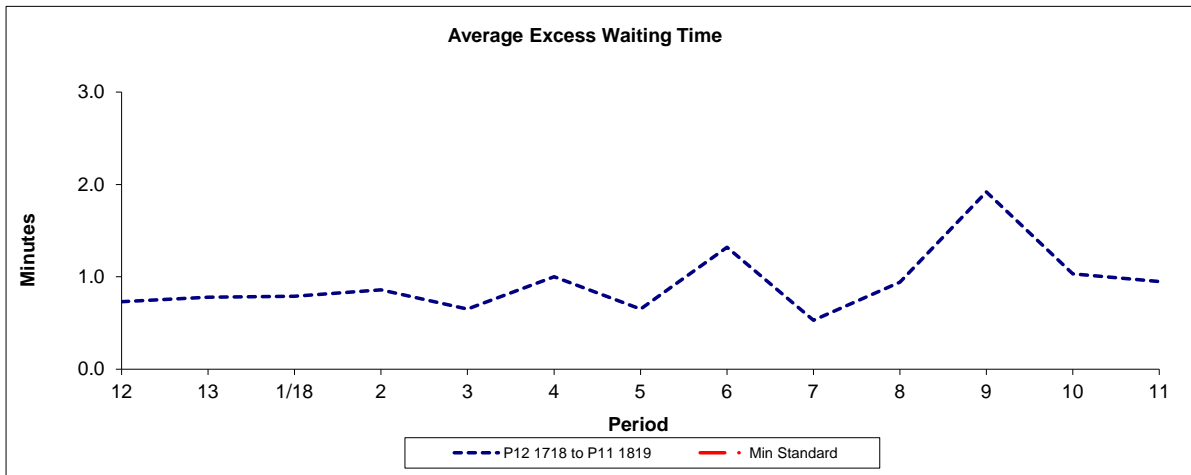


Period	12	13	1/18	2	3	4	5	6	7	8	9	10	11
P12 1718 to P11 1819	0.41	0.53	0.68	0.58	1.28	0.84	0.89	0.70	1.80	1.50	2.11	0.69	0.76

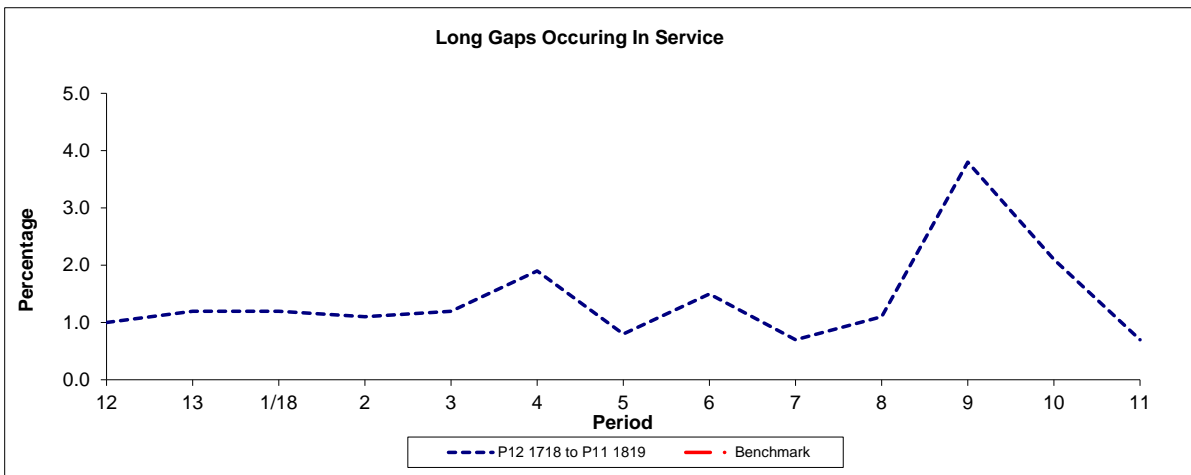
Note: Mileage is based on 4 weeks data

PART B - PERFORMANCE STATISTICS

Route N25



Period	12	13	1/18	2	3	4	5	6	7	8	9	10	11
P12 1718 to P11 1819	0.73	0.78	0.79	0.86	0.65	1.00	0.65	1.32	0.53	0.94	1.92	1.03	0.95
Min Standard													



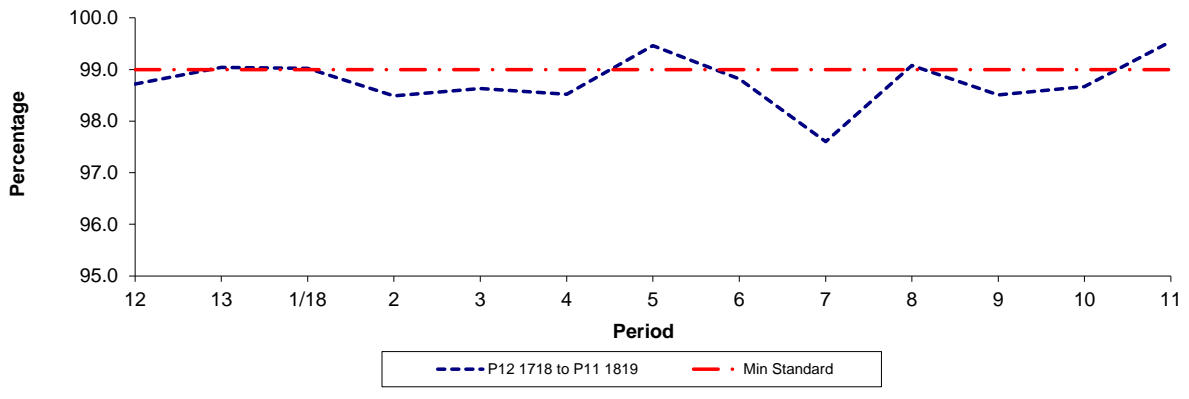
Period	12	13	1/18	2	3	4	5	6	7	8	9	10	11
P12 1718 to P11 1819	1.0	1.2	1.2	1.1	1.2	1.9	0.8	1.5	0.7	1.1	3.8	2.1	0.7
Benchmark													

Note : Reliability is actual performance under full iBus (4 weeks data).
Minimum Standards and Benchmarks are those applicable under the new contract.

PART B - PERFORMANCE STATISTICS

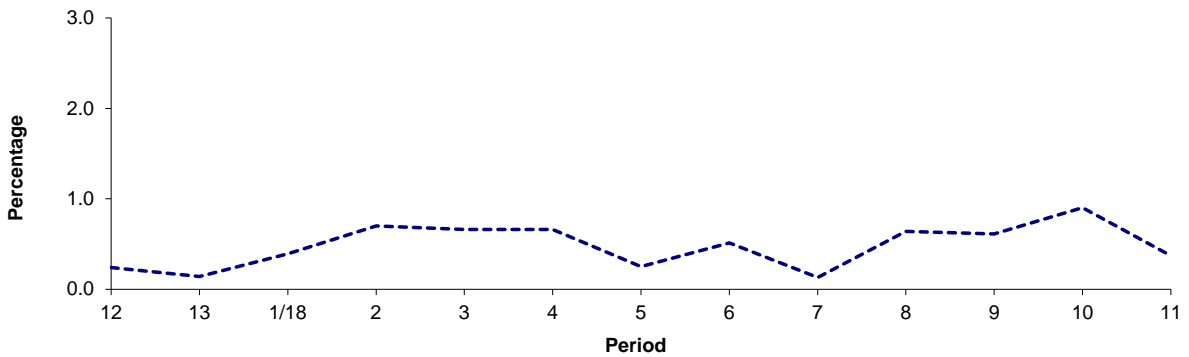
Route N25

Mileage Operated



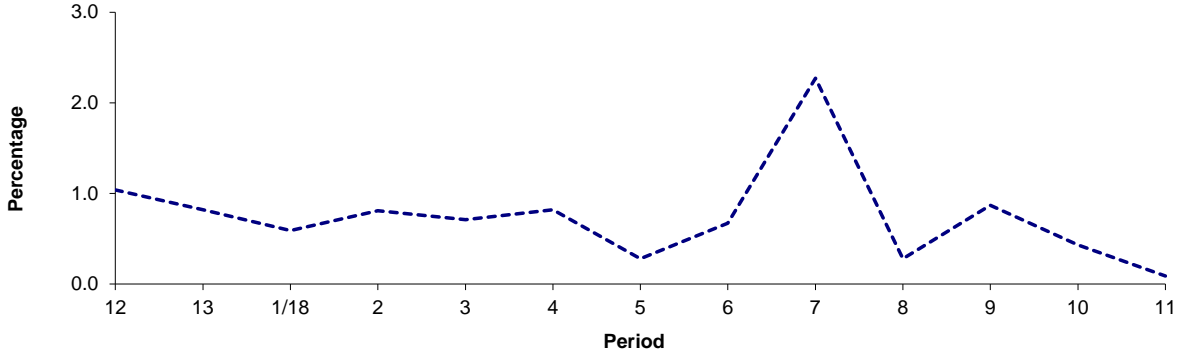
Period	12	13	1/18	2	3	4	5	6	7	8	9	10	11
P12 1718 to P11 1819	98.72	99.04	99.02	98.49	98.63	98.52	99.46	98.82	97.60	99.08	98.51	98.67	99.54
Min Standard	99.00	99.00	99.00	99.00	99.00	99.00	99.00	99.00	99.00	99.00	99.00	99.00	99.00

Deductible Mileage



Period	12	13	1/18	2	3	4	5	6	7	8	9	10	11
P12 1718 to P11 1819	0.24	0.14	0.39	0.70	0.66	0.66	0.25	0.51	0.13	0.64	0.61	0.90	0.37

Non-deductible Mileage



Period	12	13	1/18	2	3	4	5	6	7	8	9	10	11
P12 1718 to P11 1819	1.04	0.82	0.59	0.81	0.71	0.82	0.28	0.67	2.27	0.28	0.87	0.43	0.09

Note: Mileage is based on 4 weeks data

ROUTE 25 - FULL iBUS RESULTS BY TIME OF DAY
QUARTERS 04/17 to 03/18 (06/01/18 - 04/01/19)

MONDAY - FRIDAY

Time Range	Expected Buses	Observed Buses	Observed Buses (%)	SWT (mins)	EWT (mins)	AWT (mins)	Probability of Waiting < 10 mins (%)	Probability of Waiting 10-20 mins (%)	Probability of Waiting 20-30 mins (%)	Probability of Waiting > 30 mins (%)	Long Gaps (%)	Maximum Gap (mins)
05:00 - 07:00	82,815	81,211	98.1	3.27	0.88	4.15	94.0	5.9	0.2	0.0	1.1	89.2
07:00 - 10:00	169,496	166,420	98.2	3.01	1.13	4.13	92.3	7.1	0.5	0.1	2.3	59.0
10:00 - 13:00	169,727	167,662	98.8	2.95	1.22	4.17	92.3	7.1	0.5	0.1	2.5	57.5
13:00 - 16:00	168,526	167,178	99.2	2.96	1.27	4.23	91.8	7.7	0.5	0.1	2.7	62.5
16:00 - 19:00	172,773	168,664	97.6	2.89	1.41	4.30	91.2	8.1	0.6	0.1	3.5	53.7
19:00 - 22:00	173,095	171,271	98.9	2.91	1.28	4.19	92.3	7.2	0.5	0.1	3.2	54.1
22:00 - 24:00	104,774	103,805	99.1	3.14	1.42	4.56	90.6	8.8	0.5	0.1	4.6	57.7
All Locations Summary	1,041,206	1,026,211	98.6	2.97	1.26	4.22	91.9	7.5	0.5	0.1	2.8	89.2

SATURDAY

Time Range	Expected Buses	Observed Buses	Observed Buses (%)	SWT (mins)	EWT (mins)	AWT (mins)	Probability of Waiting < 10 mins (%)	Probability of Waiting 10-20 mins (%)	Probability of Waiting 20-30 mins (%)	Probability of Waiting > 30 mins (%)	Long Gaps (%)	Maximum Gap (mins)
05:00 - 07:00	14,796	14,689	99.3	3.55	0.67	4.22	95.1	4.9	0.0	0.0	0.7	28.5
07:00 - 10:00	30,998	30,622	98.8	3.14	0.83	3.97	94.8	5.2	0.1	0.0	1.1	30.7
10:00 - 13:00	32,935	32,469	98.6	2.95	1.04	3.99	93.5	6.1	0.3	0.1	1.9	35.2
13:00 - 16:00	32,339	31,574	97.6	2.95	1.56	4.51	89.8	9.1	0.9	0.1	4.4	45.7
16:00 - 19:00	34,006	32,961	96.9	2.90	1.62	4.52	89.7	9.2	0.9	0.2	4.3	65.7
19:00 - 22:00	32,895	32,715	99.5	3.05	1.59	4.64	89.4	9.7	0.8	0.2	4.9	50.9
22:00 - 24:00	20,435	20,287	99.3	3.25	1.53	4.78	89.0	10.4	0.6	0.0	5.0	41.7
All Locations Summary	198,404	195,317	98.4	3.01	1.36	4.37	91.1	8.1	0.7	0.1	3.5	65.7

SUNDAY AND BANK HOLIDAYS

Time Range	Expected Buses	Observed Buses	Observed Buses (%)	SWT (mins)	EWT (mins)	AWT (mins)	Probability of Waiting < 10 mins (%)	Probability of Waiting 10-20 mins (%)	Probability of Waiting 20-30 mins (%)	Probability of Waiting > 30 mins (%)	Long Gaps (%)	Maximum Gap (mins)
05:00 - 07:00	14,466	14,424	99.7	3.95	0.70	4.66	92.5	7.4	0.1	0.0	0.8	37.7
07:00 - 10:00	29,983	29,620	98.8	3.56	0.71	4.28	94.2	5.7	0.1	0.0	0.8	42.4
10:00 - 13:00	32,985	32,627	98.9	3.26	0.90	4.17	94.0	5.8	0.2	0.0	1.7	37.0
13:00 - 16:00	33,588	33,482	99.7	3.25	1.19	4.44	91.8	7.8	0.4	0.0	2.9	36.9
16:00 - 19:00	34,729	34,264	98.7	3.19	1.22	4.41	91.8	7.8	0.4	0.1	3.3	44.7
19:00 - 22:00	35,461	35,374	99.8	3.14	1.19	4.33	92.4	7.2	0.3	0.1	3.3	54.1
22:00 - 24:00	22,595	22,524	99.7	3.19	1.08	4.27	93.0	6.9	0.1	0.0	2.6	29.2
All Locations Summary	203,807	202,315	99.3	3.27	1.07	4.34	92.6	7.0	0.3	0.0	2.5	54.1

ALL DAYS

Time Range	Expected Buses	Observed Buses	Observed Buses (%)	SWT (mins)	EWT (mins)	AWT (mins)	Probability of Waiting < 10 mins (%)	Probability of Waiting 10-20 mins (%)	Probability of Waiting 20-30 mins (%)	Probability of Waiting > 30 mins (%)	Long Gaps (%)	Maximum Gap (mins)
05:00 - 07:00	112,077	110,324	98.4	3.35	0.85	4.20	94.0	5.9	0.1	0.0	1.0	89.2
07:00 - 10:00	230,477	226,662	98.3	3.05	1.08	4.13	92.6	6.9	0.4	0.1	2.2	59.0
10:00 - 13:00	235,647	232,758	98.8	2.99	1.15	4.14	92.7	6.8	0.4	0.1	2.3	57.5
13:00 - 16:00	234,453	232,234	99.1	2.99	1.30	4.30	91.5	7.9	0.5	0.1	2.9	62.5
16:00 - 19:00	241,508	235,889	97.7	2.92	1.42	4.34	91.1	8.2	0.6	0.1	3.6	65.7
19:00 - 22:00	241,451	239,360	99.1	2.95	1.32	4.27	91.9	7.5	0.5	0.1	3.5	54.1
22:00 - 24:00	147,804	146,616	99.2	3.16	1.40	4.56	90.6	8.8	0.5	0.1	4.4	57.7
All Locations Summary	1,443,417	1,423,843	98.6	3.00	1.25	4.25	91.9	7.5	0.5	0.1	2.9	89.2

ROUTE N25 - FULL iBUS RESULTS BY TIME OF DAY
QUARTERS 04/17 to 03/18 (06/01/18 - 04/01/19)

MONDAY - FRIDAY

Time Range	Expected Buses	Observed Buses	Observed Buses (%)	SWT (mins)	EWT (mins)	AWT (mins)	Probability of Waiting < 10 mins (%)	Probability of Waiting 10-20 mins (%)	Probability of Waiting 20-30 mins (%)	Probability of Waiting > 30 mins (%)	Long Gaps (%)	Maximum Gap (mins)
00:00 - 05:00	106,118	104,880	98.8	4.99	0.38	5.37	90.6	9.1	0.3	0.0	0.4	46.4
All Locations Summary	106,118	104,880	98.8	4.99	0.38	5.37	90.6	9.1	0.3	0.0	0.4	46.4

SATURDAY

Time Range	Expected Buses	Observed Buses	Observed Buses (%)	SWT (mins)	EWT (mins)	AWT (mins)	Probability of Waiting < 10 mins (%)	Probability of Waiting 10-20 mins (%)	Probability of Waiting 20-30 mins (%)	Probability of Waiting > 30 mins (%)	Long Gaps (%)	Maximum Gap (mins)
00:00 - 05:00	22,184	22,193	100.0	4.93	0.37	5.30	90.6	9.1	0.3	0.0	0.4	104.1
All Locations Summary	22,184	22,193	100.0	4.93	0.37	5.30	90.6	9.1	0.3	0.0	0.4	104.1

SUNDAY AND BANK HOLIDAYS

Time Range	Expected Buses	Observed Buses	Observed Buses (%)	SWT (mins)	EWT (mins)	AWT (mins)	Probability of Waiting < 10 mins (%)	Probability of Waiting 10-20 mins (%)	Probability of Waiting 20-30 mins (%)	Probability of Waiting > 30 mins (%)	Long Gaps (%)	Maximum Gap (mins)
00:00 - 05:00	23,605	23,490	99.5	4.93	0.51	5.45	89.7	9.7	0.4	0.1	0.7	53.0
All Locations Summary	23,605	23,490	99.5	4.93	0.51	5.45	89.7	9.7	0.4	0.1	0.7	53.0

ALL DAYS

Time Range	Expected Buses	Observed Buses	Observed Buses (%)	SWT (mins)	EWT (mins)	AWT (mins)	Probability of Waiting < 10 mins (%)	Probability of Waiting 10-20 mins (%)	Probability of Waiting 20-30 mins (%)	Probability of Waiting > 30 mins (%)	Long Gaps (%)	Maximum Gap (mins)
00:00 - 05:00	151,907	150,563	99.1	4.97	0.41	5.38	90.4	9.3	0.3	0.0	0.5	104.1
All Locations Summary	151,907	150,563	99.1	4.97	0.41	5.38	90.4	9.3	0.3	0.0	0.5	104.1

Transport for London - Live Mileage List

Route: 25

Service Change: 47404

Date: 01/12/2018

Reason for Issue

QSI points are highlighted.

OUT DIRECTION				
Timing Point Code	Stop Number	Stop Name	Metres	Miles
HOLBCS	2018	Holborn Circus		
	1157	City Thameslink S tation	182	0.11
S PLSS N	8586	King Edward S treet	301	0.19
	BP5575	S t Paul's S tation	464	0.29
	10352	Bank S tation / Poultry	300	0.19
BANKS NC	8558	Bank S tation / Cornhill	277	0.17
	8560	Bishopsgate	182	0.11
	8578	S t Mary Axe	156	0.10
	35484	S t Katharine Cree	279	0.17
ALDGS N	BP5998	Aldgate S tation	307	0.19
	33431	Aldgate East S tation	265	0.16
	BP5408	Altab Ali Park	203	0.13
	2046	The East London Mosque	363	0.23
WCPLS N	944	Whitechapel S tn / Royal London Hosp	426	0.26
	2051	Booth Memorial	339	0.21
	1735	S tepney Green	219	0.14
	4828	S tepney Green S tation	309	0.19
	R0674	Bancroft Road / Ocean Estate	162	0.10
	7724	Queen Mary / University Of London	284	0.18
	4825	Regents Canal	314	0.20
MNS NME	20674	Mile End S tation	247	0.15
	2058	Coborn Road	348	0.22
	901	Bow Road S tation	247	0.15
BWCHS N	902	Bow Church S tation	382	0.24
	348	Bow Church	279	0.17
	2066	Marshgate Lane	491	0.31
	2068	Warton Road	495	0.31
	2070	S tratford High S t S tn / Carpenters Rd	320	0.20
	BP5307	S tratford Bus S tation	640	0.40
STFDBS	BP976	S tratford Bus S tation	76	0.05
	36929	S tratford Centre	382	0.24
	2238	Litchfield Avenue	409	0.25
	4894	Water Lane / University Of East London	160	0.10
	1577	Atherton Leisure Centre	497	0.31
	14510	Margery Park Road	403	0.25
	1937	Woodgrange Road	275	0.17
FGATGS	9045	Green S treet	529	0.33
	1740	Katherine Road	334	0.21
	14520	Shrewsbury Road	234	0.15
	14522	Woodgrange Park S tation	232	0.14
MNPKBY	4644	High S treet North	302	0.19
	14527	First Avenue	318	0.20
	14529	Rabbits Road	180	0.11
	14531	Seventh Avenue	218	0.14
	4645	Little Ilford Lane	375	0.23
	14540	North Circular Road	251	0.16
	R0757	Ilford Hill	430	0.27
	FC44	Chapel Road	149	0.09
	FC60	Redbridge Central Library	475	0.30
ILFDHS	R0868	Hainault S treet	242	0.15
Total Route Mileage - Out Direction			15252	9.48
			Metres	Miles

Tranche 681**New Contract**

BACK DIRECTION				
Timing Point Code	Stop Number	Stop Name	Metres	Miles
ILFDHS	FC41	Hainault Street		
	BP3460	Redbridge Central Library	280	0.17
	37219	Ilford Broadway	358	0.22
	BP1379	Chapel Road	283	0.18
	14535	Dersingham Avenue	504	0.31
	3013	Little Ilford Lane	200	0.12
	14530	Rabbits Road	384	0.24
	14528	First Avenue	241	0.15
MNPKBY	4643	High Street North	210	0.13
	14523	Woodgrange Park Station	349	0.22
	R0325	Shrewsbury Road	370	0.23
	1739	Katherine Road	312	0.19
FGATGS	14581	Green Street	344	0.21
	4876	Woodgrange Road	243	0.15
	14515	Sproston Road	278	0.17
	14511	Margery Park Road	259	0.16
	1578	Atherton Leisure Centre	421	0.26
	4896	Water Lane / University Of East London	295	0.18
	8019	Stratford Centre	547	0.34
STFDBS	BP6275	Stratford Bus Station	560	0.35
	20760	Stratford High St / Carpenters Road	578	0.36
	4897	Warton Road	217	0.13
	2067	Abbey Lane	293	0.18
	4875	Bow Flyover	511	0.32
	2062	Bow Church	440	0.27
BWCHSN	25096	Bow Church Station	219	0.14
	900	Bow Road Station	260	0.16
	2059	Coborn Road	411	0.26
MNSNME	4826	Mile End Station	261	0.16
	BP2895	Regents Canal	275	0.17
	7725	Queen Mary / University Of London	217	0.13
	2952	Ocean Estate	247	0.15
	947	Stepney Green Station	298	0.19
	1736	Stepney Green	298	0.19
	2050	Booth Memorial	183	0.11
	945	Sidney Street	167	0.10
WCPLSN	943	Whitechapel Stn / Royal London Hosp	370	0.23
	2045	The East London Mosque	344	0.21
	2043	Altab Ali Park	218	0.14
	BP5244	Aldgate East Station	458	0.28
ALDGSN	33683	Aldgate Station	123	0.08
	8579	St Katharine Cree	333	0.21
	8577	St Mary Axe	244	0.15
BANKSNC	8559	Bank Station / Cornhill	352	0.22
	8590	Poultry / Bank Station	245	0.15
	8556	Bread Street	277	0.17
SPLSSN	BP3442	St Paul's Station	273	0.17
HOLBCS	BP5775	City Thameslink Station	311	0.19
Total Route Mileage - Back Direction			14861	9.23
			Metres	Miles

Transport for London - Live Mileage List

Route: N25

Service Change: 50540

Date: 01/12/2018

Tranche 681

Reason for Issue

QSI points are highlighted.

OUT DIRECTION				
Timing Point Code	Stop Number	Stop Name	Metres	Miles
OXFCHSW	34846	Holles Street		
	15783	Great Titchfield St / Oxford Circus Stn	856	0.53
	37317	Tottenham Court Road Station	523	0.32
TCTRNO	14456	New Oxford Street	292	0.18
	29844	Museum Street	264	0.16
HOLBSN	33107	Procter Street	491	0.31
	8419	Brownlow Street	344	0.21
	1472	Chancery Lane Station	206	0.13
	20628	Holborn Circus / Fetter Lane	182	0.11
HOLBVD	2018	Holborn Circus	250	0.155343
	1157	City Thameslink Station	182	0.11
SPLSSN	8586	King Edward Street	301	0.187033
	BP5575	St Paul's Station	464	0.29
BANKSNY	10352	Bank Station / Poultry	300	0.19
	8558	Bank Station / Cornhill	277	0.17
	8560	Bishopsgate	182	0.11
	8578	St Mary Axe	156	0.10
	35484	St Katharine Cree	279	0.17
ALDGSN	BP5998	Aldgate Station	307	0.19
	33431	Aldgate East Station	265	0.16
	BP5408	Altamont Park	203	0.13
	2046	The East London Mosque	363	0.23
WCPLSN	944	Whitechapel Stn / Royal London Hosp	426	0.26
	2051	Booth Memorial	339	0.21
	1735	Stepney Green	219	0.14
	4828	Stepney Green Station	309	0.19
	R0674	Bancroft Road / Ocean Estate	162	0.10
	7724	Queen Mary / University Of London	284	0.18
	4825	Regents Canal	314	0.20
MNSNME	20674	Mile End Station	247	0.15
	2058	Coborn Road	348	0.22
	901	Bow Road Station	247	0.15
BWCHSN	902	Bow Church Station	382	0.24
	348	Bow Church	279	0.17
	2066	Marshgate Lane	491	0.31
	2068	Warton Road	495	0.31
	2070	Stratford High Street / Carpenters Rd	320	0.20
STFDBS	BP976	Stratford Bus Station	716	0.44
	36929	Stratford Centre	382	0.24
	2238	Litchfield Avenue	409	0.25
	4894	Water Lane / University Of East London	160	0.10
	1577	Atherton Leisure Centre	497	0.31
	14510	Margery Park Road	403	0.25
	1937	Woodgrange Road	275	0.17
FGATGS	9045	Green Street	529	0.33
	1740	Katherine Road	334	0.21
	14520	Shrewsbury Road	234	0.15
	14522	Woodgrange Park Station	232	0.14
MNPKBY	4644	High Street North	302	0.19
	14527	First Avenue	318	0.20
	14529	Rabbits Road	180	0.11
	14531	Seventh Avenue	218	0.14
	4645	Little Ilford Lane	375	0.23
	14540	North Circular Road	251	0.16
	R0757	Ilford Hill	430	0.27
	FC44	Chapel Road	149	0.09
	FC60	Redbridge Central Library	475	0.30
ILFDHS	R0868	Hainault Street	242	0.15
Total Route Mileage - Out Direction			18660	11.59
			Metres	Miles

* Please note, ex Oxford Circus, Holles Street, West Side, between midnight and 4am, buses are re-routed from Cavendish Place via Regent Street to Oxford Street to re-join line of routeing. There is no change to stops and Tenderers should assume the same mileage.

**Alighting point at Holles Street removed and replaced with
Great Titchfield Street (33924)**

New Contract

BACK DIRECTION				
Timing Point Code	Stop Number	Stop Name	Metres	Miles
ILFDHS	FC 41	Hainault Street		
	BP3460	Redbridge Central Library	280	0.17
	37219	Ilford Broadway	358	0.22
	BP1379	Chapel Road	283	0.18
	14535	Dersingham Avenue	504	0.31
	3013	Little Ilford Lane	200	0.12
	14530	Rabbits Road	384	0.24
	14528	First Avenue	241	0.15
MNPKBY	4643	High Street North	210	0.13
	14523	Woodgrange Park Station	349	0.22
	R0325	Shrewsbury Road	370	0.23
	1739	Katherine Road	312	0.19
FGATGS	14581	Green Street	344	0.21
	4876	Woodgrange Road	243	0.15
	14515	Sproston Road	278	0.17
	14511	Margery Park Road	259	0.16
	1578	Atherton Leisure Centre	421	0.26
	4896	Water Lane / University Of East London	295	0.18
	8019	Stratford Centre	547	0.34
STFDBS	BP6275	Stratford Bus Station	560	0.35
	20760	Stratford High St / Carpenters Road	578	0.36
	4897	Warton Road	217	0.13
	2067	Abbey Lane	293	0.18
	4875	Bow Flyover	511	0.32
	2062	Bow Church	440	0.27
BWCHSN	25096	Bow Church Station	219	0.14
	900	Bow Road Station	260	0.16
	2059	Coborn Road	411	0.26
MNSNME	4826	Mile End Station	261	0.16
	BP2895	Regents Canal	275	0.17
	7725	Queen Mary / University Of London	217	0.13
	2952	Ocean Estate	247	0.15
	947	Stepney Green Station	298	0.19
	1736	Stepney Green	298	0.19
	2050	Booth Memorial	183	0.11
	945	Sidney Street	167	0.10
WCPLSN	943	Whitechapel Stn / Royal London Hosp	370	0.23
	2045	The East London Mosque	344	0.21
	2043	Altab Ali Park	218	0.14
	BP5244	Aldgate East Station	458	0.28
ALDGSN	33683	Aldgate Station	123	0.08
	8579	St Katharine Cree	333	0.21
	8577	St Mary Axe	244	0.15
	8559	Bank Station / Cornhill	352	0.22
BANKSNY	8590	Poultry / Bank Station	245	0.15
	8556	Bread Street	277	0.17
SPLSSN	BP3442	St Paul's Station	273	0.17
	1156	City Thameslink Station	337	0.21
	8571	Holborn Circus	280	0.17
HOLBVD	2019	Holborn Circus / Fetter Lane	167	0.10
	8420	Chancery Lane Station	250	0.16
	1473	Brownlow Street	188	0.12
HOLBSN	1057	Holborn Station	254	0.16
	BP5294	New Oxford Street / High Holborn	366	0.23
TCTRNO	35030	Tottenham Court Road Station	319	0.20
	165	Oxford Street / Soho Street	436	0.27
	976	Wardour Street	99	0.06
OXFCGT	33924	Great Titchfield St / Oxford Circus Stn	343	0.21
Total Route Mileage - Back Direction			17589	10.93
			Metres	Miles

FINAL MILEAGE TO BE CONFIRMED.