

7. Service Specification

Route: 42

Contract Reference: QC53202

This Service Specification forms section 7 of the ITT and should be read in conjunction with the ITT document, Version 1 dated 29 September 2011.

You are formally invited to tender for the provision of the bus service detailed below and in accordance with this Service Specification. Tenderers must ensure that a Compliant Tender is submitted and this will only be considered for evaluation if all parts of the Tender documents, as set out in section 11, have been received by the Corporation by the Date of Tender. The Tender must be fully completed in the required format, in accordance with the Instructions to Tenderers. A Compliant Tender must comply fully with the requirements of the Framework Agreement; adhere to the requirements of the Service Specification; and reflect the price of operating the Services with new vehicles.

Route Number	42
Terminus Points	East Dulwich, Sainsbury's and Liverpool Street
Contract Basis	Incentivised
Commencement Date	1 st October 2016
Vehicle Type	87 capacity, dual door, double deck, subject to a satisfactory route test
Current Maximum Approved Dimensions	10.7 metres long and 2.55 metres wide
New Vehicles Mandatory	Yes
Hybrid Price Required	Yes
Sponsored Route	No
Advertising Rights	Operator
Minimum Performance Standard	Average Excess Wait Time - No more than 1.20 minutes
Extension Threshold	Average Excess Wait Time Threshold - 1.10 minutes
Minimum Operated Mileage Standard	No less than 98.00%

The Date of Tender for this ITT is: No later than 12 Noon on Monday 21st September 2015

Tenderers should refer to section 3 of Part A for the Service Specification Explanatory Notes and Appendix B of section 5 for the Example Service Specification of the ITT document.

SERVICE SPECIFICATION

- 1) SERVICE SPEC - ROUTE SPECIFICATION INFORMATION
- 2) NOTES
- 3) SCHEDULE REQUIREMENTS & PINCHPOINTS
- 4) OPERATIONAL CONSIDERATIONS
- 5) ROUTE RECORD, CURRENT PERFORMANCE, QSI BY TIME OF DAY, IBUS MILEAGE & QSI POINTS

2) NOTES

Proposed Changes:

At this time, the Corporation expects to implement a change to the existing service prior to the commencement of the new Route Agreement for Route No. 42.

- Ex Denmark Hill, Sunray Avenue, two Mondays to Fridays AM peak flow journeys are specified between 0700 and 0825 providing a frequency of every 8 minutes.
- Ex Liverpool Street, Worship Street, two Mondays to Fridays PM peak flow journeys are specified between 1600 and 1800 providing a frequency of every 8-9 minutes (7 buses per hour).
- From 1st April 2016, as a result of the removal of Aldgate gyratory (See Section 4.7), Route No. 42 is re-routed in Aldgate.

Please note, the above journeys will be withdrawn when the new contract commences.

- Ex East Dulwich, Sainsbury's, Route No. 42 is re-routed from Mansell Street via Middlesex Street and St. Botolph Street to Duke's Place. A new stop on St. Botolph Street will be served (See Section 4.8).
- Aldgate High Street is withdrawn.
- There is no change to the routeing ex Liverpool Street, Worship Street but buses will only serve stop K on Minories as stop H on Minories is withdrawn (See Section 4.9).

Tenderers should note that the following alterations (subject to consultation) are proposed as part of this Service Specification for introduction with the new Route Agreement:

- Route No. 42 is re-structured to operate between East Dulwich, Sainsbury's and Liverpool Street.
- Route No. 42 is extended from Sainsbury's Access Road to Red Post Hill to re-join line of routeing.
- Sunray Avenue is withdrawn.
- Please note, changes to the layout of the stand at East Dulwich, Sainsbury's may be required.
- **Please see Section 5 for a full list of streets traversed and standing arrangements.**
- Conversion of Route No. 42 from 60 capacity, dual door, single deck buses to 87 capacity, dual door, double deck buses is specified, subject to a satisfactory route test.
- Departures ex East Dulwich, Sainsbury's, have been back projected from Red Post Hill at junction with Sunray Avenue.

Tenderers are also encouraged to offer two axle vehicles with a longer wheelbase and increased capacity, subject to route constraints. Tenders offering such vehicles will be welcomed and carefully considered by the Corporation. Triaxle vehicles are not being considered by the Corporation at this time.

2) **NOTES - Continued**

Operators should provide the following prices:

1. Annual diesel double deck price - based on minimum 5 year contract.
2. Annual hybrid price - based on minimum 5 year contract.
3. Annual hybrid price - with upfront payment of capital difference between diesel and hybrid for 5 year contract.

3) **SCHEDULE REQUIREMENTS & PINCHPOINTS**

3.1) **MONDAY TO FRIDAY SCHEDULE REQUIREMENTS & PINCHPOINTS**

East Dulwich, Sainsbury's to Liverpool Street, Appold Street		Liverpool Street, Worship Street to East Dulwich, Sainsbury's			
First departure no later than 0445.		First departure no later than 0500.			
0440 - 0515	Every 30 minutes	0455 - 0530	Every 30 minutes		
0516 - 0545	Every 15 minutes	0531 - 0700	Every 15 minutes		
0546 - 1805	Every 10 minutes	0701 - 1940	Every 10 minutes		
1806 - 2005	Every 15 minutes	1941 - 2040	Every 15 minutes		
2006 - 2330	Every 20 minutes	2041 - 0005	Every 20 minutes		
Last departure no earlier than 2325.		Last departure no earlier than 2400.			
Pinchpoints					
Tower Bridge Road, Tooley Street	0705 - 0905	10 minutes	Albany Road, Thurlow Street (Camberwell)	0730 - 0900	10 minutes
	1500 - 1630	10 minutes		1500 - 1640	10 minutes

3.2) **SATURDAY AND GOOD FRIDAY SCHEDULE REQUIREMENTS & PINCHPOINTS**

East Dulwich, Sainsbury's to Liverpool Street, Appold Street		Liverpool Street, Worship Street to East Dulwich, Sainsbury's			
First departure no later than 0445.		First departure no later than 0500.			
0440 - 0515	Every 30 minutes	0455 - 0530	Every 30 minutes		
0516 - 0655	Every 20 minutes	0531 - 0810	Every 20 minutes		
0656 - 0810	Every 15 minutes	0811 - 0910	Every 15 minutes		
0811 - 1745	Every 10 minutes	0911 - 1840	Every 10 minutes		
1746 - 1945	Every 15 minutes	1841 - 2040	Every 15 minutes		
1946 - 2330	Every 20 minutes	2041 - 0005	Every 20 minutes		
Last departure no earlier than 2325.		Last departure no earlier than 2400.			
Pinchpoints					
Tower Bridge Road, Tooley Street	0850 - 1100	10 minutes	Albany Road, Thurlow Street (Camberwell)	0935 - 1105	10 minutes

3) SCHEDULE REQUIREMENTS & PINCHPOINTS - Continued

3.3) SUNDAY AND PUBLIC HOLIDAYS (EXCEPT GOOD FRIDAY AND CHRISTMAS DAY) SCHEDULE REQUIREMENTS & PINCHPOINTS

East Dulwich, Sainsbury's and Liverpool Street, Appold Street		Liverpool Street, Worship Street to East Dulwich, Sainsbury's			
First departure no later than 0645.		First departure no later than 0700.			
0640 - 1025	Every 20 minutes	0655 - 1000	Every 20 minutes		
1026 - 1655	Every 15 minutes	1001 - 1700	Every 15 minutes		
1656 - 2330	Every 20 minutes	1701 - 0005	Every 20 minutes		
Last departure no earlier than 2325.		Last departure no earlier than 2400.			
Pinchpoints					
Tower Bridge Road, Tooley Street	1005 - 1105	20 minutes	Albany Road, Thurlow Street (Camberwell)	1025 - 1125	15 minutes
	1106 - 1135	15 minutes			

Tenderers must identify the cost of the Boxing Day element of this service separately.

4) OPERATIONAL CONSIDERATIONS

- 4.1) Route No. 42 should be best separated from Route No. 78 between Tower Bridge Road (at junction with Grange Road) and Bishopsgate (at junction with Primrose Street) during all periods.
- 4.2) Route No. 42 can suffer from unpredictable traffic delays in the Camberwell, Bricklayers Arms and Liverpool Street Station areas.
- 4.3) Route No. 42 serves several markets in the Camberwell, East Street and Aldgate area. Traffic conditions will therefore have a severe impact on Route No. 42 on market days (Sunday daytime). Tenderers should bear this in mind when devising schedules.
- 4.4) The London Borough of Southwark are re-developing the Aylesbury Estate. There will be an increase in housing units from 2700 to around 3500 which is expected to be completed over the next 10 years.
- 4.5) A housing development is expected on vacant land adjacent to Dulwich Community Hospital on East Dulwich Grove and a possible secondary school which could increase demand on Route No. 42.

4) OPERATIONAL CONSIDERATIONS – Continued

- 4.6) Works are currently underway to remove the gyratory at Aldgate which are expected to be completed in Autumn 2016. The scheme involves making St. Botolph Street, most of Aldgate High Street and Minories two way. The western section of Aldgate High Street between Duke's Place and Minories will be pedestrianised. This will create a traffic free space between the Sir John Cass's Foundation Primary School and St. Botolph Church. Mansell Street, Houndsditch and Duke's Place will all remain one way as now. The junction of Goodman's Yard and Minories will also be altered to allow northbound traffic to enter Minories.
- 4.7) There will be a new northbound stop on St. Botolph Street north of St. Botolph's Church. This partially replaces stop R and will allow the removal of stop A on Duke's Place as the distance between them will be only approximately 120 metres.
- 4.8) Two way of Minories means that southbound stop H near Aldgate bus station has to be re-located further south. This is to prevent blocking back at the junction with Aldgate High Street. It is therefore proposed to combine stops H & K into one stop just south of the bus station exit.
- 4.9) Crossrail will connect the City, Canary Wharf, the West End and Heathrow Airport to commuter areas east and west of the capital. Major construction of the railway began in 2010, with the first services expected to commence through the central London tunnelled section in late 2018. The full Crossrail service will be operating from Heathrow and Reading to Abbey Wood and Shenfield in late 2019. The construction impacts of Crossrail could affect Route No. 42 and it is anticipated that some passenger demand for Route No. 42 may shift to this line when it opens. Route No. 42 will be reviewed after the opening date.
- 4.10) Two continuous largely segregated cycle routes through central London are proposed. The East-West Cycle Superhighway between Tower Hill and Acton and the North-South Cycle Superhighway between Elephant & Castle and Farringdon station. North of Farringdon station, the North-South route is planned to connect to a new Quietway back-street cycle route to King's Cross. This would provide cyclists with a route through central London on low-traffic streets. Route No. 42 will be affected by the construction of the Cycle Superhighway during 2015/2016.

**5) ROUTE RECORD, CURRENT PERFORMANCE, QSI BY TIME OF DAY,
IBUS MILEAGE & QSI POINTS**

5.1) ROUTE RECORD
As per Busnet printout.

5.2) CURRENT PERFORMANCE
As per current print out.

5.3) QSI BY TIME OF DAY
As per current print out.

5.4) IBUS MILEAGE & QSI POINTS
As per current print out.

LONDON BUSES - ROUTE DESCRIPTION

ROUTE 42: East Dulwich, Sainsburys - Liverpool Street Station, Worship Street

Date of Structural Change: 1 October 2016.

Date of Service Change: 1 October 2016.

Reason for Issue: New Tender.

STREETS TRAVERSED

Towards Liverpool Street Station, Worship Street: Sainsburys Access Road, Edgar Kail Way, Dog Kennel Hill, Grove Vale, Lordship Lane, East Dulwich Grove, Red Post Hill, Denmark Hill, Camberwell Green (West Side), Camberwell Road, Albany Road, Thurlow Street, East Street, Old Kent Road, Bricklayer's Arms Roundabout, Tower Bridge Road, Tower Bridge, Tower Bridge Approach, Tower Hill, Minories, Goodman's Yard, Mansell Street, St Botolph Street, Duke's Place, Bevis Marks, Camomile Street, Bishopsgate, Primrose Street, Appold Street.

Towards East Dulwich, Sainsburys: Worship Street, Norton Folgate, Bishopsgate, Camomile Street, Outwich Street, Houndsditch, St Botolph Street, Aldgate High Street, Minories, Goodman's Yard, Mansell Street, Tower Bridge Approach, Tower Bridge, Tower Bridge Road, Bricklayer's Arms Roundabout, Old Kent Road, East Street, Thurlow Street, Albany Road, Camberwell Road, Camberwell Green (West Side), Denmark Hill, Red Post Hill, East Dulwich Grove, Lordship Lane, Grove Vale, Dog Kennel Hill, Edgar Kail Way, Sainsburys Access Road.

AUTHORISED STANDS, CURTAILMENT POINTS, & BLIND DESCRIPTIONS

Please note that only stands, curtailment points, & blind descriptions as detailed in this contractual document may be used.

EAST DULWICH, SAINSBURYS

Private stand for one bus in Sainsbury's car park, adjacent to the main entrance of the store.

Buses proceed from Sainsburys Access Road direct to stand, departing to Sainsburys Access Road. Set down in Sainsburys Access Road, At Stop N (BP074 - East Dulwich Sainsbury's, Last Stop on LOR: 13398 - Deepdene Road) and pick up in Sainsburys Access Road, At Stop N (BP074 - East Dulwich Sainsbury's, First Stop on LOR: BP1965 - Casino Avenue).

AVAILABILITY:	At any time.
OPERATING RESTRICTIONS:	Unscheduled curtailments only
MEAL RELIEFS:	No meal relief vehicles to stand at any time.
FERRY VEHICLES:	No ferry vehicles to park on stand at any time.
BLIND DISPLAY:	East Dulwich, Sainsbury's.

CAMBERWELL GREEN (from LIVERPOOL STREET STATION, WORSHIP STREET)

Buses proceed from Denmark Hill via Orpheus Street and Daneville Road departing to Denmark Hill. Set down in Denmark Hill, at Stop Q (26059 - Denmark Hill / Camberwell Green, Last Stop on LOR: 26059 - Denmark Hill / Camberwell Green) and pick up in Denmark Hill, at Stop R (263 - Denmark Hill / Camberwell Green, First Stop on LOR: 263 - Denmark Hill / Camberwell Green).

AVAILABILITY:	At any time.
OPERATING RESTRICTIONS:	Turning Point Only - Buses must not stand
BLIND DISPLAY:	Camberwell Green.

BRICKLAYER'S ARMS

Public stand for two buses on south side of Bartholomew Street, commencing opposite number 21 and extending 24 metres east.

From East Dulwich, Sainsburys.

Buses proceed from Old Kent Road via Bricklayer's Arms Roundabout, Great Dover Street and Bartholomew Street to stand, departing via Bartholomew Street, New Kent Road and Bricklayer's Arms Roundabout to Old Kent Road. Set down in Old Kent Road, at Stop BP (34158 - Bricklayer's Arms, Last Stop on LOR: 34158 - Bricklayer's Arms) and pick up in Old Kent Road, at stop BF (918 - Bricklayer's Arms, First Stop on LOR: 918 - Bricklayer's Arms).

From Liverpool Street Station, Worship Street.

Buses proceed from Tower Bridge Road via Bricklayer's Arms Roundabout, Great Dover Street and Bartholomew Street to stand, departing via Bartholomew Street, New Kent Road and Bricklayer's Arms Roundabout to Tower Bridge Road. Set down in Tower Bridge Road, at Stop BJ (4610 - Bricklayer's Arms / Tower Bridge Road, Last Stop on LOR: 4610 - Bricklayer's Arms / Tower Bridge Road) and pick up in Tower Bridge Road, at Stop BH (34290 - Bricklayer's Arms / Tower Bridge Road, First Stop on LOR: 34290 - Bricklayer's Arms / Tower Bridge Road).

AVAILABILITY:	At any time.
OPERATING RESTRICTIONS:	Unscheduled curtailments only.
MEAL RELIEFS:	No meal relief vehicles to stand at any time.
FERRY VEHICLES:	No ferry vehicles to park on stand at any time.
BLIND DISPLAY:	Bricklayer's Arms.

TOWER GATEWAY STATION (from East Dulwich, Sainsburys)

Buses proceed from Minories via Goodman's Yard departing to Mansell Street. Set down in Minories, at Stop TC (35576 - Tower Gateway Station [dlr], Last Stop on LOR: 35576 - Tower Gateway Station [dlr]) and pick up in Mansell Street, at Stop TE (4829 - Tower Hill / Tower Gateway Station [dlr], First Stop on LOR: 4829 - Tower Hill / Tower Gateway Station [dlr]).

AVAILABILITY:	At any time.
OPERATING RESTRICTIONS:	Turning Point Only - Buses must not stand
BLIND DISPLAY:	Tower Gateway.

ALDGATE (from East Dulwich, Sainsburys)

Buses proceed from St Botolph Street via Duke's Place, Bevis Marks, Camomile Street, Outwich Street and Houndsditch departing to St Botolph Street. Set down in St Botolph Street, at Stop B (34190 - St Botolph Street, Last Stop on LOR: 29648 - Mansell Street) and pick up in St Botolph Street, at Stop A (34190 - St Botolph Street, First Stop on LOR: 34190 - St Botolph Street).

AVAILABILITY: At any time.
OPERATING RESTRICTIONS: **Turning Point Only - Buses must not stand**
BLIND DISPLAY: Aldgate.

LIVERPOOL STREET STATION, WORSHIP STREET NORTH SIDE

Public stand for three buses on route 42 on north side of Worship Street commencing 28 metres east of a point opposite l/s no.15 and extending 31 metres west.

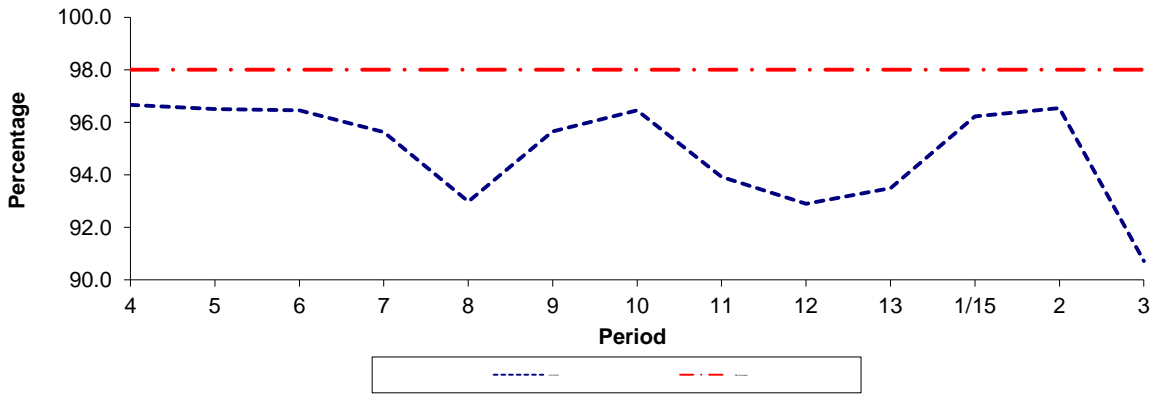
Buses proceed from Appold Street via Worship Street to stand, departing to Worship Street. Set down in Appold Street, at Stop AP (BP3491 - Appold Street, Last Stop on LOR: BP3491 - Appold Street) and pick up in Worship Street, at Stop C (BP3492 - Worship Street, First Stop on LOR: BP3492 - Worship Street).

AVAILABILITY: At any time.
OPERATING RESTRICTIONS: No more than 2 buses on Route 42 should be scheduled to stand at any one time.
MEAL RELIEFS: No meal relief vehicles to stand at any time.
FERRY VEHICLES: No ferry vehicles to park on stand at any time.
BLIND DISPLAY: Liverpool Street.

PART B - PERFORMANCE STATISTICS

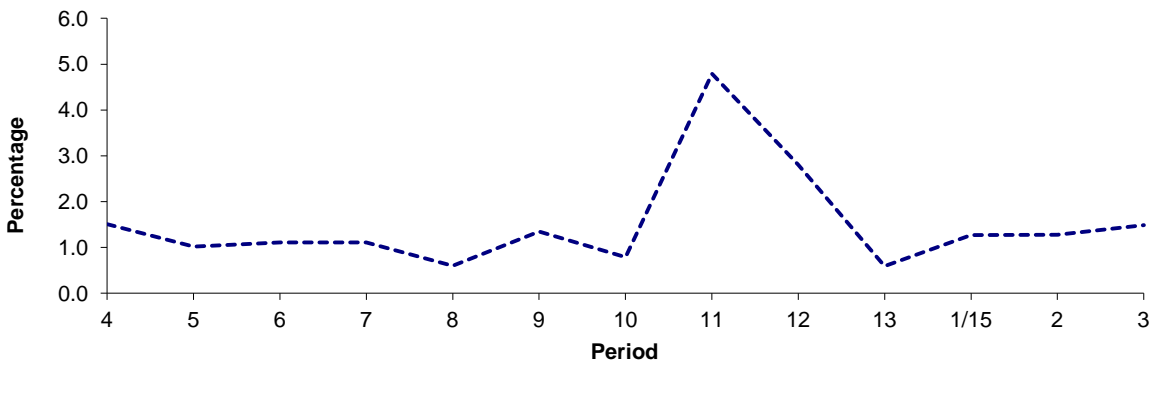
Route 42

Mileage Operated



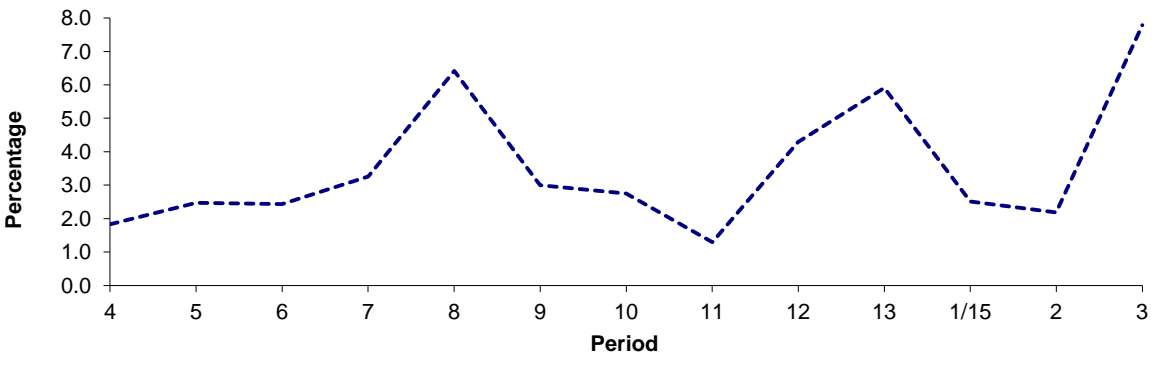
Period	4	5	6	7	8	9	10	11	12	13	1/15	2	3
2014/2015	96.66	96.51	96.46	95.63	92.98	95.65	96.46	93.92	92.90	93.50	96.22	96.54	90.72
Min Standard	98.00	98.00	98.00	98.00	98.00	98.00	98.00	98.00	98.00	98.00	98.00	98.00	98.00

Deductible Mileage



Period	4	5	6	7	8	9	10	11	12	13	1/15	2	3
2014/2015	1.51	1.02	1.11	1.11	0.60	1.35	0.79	4.79	2.81	0.59	1.27	1.28	1.49

Non Deductible Mileage



Period	4	5	6	7	8	9	10	11	12	13	1/15	2	3
2014/2015	1.83	2.47	2.43	3.26	6.42	3.00	2.75	1.29	4.29	5.91	2.51	2.18	7.79

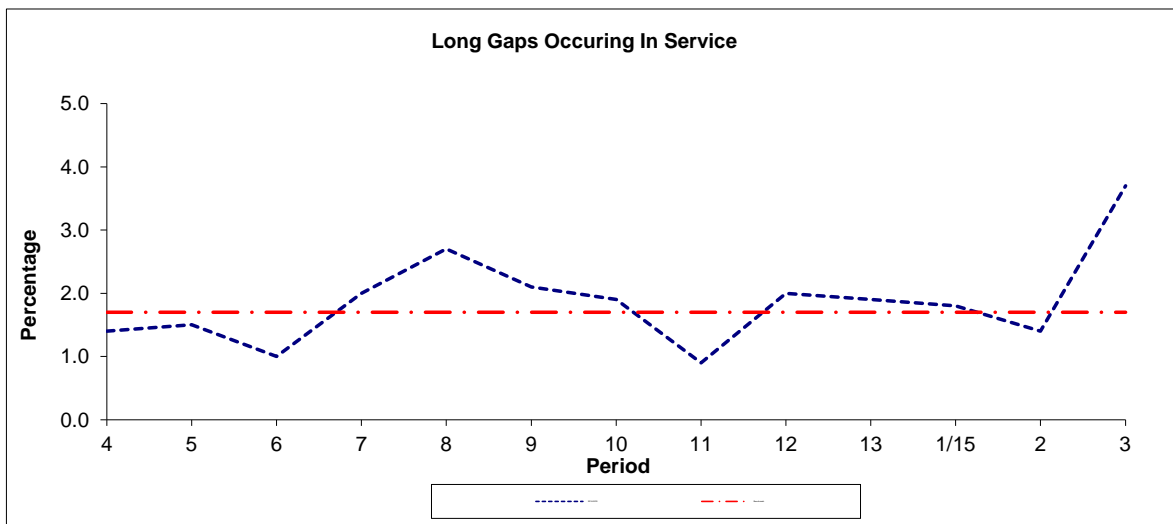
Note : Mileage is based on 4 weeks data
 Deductible Mileage was adversely affected by industrial action in periods 11 and 12 14/15.

PART B - PERFORMANCE STATISTICS

Route 42



Period	4	5	6	7	8	9	10	11	12	13	1/15	2	3
2014-2015	1.05	0.97	0.83	1.27	1.40	1.28	1.23	0.82	1.22	1.28	1.21	1.15	2.01
Min Standard	1.20	1.20	1.20	1.20	1.20	1.20	1.20	1.20	1.20	1.20	1.20	1.20	1.20



Period	4	5	6	7	8	9	10	11	12	13	1/15	2	3
2014-2015	1.4	1.5	1.0	2.0	2.7	2.1	1.9	0.9	2.0	1.9	1.8	1.4	3.7
Benchmark	1.7	1.7	1.7	1.7	1.7	1.7	1.7	1.7	1.7	1.7	1.7	1.7	1.7

Note : Reliability is actual performance under full iBus (4 weeks data).
 Minimum Standards and Benchmarks are those applicable under the new contract.

ROUTE 42 - FULL iBUS RESULTS BY TIME OF DAY
QUARTER 2 14/15 TO QUARTER 1 15/16 (21/06/14 - 26/0615)

MONDAY - FRIDAY

Time Range	Expected Buses	Observed Buses	Observed Buses (%)	SWT (mins)	EWT (mins)	AWT (mins)	Probability of Waiting < 10 mins (%)	Probability of Waiting 10-20 mins (%)	Probability of Waiting 20-30 mins (%)	Probability of Waiting > 30 mins (%)	Long Gaps (%)	Maximum Gap (mins)
05:00 - 07:00	18,248.	17,885	98.0	8.59	0.48	9.07	70.8	23.6	4.8	0.8	0.0	54
07:00 - 10:00	47,178.	45,567	96.6	5.09	0.88	5.97	83.9	15.0	0.9	0.1	1.0	47
10:00 - 13:00	46,983.	45,758	97.4	4.98	0.92	5.91	84.2	14.7	0.9	0.1	1.1	63
13:00 - 16:00	46,853.	44,697	95.4	5.01	1.19	6.21	80.9	17.0	1.6	0.4	2.0	72
16:00 - 19:00	46,433.	43,265	93.2	4.99	1.88	6.87	75.9	19.9	3.3	0.8	4.2	68
19:00 - 22:00	31,507.	31,194	99.0	7.12	1.13	8.25	64.0	30.1	4.7	1.1	1.6	62
22:00 - 24:00	15,333.	14,370	93.7	9.79	1.76	11.55	49.4	36.5	10.4	3.7	1.3	87
All Locations Summary	254,132.	244,912	96.4	5.60	1.24	6.84	77.4	19.4	2.6	0.6	2.0	93

SATURDAY

Time Range	Expected Buses	Observed Buses	Observed Buses (%)	SWT (mins)	EWT (mins)	AWT (mins)	Probability of Waiting < 10 mins (%)	Probability of Waiting 10-20 mins (%)	Probability of Waiting 20-30 mins (%)	Probability of Waiting > 30 mins (%)	Long Gaps (%)	Maximum Gap (mins)
05:00 - 07:00	2,642.	2,600	98.4	11.87	0.38	12.25	47.0	39.7	11.5	1.8	0.2	73
07:00 - 10:00	7,396.	7,076	95.7	7.15	0.84	8.00	70.6	26.4	2.7	0.4	0.5	64
10:00 - 13:00	10,094.	9,792	97.0	5.05	0.91	5.95	84.1	14.5	1.1	0.4	1.3	67
13:00 - 16:00	10,064.	9,495	94.3	5.00	1.49	6.49	79.7	17.2	2.5	0.7	3.2	63
16:00 - 19:00	9,619.	9,203	95.7	5.18	1.56	6.74	76.8	19.7	2.6	0.9	3.1	65
19:00 - 22:00	5,994.	5,837	97.4	8.06	1.31	9.37	57.4	34.6	6.5	1.6	1.1	63
22:00 - 24:00	3,198.	3,019	94.4	9.90	1.65	11.56	48.2	36.3	11.2	4.3	1.3	72
All Locations Summary	49,347.	47,647	96.6	6.17	1.30	7.47	74.0	21.7	3.4	1.0	2.0	77

SUNDAY AND BANK HOLIDAYS

Time Range	Expected Buses	Observed Buses	Observed Buses (%)	SWT (mins)	EWT (mins)	AWT (mins)	Probability of Waiting < 10 mins (%)	Probability of Waiting 10-20 mins (%)	Probability of Waiting 20-30 mins (%)	Probability of Waiting > 30 mins (%)	Long Gaps (%)	Maximum Gap (mins)
05:00 - 07:00	0.	19	0.0			0.00						
07:00 - 10:00	5,147.	5,018	97.5	10.10	0.46	10.56	50.3	41.7	7.1	0.8	0.1	55
10:00 - 13:00	6,739.	6,587	97.7	8.12	0.71	8.83	61.4	34.9	3.3	0.4	0.3	49
13:00 - 16:00	7,172.	6,941	96.8	7.51	1.03	8.54	62.4	33.1	3.7	0.8	0.8	51
16:00 - 19:00	6,139.	6,067	98.8	8.63	1.28	9.91	54.0	35.8	7.8	2.3	1.3	70
19:00 - 22:00	5,546.	5,361	96.7	9.71	1.61	11.32	48.5	38.5	9.7	3.3	1.3	80
22:00 - 24:00	3,666.	3,561	97.1	9.87	1.05	10.92	52.3	38.3	7.6	1.7	0.5	66
All Locations Summary	34,880.	34,172	98.0	8.66	1.08	9.74	57.1	35.4	6.0	1.5	0.8	80

ALL DAYS

Time Range	Expected Buses	Observed Buses	Observed Buses (%)	SWT (mins)	EWT (mins)	AWT (mins)	Probability of Waiting < 10 mins (%)	Probability of Waiting 10-20 mins (%)	Probability of Waiting 20-30 mins (%)	Probability of Waiting > 30 mins (%)	Long Gaps (%)	Maximum Gap (mins)
05:00 - 07:00	20,890.	20,504	98.2	8.96	0.47	9.43	68.0	25.5	5.6	0.9	0.0	73
07:00 - 10:00	59,721.	57,661	96.6	5.51	0.86	6.36	81.2	17.3	1.4	0.2	0.9	64
10:00 - 13:00	63,816.	62,137	97.4	5.35	0.90	6.25	81.6	17.0	1.2	0.2	1.0	67
13:00 - 16:00	64,089.	61,133	95.4	5.28	1.22	6.50	78.7	18.8	2.0	0.5	2.1	72
16:00 - 19:00	62,191.	58,535	94.1	5.36	1.78	7.15	73.9	21.4	3.7	1.0	3.8	70
19:00 - 22:00	43,047.	42,392	98.5	7.54	1.21	8.75	61.4	31.7	5.5	1.4	1.5	80
22:00 - 24:00	22,197.	20,950	94.4	9.81	1.65	11.46	49.6	36.7	10.2	3.5	1.2	87
All Locations Summary	338,359.	326,731	96.6	5.97	1.23	7.20	75.0	21.2	3.0	0.8	1.9	93

Transport for London - QSI Points and Live Mileage List

Route 42

Service change 37827

Date 13/09/2014

Reason for Issue

QSI Points are highlighted

OUT DIRECTION				
Timing Point Code	Stop Number	Stop Name	Metres	Miles
EDULSY	BP074	East Dulwich Sainsbury's		
	BP3227	Quorn Road	421	0.26
	BP4398	East Dulwich Station	184	0.11
EDULGG	BP574	Ondine Road	278	0.17
	BP4841	Derwent Grove	345	0.21
	1431	Dulwich Hospital	221	0.14
	13411	Townley Road	423	0.26
	R0883	Dulwich Village	367	0.23
NDULSN	646	North Dulwich Station	130	0.08
	BP1964	Elmwood Road / The Charter School	299	0.19
	BP1965	Casino Avenue	231	0.14
	BP1966	Herne Hill	224	0.14
	1108	Herne Hill Road	133	0.08
	13357	Deepdene Road	249	0.15
	13396	Blanchdowne	262	0.16
	13392	Champion Hill	341	0.21
	26057	King's College Hospital	302	0.19
	2013	Coldharbour Lane	216	0.13
CAMGDH	263	Denmark Hill / Camberwell Green	214	0.13
CAMGWS	26060	Camberwell Green	177	0.11
	2616	Medlar Street	183	0.11
	2614	Wyndham Road	216	0.13
	2613	Bowyer Place	233	0.14
	658	Camberwell Road / Albany Road	121	0.08
	88	Albany Road / Camberwell Road	217	0.13
	8440	Portland Street	203	0.13
ABRDTS	8442	Albany Road / Wells Way	339	0.21
	36966	Alsace Road	478	0.30
	BP1580	East Street / Thurlow Street	324	0.20
	BP1573	Congreve Street	258	0.16
	2554	Old Kent Road / East Street	222	0.14
OKRDBAO	34158	Bricklayer's Arms	245	0.15
	34290	Bricklayer's Arms / Tower Bridge Road	497	0.31
	1209	Grange Road / Caledonian Market	212	0.13
	2584	Abbey Street	275	0.17
TBGRTS	655	Druid Street	332	0.21
	BP3446	Tower Bridge / City Hall	220	0.14
	BP3693	Tower Of London	561	0.35
	35576	Tower Gateway Station	258	0.16
	BP5945	Mansell Street	483	0.30
ALDGBT		St Botolph Street (new stop B)	426	0.26
	37641	Liverpool Street Station	612	0.38
	2114	Primrose Street	224	0.14
LVSTAS	BP3491	Appold Street	341	0.21
Total Route Mileage - Out Direction			12497	7.76
			Metres	Miles

Mileages in red font are planning estimates & not ibus calculations.

Mileages in orange font have been extracted from Route No. P13.

Mileages in tan font have been extracted from Route No. 37.

Mileages in purple font have been extracted from Route No. P4.

FINAL MILEAGE TO BE CONFIRMED.

TRANCHE 532

Extension to East Dulwich Sainsburys

Garage Reallocation MA to Q

BACK DIRECTION				
Timing Point Code	Stop Number	Stop Name	Metres	Miles
LVSTWS	BP3492	Worship Street		
	2113	Primrose Street	282	0.18
	2116	Liverpool Street Station	229	0.14
		St Botolph Street (new stop A)	612	0.38
ALDGSN		Minories (new stop F)	434	0.27
	4829	Tower Hill / Tower Gateway Station	502	0.31
	BP3692	Tower Of London	234	0.15
	651	Tower Bridge / City Hall	551	0.34
TBGRS	34232	Druid Street	300	0.19
	2581	Abbey Street	302	0.19
	34010	Grange Road / Caledonian Market	299	0.19
	4610	Bricklayer's Arms / Tower Bridge Road	176	0.11
OKRDBAO	918	Bricklayer's Arms	240	0.15
	BP1572	Congreve Street	407	0.25
	BP1571	East Street / Thurlow Street	287	0.18
	36970	Alsace Road	390	0.24
ABRDTs	8443	Albany Road / Wells Way	470	0.29
	8441	Portland Street	317	0.20
	89	Albany Road / Camberwell Road	276	0.17
	2612	Camberwell Road / Albany Road	195	0.12
	2615	Bowyer Place	185	0.11
CAMGWS	34459	Medlar Street	233	0.14
CAMGDH	26059	Denmark Hill / Camberwell Green	509	0.32
	26058	Coldharbour Lane	241	0.15
	26055	King's College Hospital	205	0.13
	13393	Champion Hill	517	0.32
	13397	Blanchdowne	221	0.14
	13398	Deepdene Road	173	0.11
	BP1974	Casino Avenue	435	0.27
	BP1975	Sunray Avenue	162	0.10
	BP1976	Elmwood Road / The Charter School	241	0.15
NDULSN	37306	North Dulwich Station	302	0.19
	13410	Townley Road	335	0.21
	1430	Dulwich Hospital	413	0.26
	BP4840	Derwent Grove	252	0.16
EDULGG	26046	Goose Green	278	0.17
	13380	Elsie Road	343	0.21
	26047	East Dulwich Station	158	0.10
EDULSY	BP074	East Dulwich Sainsbury's	352	0.22
Total Route Mileage - Back Direction			12058	7.49
			Metres	Miles

Mileages in red font are planning estimates & not ibus calculations.

Mileages in purple font have been extracted from Route No. P4

Mileages in tan font have been extracted from Route No. 37.

Mileages in orange font have been extracted from Route No. P13.

FINAL MILEAGE TO BE CONFIRMED.