

7. Service Specification

Route: 43 & N43

Contract Reference: QC63301

This Service Specification forms section 7 of the ITT and should be read in conjunction with the ITT document, Version 1 dated 29 September 2011.

You are formally invited to tender for the provision of the bus service detailed below and in accordance with this Service Specification. Tenderers must ensure that a Compliant Tender is submitted and this will only be considered for evaluation if all parts of the Tender documents, as set out in section 11, have been received by the Corporation by the Date of Tender. The Tender must be fully completed in the required format, in accordance with the Instructions to Tenderers. A Compliant Tender must comply fully with the requirements of the Framework Agreement; adhere to the requirements of the Service Specification; and reflect the price of operating the Services with new vehicles.

| | |
|--|---|
| Route Number | 43 & N43 |
| Terminus Points | Friern Barnet, Library, Friern Barnet Road and London Bridge Station, Bus Station |
| Contract Basis | Incentivised |
| Commencement Date | 2 nd February 2019 |
| Vehicle Type | 87 capacity, dual door, double deck vehicles (see attached letter) |
| Current Maximum Approved Dimensions | 10.5 metres long and 2.55 metres wide |
| New Vehicles Mandatory | Yes |
| Hybrid Price Required | Yes |
| Sponsored Route | No |
| Advertising Rights | Operator |
| Minimum Performance Standard - Route No. 43 | Average Excess Wait Time - No more than 1.30 minutes |
| Extension Threshold - Route No. 43 | Average Excess Wait Time Threshold - 1.20 minutes |
| Minimum Operated Mileage Standard - Route No. 43 | No less than 98% |
| Departing On Time - Route No. N43 | Departing on Time - No less than 86% |
| Minimum Operated Mileage Standard - Route No. N43 | No less than 99% |

The Date of Tender for this ITT is: No later than 12 Noon on Monday 13th November 2017

Tenderers should refer to section 3 of Part A for the Service Specification Explanatory Notes and Appendix B of section 5 for the Example Service Specification of the ITT document.

SERVICE SPECIFICATION

- 1) SERVICE SPEC - ROUTE SPECIFICATION INFORMATION
- 2) NOTES
- 3) SCHEDULE REQUIREMENTS & PINCHPOINTS
- 4) OPERATIONAL CONSIDERATIONS
- 5) ROUTE RECORD, CURRENT PERFORMANCE, QSI BY TIME OF DAY, IBUS MILEAGE & QSI POINTS

2) NOTES

Proposed Changes:

At this time, the Corporation expects to implement a change to the existing service prior to the commencement of the new Route Agreement for Route No. 43 & N43.

- On 29th October 2017, the emergency schedules introduced on 16th August 2017 to mitigate works on Islington High Street are removed. New schedules are introduced.
- Tenderers should refer to schedules dated 15/07/2017 rather than the current emergency schedules.

Tenderers should note that there are no changes proposed as part of this Service Specification for Route No. 43 & N43.

The Mayor and Transport for London (TfL) have developed a proposal for an Ultra Low Emission Zone (ULEZ) in Central London.

The ULEZ is planned to take effect during the life of this contract and will apply 24 hours a day, 7 days a week. All double deck buses operating for TfL within the zone will be required to be hybrid (to Euro VI or better emissions standard).

- The designation Route No. N43 is used for contractual purposes only. This service will be marketed as Route No. 43. This includes all publicity, including destination blind displays.
- **Tenderers must identify the cost of the Nightly element of this service separately.**

Operators should provide the following prices:

1. **Annual diesel-electric hybrid price - based on minimum 5 year contract.**
2. **Annual electric price - based on a minimum 5 year contract. Tenders should outline the strategy they would adopt for recharging these vehicles, together with any other operational and infrastructure assumptions, within the tender submission.**

Tenders should detail the implementation strategy for electric buses. Operators must refer to the attached letter.

2) NOTES - continued

Tenderers are encouraged to offer alternative vehicle options in accordance with Part 9 of their tender, including but not limited to:

- 1. New two door, single staircase vehicles inspired by the New Routemaster in respect of both their external and internal design, to the appropriate specification agreed between TfL and the manufacturers.**
- 2. Vehicles that offer genuine increased capacity on two axles and are certified as such.**
- 3. Modifications to reduce emissions and fuel consumption (including energy storage, engine stop/start, extended zero-emission range and/or energy efficient components)**
- 4. Existing vehicles. Separate costs must be provided both excluding and including the cost of upgrading to Euro VI standards. The inclusive costs should be on a per bus per annum basis.**

Full iBus Monitoring was introduced on all night routes with effect from 1 April 2014.

Tenderers are therefore advised that on contracts where there is a night service both the day and night elements will be incentivised from the commencement of the Route Agreement in accordance with clause 46 of Annex B Terms and Conditions, using the Minimum Performance Standard(s) specified in Part 1 of the ITT.

3) SCHEDULE REQUIREMENTS & PINCHPOINTS

3.1) MONDAY TO FRIDAY SCHEDULE REQUIREMENTS & PINCHPOINTS

| | | | | | |
|--|---|-----------|--|---|------------|
| Friern Barnet, Library, Friern Barnet Road to London Bridge Station, Bus Station | | | London Bridge Station, Bus Station to Friern Barnet ,Library, Friern Barnet Road | | |
| First departure no later than 0430. | | | First departure no later than 0525. | | |
| 0425 - 0530 | Every 20 minutes | | 0520 - 0625 | Every 20 minutes | |
| 0531 - 0600 | Every 10 minutes | | 0626 - 0655 | Every 10 minutes | |
| 0601 - 0900 | Every 6-7 minutes (9 buses per hour) | | 0656 - 0900 | Every 6-7 minutes (9 buses per hour) | |
| 0901 - 1515 | Every 7-8 minutes (8 buses per hour) | | 0901 - 1401 | Every 7-8 minutes (8 buses per hour) | |
| 1516 - 1830 | Every 6-7 minutes (9 buses per hour) | | 1401 - 1945 | Every 6-7 minutes (9 buses per hour) | |
| 1831 - 1930 | Every 10 minutes | | 1946 - 2115 | Every 10 minutes | |
| 1931 - 2335 | Every 12 minutes | | 2116 - 0030 | Every 12 minutes | |
| Last departure no earlier than 2330. | | | Last departure no earlier than 0025. | | |
| Pinchpoints | | | | | |
| Highbury & Islington Station | 0730 - 0855 | 7 minutes | Highgate Station, Woodman | 0725 - 0745 | 10 minutes |
| | 1515 - 1630 | 7 minutes | | 0746 - 0900 | 7 minutes |
| | | | | 1500 - 1630 | 7 minutes |

3.2) SATURDAY AND GOOD FRIDAY SCHEDULE REQUIREMENTS & PINCHPOINTS

| | | | | | |
|--|---|-----------|--|---|------------|
| Friern Barnet, Library, Friern Barnet Road to London Bridge Station, Bus Station | | | London Bridge Station, Bus Station to Friern Barnet ,Library, Friern Barnet Road | | |
| First departure no later than 0430. | | | First departure no later than 0525. | | |
| 0425 - 0530 | Every 20 minutes | | 0520 - 0625 | Every 20 minutes | |
| 0531 - 0700 | Every 15 minutes | | 0626 - 0755 | Every 15 minutes | |
| 0701 - 0800 | Every 12 minutes | | 0756 - 0855 | Every 12 minutes | |
| 0801 - 0900 | Every 10 minutes | | 0856 - 0955 | Every 10 minutes | |
| 0901 - 1730 | Every 7-8 minutes (8 buses per hour) | | 0956 - 1910 | Every 7-8 minutes (8 buses per hour) | |
| 1731 - 1830 | Every 10 minutes | | 1911 - 2000 | Every 10 minutes | |
| 1831 - 2335 | Every 12 minutes | | 2001 - 0030 | Every 12 minutes | |
| Last departure no earlier than 2330. | | | Last departure no earlier than 0025. | | |
| Pinchpoints | | | | | |
| Highbury & Islington Station | 0935 - 1135 | 8 minutes | Highgate Station, Woodman | 0940 - 1050 | 10 minutes |
| | | | | 1051 - 1130 | 8 minutes |

3) SCHEDULE REQUIREMENTS & PINCHPOINTS - continued

3.3) SUNDAY AND PUBLIC HOLIDAYS (EXCEPT GOOD FRIDAY AND CHRISTMAS DAY) SCHEDULE REQUIREMENTS & PINCHPOINTS

| | | | | | |
|--|------------------|--|---------------------------|-------------|------------|
| Friern Barnet, Library, Friern Barnet Road to London Bridge Station, Bus Station | | London Bridge Station, Bus Station to Friern Barnet ,Library, Friern Barnet Road | | | |
| First departure no later than 0430. | | First departure no later than 0525. | | | |
| 0425 - 0630 | Every 20 minutes | 0520 - 0725 | Every 20 minutes | | |
| 0631 - 0800 | Every 15 minutes | 0726 - 0855 | Every 15 minutes | | |
| 0801 - 0845 | Every 12 minutes | 0856 - 0955 | Every 12 minutes | | |
| 0846 - 1825 | Every 10 minutes | 0956 - 1945 | Every 10 minutes | | |
| 1826 - 2335 | Every 12 minutes | 1946 - 0030 | Every 12 minutes | | |
| Last departure no earlier than 2330. | | Last departure no earlier than 0025. | | | |
| Pinchpoints | | | | | |
| Highbury & Islington Station | 1000 - 1130 | 10 minutes | Highgate Station, Woodman | 1035 - 1205 | 10 minutes |

Tenderers must identify the cost of the Boxing Day element of this service separately.

3.4) NIGHTLY

| | | | | | |
|--|------------------|--|------------------|--|--|
| Friern Barnet, Library, Friern Barnet Road to London Bridge Station, Bus Station | | London Bridge Station, Bus Station to Friern Barnet ,Library, Friern Barnet Road | | | |
| First departure no later than 2400. | | First departure no later than 0055. | | | |
| 2355 - 0405 | Every 30 minutes | 0050 - 0500 | Every 30 minutes | | |
| Last departure no earlier than 0400. | | Last departure no earlier than 0455. | | | |

Tenderers must identify the cost of the Nightly element of this service separately.

4) OPERATIONAL CONSIDERATIONS

- 4.1) Route No. 43 should interwork with Route No. N43 to form a seamless 24 hour service.
- 4.2) Football matches and events at the Emirates Stadium can also cause traffic congestion in the Holloway Road area.
- 4.3) The Elizabeth Line will connect the City, Canary Wharf, the West End and Heathrow Airport to commuter areas east and west of the capital. Major construction of the railway began in 2010, with the first services expected to commence through the central London tunnelled section in late 2018. The full Elizabeth Line service will be operating from Heathrow and Reading to Abbey Wood and Shenfield in late 2019. The construction impacts of the Elizabeth Line could affect Route No's. 43 & N43. There is potential for a change in passenger demand once the line becomes fully operational. A review, post opening of the Elizabeth Line, will be undertaken if required.
- 4.4) TfL are proposing to revise the highway layout at Highbury Corner in 2018. The scheme proposes to convert the gyratory to two-way operation and to pedestrianise the western arm. Any changes will be discussed with the successful tender.

5) ROUTE RECORD, CURRENT PERFORMANCE, QSI BY TIME OF DAY, IBUS MILEAGE & QSI POINTS

- 5.1) ROUTE RECORD
As per Busnet printout.
- 5.2) CURRENT PERFORMANCE
As per current print out.
- 5.3) QSI BY TIME OF DAY
As per current print out.
- 5.4) IBUS MILEAGE & QSI POINTS
As per current print out.

LONDON BUSES - ROUTE DESCRIPTION

ROUTE 43: Friern Barnet, Library - London Bridge Station (24 hour service)

Date of Structural Change: 2 February 2019.

Date of Service Change: 2 February 2019.

Reason for Issue: New Tender.

STREETS TRAVERSED

Towards London Bridge Station: Slip Road, Friern Barnet Road, Colney Hatch Lane, Muswell Hill Broadway (North And South Arms), Muswell Hill Road, Archway Road, St John's Way, Sandridge Street, Holloway Road, Highbury Corner, Upper Street, Islington High Street, City Road, Old Street Roundabout, City Road, Finsbury Square (West Side), Finsbury Pavement, Moorgate, Princes Street, Mansion House Street, Lombard Street, King William Street, London Bridge, Railway Approach, Bay C.

Towards Friern Barnet, Library: Bay C, London Bridge Bus Station, London Bridge Street, Borough High Street, King William Street, Lombard Street, Mansion House Street, Princes Street, Moorgate, Finsbury Pavement, Finsbury Square (West Side), City Road, Old Street Roundabout, City Road, City Road Bus Lane Slip Road, City Road, Islington High Street, Upper Street, Highbury Corner, Holloway Road, St John's Way, Archway Road, Muswell Hill Road, Muswell Hill Broadway (North and South Arms), Colney Hatch Lane, Friern Barnet Road, Slip Road.

AUTHORISED STANDS, CURTAILMENT POINTS, & BLIND DESCRIPTIONS

Please note that only stands, curtailment points, & blind descriptions as detailed in this contractual document may be used.

FRIERN BARNET, LIBRARY, FRIERN BARNET ROAD

Private stand for three buses in slip road in housing development on south side of Friern Barnet Road adjacent to Shapwick Close, opposite Friern Barnet Library.

Buses proceed from Slip Road direct to stand, departing to Slip Road. Set down in Slip Road, at Stop FA (BP3120 - Halliwick Park, Last Stop on LOR: BP3120 - Halliwick Park) and pick up in Slip Road, at Stop FA (BP3120 - Halliwick Park, First Stop on LOR: BP3120 - Halliwick Park).

| | |
|-------------------------|--|
| AVAILABILITY: | At any time. |
| OPERATING RESTRICTIONS: | No more than 3 buses on Route 43 should be scheduled to stand at any one time. |
| MEAL RELIEFS: | No meal relief vehicles to stand at any time. |
| FERRY VEHICLES: | No ferry vehicles to park on stand at any time. |
| BLIND DISPLAY: | Friern Barnet. |
| OTHER INFORMATION: | Toilet facilities available - 24 hours. |

MUSWELL HILL BROADWAY

From Friern Barnet, Library.

Buses proceed from Muswell Hill Broadway departing to Muswell Hill Broadway. Set down in Muswell Hill Broadway, at Stop B (1145 - Muswell Hill, Last Stop on LOR: 1145 - Muswell Hill) and pick up in Muswell Hill Broadway, at Stop A (1146 - Queens Avenue, First Stop on LOR: 1146 - Queens Avenue).

From London Bridge Station.

Buses proceed from Muswell Hill Broadway departing to Muswell Hill Broadway. Set down in Muswell Hill Broadway, at Stop F (1147 - Muswell Hill, Last Stop on LOR: 1147 - Muswell Hill) and pick up in Muswell Hill Broadway, at Stop E (1148 - Queens Avenue, First Stop on LOR: 1148 - Queens Avenue).

| | |
|-------------------------|--|
| AVAILABILITY: | At any time. |
| OPERATING RESTRICTIONS: | Turning Point Only - Buses must not stand |
| BLIND DISPLAY: | Muswell Hill. |

MUSWELL HILL BROADWAY

Public stand for two buses on east side of Alexandra Palace Way, opposite Buckingham Lodge commencing 41 metres north of the centre of Priory Road and extending 19 metres north.

From Friern Barnet, Library.

Buses proceed from Muswell Hill Broadway via Muswell Hill and Alexandra Palace Way to stand, departing via Alexandra Palace Way and Muswell Hill to Muswell Hill Broadway. Set down in Muswell Hill Broadway, at Stop B (1145 - Muswell Hill, Last Stop on LOR: 1145 - Muswell Hill) and pick up in Muswell Hill Broadway, at Stop A (1146 - Queens Avenue, First Stop on LOR: 1146 - Queens Avenue).

From London Bridge Station.

Buses proceed from Muswell Hill Broadway via Muswell Hill and Alexandra Palace Way to stand, departing via Alexandra Palace Way and Muswell Hill to Muswell Hill Broadway. Set down in Muswell Hill Broadway, at Stop F (1147 - Muswell Hill, Last Stop on LOR: 1147 - Muswell Hill) and pick up in Muswell Hill Broadway, at Stop E (1148 - Queens Avenue, First Stop on LOR: 1148 - Queens Avenue).

| | |
|-------------------------|---|
| AVAILABILITY: | At any time. |
| OPERATING RESTRICTIONS: | Unscheduled curtailments only |
| MEAL RELIEFS: | No meal relief vehicles to stand at any time. |
| FERRY VEHICLES: | No ferry vehicles to park on stand at any time. |
| BLIND DISPLAY: | Muswell Hill. |

ARCHWAY STATION

From Friern Barnet, Library.

Buses proceed from St John's Way via Junction Road, Vorley Road, Macdonald Road, Highgate Hill and Tollhouse Way departing to Archway Road. Set down in Junction Road, at stop W (33985 - Archway Station <>, Last Stop on LOR: 9861 - Waterlow Road) and pick up in Archway Road, at stop X (9862 - Waterlow Road, First Stop on LOR: 9862 - Waterlow Road).

From London Bridge Station.

Buses proceed from Holloway Road via Junction Road, Vorley Road, Macdonald Road, Highgate Hill, Tollhouse Way, Archway Road and St John's Way departing to Sandridge Street. Set down in Holloway Road, at stop D (BP6016 - Archway Station <>, Last Stop on LOR: BP6016 - Archway Station <>) and pick up in Sandridge Street, at stop R (BP2478 - Archway Station <> / Holloway Road, First Stop on LOR: BP2478 - Archway Station <> / Holloway Road).

| | |
|-------------------------|--|
| AVAILABILITY: | At any time. |
| OPERATING RESTRICTIONS: | Turning Point Only - Buses must not stand |
| BLIND DISPLAY: | Archway. |

HOLLOWAY, CAMDEN ROAD

Public stand for six buses on south side of Camden Road commencing 14 metres east of 29 Staveley Close extending 65 metres east.

From Friern Barnet, Library.

Buses proceed from Holloway Road via Camden Road to stand, departing via Camden Road and Parkhurst Road to Holloway Road. Set down in Holloway Road, at Stop M (26431 - Holloway / Nags Head, Last Stop on LOR: 26431 - Holloway / Nags Head) and pick up in Holloway Road, at Stop F (9850 - Tufnell Park Road, First Stop on LOR: 9850 - Tufnell Park Road).

From London Bridge Station.

Buses proceed from Holloway Road via Camden Road to stand, departing via Camden Road and Parkhurst Road to Holloway Road. Set down in Holloway Road, at Stop T (796 - Camden Road, Last Stop on LOR: 796 - Camden Road) and pick up in Holloway Road, at Stop M (26431 - Holloway / Nags Head, First Stop on LOR: 26431 - Holloway / Nags Head).

| | |
|-------------------------|---|
| AVAILABILITY: | At any time. |
| OPERATING RESTRICTIONS: | Unscheduled curtailments only. |
| MEAL RELIEFS: | No meal relief vehicles to stand at any time. |
| FERRY VEHICLES: | No ferry vehicles to park on stand at any time. |
| BLIND DISPLAY: | Holloway, Nag's Head. |

HIGHBURY & ISLINGTON STATION

Public stand for two buses on east side of Highbury Corner commencing 37 metres south of the southern kerb line of St Paul's Road and extending 22 metres north.

From Friern Barnet, Library.

Buses proceed from Holloway Road via Highbury Corner to stand, departing via Highbury Corner to Holloway Road. Set down in Holloway Road, at Stop B (10003 - Highbury & Islington Station <> #, Last Stop on LOR: 10003 - Highbury & Islington Station <> #) and pick up in Holloway Road, at Stop A (29772 - Highbury & Islington Station <> #, First Stop on LOR: 29772 - Highbury & Islington Station <> #).

From London Bridge Station.

Buses proceed from Upper Street via Highbury Corner to stand, departing via Highbury Corner to Upper Street. Set down in Upper Street, at Stop F (10002 - Highbury Corner, Last Stop on LOR: 10002 - Highbury Corner) and pick up in Upper Street, at Stop G (80001 - Upper Street / Laycock Street, First Stop on LOR: 80001 - Upper Street / Laycock Street).

| | |
|-------------------------|---|
| AVAILABILITY: | At any time. |
| OPERATING RESTRICTIONS: | Unscheduled curtailments only. |
| MEAL RELIEFS: | No meal relief vehicles to stand at any time. |
| FERRY VEHICLES: | No ferry vehicles to park on stand at any time. |
| BLIND DISPLAY: | Highbury & Islington. |

ISLINGTON, ANGEL (GOSWELL ROAD) (from Friern Barnet, Library)

Public stand on north west side of Goswell Road in two portions:

1 - for three buses, commencing opposite the part wall of no.332 and extending 30 metres north west.

2 - for two buses, commencing opposite no.356 and extending 21 metres north west.

Buses proceed from City Road via Wakley Street and Goswell Road to stand, departing via Goswell Road, City Road and Islington High Street to Upper Street. Set down in City Road, at Stop H (363 - Angel Islington / City Road, Last Stop on LOR: 363 - Angel Islington / City Road) and pick up in Upper Street, at Stop Y (25146 - Angel Station <>, First Stop on LOR: 25146 - Angel Station <>).

| | |
|-------------------------|---|
| AVAILABILITY: | At any time. |
| OPERATING RESTRICTIONS: | Unscheduled curtailments only. |
| MEAL RELIEFS: | No meal relief vehicles to stand at any time. |
| FERRY VEHICLES: | No ferry vehicles to park on stand at any time. |
| BLIND DISPLAY: | Islington Angel. |

ISLINGTON, ANGEL

Buses proceed out of service from City Road Bus Lane Slip Road. Set down in City Road Bus Lane Slip Road, at stop J (BP1079 - Angel Islington, Last Stop on LOR: BP1079 - Angel Islington).

| | |
|-------------------------|-------------------------------|
| AVAILABILITY: | At any time. |
| OPERATING RESTRICTIONS: | Unscheduled curtailments only |
| BLIND DISPLAY: | Angel. |

OLD STREET STATION

From Friern Barnet, Library.

Buses proceed from City Road via Old Street Roundabout departing to City Road. Set down in City Road, at Stop C (33263 - Old Street Station <>#, Last Stop on LOR: 33263 - Old Street Station <>#) and pick up in City Road, at Stop E (188 - Old Street Roundabout, First Stop on LOR: 188 - Old Street Roundabout).

From London Bridge Station.

Buses proceed from City Road via Old Street Roundabout departing to City Road. Set down in City Road, at Stop N (29071 - Old Street Station <> #, Last Stop on LOR: 29071 - Old Street Station <> #) and pick up in City Road, at Stop M (187 - City Road / Leonard Street, First Stop on LOR: 187 - City Road / Leonard Street).

| | |
|-------------------------|--|
| AVAILABILITY: | At any time. |
| OPERATING RESTRICTIONS: | Turning Point Only - Buses must not stand |
| BLIND DISPLAY: | Old Street Station. |

MOORGATE, FINSBURY CIRCUS (from Friern Barnet, Library)

Buses proceed from Finsbury Pavement via South Place, Eldon Street, Blomfield Street and London Wall departing to Moorgate. Set down in Finsbury Pavement, at stop K (2462 - Finsbury Square / Moorgate, Last Stop on LOR: 2462 - Finsbury Square / Moorgate) and pick up in Moorgate, at stop B (1160 - Moorgate Station <> #, First Stop on LOR: 1160 - Moorgate Station <> #).

AVAILABILITY: At any time.
OPERATING RESTRICTIONS: **Turning Point Only - Buses must not stand**
BLIND DISPLAY: Moorgate.

BANK STATION, PRINCES STREET (from Friern Barnet, Library)

Buses proceed from Princes Street via Mansion House Street, Poultry, Cheapside, New Change, Cannon Street, Queen Victoria Street and Mansion House Street departing to Princes Street. Set down in Princes Street, at stop B (BP933 - Bank Station <> / Princes Street, Last Stop on LOR: BP933 - Bank Station <> / Princes Street) and pick up in Princes Street, at stop A (2468 - Bank Station <> / Princes Street, First Stop on LOR: 2468 - Bank Station <> / Princes Street).

AVAILABILITY: At any time.
OPERATING RESTRICTIONS: **Turning Point Only - Buses must not stand**
BLIND DISPLAY: Bank Station.

LONDON BRIDGE BUS STATION, STAND C

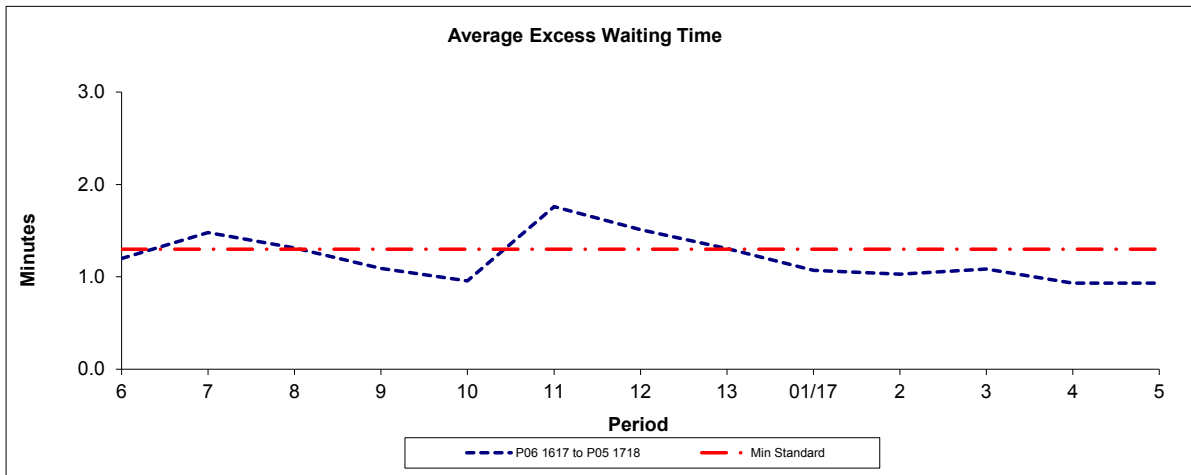
Private stand for three buses on routes 43 and 141 in Bay C in Bus Station on forecourt of London Bridge Station.

Buses proceed from Bay C direct to stand, departing to Bay C. Set down in Bay C, at Stop C (BP5681 - London Bridge Station # <>, Last Stop on LOR: BP5681 - London Bridge Station # <>) and pick up in Bay C, from Stop C (BP5681 - London Bridge Station # <>, First Stop on LOR: BP5681 - London Bridge Station # <>).

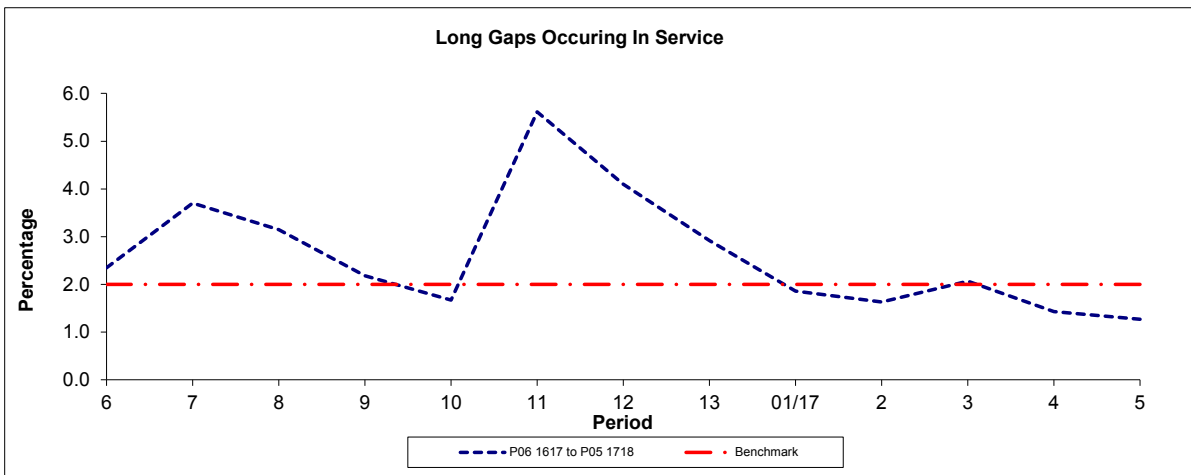
AVAILABILITY: At any time.
OPERATING RESTRICTIONS: No more than 2 buses on Route 43 should be scheduled to stand at any one time.
MEAL RELIEFS: No meal relief vehicles to stand at any time.
FERRY VEHICLES: No ferry vehicles to park on stand at any time.
BLIND DISPLAY: London Bridge.
OTHER INFORMATION: Toilet facilities available - 24 hours.

PART B - PERFORMANCE STATISTICS

Route 43



| Period | 6 | 7 | 8 | 9 | 10 | 11 | 12 | 13 | 01/17 | 2 | 3 | 4 | 5 |
|----------------------|------|------|------|------|------|------|------|------|-------|------|------|------|------|
| P06 1617 to P05 1718 | 1.20 | 1.48 | 1.31 | 1.09 | 0.96 | 1.76 | 1.51 | 1.31 | 1.07 | 1.03 | 1.08 | 0.93 | 0.93 |
| Min Standard | 1.30 | 1.30 | 1.30 | 1.30 | 1.30 | 1.30 | 1.30 | 1.30 | 1.30 | 1.30 | 1.30 | 1.30 | 1.30 |



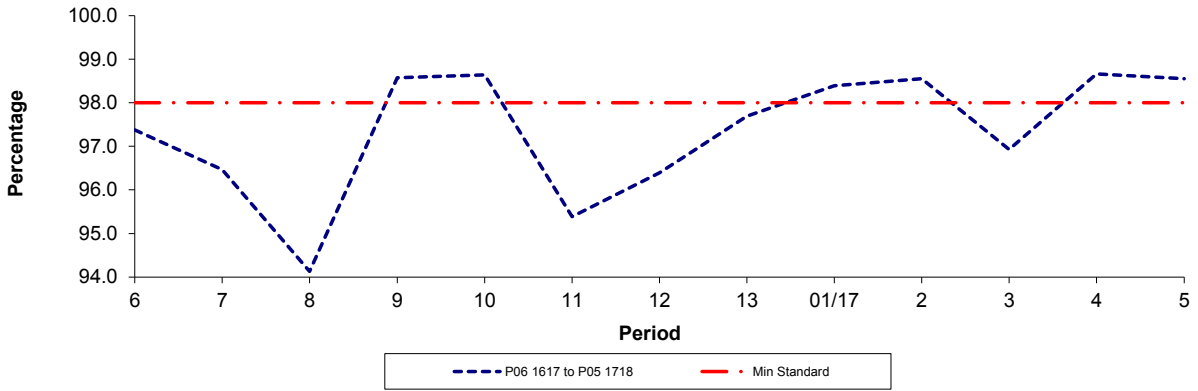
| Period | 6 | 7 | 8 | 9 | 10 | 11 | 12 | 13 | 01/17 | 2 | 3 | 4 | 5 |
|----------------------|-----|-----|-----|-----|-----|-----|-----|-----|-------|-----|-----|-----|-----|
| P06 1617 to P05 1718 | 2.3 | 3.7 | 3.1 | 2.2 | 1.7 | 5.6 | 4.1 | 2.9 | 1.9 | 1.6 | 2.1 | 1.4 | 1.3 |
| Benchmark | 2.0 | 2.0 | 2.0 | 2.0 | 2.0 | 2.0 | 2.0 | 2.0 | 2.0 | 2.0 | 2.0 | 2.0 | 2.0 |

Note : Reliability is actual performance under full iBus (4 weeks data).
Minimum Standards and Benchmarks are those applicable under the new contract.

PART B - PERFORMANCE STATISTICS

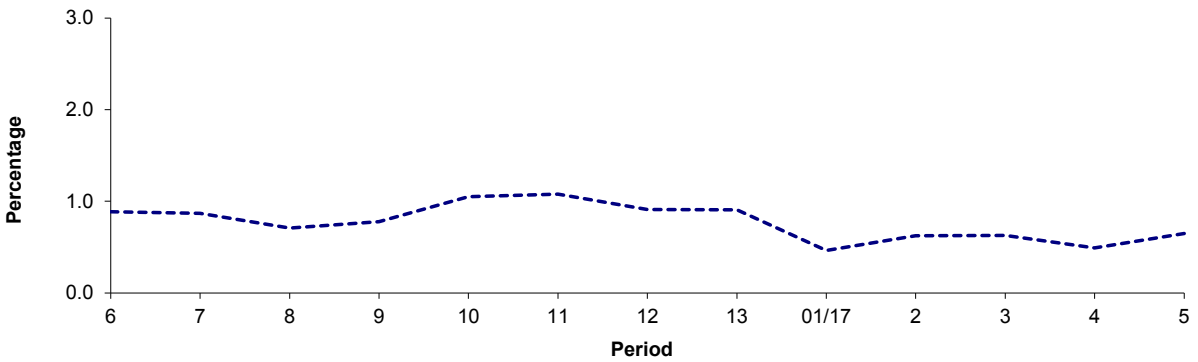
Route 43

Mileage Operated



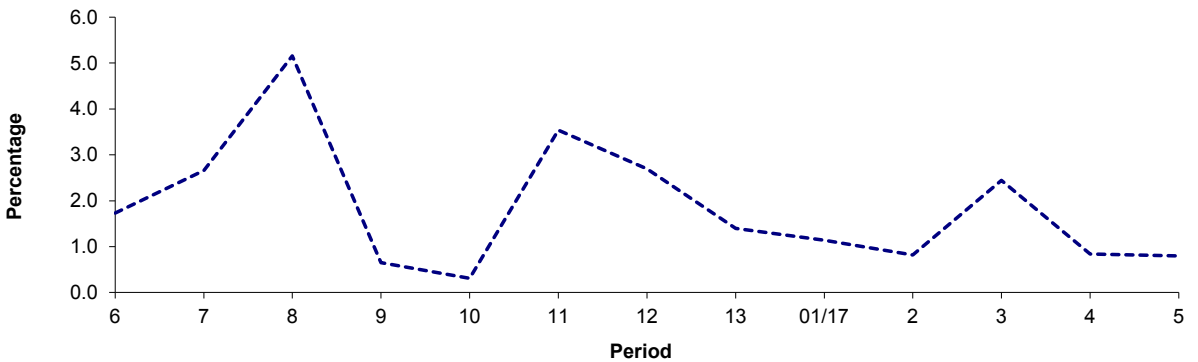
| Period | 6 | 7 | 8 | 9 | 10 | 11 | 12 | 13 | 01/17 | 2 | 3 | 4 | 5 |
|----------------------|-------|-------|-------|-------|-------|-------|-------|-------|-------|-------|-------|-------|-------|
| P06 1617 to P05 1718 | 97.38 | 96.47 | 94.13 | 98.57 | 98.64 | 95.38 | 96.39 | 97.69 | 98.39 | 98.56 | 96.93 | 98.67 | 98.55 |
| Min Standard | 98.00 | 98.00 | 98.00 | 98.00 | 98.00 | 98.00 | 98.00 | 98.00 | 98.00 | 98.00 | 98.00 | 98.00 | 98.00 |

Deductible Mileage



| Period | 6 | 7 | 8 | 9 | 10 | 11 | 12 | 13 | 01/17 | 2 | 3 | 4 | 5 |
|----------------------|------|------|------|------|------|------|------|------|-------|------|------|------|------|
| P06 1617 to P05 1718 | 0.89 | 0.87 | 0.71 | 0.78 | 1.05 | 1.08 | 0.91 | 0.91 | 0.46 | 0.62 | 0.63 | 0.49 | 0.65 |

Non-deductible Mileage



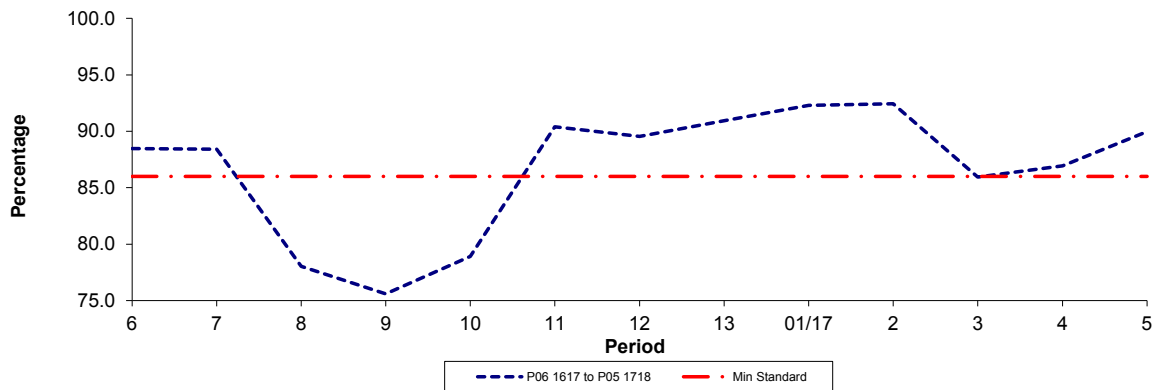
| Period | 6 | 7 | 8 | 9 | 10 | 11 | 12 | 13 | 01/17 | 2 | 3 | 4 | 5 |
|----------------------|------|------|------|------|------|------|------|------|-------|------|------|------|------|
| P06 1617 to P05 1718 | 1.74 | 2.66 | 5.16 | 0.65 | 0.31 | 3.54 | 2.70 | 1.40 | 1.14 | 0.82 | 2.44 | 0.84 | 0.80 |

Note: Mileage is based on 4 weeks data

PART B - PERFORMANCE STATISTICS

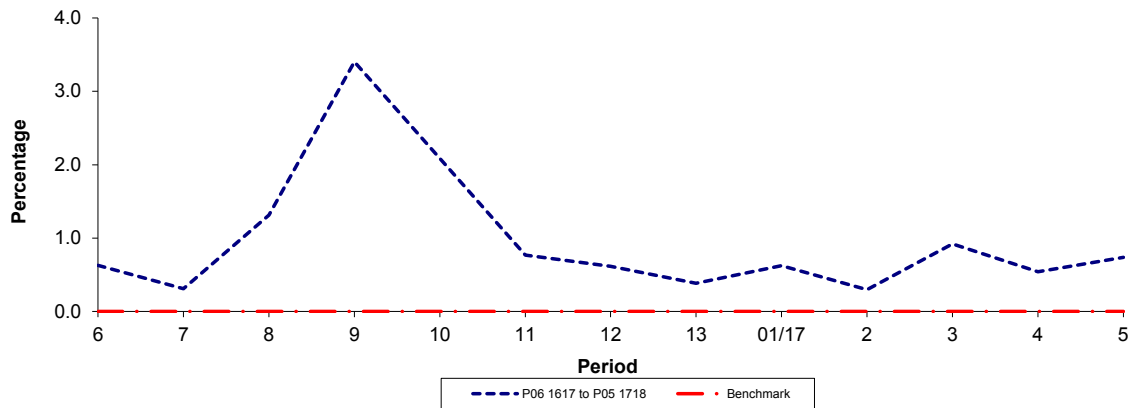
Route N43

Departing On Time



| Period | 6 | 7 | 8 | 9 | 10 | 11 | 12 | 13 | 01/17 | 2 | 3 | 4 | 5 |
|----------------------|------|------|------|------|------|------|------|------|-------|------|------|------|------|
| P06 1617 to P05 1718 | 88.5 | 88.4 | 78.0 | 75.6 | 78.9 | 90.4 | 89.6 | 90.9 | 92.3 | 92.4 | 86.0 | 86.9 | 90.0 |
| Min Standard | 86.0 | 86.0 | 86.0 | 86.0 | 86.0 | 86.0 | 86.0 | 86.0 | 86.0 | 86.0 | 86.0 | 86.0 | 86.0 |

Departing Early



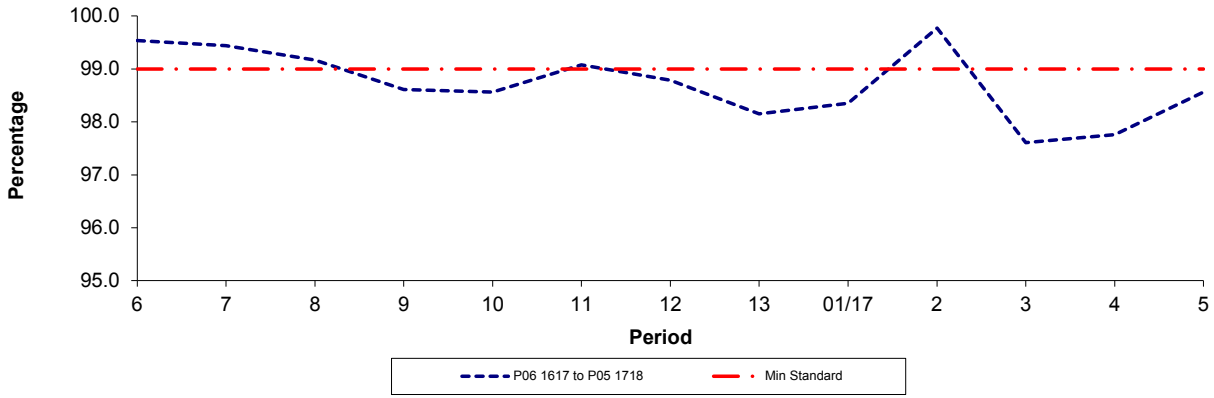
| Period | 6 | 7 | 8 | 9 | 10 | 11 | 12 | 13 | 01/17 | 2 | 3 | 4 | 5 |
|----------------------|-----|-----|-----|-----|-----|-----|-----|-----|-------|-----|-----|-----|-----|
| P06 1617 to P05 1718 | 0.6 | 0.3 | 1.3 | 3.4 | 2.1 | 0.8 | 0.6 | 0.4 | 0.6 | 0.3 | 0.9 | 0.5 | 0.7 |
| Benchmark | 0.0 | 0.0 | 0.0 | 0.0 | 0.0 | 0.0 | 0.0 | 0.0 | 0.0 | 0.0 | 0.0 | 0.0 | 0.0 |

Note : Reliability is actual performance under full iBus (4 weeks data).
Minimum Standards and Benchmarks are those applicable under the new contract.

PART B - PERFORMANCE STATISTICS

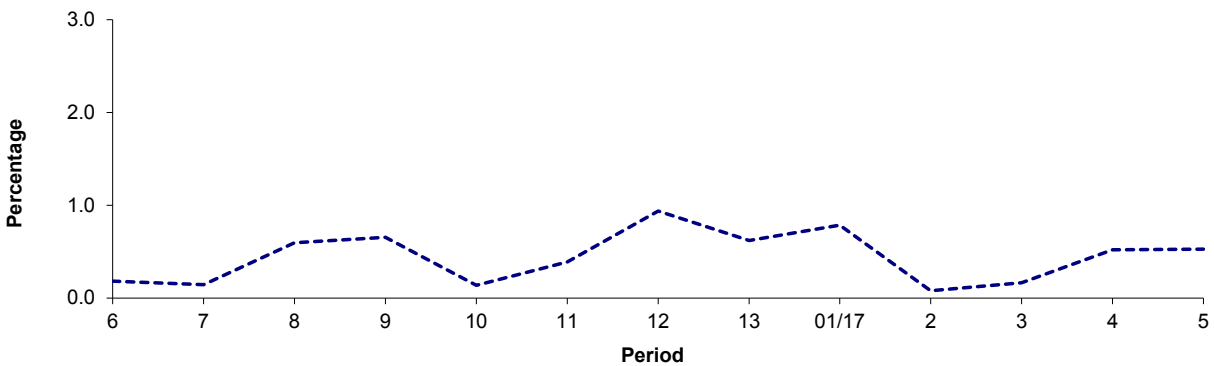
Route N43

Mileage Operated



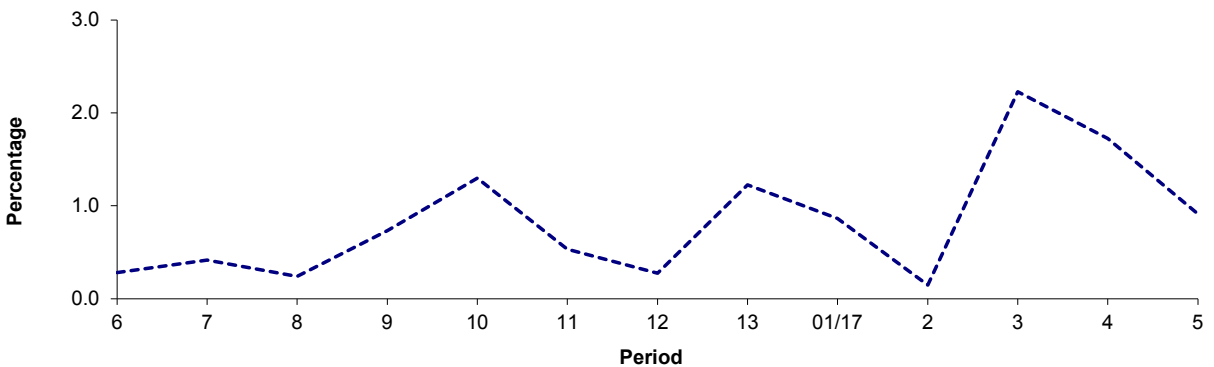
| Period | 6 | 7 | 8 | 9 | 10 | 11 | 12 | 13 | 01/17 | 2 | 3 | 4 | 5 |
|----------------------|-------|-------|-------|-------|-------|-------|-------|-------|-------|-------|-------|-------|-------|
| P06 1617 to P05 1718 | 99.54 | 99.44 | 99.17 | 98.61 | 98.56 | 99.08 | 98.79 | 98.15 | 98.35 | 99.77 | 97.61 | 97.76 | 98.56 |
| Min Standard | 99.00 | 99.00 | 99.00 | 99.00 | 99.00 | 99.00 | 99.00 | 99.00 | 99.00 | 99.00 | 99.00 | 99.00 | 99.00 |

Deductible Mileage



| Period | 6 | 7 | 8 | 9 | 10 | 11 | 12 | 13 | 01/17 | 2 | 3 | 4 | 5 |
|----------------------|------|------|------|------|------|------|------|------|-------|------|------|------|------|
| P06 1617 to P05 1718 | 0.18 | 0.14 | 0.59 | 0.65 | 0.14 | 0.39 | 0.94 | 0.62 | 0.78 | 0.08 | 0.16 | 0.52 | 0.53 |

Non Deductible Mileage



| Period | 6 | 7 | 8 | 9 | 10 | 11 | 12 | 13 | 01/17 | 2 | 3 | 4 | 5 |
|----------------------|------|------|------|------|------|------|------|------|-------|------|------|------|------|
| P06 1617 to P05 1718 | 0.28 | 0.41 | 0.24 | 0.73 | 1.30 | 0.53 | 0.27 | 1.23 | 0.86 | 0.15 | 2.23 | 1.72 | 0.91 |

Note: Mileage is based on 4 weeks data

ROUTE 43 - FULL iBUS RESULTS BY TIME OF DAY
QUARTER 2 16/17 TO QUARTER 1 17/18 (25/06/16 TO 23/06/17)

MONDAY - FRIDAY

| Time Range | Expected Buses | Observed Buses | Observed Buses (%) | SWT (mins) | EWT (mins) | AWT (mins) | Probability of Waiting < 10 mins (%) | Probability of Waiting 10-20 mins (%) | Probability of Waiting 20-30 mins (%) | Probability of Waiting > 30 mins (%) | Long Gaps (%) | Maximum Gap (mins) |
|------------------------------|----------------|----------------|--------------------|-------------|-------------|-------------|--------------------------------------|---------------------------------------|---------------------------------------|--------------------------------------|---------------|--------------------|
| 05:00 - 07:00 | 43,616 | 41,512 | 95.2 | 6.44 | 0.70 | 7.14 | 79.0 | 18.6 | 2.2 | 0.1 | 0.6 | 62 |
| 07:00 - 10:00 | 134,918 | 130,231 | 96.5 | 3.28 | 1.11 | 4.39 | 92.1 | 7.4 | 0.4 | 0.1 | 2.9 | 49 |
| 10:00 - 13:00 | 119,143 | 117,136 | 98.3 | 3.65 | 1.11 | 4.76 | 90.3 | 9.1 | 0.5 | 0.1 | 2.7 | 54 |
| 13:00 - 16:00 | 118,429 | 115,629 | 97.6 | 3.64 | 1.11 | 4.75 | 90.7 | 8.8 | 0.4 | 0.1 | 2.1 | 70 |
| 16:00 - 19:00 | 137,829 | 133,759 | 97.0 | 3.16 | 1.23 | 4.39 | 92.0 | 7.5 | 0.4 | 0.1 | 3.7 | 62 |
| 19:00 - 22:00 | 96,853 | 95,114 | 98.2 | 4.42 | 1.22 | 5.64 | 83.0 | 15.7 | 1.1 | 0.2 | 2.9 | 64 |
| 22:00 - 24:00 | 47,026 | 45,563 | 96.9 | 5.85 | 1.96 | 7.81 | 69.4 | 25.2 | 4.6 | 0.8 | 2.9 | 68 |
| All Locations Summary | 697,814 | 678,944 | 97.3 | 3.74 | 1.16 | 4.90 | 89.1 | 10.1 | 0.7 | 0.1 | 2.8 | 70 |

SATURDAY

| Time Range | Expected Buses | Observed Buses | Observed Buses (%) | SWT (mins) | EWT (mins) | AWT (mins) | Probability of Waiting < 10 mins (%) | Probability of Waiting 10-20 mins (%) | Probability of Waiting 20-30 mins (%) | Probability of Waiting > 30 mins (%) | Long Gaps (%) | Maximum Gap (mins) |
|------------------------------|----------------|----------------|--------------------|-------------|-------------|-------------|--------------------------------------|---------------------------------------|---------------------------------------|--------------------------------------|---------------|--------------------|
| 05:00 - 07:00 | 6,239 | 5,944 | 95.3 | 9.00 | 0.63 | 9.63 | 58.4 | 36.6 | 4.7 | 0.3 | 0.5 | 62 |
| 07:00 - 10:00 | 18,692 | 17,595 | 94.1 | 5.39 | 1.47 | 6.86 | 76.6 | 21.1 | 2.1 | 0.2 | 1.6 | 48 |
| 10:00 - 13:00 | 24,156 | 23,667 | 98.0 | 4.02 | 1.45 | 5.47 | 85.7 | 13.2 | 0.9 | 0.2 | 2.9 | 54 |
| 13:00 - 16:00 | 23,634 | 23,052 | 97.5 | 4.02 | 1.57 | 5.59 | 84.8 | 13.6 | 1.3 | 0.2 | 3.6 | 51 |
| 16:00 - 19:00 | 23,303 | 22,355 | 95.9 | 4.03 | 1.51 | 5.54 | 85.0 | 13.6 | 1.2 | 0.2 | 3.5 | 50 |
| 19:00 - 22:00 | 18,435 | 17,521 | 95.0 | 5.21 | 1.90 | 7.11 | 72.4 | 22.9 | 3.9 | 0.8 | 4.2 | 55 |
| 22:00 - 24:00 | 10,721 | 9,671 | 90.2 | 5.88 | 2.96 | 8.84 | 64.0 | 27.0 | 7.2 | 1.8 | 5.3 | 67 |
| All Locations Summary | 125,180 | 119,805 | 95.7 | 4.58 | 1.62 | 6.20 | 80.5 | 17.0 | 2.1 | 0.4 | 3.3 | 67 |

SUNDAY AND BANK HOLIDAYS

| Time Range | Expected Buses | Observed Buses | Observed Buses (%) | SWT (mins) | EWT (mins) | AWT (mins) | Probability of Waiting < 10 mins (%) | Probability of Waiting 10-20 mins (%) | Probability of Waiting 20-30 mins (%) | Probability of Waiting > 30 mins (%) | Long Gaps (%) | Maximum Gap (mins) |
|------------------------------|----------------|----------------|--------------------|-------------|-------------|-------------|--------------------------------------|---------------------------------------|---------------------------------------|--------------------------------------|---------------|--------------------|
| 05:00 - 07:00 | 5,540 | 5,361 | 96.8 | 9.91 | 0.59 | 10.50 | 52.8 | 40.0 | 6.5 | 0.7 | 0.5 | 48 |
| 07:00 - 10:00 | 14,478 | 13,985 | 96.6 | 6.91 | 0.97 | 7.88 | 69.7 | 27.4 | 2.7 | 0.2 | 0.3 | 46 |
| 10:00 - 13:00 | 19,010 | 18,875 | 99.3 | 5.10 | 1.10 | 6.20 | 81.0 | 17.8 | 1.1 | 0.1 | 1.1 | 78 |
| 13:00 - 16:00 | 18,925 | 18,610 | 98.3 | 5.00 | 1.23 | 6.24 | 81.2 | 17.3 | 1.4 | 0.1 | 1.5 | 49 |
| 16:00 - 19:00 | 19,052 | 18,620 | 97.7 | 4.96 | 0.99 | 5.96 | 83.0 | 16.1 | 0.8 | 0.1 | 1.0 | 44 |
| 19:00 - 22:00 | 18,086 | 17,492 | 96.7 | 5.36 | 1.42 | 6.78 | 75.2 | 22.4 | 2.1 | 0.2 | 1.6 | 93 |
| 22:00 - 24:00 | 10,436 | 10,619 | 101.8 | 6.00 | 1.38 | 7.38 | 73.7 | 23.1 | 3.0 | 0.2 | 1.2 | 50 |
| All Locations Summary | 105,527 | 103,562 | 98.1 | 5.43 | 1.14 | 6.58 | 78.5 | 19.7 | 1.7 | 0.2 | 1.2 | 93 |

ALL DAYS

| Time Range | Expected Buses | Observed Buses | Observed Buses (%) | SWT (mins) | EWT (mins) | AWT (mins) | Probability of Waiting < 10 mins (%) | Probability of Waiting 10-20 mins (%) | Probability of Waiting 20-30 mins (%) | Probability of Waiting > 30 mins (%) | Long Gaps (%) | Maximum Gap (mins) |
|------------------------------|----------------|----------------|--------------------|-------------|-------------|-------------|--------------------------------------|---------------------------------------|---------------------------------------|--------------------------------------|---------------|--------------------|
| 05:00 - 07:00 | 55,395 | 52,817 | 95.3 | 6.95 | 0.68 | 7.63 | 75.1 | 22.0 | 2.8 | 0.2 | 0.6 | 62 |
| 07:00 - 10:00 | 168,088 | 161,811 | 96.3 | 3.63 | 1.13 | 4.77 | 89.7 | 9.5 | 0.7 | 0.1 | 2.7 | 49 |
| 10:00 - 13:00 | 162,309 | 159,678 | 98.4 | 3.88 | 1.17 | 5.05 | 88.4 | 10.9 | 0.7 | 0.1 | 2.5 | 78 |
| 13:00 - 16:00 | 160,988 | 157,291 | 97.7 | 3.85 | 1.19 | 5.04 | 88.8 | 10.5 | 0.7 | 0.1 | 2.3 | 70 |
| 16:00 - 19:00 | 180,184 | 174,734 | 97.0 | 3.44 | 1.24 | 4.68 | 90.2 | 9.1 | 0.5 | 0.1 | 3.4 | 62 |
| 19:00 - 22:00 | 133,374 | 130,127 | 97.6 | 4.65 | 1.35 | 6.00 | 80.5 | 17.6 | 1.7 | 0.3 | 2.9 | 93 |
| 22:00 - 24:00 | 68,183 | 65,853 | 96.6 | 5.87 | 2.07 | 7.95 | 69.0 | 25.3 | 4.9 | 0.9 | 3.1 | 68 |
| All Locations Summary | 928,521 | 902,311 | 97.2 | 4.02 | 1.22 | 5.24 | 86.9 | 11.9 | 1.0 | 0.2 | 2.7 | 93 |

ROUTE N43 - FULL iBUS RESULTS BY TIME OF DAY
QUARTER 2 16/17 TO QUARTER 1 17/18 (25/06/16 TO 23/06/17)

MONDAY - FRIDAY

| Time Range | Expected Buses | Observed Buses | Observed Buses (%) | Linked Buses (%) | On Time (%) | Non Arrival / Not Linked (%) | Early (%) | Late (%) |
|------------------------------|----------------|----------------|--------------------|------------------|-------------|------------------------------|------------|------------|
| 00:00 - 05:00 | 42,345 | 41,732 | 98.6 | 98.9 | 92.0 | 1.1 | 1.0 | 6.0 |
| All Locations Summary | 42,345 | 41,732 | 98.6 | 98.9 | 92.0 | 1.1 | 1.0 | 6.0 |

SATURDAY

| Time Range | Expected Buses | Observed Buses | Observed Buses (%) | Linked Buses (%) | On Time (%) | Non Arrival / Not Linked (%) | Early (%) | Late (%) |
|------------------------------|----------------|----------------|--------------------|------------------|-------------|------------------------------|------------|-------------|
| 00:00 - 05:00 | 14,139 | 13,923 | 98.5 | 97.5 | 83.1 | 2.7 | 0.9 | 13.3 |
| All Locations Summary | 14,139 | 13,923 | 98.5 | 97.5 | 83.1 | 2.7 | 0.9 | 13.3 |

SUNDAY AND BANK HOLIDAYS

| Time Range | Expected Buses | Observed Buses | Observed Buses (%) | Linked Buses (%) | On Time (%) | Non Arrival / Not Linked (%) | Early (%) | Late (%) |
|------------------------------|----------------|----------------|--------------------|------------------|-------------|------------------------------|------------|-------------|
| 00:00 - 05:00 | 13,246 | 13,027 | 98.3 | 97.4 | 78.7 | 2.8 | 0.9 | 17.7 |
| All Locations Summary | 13,246 | 13,027 | 98.3 | 97.4 | 78.7 | 2.8 | 0.9 | 17.7 |

ALL DAYS

| Time Range | Expected Buses | Observed Buses | Observed Buses (%) | Linked Buses (%) | On Time (%) | Non Arrival / Not Linked (%) | Early (%) | Late (%) |
|------------------------------|----------------|----------------|--------------------|------------------|-------------|------------------------------|------------|-------------|
| 00:00 - 05:00 | 69,730 | 68,682 | 98.5 | 98.3 | 86.8 | 1.9 | 0.9 | 10.4 |
| All Locations Summary | 69,730 | 68,682 | 98.5 | 98.3 | 86.8 | 1.9 | 0.9 | 10.4 |

Transport for London - QSI Points and Live Mileage List

v2.0 - Mileage directly imported from Caesar

TRANCHE 633

Route: 43/N43

Service change: 44341

Date: 20/03/2017

Version Detail

Reason for Issue: End of diversion in Moorgate

| OUT DIRECTION | | | | |
|-------------------|-------------------------------------|-------------------------------------|-------------------------------|-------|
| Timing Point Code | Stop Number | Stop Name | Metres | Miles |
| FBARLB | BP3120 | Halliwick Park | | |
| | 9947 | St John's Church | 62 | 0.04 |
| | BP3077 | Friern Barnet Town Hall | 262 | 0.16 |
| | 19610 | Friern Barnet Road | 185 | 0.11 |
| | 20146 | Hillside Avenue | 196 | 0.12 |
| CHLNLS | 19541 | North Circular Road | 485 | 0.30 |
| | 7520 | Cromwell Road | 315 | 0.20 |
| | 19607 | Pembroke Road / St Peters Church | 387 | 0.24 |
| | 1307 | Wilton Road | 237 | 0.15 |
| | BP083 | Alexandra Park Road | 458 | 0.28 |
| | 1145 | Muswell Hill | 541 | 0.34 |
| | MHILBYS | 1148 | Queens Avenue | 194 |
| 19605 | | Fortis Green Road | 297 | 0.18 |
| 9443 | | Woodside Avenue | 199 | 0.12 |
| BP2597 | | Cranley Gardens | 168 | 0.10 |
| 19604 | | Onslow Gardens | 249 | 0.15 |
| BP3116 | | Highgate Wood | 263 | 0.16 |
| 1143 | | Wood Lane / Highgate Station | 311 | 0.19 |
| 9431 | | Highgate Station | 203 | 0.13 |
| HIGHSN | 10860 | Southwood Avenue | 282 | 0.18 |
| | 1909 | Northwood Road | 277 | 0.17 |
| | 9863 | Langdon Park Road | 234 | 0.15 |
| | 9861 | Waterlow Road | 367 | 0.23 |
| | BP2478 | Archway Station / Holloway Road | 456 | 0.28 |
| ARCHHR | 9857 | Upper Holloway Station | 249 | 0.15 |
| | 9853 | Alexander Road | 528 | 0.33 |
| | 9849 | Manor Gardens | 266 | 0.17 |
| | R0055 | Seven Sisters Road / Parkhurst Road | 247 | 0.15 |
| | HOLLHR | 26431 | Holloway / Nags Head | 148 |
| 797 | | Tollington Road | 253 | 0.16 |
| 10010 | | Holloway Road Station | 496 | 0.31 |
| 1083 | | Liverpool Road | 127 | 0.08 |
| 10004 | | St Mary Magdalene Church | 385 | 0.24 |
| 10003 | | Highbury & Islington Station | 263 | 0.16 |
| HYISNS | 80001 | Upper Street / Laycock Street | 422 | 0.26 |
| | 33092 | Islington Town Hall | 232 | 0.14 |
| | 29748 | St Mary's Church | 432 | 0.27 |
| | 9995 | Islington Green | 264 | 0.16 |
| | ISLNHS | 36601 | Angel Station | 340 |
| 363 | | Angel Islington / City Road | 287 | 0.18 |
| 8369 | | Central Street | 411 | 0.26 |
| 8371 | | Windsor Terrace | 441 | 0.27 |
| 8375 | | Moorfields Eye Hospital | 188 | 0.12 |
| OLSTSN | 33263 | Old Street Station | 210 | 0.13 |
| | 187 | City Road / Leonard Street | 378 | 0.23 |
| | 2460 | Epworth Street | 175 | 0.11 |
| | FINSSQ | 2462 | Finsbury Square / Moorgate | 246 |
| 2466 | | Great Swan Alley | 475 | 0.30 |
| BANKSNP | | BP933 | Bank Station / Princes Street | 218 |
| | 14691 | King William Street / Monument Stn | 317 | 0.20 |
| LONBSNC | BP140 | Monument Station | 245 | 0.15 |
| | BP5681 | London Bridge Station | 547 | 0.34 |
| | Total Route Mileage - Out Direction | | | 15418 |
| | | | Metres | Miles |

| BACK DIRECTION | | | | |
|--------------------------------------|-------------|------------------------------------|-----------------------|-------|
| Timing Point Code | Stop Number | Stop Name | Metres | Miles |
| LONBSNC | BP5681 | London Bridge Station | | |
| | 978 | London Bridge | 363 | 0.23 |
| | 2123 | Monument Station | 324 | 0.20 |
| | 27954 | Bank Station / King William Street | 330 | 0.21 |
| BANKSNP | 2468 | Bank Station / Princes Street | 256 | 0.16 |
| | 2467 | London Wall | 279 | 0.17 |
| FINSSQ | 1160 | Moorgate Station | 222 | 0.14 |
| | 20726 | Finsbury Square | 267 | 0.17 |
| | 29071 | Old Street Station | 333 | 0.21 |
| | OLSTSN | 188 | Old Street Roundabout | 310 |
| 29930 | | Moorfields Eye Hospital | 252 | 0.16 |
| 8372 | | Windsor Terrace | 218 | 0.14 |
| 8368 | | Central Street | 456 | 0.28 |
| ISLNHS | BP1079 | Angel Islington | 440 | 0.27 |
| | 25146 | Angel Station | 353 | 0.22 |
| | 9996 | Theberton Street | 345 | 0.21 |
| | 29792 | St Mary's Church | 249 | 0.15 |
| | 26500 | Islington Town Hall | 318 | 0.20 |
| HYISNS | 10002 | Highbury Corner | 341 | 0.21 |
| | 29772 | Highbury & Islington Station | 259 | 0.16 |
| | 10005 | St Mary Magdalene Church | 276 | 0.17 |
| | 1084 | Liverpool Road | 287 | 0.18 |
| HOLLHR | 10011 | Holloway Road Station | 315 | 0.20 |
| | 796 | Camden Road | 353 | 0.22 |
| | 314 | Holloway / Nags Head | 186 | 0.12 |
| | 9850 | Tufnell Park Road | 335 | 0.21 |
| | 9852 | Manor Gardens | 248 | 0.15 |
| UHOLSN | 11328 | Wedmore Street | 300 | 0.19 |
| | 9858 | Upper Holloway Station | 313 | 0.19 |
| | BP2307 | Elthorne Road | 150 | 0.09 |
| ARCHHR | BP6016 | Archway Station | 183 | 0.11 |
| | 9862 | Waterlow Road | 499 | 0.31 |
| | 9864 | Langdon Park Road | 434 | 0.27 |
| | 1908 | Northwood Road | 276 | 0.17 |
| HIGHSN | 9432 | Highgate Station | 389 | 0.24 |
| | 1142 | Wood Lane / Highgate Station | 270 | 0.17 |
| | BP3230 | Highgate Wood | 335 | 0.21 |
| | 19603 | Onslow Gardens | 302 | 0.19 |
| | 9444 | Cranley Gardens | 235 | 0.15 |
| MHILBYS | 15599 | Fortis Green Road | 347 | 0.22 |
| | 1147 | Muswell Hill | 267 | 0.17 |
| | 1146 | Queens Avenue | 136 | 0.08 |
| | 80010 | Meadow Drive | 278 | 0.17 |
| | 1910 | Alexandra Park Road | 255 | 0.16 |
| | 1306 | Wilton Road | 362 | 0.22 |
| CHLNLS | 19606 | Pembroke Road / St Peters Church | 347 | 0.22 |
| | 7521 | Hampden Road | 211 | 0.13 |
| | 19608 | North Circular Road | 468 | 0.29 |
| | 29919 | Firs Avenue | 180 | 0.11 |
| FBARLB | 20145 | Hillside Avenue | 377 | 0.23 |
| | BP4294 | Friern Barnet Town Hall | 314 | 0.20 |
| | 8285 | St John's Church | 124 | 0.08 |
| | BP3120 | Halliwick Park | 276 | 0.17 |
| Total Route Mileage - Back Direction | | | 15543 | 9.66 |
| | | | Metres | Miles |

CONTRACT SPECIFICATION

Tenders are requested for the following contract to operate a bus service.

| | |
|---|--|
| Contract Reference | QC37401 |
| Route Number | 43/N43 |
| Terminus Points | Friern Barnet Library and London Bridge Station |
| Contract Basis | Incentivised |
| Commencement Date | 4 th February 2012 |
| Vehicle Type | 87 capacity, dual door, double deck vehicles |
| Maximum Approved Dimensions | 10.5 metres long and 2.55 metres wide |
| Advertising Rights | Operator |
| Sponsored Route | No |
| Minimum Performance Std - Route No. 43 | Average Excess Wait Time - No more than 1.20 minutes |
| Extension Threshold - Route No. 43 | Average Excess Wait Time Threshold - 1.05 minutes |
| Minimum Operated Mileage - Route No. 43 | No less than 98.00% |
| Departing on Time - Route No. N43 | No less than 85.00% |
| Minimum Operated Mileage - Route No. N43 | No less than 99.00% |

Tender Return Date: later than 12 o'clock on 7 February 2011

SERVICE SPECIFICATION

CONTENTS

- 1) NOTES
- 2) SCHEDULE REQUIREMENTS & PINCHPOINTS
- 3) QSI POINTS & MILEAGE
- 4) OPERATIONAL CONSIDERATIONS
- 5) CURRENT PERFORMANCE, ROUTE RECORD & IBUS MILEAGE

1) NOTES

Proposed Changes:

At this time, the Corporation expects to implement a change to the existing service prior to the commencement of the new Route Agreement for Route No. 43 & N43.

- The first stage of construction works at London Bridge Station bus station will commence on 3rd September 2011 and is expected to last for 7 months (until April 2012). Route Nos. 43 & N43 will stand at Nebraska Street for the duration of the works and the stops within the station will be withdrawn. The set down will be stop Y, on the south side of London Bridge and pick up will be stop M, on the south side of London Bridge.
- **Please see Section 5 for full list of streets traversed.**

Tenderers should note that there are no changes proposed as part of this Service Specification for Route No. 43 & N43.

- The designation Route No. N43 is used for contractual purposes only. This service will be marketed as Route No. 43. This includes all publicity, including destination blind displays.
- **Tenderers must identify the cost of the Nightly element of this service separately.**

2) SCHEDULE REQUIREMENTS & PINCHPOINTS

2.1) MONDAY TO FRIDAY SCHEDULE REQUIREMENTS & PINCHPOINTS

| | | | | | |
|--|---------------------------------------|-----------|--|---------------------------------------|------------|
| Friern Barnet Library to London Bridge Station | | | London Bridge Station to Friern Barnet Library | | |
| First departure no later than 0430. | | | First departure no later than 0525. | | |
| 0425 - 0530 | Every 20 minutes | | 0520 - 0625 | Every 20 minutes | |
| 0531 - 0600 | Every 10 minutes | | 0626 - 0655 | Every 10 minutes | |
| 0601 - 0715 | Every 6 minutes | | 0656 - 0850 | Every 6 minutes | |
| 0716 - 0800 | Every 5 minutes | | 0851 - 1000 | Every 5 minutes | |
| 0801 - 0900 | Every 5-6 minutes (11 buses per hour) | | 1001 - 1100 | Every 6 minutes | |
| 0901 - 1435 | Every 6-7 minutes (9 buses per hour) | | 1101 - 1600 | Every 6-7 minutes (9 buses per hour) | |
| 1436 - 1505 | Every 6 minutes | | 1601 - 1630 | Every 6 minutes | |
| 1506 - 1650 | Every 5 minutes | | 1631 - 1730 | Every 5 minutes | |
| 1651 - 1730 | Every 6 minutes | | 1731 - 1830 | Every 5-6 minutes (11 buses per hour) | |
| 1731 - 1830 | Every 7-8 minutes (8 buses per hour) | | 1831 - 1945 | Every 6 minutes | |
| 1831 - 1930 | Every 10 minutes | | 1946 - 2115 | Every 10 minutes | |
| 1931 - 2335 | Every 12 minutes | | 2116 - 0030 | Every 12 minutes | |
| Last departure no earlier than 2330. | | | Last departure no earlier than 0025. | | |
| Pinchpoints | | | | | |
| Highbury & Islington Station | 0730 - 0750 | 6 minutes | Highgate Station, Woodman | 0725 - 0745 | 10 minutes |
| | 0751 - 0845 | 5 minutes | | 0746 - 0900 | 6 minutes |
| | 1515 - 1545 | 6 minutes | | 1500 - 1630 | 7 minutes |
| | 1546 - 1630 | 5 minutes | | | |

2.2) SATURDAY AND GOOD FRIDAY SCHEDULE REQUIREMENTS & PINCHPOINTS

| | | | | | |
|--|--------------------------------------|-----------|--|--------------------------------------|------------|
| Friern Barnet Library to London Bridge Station | | | London Bridge Station to Friern Barnet Library | | |
| First departure no later than 0430. | | | First departure no later than 0525. | | |
| 0425 - 0530 | Every 20 minutes | | 0520 - 0625 | Every 20 minutes | |
| 0531 - 0700 | Every 15 minutes | | 0626 - 0755 | Every 15 minutes | |
| 0701 - 0800 | Every 12 minutes | | 0756 - 0855 | Every 12 minutes | |
| 0801 - 0900 | Every 10 minutes | | 0856 - 0955 | Every 10 minutes | |
| 0901 - 1730 | Every 7-8 minutes (8 buses per hour) | | 0956 - 1910 | Every 7-8 minutes (8 buses per hour) | |
| 1731 - 1830 | Every 10 minutes | | 1911 - 2000 | Every 10 minutes | |
| 1831 - 2335 | Every 12 minutes | | 2001 - 0030 | Every 12 minutes | |
| Last departure no earlier than 2330. | | | Last departure no earlier than 0025. | | |
| Pinchpoints | | | | | |
| Highbury & Islington Station | 0935 - 1135 | 8 minutes | Highgate Station, Woodman | 0940 - 1050 | 10 minutes |
| | | | | 1051 - 1130 | 8 minutes |

2.3) SUNDAY AND PUBLIC HOLIDAY SCHEDULE REQUIREMENTS & PINCHPOINTS

| | | | |
|--|------------------|--|--|
| Friern Barnet Library to London Bridge Station | | London Bridge Station to Friern Barnet Library | |
| First departure no later than 0430. | | First departure no later than 0525. | |
| 0425 - 0630 | Every 20 minutes | 0520 - 0725 | Every 20 minutes |
| 0631 - 0800 | Every 15 minutes | 0726 - 0855 | Every 15 minutes |
| 0801 - 0845 | Every 12 minutes | 0856 - 0955 | Every 12 minutes |
| 0846 - 1825 | Every 10 minutes | 0956 - 1945 | Every 10 minutes |
| 1826 - 2335 | Every 12 minutes | 1946 - 0030 | Every 12 minutes |
| Last departure no earlier than 2330. | | Last departure no earlier than 0025. | |
| Pinchpoints | | | |
| Highbury & Islington Station | 1000 - 1130 | 10 minutes | Highgate Station, Woodman 1035 - 1205 10 minutes |

2.4) BOXING DAY SCHEDULE REQUIREMENTS & PINCHPOINTS

| | | | |
|--|------------------|--|--|
| Friern Barnet Library to London Bridge Station | | London Bridge Station to Friern Barnet Library | |
| First departure no later than 0730. | | First departure no later than 0825. | |
| 0725 - 0800 | Every 15 minutes | 0820 - 0855 | Every 15 minutes |
| 0801 - 0845 | Every 12 minutes | 0856 - 0955 | Every 12 minutes |
| 0846 - 1825 | Every 10 minutes | 0956 - 1945 | Every 10 minutes |
| 1826 - 2335 | Every 12 minutes | 1946 - 0030 | Every 12 minutes |
| Last departure no earlier than 2330. | | Last departure no earlier than 0025. | |
| Pinchpoints | | | |
| Highbury & Islington Station | 0930 - 1230 | 10 minutes | Highgate Station, Woodman 1030 - 1130 10 minutes |

2.4) SUNDAY NIGHTS/MONDAY MORNINGS TO THURSDAY NIGHTS/FRIDAY MORNINGS

| | | | |
|--|------------------|--|------------------|
| Friern Barnet Library to London Bridge Station | | London Bridge Station to Friern Barnet Library | |
| First departure no later than 2400. | | First departure no later than 0055. | |
| 2355 - 0405 | Every 30 minutes | 0050 - 0500 | Every 30 minutes |
| Last departure no earlier than 0400. | | Last departure no earlier than 0455. | |

2.5) FRIDAY NIGHTS/SATURDAYS MORNINGS TO SATURDAYS NIGHTS/SUNDAYS MORNINGS

| | | | |
|--|------------------|--|------------------|
| Friern Barnet Library to London Bridge Station | | London Bridge Station to Friern Barnet Library | |
| First departure no later than 2350. | | First departure no later than 0045. | |
| 2345 - 0415 | Every 20 minutes | 0040 - 0510 | Every 20 minutes |
| Last departure no earlier than 0410. | | Last departure no earlier than 0505. | |

Tenderers must identify the cost of the Nightly element of this service separately.

3) QSI POINTS & MILEAGE

It is intended Route No. 43 will have 128 surveys per quarter at the following locations:

| QSI POINTS | |
|--|--------------------------------------|
| Towards London Bridge Station | Towards Friern Barnet Library |
| Friern Barnet | London Bridge |
| Muswell Hill | Finsbury Square |
| Holloway Nags Head | Islington Angel |
| Islington Angel | Muswell Hill |
| MILEAGE: See Attached iBus Sheets | |

\$ This location observed simultaneously in both directions - counted as two surveys.

It is unlikely that the minimum number of QSI surveys for Threshold measurement will be conducted on Route No. N43 at present. However, this may change at a later date when a Threshold figure may be published.

4) OPERATIONAL CONSIDERATIONS

- 4.1) Route No. 43 & N43 can suffer unpredictable traffic delays in the Holloway Road and City of London area.
- 4.2) Route No. 43 should be separated from Route No. 271 between Archway Station and Highbury & Islington Station
- 4.3) Football matches and events at Emirates Stadium can also cause traffic congestion in the Holloway Road area.
- 4.4) The first stage of construction works at London Bridge Station bus station will commence on 3rd September 2011 and is expected to last for 7 months (until April 2012). Route Nos. 43 & N43 will stand at Nebraska Street for the duration of the works and the stops within the station will be withdrawn. The set down will be stop Y, on the south side of London Bridge and pick up will be stop M, on the south side of London Bridge.
- 4.5) Signalling enhancements on the London Underground Northern Line are due to be completed in 2012. The effect of these changes on loadings will be monitored.
- 4.6) Crossrail will connect the City, Canary Wharf, the West End and Heathrow Airport to commuter areas east and west of the capital. Major construction of the railway began in 2010, with services expected to commence in 2018. The construction impacts of Crossrail could affect Route No. 43 & N43 and it is anticipated that some passenger demand for Route No. 43 & N43 would shift to this line when it opens. Route No. 43 & N43 will be reviewed closer to the opening date.

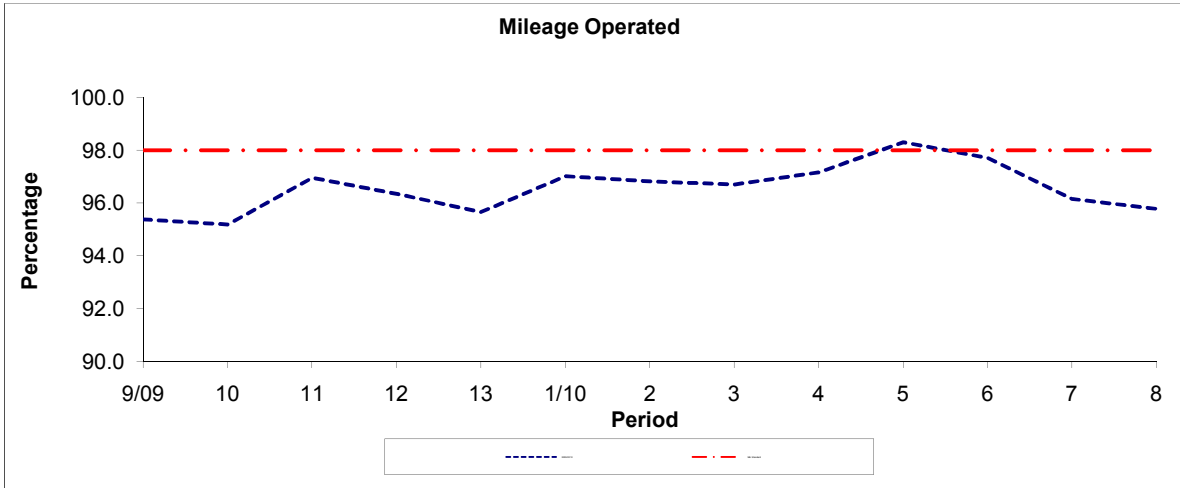
- 4.7) Crossrail works at Liverpool Street Station and Moorgate have started and will be ongoing. Long term diversions, as a result of the disruption from the works, may be expected.
- 4.8) The 2012 Olympic Games open on Friday 27th July and close on Sunday 12th August. The 2012 Paralympic Games start on Wednesday 29th August and close on Sunday 9th September. The Games will result in additional passenger demand across the network, requiring additional capacity on some routes. There will also be a number of road closures in the event areas resulting in route diversions. Operators should be aware there will be implications to them during this time. Full details and any extra resource required will be negotiated with the operator at a later date.

5) CURRENT PERFORMANCE, ROUTE RECORD & IBUS MILEAGE

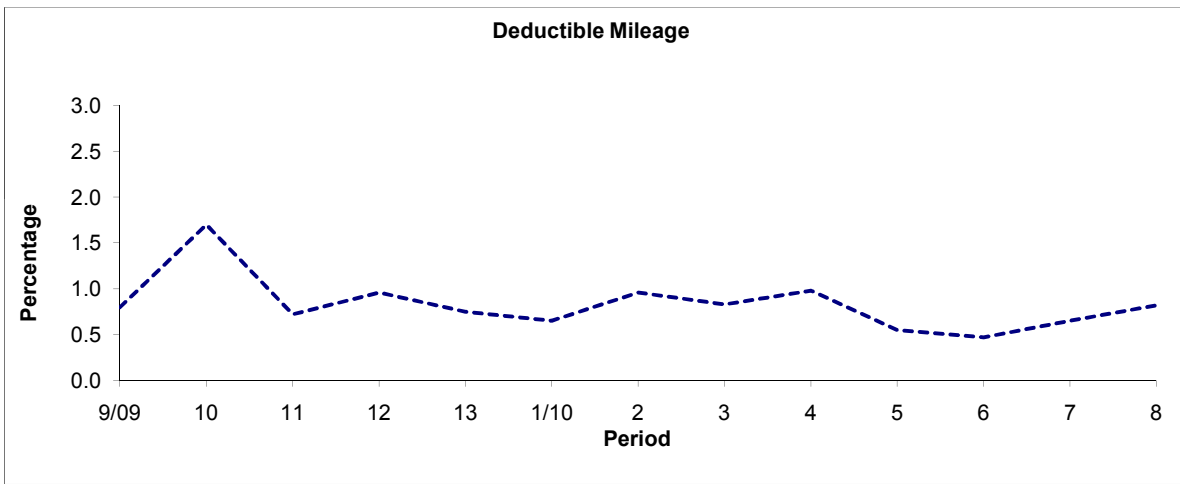
- 5.1) CURRENT PERFORMANCE
As per current print out.
- 5.2) ROUTE RECORD
As per Busnet Printout.
- 5.3) IBUS MILEAGE
As per current print out.

PART B - PERFORMANCE STATISTICS

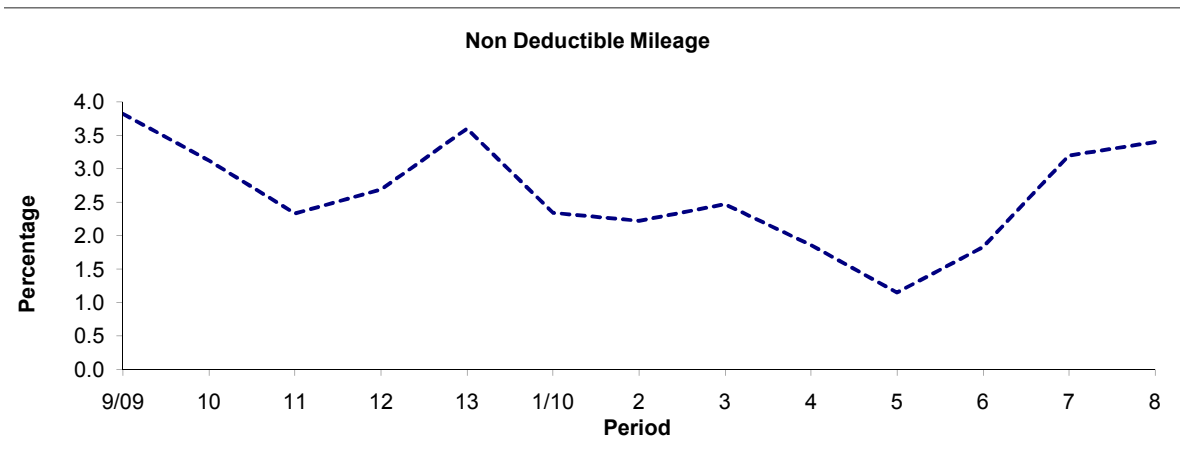
Route 43



| Period | 9/09 | 10 | 11 | 12 | 13 | 1/10 | 2 | 3 | 4 | 5 | 6 | 7 | 8 |
|--------------|-------|-------|-------|-------|-------|-------|-------|-------|-------|-------|-------|-------|-------|
| 2009/2010 | 95.38 | 95.18 | 96.95 | 96.35 | 95.65 | 97.01 | 96.82 | 96.70 | 97.16 | 98.30 | 97.70 | 96.15 | 95.78 |
| Min Standard | 98.00 | 98.00 | 98.00 | 98.00 | 98.00 | 98.00 | 98.00 | 98.00 | 98.00 | 98.00 | 98.00 | 98.00 | 98.00 |



| Period | 9/09 | 10 | 11 | 12 | 13 | 1/10 | 2 | 3 | 4 | 5 | 6 | 7 | 8 |
|-----------|------|------|------|------|------|------|------|------|------|------|------|------|------|
| 2009/2010 | 0.80 | 1.70 | 0.72 | 0.96 | 0.75 | 0.65 | 0.96 | 0.83 | 0.98 | 0.55 | 0.47 | 0.65 | 0.82 |

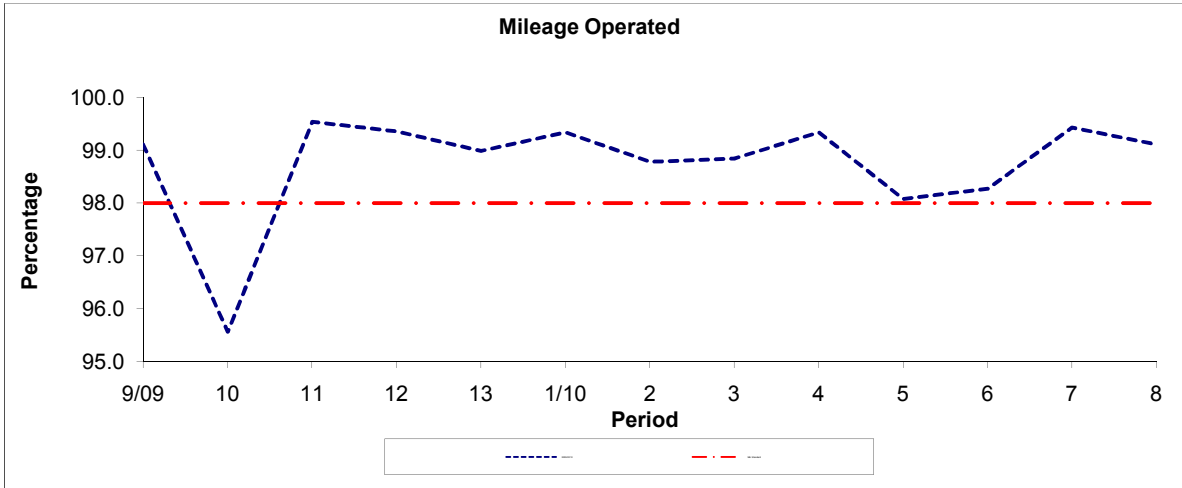


| Period | 9/09 | 10 | 11 | 12 | 13 | 1/10 | 2 | 3 | 4 | 5 | 6 | 7 | 8 |
|-----------|------|------|------|------|------|------|------|------|------|------|------|------|------|
| 2009/2010 | 3.82 | 3.12 | 2.33 | 2.69 | 3.60 | 2.34 | 2.22 | 2.47 | 1.86 | 1.15 | 1.83 | 3.20 | 3.40 |

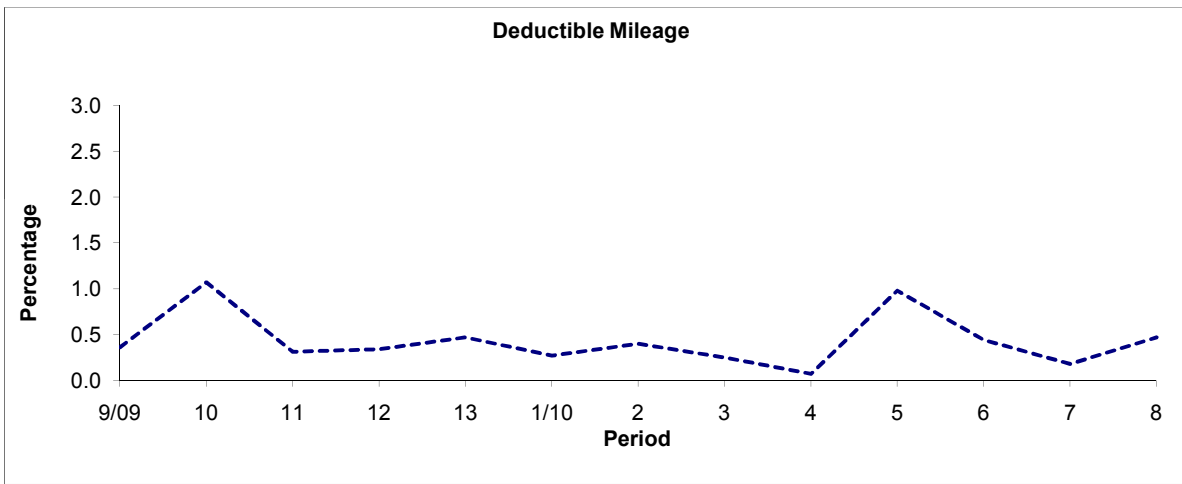
Note : Mileage is based on 4 weeks data

PART B - PERFORMANCE STATISTICS

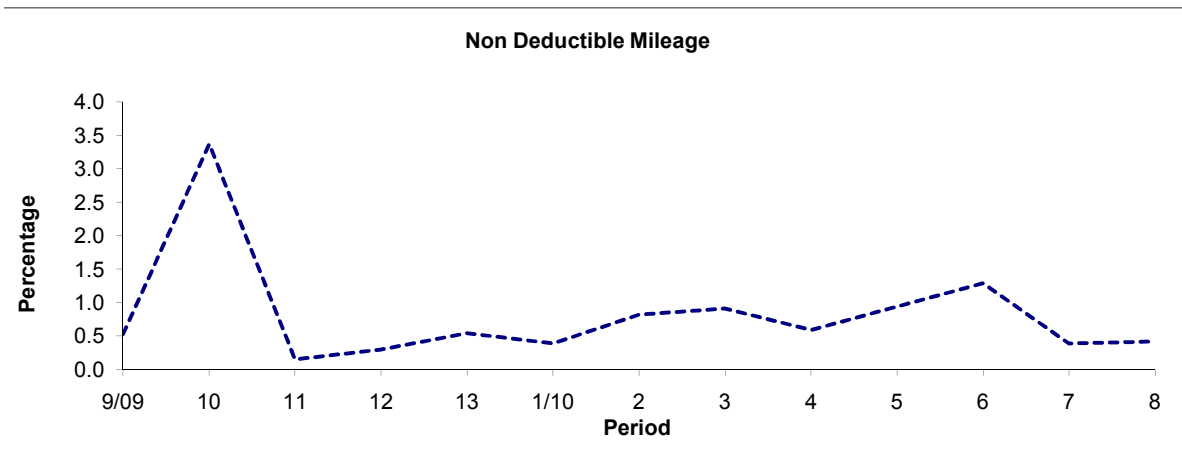
Route N43



| Period | 9/09 | 10 | 11 | 12 | 13 | 1/10 | 2 | 3 | 4 | 5 | 6 | 7 | 8 |
|--------------|-------|-------|-------|-------|-------|-------|-------|-------|-------|-------|-------|-------|-------|
| 2009/2010 | 99.11 | 95.56 | 99.54 | 99.36 | 98.99 | 99.34 | 98.78 | 98.84 | 99.34 | 98.08 | 98.27 | 99.43 | 99.11 |
| Min Standard | 98.00 | 98.00 | 98.00 | 98.00 | 98.00 | 98.00 | 98.00 | 98.00 | 98.00 | 98.00 | 98.00 | 98.00 | 98.00 |



| Period | 9/09 | 10 | 11 | 12 | 13 | 1/10 | 2 | 3 | 4 | 5 | 6 | 7 | 8 |
|-----------|------|------|------|------|------|------|------|------|------|------|------|------|------|
| 2009/2010 | 0.36 | 1.07 | 0.31 | 0.34 | 0.47 | 0.27 | 0.40 | 0.25 | 0.07 | 0.98 | 0.44 | 0.18 | 0.47 |

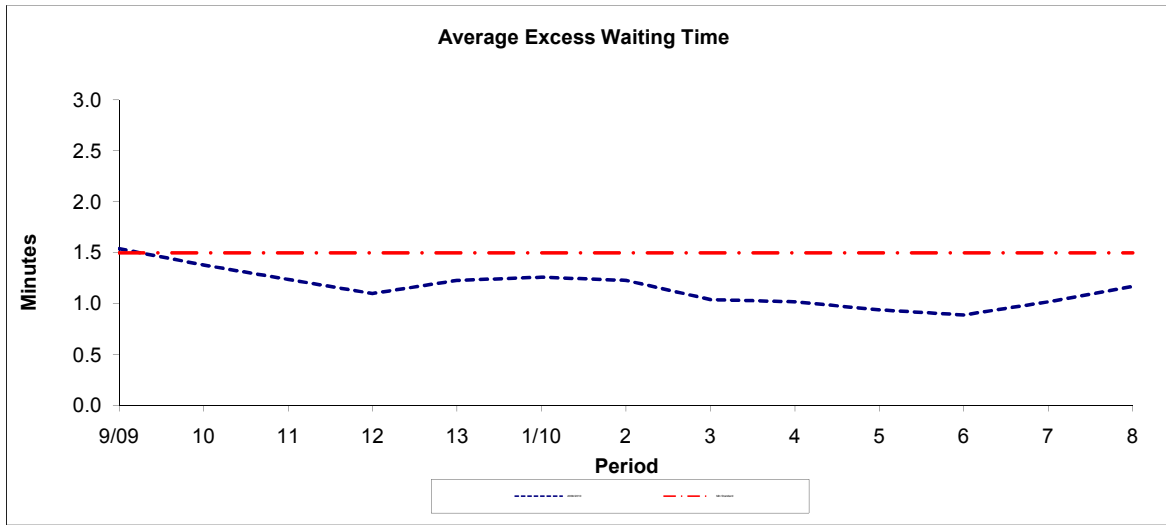


| Period | 9/09 | 10 | 11 | 12 | 13 | 1/10 | 2 | 3 | 4 | 5 | 6 | 7 | 8 |
|-----------|------|------|------|------|------|------|------|------|------|------|------|------|------|
| 2009/2010 | 0.53 | 3.37 | 0.15 | 0.30 | 0.54 | 0.39 | 0.82 | 0.91 | 0.59 | 0.94 | 1.29 | 0.39 | 0.42 |

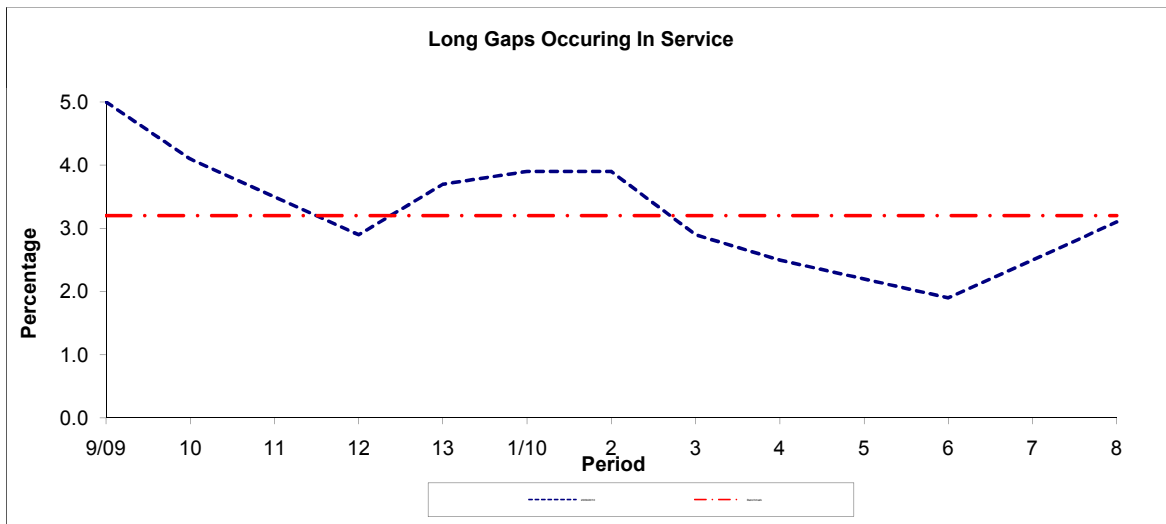
Note : Mileage is based on 4 weeks data

PART B - PERFORMANCE STATISTICS

Route 43



| Period | 9/09 | 10 | 11 | 12 | 13 | 1/10 | 2 | 3 | 4 | 5 | 6 | 7 | 8 |
|--------------|------|------|------|------|------|------|------|------|------|------|------|------|------|
| 2009/2010 | 1.54 | 1.38 | 1.24 | 1.10 | 1.23 | 1.26 | 1.23 | 1.04 | 1.02 | 0.94 | 0.89 | 1.02 | 1.17 |
| Min Standard | 1.50 | 1.50 | 1.50 | 1.50 | 1.50 | 1.50 | 1.50 | 1.50 | 1.50 | 1.50 | 1.50 | 1.50 | 1.50 |

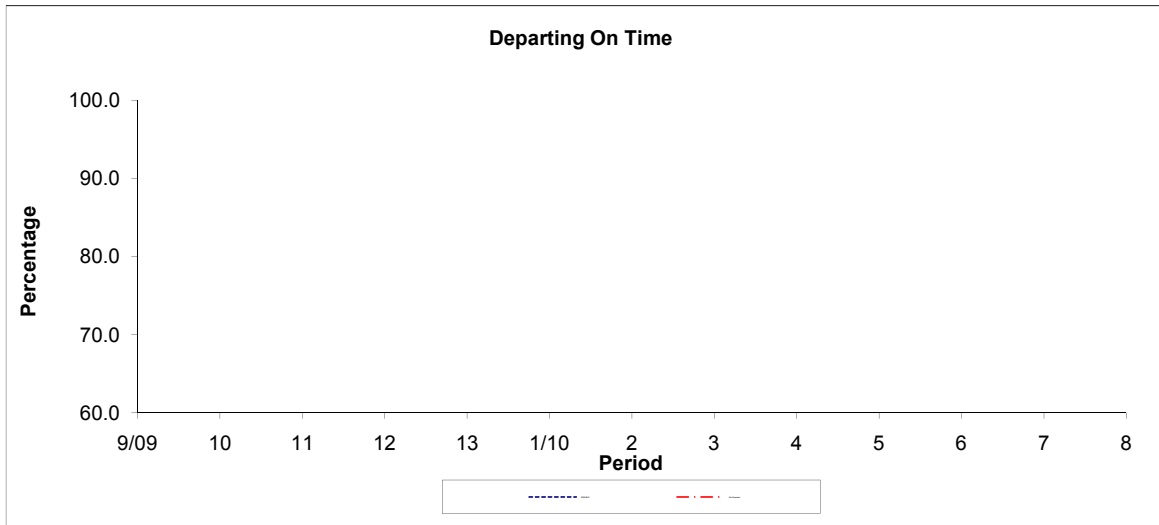


| Period | 9/09 | 10 | 11 | 12 | 13 | 1/10 | 2 | 3 | 4 | 5 | 6 | 7 | 8 |
|-----------|------|------|------|------|------|------|------|------|------|------|------|------|------|
| 2009/2010 | 5.00 | 4.10 | 3.50 | 2.90 | 3.70 | 3.90 | 3.90 | 2.90 | 2.50 | 2.20 | 1.90 | 2.50 | 3.10 |
| Benchmark | 3.20 | 3.20 | 3.20 | 3.20 | 3.20 | 3.20 | 3.20 | 3.20 | 3.20 | 3.20 | 3.20 | 3.20 | 3.20 |

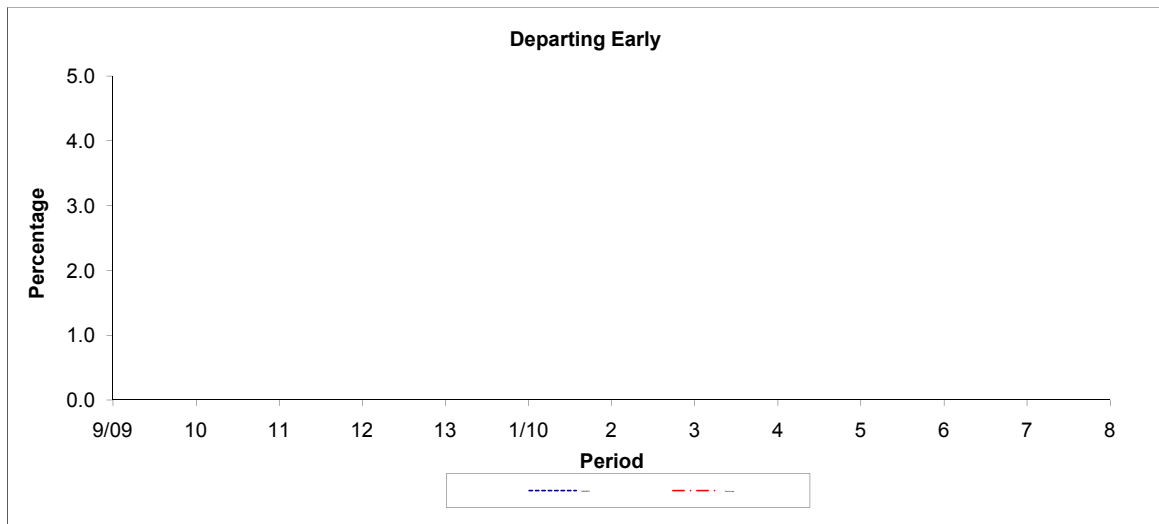
Note : Reliability is based on 12 weeks rolling data

PART B - PERFORMANCE STATISTICS

Route N43



| Period | 9/09 | 10 | 11 | 12 | 13 | 1/10 | 2 | 3 | 4 | 5 | 6 | 7 | 8 |
|--------------|------|----|----|----|----|------|---|---|---|---|---|---|---|
| 2009/2010 | | | | | | | | | | | | | |
| Min Standard | | | | | | | | | | | | | |



| Period | 9/09 | 10 | 11 | 12 | 13 | 1/10 | 2 | 3 | 4 | 5 | 6 | 7 | 8 |
|-----------|------|----|----|----|----|------|---|---|---|---|---|---|---|
| 2009/2010 | | | | | | | | | | | | | |
| Benchmark | | | | | | | | | | | | | |

Note : Reliability is based on 12 weeks rolling data
No data

LONDON BUSES - ROUTE DESCRIPTION

ROUTE 43: Friern Barnet, Library - London Bridge Station (24 hour service)

Date of Structural Change: 4 February 2012.

Date of Service Change: 4 February 2012.

Reason for Issue: New Tender.

STREETS TRAVERSED

Towards London Bridge Station: Slip Road, Friern Barnet Road, Colney Hatch Lane, Muswell Hill Broadway (North And South Arms), Muswell Hill Road, Archway Road, St John's Way, Sandridge Street, Holloway Road, Highbury Corner, Upper Street, Islington High Street, City Road, Old Street Roundabout, City Road, Finsbury Square (West Side), Finsbury Pavement, Moorgate, Princes Street, King William Street, London Bridge.

Towards Friern Barnet, Library: Borough High Street, King William Street, Princes Street, Moorgate, Finsbury Pavement, Finsbury Square (West Side), City Road, Old Street Roundabout, City Road, City Road Bus Lane Slip Road, City Road, Islington High Street, Upper Street, Highbury Corner, Holloway Road, Highgate Hill, Tollhouse Way, Archway Road, Muswell Hill Road, Muswell Hill Broadway (North and South Arms), Colney Hatch Lane, Friern Barnet Road, Slip Road.

STANDING AND TURNING POINTS

FRIERN BARNET, LIBRARY, FRIERN BARNET ROAD

Private stand for three buses in slip road in housing development on south side of Friern Barnet Road adjacent to Shapwick Close, opposite Friern Barnet Library.

Buses proceed from Slip Road direct to stand, departing to Slip Road. Set down in Slip Road, at Stop FA and pick up in Slip Road, at Stop FA.

| | |
|-------------------------|--|
| AVAILABILITY: | At any time. |
| OPERATING RESTRICTIONS: | No more than 3 buses on Route 43 should be scheduled to stand at any one time. |
| MEAL RELIEFS: | No meal relief vehicles to stand at any time. |
| FERRY VEHICLES: | No ferry vehicles to park on stand at any time. |
| DISPLAY: | Friern Barnet. |
| OTHER INFORMATION: | Toilet facilities available - 24 hours. |

MUSWELL HILL BROADWAY

From Friern Barnet, Library.

Buses proceed from Muswell Hill Broadway departing to Muswell Hill Broadway. Set down in Muswell Hill Broadway, at Stop B and pick up in Muswell Hill Broadway, at Stop A.

From London Bridge Station.

Buses proceed from Muswell Hill Broadway departing to Muswell Hill Broadway. Set down in Muswell Hill Broadway, at Stop F and pick up in Muswell Hill Broadway, at Stop E.

AVAILABILITY: At any time.
OPERATING RESTRICTIONS: **Turning Point Only - Buses must not stand**
DISPLAY: Muswell Hill.

MUSWELL HILL BROADWAY

Public stand for two buses on east side of Alexandra Palace Way, opposite Buckingham Lodge commencing 41 metres north of the centre of Priory Road and extending 19 metres north.

From Friern Barnet, Library.

Buses proceed from Muswell Hill Broadway via Muswell Hill and Alexandra Palace Way to stand, departing via Alexandra Palace Way and Muswell Hill to Muswell Hill Broadway. Set down in Muswell Hill Broadway, at Stop B and pick up in Muswell Hill Broadway, at Stop A.

From London Bridge Station.

Buses proceed from Muswell Hill Broadway via Muswell Hill and Alexandra Palace Way to stand, departing via Alexandra Palace Way and Muswell Hill to Muswell Hill Broadway. Set down in Muswell Hill Broadway, at Stop F and pick up in Muswell Hill Broadway, at Stop E.

AVAILABILITY: At any time.
OPERATING RESTRICTIONS: Unscheduled curtailments only
MEAL RELIEFS: No meal relief vehicles to stand at any time.
FERRY VEHICLES: No ferry vehicles to park on stand at any time.
DISPLAY: Muswell Hill.

ARCHWAY STATION, MACDONALD ROAD

Private stand for up to 16 buses in Bus Parking Area between east side of MacDonald Road and north side of Vorley Road.

From Friern Barnet, Library.

Buses proceed from St John's Way via Highgate Hill, Macdonald Road and Bus Parking Area to stand, departing via Bus Parking Area, Vorley Road and Junction Road to Highgate Hill. Set down in Macdonald Road, at Alighting Point and pick up in Highgate Hill, at Stop D.

From London Bridge Station.

Buses proceed from Highgate Hill via Macdonald Road and Bus Parking Area to stand, departing via Bus Parking Area, Vorley Road, Junction Road, Highgate Hill, Tollhouse Way, Archway Road and St John's Way to Sandridge Street. Set down in Highgate Hill, at Stop D and pick up in Sandridge Street, at Stop R.

| | |
|-------------------------|---|
| AVAILABILITY: | At any time. |
| OPERATING RESTRICTIONS: | Unscheduled curtailments only. |
| MEAL RELIEFS: | No meal relief vehicles to stand at any time. |
| FERRY VEHICLES: | No ferry vehicles to park on stand at any time. |
| DISPLAY: | Archway. |

HOLLOWAY, CAMDEN ROAD

Public stand for six buses on south side of Camden Road commencing 14 metres east of 29 Staveley Close extending 65 metres east.

From Friern Barnet, Library.

Buses proceed from Holloway Road via Camden Road to stand, departing via Camden Road and Parkhurst Road to Holloway Road. Set down in Holloway Road, at Stop M and pick up in Holloway Road, at Stop F.

From London Bridge Station.

Buses proceed from Holloway Road via Camden Road to stand, departing via Camden Road and Parkhurst Road to Holloway Road. Set down in Holloway Road, at Stop T and pick up in Holloway Road, at Stop M.

| | |
|-------------------------|---|
| AVAILABILITY: | At any time. |
| OPERATING RESTRICTIONS: | Unscheduled curtailments only. |
| MEAL RELIEFS: | No meal relief vehicles to stand at any time. |
| FERRY VEHICLES: | No ferry vehicles to park on stand at any time. |
| DISPLAY: | Holloway, Nag's Head. |

HIGHBURY & ISLINGTON STATION

Public stand for two buses on east side of Highbury Corner commencing 37 metres south of the southern kerb line of St Paul's Road and extending 22 metres north.

From Friern Barnet, Library.

Buses proceed from Holloway Road via Highbury Corner to stand, departing via Highbury Corner to Holloway Road. Set down in Holloway Road, at Stop B and pick up in Holloway Road, at Stop A.

From London Bridge Station.

Buses proceed from Upper Street via Highbury Corner to stand, departing via Highbury Corner to Upper Street. Set down in Upper Street, at Stop F and pick up in Upper Street, at Stop G.

| | |
|-------------------------|---|
| AVAILABILITY: | At any time. |
| OPERATING RESTRICTIONS: | Unscheduled curtailments only. |
| MEAL RELIEFS: | No meal relief vehicles to stand at any time. |
| FERRY VEHICLES: | No ferry vehicles to park on stand at any time. |
| DISPLAY: | Highbury & Islington. |

ISLINGTON, ANGEL (GOSWELL ROAD) (from Friern Barnet, Library)

Public stand on north west side of Goswell Road in two portions:

1 - for three buses, commencing opposite the part wall of no.332 and extending 30 metres north west.

2 - for two buses, commencing opposite no.356 and extending 21 metres north west.
Buses proceed from City Road via Wakley Street and Goswell Road to stand, departing via Goswell Road to City Road Bus Lane Slip Road. Set down in City Road, at Stop H and pick up in City Road Bus Lane Slip Road, at Stop J.

| | |
|-------------------------|---|
| AVAILABILITY: | At any time. |
| OPERATING RESTRICTIONS: | Unscheduled curtailments only. |
| MEAL RELIEFS: | No meal relief vehicles to stand at any time. |
| FERRY VEHICLES: | No ferry vehicles to park on stand at any time. |
| DISPLAY: | Islington Angel. |

OLD STREET STATION

From Friern Barnet, Library.

Buses proceed from City Road via Old Street Roundabout departing to City Road. Set down in City Road, at Stop C and pick up in City Road, at Stop E.

From London Bridge Station.

Buses proceed from City Road via Old Street Roundabout departing to City Road. Set down in City Road, at Stop N and pick up in City Road, at Stop M.

AVAILABILITY: At any time.
OPERATING RESTRICTIONS: **Turning Point Only - Buses must not stand**
DISPLAY: Old Street Station.

MOORGATE, FINSBURY SQUARE, EAST SIDE (from Friern Barnet, Library)

Public stand for three buses on east side of Finsbury Square, commencing 75 metres south of Christopher Street and extending 30 metres north. Buses must not obstruct the entrance to Finsbury Square House.

Buses proceed from City Road via Finsbury Square (North Side) and Finsbury Square (East Side) to stand, departing via Finsbury Square (East Side) and Finsbury Square (South Side) to Finsbury Square (West Side). Set down in City Road, at Stop E and pick up in Finsbury Square (west Side), at Stop C.

AVAILABILITY: At any time.
OPERATING RESTRICTIONS: Unscheduled curtailments only.
MEAL RELIEFS: No meal relief vehicles to stand at any time.
FERRY VEHICLES: No ferry vehicles to park on stand at any time.
DISPLAY: Moorgate, Finsbury Square.

BOROUGH STATION, NEBRASKA STREET

Public off side stand for two buses on north side of Nebraska Street commencing 11 metres east of Great Dover Street kerb line, extending 29 metres east.

Buses proceed from London Bridge via Borough High Street, Great Dover Street, Silvester Street, Tabard Street and Nebraska Street to stand, departing via Nebraska Street, Great Dover Street and Borough High Street to London Bridge. Set down in London Bridge, at Stop Y and pick up in London Bridge, at Stop M.

AVAILABILITY: At any time.
OPERATING RESTRICTIONS: No more than 2 buses on Route 43 should be scheduled to stand at any one time.
MEAL RELIEFS: No meal relief vehicles to stand at any time.
FERRY VEHICLES: No ferry vehicles to park on stand at any time.
DISPLAY: London Bridge.
OTHER INFORMATION: Toilet facilities available at Borough Station.

Transport for London - Live Mileage List

Route 43
 Service change 22940
 Date 29 September 2009

| OUT DIRECTION | | | | | |
|--|----------|-------------|--|--------|-------|
| Timing Point | Code | Stop Number | Stop Name | Metres | Miles |
| | FBARLB S | FBARLB S | Friern Barnet, Library, Friern Barnet Road | | |
| | FBARLB | BP3120 | Halliwick Park | 0 | 0.00 |
| | | 9947 | St John's Church | 82 | 0.05 |
| | | BP3077 | Friern Barnet Town Hall | 242 | 0.15 |
| | | 19610 | Friern Barnet Road | 185 | 0.11 |
| | | 20146 | Hillside Avenue | 196 | 0.12 |
| | CHLNTS | 19541 | North Circular Road | 485 | 0.30 |
| | | 7520 | Cromwell Road | 315 | 0.20 |
| | | 19607 | Pembroke Road / St Peters Church | 314 | 0.20 |
| | | 1307 | Wilton Road | 311 | 0.19 |
| | | BP083 | Alexandra Park Road | 458 | 0.28 |
| | | 1145 | Muswell Hill | 541 | 0.34 |
| | MHILBYS | 1148 | Queens Avenue | 194 | 0.12 |
| | | 19605 | Fortis Green Road | 297 | 0.18 |
| | | 9443 | Cranley Gardens | 199 | 0.12 |
| | | BP2597 | Cranley Gardens | 168 | 0.10 |
| | | 19604 | Onslow Gardens | 249 | 0.15 |
| | | BP3116 | Highgate Wood | 263 | 0.16 |
| | | 1143 | Wood Lane / Highgate Station | 311 | 0.19 |
| | HIGHSN | 9431 | Highgate Station | 203 | 0.13 |
| | | 10860 | Southwood Avenue | 282 | 0.18 |
| | | 1909 | Northwood Road | 277 | 0.17 |
| | | 9863 | Langdon Park Road | 234 | 0.15 |
| | | 9861 | Waterlow Road | 370 | 0.23 |
| | | 528 | Whittington Hospital | 203 | 0.13 |
| | ARCHHR | BP2478 | Archway Station / Holloway Road | 222 | 0.14 |
| | HOLLPGS | 9857 | Upper Holloway Station | 347 | 0.22 |
| | | 9853 | Alexander Road | 430 | 0.27 |
| | | 9849 | Manor Gardens | 266 | 0.17 |
| | | R0055 | Seven Sisters Road / Parkhurst Road | 247 | 0.15 |
| | HOLLHR | 26431 | Holloway Nags Head | 148 | 0.09 |
| | | 797 | Tollington Road | 253 | 0.16 |
| | | 10010 | Holloway Road Station | 463 | 0.29 |
| | | 1083 | Liverpool Road | 160 | 0.10 |
| | | 10004 | St. Mary Magdalene Church | 381 | 0.24 |
| | HYISSN | 10003 | Highbury & Islington Station | 294 | 0.18 |
| | | 80001 | Upper Street / Laycock Street | 395 | 0.25 |
| | | 33092 | Islington Town Hall | 232 | 0.14 |
| | | 29748 | St Mary's Church | 432 | 0.27 |
| | | 9995 | Islington Green | 264 | 0.16 |
| | ISLNHS | 36601 | Angel Station | 340 | 0.21 |
| | | 363 | Angel Islington / City Road | 287 | 0.18 |
| | | 8369 | Central Street | 411 | 0.26 |
| | | 8371 | Windsor Terrace | 441 | 0.27 |
| | | 8375 | Moorfields Eye Hospital | 188 | 0.12 |
| | OLSTSN | 33263 | Old Street Station | 210 | 0.13 |
| | | 187 | City Road / Leonard Street | 378 | 0.23 |
| | | 2460 | Epworth Street | 175 | 0.11 |
| | FINSSQ | 2462 | Finsbury Square | 284 | 0.18 |
| | | R0089 | Moorgate Station | 268 | 0.17 |
| | | 2466 | Great Swan Alley | 228 | 0.14 |
| | BANKSNP | BP933 | Bank Station / Princes Street | 225 | 0.14 |
| | | 14691 | King William Street / Monument Station | 314 | 0.20 |
| | | BP140 | Monument Station | 246 | 0.15 |
| | LONBSNC | 35427 | London Bridge Bus Station | 580 | 0.36 |
| | | LONBSNCS | London Bridge Bus Station, Stand C | 0 | 0.00 |
| TOTAL ROUTE MILEAGE - OUT DIRECTION | | | | 15488 | 9.62 |
| | | | | metres | miles |

| BACK DIRECTION | | | | |
|---|-------------|--|--------|-------|
| Timing Point Code | Stop Number | Stop Name | Metres | Miles |
| LONBSNCS | LONBSNCS | London Bridge Bus Station, Stand C | | |
| LONBSNC | 35427 | London Bridge Bus Station | 0 | 0.00 |
| | 978 | London Bridge | 299 | 0.19 |
| | 2123 | Monument Station | 324 | 0.20 |
| | 27954 | Bank Station / King William Street | 330 | 0.21 |
| BANKSNP | 2468 | Bank Station / Princes Street | 254 | 0.16 |
| | 2467 | London Wall | 280 | 0.17 |
| | 1160 | Moorgate Station | 223 | 0.14 |
| FINSSQ | 20726 | Finsbury Square | 270 | 0.17 |
| | 29071 | Old Street Station | 330 | 0.21 |
| OLSTSN | 188 | Old Street Roundabout | 310 | 0.19 |
| | 29930 | Moorfields Eye Hospital | 250 | 0.16 |
| | 8372 | Windsor Terrace | 218 | 0.14 |
| | 8368 | Central Street | 456 | 0.28 |
| | BP1079 | Angel Islington | 445 | 0.28 |
| ISLNHS | 25146 | Angel Station | 357 | 0.22 |
| | 9996 | Theberton Street | 341 | 0.21 |
| | 29792 | St.Marys Church | 249 | 0.15 |
| | 26500 | Islington Town Hall | 318 | 0.20 |
| | 10002 | Highbury Corner | 341 | 0.21 |
| HYISSN | 29772 | Highbury & Islington Station | 198 | 0.12 |
| | 10005 | St. Mary Magdalene Church | 337 | 0.21 |
| | 1084 | Liverpool Road | 287 | 0.18 |
| | 10011 | Holloway Road Station | 315 | 0.20 |
| | 796 | Camden Road | 353 | 0.22 |
| HOLLHR | 314 | Nags Head, Holloway | 186 | 0.12 |
| | 9850 | Tufnell Park Road | 336 | 0.21 |
| | 9852 | Manor Gardens | 248 | 0.15 |
| | 11328 | Wedmore Street | 297 | 0.18 |
| HOLLPGN | 9858 | Upper Holloway Station | 314 | 0.20 |
| | BP2307 | Elthorne Road | 150 | 0.09 |
| ARCHHH | 36803 | Archway Station / Highgate Hill | 254 | 0.16 |
| | 33982 | Archway Road / Tollhouse Road | 195 | 0.12 |
| | 9862 | Waterlow Road | 190 | 0.12 |
| | 9864 | Langdon Park Road | 441 | 0.27 |
| | 1908 | Northwood Road | 276 | 0.17 |
| HIGHSN | 9432 | Highgate Station | 389 | 0.24 |
| | 1142 | Wood Lane / Highgate Station | 270 | 0.17 |
| | BP3230 | Highgate Wood | 335 | 0.21 |
| | 19603 | Onslow Gardens | 302 | 0.19 |
| | 9444 | Cranley Gardens | 256 | 0.16 |
| | 15599 | Fortis Green Road | 326 | 0.20 |
| MHILBYS | 1147 | Muswell Hill | 267 | 0.17 |
| | 1146 | Queens Avenue | 136 | 0.08 |
| | 80010 | Meadow Drive | 278 | 0.17 |
| | 1910 | Alexandra Park Road | 255 | 0.16 |
| | 1306 | Wilton Road | 362 | 0.22 |
| | 19606 | Pembroke Road / St Peter's Church | 347 | 0.22 |
| | 7521 | Hampden Road | 211 | 0.13 |
| CHLNTS | 19608 | North Circular Road | 468 | 0.29 |
| | 29919 | Firs Avenue | 180 | 0.11 |
| | 20145 | Hillside Avenue | 377 | 0.23 |
| | BP4294 | Friern Barnet Town Hall | 316 | 0.20 |
| | 8285 | St John's Church | 125 | 0.08 |
| FBARLB | BP3120 | Halliwick Park | 272 | 0.17 |
| | FBARLB S | Friern Barnet, Library, Friern Barnet Road | 0 | 0.00 |
| TOTAL ROUTE MILEAGE - BACK DIRECTION | | | 15444 | 9.60 |
| | | | metres | miles |