

7. Service Specification

Route: 44/N44

Contract Reference QC40801

This Service Specification forms section 7 of the ITT and should be read in conjunction with the ITT document, Version 1 dated 29 September 2011.

You are formally invited to tender for the provision of the bus service detailed below and in accordance with this Service Specification. Tenderers must ensure that a Compliant Tender is submitted and this will only be considered for evaluation if all parts of the Tender documents, as set out in section 11, have been received by the Corporation by the Date of Tender. The Tender must be fully completed in the required format, in accordance with the Instructions to Tenderers. A Compliant Tender must comply fully with the requirements of the Framework Agreement; adhere to the requirements of the Service Specification; and reflect the price of operating the Services with new vehicles.

Terminus Points	Route No. 44: Victoria Station to Tooting Station Route No. N44: Aldwych to Sutton Station, The Quadrant
Contract Basis	Incentivised
Commencement Date	1 st June 2013
Vehicle Type	87 capacity, dual door, double deck buses
Current Maximum Approved Dimensions	10.1 metres long and 2.55 metres wide
New Vehicles Mandatory	Yes
Hybrid Price Required	Yes
Sponsored Route	The Mondays to Fridays AM & PM peak frequency increase (Option 2) is subject to a Section 106 agreement
Minimum Performance Standard - Route No. 44	Average Excess Wait Time - No more than 1.20 minutes
Extension Threshold - Route No. 44	Average Excess Wait Time Threshold - 1.05 minutes
Advertising Rights	Operator
Minimum Operated Mileage Standard - Route No. 44	No less than 98.00%
Departing On Time - Route No. N44	Departing on Time - No less than 85.00%
Minimum Operated Mileage Standard - Route No. N44	No less than 98.00%

The Date of Tender for this ITT is:
No later than 12 Noon on 23rd April 2012

Tenderers should refer to section 3 of Part A for the Service Specification Explanatory Notes and Appendix B of section 5 for the Example Service Specification of the ITT document.

SERVICE SPECIFICATION

- 1) SERVICE SPEC – ROUTE SPECIFICATION INFORMATION
- 2) NOTES
- 3) SCHEDULE REQUIREMENTS & PINCHPOINTS
- 4) OPERATIONAL CONSIDERATIONS
- 5) ROUTE RECORD, CURRENT PERFORMANCE, QSI BY TIME OF DAY,
IBUS MILEAGE & QSI POINTS

2) NOTES

Proposed Changes:

At this time, no changes are proposed to the existing service for introduction prior to the commencement of the new Route Agreement for Route Nos. 44 & N44.

Tenderers should note that the following alterations (subject to consultation) are proposed as part of this Service Specification for introduction with the new Route Agreement:

Option 1

- Ex Tooting Station, a journey is specified on Mondays to Fridays Schooldays increasing the frequency from every 10 minutes to every 8-9 minutes (7 buses an hour) between 0745 and 0845.

Option 2

- Mondays to Fridays AM & PM peak frequencies are increased from every 10 minutes to every 8 minutes. This option would not be implemented until funding is released from either the Chelsea Barracks or Vauxhall Nine Elms Battersea developments.

Options 1 & 2

- Ex Victoria the 0030 departure on Route No. 44 is withdrawn. It is replaced by the introduction of the 0015 departure ex Aldwych, St. Marys Church on Route No. N44. This is to improve the current day/night interface between Route Nos. 44 & N44 and to reduce the gap between the last train departure from Victoria to Sutton and the first N44 departure.
- Route No. 44 is on diversion in the Victoria area until November 2013 due to the Victoria Station Upgrade works. Therefore Tenderers should refer to the Route No. 44 schedules dated 28/05/2011 in addition to the current live schedule.
- **Tenderers must identify the cost of the Nightly element of this service separately.**

3) SCHEDULE REQUIREMENTS & PINCHPOINTS

OPTION 1

3.1) MONDAY TO FRIDAY SCHOOL HOLIDAYS SCHEDULE REQUIREMENTS & PINCHPOINTS

Victoria Station, Victoria Street to Tooting Station		Tooting Station to Victoria Station, Buckingham Palace Road			
First departure no later than 0505.		First departure no later than 0505.			
0500 - 0550	Every 15 minutes	0500 - 0520	Every 15 minutes		
0551 - 0700	Every 12 minutes	0521 - 0610	Every 12 minutes		
0701 - 1940	Every 10 minutes	0611 - 1840	Every 10 minutes		
1941 - 2030	Every 12 minutes	1841 - 2005	Every 12 minutes		
2031 - 0020	Every 15 minutes	2006 - 2340	Every 15 minutes		
Last departure no earlier than 0015.		Last departure no earlier than 2335.			
Pinchpoints					
Tooting Broadway, Mitcham Road	0750 - 0850	10 minutes	Battersea Park Station	0730 - 0830	10 minutes
	1530 - 1630	10 minutes		1550 - 1650	10 minutes

3.2) MONDAY TO FRIDAY SCHOOLDAYS SCHEDULE REQUIREMENTS & PINCHPOINTS

Victoria Station, Victoria Street to Tooting Station		Tooting Station to Victoria Station, Buckingham Palace Road			
First departure no later than 0505.		First departure no later than 0505.			
0500 - 0550	Every 15 minutes	0500 - 0520	Every 15 minutes		
0551 - 0700	Every 12 minutes	0521 - 0610	Every 12 minutes		
0701 - 1940	Every 10 minutes	0611 - 0745	Every 10 minutes		
1941 - 2030	Every 12 minutes	0746 - 0845	Every 8 - 9 minutes (7 buses per hour)		
2031 - 0020	Every 15 minutes	0846 - 1840	Every 10 minutes		
		1841 - 2005	Every 12 minutes		
		2006 - 2340	Every 15 minutes		
Last departure no earlier than 0015.		Last departure no earlier than 2335.			
Pinchpoints					
Tooting Broadway, Mitcham Road	0750 - 0850	10 minutes	Battersea Park Station	0730 - 0830	10 minutes
	1530 - 1630	10 minutes		1550 - 1650	10 minutes

OPTION 2

3.3) MONDAY TO FRIDAY SCHEDULE REQUIREMENTS & PINCHPOINTS

Victoria Station, Victoria Street to Tooting Station		Tooting Station to Victoria Station, Buckingham Palace Road			
First departure no later than 0505.		First departure no later than 0505.			
0500 - 0550	Every 15 minutes	0500 - 0520	Every 15 minutes		
0551 - 0650	Every 12 minutes	0521 - 0610	Every 12 minutes		
0651 - 0700	Every 10 minutes	0611 - 0630	Every 10 minutes		
0701 - 0940	Every 8 minutes	0631 - 0930	Every 8 minutes		
0941 - 1500	Every 10 minutes	0931 - 1530	Every 10 minutes		
1501 - 1820	Every 8 minutes	1531 - 1830	Every 8 minutes		
1821 - 1940	Every 10 minutes	1831 - 1840	Every 10 minutes		
1941 - 2030	Every 12 minutes	1841 - 2005	Every 12 minutes		
2031 - 0020	Every 15 minutes	2006 - 2340	Every 15 minutes		
Last departure no earlier than 0015.		Last departure no earlier than 2335.			
Pinchpoints					
Tooting Broadway, Mitcham Road	0750 - 0850	8 minutes	Battersea Park Station	0730 - 0830	8 minutes
	1530 - 1630	8 minutes		1550 - 1620	10 minutes
				1621 - 1650	8 minutes

OPTIONS 1 & 2

3.4) SATURDAY AND GOOD FRIDAY SCHEDULE REQUIREMENTS & PINCHPOINTS

Victoria Station, Victoria Street to Tooting Station		Tooting Station to Victoria Station, Buckingham Palace Road			
First departure no later than 0505.		First departure no later than 0505.			
0500 - 0640	Every 20 minutes	0500 - 0605	Every 20 minutes		
0641 - 0755	Every 15 minutes	0606 - 0805	Every 15 minutes		
0756 - 0820	Every 12 minutes	0806 - 0830	Every 12 minutes		
0821 - 1830	Every 10 minutes	0831 - 1805	Every 10 minutes		
1831 - 1930	Every 12 minutes	1806 - 1905	Every 12 minutes		
1931 - 0020	Every 15 minutes	1906 - 2340	Every 15 minutes		
Last departure no earlier than 0015.		Last departure no earlier than 2335.			
Pinchpoints					
Tooting Broadway, Mitcham Road	0930 - 1100	10 minutes	Battersea Park Station	0930 - 1100	10 minutes

OPTIONS 1 & 2

3.5) SUNDAY AND PUBLIC HOLIDAY SCHEDULE REQUIREMENTS & PINCHPOINTS

Victoria Station, Victoria Street to Tooting Station		Tooting Station to Victoria Coach Station, Buckingham Palace Road			
First departure no later than 0505.		First departure no later than 0505.			
0500 - 0900	Every 20 minutes	0500 - 0900	Every 20 minutes		
0901 - 0020	Every 15 minutes	0901 - 2340	Every 15 minutes		
Last departure no earlier than 0015.		Last departure no earlier than 2335.			
Pinchpoints					
Tooting Broadway, Mitcham Road	1030 - 1130	15 minutes	Battersea Park Station	1015 - 1115	15 minutes

OPTIONS 1 & 2

3.6) BOXING DAY SCHEDULE REQUIREMENTS & PINCHPOINTS

Victoria Station, Victoria Street to Tooting Station		Tooting Station to Victoria Coach Station, Buckingham Palace Road			
First departure no later than 0800.		First departure no later than 0805.			
0755 - 0900	Every 20 minutes	0800 - 0900	Every 20 minutes		
0901 - 0020	Every 15 minutes	0901 - 2340	Every 15 minutes		
Last departure no earlier than 0015.		Last departure no earlier than 2335.			
Pinchpoints					
Tooting Broadway, Mitcham Road	1030 - 1130	15 minutes	Battersea Park Station	1015 - 1115	15 minutes

OPTIONS 1 & 2

3.7) SUNDAY NIGHTS/MONDAY MORNINGS TO THURSDAY NIGHTS/FRIDAY MORNINGS

Aldwych, St. Marys Church to Sutton Station, The Quadrant		Sutton Station, The Quadrant to Aldwych, West Arm			
First departure no later than 0015.		First departure no later than 2335.			
0010 - 0440	Every 30 minutes	2330 - 0440	Every 30 minutes		
Last departure no earlier than 0435.		Last departure no earlier than 0435.			

Tenderers must identify the cost of the Nightly element of this service separately.

OPTIONS 1 & 2

3.8) FRIDAY NIGHTS/SATURDAYS MORNINGS TO SATURDAYS NIGHTS/SUNDAYS MORNINGS

Aldwych, St. Marys Church to Sutton Station, The Quadrant		Sutton Station, The Quadrant to Aldwych, West Arm	
First departure no later than 0015.		First departure no later than 2335.	
0010 - 0440	Every 20 minutes	2330 - 0440	Every 20 minutes
Last departure no earlier than 0435.		Last departure no earlier than 0435.	

Tenderers must identify the cost of the Nightly element of this service separately.

4) OPERATIONAL CONSIDERATIONS

- 4.1) Route No. 44 should interwork with Route No. N44 between Victoria and Tooting Station to form a seamless 24 hour service.
- 4.2) Route No. 44 should interwork with Route No. 270 between Wandsworth, Southside and Tooting Broadway, Mitcham Road when both services are operating at a frequency of every 10 minutes. Please note, Route No. 270 is being retendered as part of Tranche 409.
- 4.3) When compiling schedules Tenderers are asked to consider passengers making connections to other services at the following locations:
Earlsfield Station, Tooting Broadway LUL Station, Tooting Station
- 4.4) Route Nos. 44 & N44 can suffer unpredictable traffic delays in the Tooting and Wandsworth areas, particularly during peak periods.
- 4.5) Options to relocate the existing bus stand in Longley Road to an alternative location in Longley Road are being investigated. The successful Tenderer will be advised of any change.
- 4.6) The Chelsea Barracks development and the Vauxhall Nine Elms Battersea Opportunity Area will both impact on bus demand in the area served by Route Nos. 44 & N44. The introduction of Option 2 of this specification is subject to the availability of funding secured for bus services in association with these developments. The successful Tenderer will be kept updated on this scheme.
- 4.7) The Northern line (Charing Cross branch) will be extended from Kennington to Battersea Power Station. Proposals exist for two new tube stations at Nine Elms and Battersea allowing easy access to the tube network. Subject to further planning permission, the Northern line extension should be completed in 2017. The construction impacts could affect Route Nos. 44 & N44 and some passenger demand for may shift to this line when it opens.

**5) ROUTE RECORD, CURRENT PERFORMANCE, QSI BY TIME OF DAY,
IBUS MILEAGE & QSI POINTS**

5.1) ROUTE RECORD
As per Busnet Printout.

5.2) CURRENT PERFORMANCE
As per current print out.

5.3) QSI BY TIME OF DAY
As per current print out

5.4) IBUS MILEAGE & QSI POINTS
As per current print out.

LONDON BUSES - ROUTE DESCRIPTION

ROUTE 44: Victoria Station - Tooting Station

Date of Structural Change: 1 June 2013.

Date of Service Change: 1 June 2013.

Reason for Issue: New contract - option 1.

STREETS TRAVERSED

Towards Tooting Station: Victoria Street, Buckingham Palace Road, Ebury Bridge Road, Chelsea Bridge Road, Chelsea Bridge, Queenstown Road, Queen's Circus, Queenstown Road, Battersea Park Road, York Road, Swandon Way, Old York Road, Fairfield Street, Wandsworth High Street, Garratt Lane, Tooting Broadway, Mitcham Road.

Towards Victoria Station: Mitcham Road, Tooting Broadway, Garratt Lane, Ram Street, Armoury Way, Old York Road, Swandon Way, Wandsworth Bridge Roundabout, York Road, Battersea Park Road, Queenstown Road, Queen's Circus, Queenstown Road, Chelsea Bridge, Chelsea Bridge Road, Ebury Bridge Road, Buckingham Palace Road, Terminus Place.

AUTHORISED STANDS, CURTAILMENT POINTS, & BLIND DESCRIPTIONS

Please note that only stands, curtailment points, & blind descriptions as detailed in this contractual document may be used.

VICTORIA, VAUXHALL BRIDGE ROAD [EAST]

Public stand for four buses on east side of Vauxhall Bridge Road before Stop L, commencing outside No. 312A, opposite Apollo Theatre.

Buses proceed from Terminus Place via Wilton Road and Vauxhall Bridge Road to stand, departing via Vauxhall Bridge Road, Neathouse Place and Wilton Road to Victoria Street. Set down in Victoria Bus Station, Bay A, at Alighting Point AP (BP4489 - Victoria Station # <>, Last Stop on LOR: 35312 - Eccleston Bridge) and pick up in Victoria Street, at Stop G (37303 - Victoria Station <>#, First Stop on LOR: 37303 - Victoria Station <>#).

AVAILABILITY: At any time.

OPERATING RESTRICTIONS: No more than 2 buses on Route 44 should be scheduled to stand at any one time.

MEAL RELIEFS: No meal relief vehicles to stand at any time.

FERRY VEHICLES: No ferry vehicles to park on stand at any time.

BLIND DISPLAY: Victoria.

OTHER INFORMATION: Toilet facilities available in Victoria Bus Station.

BATTERSEA PARK

From Tooting Station.

Buses proceed from Queenstown Road via Queen's Circus departing to Queenstown Road. Set down in Queenstown Road, at Stop D (9334 - Battersea Park Station #, Last Stop on LOR: 9334 - Battersea Park Station #) and pick up in Queenstown Road, at Stop C (9335 - Battersea Park Station #, First Stop on LOR: 9335 - Battersea Park Station #).

From Victoria Station.

Buses proceed from Queenstown Road via Queen's Circus departing to Queenstown Road. Set down in Queenstown Road, at Stop F (W18 - Sopwith Way, Last Stop on LOR: W18 - Sopwith Way) and pick up in Queenstown Road, at Stop E (W19 - Sopwith Way, First Stop on LOR: W19 - Sopwith Way).

AVAILABILITY: At any time.
OPERATING RESTRICTIONS: **Turning Point Only - Buses must not stand**
BLIND DISPLAY: Battersea Park Station.

BATTERSEA BRIDGE ROAD, LATCHMERE (from TOOTING STATION)

Public stand for two buses on west side of Battersea Bridge Road, commencing outside No. 214 and extending 23 metres south.

Buses proceed from Battersea Park Road via Battersea Bridge Road to stand, departing via Prince Of Wales Drive and Albert Bridge Road to Battersea Park Road. Set down in Battersea Park Road, at Stop LQ (25525 - Bullen Street, Last Stop on LOR: 25525 - Bullen Street) and pick up in Battersea Park Road, at Stop LC (25527 - The Latchmere, First Stop on LOR: 25527 - The Latchmere).

AVAILABILITY: At any time.
OPERATING RESTRICTIONS: Unscheduled curtailments only
MEAL RELIEFS: No meal relief vehicles to stand at any time.
FERRY VEHICLES: No ferry vehicles to park on stand at any time.
BLIND DISPLAY: Battersea, Latchmere Road.

WANDSWORTH, WANDSWORTH PLAIN (from Victoria Station)

Buses proceed from Fairfield Street via Wandsworth High Street, Wandsworth Plain and Armoury Way departing to Old York Road. Set down in Fairfield Street, at stop M (33273 - Wandsworth Town Hall, Last Stop on LOR: 33273 - Wandsworth Town Hall) and pick up in Old York Road, at stop K (17944 - Tonsley Street, First Stop on LOR: 17944 - Tonsley Street).

AVAILABILITY: At any time.
OPERATING RESTRICTIONS: **Turning Point Only - Buses must not stand**
BLIND DISPLAY: Wandsworth.

WANDSWORTH, MAPLETON ROAD (from Victoria Station)

Public stand for six buses on north side of Mapleton Road, commencing 43 metres west of the western kerbline of Garratt Lane and extending 62 metres west.

Buses proceed from Garratt Lane via Mapleton Crescent and Mapleton Road to stand, departing via Mapleton Road to Garratt Lane. Set down in Garratt Lane, at Stop S (13362 - Garratt Lane / Southside Shopping Centre, Last Stop on LOR: 13362 - Garratt Lane / Southside Shopping Centre) and pick up in Garratt Lane (8852 - Mapleton Road, First Stop on LOR: 8852 - Mapleton Road).

AVAILABILITY:	At any time.
OPERATING RESTRICTIONS:	Unscheduled curtailments only.
MEAL RELIEFS:	No meal relief vehicles to stand at any time.
FERRY VEHICLES:	No ferry vehicles to park on stand at any time.
BLIND DISPLAY:	Wandsworth.

GARRATT LANE, WIMBLEDON ROAD

Public stand for one bus on south side of Wimbledon Road, commencing opposite the party wall of 10/12 and extending 12 metres east.

From Tooting Station.

Buses proceed from Garratt Lane via Wimbledon Road to stand, departing via Wimbledon Road and Keble Street to Garratt Lane. Set down in Garratt Lane, at Stop SB (8827 - Wimbledon Road, Last Stop on LOR: 8827 - Wimbledon Road) and pick up in Garratt Lane, at Stop SJ (8826 - Wimbledon Road, First Stop on LOR: 8826 - Wimbledon Road).

From Victoria Station.

Buses proceed from Garratt Lane via Wimbledon Road to stand, departing via Wimbledon Road and Summerstown to Garratt Lane. Set down in Garratt Lane, at Stop SH (8833 - Summerstown, Last Stop on LOR: 8833 - Summerstown) and pick up in Garratt Lane, at Stop SD (8832 - Burntwood Lane, First Stop on LOR: 8832 - Burntwood Lane).

AVAILABILITY:	At any time.
OPERATING RESTRICTIONS:	Unscheduled curtailments only.
MEAL RELIEFS:	No meal relief vehicles to stand at any time.
FERRY VEHICLES:	No ferry vehicles to park on stand at any time.
BLIND DISPLAY:	Garratt Lane, Wimbledon Road.
OTHER INFORMATION:	Buses must NOT use Keble Street.

TOOTING BROADWAY, LONGMEAD ROAD (from Victoria Station)

Buses proceed from Tooting Broadway via Longmead Road and Tooting Broadway departing to Garratt Lane. Set down in Longmead Road, at Alighting Point (34683 - Longmead Road, Last Stop on LOR: 8919 - Tooting Broadway Station <=>) and pick up in Garratt Lane, at stop N (BP3481 - Garratt Lane / Tooting Broadway, First Stop on LOR: BP3481 - Garratt Lane / Tooting Broadway).

AVAILABILITY: At any time.
OPERATING RESTRICTIONS: **Turning Point Only - Buses must not stand**
BLIND DISPLAY: Tooting Broadway.

TOOTING STATION, LONGLEY ROAD

Public stand for two buses on south side of Longley Road commencing 6.5 metres west of lamp standard 5E18 and extending 29 metres west.

Buses proceed from Mitcham Road via Longley Road to stand, departing via Longley Road, Bickersteth Road and Renmuir Street to Mitcham Road. Set down in Mitcham Road, at Stop TT (435 - Tooting Station #, Last Stop on LOR: 435 - Tooting Station #) and pick up in Mitcham Road, at Stop TD (434 - Mitcham Road / Tooting Station #, First Stop on LOR: 434 - Mitcham Road / Tooting Station #).

AVAILABILITY: At any time.
OPERATING RESTRICTIONS: No more than 2 buses on Route 44 should be scheduled to stand at any one time.
MEAL RELIEFS: No meal relief vehicles to stand at any time.
FERRY VEHICLES: No ferry vehicles to park on stand at any time.
BLIND DISPLAY: Tooting Station.

LONDON BUSES - ROUTE DESCRIPTION

ROUTE 44: Victoria Station - Tooting Station

Date of Structural Change: 2 June 2013.

Date of Service Change: 2 June 2013.

Reason for Issue: New contract - option 2.

STREETS TRAVERSED

Towards Tooting Station: Victoria Street, Buckingham Palace Road, Ebury Bridge Road, Chelsea Bridge Road, Chelsea Bridge, Queenstown Road, Queen's Circus, Queenstown Road, Battersea Park Road, York Road, Swandon Way, Old York Road, Fairfield Street, Wandsworth High Street, Garratt Lane, Tooting Broadway, Mitcham Road.

Towards Victoria Station: Mitcham Road, Tooting Broadway, Garratt Lane, Ram Street, Armoury Way, Old York Road, Swandon Way, Wandsworth Bridge Roundabout, York Road, Battersea Park Road, Queenstown Road, Queen's Circus, Queenstown Road, Chelsea Bridge, Chelsea Bridge Road, Ebury Bridge Road, Buckingham Palace Road, Terminus Place.

AUTHORISED STANDS, CURTAILMENT POINTS, & BLIND DESCRIPTIONS

Please note that only stands, curtailment points, & blind descriptions as detailed in this contractual document may be used.

VICTORIA, VAUXHALL BRIDGE ROAD [EAST]

Public stand for four buses on east side of Vauxhall Bridge Road before Stop L, commencing outside No. 312A, opposite Apollo Theatre.

Buses proceed from Terminus Place via Wilton Road and Vauxhall Bridge Road to stand, departing via Vauxhall Bridge Road, Neathouse Place and Wilton Road to Victoria Street. Set down in Victoria Bus Station, Bay A, at Alighting Point AP (BP4489 - Victoria Station # <>, Last Stop on LOR: 35312 - Eccleston Bridge) and pick up in Victoria Street, at Stop G (37303 - Victoria Station <>#, First Stop on LOR: 37303 - Victoria Station <>#).

AVAILABILITY:	At any time.
OPERATING RESTRICTIONS:	No more than 2 buses on Route 44 should be scheduled to stand at any one time.
MEAL RELIEFS:	No meal relief vehicles to stand at any time.
FERRY VEHICLES:	No ferry vehicles to park on stand at any time.
BLIND DISPLAY:	Victoria.
OTHER INFORMATION:	Toilet facilities available in Victoria Bus Station.

BATTERSEA PARK

From Tooting Station.

Buses proceed from Queenstown Road via Queen's Circus departing to Queenstown Road. Set down in Queenstown Road, at Stop D (9334 - Battersea Park Station #, Last Stop on LOR: 9334 - Battersea Park Station #) and pick up in Queenstown Road, at Stop C (9335 - Battersea Park Station #, First Stop on LOR: 9335 - Battersea Park Station #).

From Victoria Station.

Buses proceed from Queenstown Road via Queen's Circus departing to Queenstown Road. Set down in Queenstown Road, at Stop F (W18 - Sopwith Way, Last Stop on LOR: W18 - Sopwith Way) and pick up in Queenstown Road, at Stop E (W19 - Sopwith Way, First Stop on LOR: W19 - Sopwith Way).

AVAILABILITY: At any time.
OPERATING RESTRICTIONS: **Turning Point Only - Buses must not stand**
BLIND DISPLAY: Battersea Park Station.

BATTERSEA BRIDGE ROAD, LATCHMERE (from TOOTING STATION)

Public stand for two buses on west side of Battersea Bridge Road, commencing outside No. 214 and extending 23 metres south.

Buses proceed from Battersea Park Road via Battersea Bridge Road to stand, departing via Prince Of Wales Drive and Albert Bridge Road to Battersea Park Road. Set down in Battersea Park Road, at Stop LQ (25525 - Bullen Street, Last Stop on LOR: 25525 - Bullen Street) and pick up in Battersea Park Road, at Stop LC (25527 - The Latchmere, First Stop on LOR: 25527 - The Latchmere).

AVAILABILITY: At any time.
OPERATING RESTRICTIONS: Unscheduled curtailments only
MEAL RELIEFS: No meal relief vehicles to stand at any time.
FERRY VEHICLES: No ferry vehicles to park on stand at any time.
BLIND DISPLAY: Battersea, Latchmere Road.

WANDSWORTH, WANDSWORTH PLAIN (from Victoria Station)

Buses proceed from Fairfield Street via Wandsworth High Street, Wandsworth Plain and Armoury Way departing to Old York Road. Set down in Fairfield Street, at stop M (33273 - Wandsworth Town Hall, Last Stop on LOR: 33273 - Wandsworth Town Hall) and pick up in Old York Road, at stop K (17944 - Tonsley Street, First Stop on LOR: 17944 - Tonsley Street).

AVAILABILITY: At any time.
OPERATING RESTRICTIONS: **Turning Point Only - Buses must not stand**
BLIND DISPLAY: Wandsworth.

WANDSWORTH, MAPLETON ROAD (from Victoria Station)

Public stand for six buses on north side of Mapleton Road, commencing 43 metres west of the western kerbline of Garratt Lane and extending 62 metres west.

Buses proceed from Garratt Lane via Mapleton Crescent and Mapleton Road to stand, departing via Mapleton Road to Garratt Lane. Set down in Garratt Lane, at Stop S (13362 - Garratt Lane / Southside Shopping Centre, Last Stop on LOR: 13362 - Garratt Lane / Southside Shopping Centre) and pick up in Garratt Lane (8852 - Mapleton Road, First Stop on LOR: 8852 - Mapleton Road).

AVAILABILITY:	At any time.
OPERATING RESTRICTIONS:	Unscheduled curtailments only.
MEAL RELIEFS:	No meal relief vehicles to stand at any time.
FERRY VEHICLES:	No ferry vehicles to park on stand at any time.
BLIND DISPLAY:	Wandsworth.

GARRATT LANE, WIMBLEDON ROAD

Public stand for one bus on south side of Wimbledon Road, commencing opposite the party wall of 10/12 and extending 12 metres east.

From Tooting Station.

Buses proceed from Garratt Lane via Wimbledon Road to stand, departing via Wimbledon Road and Keble Street to Garratt Lane. Set down in Garratt Lane, at Stop SB (8827 - Wimbledon Road, Last Stop on LOR: 8827 - Wimbledon Road) and pick up in Garratt Lane, at Stop SJ (8826 - Wimbledon Road, First Stop on LOR: 8826 - Wimbledon Road).

From Victoria Station.

Buses proceed from Garratt Lane via Wimbledon Road to stand, departing via Wimbledon Road and Summerstown to Garratt Lane. Set down in Garratt Lane, at Stop SH (8833 - Summerstown, Last Stop on LOR: 8833 - Summerstown) and pick up in Garratt Lane, at Stop SD (8832 - Burntwood Lane, First Stop on LOR: 8832 - Burntwood Lane).

AVAILABILITY:	At any time.
OPERATING RESTRICTIONS:	Unscheduled curtailments only.
MEAL RELIEFS:	No meal relief vehicles to stand at any time.
FERRY VEHICLES:	No ferry vehicles to park on stand at any time.
BLIND DISPLAY:	Garratt Lane, Wimbledon Road.
OTHER INFORMATION:	Buses must NOT use Keble Street.

TOOTING BROADWAY, LONGMEAD ROAD (from Victoria Station)

Buses proceed from Tooting Broadway via Longmead Road and Tooting Broadway departing to Garratt Lane. Set down in Longmead Road, at Alighting Point (34683 - Longmead Road, Last Stop on LOR: 8919 - Tooting Broadway Station <=>) and pick up in Garratt Lane, at stop N (BP3481 - Garratt Lane / Tooting Broadway, First Stop on LOR: BP3481 - Garratt Lane / Tooting Broadway).

AVAILABILITY: At any time.
OPERATING RESTRICTIONS: **Turning Point Only - Buses must not stand**
BLIND DISPLAY: Tooting Broadway.

TOOTING STATION, LONGLEY ROAD

Public stand for two buses on south side of Longley Road commencing 6.5 metres west of lamp standard 5E18 and extending 29 metres west.

Buses proceed from Mitcham Road via Longley Road to stand, departing via Longley Road, Bickersteth Road and Renmuir Street to Mitcham Road. Set down in Mitcham Road, at Stop TT (435 - Tooting Station #, Last Stop on LOR: 435 - Tooting Station #) and pick up in Mitcham Road, at Stop TD (434 - Mitcham Road / Tooting Station #, First Stop on LOR: 434 - Mitcham Road / Tooting Station #).

AVAILABILITY: At any time.
OPERATING RESTRICTIONS: No more than 2 buses on Route 44 should be scheduled to stand at any one time.
MEAL RELIEFS: No meal relief vehicles to stand at any time.
FERRY VEHICLES: No ferry vehicles to park on stand at any time.
BLIND DISPLAY: Tooting Station.

LONDON BUSES - ROUTE DESCRIPTION

ROUTE N44: Aldwych - Sutton Station

Date of Structural Change: 1 June 2013.

Date of Service Change: 1 June 2013.

Reason for Issue: New contract.

STREETS TRAVERSED

Towards Sutton Station: Strand, Charing Cross, Whitehall, Parliament Street, Parliament Square, Broad Sanctuary, Victoria Street, Buckingham Palace Road, Ebury Bridge Road, Chelsea Bridge Road, Chelsea Bridge, Queenstown Road, Queen's Circus, Queenstown Road, Battersea Park Road, York Road, Swandon Way, Old York Road, Fairfield Street, Wandsworth High Street, Garratt Lane, Tooting Broadway, Mitcham Road, London Road, Holborn Way, Upper Green West, London Road, Bishopsford Road, Rose Hill Roundabout, Rose Hill, Angel Hill, Sutton High Street, Marshall's Road, Throwley Way, Carshalton Road, Chalk Pit Way, Sutton Court Road, Sutton High Street, Brighton Road, The Quadrant.

Towards Aldwych: The Quadrant, Wellesley Road, Brighton Road, Sutton High Street, Grove Road, Sutton Park Road, Cheam Road, St Nicholas Way, Crown Road, Sutton High Street, Angel Hill, Rose Hill, Rose Hill Roundabout, Bishopsford Road, London Road, Lower Green West, London Road, Raleigh Gardens, Holborn Way, London Road, Mitcham Road, Tooting Broadway, Garratt Lane, Ram Street, Armoury Way, Old York Road, Swandon Way, York Road, Battersea Park Road, Queenstown Road, Queen's Circus, Queenstown Road, Chelsea Bridge, Chelsea Bridge Road, Ebury Bridge Road, Buckingham Palace Road, Terminus Place, Wilton Road, Allington Street, Bressenden Place, Victoria Street, Broad Sanctuary, Parliament Square, Parliament Street, Whitehall, Charing Cross, Trafalgar Square (South Side), Strand, Aldwych.

AUTHORISED STANDS, CURTAILMENT POINTS, & BLIND DESCRIPTIONS

Please note that only stands, curtailment points, & blind descriptions as detailed in this contractual document may be used.

ALDWYCH, EAST ARM

Public offside stand for 6 buses on south side of Aldwych (east arm) commencing 10 metres west of Melbourne Place and extending 67 metres west. Overflow public stand for 3 buses on south side of Strand commencing 10 metres east of Surrey Street and extending 36 metres east.

Buses proceed from Aldwych direct to stand, departing via Aldwych to Strand. Set down in Aldwych, at Stop D (14628 - Aldwych, Last Stop on LOR: 20983 - Aldwych / Drury Lane) and pick up in Strand, at Stop R (34323 - Aldwych / Somerset House, First Stop on LOR: 34323 - Aldwych / Somerset House).

AVAILABILITY:	At any time.
OPERATING RESTRICTIONS:	No more than 1 bus on Route N44 should be scheduled to stand at any one time.
MEAL RELIEFS:	No meal relief vehicles to stand at any time.
FERRY VEHICLES:	No ferry vehicles to park on stand at any time.
BLIND DISPLAY:	Aldwych.

VICTORIA, VAUXHALL BRIDGE ROAD [WEST] (from SUTTON STATION)

Public stand for five buses on west side of Vauxhall Bridge Road commencing at the steps to the rear entrance of Parnell House.

Buses proceed from Terminus Place via Wilton Road and Vauxhall Bridge Road to stand, departing via Vauxhall Bridge Road, Neathouse Place and Wilton Road to Victoria Street. Set down in Terminus Place, at Alighting Point E (35314 - Victoria Station <>#, Last Stop on LOR: 35312 - Eccleston Bridge) and pick up in Victoria Street, at Stop G (37303 - Victoria Station <>#, First Stop on LOR: 37303 - Victoria Station <>#).

AVAILABILITY:	At any time.
OPERATING RESTRICTIONS:	Unscheduled curtailments only
MEAL RELIEFS:	No meal relief vehicles to stand at any time.
FERRY VEHICLES:	No ferry vehicles to park on stand at any time.
BLIND DISPLAY:	Victoria.

BATTERSEA PARK

From Aldwych.

Buses proceed from Queenstown Road via Queen's Circus departing to Queenstown Road. Set down in Queenstown Road, at Stop F (W18 - Sopwith Way, Last Stop on LOR: W18 - Sopwith Way) and pick up in Queenstown Road, at Stop E (W19 - Sopwith Way, First Stop on LOR: W19 - Sopwith Way).

From Sutton Station.

Buses proceed from Queenstown Road via Queen's Circus departing to Queenstown Road. Set down in Queenstown Road, at Stop D (9334 - Battersea Park Station #, Last Stop on LOR: 9334 - Battersea Park Station #) and pick up in Queenstown Road, at Stop C (9335 - Battersea Park Station #, First Stop on LOR: 9335 - Battersea Park Station #).

AVAILABILITY: At any time.
OPERATING RESTRICTIONS: **Turning Point Only - Buses must not stand**
BLIND DISPLAY: Battersea Park Station.

WANDSWORTH, WANDSWORTH PLAIN

Public stand for two buses on west side of Wandsworth Plain, commencing 7 metres south of lamp standard 2 extending 25 metres south.

From Aldwych.

Buses proceed from Wandsworth High Street via Wandsworth Plain to stand, departing via Wandsworth Plain and Armoury Way to Old York Road. Set down in Wandsworth High Street, at Alighting Point U (34069 - Wandsworth / Southside, Last Stop on LOR: 33273 - Wandsworth Town Hall) and pick up in Old York Road, at Stop K (17944 - Tonsley Street, First Stop on LOR: 17944 - Tonsley Street).

From Sutton Station.

Buses proceed from Garratt Lane via Wandsworth High Street and Wandsworth Plain to stand, departing via Wandsworth Plain and Armoury Way to Fairfield Street. Set down in Garratt Lane, at Stop T (8854 - Garratt Lane / Southside Shopping Centre, Last Stop on LOR: 8854 - Garratt Lane / Southside Shopping Centre) and pick up in Fairfield Street, at Stop M (33273 - Wandsworth Town Hall, First Stop on LOR: 33273 - Wandsworth Town Hall).

AVAILABILITY: At any time.
OPERATING RESTRICTIONS: Unscheduled curtailments only.
MEAL RELIEFS: No meal relief vehicles to stand at any time.
FERRY VEHICLES: No ferry vehicles to park on stand at any time.
BLIND DISPLAY: Wandsworth.

TOOTING STATION, LONGLEY ROAD

Public stand for two buses on south side of Longley Road commencing 6.5 metres west of lamp standard 5E18 and extending 29 metres west.

From Aldwych.

Buses proceed from Mitcham Road via Longley Road to stand, departing via Longley Road, Bickersteth Road and Renmuir Street to Mitcham Road. Set down in Mitcham Road, at Stop TT (435 - Tooting Station #, Last Stop on LOR: 435 - Tooting Station #) and pick up in Mitcham Road, at Stop TD (434 - Mitcham Road / Tooting Station #, First Stop on LOR: 434 - Mitcham Road / Tooting Station #).

From Sutton Station.

Buses proceed from London Road via Mitcham Road and Longley Road to stand, departing via Longley Road, Bickersteth Road and Renmuir Street to Mitcham Road. Set down in London Road, at Stop TC (16 - Tooting Station #, Last Stop on LOR: 16 - Tooting Station #) and pick up in Mitcham Road, at Stop TT (435 - Tooting Station #, First Stop on LOR: 435 - Tooting Station #).

AVAILABILITY:	At any time.
OPERATING RESTRICTIONS:	Unscheduled curtailments only.
MEAL RELIEFS:	No meal relief vehicles to stand at any time.
FERRY VEHICLES:	No ferry vehicles to park on stand at any time.
BLIND DISPLAY:	Tooting Station.

MITCHAM, CRICKETERS

From Aldwych.

Buses proceed from London Road via Lower Green West departing to London Road. Set down in London Road, at Stop M (33892 - Glebe Court, Last Stop on LOR: 33892 - Glebe Court) and pick up in London Road, at stop Q (BP5331 - Glebe Court, First Stop on LOR: BP5331 - Glebe Court).

From Sutton Station.

Buses proceed from London Road via Lower Green West departing to London Road. Set down in London Road, at Stop R (BP5365 - Mitcham / The Cricketers, Last Stop on LOR: BP5365 - Mitcham / The Cricketers) and pick up in London Road, at Stop X (33629 - Mitcham / The Cricketers, First Stop on LOR: 33629 - Mitcham / The Cricketers).

AVAILABILITY:	At any time.
OPERATING RESTRICTIONS:	Turning Point Only - Buses must not stand
BLIND DISPLAY:	Mitcham.

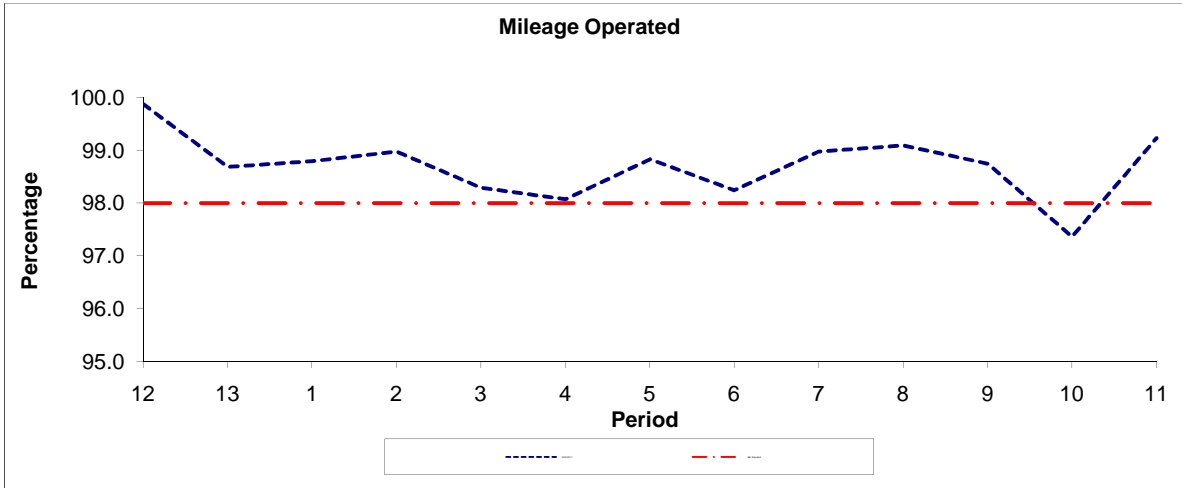
SUTTON STATION, THE QUADRANT

Public stand for two buses in bay in The Quadrant (west arm), opposite Quadrant House. Buses proceed from The Quadrant (West Arm) direct to stand, departing to The Quadrant. Set down in The Quadrant, at Stop Q (35897 - Sutton Station # / The Quadrant, Last Stop on LOR: 35897 - Sutton Station # / The Quadrant) and pick up in The Quadrant, at Stop Q (35897 - Sutton Station # / The Quadrant, First Stop on LOR: 35897 - Sutton Station # / The Quadrant).

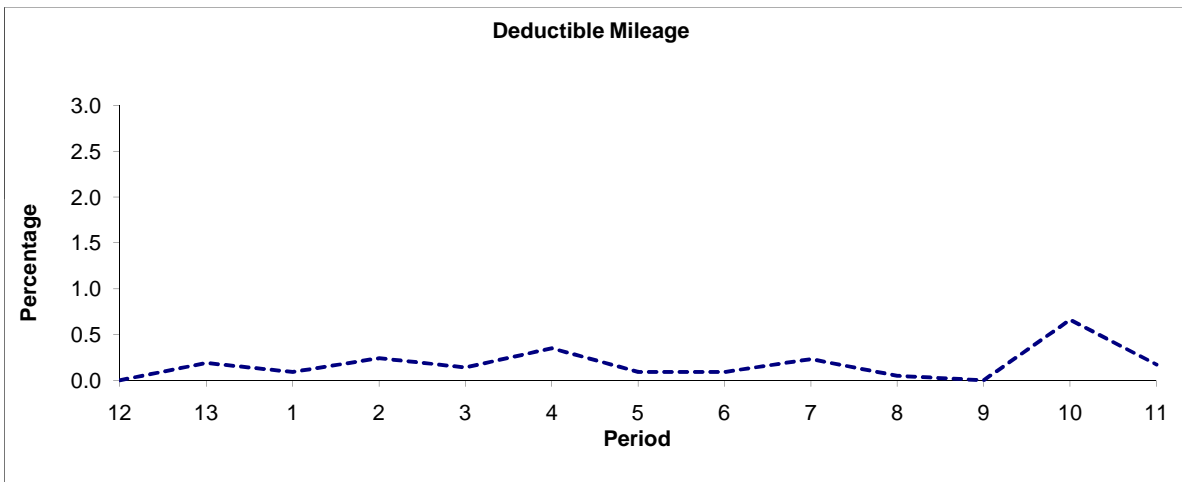
AVAILABILITY:	At any time.
OPERATING RESTRICTIONS:	No more than 1 bus on Route N44 should be scheduled to stand at any one time.
MEAL RELIEFS:	No meal relief vehicles to stand at any time.
FERRY VEHICLES:	No ferry vehicles to park on stand at any time.
BLIND DISPLAY:	Sutton Station.
OTHER INFORMATION:	Toilets available 0500 - 0100 so only available for a few hours to drivers of night route.

PART B - PERFORMANCE STATISTICS

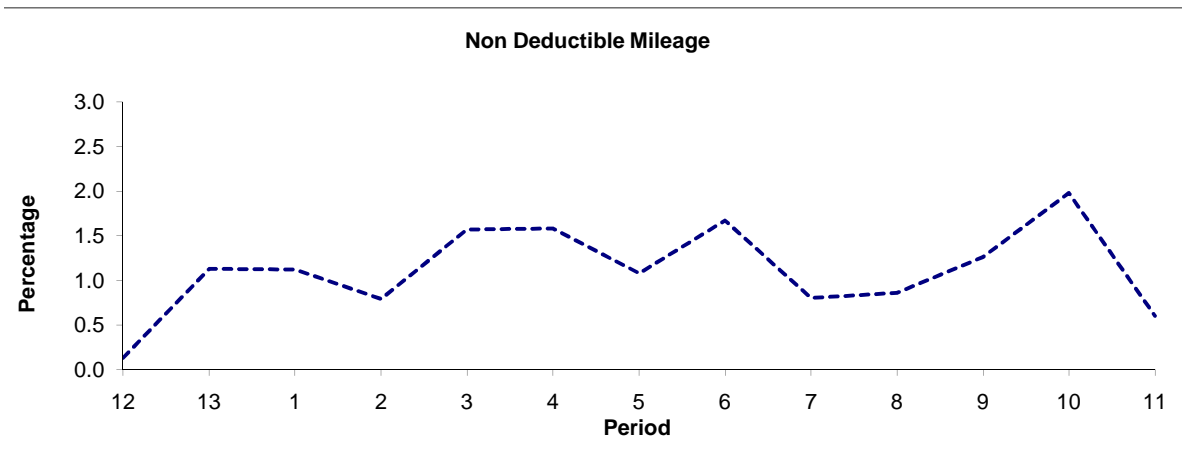
Route N44



Period	12	13	1	2	3	4	5	6	7	8	9	10	11
2010/2011	99.87	98.68	98.79	98.97	98.29	98.07	98.83	98.24	98.97	99.09	98.74	97.36	99.23
Min Standard	98.00	98.00	98.00	98.00	98.00	98.00	98.00	98.00	98.00	98.00	98.00	98.00	98.00



Period	12	13	1	2	3	4	5	6	7	8	9	10	11
2010/2011	0.00	0.19	0.09	0.24	0.14	0.35	0.09	0.09	0.23	0.05	0.00	0.66	0.17

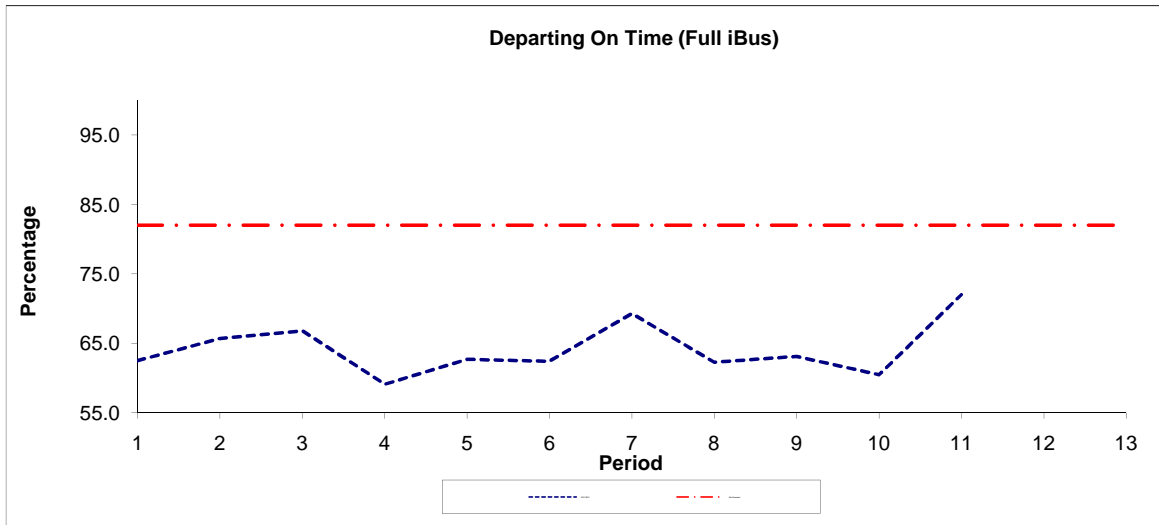


Period	12	13	1	2	3	4	5	6	7	8	9	10	11
2010/2011	0.13	1.13	1.12	0.79	1.57	1.58	1.08	1.67	0.80	0.86	1.26	1.98	0.60

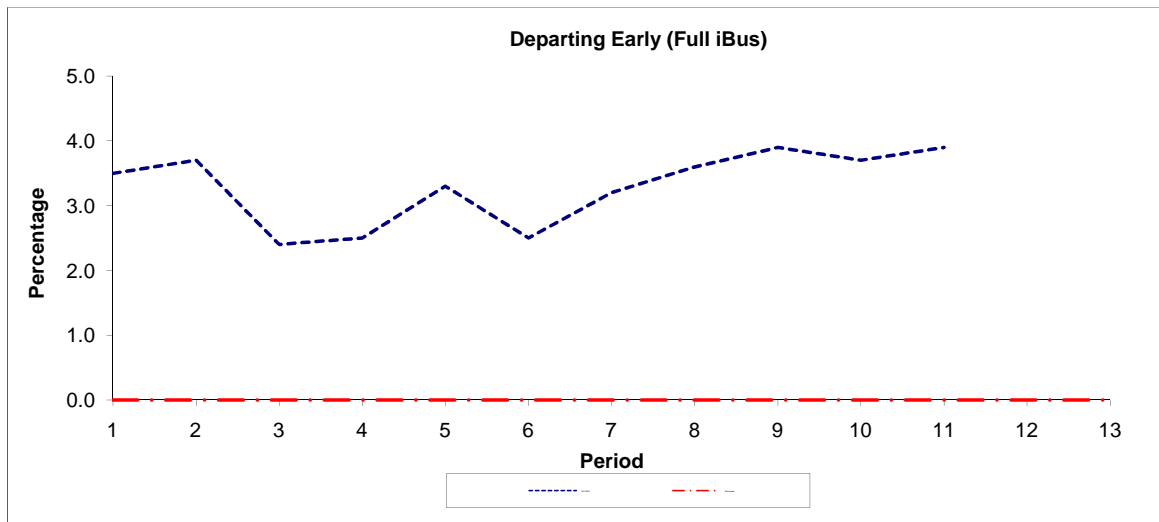
Note : Mileage is based on 4 weeks data

PART B - PERFORMANCE STATISTICS

Route N44



Period	1	2	3	4	5	6	7	8	9	10	11	12	13
2011/2012	62.50	65.70	66.80	59.10	62.70	62.40	69.30	62.30	63.10	60.50	72.00		
Min Standard	82.00	82.00	82.00	82.00	82.00	82.00	82.00	82.00	82.00	82.00	82.00	82.00	82.00



Period	1	2	3	4	5	6	7	8	9	10	11	12	13
2011/2012	3.50	3.70	2.40	2.50	3.30	2.50	3.20	3.60	3.90	3.70	3.90		
Benchmark	0.00	0.00	0.00	0.00	0.00	0.00	0.00	0.00	0.00	0.00	0.00	0.00	0.00

Note : Reliability is actual performance under full iBus (4 weeks data).
 Minimum Standards and Benchmarks are those applicable under the new contract.

ROUTE 44 - QUALITY OF SERVICE INDICATORS BY TIME OF DAY
QUARTERS 1 to 3 2011/12 (01/04/11 - 09/12/11) Based on Full iBus

MONDAY - FRIDAY

Time Period	Expected Buses	On AVL (%)	Scheduled Waiting Time (SWT) (mins)	Excess Waiting Time (EWT) (mins)	Actual Waiting Time (AWT) (mins)	Probability of Waiting < 10 mins (%)	Probability of Waiting 10-20 mins (%)	Probability of Waiting 20-30 mins (%)	Probability of Waiting > 30 mins (%)	Long Gaps (%)	Maximum Gap (mins)
0500 - 0700	18,299.	97.3	6.51	0.49	7.00	76.7	22.1	1.0	0.2	0.4	68.1
0700 - 1000	40,208.	96.2	5.02	1.08	6.10	82.4	16.1	1.2	0.3	1.5	51.4
1000 - 1300	40,062.	96.8	4.97	1.07	6.04	82.6	15.9	1.2	0.3	1.5	80.5
1300 - 1600	40,533.	96.5	4.89	1.32	6.22	80.6	17.3	1.7	0.4	2.2	68.8
1600 - 1900	40,493.	95.7	4.92	1.61	6.54	78.7	18.3	2.4	0.6	3.1	101.0
1900 - 2200	32,172.	97.6	5.95	1.42	7.36	71.1	25.0	3.2	0.7	2.3	70.2
2200 - 2400	17,479.	100.1	7.44	0.85	8.29	66.2	30.6	2.9	0.3	0.3	70.6
Summary	229,246.	96.8	5.21	1.27	6.48	79.0	18.7	1.9	0.4	2.0	101.0

SATURDAY

Time Period	Expected Buses	On AVL (%)	Scheduled Waiting Time (SWT) (mins)	Excess Waiting Time (EWT) (mins)	Actual Waiting Time (AWT) (mins)	Probability of Waiting < 10 mins (%)	Probability of Waiting 10-20 mins (%)	Probability of Waiting 20-30 mins (%)	Probability of Waiting > 30 mins (%)	Long Gaps (%)	Maximum Gap (mins)
0500 - 0700	2,425.	99.2	9.65	0.65	10.31	55.8	38.0	5.7	0.6	0.1	54.4
0700 - 1000	7,072.	96.1	5.94	1.03	6.97	76.0	22.7	1.2	0.1	0.5	75.9
1000 - 1300	8,255.	97.4	5.00	1.17	6.16	80.9	17.4	1.4	0.3	1.7	59.1
1300 - 1600	8,280.	98.3	5.00	1.30	6.30	80.9	17.4	1.5	0.2	1.7	57.7
1600 - 1900	8,288.	98.1	5.02	0.86	5.88	83.3	15.8	0.8	0.1	0.9	41.1
1900 - 2200	5,876.	98.8	6.81	1.18	7.99	66.0	29.9	3.5	0.7	1.2	59.5
2200 - 2400	3,632.	98.5	7.43	1.21	8.64	64.2	31.0	4.3	0.5	0.5	60.5
Summary	43,828.	97.9	5.56	1.11	6.67	77.6	20.4	1.7	0.3	1.2	75.9

SUNDAY AND BANK HOLIDAYS

Time Period	Expected Buses	On AVL (%)	Scheduled Waiting Time (SWT) (mins)	Excess Waiting Time (EWT) (mins)	Actual Waiting Time (AWT) (mins)	Probability of Waiting < 10 mins (%)	Probability of Waiting 10-20 mins (%)	Probability of Waiting 20-30 mins (%)	Probability of Waiting > 30 mins (%)	Long Gaps (%)	Maximum Gap (mins)
0500 - 0700	2,477.	98.3	9.99	0.41	10.41	52.5	41.2	5.9	0.4	0.0	42.7
0700 - 1000	5,224.	96.9	8.89	0.63	9.52	57.9	36.9	4.7	0.4	0.2	78.9
1000 - 1300	6,326.	99.1	7.42	0.82	8.24	64.3	31.8	3.3	0.6	0.6	61.7
1300 - 1600	6,478.	98.2	7.30	0.88	8.17	65.6	31.1	2.7	0.6	0.6	54.5
1600 - 1900	6,144.	98.7	7.29	0.85	8.14	65.2	31.5	2.8	0.4	0.5	61.2
1900 - 2200	6,199.	100.3	7.35	0.99	8.34	64.5	32.0	3.1	0.4	0.4	57.6
2200 - 2400	4,200.	99.8	7.44	0.72	8.16	67.2	30.3	2.2	0.3	0.3	64.0
Summary	37,048.	98.8	7.53	0.83	8.37	64.2	32.1	3.1	0.5	0.5	78.9

ALL DAYS

Time Period	Expected Buses	On AVL (%)	Scheduled Waiting Time (SWT) (mins)	Excess Waiting Time (EWT) (mins)	Actual Waiting Time (AWT) (mins)	Probability of Waiting < 10 mins (%)	Probability of Waiting 10-20 mins (%)	Probability of Waiting 20-30 mins (%)	Probability of Waiting > 30 mins (%)	Long Gaps (%)	Maximum Gap (mins)
0500 - 0700	23,201.	97.6	7.04	0.50	7.54	73.1	24.9	1.8	0.2	0.3	68.1
0700 - 1000	52,504.	96.2	5.29	1.06	6.35	80.6	17.8	1.4	0.3	1.3	78.9
1000 - 1300	54,643.	97.2	5.26	1.06	6.32	80.2	18.0	1.4	0.4	1.4	80.5
1300 - 1600	55,291.	97.0	5.17	1.27	6.44	79.1	18.8	1.8	0.4	1.9	68.8
1600 - 1900	54,925.	96.4	5.17	1.46	6.62	77.9	19.4	2.2	0.5	2.6	101.0
1900 - 2200	44,247.	98.1	6.21	1.34	7.55	69.7	26.4	3.2	0.7	1.9	70.2
2200 - 2400	25,311.	99.8	7.44	0.88	8.32	66.1	30.6	3.0	0.3	0.4	70.6
Summary	310,122.	97.2	5.48	1.21	6.69	77.4	20.2	2.0	0.4	1.8	101.0

ROUTE N44 - QUALITY OF SERVICE INDICATORS BY DAY OF WEE
QUARTERS 1 to 3 2011/12 (01/04/11 - 09/12/11) Based on Full iBus

Day Type (2400-0500 hours)	Expected Buses	% Observed	Departing On Time (%)	Non Arrival / Not Linked (%)	Departing 8 - 2.5 mins Early (%)	Departing 5 - 15 mins Late (%)
Monday - Friday morning *	37,728.	99.7	68.2	4.2	3.1	24.5
Saturday Morning	10,594.	98.3	61.3	6.3	3.0	29.4
Sunday Morning	10,827.	98.6	54.7	10.2	3.6	31.5
All Days	59,149.	99.2	63.8	6.0	3.2	27.1

* Includes Bank Holiday mornings

Transport for London - Mileage and QSI Locations

v2.0 - Mileage directly imported from Caesar

Route 44
 Service change 29155
 Date 17/11/2011

Reason for Issue	Diversion due to the Closure of Terminus Place
------------------	--

Version Detail

Locations shaded in blue denote QSI points under Full iBus

OUT DIRECTION					BACK DIRECTION				
Timing Point Code	Stop Number	Stop Name	Metres	Miles	Timing Point Code	Stop Number	Stop Name	Metres	Miles
VCSNVS	37303	Victoria Station			TOOTSN	434	Mitcham Road / Tooting Station		
	7817	Grosvenor Gardens / Victoria	179	0.11		3197	Amen Corner	169	0.11
VCCSBP	7819	Victoria Coach Station	451	0.28		R0275	Tooting / the Mitre	332	0.21
	BP4875	Ebury Bridge Road	384	0.24		8817	Bickley Street	239	0.15
	9425	Lister Hospital	380	0.24	TTBYMR	25286	Tooting Broadway Station	149	0.09
	9331	Chelsea Bridge	406	0.25	TTBYGL	BP3481	Garratt Lane / Tooting Broadway	209	0.13
	W18	Sopwith Way	349	0.22		8822	Fairlight Road	438	0.27
BTPKSN	9335	Battersea Park Station	327	0.20		8824	Streatham Cemetery	257	0.16
	25533	Battersea Medical Centre	246	0.15		8827	Wimbledon Road	210	0.13
	25531	Battersea Park Library	285	0.18		8828	Huntspill Street	243	0.15
	25529	Battersea Park School	508	0.32		8832	Burntwood Lane	337	0.21
	25527	The Latchmere	254	0.16		8835	Waldron Road	133	0.08
	R0280	Inworth Street	241	0.15		8836	Isis Street	404	0.25
BATTHS	25524	Battersea High Street	229	0.14		8838	Earlsfield Station	173	0.11
	BP4468	Badric Court	261	0.16	ESFDSN	8840	Earlsfield Road	288	0.18
	25520	York Gardens	436	0.27		8844	Henry Prince Estate	301	0.19
	25518	Hope Street	133	0.08		8846	Swaffield Road	385	0.24
	25514	Chatfield Road	224	0.14		8850	The Old Sergeant	349	0.22
	25512	Petergate	256	0.16		8852	Mapleton Road	216	0.13
	17947	Swandon Way	293	0.18	WANDSS	8854	Garratt Lane / Southside Shopping Centre	259	0.16
	LG05	Wandsworth Town Station	239	0.15		BP4164	Ram Street	236	0.15
	17945	Tonsley Street	140	0.09		17944	Tonsley Street	243	0.15
	33273	Wandsworth Town Hall	225	0.14		LG04	Wandsworth Town Station	259	0.16
WANDSS	13362	Garratt Lane / Southside Shopping Centre	424	0.26		25511	Swandon Way	130	0.08
	8853	Mapleton Road	224	0.14		25513	Petergate	266	0.17
	8851	The Old Sergeant	287	0.18		25515	Chatfield Road	350	0.22
	8847	Swaffield Road	370	0.23		25519	Hope Street	135	0.08
	8845	Henry Prince Estate	245	0.15		25522	York Gardens	294	0.18
ESFDSN	8841	Earlsfield Road	377	0.23		BP1010	Badric Court	265	0.16
	8839	Earlsfield Station	262	0.16	BATTHS	25523	Battersea High Street	141	0.09
	8837	Isis Street	258	0.16		25525	Bullen Street	277	0.17
	8834	Waldron Road	190	0.12		25528	The Latchmere	351	0.22
	BP3480	Burntwood Lane	164	0.10		25530	Battersea Park School	435	0.27
	8833	Summerstown	305	0.19		25532	Battersea Park Library	171	0.11
	8826	Wimbledon Road	349	0.22		25534	Macduff Road	269	0.17
	8825	Streatham Cemetery	274	0.17		25536	Battersea Medical Centre	304	0.19
	8823	Fairlight Road	303	0.19	BTPKSN	9334	Battersea Park Station	121	0.08
TTBYGL	8919	Tooting Broadway Station	348	0.22		W19	Sopwith Way	348	0.22
TTBYMR	25655	Mitcham Road / Tooting Broadway Stn	246	0.15		9330	Chelsea Bridge	389	0.24
	8816	Tooting / the Mitre	241	0.15		9420	Lister Hospital	370	0.23
	29679	Amen Corner	219	0.14		BP4876	Ebury Bridge Road	297	0.18
TOOTSN	435	Tooting Station	421	0.26	VCCSBP	7820	Victoria Coach Station	428	0.27
						35312	Eccleston Bridge	176	0.11
					VCSNBP	BP5458	Victoria Stn / Grosvenor Gardens	360	0.22
TOTAL ROUTE MILEAGE - OUT DIRECTION			11953 metres	7.43 miles	TOTAL ROUTE MILEAGE - BACK DIRECTION			11706 metres	7.27 miles

Transport for London - Mileage and QSI Locations

v2.0 - Mileage directly imported from Caesars

Route N44
 Service change 28136
 Date 28/05/2011

Reason for Issue	Mileage Update
------------------	----------------

Version Detail

Locations shaded in blue denote QSI points under Full iBus

OUT DIRECTION				
Timing Point Code	Stop Number	Stop Name	Metres	Miles
AWCHSM	34323	Aldwych / Somerset House		
	14627	Savoy Street	314	0.20
	7852	Bedford Street	238	0.15
	146	Trafalgar Square / Charing Cross Stn	273	0.17
TFSQWH	152	Whitehall / Trafalgar Square	240	0.15
	R0470	Horse Guards Parade	234	0.15
	BP5568	Westminster Stn / Parliament Square	209	0.13
	128	Great Smith Street / Westminster Abbey	662	0.41
	7864	New Scotland Yard	262	0.16
	20472	Westminster City Hall	212	0.13
	7861	Vauxhall Bridge Rd / Victoria Stn	257	0.16
VCSNVS	37303	Victoria Station	164	0.10
	7817	Grosvenor Gardens / Victoria	179	0.11
VCCSBP	7819	Victoria Coach Station	451	0.28
	BP4875	Ebury Bridge Road	384	0.24
	9425	Lister Hospital	380	0.24
	9331	Chelsea Bridge	406	0.25
	W18	Sopwith Way	349	0.22
BTPKSN	9335	Battersea Park Station	327	0.20
	25533	Battersea Medical Centre	246	0.15
	25531	Battersea Park Library	285	0.18
	25529	Battersea Park School	508	0.32
	25527	The Latchmere	254	0.16
	R0280	Inworth Street	241	0.15
BATTHS	25524	Battersea High Street	229	0.14
	BP4468	Badric Court	261	0.16
	25520	York Gardens	436	0.27
	25518	Hope Street	133	0.08
	25514	Chatfield Road	224	0.14
	25512	Petergate	256	0.16
	17947	Swandown Way	293	0.18
	LG05	Wandsworth Town Station	239	0.15
	17945	Tonsley Street	140	0.09
	33273	Wandsworth Town Hall	225	0.14
WANDSS	13362	Garratt Lane / Southside Shopping Centre	424	0.26
	8853	Mapleton Road	224	0.14
	8851	The Old Sergeant	287	0.18
	8847	Swaffield Road	370	0.23
	8845	Henry Prince Estate	245	0.15
ESFDSN	8841	Earlsfield Road	377	0.23
	8839	Earlsfield Station	262	0.16
	8837	Isis Street	258	0.16
	8834	Waldron Road	190	0.12
	BP3480	Burntwood Lane	164	0.10
	8833	Summerstown	305	0.19
	8826	Wimbledon Road	349	0.22
	8825	Streatham Cemetery	274	0.17
	8823	Fairlight Road	303	0.19
	8919	Tooting Broadway Station	348	0.22
TTBYMR	25655	Mitcham Road / Tooting Broadway Stn	246	0.15
	8816	Tooting / the Mitre	223	0.14
	29679	Amen Corner	238	0.15
TOOTSN	435	Tooting Station	421	0.26
	8813	Gorringe Park Avenue	407	0.25
	8811	London Road / Figge's Marsh	217	0.13
	8807	Eveline Road	377	0.23
	8803	Downe Road	491	0.31
MTCHFG	BP637	Mitcham Fair Green	289	0.18
	33892	Glebe Court	319	0.20
	33629	Mitcham / the Cricketers	432	0.27
	17571	Mitcham Tram Stop	437	0.27
	18553	Wandle Road	374	0.23
	4491	Peterborough Road	317	0.20
	18555	Green Wrythe Lane	334	0.21
	18557	Middleton Road	175	0.11
	18559	Netley Road	324	0.20
	18560	Bishopsford Road / Rose Hill Roundabout	305	0.19
STHRRH	4530	Rose Hill / Rose Hill Roundabout	244	0.15
	18563	Rosehill Park West	466	0.29
	18565	Cranleigh Gardens	362	0.22
SUTTGN	33809	Sutton Green	683	0.42
	6479	High Street / Marshalls Road	217	0.13
	35336	Benhill Avenue	205	0.13
	35510	Manor Place	186	0.12
	36521	Times Square	207	0.13
	14881	Sutton Police Station	246	0.15
	BP3452	Chalk Pit Way	105	0.07
	29910	Sutton Station	350	0.22
SUTTQ	35897	Sutton Station / the Quadrant	176	0.11

TOTAL ROUTE MILEAGE - OUT DIRECTION	23264 metres	14.46 miles
--	--------------	-------------

BACK DIRECTION				
Timing Point Code	Stop Number	Stop Name	Metres	Miles
SUTTQ	35897	Sutton Station / the Quadrant		
	4527	Sutton Station	451	0.28
	W41	Sutton Post Office	173	0.11
	35568	Sutton Civic Centre	420	0.26
	35570	St Nicholas Centre	355	0.22
	35573	Crown Road	387	0.24
SUTTGN	7594	Sutton Green	352	0.22
	4533	Cranleigh Gardens	570	0.35
	18562	Rosehill Park West	415	0.26
STHRRH	18561	Rose Hill / Rose Hill Roundabout	385	0.24
	4380	Bishopsford Road / Rose Hill Roundabout	353	0.22
	18558	Netley Road	177	0.11
	18556	Middleton Road	242	0.15
	18554	Green Wrythe Lane	431	0.27
	4490	Peterborough Road	171	0.11
	17569	Wandle Road	292	0.18
	17570	Mitcham Tram Stop	413	0.26
	17572	Gedge Court	240	0.15
	BP5365	Mitcham / the Cricketers	237	0.15
	BP5331	Glebe Court	572	0.36
MTCHFG	R0676	Raleigh Gardens	375	0.23
	20599	Downe Road	327	0.20
	8806	Eveline Road	279	0.17
	8810	London Road / Figge's Marsh	521	0.32
	8812	Gorringe Park Avenue	257	0.16
TOOTSN	16	Tooting Station	233	0.14
	434	Mitcham Road / Tooting Station	187	0.12
	3197	Amen Corner	169	0.11
	R0275	Tooting / the Mitre	332	0.21
	8817	Bickley Street	239	0.15
TTBYMR	25286	Tooting Broadway Station	149	0.09
	BP3481	Garratt Lane / Tooting Broadway	209	0.13
	8822	Fairlight Road	438	0.27
	8824	Streatham Cemetery	257	0.16
	8827	Wimbledon Road	210	0.13
	8828	Huntsmill Street	243	0.15
	8832	Burntwood Lane	337	0.21
	8835	Waldron Road	133	0.08
	8836	Isis Street	404	0.25
	8838	Earlsfield Station	173	0.11
ESFDSN	8840	Earlsfield Road	288	0.18
	8844	Henry Prince Estate	301	0.19
	8846	Swaffield Road	385	0.24
	8850	The Old Sergeant	349	0.22
	8852	Mapleton Road	216	0.13
WANDSS	8854	Garratt Lane / Southside Shopping Centre	259	0.16
	BP4164	Ram Street	236	0.15
	17944	Tonsley Street	243	0.15
	LG04	Wandsworth Town Station	259	0.16
	25511	Swandown Way	130	0.08
	25513	Petergate	266	0.17
	25515	Chatfield Road	350	0.22
	25519	Hope Street	135	0.08
	25522	York Gardens	294	0.18
	BP1010	Badric Court	265	0.16
BATTHS	25523	Battersea High Street	141	0.09
	25525	Bullen Street	277	0.17
	25528	The Latchmere	351	0.22
	25530	Battersea Park School	435	0.27
	25532	Battersea Park Library	171	0.11
	25534	Macduff Road	269	0.17
BTPKSN	25536	Battersea Medical Centre	304	0.19
	9334	Battersea Park Station	121	0.08
	W19	Sopwith Way	348	0.22
	9330	Chelsea Bridge	389	0.24
	9420	Lister Hospital	370	0.23
	BP4876	Ebury Bridge Road	297	0.18
VCCSBP	7820	Victoria Coach Station	428	0.27
	35312	Eccleston Bridge	176	0.11
VCSNBP	BP5458	Victoria Stn / Grosvenor Gardens	360	0.22
	14973	Westminster Cathedral	850	0.53
	20434	Westminster City Hall	241	0.15
	7863	New Scotland Yard	147	0.09
	20179	Westminster Abbey	340	0.21
	996	Parliament Square	493	0.31
	7867	Horse Guards Parade	232	0.14
TFSQCC	BP3505	Trafalgar Square / Charing Cross Stn	544	0.34
	7853	Southampton Street	398	0.25
AWCHWA	20983	Aldwych / Drury Lane	381	0.24

TOTAL ROUTE MILEAGE - BACK DIRECTION	24147 metres	15.00 miles
---	--------------	-------------