

SECTION 2: PART A

SERVICE SPECIFICATION FOR ROUTE Nos. 57 & N57

CONTENTS

	Page
1. Tenders Required	2
2. Proposed Changes	2
3. Terminals	2
4. Days of Operation	3
5. Vehicle Type	3
6. Frequencies	4
7. Minimum Performance Standards	11
8. Running Times	12
9. Layovers	12
10. Timing Constraints	12
11. Control Strategy	13
12. Operational Considerations	13
13. Stopping Arrangements	14
14. Timing Points and Mileages	15
15. Vehicle Livery	16
 <u>Appendices</u>	
A. Route Record	17
B. Sample Running Times for Route Nos. 57 & N57	22

This document should be read in conjunction with the Corporation's Guide for Tenderers (Part A: Explanatory Notes - Service Requirements). Where appropriate, reference is made to the relevant section.

1. TENDERS REQUIRED

This document describes the service for which the Corporation requires Tenders and Tenderers **must** submit a fully compliant bid. In addition, Tenderers **may** wish to draw upon their local knowledge to submit alternative bids which offer improved value for money in meeting passenger needs. These might incorporate, for example, different timings, frequencies, route structures and/or vehicles. The Corporation will welcome such bids and give them careful consideration.

For more information, please refer to Section 2.1 of Part A of the Guide for Tenderers.

2. PROPOSED CHANGES

At this time, no changes are proposed to the existing service for introduction prior to the commencement of the new Route Agreement for Route Nos. 57 & N57.

Tenderers should note that the following alterations (subject to consultation) are proposed as part of this Service Specification for introduction with the new Route Agreement:

- Daily early morning frequencies are increased from every 30 minutes to every 20 minutes.
- The Mondays to Fridays short working journey between Wimbledon Station and Kingston, Fairfield Bus Station at 0720 is withdrawn. This journey is covered by the 10 minute frequency band commencing at 0615.
- Changes to the traffic day for Route Nos. 57 & N57 to improve day/night interface.
- The designation Route No. N57 is used for contractual purposes only. This service will be marketed as Route No. 57. This includes all publicity, including destination blind displays.
- **Tenderers must identify the cost of the Nightly element of this service separately.**
- Boxing Day frequencies are specified at Sunday frequency levels but with a later start. **Tenderers must include the cost of the Boxing Day element of this service within Section 4.1 of their tender bid. Tenderers must also identify the cost of the Boxing Day element of this service separately.**

3. TERMINALS

Route Nos. 57 & N57 will operate between Kingston, Fairfield Bus Station and Clapham Park, Atkins Road.

Full details of the route to be followed, the permitted terminal workings and the available stands are shown at Appendix A. Tenderers should particularly note the information relating to the shared usage of stands, the taking of meal reliefs and the use of ferry vehicles.

4. DAYS OF OPERATION

One timetable must be offered for Route Nos. 57 & N57 which will operate as follows:

DAY OF OPERATION	
Mondays to Fridays	Section 6.1
Mondays to Fridays Schooldays	Section 6.2
Saturdays & Good Friday	Section 6.3
Sundays	Section 6.4
Christmas Day	No service
Boxing Day	Section 6.5
Other Public Holidays	Sunday service
Nightly	Section 6.6

* The New Year’s Eve service level should be regarded as a minimum and any frequency increases and/or diversions will be discussed with the successful Tenderer on an annual basis.

5. VEHICLE TYPE

Please refer to Section 2.5 of Part A of the Guide for Tenderers.

Route Nos. 57 & N57 are currently approved for vehicles which are a maximum of 9.9 metres long and 2.55 metres wide. A formal route test will be required for vehicles which exceed these dimensions. This will be arranged with the successful Tenderer.

The service requirement set out in Section 6 assumes that dual door, double deck buses with a minimum capacity of 87 of which approximately 60 should be seated, will be used on this route. Luggage space should also be provided.

Tenderers must submit proposals based on new vehicles. These must be of a low floor design and be accessible to wheelchairs by means of a powered ramp.

Tenderers should refer to the vehicle design (including accessibility) features contained in Schedule II to Annex B of the Framework Agreement and Section 2 Part B of the Master ITT (Version 2 issued June 2005).

Tenderers may also submit bids based on using existing vehicles. Tenderers are asked to specify what refurbishment would be carried out on existing buses and the expected timescale of those works. See Master ITT (Version 2 issued June 2005).

6. FREQUENCIES

The level of service (e.g. every 15 minutes) required by the Corporation is described in terms of the interval between departures. Whilst a completely regular service at the specified frequency should be possible at most times, occasionally a bus may be timetabled to depart up to five minutes earlier or later than the regular time. In addition, journeys with specific start or finish times are required. These times must be adhered to.

Tenderers should note that when the specified frequency changes (e.g. between the peak and midday periods), the scheduled interval between buses should never be greater than that provided by the lower of the two frequencies **AT ANY POINT ON THE ROUTE.**

Tenderers should note that unless otherwise stated **all** journeys should operate between the terminal points defined in each direction.

The journeys shown in Section 6.2 are specifically designed to meet the start and finish times of Ursuline High School. It is possible that these times may be altered during the life of the contract. Tenderers should indicate whether they are able to adjust the times of the specified journeys by up to 20 minutes (earlier or later) without alteration to the contract price. It may also be necessary for afternoon journeys to operate earlier than stated at the end of term and on other occasions at short notice.

6.1 Mondays to Fridays

1. Kingston, Fairfield Bus Station to Clapham Park, Atkins Road

0415 - 0530	Every 20 minutes
0531 - 0615	Every 15 minutes
0616 - 0645	Every 10 minutes
0646 - 1900	Every 8 minutes
1901 - 2000	Every 10 minutes
2001 - 0045	Every 12 minutes

First departure from Kingston, Fairfield Bus Station no later than 0420.
Last departure from Kingston, Fairfield Bus Station no earlier than 0040.

Tenderers should ensure that buses are scheduled to be no more than 8 minutes apart at Tooting Broadway Station between 0725 and 0900 and between 1445 and 1630

2. Clapham Park, Atkins Road to Kingston, Fairfield Bus Station

0415 - 0530	Every 20 minutes
0531 - 0615	Every 15 minutes
0616 - 0655	Every 10 minutes
0656 - 1855	Every 8 minutes
1856 - 1935	Every 10 minutes
1936 - 0045	Every 12 minutes

First departure from Clapham Park, Atkins Road no later than 0420.
Last departure from Clapham Park, Atkins Road no earlier than 0040.

Tenderers should ensure that buses are scheduled to be no more than 8 minutes apart at Wimbledon Station between 0730 and 0900 and between 1500 and 1630.

6.2 Mondays to Fridays Schooldays

1. Ursuline School, Worple Road to Clapham Park, Atkins Road

1515 One journey

2. Wimbledon Station to Kingston, Fairfield Bus Station

0732 One journey

6.3 Saturdays & Good Friday

1. Kingston, Fairfield Bus Station to Clapham Park, Atkins Road

0415 - 0540	Every 20 minutes
0541 - 0655	Every 15 minutes
0656 - 0810	Every 10 minutes
0811 - 1820	Every 8 minutes
1821 - 1920	Every 10 minutes
1921 - 0045	Every 12 minutes

First departure from Kingston, Fairfield Bus Station no later than 0420.
Last departure from Kingston, Fairfield Bus Station no earlier than 0040.

Tenderers should ensure that buses are scheduled to be no more than 8 minutes apart at Tooting Broadway Station between 0850 and 1150.

2. Clapham Park, Atkins Road to Kingston, Fairfield Bus Station

0415 - 0615	Every 20 minutes
0616 - 0645	Every 15 minutes
0646 - 0810	Every 10 minutes
0811 - 1810	Every 8 minutes
1811 - 1910	Every 10 minutes
1911 - 0045	Every 12 minutes

First departure from Clapham Park, Atkins Road no later than 0420.
Last departure from Clapham Park, Atkins Road no earlier than 0040.

Tenderers should ensure that buses are scheduled to be no more than 8 minutes apart at Wimbledon Station between 0840 and 1140.

6.4 Sundays

1. Kingston, Fairfield Bus Station to Clapham Park, Atkins Road

0415 - 0740	Every 20 minutes
0741 - 0840	Every 15 minutes
0841 - 0045	Every 12 minutes

First departure from Kingston, Fairfield Bus Station no later than 0420.
Last departure from Kingston, Fairfield Bus Station no earlier than 0040.

Tenderers should ensure that buses are scheduled to be no more than 12 minutes apart at Tooting Broadway Station between 1020 and 1155.

2. Clapham Park, Atkins Road to Kingston, Fairfield Bus Station

0415 - 0740	Every 20 minutes
0741 - 0840	Every 15 minutes
0841 - 0045	Every 12 minutes

First departure from Clapham Park, Atkins Road no later than 0420.
Last departure from Clapham Park, Atkins Road no earlier than 0040.

Tenderers should ensure that buses are scheduled to be no more than 12 minutes apart at Wimbledon Station between 1025 and 1150.

6.5 Boxing Day

1. Kingston, Fairfield Bus Station to Clapham Park, Atkins Road

0755 - 0840 Every 15 minutes
0841 - 0045 Every 12 minutes

First departure from Kingston, Fairfield Bus Station no later than 0800.
Last departure from Kingston, Fairfield Bus Station no earlier than 0040.

Tenderers should ensure that buses are scheduled to be no more than 12 minutes apart at Tooting Broadway Station between 1020 and 1155.

2. Clapham Park, Atkins Road to Kingston, Fairfield Bus Station

0755 - 0840 Every 15 minutes
0841 - 0045 Every 12 minutes

First departure from Clapham Park, Atkins Road no later than 0800.
Last departure from Clapham Park, Atkins Road no earlier than 0040.

Tenderers should ensure that buses are scheduled to be no more than 12 minutes apart at Wimbledon Station between 1025 and 1150.

Tenderers must identify the cost of the Boxing Day element of this service separately.

6.6 Nightly

1. Kingston, Fairfield Bus Station to Clapham Park, Atkins Road

0055 - 0405 Every 30 minutes

First departure from Kingston, Fairfield Bus Station no later than 0100.
Last departure from Kingston, Fairfield Bus Station no earlier than 0400.

2. Clapham Park, Atkins Road to Kingston, Fairfield Bus Station

0055 - 0405 Every 30 minutes

First departure from Clapham Park, Atkins Road no later than 0100.
Last departure from Clapham Park, Atkins Road no earlier than 0400.

Tenderers must identify the cost of the Boxing Day element of this service separately.

7. MINIMUM PERFORMANCE STANDARDS

Please refer to Section 2.7 of Part A of the Guide for Tenderers.

Tenderers should note that the objective of the Operator of Route Nos. 57 & N57 shall be to operate all scheduled mileage and adhere **fully** to the published timetable. The Operator must use its best endeavours to achieve this.

The **minimum** standards of acceptable performance for Route No. 57 shall be:

Average Excess Wait Time:	No more than 1.30 minutes
Minimum Operated Mileage:	No less than 98.00%

The **minimum** standards of acceptable performance for Route No. N57 shall be:

Departing on Time	No less than 85.00%
Minimum Operated Mileage	No less than 99.00%

or as notified by the Corporation from time to time. The Operator will be required to achieve or better the standards.

QSI Thresholds

The QSI threshold is the standard of performance to be achieved by the operator in order to qualify for an automatic contract extension (in accordance with Schedule IX of the Framework Agreement).

Average Excess Wait Time Threshold = 1.15 minutes

It is unlikely that the minimum number of QSI surveys for Threshold measurement will be conducted on Route No. N57 at present. However, this may change at a later date when a threshold figure may be published.

Summary of proposed QSI coverage: Route Nos. 57 & N57

Note: While London Buses undertakes to carry out QSI surveys at the times and locations specified below, it may prove impossible to rearrange a survey cancelled or nullified at short notice.

Survey locations

Towards Clapham Park, Atkins Road	Towards Kingston, Fairfield Bus Station
Kingston	Streatham, St Leonards
Raynes Park \$	Tooting Broadway
Wimbledon	Wimbledon
Tooting Broadway	Raynes Park \$

\$ Both directions observed simultaneously at this point. Counted as two surveys.

Total scheduled manual QSI surveys per quarter = 128.

8. RUNNING TIMES

Extracts from the public timetable with sample running times for Route Nos. 57 & N57 are attached at Appendix B. This gives an indication of the time required to travel the route. Attention is drawn to the variations in running times at different times of the day. Please refer to Section 2.8 of Part A of the Guide for Tenderers for further information.

Tenderers should carefully check the existing running times to ensure that they are appropriate in present traffic conditions. Tenderers should particularly check the existing running times for the Mondays to Fridays morning interpeak and PM peak and the Saturday afternoon shopping period.

It is expected that any changes to these running times can be accommodated within existing cycle times.

When reviewing existing, and devising new, running times Tenderers should refer to:

- the minimum performance standards for Route Nos. 57 & N57 in Section 7 above;
- the historical performance data provided in Section 1 Part B of the introduction to this ITT;
- the paragraph in Section 12 referring to the proposed extension of the Cashless Boarding zone throughout the whole of the London area.

Tenderers may consider if school summer holiday schedules, incorporating running time reductions, are desirable for this route. In this event, schedules and costs must be submitted separately.

9. LAYOVERS

Under normal circumstances, layover time on stands and at bus stations should be restricted to that required to provide a reliable service. Longer layovers for any other purpose may only be taken with the permission of the Corporation.

10. TIMING CONSTRAINTS

Route No. 57 should interwork with Route No. N57 to provide a seamless 24 hour service.

Route No. 57 should interwork with Route No. 131 between Ursuline School, Worple Road and Tooting Broadway Station at all times.

Route No. 57 should interwork with Route No. 333 between Tooting Broadway Station and Streatham Hill, Telford Avenue on all evenings and Sunday daytimes and be best separated at all other times.

Tenderers submitting bids should bear this requirement in mind when compiling schedules. This requirement will be negotiated with the successful Tenderer for this route to ensure that optimal interworking/separation is delivered within its schedules.

11. CONTROL STRATEGY

Route Nos. 57 & N57 can suffer from the effects of traffic congestion, making some form of route control essential in order to achieve or better the minimum performance standards for this route.

Tenderers should submit proposals on the control strategy they intend to adopt and the type of control they would intend to use by completing the form provided in Section 3: Part 7 of this ITT. The cost of this control should be included within the main Tender price.

Tenderers should also indicate how they intend to facilitate driver changeovers and meal reliefs for this route.

Further information is provided in Section 2.11 of Part A of the Guide for Tenderers.

12. OPERATIONAL CONSIDERATIONS

Tenderers should note the following operating considerations affecting Route Nos. 57 & N57:

- Route No. 57 links several town centres and is therefore subject to unpredictable and variable traffic conditions;
- Route No. 57 can sometimes suffer from unpredictable and severe delays caused by the annual Wimbledon Tennis Championships (usually held in late June / early July each year).

Tenderers should also note the following factors/events which may have an impact on Route Nos. 57 & N57 in the foreseeable future:

- It is anticipated that Cashless Boarding will be extended throughout London at some stage during the lifetime of this contract. **This is expected to lead to significant savings in running and recovery times to bus routes, and, therefore, potential resource (cycle time and PVR) savings are expected. Tenderers are required to identify and submit the level of savings per vehicle that could be achieved by reducing peak vehicle requirement, and/or how reliability targets could be revised when the Scheme is introduced.**

The above factors have been included to assist Tenderers and represents the information currently available to the Corporation. Tenderers should make their own enquiries about events which may impact upon the route and should form their own views about their likely effect upon it.

13. STOPPING ARRANGEMENTS

Buses operating on Route Nos. 57 & N57 must serve all stops on the line of route designated for the route. There are two types of bus stop:

- Compulsory (white stop flag): where all buses must stop.
- Request (red stop flag): where buses are only required to stop if a passenger rings the bell or an intending passenger signals to the driver.

On all night routes (with N prefix) and on 24 hour routes (between the hours of 0100 and 0430) all bus stops are regarded as request stops regardless of their type.

Tenderers should note that there are proposals (subject to consultation) to remove the distinction between compulsory and request stops. If approved, the successful Tenderer will be advised of these changes in detail.

14. TIMING POINTS & MILEAGES

Timing Points

Buses should be timed at the following points:

Route Nos. 57 & N57

Kingston *Fairfield Bus Station*

Kingston Cromwell Road Bus Station

Norbiton Church

Coombe Lane West Traps Lane

Raynes Park Station Raynes Park Hotel

Ursuline School Worple Road

Wimbledon Station

South Wimbledon Station

Merton Abbey Sainsburys

Tooting Broadway Station

Mitcham Lane Streatham Road

Streatham Hill St. Leonards Church

Streatham Hill Telford Avenue

Atkins Road *New Park Road*

Poynders Road *Kings Avenue*

Streatham Hill Telford Avenue

Streatham Hill St. Leonards Church

Mitcham Lane Streatham Road

Tooting Broadway Station

Merton Abbey Sainsburys

South Wimbledon Station

Wimbledon Station

Ursuline School Worple Road

Raynes Park Station Raynes Park Hotel

Coombe Lane West Traps Lane

Norbiton Church

Kingston *Fairfield Bus Station*

Mileages for Route Nos. 57 & N57

Kingston, Fairfield Bus Station to Clapham Park, Atkins Road 11.6 miles

Clapham Park, Atkins Road to Kingston, Fairfield Bus Station 11.3 miles

Ursuline School, Worple Road to Clapham Park, Atkins Road 6.8 miles

Wimbledon Station to Kingston, Fairfield Bus Station 5.1 miles

Tenderers should note that:

- these measurements are believed to be accurate to within 0.5 miles, but no warranty or representation as to accuracy is given;
- out of service stand workings have not been measured and are not included within the above measurements;
- if alternative or additional measurements are used by the Tenderer, these must be stated in the tender submission;
- point to point measurements pertaining to recognised curtailment points or alternative terminals will be agreed with the successful Tenderer once the contract has been awarded.

15. VEHICLE LIVERY

All vehicles to be used on Route Nos. 57 & N57 from the commencement of the new Route Agreement must be in a livery that is exclusively Corporation red. The paint should be matched accurately to the colour as defined by the following manufacturer's specifications:

ICI London Bus Red P498 FPF 3

Other manufacturers should also be able to produce this specification from the ICI colour chart.

This requirement does not include the lower panels which may be in a different colour but which shall not exceed 50cm in height, or the rooftop which should be painted white so as to reduce temperatures inside the vehicle during the summer months.

The positioning and size of Operators' logos are to be agreed between the Operator and the Corporation and, where possible, these should be above the front doors on the nearside of the vehicles and above the drivers' offside cab windows.

All livery proposals must be submitted to the Contracts Tendering Manager for approval.

APPENDIX A: ROUTE RECORD

ROUTE Nos. 57 & N57: KINGSTON, FAIRFIELD BUS STATION - CLAPHAM PARK, POYNDERS ROAD

STREETS TRAVERSED

Towards Clapham Park, Atkins Road: Fairfield North, Wheatfield Way, Ashdown Road, Eden Street, Clarence Street, Cromwell Road, Queen Elizabeth Road, London Road, Kingston Hill, Galsworthy Road, Coombe Lane West, Coombe Lane Flyover, Coombe Lane, Lambton Road, Worple Road, Wimbledon Hill Road, Wimbledon Bridge, The Broadway, Merton Road, Merton High Street, Collier's Wood High Street, Tooting High Street, Tooting Broadway, Mitcham Road, Southcroft Road, Mitcham Lane, Streatham High Road, Streatham Hill, Streatham Place, Atkins Road.

Towards Kingston, Fairfield Bus Station: Poynders Road, Atkins Road, Streatham Place, Streatham Hill, Streatham High Road, Mitcham Lane, Southcroft Road, Mitcham Road, Tooting Broadway, Tooting High Street, Collier's Wood High Street, Merton High Street, Merton Road, The Broadway, Gladstone Road, Bus turning area, Sir Cyril Black Way, Hartfield Road, Wimbledon Bridge, Wimbledon Hill Road, Worple Road, Pepys Road, Coombe Lane, Coombe Lane Flyover, Coombe Lane West, Galsworthy Road, Kingston Hill, London Road, Fairfield North, Fairfield Bus Station.

STANDS, TURNING POINTS AND DESTINATION BLINDS

Tenderers should note that under normal circumstances, the specific restrictions relating to each stand will apply to the whole stand at all times. Any variation to such standing arrangements must be agreed by the Corporation. In addition, Tenderers should note the following general requirements:

- 1) Drivers MUST switch off engines during layover periods at bus stations or on stands.
- 2) No meal reliefs may be taken on any stand (on or off line of route) without the permission of the Corporation.
- 3) No crew ferry vehicles may enter any stand (on or off line of route) without the permission of the Corporation.
- 4) Destination blind displays to be used are shown under each stand description. Tenderers may suggest, within their bids, alternative blind displays.
- 5) The intermediate (also known as via) blind display to be used on the nearside of the vehicle is shown in the box below:

57 via Wimbledon

For further information, please refer to Annex C of the Framework Agreement: General Conditions relating to the use of London Buses' Bus Stations and Stands.

KINGSTON, FAIRFIELD BUS STATION

Private stand in bus station on south side of Fairfield North.

Buses proceed from Fairfield North via Fairfield Bus Station to stand, departing via Fairfield Bus Station to Fairfield North. Set down and pick up in Fairfield North, at stop B1.

AVAILABILITY:	At any time.
OPERATING RESTRICTIONS:	No more than 2 vehicles on Route Nos. 57 & N57 should be scheduled to stand at any one time.
MEAL RELIEFS:	No meal relief vehicles to stand at any time.
FERRY VEHICLES:	No ferry vehicles to park on stand at any time.
OTHER INFORMATION:	London Buses toilet facilities available 24 hours a day. Buses must be fitted with an audible reverse warning device.
BLIND DISPLAY:	Kingston

LONDON ROAD, KINGSTON (from Clapham Park, Atkins Road)

Public stand on north side of London Road, commencing 57 metres east of the junction with Queen Elizabeth Road, outside Tiffin School.

Buses proceed from London Road via Birkenhead Avenue, Queen Elizabeth Road and London Road to stand, departing to London Road. Set down in London Road, at stop NS and pick up in London Road, at stop C1.

AVAILABILITY:	At any time.
OPERATING RESTRICTIONS:	To be used for unscheduled curtailments only.
MEAL RELIEFS:	No meal relief vehicles to stand at any time.
FERRY VEHICLES:	No ferry vehicles to park on stand at any time.
BLIND DISPLAY:	Norbiton Church

COOMBE LANE, BEVERLEY WAY (from Clapham Park, Atkins Road)

Buses proceed from Coombe Lane via Coombe Lane Flyover, Coombe Lane West, Beverley Way, Robin Hood Way (Kingston By Pass), Coombe Lane West (slip road) and Coombe Lane Flyover departing to Coombe Lane. Set down and pick up in Coombe Lane.

AVAILABILITY:	At any time.
OPERATING RESTRICTIONS:	Turning Point Only - Buses must not stand.
BLIND DISPLAY:	Coombe Lane

URSULINE SCHOOL, WORPLE ROAD

Buses enter service in Worples Road.

AVAILABILITY:	At any time.
OPERATING RESTRICTIONS:	Turning point only - Buses must not wait for longer than is necessary to pick up passengers at this stop.

RAYNES PARK, WORPLE ROAD

Public stand on south side of Pepys Road, commencing 35 metres south of the junction with Worple Road.

From Kingston, Fairfield Bus Station

Buses proceed from Worple Road via Pepys Road to stand, departing via Pepys Road to Coombe Lane. Set down in Worple Road, at stop D and pick up in Coombe Lane, at stop H.

From Streatham Hill, Atkins Road

Buses proceed from Worple Road via Pepys Road to stand, departing via Pepys Road, Coombe Lane, Lambton Road and Worple Road. Set down in Worple Road, at stop G and pick up in Worple Road, at stop D.

AVAILABILITY: At any time.
OPERATING RESTRICTIONS: To be used for unscheduled curtailments only.
MEAL RELIEFS: No meal relief vehicles to stand at any time.
FERRY VEHICLES: No ferry vehicles to park on stand at any time.
BLIND DISPLAY: Raynes Park

WIMBLEDON, FRANCIS GROVE (from Clapham Park, Atkins Road)

Public stand for one bus in bay on south side of Francis Grove.
Buses proceed from Hartfield Road via Wimbledon Bridge, St George's Road and Francis Grove to stand, departing via Francis Grove to Worple Road. Set down in Hartfield Road, at stop L and pick up in Worple Road, at stop N.

AVAILABILITY: At any time.
OPERATING RESTRICTIONS: To be used for unscheduled curtailments only.
MEAL RELIEFS: No meal relief vehicles to stand at any time.
FERRY VEHICLES: No ferry vehicles to park on stand at any time.
BLIND DISPLAY: Wimbledon

WIMBLEDON, SIR CYRIL BLACK WAY (from Kingston, Fairfield Bus Station)

Public stand in bus turning area on north side of Sir Cyril Black Way.
Buses proceed from Wimbledon Bridge via The Broadway, Gladstone Road and Bus turning area to stand, departing to Bus turning area. Set down in Wimbledon Bridge, at stop D and pick up in Bus turning area, at stop F.

AVAILABILITY: At any time.
OPERATING RESTRICTIONS: To be used for unscheduled curtailments only.
MEAL RELIEFS: No meal relief vehicles to stand at any time.
FERRY VEHICLES: No ferry vehicles to park on stand at any time.
BLIND DISPLAY: Wimbledon

COLLIERS WOOD, PRIORY ROAD (from Kingston, Fairfield Bus Station)

Bus stop on west side of Priory Road.

Buses proceed from Merton High Street via Priory Road to stand, departing via Priory Road, Christchurch Road and Collier's Wood High Street to Merton High Street. Set down in Merton High Street, at stop E and pick up in Merton High Street, at stop G.

AVAILABILITY: At any time.
OPERATING RESTRICTIONS: To be used for unscheduled curtailments only
MEAL RELIEFS: No meal relief vehicles to stand at any time.
FERRY VEHICLES: No ferry vehicles to park on stand at any time.
BLIND DISPLAY: Colliers Wood

TOOTING BROADWAY, LONGMEAD ROAD (from Kingston, Fairfield Bus Station)

Public stand for six buses in Longmead Road in three parts:

1. On north side of Longmead Road for three buses, commencing at a point 11 metres south of No 2 Longmead Road and extending 30 metres.
2. In the centre of Longmead Road for 2 buses standing abreast.
3. On south side of Longmead Road for one bus, commencing at a point 14 metres east of eastern building line of Mitcham Road and extending 20 metres.

Buses proceed from Tooting High Street via Tooting Broadway and Longmead Road to stand, departing via Longmead Road and Tooting Broadway to Tooting High Street. Set down in Tooting High Street, at stop L and pick up in Tooting High Street, at stop K.

AVAILABILITY: At any time.
OPERATING RESTRICTIONS: To be used for unscheduled curtailments only.
MEAL RELIEFS: No meal relief vehicles to stand at any time.
FERRY VEHICLES: No ferry vehicles to park on stand at any time.
BLIND DISPLAY: Tooting Broadway

STREATHAM, ST LEONARDS CHURCH (from Kingston, Fairfield Bus Station)

Public stand for two buses on the south side of Ambleside Avenue, commencing 35 metres north of Gleneagle Road and 23 metres south of Babington Road.

Buses proceed from Mitcham Lane via Streatham High Road, Gleneagle Road and Ambleside Avenue to stand, departing via Ambleside Avenue and Tooting Bec Gardens to Mitcham Lane. Set down in Mitcham Lane, at stop ST and pick up in Mitcham Lane, at stop SL.

AVAILABILITY: At any time.
OPERATING RESTRICTIONS: To be used for unscheduled curtailments only
MEAL RELIEFS: No meal relief vehicles to stand at any time.
FERRY VEHICLES: No ferry vehicles to park on stand at any time.
BLIND DISPLAY: Streatham, St Leonard's Church

STREATHAM HILL STATION (from Kingston, Fairfield Bus Station)

Buses proceed from Streatham High Road via Streatham Hill, Sternhold Avenue, Bridge to Sternhold Avenue and Drewstead Road departing to Streatham High Road. Set down in Streatham High Road, at stop K and pick up in Streatham High Road, at stop J.

AVAILABILITY: At any time.
OPERATING RESTRICTIONS: **Turning Point Only - Buses must not stand.**
BLIND DISPLAY: Streatham Hill Station

CLAPHAM PARK, ATKINS ROAD

Offside public stand on the north side of Atkins Road immediately west of the junction with Kings Avenue and extending 50 metres west.

Buses proceed from Atkins Road direct to stand, departing via Atkins Road to Poynders Road. Set down in Atkins Road, at alighting point and pick up in Poynders Road.

AVAILABILITY: At any time.
OPERATING RESTRICTIONS: No more than **3** vehicles on Route Nos. 57 & N57 should be scheduled to stand at any one time.
MEAL RELIEFS: No meal relief vehicles to stand at any time.
FERRY VEHICLES: No ferry vehicles to park on stand at any time.
OTHER INFORMATION: London Buses toilet facilities available 24 hours a day.
BLIND DISPLAY: Clapham Park

APPENDIX B: SAMPLE RUNNING TIMES FOR ROUTE No. 57

(based on current schedule)

MONDAYS TO FRIDAYS**1. Kingston, Fairfield Bus Station to Atkins Road, New Park Road**

	Typical early morning	Longest morning peak	Typical interpeak	Longest afternoon peak	Typical evening	Typical late evening
Kingston Fairfield Bus Station	0415	0803	1235	1701	2007	2307
Kingston Cromwell Road Bus Station	0419	0808	1241	1707	2012	2312
Norbiton Church	0421	0810	1243	1709	2014	2314
Coombe Lane West Traps Lane	0427	0820	1251	1719	2020	2320
Raynes Park Station Raynes Park Hotel	0431	0829	1258	1727	2025	2325
Ursuline School Worple Road	0433	0832	1301	1730	2027	2327
Wimbledon Station	0437	0840	1307	1737	2032	2332
South Wimbledon Station	0441	0847	1313	1744	2037	2336
Merton Abbey Sainsbury's	0443	0850	1316	1747	2039	2338
Tooting Broadway Station	0448	0859	1323	1756	2045	2343
Streatham Hill St. Leonards Church	0459	0915	1337	1813	2057	2354
Streatham Hill Telford Avenue	0504	0924	1344	1821	2103	2359
Atkins Road New Park Road	0506	0926	1346	1823	2105	0001
	51 minutes	83 minutes	71 minutes	82 minutes	58 minutes	54 minutes

MONDAYS TO FRIDAYS

2. Poynders Road, Kings Avenue to Kingston, Fairfield Bus Station

	Typical early morning	Longest morning peak	Typical interpeak	Longest afternoon peak	Typical evening	Typical late evening
Poynders Road Kings Avenue	0415	0802	1220	1706	2011	2300
Streatham Hill <i>Telford Avenue</i>	0417	0806	1223	1710	2013	2302
Streatham Hill <i>St. Leonards Church</i>	0423	0814	1230	1718	2020	2309
Tooting Broadway Station	0434	0830	1245	1736	2032	2321
Merton Abbey <i>Sainsbury's</i>	0439	0838	1252	1745	2038	2327
South Wimbledon Station	0441	0841	1255	1748	2040	2329
Wimbledon Station	0446	0849	1301	1756	2046	2335
Ursuline School <i>Worple Road</i>	0449	0855	1307	1802	2051	2338
Raynes Park Station <i>Raynes Park Hotel</i>	0451	0900	1310	1806	2053	2340
Coombe Lane West <i>Traps Lane</i>	0456	0908	1317	1813	2058	2345
Norbiton Church	0503	0917	1325	1823	2105	2352
Kingston Fairfield Bus Station	0505	0920	1328	1826	2107	2354
	50 minutes	78 minutes	68 minutes	80 minutes	56 minutes	54 minutes

SATURDAYS

1. Kingston, Fairfield Bus Station to Atkins Road, New Park Road

	Typical early morning	Typical late AM shopping period	Typical PM shopping period	Typical early evening	Typical late evening
Kingston Fairfield Bus Station	0415	1034	1502	2007	2307
Kingston Cromwell Road Bus Station	0419	1038	1508	2012	2312
Norbiton Church	0421	1040	1510	2014	2314
Coombe Lane West <i>Traps Lane</i>	0427	1049	1520	2020	2320
Raynes Park Station <i>Raynes Park Hotel</i>	0431	1055	1527	2025	2325
Ursuline School <i>Worple Road</i>	0433	1058	1530	2027	2327
Wimbledon Station	0437	1105	1537	2032	2332
South Wimbledon Station	0441	1112	1544	2037	2336
Merton Abbey <i>Sainsbury's</i>	0443	1115	1547	2039	2338
Tooting Broadway Station	0448	1123	1555	2045	2343
Streatham Hill <i>St. Leonards Church</i>	0459	1139	1611	2057	2354
Streatham Hill <i>Telford Avenue</i>	0504	1147	1619	2103	2359
Atkins Road New Park Road	0506	1149	1621	2105	0001
	51 minutes	75 minutes	79 minutes	58 minutes	54 minutes

SATURDAYS

2. Poynders Road, Kings Avenue to Kingston, Fairfield Bus Station

	Typical early morning	Typical late AM shopping period	Typical PM shopping period	Typical early evening	Typical late evening
Poynders Road <i>Kings Avenue</i>	0415	1033	1504	1959	2300
Streatham Hill <i>Telford Avenue</i>	0417	1036	1507	2001	2302
Streatham Hill <i>St. Leonards Church</i>	0423	1044	1515	2008	2309
Tooting Broadway Station	0434	1059	1531	2020	2321
Merton Abbey <i>Sainsbury's</i>	0439	1107	1539	2026	2327
South Wimbledon Station	0441	1110	1542	2028	2329
Wimbledon Station	0446	1117	1549	2034	2335
Ursuline School <i>Worple Road</i>	0449	1123	1555	2039	2338
Raynes Park Station <i>Raynes Park Hotel</i>	0451	1127	1559	2041	2340
Coombe Lane West <i>Traps Lane</i>	0456	1135	1607	2046	2345
Norbiton Church	0503	1145	1616	2053	2352
Kingston <i>Fairfield Bus Station</i>	0505	1148	1619	2055	2354
	50 minutes	75 minutes	75 minutes	56 minutes	54 minutes

SUNDAYS1. Kingston, Fairfield Bus Station to Atkins Road, New Park Road

	Typical early morning	Typical late AM shopping period	Typical PM shopping period	Typical early evening	Typical late evening
Kingston Fairfield Bus Station	0415	1033	1506	2007	2307
Kingston Cromwell Road Bus Station	0419	1038	1512	2011	2311
Norbiton Church	0421	1040	1514	2013	2313
Coombe Lane West <i>Traps Lane</i>	0427	1047	1522	2019	2319
Raynes Park Station <i>Raynes Park Hotel</i>	0431	1053	1528	2023	2323
Ursuline School <i>Worple Road</i>	0433	1056	1531	2025	2325
Wimbledon Station	0437	1101	1537	2029	2329
South Wimbledon Station	0441	1106	1542	2033	2333
Merton Abbey <i>Sainsbury's</i>	0443	1109	1545	2035	2335
Tooting Broadway Station	0448	1115	1551	2040	2340
Streatham Hill <i>St. Leonards Church</i>	0459	1129	1605	2051	2351
Streatham Hill <i>Telford Avenue</i>	0504	1136	1612	2056	2356
Atkins Road New Park Road	0506	1138	1614	2058	2358
	51 minutes	65 minutes	68 minutes	51 minutes	51 minutes

SUNDAYS

2. Poynders Road, Kings Avenue to Kingston, Fairfield Bus Station

	Typical early morning	Typical late AM shopping period	Typical PM shopping period	Typical early evening	Typical late evening
Poynders Road <i>Kings Avenue</i>	0415	1034	1507	2004	2304
Streatham Hill <i>Telford Ave</i>	0417	1036	1510	2006	2306
Streatham Hill <i>St. Leonards Church</i>	0423	1043	1517	2012	2312
Tooting Broadway Station	0434	1055	1531	2023	2323
Merton Abbey <i>Sainsbury's</i>	0439	1101	1537	2028	2328
South Wimbledon Station	0441	1104	1540	2030	2330
Wimbledon Station	0446	1109	1546	2035	2335
Ursuline School <i>Worple Road</i>	0449	1115	1551	2038	2338
Raynes Park Station <i>Raynes Park Hotel</i>	0451	1119	1555	2040	2340
Coombe Lane West <i>Traps Lane</i>	0456	1125	1601	2045	2345
Norbiton Church	0503	1133	1609	2052	2352
Kingston <i>Fairfield Bus Station</i>	0505	1136	1612	2054	2354
	50 minutes	62 minutes	65 minutes	50 minutes	50 minutes

The above tables have been included to assist Tenderers. They represent the information currently available to the Corporation. Tenderers should form their own views about what is appropriate in terms of running times. (See Section 8.).

APPENDIX B: SAMPLE RUNNING TIMES FOR ROUTE No. N57

(based on current schedule)

NIGHTLY1. Kingston, Fairfield Bus Station to Atkins Road, New Park Road

	Typical late night	Typical early morning
Kingston <i>Fairfield Bus Station</i>	0050	0350
<i>Kingston Cromwell Rd Bus Station</i>	0054	0353
<i>Norbiton Church</i>	0056	0355
<i>Coombe Lane West Traps Lane</i>	0102	0401
<i>Raynes Park Station Raynes Park Hotel</i>	0106	0405
<i>Ursuline School Worple Road</i>	0108	0407
<i>Wimbledon Station</i>	0111	0410
<i>South Wimbledon Station</i>	0114	0413
<i>Merton Abbey Sainsbury's</i>	0116	0415
<i>Tooting Broadway Station</i>	0120	0419
<i>Streatham Hill St. Leonards Church</i>	0129	0429
<i>Streatham Hill Telford Avenue</i>	0133	0434
Atkins Road <i>New Park Road</i>	0135	0436
	45	46
	minutes	minutes

NIGHTLY

2. Poynders Road, Kings Avenue to Kingston, Fairfield Bus Station

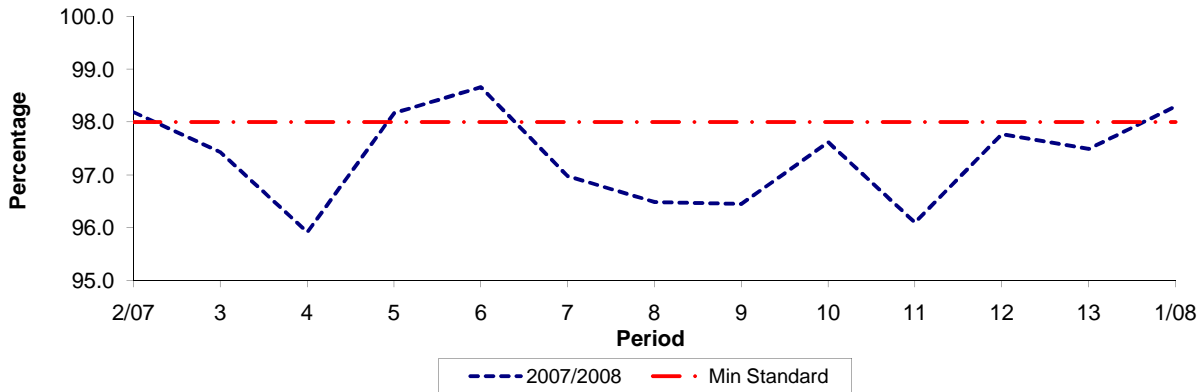
	Typical late night	Typical early morning
Poynders Road <i>Kings Avenue</i>	0100	0350
Streatham Hill <i>Telford Avenue</i>	0102	0352
Streatham Hill <i>St. Leonards Church</i>	0106	0356
Tooting Broadway Station	0115	0405
Merton Abbey <i>Sainsbury's</i>	0119	0409
South Wimbledon Station	0121	0411
Wimbledon Station	0125	0415
Ursuline School <i>Worple Road</i>	0128	0418
Raynes Park Station <i>Raynes Park Hotel</i>	0130	0420
Coombe Lane West <i>Traps Lane</i>	0134	0424
Norbiton Church	0140	0430
Kingston <i>Fairfield Bus Station</i>	0142	0432
	42	42
	minutes	minutes

The above tables have been included to assist Tenderers. They represent the information currently available to the Corporation. Tenderers should form their own views about what is appropriate in terms of running times. (See Section 8.).

PART B - PERFORMANCE STATISTICS

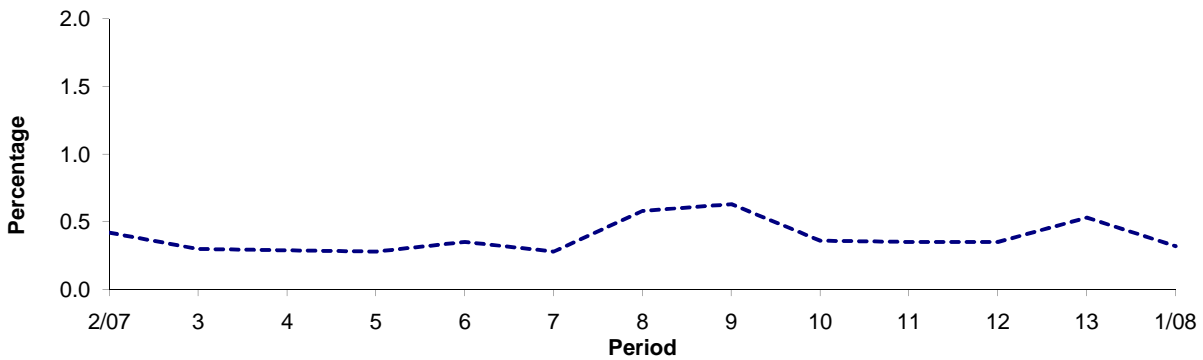
Route 57

Mileage Operated



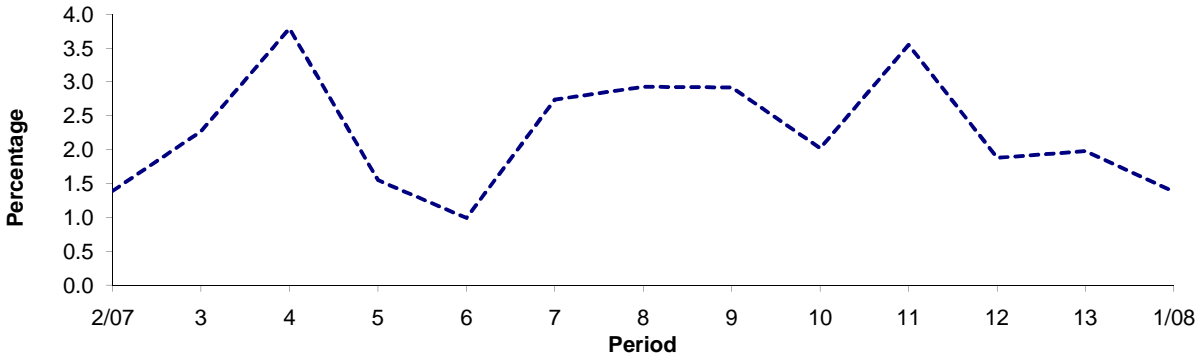
Period	2/07	3	4	5	6	7	8	9	10	11	12	13	1/08
2007/2008	98.19	97.43	95.92	98.17	98.66	96.98	96.49	96.45	97.62	96.10	97.77	97.49	98.30
Min Standard	98.00	98.00	98.00	98.00	98.00	98.00	98.00	98.00	98.00	98.00	98.00	98.00	98.00

Deductible Mileage



Period	2/07	3	4	5	6	7	8	9	10	11	12	13	1/08
2007/2008	0.42	0.30	0.29	0.28	0.35	0.28	0.58	0.63	0.36	0.35	0.35	0.53	0.32

Non Deductible Mileage



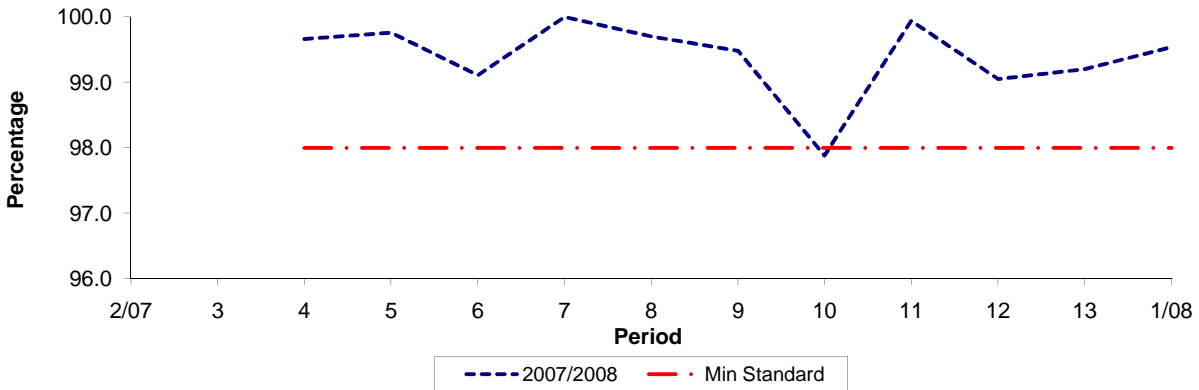
Period	2/07	3	4	5	6	7	8	9	10	11	12	13	1/08
2007/2008	1.39	2.27	3.79	1.55	0.99	2.74	2.93	2.92	2.02	3.55	1.88	1.98	1.38

Note : Mileage is based on 4 weeks data

PART B - PERFORMANCE STATISTICS

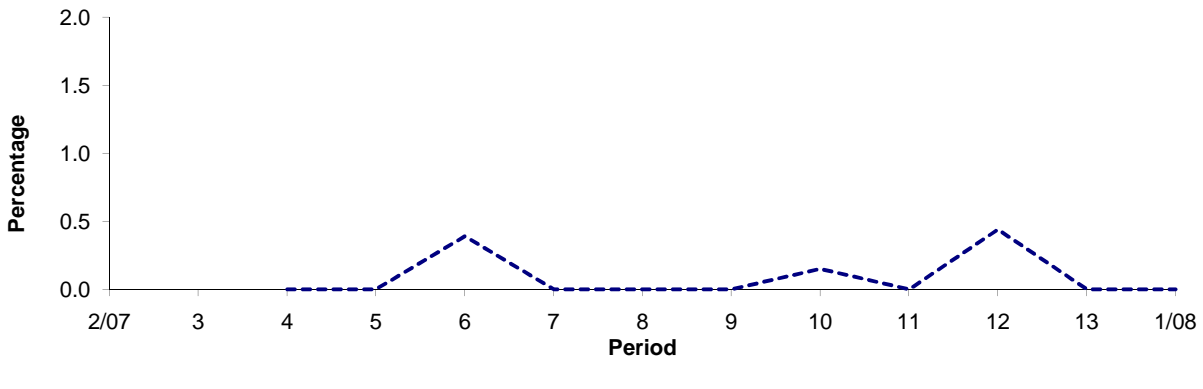
Route N57

Mileage Operated



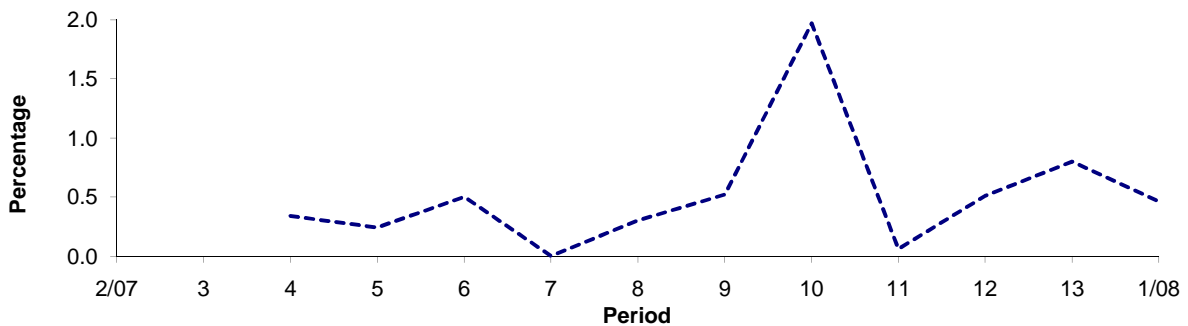
Period	2/07	3	4	5	6	7	8	9	10	11	12	13	1/08
2007/2008			99.66	99.76	99.11	100.00	99.70	99.48	97.88	99.94	99.05	99.20	99.54
Min Standard			98.00	98.00	98.00	98.00	98.00	98.00	98.00	98.00	98.00	98.00	98.00

Deductible Mileage



Period	2/07	3	4	5	6	7	8	9	10	11	12	13	1/08
2007/2008			0.00	0.00	0.39	0.00	0.00	0.00	0.15	0.00	0.44	0.00	0.00

Non Deductible Mileage

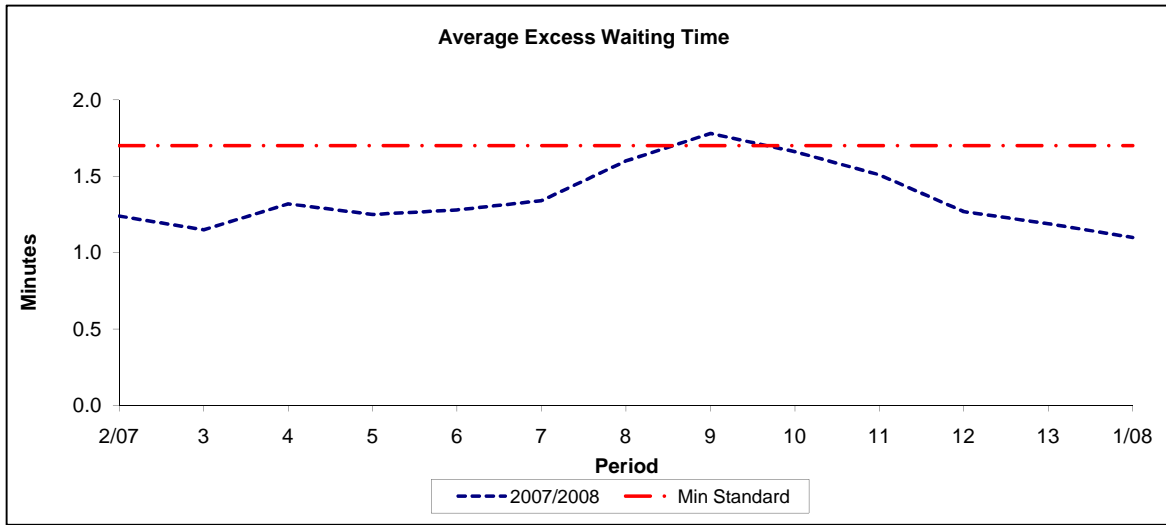


Period	2/07	3	4	5	6	7	8	9	10	11	12	13	1/08
2007/2008			0.34	0.24	0.50	0.00	0.30	0.52	1.97	0.06	0.51	0.80	0.46

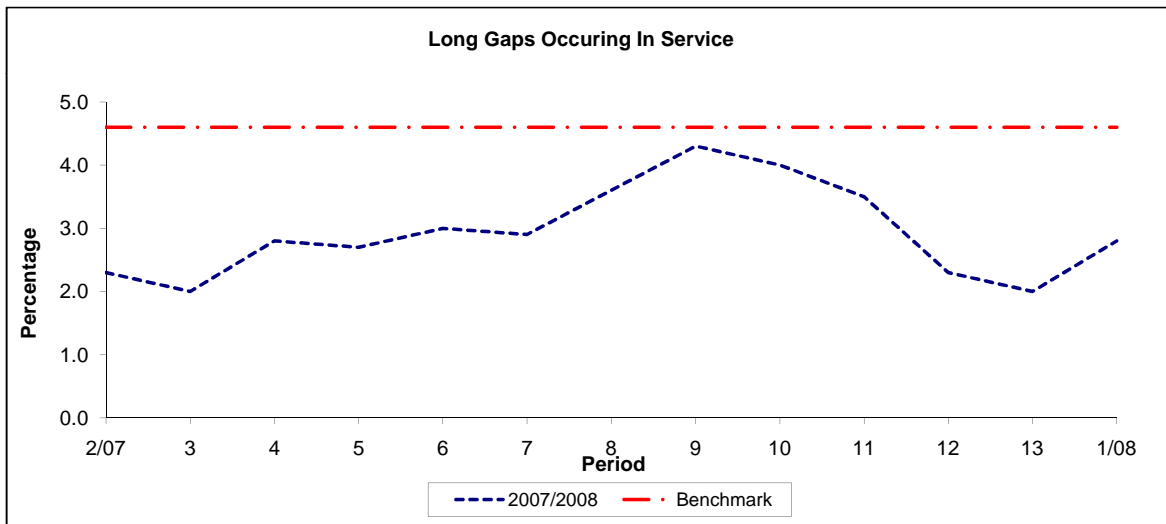
Note : Mileage is based on 4 weeks data

PART B - PERFORMANCE STATISTICS

Route 57



Period	2/07	3	4	5	6	7	8	9	10	11	12	13	1/08
2007/2008	1.24	1.15	1.32	1.25	1.28	1.34	1.60	1.78	1.66	1.51	1.27	1.19	1.10
Min Standard	1.70	1.70	1.70	1.70	1.70	1.70	1.70	1.70	1.70	1.70	1.70	1.70	1.70

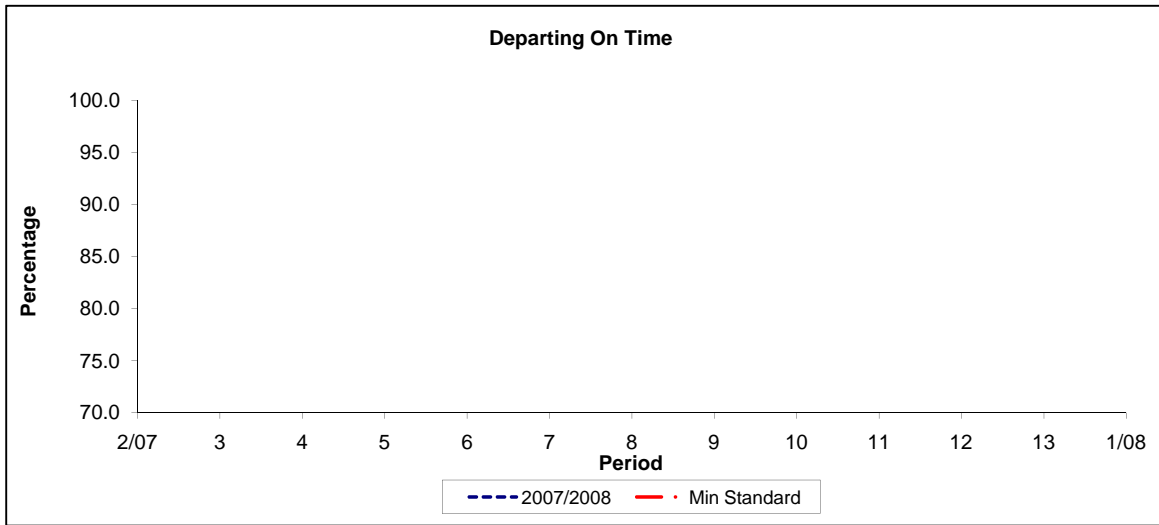


Period	2/07	3	4	5	6	7	8	9	10	11	12	13	1/08
2007/2008	2.30	2.00	2.80	2.70	3.00	2.90	3.60	4.30	4.00	3.50	2.30	2.00	2.80
Benchmark	4.60	4.60	4.60	4.60	4.60	4.60	4.60	4.60	4.60	4.60	4.60	4.60	4.60

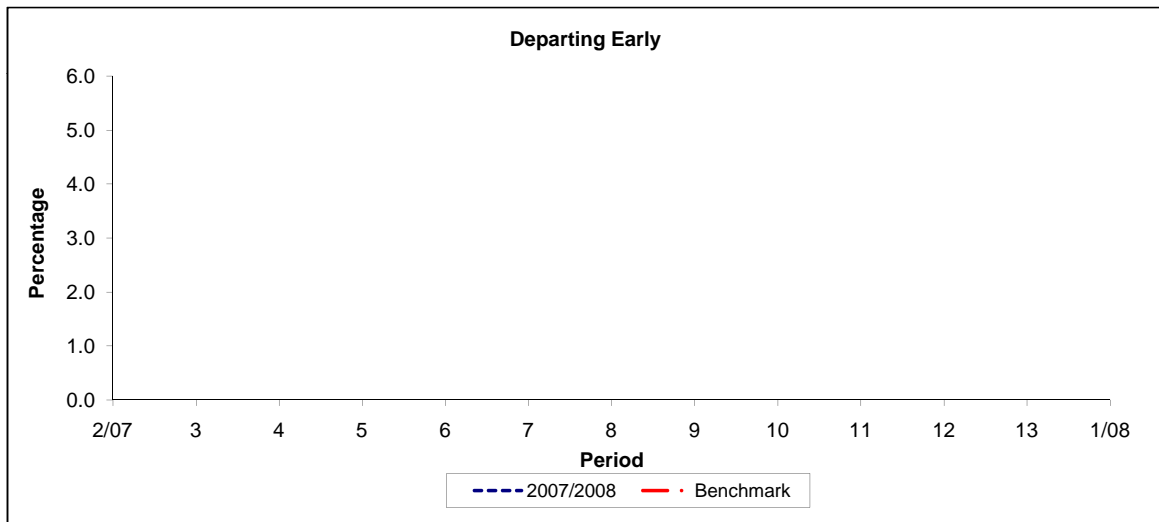
Note : Reliability is based on 12 weeks rolling data

PART B - PERFORMANCE STATISTICS

Route N57



Period	2/07	3	4	5	6	7	8	9	10	11	12	13	1/08
2007/2008													
Min Standard													



Period	2/07	3	4	5	6	7	8	9	10	11	12	13	1/08
2007/2008													
Benchmark													

Note : No reliability data - night bus route outside central London