

## 7. Service Specification

Route: 73 & N73

Contract Reference: QC61601

This Service Specification forms section 7 of the ITT and should be read in conjunction with the ITT document, Version 1 dated 29 September 2011.

You are formally invited to tender for the provision of the bus service detailed below and in accordance with this Service Specification. Tenderers must ensure that a Compliant Tender is submitted and this will only be considered for evaluation if all parts of the Tender documents, as set out in section 11, have been received by the Corporation by the Date of Tender. The Tender must be fully completed in the required format, in accordance with the Instructions to Tenderers. A Compliant Tender must comply fully with the requirements of the Framework Agreement; adhere to the requirements of the Service Specification; and reflect the price of operating the Services with new vehicles, unless otherwise specified.

<b>Route Number</b>	73 & N73
<b>Terminus Points</b>	<b>Route No. 73:</b> Oxford Circus, Holles Street and Stoke Newington Common <b>Route No. N73:</b> Oxford Circus, Holles Street and Walthamstow Central Station
<b>Contract Basis</b>	Incentivised
<b>Commencement Date</b>	1 <sup>st</sup> September 2018
<b>Vehicle Type</b>	<b>Option 1:</b> Existing New Routemaster (NRM) with one person operation (OPO) (see attached letter). <b>Option 2:</b> New 87 capacity, dual door, double deck diesel-electric vehicles.
<b>Current Maximum Approved Dimensions</b>	11.3 metres long and 2.55 metres wide
<b>New Vehicles Mandatory</b>	See Letter
<b>Hybrid Price Required</b>	Yes
<b>Sponsored Route</b>	No
<b>Advertising Rights</b>	<b>Option 1:</b> Operator (External), LBSL (Internal) <b>Option 2:</b> Operator
<b>Minimum Performance Standard - Route No. 73</b>	Average Excess Wait Time - No more than 1.20 minutes
<b>Extension Threshold - Route No. 73</b>	Average Excess Wait Time Threshold - 1.10 minutes
<b>Minimum Operated Mileage Standard - Route No. 73</b>	No less than 98%
<b>Departing On Time - Route No. N73</b>	Departing on Time - No less than 82%
<b>Minimum Operated Mileage Standard - Route No. N73</b>	No less than 99%

The Date of Tender for this ITT is: No later than 12 Noon on Monday 25th September 2017

*Tenderers should refer to section 3 of Part A for the Service Specification Explanatory Notes and Appendix B of section 5 for the Example Service Specification of the ITT document.*

## **SERVICE SPECIFICATION**

- 1) SERVICE SPEC - ROUTE SPECIFICATION INFORMATION
- 2) NOTES
- 3) SCHEDULE REQUIREMENTS & PINCHPOINTS
- 4) OPERATIONAL CONSIDERATIONS
- 5) ROUTE RECORD, CURRENT PERFORMANCE, QSI BY TIME OF DAY, IBUS MILEAGE & QSI POINTS

## 2) NOTES

### **Proposed Changes:**

At this time, no changes are proposed to the existing service for introduction prior to the commencement of the new Route Agreement for Route Nos. 73 & N73.

Tenderers should note that there are no changes proposed as part of this Service Specification for Route Nos. 73 & N73.

**The Mayor and Transport for London (TfL) have developed a proposal for an Ultra Low Emission Zone (ULEZ) in Central London.**

**The ULEZ is planned to take effect during the life of this contract and will apply 24 hours a day, 7 days a week. All double deck buses operating for TfL within the zone will be required to be hybrid (to Euro VI or better emissions standard).**

- **Any existing Euro V hybrid vehicles will need to be upgraded to reduce the NOx and PM emissions to the equivalent of Euro VI. The costs to achieve this upgrade should be included in the overall tender price. For LBSL budgeting purposes, the cost (per vehicle) to the operator of the upgrade should also be identified separately.**
- **Tenderers must identify the cost of the Nightly element of this service separately.**

**Operators should provide the following prices:**

- 1. Annual diesel-electric hybrid price - based on minimum 5 year contract.**
- 2. Annual NRM price with one person operation (OPO) at all times.**

**Tenderers are encouraged to offer alternative vehicle options in accordance with Part 9 of their tender, including but not limited to:**

- 1. New two door, single staircase vehicles inspired by the New Routemaster in respect of both their external and internal design, to the appropriate specification agreed between TfL and the manufacturers.**
- 2. Vehicles that offer genuine increased capacity on two axles and are certified as such.**
- 3. Modifications to reduce emissions and fuel consumption (including energy storage, engine stop/start, extended zero-emission range and/or energy efficient components)**
- 4. Existing vehicles.**

**Full iBus Monitoring was introduced on all night routes with effect from 1 April 2014.**

**Tenderers are therefore advised that on contracts where there is a night service both the day and night elements will be incentivised from the commencement of the Route Agreement in accordance with clause 46 of Annex B Terms and Conditions, using the Minimum Performance Standard(s) specified in Part 1 of the ITT.**

### 3) SCHEDULE REQUIREMENTS & PINCHPOINTS

#### 3.1) MONDAY TO FRIDAY SCHEDULE REQUIREMENTS & PINCHPOINTS

Oxford Circus, Holles Street to Stoke Newington Common			Stoke Newington Common to Oxford Circus, Holles Street		
First departure no later than 0535.			First departure no later than 0455.		
0530 - 0645	Every 10 minutes		0450 - 0545	Every 10 minutes	
0646 - 0710	Every 8 minutes		0546 - 0600	Every 8 minutes	
0711 - 2025	Every 5 minutes		0601 - 0715	Every 5 minutes	
2026 - 0120	Every 7-8 minutes (8 buses per hour)*		0716 - 0910	Every 4 minutes	
			0911 - 2000	Every 5 minutes	
			2001 - 0015	Every 7-8 minutes (8 buses per hour)	
Last departure no earlier than 0115.			Last departure no earlier than 0010.		
<b>Pinchpoints</b>					
Islington, Angel, High Street	0750 - 0930	5 minutes	Kings Cross Station, Grays Inn Road	0745 - 0945	4 minutes
	1455 - 1655	5 minutes		1510 - 1630	5 minutes

**\*Between 0010 and 0120 ex Oxford Circus, Holles Street N73 journeys to Walthamstow should be interworked to provide the combined 8 buses per hour headway to Stoke Newington**

#### 3.2) SATURDAY AND GOOD FRIDAY SCHEDULE REQUIREMENTS & PINCHPOINTS

Oxford Circus, Holles Street to Stoke Newington Common			Stoke Newington Common to Oxford Circus, Holles Street		
First departure no later than 0535.			First departure no later than 0505.		
0530 - 0815	Every 10 minutes		0500 - 0715	Every 10 minutes	
0816 - 0845	Every 6 minutes		0716 - 0745	Every 6 minutes	
0846 - 2020	Every 5 minutes		0746 - 1810	Every 5 minutes	
2021 - 0120	Every 7-8 minutes (8 buses per hour)*		1811 - 0015	Every 7-8 minutes (8 buses per hour)	
Last departure no earlier than 0115.			Last departure no earlier than 0010.		
<b>Pinchpoints</b>					
Islington, Angel, High Street	0905 - 1105	5 minutes	Kings Cross Station, Grays Inn Road	0910 - 1110	5 minutes

**\*Between 0010 and 0120 ex Oxford Circus, Holles Street N73 journeys to Walthamstow should be interworked to provide the combined 8 buses per hour headway to Stoke Newington**

**3) SCHEDULE REQUIREMENTS & PINCHPOINTS - continued**

**3.3) SUNDAY AND PUBLIC HOLIDAYS (EXCEPT GOOD FRIDAY AND CHRISTMAS DAY) SCHEDULE REQUIREMENTS & PINCHPOINTS**

Oxford Circus, Holles Street to Stoke Newington Common		Stoke Newington Common to Oxford Circus, Holles Street			
First departure no later than 0535.		First departure no later than 0505.			
0530 - 0710	Every 12 minutes	0500 - 0600	Every 12 minutes		
0711 - 0930	Every 10 minutes	0601 - 0750	Every 10 minutes		
0931 - 0120	Every 7-8 minutes (8 buses per hour)*	0751 - 0015	Every 7-8 minutes (8 buses per hour)		
Last departure no earlier than 0115.		Last departure no earlier than 0010.			
<b>Pinchpoints</b>					
Islington, Angel, High Street	1035 - 1135	8 minutes	Kings Cross Station, Grays Inn Road	1050 - 1150	8 minutes

**\*Between 0010 and 0120 ex Oxford Circus, Holles Street N73 journeys to Walthamstow should be interworked to provide the combined 8 buses per hour headway to Stoke Newington**

**Tenderers must identify the cost of the Boxing Day element of this service separately.**

**3.4) SUNDAY NIGHTS/MONDAY MORNINGS TO THURSDAY NIGHTS/FRIDAYS MORNINGS**

Oxford Circus, Holles Street to Walthamstow Central Station		Walthamstow Central Station to Oxford Circus, Holles Street			
First departure no later than 0015.		First departure no later than 0005.			
0010 - 0530	Every 30 minutes	2400 - 0435	Every 30 minutes		
Last departure no earlier than 0525.		Last departure no earlier than 0430.			

**3.5) FRIDAY NIGHTS/SATURDAYS MORNINGS TO SATURDAYS NIGHTS/SUNDAYS MORNINGS**

Oxford Circus, Holles Street to Walthamstow Central Station		Walthamstow Central Station to Oxford Circus, Holles Street			
First departure no later than 0015.		First departure no later than 0010.			
0010 - 0530	Every 15 minutes	0005 - 0445	Every 15 minutes		
Last departure no earlier than 0525.		Last departure no earlier than 0440.			

**Tenderers must identify the cost of the Nightly element of this service separately.**

**4) OPERATIONAL CONSIDERATIONS**

- 4.1) Route No. 73 should interwork with Route No. N73 between Oxford Circus and Stoke Newington to form a seamless 24 hour service.
- 4.2) Route No. 73 can suffer from unpredictable traffic delays throughout the route at all times, particularly during peak periods.
- 4.3) The Mayor has pledged to pedestrianise Oxford Street by 2020. All traffic including buses and taxis would be banned as part of the mayor's plans to tackle air pollution. The pedestrianisation would take place in two stages to minimise disruption with the first phase of construction on the eastern section from Oxford Circus onwards.

**5) ROUTE RECORD, CURRENT PERFORMANCE, QSI BY TIME OF DAY, IBUS MILEAGE & QSI POINTS**

- 5.1) ROUTE RECORD  
As per Busnet printout.
- 5.2) CURRENT PERFORMANCE  
As per current print out.
- 5.3) QSI BY TIME OF DAY  
As per current print out.
- 5.4) IBUS MILEAGE & QSI POINTS  
As per current print out.

# LONDON BUSES - ROUTE DESCRIPTION

## ROUTE 73: Oxford Circus, Holles Street - Stoke Newington

**Date of Structural Change:** 1 September 2018.

**Date of Service Change:** 1 September 2018.

**Reason for Issue:** New Tender.

### **STREETS TRAVERSED**

**Towards Stoke Newington:** Holles Street, Cavendish Square, Cavendish Place, Mortimer Street, Great Portland Street, Oxford Street, Tottenham Court Road, Euston Road, Euston Bus Station, Grafton Place, Churchway, Euston Road, Pentonville Road, Baron Street, White Lion Street, Islington High Street, Upper Street, Islington Green, Essex Road, Newington Green Road, Newington Green (West Side), Albion Road, Stoke Newington Church Street, Stoke Newington High Street, Northwold Road, Stoke Newington Common.

**Towards Oxford Circus, Holles Street:** Stoke Newington Common, Rectory Road, Brooke Road, Stoke Newington High Street, Stoke Newington Church Street, Albion Road, Newington Green (North Side), Newington Green (East Side), Newington Green (South Side), Newington Green Road, Essex Road, Islington Green, Upper Street, Islington High Street, Pentonville Road, King's Cross Bridge, Gray's Inn Road, Euston Road, Gower Street, Bedford Square, Bloomsbury Street, New Oxford Street, Oxford Street, Regent Street, Hanover Street, Hanover Square, Harewood Place, Holles Street.

## **AUTHORISED STANDS, CURTAILMENT POINTS, & BLIND DESCRIPTIONS**

Please note that only stands, curtailment points, & blind descriptions as detailed in this contractual document may be used.

### **OXFORD CIRCUS, HOLLES STREET, WEST SIDE**

Public stand for 6 buses on west side of Holles Street commencing 14 metres south of Cavendish Square and extending 76 metres south.

Buses proceed from Holles Street direct to stand, departing to Holles Street. Set down in Holles Street, at alighting point (BP4269 - Holles Street, Last Stop on LOR: BP4269 - Holles Street) and pick up in Holles Street, at stop OG (34846 - Holles Street, First Stop on LOR: 34846 - Holles Street).

AVAILABILITY:	At any time.
OPERATING RESTRICTIONS:	No more than 2 buses on Route 73 should be scheduled to stand at any one time.
MEAL RELIEFS:	No meal relief vehicles to stand at any time.
FERRY VEHICLES:	No ferry vehicles to park on stand at any time.
BLIND DISPLAY:	Oxford Circus.

### **TOTTENHAM COURT ROAD STN, EARNSHAW STREET (from STOKE NEWINGTON)**

Buses proceed from New Oxford Street departing to Tottenham Court Road. Set down in New Oxford Street, at stop X (35030 - Tottenham Court Road Station <>, Last Stop on LOR: 35030 - Tottenham Court Road Station <>) and pick up in Tottenham Court Road, at stop E (BP2028 - Percy Street, First Stop on LOR: BP2028 - Percy Street).

AVAILABILITY:	At any time.
OPERATING RESTRICTIONS:	<b>Turning Point Only - Buses must not stand</b>
BLIND DISPLAY:	Tottenham Court Road.

### **WARREN STREET STATION, GRAFTON WAY (from Oxford Circus, Holles Street)**

Public stand for one bus on south side of Grafton Way, commencing 1 metre east from lamp standard 3 and extending 18 metres south east.

Buses proceed from Tottenham Court Road via Hampstead Road, Euston Road, Gower Street and Grafton Way to stand, departing via Grafton Way, Tottenham Court Road, Hampstead Road and Euston Road to Gower Street. Set down in Tottenham Court Road, at Stop X (8348 - Warren Street Station <>, Last Stop on LOR: 8348 - Warren Street Station <>) and pick up in Gower Street, at Stop N (29674 - Gower Street / University College Hosp, First Stop on LOR: BP2167 - Torrington Place).

AVAILABILITY:	At any time.
OPERATING RESTRICTIONS:	Unscheduled curtailments only
MEAL RELIEFS:	No meal relief vehicles to stand at any time.
FERRY VEHICLES:	No ferry vehicles to park on stand at any time.
BLIND DISPLAY:	Warren Street.



## **WARREN STREET STATION, GRAFTON WAY (from STOKE NEWINGTON)**

Public stand for one bus on south side of Grafton Way, commencing 1 metre east from lamp standard 3 and extending 18 metres south east.

Buses proceed from Euston Road via Gower Street and Grafton Way to stand, departing via Grafton Way to Tottenham Court Road. Set down in Euston Road, at Stop P (672 - Euston Square Station <>, Last Stop on LOR: 672 - Euston Square Station <>) and pick up in Tottenham Court Road, at Stop X (8348 - Warren Street Station <>, First Stop on LOR: 8348 - Warren Street Station <>).

AVAILABILITY: At any time.  
OPERATING RESTRICTIONS: Unscheduled curtailments only  
MEAL RELIEFS: No meal relief vehicles to stand at any time.  
FERRY VEHICLES: No ferry vehicles to park on stand at any time.  
BLIND DISPLAY: Warren Street.

## **EUSTON BUS STATION**

From Oxford Circus, Holles Street.

Buses proceed from Euston Bus Station via Grafton Place and Churchway departing to Euston Road. Set down in Euston Bus Station, at Stop D (36513 - Euston Station <>#, Last Stop on LOR: 36513 - Euston Station <>#) and pick up in Euston Road, at Stop H (20917 - Euston Station <>#, First Stop on LOR: 20917 - Euston Station <>#).

From Stoke Newington.

Buses proceed from Euston Road via Euston Square departing to Euston Bus Station. Set down in Euston Bus Station, at Alighting Point (BP4522 - Euston Bus Station # <>, Last Stop on LOR: 27622 - British Library) and pick up in Euston Bus Station, at Stop D (36513 - Euston Station <>#, First Stop on LOR: 36513 - Euston Station <>#).

AVAILABILITY: At any time.  
OPERATING RESTRICTIONS: **Turning Point Only - Buses must not stand**  
BLIND DISPLAY: Euston.

## **KINGS CROSS, YORK WAY**

Public stand for 10 buses on west side of York Way commencing opposite and 31 metres south of Wharfdale Road extending 112 metres south.

### From Oxford Circus, Holles Street.

Buses proceed from Euston Road via York Way to stand, departing via York Way, Wharfdale Road, Caledonian Road and King's Cross Bridge to Gray's Inn Road. Set down in Euston Road, at Stop E (R0058 - King's Cross Station <> #, Last Stop on LOR: R0058 - King's Cross Station <> #) and pick up in Gray's Inn Road, at Stop R (183 - King's Cross Station <> #, First Stop on LOR: 14736 - St Pancras International Station #).

### From Stoke Newington.

Buses proceed from Pentonville Road via King's Cross Bridge, Gray's Inn Road and York Way to stand, departing via York Way, Goods Way and Midland Road to Euston Road. Set down in Pentonville Road, at Stop X (34940 - King's Cross / Caledonian Road, Last Stop on LOR: 34940 - King's Cross / Caledonian Road) and pick up in Euston Road, at Stop E (R0058 - King's Cross Station <> #, First Stop on LOR: R0058 - King's Cross Station <> #).

AVAILABILITY:	At any time.
OPERATING RESTRICTIONS:	Unscheduled curtailments only.
MEAL RELIEFS:	No meal relief vehicles to stand at any time.
FERRY VEHICLES:	No ferry vehicles to park on stand at any time.
BLIND DISPLAY:	King's Cross.

## **ISLINGTON ANGEL, WHITE LION STREET (from STOKE NEWINGTON)**

Stand on north side of White Lion Street.

Buses proceed from Pentonville Road via Baron Street and White Lion Street to stand, departing to White Lion Street. Set down in Pentonville Road, at Stop R (361 - Pentonville Road / Baron Street, Last Stop on LOR: 361 - Pentonville Road / Baron Street) and pick up in White Lion Street, at Stop U (9488 - White Lion Street, First Stop on LOR: 9488 - White Lion Street).

AVAILABILITY:	At any time.
OPERATING RESTRICTIONS:	Unscheduled curtailments only
MEAL RELIEFS:	No meal relief vehicles to stand at any time.
FERRY VEHICLES:	No ferry vehicles to park on stand at any time.
BLIND DISPLAY:	Islington Angel.

### **ISLINGTON GREEN, ESSEX ROAD (from Oxford Circus, Holles Street)**

Public stand north west of Essex Road commencing 50m north of junction with Upper Street.

Buses proceed from Upper Street via Islington Green to stand, departing via Islington Green, Essex Road and Cross Street to Upper Street. Set down in Upper Street, at Stop X (4716 - Angel Station ◊, Last Stop on LOR: 4716 - Angel Station ◊) and pick up in Upper Street, at Stop F (36602 - Angel Station ◊, First Stop on LOR: 36602 - Angel Station ◊).

AVAILABILITY:	At any time.
OPERATING RESTRICTIONS:	Unscheduled curtailments only
MEAL RELIEFS:	No meal relief vehicles to stand at any time.
FERRY VEHICLES:	No ferry vehicles to park on stand at any time.
BLIND DISPLAY:	Islington Green.

### **MILDMAY PARK, DOVE ROAD**

Public stand for three buses on south side of Dove Road, commencing at a point 52.4 metres east of Essex Road and extending 38.8 metres east.

#### From Oxford Circus, Holles Street.

Buses proceed from Newington Green (West Side) via Newington Green (North Side), Newington Green (East Side), Mildmay Park, Southgate Road and Dove Road to stand, departing via Dove Road to Essex Road. Set down in Newington Green (west Side), at Stop NK (1080 - Newington Green, Last Stop on LOR: 1080 - Newington Green) and pick up in Essex Road, at Stop CG (2636 - Essex Road / Marquess Road, First Stop on LOR: 2636 - Essex Road / Marquess Road).

#### From Stoke Newington.

Buses proceed from Newington Green (East Side) via Mildmay Park, Southgate Road and Dove Road to stand, departing via Dove Road and Essex Road to Newington Green Road. Set down in Newington Green (east Side), at Stop NE (2442 - Newington Green, Last Stop on LOR: 2442 - Newington Green) and pick up in Newington Green Road, at Stop CJ (4715 - Newington Green Road / Balls Pond Road, First Stop on LOR: 4715 - Newington Green Road / Balls Pond Road).

AVAILABILITY:	At any time.
OPERATING RESTRICTIONS:	Unscheduled curtailments only
MEAL RELIEFS:	No meal relief vehicles to stand at any time.
FERRY VEHICLES:	No ferry vehicles to park on stand at any time.
BLIND DISPLAY:	Mildmay Park.

## **NEWINGTON GREEN**

### From Oxford Circus, Holles Street.

Buses proceed from Newington Green (West Side) via Newington Green (North Side) departing to Newington Green (East Side). Set down in Newington Green (west Side), at Stop NK (1080 - Newington Green, Last Stop on LOR: 1080 - Newington Green) and pick up in Newington Green (east Side), at Stop NE (2442 - Newington Green, First Stop on LOR: 2442 - Newington Green).

### From Stoke Newington.

Buses proceed from Newington Green (East Side) via Newington Green (South Side) departing to Newington Green (West Side). Set down in Newington Green (east Side), at Stop NE (2442 - Newington Green, Last Stop on LOR: 2442 - Newington Green) and pick up in Newington Green (west Side), at Stop NK (1080 - Newington Green, First Stop on LOR: 1080 - Newington Green).

AVAILABILITY: At any time.  
OPERATING RESTRICTIONS: **Turning Point Only - Buses must not stand**  
BLIND DISPLAY: Newington Green.

## **STOKE NEWINGTON, CLISSOLD ROAD (from Oxford Circus, Holles Street)**

Public stand on the offside of Clissold Road, facing north, commencing opposite No. 39 and extending 46 metres south.

Buses proceed from Albion Road via Stoke Newington Church Street and Clissold Road to stand, departing via Clissold Road to Albion Road. Set down in Albion Road (1921 - Stoke Newington Town Hall, Last Stop on LOR: 1921 - Stoke Newington Town Hall) and pick up in Albion Road, at Stop NA (1922 - Clissold Crescent, First Stop on LOR: 1922 - Clissold Crescent).

AVAILABILITY: At any time.  
OPERATING RESTRICTIONS: Unscheduled curtailments only  
MEAL RELIEFS: No meal relief vehicles to stand at any time.  
FERRY VEHICLES: No ferry vehicles to park on stand at any time.  
BLIND DISPLAY: Albion Road.

## **STOKE NEWINGTON COMMON, SOUTH SIDE**

Public stand in Stoke Newington Common in 2 parts.

1 - On south side, commencing behind the 33m bus stop cage and extending 53m east.

2 - Overflow stand on north side (offside), commencing at lamp standard No 4 and extending 45 metres east.

Buses proceed from Stoke Newington Common direct to stand, departing to Stoke Newington Common. Set down in Stoke Newington Common, at Stop J (16764 - Stoke Newington Common, Last Stop on LOR: 16764 - Stoke Newington Common) and pick up in Stoke Newington Common, at Stop K (35281 - Stoke Newington Common, First Stop on LOR: 35281 - Stoke Newington Common).

AVAILABILITY:	At any time.
OPERATING RESTRICTIONS:	No more than 5 buses on Route 73 should be scheduled to stand at any one time.
MEAL RELIEFS:	No meal relief vehicles to stand at any time.
FERRY VEHICLES:	No ferry vehicles to park on stand at any time.
BLIND DISPLAY:	Stoke Newington.
OTHER INFORMATION:	Toilets available on stand 24 hours.

## LONDON BUSES - ROUTE DESCRIPTION

### **ROUTE N73: Oxford Circus, Holles Street - Walthamstow Central Bus Station**

**Date of Structural Change:** 1 September 2018.

**Date of Service Change:** 1 September 2018.

**Reason for Issue:** New Tender.

#### **STREETS TRAVERSED**

**Towards Walthamstow Central Bus Station:** Holles Street, Cavendish Square, Cavendish Place, Regent Street, Oxford Street, Tottenham Court Road, Euston Road, Euston Bus Station, Grafton Place, Churchway, Euston Road, Pentonville Road, Baron Street, White Lion Street, Islington High Street, Upper Street, Islington Green (East Side), Essex Road, Newington Green Road, Newington Green (West Side), Albion Road, Stoke Newington Church Street, Stoke Newington High Street, Stamford Hill, Tottenham High Road, Monument Way, The Hale, Ferry Lane, Tottenham Hale Bus Station Entrance, Tottenham Hale Bus Station, Tottenham Hale Bus Station Exit, Ferry Lane, Forest Road, Hoe Street, Selborne Road, Walthamstow Central Bus Station.

**Towards Oxford Circus, Holles Street:** Walthamstow Central Bus Station, Selborne Road, Hoe Street, Forest Road, Ferry Lane, Tottenham Hale Bus Station Entrance, Tottenham Hale Bus Station, Tottenham Hale Bus Station Exit, Ferry Lane, The Hale, Monument Way, Tottenham High Road, Stamford Hill, Northwold Road, Rectory Road, Brooke Road, Stoke Newington High Street, Stoke Newington Church Street, Albion Road, Newington Green (North Side), Newington Green (East Side), Newington Green (South Side), Newington Green Road, Essex Road, Islington Green (East Side), Upper Street, Islington High Street, Pentonville Road, King's Cross Bridge, Gray's Inn Road, Euston Road, Gower Street, Bedford Square, Bloomsbury Street, New Oxford Street, Oxford Street, Regent Street, Hanover Street, Hanover Square, Harewood Place, Holles Street.

## **AUTHORISED STANDS, CURTAILMENT POINTS, & BLIND DESCRIPTIONS**

Please note that only stands, curtailment points, & blind descriptions as detailed in this contractual document may be used.

### **OXFORD CIRCUS, HOLLES STREET, WEST SIDE**

Public stand for 6 buses on west side of Holles Street commencing 14 metres south of Cavendish Square and extending 76 metres south.

Buses proceed from Holles Street direct to stand, departing to Holles Street. Set down in Holles Street, at alighting point (BP4269 - Holles Street, Last Stop on LOR: BP4269 - Holles Street) and pick up in Holles Street, at stop OG (34846 - Holles Street, First Stop on LOR: 34846 - Holles Street).

AVAILABILITY: At any time.  
OPERATING RESTRICTIONS: No more than 2 buses on Route N73 should be scheduled to stand at any one time.  
MEAL RELIEFS: No meal relief vehicles to stand at any time.  
FERRY VEHICLES: No ferry vehicles to park on stand at any time.  
BLIND DISPLAY: Oxford Circus.

### **TOTTENHAM COURT ROAD STN, EARNSHAW STREET (from Walthamstow Central Bus Station)**

Buses proceed from New Oxford Street departing to Tottenham Court Road. Set down in New Oxford Street, at stop X (35030 - Tottenham Court Road Station <>, Last Stop on LOR: 35030 - Tottenham Court Road Station <>) and pick up in Tottenham Court Road, at stop E (BP2028 - Percy Street, First Stop on LOR: BP2028 - Percy Street).

AVAILABILITY: At any time.  
OPERATING RESTRICTIONS: **Turning Point Only - Buses must not stand**  
BLIND DISPLAY: Tottenham Court Road.

## **EUSTON BUS STATION, REAR STAND**

Private stand for two buses on Route 476 in rear corner of Euston Bus Station.

### From Oxford Circus, Holles Street.

Buses proceed from Euston Bus Station direct to stand, departing via Euston Bus Station, Grafton Place and Churchway to Euston Road. Set down in Euston Bus Station, at Stop D (36513 - Euston Station <#), Last Stop on LOR: 36513 - Euston Station <#) and pick up in Euston Road, at Stop H (20917 - Euston Station <#).

### From Walthamstow Central Bus Station.

Buses proceed from Euston Road via Churchway, Grafton Place and Euston Bus Station to stand, departing to Euston Bus Station. Set down in Euston Bus Station, at Alighting Point (BP4522 - Euston Bus Station # <, Last Stop on LOR: 36513 - Euston Station <#) and pick up in Euston Bus Station, at Stop D (36513 - Euston Station <#).

AVAILABILITY:	At any time.
OPERATING RESTRICTIONS:	Unscheduled curtailments only.
MEAL RELIEFS:	No meal relief vehicles to stand at any time.
FERRY VEHICLES:	No ferry vehicles to park on stand at any time.
BLIND DISPLAY:	Euston.

## **KINGS CROSS, YORK WAY**

Public stand for 10 buses on west side of York Way commencing opposite and 31 metres south of Wharfdale Road extending 112 metres south.

### From Oxford Circus, Holles Street.

Buses proceed from Euston Road via York Way to stand, departing via York Way, Wharfdale Road, Caledonian Road and King's Cross Bridge to Gray's Inn Road. Set down in Euston Road, at Stop E (R0058 - King's Cross Station < #, Last Stop on LOR: R0058 - King's Cross Station < #) and pick up in Gray's Inn Road, at Stop R (183 - King's Cross Station < #, First Stop on LOR: 14736 - St Pancras International Station #).

### From Walthamstow Central Bus Station.

Buses proceed from Pentonville Road via King's Cross Bridge, Gray's Inn Road and York Way to stand, departing via York Way, Goods Way and Midland Road to Euston Road. Set down in Pentonville Road, at Stop X (34940 - King's Cross / Caledonian Road, Last Stop on LOR: 34940 - King's Cross / Caledonian Road) and pick up in Euston Road, at Stop E (R0058 - King's Cross Station < #, First Stop on LOR: R0058 - King's Cross Station < #).

AVAILABILITY:	At any time.
OPERATING RESTRICTIONS:	Unscheduled curtailments only.
MEAL RELIEFS:	No meal relief vehicles to stand at any time.
FERRY VEHICLES:	No ferry vehicles to park on stand at any time.
BLIND DISPLAY:	King's Cross.



## **ISLINGTON, ANGEL (GOSWELL ROAD) (from Walthamstow Central Bus Station)**

Public stand on north west side of Goswell Road in two portions:

1 - for three buses, commencing opposite the part wall of no.332 and extending 30 metres north west.

2 - for two buses, commencing opposite no.356 and extending 21 metres north west. Buses proceed from Upper Street via Islington High Street, City Road, Wakley Street and Goswell Road to stand, departing via Goswell Road, City Road and Islington High Street to Upper Street. Set down in Upper Street, at Stop F (36602 - Angel Station <>, Last Stop on LOR: 36602 - Angel Station <>) and pick up in Upper Street, at Stop X (4716 - Angel Station <>, First Stop on LOR: 4716 - Angel Station <>).

AVAILABILITY:	At any time.
OPERATING RESTRICTIONS:	Unscheduled curtailments only.
MEAL RELIEFS:	No meal relief vehicles to stand at any time.
FERRY VEHICLES:	No ferry vehicles to park on stand at any time.
BLIND DISPLAY:	Islington Angel.

## **NEWINGTON GREEN, SOUTH SIDE**

Public stand for two buses on south side of Newington Green, commencing 29 metres east of the centre of Newington Green Road and extending 27 metres east.

From Oxford Circus, Holles Street.

Buses proceed from Newington Green (West Side) via Newington Green (North Side), Newington Green (East Side) and Newington Green (South Side) to stand, departing via Newington Green (South Side) to Newington Green Road. Set down in Newington Green (west Side), at Stop NK (1080 - Newington Green, Last Stop on LOR: 1080 - Newington Green) and pick up in Newington Green Road, at Stop CA (15891 - Beresford Road, First Stop on LOR: 15891 - Beresford Road).

From Walthamstow Central Bus Station.

Buses proceed from Newington Green (East Side) via Newington Green (South Side) to stand, departing via Newington Green (South Side) to Newington Green (West Side). Set down in Newington Green (east Side), at Stop NE (2442 - Newington Green, Last Stop on LOR: 2442 - Newington Green) and pick up in Newington Green (west Side), at Stop NK (1080 - Newington Green).

AVAILABILITY:	At any time.
OPERATING RESTRICTIONS:	Unscheduled curtailments only.
MEAL RELIEFS:	No meal relief vehicles to stand at any time.
FERRY VEHICLES:	No ferry vehicles to park on stand at any time.
BLIND DISPLAY:	Newington Green.

## **STOKE NEWINGTON COMMON, SOUTH SIDE**

Public stand in Stoke Newington Common in 2 parts.

1 - On south side, commencing behind the 33m bus stop cage and extending 53m east.

2 - Overflow stand on north side (offside), commencing at lamp standard No 4 and extending 45 metres east.

### From Oxford Circus, Holles Street.

Buses proceed from Stoke Newington High Street via Northwold Road and Stoke Newington Common to stand, departing via Stoke Newington Common and Rectory Road to Brooke Road. Set down in Stoke Newington High Street, at stop X (R0365 - Stoke Newington Church Street, Last Stop on LOR: R0365 - Stoke Newington Church Street) and pick up in Brooke Road, at Stop U (BP4241 - Stoke Newington High Street, First Stop on LOR: BP4241 - Stoke Newington High Street).

### From Walthamstow Central Bus Station.

Buses proceed from Northwold Road via Stoke Newington Common to stand, departing via Stoke Newington Common, Rectory Road and Brooke Road to Stoke Newington High Street. Set down in Northwold Road, at stop D (BP3194 - Northwold Road / Stoke Newington Common, Last Stop on LOR: BP3194 - Northwold Road / Stoke Newington Common) and pick up in Stoke Newington High Street, at Stop X (R0365 - Stoke Newington Church Street, First Stop on LOR: R0365 - Stoke Newington Church Street).

AVAILABILITY:	At any time.
OPERATING RESTRICTIONS:	Unscheduled curtailments only.
MEAL RELIEFS:	No meal relief vehicles to stand at any time.
FERRY VEHICLES:	No ferry vehicles to park on stand at any time.
BLIND DISPLAY:	Stoke Newington.

## **STAMFORD HILL, ROOKWOOD ROAD, EAST SIDE**

Public stand for 3 buses in two sections (16.5 and 24.5 metres) on east side of Rookwood Road outside Stamford Hill Bus Garage commencing level with lamp standard No. 3 and extending overall 77.5 metres north.

### From Oxford Circus, Holles Street.

Buses proceed from Stamford Hill via Egerton Road and Rookwood Road to stand, departing via Rookwood Road, Castlewood Road and Clapton Common to Stamford Hill. Set down in Stamford Hill, at Stop SD (14442 - Stamford Hill Broadway, Last Stop on LOR: 14442 - Stamford Hill Broadway) and pick up in Stamford Hill, at Stop SH (BP5230 - Stamford Hill Broadway, First Stop on LOR: BP5230 - Stamford Hill Broadway).

### From Walthamstow Central Bus Station.

Buses proceed from Stamford Hill via Egerton Road and Rookwood Road to stand, departing via Rookwood Road, Castlewood Road and Clapton Common to Stamford Hill. Set down in Stamford Hill, at Stop SK (25904 - Egerton Road, Last Stop on LOR: 25904 - Egerton Road) and pick up in Stamford Hill, at Stop SE (789 - Egerton Road, First Stop on LOR: 789 - Egerton Road).

AVAILABILITY:	At any time.
OPERATING RESTRICTIONS:	Unscheduled curtailments only.
MEAL RELIEFS:	No meal relief vehicles to stand at any time.
FERRY VEHICLES:	No ferry vehicles to park on stand at any time.
BLIND DISPLAY:	Stamford Hill.

## **TOTTENHAM, TOWN HALL APPROACH ROAD (from OXFORD CIRCUS, HOLLES STREET)**

Public stand for 1 bus on east side of Town Hall Approach Road commencing 26 metres north of lamp standard No. TA7A and extending 24 metres north. Buses from Edmonton can turn right into Philip Lane from the High Road

Buses proceed from Tottenham High Road via Philip Lane and Town Hall Approach Road to stand, departing via Town Hall Approach Road to Tottenham High Road. Set down in Tottenham High Road, at Stop W (70340 - Tottenham Town Hall, Last Stop on LOR: 70340 - Tottenham Town Hall) and pick up in Tottenham High Road, at Stop Q (670 - College Of North East London, First Stop on LOR: 670 - College Of North East London).

AVAILABILITY:	At any time.
OPERATING RESTRICTIONS:	Unscheduled curtailments only
MEAL RELIEFS:	No meal relief vehicles to stand at any time.
FERRY VEHICLES:	No ferry vehicles to park on stand at any time.
BLIND DISPLAY:	Tottenham, Town Hall.

## **TOTTENHAM HALE BUS STATION, EAST SIDE (from OXFORD CIRCUS, HOLLES STREET)**

Private stand for two buses for route 192 on east side of bus station adjacent to Tottenham Hale Station.

Buses proceed from Tottenham Hale Bus Station direct to stand, departing to Tottenham Hale Bus Station. Set down in Tottenham Hale Station Forecourt, at Stop AP (R0304 - Tottenham Hale Station < > #, Last Stop on LOR: 36850 - Park View Road) and pick up in Broad Lane, at Stop X (2929 - Tottenham Hale Retail Park, First Stop on LOR: BP5887 - Tottenham Hale Bus Station < > #).

AVAILABILITY: At any time.  
OPERATING RESTRICTIONS: Unscheduled curtailments only  
MEAL RELIEFS: No meal relief vehicles to stand at any time.  
FERRY VEHICLES: No ferry vehicles to park on stand at any time.  
BLIND DISPLAY: Tottenham Hale.

## **WALTHAMSTOW CENTRAL BUS STATION**

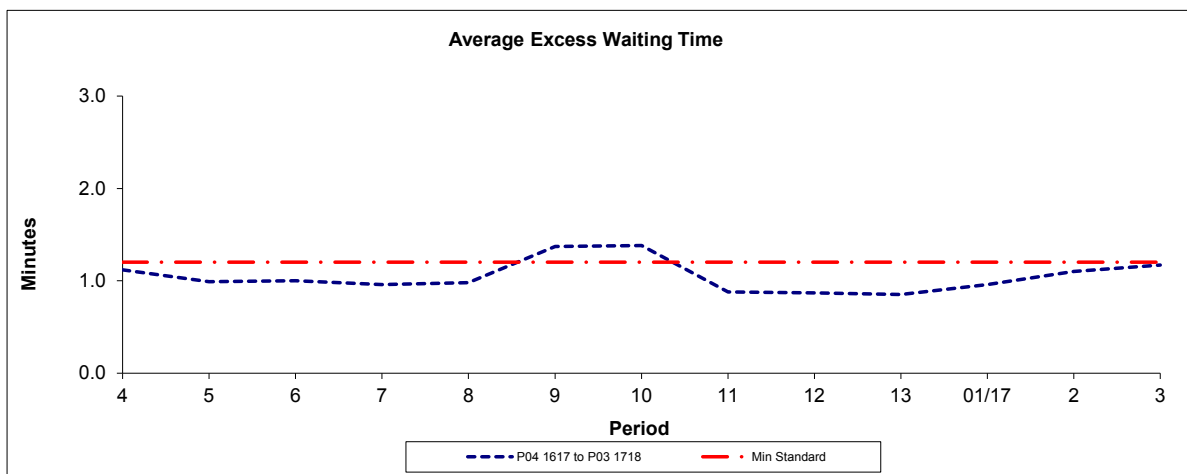
Private stand for 13 buses in marked bays on east side of Walthamstow Central Bus Station on north side of Selborne Road. Overflow offside stand for 1 bus on west side of bus station in lay-by opposite Stop A.

Buses proceed from Walthamstow Central Bus Station direct to stand, departing to Walthamstow Central Bus Station. Set down in Walthamstow Central Bus Station, at Alighting Point (BP4267 - Walthamstow Bus Station, Last Stop on LOR: BP4267 - Walthamstow Bus Station) and pick up in Walthamstow Central Bus Station, at Stop D (BP4273 - Walthamstow Bus Station, First Stop on LOR: BP4273 - Walthamstow Bus Station).

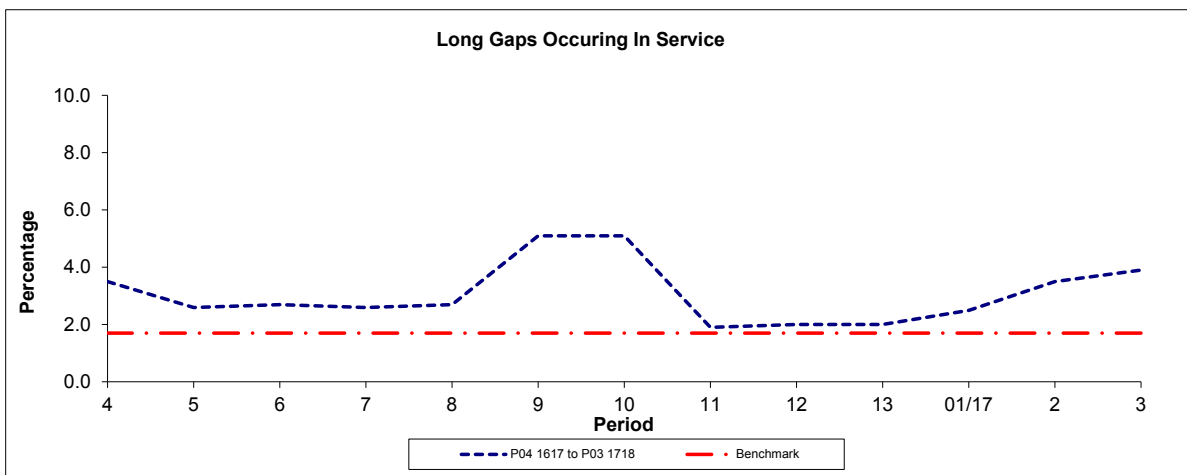
AVAILABILITY: At any time.  
OPERATING RESTRICTIONS: No more than 1 bus on Route N73 should be scheduled to stand at any one time.  
MEAL RELIEFS: No meal relief vehicles to stand at any time.  
FERRY VEHICLES: No ferry vehicles to park on stand at any time.  
BLIND DISPLAY: Walthamstow Central.  
OTHER INFORMATION: Toilet facilities available 24hours a day.

**PART B - PERFORMANCE STATISTICS**

**Route 73**



Period	4	5	6	7	8	9	10	11	12	13	01/17	2	3
P04 1617 to P03 1718	1.12	0.99	1.00	0.96	0.98	1.37	1.38	0.88	0.87	0.85	0.96	1.10	1.17
Min Standard	1.20	1.20	1.20	1.20	1.20	1.20	1.20	1.20	1.20	1.20	1.20	1.20	1.20

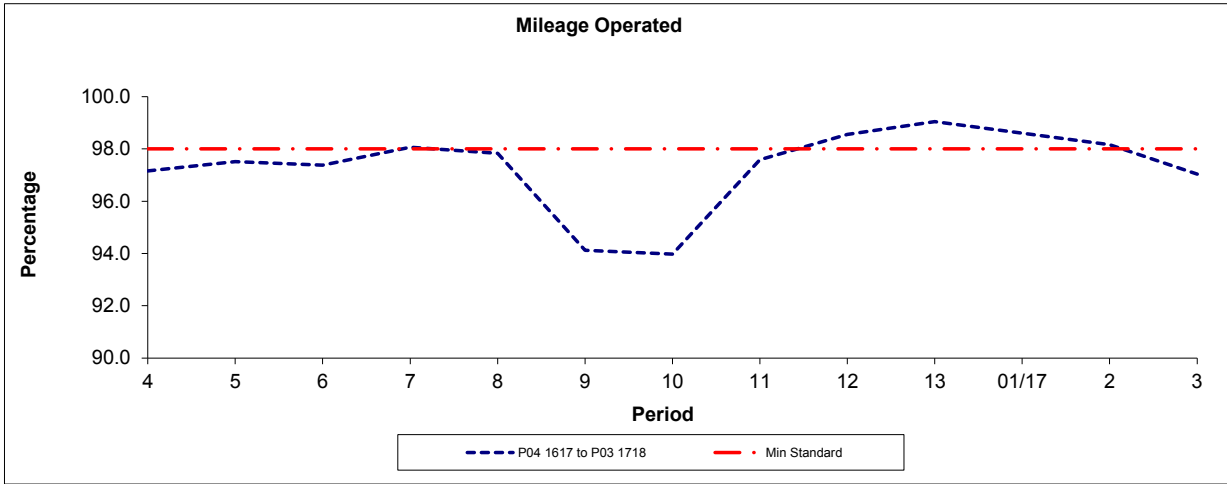


Period	4	5	6	7	8	9	10	11	12	13	01/17	2	3
P04 1617 to P03 1718	3.5	2.6	2.7	2.6	2.7	5.1	5.1	1.9	2.0	2.0	2.5	3.5	3.9
Benchmark	1.7	1.7	1.7	1.7	1.7	1.7	1.7	1.7	1.7	1.7	1.7	1.7	1.7

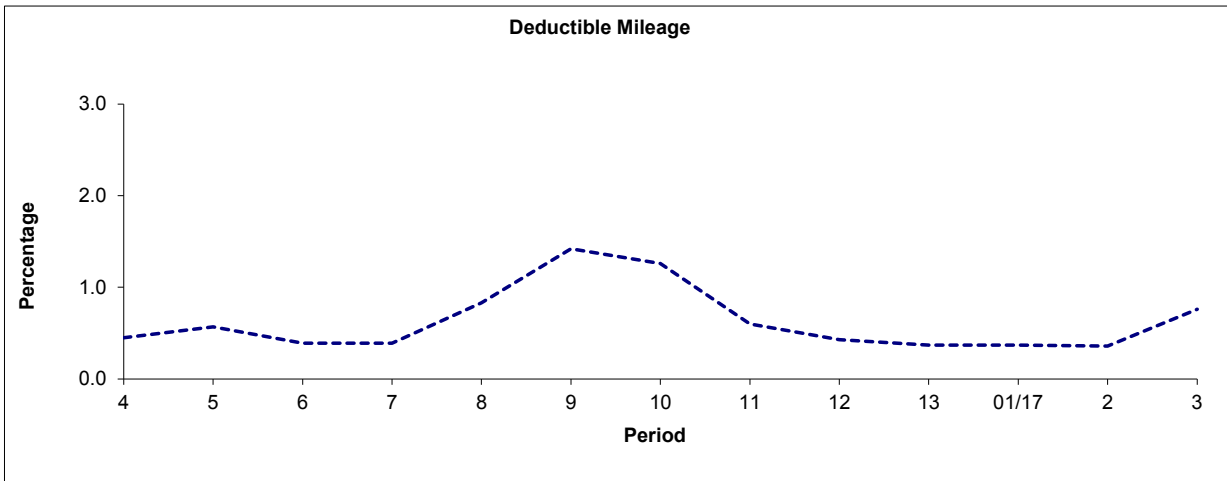
Note : Reliability is actual performance under full iBus (4 weeks data).  
Minimum Standards and Benchmarks are those applicable under the new contract.

**PART B - PERFORMANCE STATISTICS**

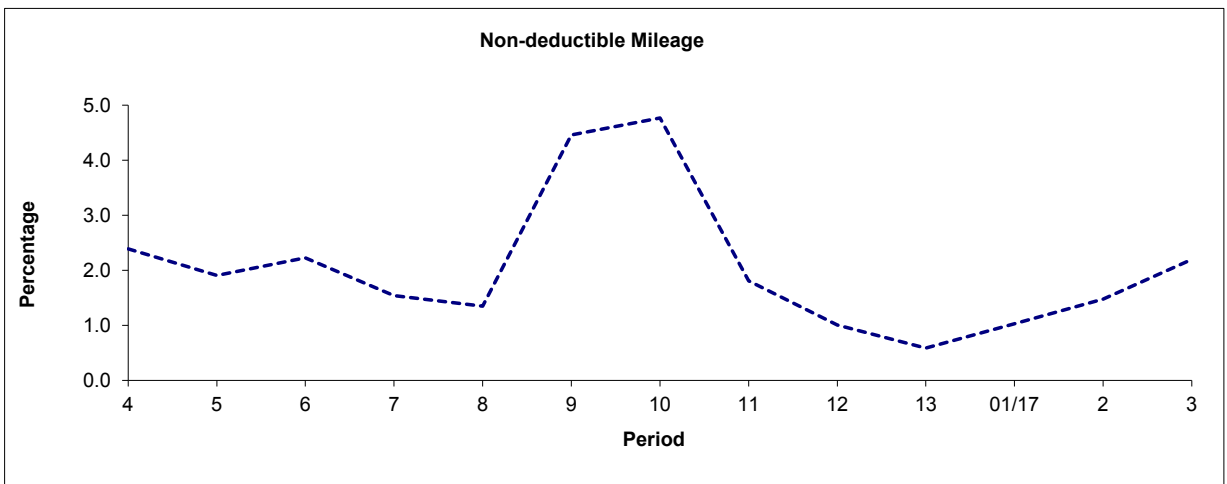
**Route 73**



Period	4	5	6	7	8	9	10	11	12	13	01/17	2	3
P04 1617 to P03 1718	97.16	97.51	97.38	98.07	97.83	94.12	93.97	97.59	98.56	99.04	98.60	98.16	97.04
Min Standard	98.00	98.00	98.00	98.00	98.00	98.00	98.00	98.00	98.00	98.00	98.00	98.00	98.00



Period	4	5	6	7	8	9	10	11	12	13	01/17	2	3
P04 1617 to P03 1718	0.45	0.57	0.39	0.39	0.83	1.42	1.26	0.60	0.43	0.37	0.37	0.36	0.76

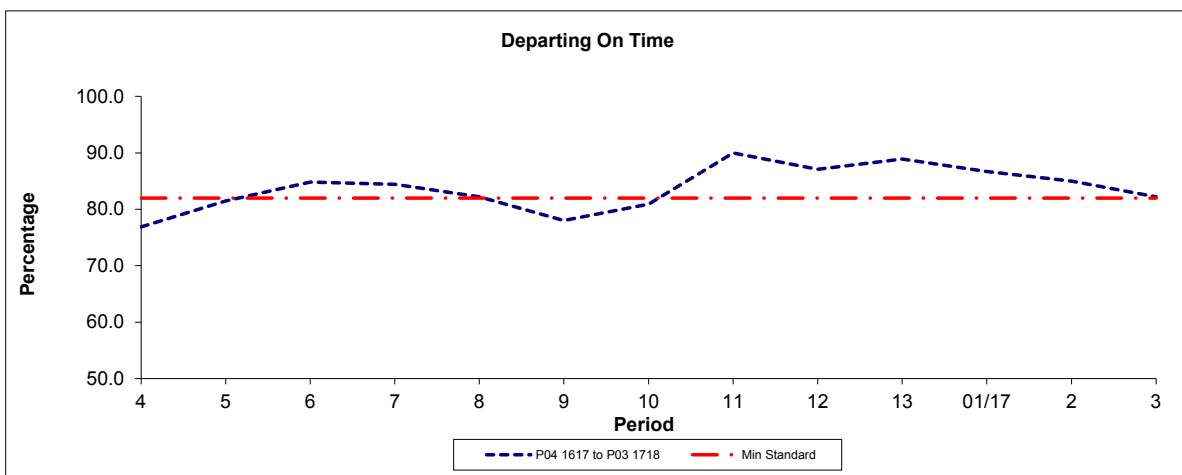


Period	4	5	6	7	8	9	10	11	12	13	01/17	2	3
P04 1617 to P03 1718	2.39	1.91	2.23	1.54	1.35	4.46	4.77	1.81	1.01	0.59	1.03	1.48	2.20

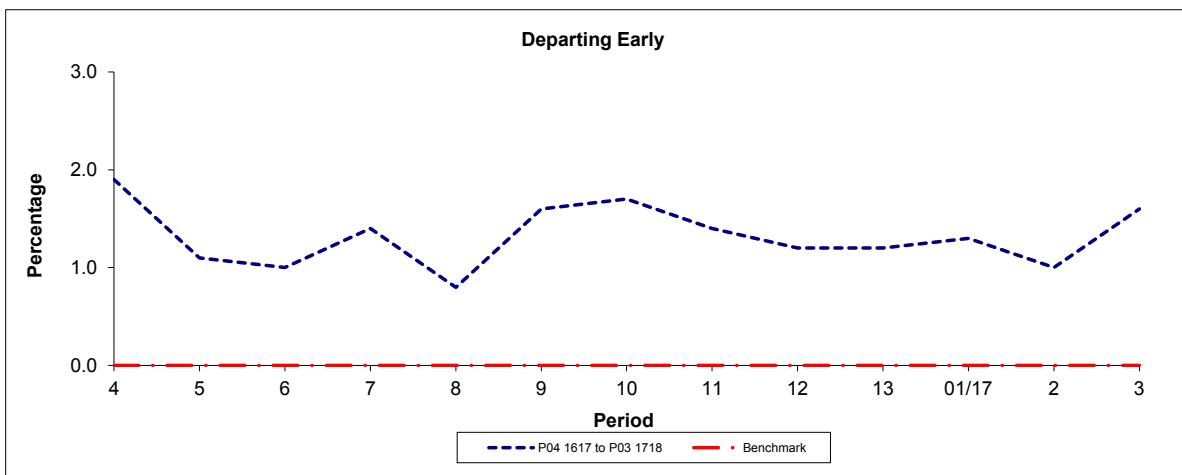
Note: Mileage is based on 4 weeks data

**PART B - PERFORMANCE STATISTICS**

**Route N73**



Period	4	5	6	7	8	9	10	11	12	13	01/17	2	3
P04 1617 to P03 1718	76.9	81.5	84.8	84.4	82.2	78.0	80.9	90.0	87.1	88.9	86.7	85.0	82.2
Min Standard	82.0	82.0	82.0	82.0	82.0	82.0	82.0	82.0	82.0	82.0	82.0	82.0	82.0

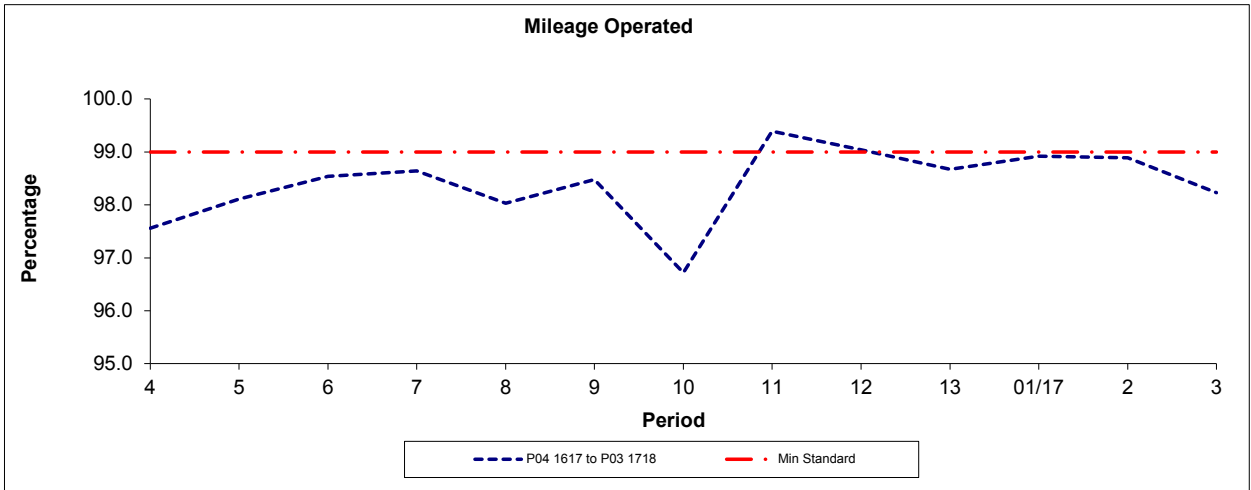


Period	4	5	6	7	8	9	10	11	12	13	01/17	2	3
P04 1617 to P03 1718	1.9	1.1	1.0	1.4	0.8	1.6	1.7	1.4	1.2	1.2	1.3	1.0	1.6
Benchmark	0.0	0.0	0.0	0.0	0.0	0.0	0.0	0.0	0.0	0.0	0.0	0.0	0.0

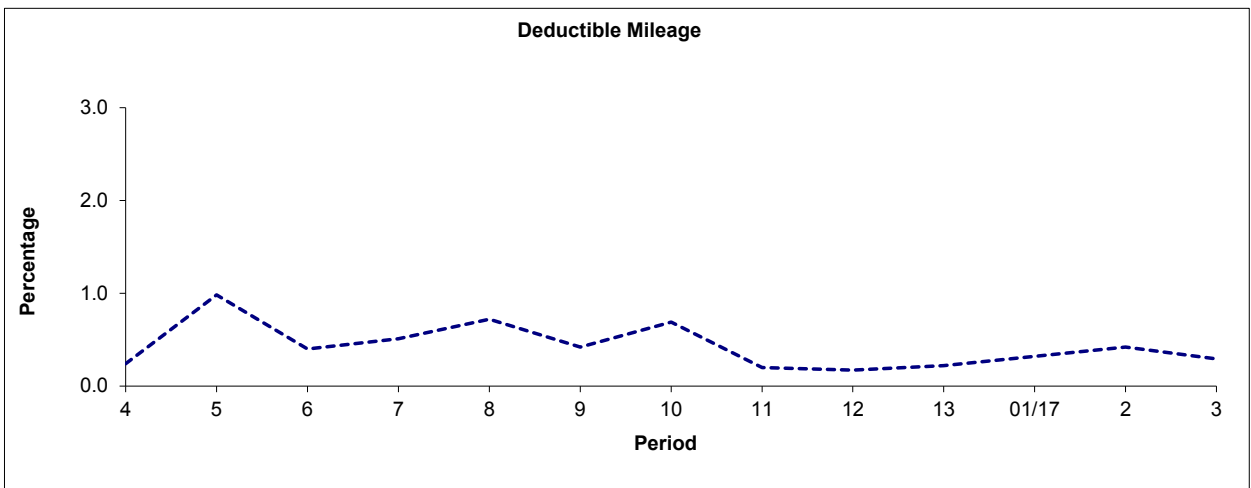
Note : Reliability is actual performance under full iBus (4 weeks data).  
Minimum Standards and Benchmarks are those applicable under the new contract.

**PART B - PERFORMANCE STATISTICS**

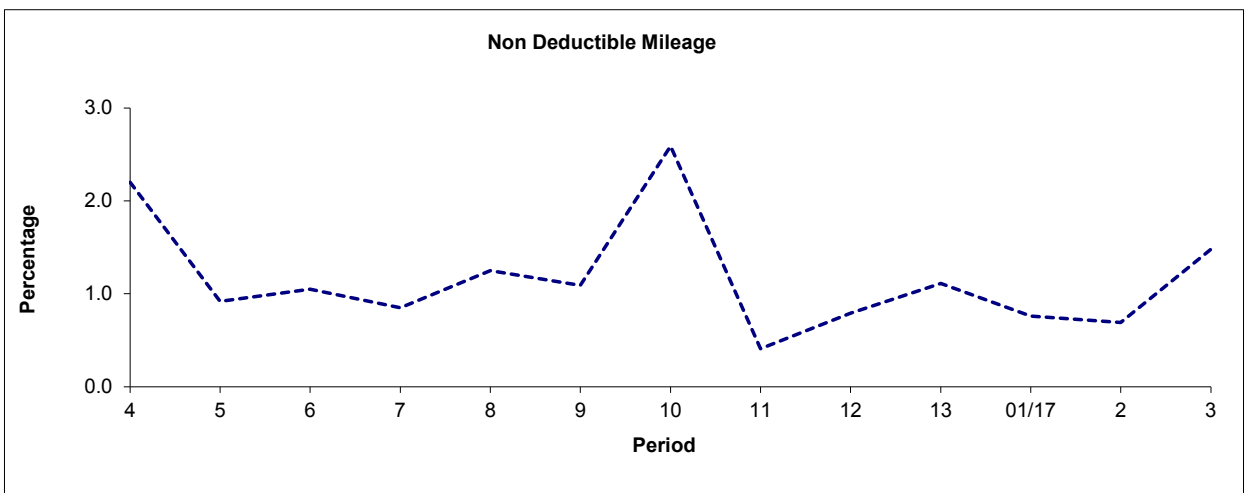
**Route N73**



Period	4	5	6	7	8	9	10	11	12	13	01/17	2	3
P04 1617 to P03 1718	97.56	98.11	98.54	98.64	98.03	98.48	96.72	99.39	99.04	98.67	98.92	98.89	98.23
Min Standard	99.00	99.00	99.00	99.00	99.00	99.00	99.00	99.00	99.00	99.00	99.00	99.00	99.00



Period	4	5	6	7	8	9	10	11	12	13	01/17	2	3
P04 1617 to P03 1718	0.24	0.98	0.40	0.51	0.72	0.42	0.69	0.20	0.17	0.22	0.32	0.42	0.29



Period	4	5	6	7	8	9	10	11	12	13	01/17	2	3
P04 1617 to P03 1718	2.20	0.92	1.05	0.85	1.25	1.09	2.59	0.41	0.79	1.11	0.76	0.69	1.48

Note: Mileage is based on 4 weeks data



**ROUTE 73 - FULL IBUS RESULTS BY TIME OF DAY**  
**QUARTER 2 16/17 TO QUARTER 1 17/18 (25/06/16 - 23/06/17)**

**MONDAY - FRIDAY**

Time Range	Expected Buses	Observed Buses	Observed Buses (%)	SWT (mins)	EWT (mins)	AWT (mins)	Probability of Waiting < 10 mins (%)	Probability of Waiting 10-20 mins (%)	Probability of Waiting 20-30 mins (%)	Probability of Waiting > 30 mins (%)	Long Gaps (%)	Maximum Gap (mins)
05:00 - 07:00	56,864	55,401	97.4	4.56	<b>0.72</b>	5.28	88.5	10.8	0.6	0.1	0.6	53
07:00 - 10:00	219,610	214,926	97.9	1.87	<b>0.86</b>	2.74	98.4	1.6	0.0	0.0	1.3	60
10:00 - 13:00	169,906	165,130	97.2	2.34	<b>1.10</b>	3.44	95.8	3.9	0.2	0.0	4.2	55
13:00 - 16:00	167,241	162,685	97.3	2.34	<b>1.18</b>	3.52	95.7	4.1	0.2	0.1	4.3	56
16:00 - 19:00	187,745	183,222	97.6	2.10	<b>1.11</b>	3.21	96.9	2.9	0.1	0.0	3.1	52
19:00 - 22:00	169,983	164,427	96.7	2.32	<b>1.09</b>	3.41	96.3	3.6	0.1	0.0	3.1	45
22:00 - 24:00	81,035	82,167	101.4	3.24	<b>0.99</b>	4.22	92.9	6.7	0.3	0.1	2.8	52
<b>All Locations Summary</b>	<b>1,052,384</b>	<b>1,027,958</b>	<b>97.7</b>	<b>2.31</b>	<b>1.05</b>	<b>3.35</b>	<b>96.2</b>	<b>3.6</b>	<b>0.2</b>	<b>0.0</b>	<b>3.0</b>	<b>60</b>

**SATURDAY**

Time Range	Expected Buses	Observed Buses	Observed Buses (%)	SWT (mins)	EWT (mins)	AWT (mins)	Probability of Waiting < 10 mins (%)	Probability of Waiting 10-20 mins (%)	Probability of Waiting 20-30 mins (%)	Probability of Waiting > 30 mins (%)	Long Gaps (%)	Maximum Gap (mins)
05:00 - 07:00	4,998	4,955	99.1	6.12	<b>0.59</b>	6.71	84.1	14.1	1.3	0.5	1.6	53
07:00 - 10:00	28,353	27,678	97.6	2.95	<b>0.91</b>	3.86	95.6	4.3	0.1	0.0	1.6	31
10:00 - 13:00	30,021	29,573	98.5	2.57	<b>0.99</b>	3.56	96.2	3.6	0.1	0.0	3.3	28
13:00 - 16:00	27,915	27,277	97.7	2.66	<b>1.22</b>	3.88	94.2	5.3	0.4	0.1	4.7	91
16:00 - 19:00	30,889	29,454	95.4	2.60	<b>1.22</b>	3.82	94.7	5.1	0.3	0.0	4.7	35
19:00 - 22:00	28,662	27,952	97.5	2.80	<b>1.27</b>	4.07	93.4	6.3	0.3	0.0	4.5	61
22:00 - 24:00	16,237	16,068	99.0	3.33	<b>1.23</b>	4.56	90.0	9.2	0.7	0.2	4.2	42
<b>All Locations Summary</b>	<b>167,075</b>	<b>162,957</b>	<b>97.5</b>	<b>2.81</b>	<b>1.13</b>	<b>3.94</b>	<b>94.3</b>	<b>5.4</b>	<b>0.3</b>	<b>0.1</b>	<b>3.9</b>	<b>91</b>

**SUNDAY AND BANK HOLIDAYS**

Time Range	Expected Buses	Observed Buses	Observed Buses (%)	SWT (mins)	EWT (mins)	AWT (mins)	Probability of Waiting < 10 mins (%)	Probability of Waiting 10-20 mins (%)	Probability of Waiting 20-30 mins (%)	Probability of Waiting > 30 mins (%)	Long Gaps (%)	Maximum Gap (mins)
05:00 - 07:00	4,688	4,642	99.0	6.94	<b>0.32</b>	7.25	83.5	14.0	2.4	0.1	1.3	49
07:00 - 10:00	21,381	20,872	97.6	4.13	<b>0.68</b>	4.81	91.9	7.8	0.1	0.2	0.8	30
10:00 - 13:00	28,881	28,510	98.7	3.01	<b>0.85</b>	3.86	95.8	4.1	0.1	0.0	1.9	30
13:00 - 16:00	28,414	28,106	98.9	3.05	<b>1.02</b>	4.08	94.2	5.5	0.3	0.0	2.7	48
16:00 - 19:00	29,697	28,698	96.6	2.97	<b>1.12</b>	4.09	94.0	5.8	0.2	0.0	3.2	39
19:00 - 22:00	28,876	29,064	100.7	2.97	<b>0.96</b>	3.93	95.2	4.6	0.1	0.1	2.3	34
22:00 - 24:00	17,353	17,368	100.1	3.22	<b>0.79</b>	4.01	94.7	5.3	0.1	0.0	1.6	54
<b>All Locations Summary</b>	<b>159,290</b>	<b>157,260</b>	<b>98.7</b>	<b>3.23</b>	<b>0.93</b>	<b>4.17</b>	<b>94.1</b>	<b>5.6</b>	<b>0.2</b>	<b>0.0</b>	<b>2.3</b>	<b>54</b>

**ALL DAYS**

Time Range	Expected Buses	Observed Buses	Observed Buses (%)	SWT (mins)	EWT (mins)	AWT (mins)	Probability of Waiting < 10 mins (%)	Probability of Waiting 10-20 mins (%)	Probability of Waiting 20-30 mins (%)	Probability of Waiting > 30 mins (%)	Long Gaps (%)	Maximum Gap (mins)
05:00 - 07:00	66,550	64,998	97.7	4.87	<b>0.68</b>	5.55	87.8	11.3	0.8	0.1	0.8	53
07:00 - 10:00	269,344	263,476	97.8	2.07	<b>0.86</b>	2.93	97.8	2.1	0.0	0.0	1.3	60
10:00 - 13:00	228,808	223,213	97.6	2.46	<b>1.05</b>	3.51	95.9	3.9	0.2	0.0	3.8	55
13:00 - 16:00	223,570	218,068	97.5	2.47	<b>1.17</b>	3.64	95.3	4.4	0.2	0.0	4.2	91
16:00 - 19:00	248,331	241,374	97.2	2.24	<b>1.12</b>	3.37	96.4	3.5	0.2	0.0	3.3	52
19:00 - 22:00	227,521	221,443	97.3	2.46	<b>1.10</b>	3.56	95.7	4.1	0.2	0.0	3.3	61
22:00 - 24:00	114,625	115,603	100.9	3.25	<b>1.01</b>	4.26	92.6	6.9	0.3	0.1	2.9	54
<b>All Locations Summary</b>	<b>1,378,749</b>	<b>1,348,175</b>	<b>97.8</b>	<b>2.46</b>	<b>1.05</b>	<b>3.51</b>	<b>95.8</b>	<b>4.0</b>	<b>0.2</b>	<b>0.0</b>	<b>3.1</b>	<b>91</b>

**ROUTE N73 - FULL iBUS RESULTS BY TIME OF DAY**  
**QUARTER 2 16/17 TO QUARTER 1 17/18 (25/06/16 - 23/06/17)**

**MONDAY - FRIDAY**

Time Range	Expected Buses	Observed Buses	Observed Buses (%)	Linked Buses (%)	On Time (%)	Non Arrival / Not Linked (%)	Early (%)	Late (%)
00:00 - 05:00	58,914	57,815	98.1	98.2	87.8	2.0	1.1	9.0
<b>All Locations Summary</b>	<b>58,914</b>	<b>57,815</b>	<b>98.1</b>	<b>98.2</b>	<b>87.8</b>	<b>2.0</b>	<b>1.1</b>	<b>9.0</b>

**SATURDAY**

Time Range	Expected Buses	Observed Buses	Observed Buses (%)	Linked Buses (%)	On Time (%)	Non Arrival / Not Linked (%)	Early (%)	Late (%)
00:00 - 05:00	26,613	26,092	98.0	95.8	81.2	5.4	1.4	12.0
<b>All Locations Summary</b>	<b>26,613</b>	<b>26,092</b>	<b>98.0</b>	<b>95.8</b>	<b>81.2</b>	<b>5.4</b>	<b>1.4</b>	<b>12.0</b>

**SUNDAYS & BANK HOLIDAYS**

Time Range	Expected Buses	Observed Buses	Observed Buses (%)	Linked Buses (%)	On Time (%)	Non Arrival / Not Linked (%)	Early (%)	Late (%)
00:00 - 05:00	26,802	26,304	98.1	94.7	76.0	6.3	1.7	16.1
<b>All Locations Summary</b>	<b>26,802</b>	<b>26,304</b>	<b>98.1</b>	<b>94.7</b>	<b>76.0</b>	<b>6.3</b>	<b>1.7</b>	<b>16.1</b>

**ALL DAYS**

Time Range	Expected Buses	Observed Buses	Observed Buses (%)	Linked Buses (%)	On Time (%)	Non Arrival / Not Linked (%)	Early (%)	Late (%)
00:00 - 05:00	112,329	110,211	98.1	96.8	83.6	3.8	1.3	11.3
<b>All Locations Summary</b>	<b>112,329</b>	<b>110,211</b>	<b>98.1</b>	<b>96.8</b>	<b>83.6</b>	<b>3.8</b>	<b>1.3</b>	<b>11.3</b>

Transport for London - Live Mileage List

v2.0 - Mileage directly imported from Caesar

**TRANCHE 616**

Route: 73

Service change: 44368

Date: 17/06/2017

QSI Points are highlighted

Reason for Issue

Restructured to operate between Oxford Circus and Stoke Newington

OUT DIRECTION				
Timing Point Code	Stop Number	Stop Name	Metres	Miles
OXFCHS	34846	Holles Street		
	15783	Great Titchfield St / Oxford Circus Stn	856	0.53
TCTROS	37317	Tottenham Court Road Station	561	0.35
	BP2028	Percy Street	405	0.25
	660	Goodge Street Station	288	0.18
	8348	Warren Street Station	375	0.23
	673	Euston Square Station	221	0.14
EUSTSN	36513	Euston Station	474	0.29
	8330	British Library	472	0.29
KGXSER	R0058	King's Cross Station	333	0.21
	185	King's Cross Road	311	0.19
	8363	Penton Rise	204	0.13
	1073	Penton Street	273	0.17
	9487	Baron Street / Chapel Market	232	0.14
	9488	White Lion Street	201	0.12
ISLNHS	4716	Angel Station	212	0.13
	9996	Theberton Street	376	0.23
	29792	St Mary's Church	249	0.15
	26500	Islington Town Hall	318	0.20
	10002	Highbury Corner	341	0.21
	14608	Canonbury Road / Highbury Corner	410	0.25
	14606	Canonbury Grove	245	0.15
ESXRSN	14602	Essex Road Station	248	0.15
	2633	Northchurch Road	390	0.24
ESXRDR	2637	Ockendon Road	308	0.19
	4715	Newington Green Road / Balls Pond Road	332	0.21
	15892	Beresford Road	330	0.21
NEWNGN	1080	Newington Green	247	0.15
	1923	Clissold Crescent	562	0.35
	BP1562	Barbauld Road	237	0.15
	1921	Stoke Newington Town Hall	265	0.16
	R0731	Bouverie Road	510	0.32
	BP4880	William Patten School	193	0.12
SNEWHC	BP5254	Stoke Newington High St / Garnham Street	107	0.07
	BP3194	Northwold Road / Stoke Newington Common	226	0.14
SNEWCM	16764	Stoke Newington Common	353	0.22
Total Route Mileage - Out Direction			11665	7.25
			Metres	Miles

BACK DIRECTION				
Timing Point Code	Stop Number	Stop Name	Metres	Miles
SNEWCM	35281	Stoke Newington Common		
	BP4241	Stoke Newington High Street	290	0.18
	1919	William Patten School	265	0.16
	15890	Bouverie Road	209	0.13
	1920	Stoke Newington Town Hall	368	0.23
	25132	Barbauld Road	304	0.19
	1922	Clissold Crescent	334	0.21
	1082	Green Lanes	433	0.27
NEWNGN	2442	Newington Green	141	0.09
	15891	Beresford Road	291	0.18
	907	Balls Pond Road	327	0.20
	2636	Essex Road / Marquess Road	195	0.12
ESXRDR	2632	Northchurch Road	303	0.19
ESXRSN	14920	Essex Road Station	409	0.25
	793	Cross Street	441	0.27
	2626	Packington Street	197	0.12
	791	Islington Green	188	0.12
ISLNHS	36602	Angel Station	307	0.19
	361	Pentonville Road / Baron Street	304	0.19
	1074	Penton Street / Chapel Market	188	0.12
	BP134	Penton Rise	332	0.21
	34940	King's Cross / Caledonian Road	377	0.23
KGXSGI	183	King's Cross Station	123	0.08
	14736	St Pancras International Station	285	0.18
	27622	British Library	263	0.16
EUSTER	20917	Euston Station	361	0.22
	672	Euston Square Station	167	0.10
	29674	Gower Street / University College Hosp	265	0.16
	BP2167	Torrington Place	160	0.10
	29676	Chenies Street	229	0.14
	29735	Great Russell Street	379	0.24
	35030	Tottenham Court Road Station	271	0.17
TCTROS	165	Oxford Street / Soho Street	298	0.19
	33924	Great Titchfield St / Oxford Circus Stn	580	0.36
OXFCHS	BP4269	Holles Street	641	0.40
Total Route Mileage - Back Direction			10225	6.35
			Metres	Miles

Transport for London - Live Mileage List

v2.0 - Mileage directly imported from Caesar

**TRANCHE 616**

Route: N73

Service change: 44382

Date: 17/06/2017

Reason for Issue

Restructured to operate between Oxford Circus and Walthamstow Central bus station.

QSI Points are highlighted

OUT DIRECTION				
Timing Point Code	Stop Number	Stop Name	Metres	Miles
OXFCHS	34846	Holles Street		
	15783	Great Titchfield St / Oxford Circus Stn	856	0.53
TCTROS	37317	Tottenham Court Road Station	561	0.35
	BP2028	Percy Street	405	0.25
	660	Goodge Street Station	288	0.18
	8348	Warren Street Station	375	0.23
	673	Euston Square Station	221	0.14
EUSTSN	36513	Euston Station	474	0.29
	8330	British Library	472	0.29
KGXSER	R0058	King's Cross Station	333	0.21
	185	King's Cross Road	311	0.19
	8363	Penton Rise	204	0.13
	1073	Penton Street	273	0.17
	9487	Baron Street / Chapel Market	232	0.14
	9488	White Lion Street	201	0.12
ISLNHS	4716	Angel Station	212	0.13
	9996	Theberton Street	376	0.23
	29792	St Mary's Church	249	0.15
	26500	Islington Town Hall	318	0.20
	10002	Highbury Corner	341	0.21
	14608	Canonbury Road / Highbury Corner	410	0.25
	14606	Canonbury Grove	245	0.15
ESXRSN	14602	Essex Road Station	248	0.15
	2633	Northchurch Road	390	0.24
	2637	Ockendon Road	308	0.19
	4715	Newington Green Road / Balls Pond Road	332	0.21
	15892	Beresford Road	330	0.21
NEWNGN	1080	Newington Green	247	0.15
	1923	Clissold Crescent	562	0.35
	BP1562	Barbauld Road	237	0.15
	1921	Stoke Newington Town Hall	265	0.16
	R0731	Bouverie Road	510	0.32
	BP4880	William Patten School	193	0.12
SNEWHC	R0365	Stoke Newington Church Street	149	0.09
	26234	Stoke Newington Station	216	0.13
	1544	Lynmouth Road	365	0.23
	26360	Stamford Hill Library	243	0.15
STAMBY	14442	Stamford Hill Broadway	330	0.21
	789	Egerton Road	152	0.09
	2080	St Ann's Road	259	0.16
	BP3383	Lealand Road	212	0.13
	2076	South Tottenham Station	256	0.16
	958	Seven Sisters Road	179	0.11
SSISSN	BP2074	Seven Sisters Station	154	0.10
	671	College Of North East London	108	0.07
TOTTSW	70340	Tottenham Town Hall	317	0.20
	34287	Tottenham High Road	252	0.16
	36850	Park View Road	258	0.16
TTHLBS	BP5885	Tottenham Hale Bus Station	583	0.36
	6617	Mill Mead Road	209	0.13
	6618	Ferry Boat Inn	344	0.21
BHRDSN	6622	Blackhorse Road Stn / Blackhorse Ln	872	0.54
	6625	King Edward Road	469	0.29
	6627	Higham Hill Road	290	0.18
	6630	Wolsey Avenue	370	0.23
	6631	Lloyd Park / William Morris Gallery	365	0.23
	6633	Bromley Road	177	0.11
	7949	Jewel Road	385	0.24
	33832	Walthamstow Market	382	0.24
	R0036	Walthamstow Central Station	438	0.27
WSTCSN	BP4267	Walthamstow Bus Station	101	0.06

Total Route Mileage - Out Direction 19414 12.06  
Metres Miles

BACK DIRECTION				
Timing Point Code	Stop Number	Stop Name	Metres	Miles
WSTCSN	BP4273	Walthamstow Bus Station		
	7952	Walthamstow Market	521	0.32
	7950	Jewel Road	343	0.21
	25449	Forest Road / Bell Corner	225	0.14
	6676	Bromley Road	159	0.10
	11487	Lloyd Park / William Morris Gallery	286	0.18
	6673	Wolsey Avenue	333	0.21
	6671	Higham Hill Road	178	0.11
	R0030	Century Road	329	0.20
	37074	Pretria Avenue	254	0.16
BHRDSN	6666	Blackhorse Road Stn / Blackhorse Ln	301	0.19
	6665	Ferry Lane Industrial Estate	204	0.13
	6662	Ferry Boat Inn	519	0.32
	BP1062	Bream Close	213	0.13
	6661	Mill Mead Road	308	0.19
TTHLBS	BP5887	Tottenham Hale Bus Station	335	0.21
	BP5758	Park View Road	497	0.31
	10944	Tottenham Town Hall	405	0.25
	670	College Of North East London	256	0.16
TOTTHS	959	Seven Sisters Station	284	0.18
	2075	South Tottenham Station	291	0.18
	9647	St Ann's Road	321	0.20
	25904	Egerton Road	366	0.23
STAMBY	BP5230	Stamford Hill Broadway	219	0.14
	26361	Stamford Hill Library	290	0.18
	1545	Lynmouth Road	272	0.17
	1116	Stoke Newington Station	306	0.19
	BP3194	Northwold Road / Stoke Newington Commo	258	0.16
SNEWBR	BP4241	Stoke Newington High Street	546	0.34
	1919	William Patten School	265	0.16
	15890	Bouverie Road	209	0.13
	1920	Stoke Newington Town Hall	368	0.23
	25132	Barbauld Road	304	0.19
	1922	Clissold Crescent	334	0.21
	1082	Green Lanes	433	0.27
NEWNGN	2442	Newington Green	141	0.09
	15891	Beresford Road	291	0.18
	907	Balls Pond Road	327	0.20
	2636	Essex Road / Marquess Road	195	0.12
	2632	Northchurch Road	303	0.19
ESXRSN	14920	Essex Road Station	409	0.25
	793	Cross Street	441	0.27
	2626	Packington Street	197	0.12
	791	Islington Green	188	0.12
ISLNHS	36602	Angel Station	307	0.19
	361	Pentonville Road / Baron Street	304	0.19
	1074	Penton Street / Chapel Market	188	0.12
	BP134	Penton Rise	332	0.21
	34940	King's Cross / Caledonian Road	377	0.23
KGXSGI	183	King's Cross Station	123	0.08
	14736	St Pancras International Station	285	0.18
	27622	British Library	263	0.16
EUSTER	20917	Euston Station	361	0.22
	672	Euston Square Station	167	0.10
	29674	Gower Street / University College Hosp	265	0.16
	BP2167	Torrington Place	160	0.10
	29676	Chenies Street	229	0.14
	29735	Great Russell Street	379	0.24
	35030	Tottenham Court Road Station	271	0.17
TCTROS	165	Oxford Street / Soho Street	298	0.19
	33924	Great Titchfield St / Oxford Circus Stn	580	0.36
OXFCHS	BP4269	Holles Street	641	0.40

Total Route Mileage - Back Direction 18754 11.65  
Metres Miles

## SECTION 2: PART A

### SERVICE SPECIFICATION FOR ROUTE Nos. 73 & N73

#### CONTENTS

	Page
1. Tenders Required	2
2. Proposed Changes	2
3. Terminals	3
4. Days of Operation	4
5. Vehicle Type	5
6. Frequencies	6
7. Minimum Performance Standards	13
8. Running Times	14
9. Layovers	14
10. Timing Constraints	15
11. Control Strategy	15
12. Operational Considerations	16
13. Stopping Arrangements	16
14. Timing Points and Mileages	17
15. Vehicle Livery	17
16. Stands and Blinds	18
 <u>Appendices</u>	
A. Route Record	19

---

This document should be read in conjunction with the Corporation's Guide for Tenderers (Part A: Explanatory Notes - Service Requirements). Where appropriate, reference is made to the relevant section.

## 1. TENDERS REQUIRED

This document describes the service for which the Corporation requires Tenders and Tenderers **must** submit a fully compliant bid. In addition, Tenderers **may** wish to draw upon their local knowledge to submit alternative bids which offer improved value for money in meeting passenger needs. These might incorporate, for example, different timings, frequencies, route structures and / or vehicles. The Corporation will welcome such bids and give them careful consideration.

For more information, please refer to Section 2.1 of Part A of the Guide for Tenderers.

## 2. PROPOSED CHANGES

At this time, the Corporation expects to implement a change to the existing service prior to the commencement of the new Route Agreement for Route Nos. 73 & N73.

- Since 16<sup>th</sup> January 2010, Route Nos. 73 & N73 have been temporarily withdrawn between Oxford Circus, Holles Street and Tottenham Court Road due to the closure of one lane in Oxford Street (in the eastbound direction) between Tottenham Court Road and Newman Street. Works are expected to continue until November 2010 so this should not affect the new contract. Towards Victoria Bus Station, buses are diverted from Oxford Street via Regent Street, Langham Place, Portland Place, Devonshire Street, Great Portland Street, Albany Street, Osnaburgh Terrace, Osnaburgh Street and Euston Road to re-join line of routeing. Buses operating towards Stoke Newington Common are unaffected.
- From 20<sup>th</sup> March 2010, in order to improve the day/night interface and to provide a more frequent service, ex Victoria Bus Station, 0048 and 0055 departures are re-timed to 0050 and 0110 respectively. Ex Stoke Newington Common, 2400 departure is re-timed to 0010. Therefore, between Route Nos. 73 & N73, ex Victoria Bus Station, services will depart every 7-8 minutes until 0040 (73), 0050 (73), 0100 (N73), 0110 (73) and 0130 (N73) on weeknights and an additional departure at 0016 (N73) on weekend nights. Ex Stoke Newington, services will depart every 7-8 minutes until 2352 (73), 0001 (N73), 0010 (73) and 0031 (N73) on weeknights and an additional departure at 0016 on weekend nights.

Tenderers should note that the following alterations (subject to consultation) are proposed as part of this Service Specification for introduction with the new Route Agreement:

- Double deck, dual door, 87 capacity vehicles are specified on Route Nos. 73 & N73, subject to a satisfactory route test.
- Route No. 73 is re-structured to operate between Victoria Bus Station and Stoke Newington Common at all times. The section between Stoke Newington Common and Seven Sisters Station is withdrawn.
- Mondays to Fridays AM peak frequencies are increased from every 3-4 minutes (17 buses per hour) to every 3-4 minutes (18 buses per hour).
- Ex Victoria Bus Station, three peak flow journeys are specified during the Mondays to Fridays AM peak to provide a frequency of every 2-3 minutes (21 buses per hour) between 0800 and 0900.

## 2. PROPOSED CHANGES - continued

- Ex Stoke Newington Common, six peak flow journeys are specified during the Mondays to Fridays AM peak to provide a frequency of every 2-3 minutes (24 buses per hour). The journeys are timed to arrive at Angel Station between 0745 and 0845.
- All evening frequencies are increased from every 7-8 minutes (8 buses per hour) to every 6 minutes.
- Saturday shopping period frequencies are increased from every 6 minutes to every 5 minutes.
- Sunday very early morning frequencies are increased from every 15 minutes to every 12 minutes.
- Sunday shopping period frequencies are increased from every 7-8 minutes (8 buses per hour) to every 6 minutes.
- Changes to the traffic day for Route No. 73 in line with demand and to improve the day/night interface.
- First departures on Saturdays and Sundays are standardised with Mondays to Fridays.
- Weekend night frequencies on Route No. N73 are increased from every 15 minutes to every 12 minutes.
- Journeys on Route No. N73 between Tottenham, Swan/Seven Sisters Station and Walthamstow Central Station are back projected/extended to Stoke Newington High Street, Church Street/Stoke Newington, Brooke Road.
- Some journeys on Route No. N73 are either withdrawn or re-timed to remove duplication with Route No. 73.
- **Tenderers must identify the cost of the Nightly element of this service separately.**

## 3. TERMINALS

Route No. 73 will operate between Victoria Bus Station and Stoke Newington Common.

Route No. N73 will operate between Victoria Bus Station and Walthamstow Central Station.

Full details of the route to be followed, the permitted terminal workings and the available stands are shown at Appendix A. Tenderers should particularly note the information relating to the shared usage of stands, the taking of meal reliefs and the use of ferry vehicles.

**4. DAYS OF OPERATION**

One timetable must be offered for Route Nos. 73 & N73 which will operate as follows:

DAY OF OPERATION	
Mondays to Fridays	Section 6.1
Saturdays & Good Friday	Section 6.2
Sundays	Section 6.3
Christmas Day	No service
Boxing Day	Section 6.4
Other Public Holidays	Sunday service
Sunday nights/Monday mornings to Thursday nights/Friday mornings	Section 6.5
Friday nights/Saturday mornings to Saturday nights/Sunday mornings	Section 6.6
New Year's Eve night/New Year's Day morning*	Friday nights/Saturday mornings to Saturday nights/Sunday mornings service
New Year's Eve night/New Year's Day morning*	Nightly service
Christmas Eve night/Christmas Day morning	No service
Christmas Day night/Boxing Day morning	No service

\* The New Year's Eve service level should be regarded as a minimum and any frequency increases and/or diversions will be discussed with the successful Tenderer on an annual basis.



## 5. VEHICLE TYPE

Please refer to Section 2.5 of Part A of the Guide for Tenderers.

Route No. 73 is currently approved for articulated vehicles which are a maximum of 18 metres long and 2.55 metres wide. A formal route test will be required for double deck vehicles. This will be arranged with the successful Tenderer.

Route No. N73 is currently approved for vehicles which are a maximum of 10.6 metres long and 2.55 metres wide. A formal route test will be required for vehicles which exceed these dimensions. This will be arranged with the successful Tenderer.

The service requirement set out in Section 6 assumes that dual door, double deck buses with a minimum capacity of 87 of which approximately 60 should be seated, will be used on Route Nos. 73 & N73. Luggage space should also be provided.

Tenderers must submit proposals based on new vehicles. These must be of a low floor design and be accessible to wheelchairs by means of a powered ramp.

**Bids for both conventional diesel powered vehicles and diesel-electric hybrid vehicles should be submitted and separate prices for both types are required.**

**Bids based on a mix of hybrid and conventional vehicles would be welcomed, subject to a minimum of 10 hybrid powered vehicles being offered for this route (full hybrid operation should be offered for routes with a vehicle requirement of less than 10).**

Tenderers should refer to the vehicle design (including accessibility) features contained in Schedule II to Annex B of the Framework Agreement and Section 2 Part B of the Master ITT (Version 2 issued June 2005).

Tenderers may also submit bids based on using existing vehicles. Tenderers are asked to specify what refurbishment would be carried out on existing buses and the expected timescale of those works. See Master ITT (Version 2 issued June 2005).

## 6. FREQUENCIES

The level of service (e.g. every 15 minutes) required by the Corporation is described in terms of the interval between departures. Whilst a completely regular service at the specified frequency should be possible at most times, occasionally a bus may be timetabled to depart up to five minutes earlier or later than the regular time.

Tenderers should note that when the specified frequency changes (e.g. between the peak and midday periods), the scheduled interval between buses should never be greater than that provided by the lower of the two frequencies **AT ANY POINT ON THE ROUTE**.

Tenderers should note that unless otherwise stated **all** journeys should operate between the terminal points defined in each direction.

## 6.1 Mondays to Fridays

### 1. Victoria Bus Station to Stoke Newington Common

0505 - 0630	Every 10 minutes
0631 - 0655	Every 8 minutes
0656 - 0800	Every 5 minutes
0801 - 0900	Every 2-3 minutes (21 buses per hour)
0901 - 1015	Every 3-4 minutes (18 buses per hour)
1016 - 1040	Every 4 minutes
1041 - 1555	Every 5 minutes
1556 - 2010	Every 4 minutes
2011 - 2105	Every 5 minutes
2106 - 0115	Every 6 minutes

First departure from Victoria Bus Station no later than 0510.

Last departure from Victoria Bus Station no earlier than 0110.

Tenderers should ensure that buses are scheduled to be no more than 5 minutes apart at Islington, Angel, High Street between 0740 and 0845, no more than 3 minutes apart between 0846 and 0945 and no more than 5 minutes apart between 1455 and 1655.

### 2. Stoke Newington Common to Victoria Bus Station

0430 - 0545	Every 10 minutes
0546 - 0600	Every 8 minutes
0601 - 0615	Every 5 minutes
0616 - 0720	Every 3-4 minutes (18 buses per hour)
0721 - 0820	Every 2-3 minutes (24 buses per hour)
0821 - 0920	Every 3-4 minutes (18 buses per hour)
0921 - 1415	Every 5 minutes
1416 - 1715	Every 4 minutes
1716 - 2000	Every 5 minutes
2001 - 0015	Every 6 minutes

First departure from Stoke Newington Common no later than 0435.

Last departure from Stoke Newington Common no earlier than 0010.

Tenderers should ensure that buses are scheduled to be no more than 3 minutes apart at Oxford Circus, Oxford Street between 0715 and 0915 and no more than 4 minutes apart between 1510 and 1630.

## 6.2 Saturdays & Good Friday

### 1. Victoria Bus Station to Stoke Newington Common

0505 - 0800	Every 10 minutes
0801 - 0830	Every 6 minutes
0831 - 2005	Every 5 minutes
2006 - 0115	Every 6 minutes

First departure from Victoria Bus Station no later than 0510.

Last departure from Victoria Bus Station no earlier than 0110.

Tenderers should ensure that buses are scheduled to be no more than 5 minutes apart at Islington, Angel, High Street between 0905 and 1105.

### 2. Stoke Newington Common to Victoria Bus Station

0430 - 0715	Every 10 minutes
0716 - 0745	Every 6 minutes
0746 - 1810	Every 5 minutes
1811 - 0015	Every 6 minutes

First departure from Stoke Newington Common no later than 0435.

Last departure from Stoke Newington Common no earlier than 0010.

Tenderers should ensure that buses are scheduled to be no more than 5 minutes apart at Oxford Circus, Oxford Street between 0825 and 1105.

## 6.3 Sundays

### 1. Victoria Bus Station to Stoke Newington Common

0505 - 0655	Every 12 minutes
0656 - 0915	Every 10 minutes
0916 - 0945	Every 7-8 minutes (8 buses per hour)
0946 - 0115	Every 6 minutes

First departure from Victoria Bus Station no later than 0510.  
Last departure from Victoria Bus Station no earlier than 0110.

Tenderers should ensure that buses are scheduled to be no more than 6 minutes apart at Islington, Angel, High Street between 1020 and 1130.

### 2. Stoke Newington Common to Victoria Bus Station

0430 - 0600	Every 12 minutes
0601 - 0750	Every 10 minutes
0751 - 0820	Every 7-8 minutes (8 buses per hour)
0821 - 0015	Every 6 minutes

First departure from Stoke Newington Common no later than 0435.  
Last departure from Stoke Newington Common no earlier than 0010.

Tenderers should ensure that buses are scheduled to be no more than 6 minutes apart at Oxford Circus, Oxford Street between 1050 and 1130.

## 6.4 Boxing Day

### 1. Victoria Bus Station to Stoke Newington Common

0815 - 0915	Every 10 minutes
0916 - 0945	Every 7-8 minutes (8 buses per hour)
0946 - 0115	Every 6 minutes

First departure from Victoria Bus Station no later than 0820.  
Last departure from Victoria Bus Station no earlier than 0110.

Tenderers should ensure that buses are scheduled to be no more than 6 minutes apart at Islington, Angel, High Street between 1020 and 1130.

### 2. Stoke Newington Common to Victoria Bus Station

0820 - 0015	Every 6 minutes
-------------	-----------------

First departure from Stoke Newington Common no later than 0825.  
Last departure from Stoke Newington Common no earlier than 0010.

Tenderers should ensure that buses are scheduled to be no more than 6 minutes apart at Oxford Circus, Oxford Street between 1050 and 1130.

## 6.5 Sunday nights/Monday mornings to Thursday nights/Friday mornings

1. Victoria Bus Station to Walthamstow Central Station

0125 - 0505            Every 30 minutes

First departure from Victoria Bus Station no later than 0130.  
Last departure from Victoria Bus Station no earlier than 0500.

2. Stoke Newington High Street, Church Street to Walthamstow Central Station

2340 - 0150            Every 30 minutes

First departure from Stoke Newington High Street, Church Street no later than 2345.  
Last departure from Stoke Newington High Street, Church Street no earlier than 0145.

3. Walthamstow Central Station to Victoria Bus Station

0005 - 0415            Every 30 minutes

First departure from Walthamstow Central Station no later than 0010.  
Last departure from Walthamstow Central Station no earlier than 0410.

4. Walthamstow Central Station to Stoke Newington, Brooke Road

0435 - 0615            Every 30 minutes

First departure from Walthamstow Central Station no later than 0440.  
Last departure from Walthamstow Central Station no earlier than 0610.

**Tenderers must identify the cost of the Nightly element of this service separately.**

## 6.6 Friday nights/Saturday mornings to Saturday nights/Sunday mornings

1. Victoria Bus Station to Walthamstow Central Station

0115 - 0505            Every 12 minutes

First departure from Victoria Bus Station no later than 0120.  
Last departure from Victoria Bus Station no earlier than 0500.

2. Stoke Newington High Street, Church Street to Walthamstow Central Station

2340 - 0205            Every 12 minutes

First departure from Stoke Newington High Street, Church Street no later than 2345.  
Last departure from Stoke Newington High Street, Church Street no earlier than 0200.

3. Stoke Newington High Street, Church Street to Walthamstow Central Station

0610                    One journey

4. Walthamstow Central Station to Victoria Bus Station

2355 - 0415            Every 12 minutes

First departure from Walthamstow Central Station no later than 2400.  
Last departure from Walthamstow Central Station no earlier than 0410.

5. Walthamstow Central Station to Stoke Newington, Brooke Road

0415 - 0615            Every 12 minutes

First departure from Walthamstow Central Station no later than 0420.  
Last departure from Walthamstow Central Station no earlier than 0610.

**Tenderers must identify the cost of the Nightly element of this service separately.**



## 7. MINIMUM PERFORMANCE STANDARDS

Please refer to Section 2.7 of Part A of the Guide for Tenderers.

Tenderers should note that the objective of the Operator of Route No. 73 shall be to operate all scheduled mileage and adhere **fully** to the published timetable. The Operator must use its best endeavours to achieve this.

The **minimum** standards of acceptable performance for Route No. 73 shall be:

Average Excess Wait Time:	No more than 1.20 minutes
Minimum Operated Mileage:	No less than 98.00%

The **minimum** standards of acceptable performance for Route No. N73 shall be:

Departing on Time	No less than 85.00%
Minimum Operated Mileage	No less than 99.00%

or as notified by the Corporation from time to time. The Operator will be required to achieve or better the standards.

It is unlikely that the minimum number of QSI surveys for performance measurement will be conducted on Route No. N73 at present. However, this may change at a later date.

### QSI Thresholds

The QSI threshold is the standard of performance to be achieved by the operator in order to qualify for an automatic contract extension (in accordance with Schedule IX of the Framework Agreement).

Average Excess Wait Time Threshold = 1.05 minutes

It is unlikely that the minimum number of QSI surveys for Threshold measurement will be conducted on Route No. N73 at present. However, this may change at a later date when a Threshold figure may be published.

### Summary of proposed QSI coverage: Route Nos. 73 & N73

Note: While London Buses undertakes to carry out QSI surveys at the times and locations specified below, it may prove impossible to rearrange a survey cancelled or nullified at short notice.

### Survey locations

#### Towards Stoke Newington Common

Victoria  
Oxford Circus  
Euston  
Islington Angel

#### Towards Victoria Bus Station

Stoke Newington  
Islington Angel  
Euston  
Oxford Circus

Total scheduled manual QSI surveys per quarter = 128.

## 8. RUNNING TIMES

The current timetables for Route Nos. 73 & N73 can be viewed by prospective Tenderers on Caesar. Attention is drawn to the variations in running times at different times of the day. Please refer to Section 2.8 of Part A of the Guide for Tenderers for further information.

Tenderers should carefully check the existing running times to ensure that they are appropriate in present traffic conditions. Tenderers should particularly check the existing running times for the Saturday afternoon shopping period and the Sunday shopping period on Route No. 73.

Tenderers should carefully check the existing running times **during Saturday and Sunday nights** on Route No. N73 to ensure that they are appropriate in present traffic conditions.

When reviewing existing, and devising new, running times Tenderers should refer to:

- the minimum performance standards for Route Nos. 73 & N73 in Section 7 above;
- the historical performance data provided in Section 1 Part B of the introduction to this ITT.

Tenderers should allow for realistic increases in daily running times for operation with low-floor, dual door, double-deck buses. As a guide, the Corporation estimates that running times should increase by approximately 3% for dual door, double deck buses when compared to articulated operation.

Tenderers may consider if school summer holiday schedules, incorporating running time reductions, are desirable for this route. In this event, schedules and costs must be submitted separately.

## 9. LAYOVERS

Under normal circumstances, layover time on stands and at bus stations should be restricted to that required to provide a reliable service. Longer layovers for any other purpose may only be taken with the permission of the Corporation.

## 10. TIMING CONSTRAINTS

Route No. 73 should interwork with Route No. N73 to form a seamless 24 hour service between Victoria Bus Station and Newington Green.

Route No. 73 should be separated from Route No. 476 between Euston Station and Stoke Newington Common during all periods, where possible.

Route No. N73 should interwork with Route No. 476 to form a seamless 24 hour service between Euston Station and Seven Sisters Station, Tottenham High Road.

Route No. N73 should interwork with Route No. 230 to form a seamless 24 hour service between Tottenham, Swan and Walthamstow Central Station.

Tenderers submitting bids should bear this requirement in mind when compiling schedules. This requirement will be negotiated with the successful Tenderer for this route to ensure that optimal interworking/separation is delivered within its schedules.

## 11. CONTROL STRATEGY

Route Nos. 73 & N73 can suffer from the effects of traffic congestion, making some form of route control essential in order to achieve or better the minimum performance standards for this route.

Tenderers should submit proposals on the control strategy they intend to adopt and the type of control they would intend to use by completing the form provided in Section 3: Part 7 of this ITT. The cost of this control should be included within the main Tender price.

Tenderers should also indicate how they intend to facilitate driver changeovers and meal reliefs for this route.

Further information is provided in Section 2.11 of Part A of the Guide for Tenderers.

## 12. OPERATIONAL CONSIDERATIONS

Tenderers should note the following operating considerations affecting Route Nos. 73 & N73:

- Route No. 73 can suffer from major disruption in the Tottenham area during home matches of Tottenham Football Club.
- Route No. 73 can suffer from unpredictable traffic delays throughout the route at all times, particularly during peak periods.
- There is limited stand space at Victoria Station.
- TfL is committed to reduce bus flows by 10% on Oxford Street in 2010.

Tenderers should also note the following factors/events which may have an impact on Route Nos. 73 & N73 in the foreseeable future:

- The re-building of the Victoria Line Station has commenced. Works are likely to last until the end of 2015. During this period routeings and stopping and standing arrangements in the area may be subject to change. Any such changes will be discussed with the successful Tenderer as appropriate.
- Ongoing LUL and Crossrail works at Tottenham Court Road are being carried out that will involve various closures and diversions around St. Giles Circus that will affect operation to varying degrees over the life of the contract until forecast completion in 2017.
- Crossrail will connect the City, Canary Wharf, the West End and Heathrow Airport to commuter areas east and west of the capital. Major construction of the railway will begin in 2010, with services commencing in 2017. The construction impacts of Crossrail could affect Route Nos. 73 & N73 and it is anticipated that some passenger demand for Route Nos. 73 & N73 would shift to this line when it opens. Route Nos. 73 & N73 will be reviewed closer to the opening date.

The above factors have been included to assist Tenderers and represents the information currently available to the Corporation. Tenderers should make their own enquiries about events which may impact upon the route and should form their own views about their likely effect upon it.

## 13. STOPPING ARRANGEMENTS

Buses operating on Route Nos. 73 & N73 must serve all stops on the line of route designated for the route.

## 14. TIMING POINTS & MILEAGES

### Timing Points

The required timing points (and codes) are shown in Caesar.

### Mileages for Route Nos. 73 & N73

Victoria Bus Station to Stoke Newington Common	8.5 miles
Stoke Newington Common to Victoria Bus Station	8.4 miles
Victoria Bus Station to Walthamstow Central Station	13.3 miles
Walthamstow Central Station to Victoria Bus Station	13.4 miles
Stoke Newington High Street, Church Street to Walthamstow Central Station	5.7 miles
Walthamstow Central Station to Stoke Newington, Brooke Road	5.2miles

Tenderers should note that:

- these measurements are believed to be accurate to within 0.5 miles, but no warranty or representation as to accuracy is given;
- out of service stand workings have not been measured and are not included within the above measurements;
- if alternative or additional measurements are used by the Tenderer, these must be stated in the tender submission;
- point to point measurements pertaining to recognised curtailment points or alternative terminals will be agreed with the successful Tenderer once the contract has been awarded.

## 15. VEHICLE LIVERY

All vehicles to be used on Route Nos. 73 & N73 from the commencement of the new Route Agreement must be in a livery that is exclusively Corporation red. The paint should be matched accurately to the colour as defined by the following manufacturer's specifications:

ICI London Bus Red P498 FPF 3

Other manufacturers should also be able to produce this specification from the ICI colour chart.

This requirement does not include the lower panels which may be in a different colour but which shall not exceed 50cm in height, or the rooftop which should be painted white so as to reduce temperatures inside the vehicle during the summer months.

The positioning and size of Operators' logos are to be agreed between the Operator and the Corporation and, where possible, these should be above the front doors on the nearside of the vehicles and above the drivers' offside cab windows.

All livery proposals must be submitted to the Contracts Tendering Manager for approval.

## 16. STANDS AND BLINDS

Tenderers should note that under normal circumstances, the specific restrictions relating to each stand will apply to the whole stand at all times. Any variation to such standing arrangements must be agreed by the Corporation. In addition, Tenderers should note the following general requirements:

- 1) Drivers MUST switch off engines during layover periods at bus stations or on stands.
- 2) No meal reliefs may be taken on any stand (on or off line of route) without the permission of the Corporation.
- 3) No crew ferry vehicles may enter any stand (on or off line of route) without the permission of the Corporation.
- 4) Destination blind displays to be used are shown under each stand description. Tenderers may suggest, within their bids, alternative blind displays.
- 5) The intermediate (also known as via) blind display to be used on the nearside of the vehicle is shown in the box below:

73 via King's Cross
---------------------

N73 via Stoke Newington
-------------------------

For further information, please refer to Annex C of the Framework Agreement: General Conditions relating to the use of London Buses' Bus Stations and Stands.

# LONDON BUSES - ROUTE DESCRIPTION

## ROUTE 73: Victoria Station - Stoke Newington

**Date of Structural Change:** 3 September 2011.

**Date of Service Change:** 3 September 2011.

**Reason for Issue:** New Tender.

### **STREETS TRAVERSED**

**Towards Stoke Newington:** Victoria Bus Station, Bay D, Wilton Road, Victoria Street, Grosvenor Gardens, Grosvenor Place, Hyde Park Corner, Park Lane, Cumberland Gate, Tyburn Way, Marble Arch, Oxford Street, Tottenham Court Road, Euston Road, Euston Bus Station, Grafton Place, Churchway, Euston Road, Pentonville Road, Baron Street, White Lion Street, Islington High Street, Upper Street, Islington Green, Essex Road, Newington Green Road, Newington Green (West Side), Albion Road, Stoke Newington Church Street, Stoke Newington High Street, Northwold Road, Stoke Newington Common.

**Towards Victoria Station:** Stoke Newington Common, Rectory Road, Brooke Road, Stoke Newington High Street, Stoke Newington Church Street, Albion Road, Newington Green (North Side), Newington Green (East Side), Newington Green (South Side), Newington Green Road, Essex Road, Islington Green, Upper Street, Islington High Street, Pentonville Road, King's Cross Bridge, Gray's Inn Road, Euston Road, Gower Street, Bedford Square, Bloomsbury Street, New Oxford Street, Oxford Street, Park Lane, Hyde Park Corner, Duke Of Wellington Place, Grosvenor Place, Lower Grosvenor Place, Buckingham Palace Road, Terminus Place, Victoria Bus Station, Bay D.

## **STANDING AND TURNING POINTS**

### **VICTORIA BUS STATION, STAND D**

Private stand for 5 buses in Bay D in Victoria Bus Station on Victoria Station Forecourt. Buses proceed from Victoria Bus Station via Bay D to stand, departing via Victoria Bus Station to Bay D. Set down in Victoria Bus Station, Bay D, at Stop D and pick up in Victoria Bus Station, Bay D, at Stop D.

AVAILABILITY:	At any time.
OPERATING RESTRICTIONS:	No more than 4 buses on Route 73 should be scheduled to stand at any one time.
MEAL RELIEFS:	No meal relief vehicles to stand at any time.
FERRY VEHICLES:	No ferry vehicles to park on stand at any time.
DISPLAY:	Victoria.
OTHER INFORMATION:	Drivers must move buses forward as preceding buses depart. Toilets available on 73 bay at Victoria Bus Station.

### **HYDE PARK CORNER, ACHILLES WAY (from STOKE NEWINGTON)**

Public stand for two buses on the south side (offside) of Achilles Way, commencing 18 metres west of the southbound carriageway of Park Lane and extending 20 metres west. Buses proceed from Park Lane via Achilles Way to stand, departing via Achilles Way to Park Lane. Set down in Park Lane, at Stop B and pick up in Park Lane, at Stop Y.

AVAILABILITY:	At any time.
OPERATING RESTRICTIONS:	Unscheduled curtailments only.
MEAL RELIEFS:	No meal relief vehicles to stand at any time.
FERRY VEHICLES:	No ferry vehicles to park on stand at any time.
DISPLAY:	Park Lane, Hilton Hotel.



## **MARBLE ARCH, TYBURN WAY**

Public stand for three buses on west side of Tyburn Way, commencing 1 metre south of lamp standard No 20512 and extending 33 metres south.

### From Stoke Newington.

Buses proceed from Oxford Street via Park Lane, Cumberland Gate and Tyburn Way to stand, departing via Tyburn Way and Marble Arch to Oxford Street. Set down in Park Lane, at Stop R and pick up in Oxford Street, at Stop K.

### From Victoria Station.

Buses proceed from Park Lane via Cumberland Gate and Tyburn Way to stand, departing via Tyburn Way and Marble Arch to Park Lane. Set down in Park Lane, at Stop W and pick up in Park Lane, at Stop R.

AVAILABILITY:	At any time.
OPERATING RESTRICTIONS:	Unscheduled curtailments only.
MEAL RELIEFS:	No meal relief vehicles to stand at any time.
FERRY VEHICLES:	No ferry vehicles to park on stand at any time.
DISPLAY:	Marble Arch.
OTHER INFORMATION:	Limited stand space; buses should stand for minimal time only.

## **OXFORD CIRCUS, HOLLES STREET, WEST SIDE (from STOKE NEWINGTON)**

Public stand for 6 buses (or 4 articulated buses) on west side of Holles Street commencing 14 metres south of Cavendish Square and extending 76 metres south.

Buses proceed from Oxford Street via Regent Street, Hanover Street, Hanover Square, Harewood Place and Holles Street to stand, departing via Holles Street, Cavendish Square, Henrietta Place and Vere Street to Oxford Street. Set down in Holles Street, at Alighting Point and pick up in Oxford Street, at Stop OF.

AVAILABILITY:	At any time.
OPERATING RESTRICTIONS:	Unscheduled curtailments only.
MEAL RELIEFS:	No meal relief vehicles to stand at any time.
FERRY VEHICLES:	No ferry vehicles to park on stand at any time.
DISPLAY:	Oxford Circus.

### **OXFORD CIRCUS, JOHN PRINCES STREET (SOUTH EAST) (from Victoria Station)**

Public stand for two buses on east side of John Princes Street, commencing at the party wall of Nos 2/3 and extending 28 metres north.

Buses proceed from Oxford Street via Regent Street, Margaret Street and John Prince's Street to stand, departing via John Prince's Street to Oxford Street. Set down in Oxford Street, at Stop OF and pick up in Oxford Street, at Stop OR.

AVAILABILITY: At any time.  
OPERATING RESTRICTIONS: Unscheduled curtailments only.  
MEAL RELIEFS: No meal relief vehicles to stand at any time.  
FERRY VEHICLES: No ferry vehicles to park on stand at any time.  
DISPLAY: Oxford Circus.

### **WARREN STREET STATION, GRAFTON WAY (from Victoria Station)**

Public stand for one bus on south side of Grafton Way, commencing 1 metre east from lamp standard 3 and extending 18 metres south east.

Buses proceed from Tottenham Court Road via Hampstead Road, Euston Road, Gower Street and Grafton Way to stand, departing via Grafton Way, Tottenham Court Road, Hampstead Road and Euston Road to Gower Street. Set down in Tottenham Court Road, at Stop X and pick up in Gower Street, at Stop N.

AVAILABILITY: At any time.  
OPERATING RESTRICTIONS: Unscheduled curtailments only  
MEAL RELIEFS: No meal relief vehicles to stand at any time.  
FERRY VEHICLES: No ferry vehicles to park on stand at any time.  
DISPLAY: Euston.

### **WARREN STREET STATION, GRAFTON WAY (from STOKE NEWINGTON)**

Public stand for one bus on south side of Grafton Way, commencing 1 metre east from lamp standard 3 and extending 18 metres south east.

Buses proceed from Euston Road via Gower Street and Grafton Way to stand, departing via Grafton Way to Tottenham Court Road. Set down in Euston Road, at Stop P and pick up in Tottenham Court Road, at Stop X.

AVAILABILITY: At any time.  
OPERATING RESTRICTIONS: Unscheduled curtailments only  
MEAL RELIEFS: No meal relief vehicles to stand at any time.  
FERRY VEHICLES: No ferry vehicles to park on stand at any time.  
DISPLAY: Warren Street.

## **EUSTON BUS STATION, NORTH STAND**

Private stand for two buses on route 253 on north side of centre lane in Euston Bus Station.

### From Stoke Newington.

Buses proceed from Euston Road via Churchway, Grafton Place and Euston Bus Station to stand, departing to Euston Bus Station. Set down in Euston Road, at Stop B and pick up in Euston Bus Station, at Stop D.

### From Victoria Station.

Buses proceed from Euston Bus Station direct to stand, departing via Euston Bus Station, Grafton Place and Churchway to Euston Road. Set down in Euston Bus Station, at Stop D and pick up in Euston Road, at Stop P.

AVAILABILITY:	At any time.
OPERATING RESTRICTIONS:	No more than 1 bus on Route 73 should be scheduled to stand at any one time.
MEAL RELIEFS:	No meal relief vehicles to stand at any time.
FERRY VEHICLES:	No ferry vehicles to park on stand at any time.
DISPLAY:	Euston.

## **KINGS CROSS, YORK WAY**

Public stand for 10 buses on west side of York Way commencing opposite and 31 metres south of Wharfdale Road extending 112 metres south.

### From Stoke Newington.

Buses proceed from Pentonville Road via King's Cross Bridge, Gray's Inn Road and York Way to stand, departing via York Way, Goods Way and Midland Road to Euston Road. Set down in Pentonville Road, at Stop X and pick up in Euston Road, at Stop E.

### From Victoria Station.

Buses proceed from Euston Road via York Way to stand, departing via York Way, Wharfdale Road, Caledonian Road and King's Cross Bridge to Gray's Inn Road. Set down in Euston Road, at Stop E and pick up in Gray's Inn Road, at Stop R.

AVAILABILITY:	At any time.
OPERATING RESTRICTIONS:	Unscheduled curtailments only.
MEAL RELIEFS:	No meal relief vehicles to stand at any time.
FERRY VEHICLES:	No ferry vehicles to park on stand at any time.
DISPLAY:	Kings Cross.

### **ISLINGTON ANGEL, WHITE LION STREET (from STOKE NEWINGTON)**

Stand on north side of White Lion Street.

Buses proceed from Pentonville Road via Baron Street and White Lion Street to stand, departing to White Lion Street. Set down in Pentonville Road, at Stop R and pick up in White Lion Street, at Stop U.

AVAILABILITY:	At any time.
OPERATING RESTRICTIONS:	Unscheduled curtailments only
MEAL RELIEFS:	No meal relief vehicles to stand at any time.
FERRY VEHICLES:	No ferry vehicles to park on stand at any time.
DISPLAY:	Islington Angel.

### **ISLINGTON GREEN, ESSEX ROAD (from Victoria Station)**

Located on north side of Essex Road, approx 50m north of junction with Upper Street.

Buses proceed from Islington Green direct to stand, departing via Islington Green, Essex Road and Cross Street to Upper Street. Set down in Islington Green, at Stop AP and pick up in Upper Street, at Stop F.

AVAILABILITY:	At any time.
OPERATING RESTRICTIONS:	Unscheduled curtailments only
MEAL RELIEFS:	No meal relief vehicles to stand at any time.
FERRY VEHICLES:	No ferry vehicles to park on stand at any time.
DISPLAY:	Islington Green.

### **MILDMAY PARK, DOVE ROAD**

Public stand for three buses on south side of Dove Road, commencing at a point 52.4 metres east of Essex Road and extending 38.8 metres east.

#### From Stoke Newington.

Buses proceed from Newington Green (East Side) via Mildmay Park, Southgate Road and Dove Road to stand, departing via Dove Road and Essex Road to Newington Green Road. Set down in Newington Green (east Side), at Stop NE and pick up in Newington Green Road, at Stop CJ.

#### From Victoria Station.

Buses proceed from Newington Green (West Side) via Newington Green (North Side), Newington Green (East Side), Mildmay Park, Southgate Road and Dove Road to stand, departing via Dove Road to Essex Road. Set down in Newington Green (west Side), at Stop NK and pick up in Essex Road, at Stop CG.

AVAILABILITY:	At any time.
OPERATING RESTRICTIONS:	Unscheduled curtailments only
MEAL RELIEFS:	No meal relief vehicles to stand at any time.
FERRY VEHICLES:	No ferry vehicles to park on stand at any time.
DISPLAY:	Essex Road, Balls Pond Road.

## **NEWINGTON GREEN**

### From Stoke Newington.

Buses proceed from Newington Green (East Side) via Newington Green (South Side) departing to Newington Green (West Side). Set down in Newington Green (east Side), at Stop NE and pick up in Newington Green (west Side), at Stop NK.

### From Victoria Station.

Buses proceed from Newington Green (West Side) via Newington Green (North Side) departing to Newington Green (East Side). Set down in Newington Green (west Side), at Stop NK and pick up in Newington Green (east Side), at Stop NE.

AVAILABILITY: At any time.  
OPERATING RESTRICTIONS: **Turning Point Only - Buses must not stand**  
DISPLAY: Newington Green.

## **STOKE NEWINGTON COMMON, SOUTH SIDE**

Public stand in Stoke Newington Common in 2 parts.

1 - On south side, commencing behind the 33m bus stop cage and extending 53m east.

2 - Overflow stand on north side (offside), commencing at lamp standard No 4 and extending 45 metres east.

Buses proceed from Stoke Newington Common direct to stand, departing to Stoke Newington Common. Set down in Stoke Newington Common, at Stop J and pick up in Stoke Newington Common, at Stop K.

AVAILABILITY: At any time.  
OPERATING RESTRICTIONS: No more than 5 buses on Route 73 should be scheduled to stand at any one time.  
MEAL RELIEFS: No meal relief vehicles to stand at any time.  
FERRY VEHICLES: No ferry vehicles to park on stand at any time.  
DISPLAY: Stoke Newington.  
OTHER INFORMATION: Toilets available on stand 24 hours.

# LONDON BUSES - ROUTE DESCRIPTION

## ROUTE N73: Victoria Station - Walthamstow Central Station

**Date of Structural Change:** 3 September 2011.

**Date of Service Change:** 3 September 2011.

**Reason for Issue:** New Tender.

### **STREETS TRAVERSED**

**Towards Walthamstow Central Station:** Victoria Bus Station, Bay D, Wilton Road, Victoria Street, Grosvenor Gardens, Grosvenor Place, Hyde Park Corner, Park Lane, Cumberland Gate, Tyburn Way, Marble Arch, Oxford Street, Tottenham Court Road, Euston Road, Euston Bus Station, Grafton Place, Churchway, Euston Road, Pentonville Road, Baron Street, White Lion Street, Islington High Street, Upper Street, Islington Green (East Side), Essex Road, Newington Green Road, Newington Green (West Side), Albion Road, Stoke Newington Church Street, Stoke Newington High Street, Stamford Hill, Tottenham High Road, Monument Way, Monument Way Bus Lane, Monument Way, Hale Road, Tottenham Hale Station Forecourt, Watermead Way, Hale Road, Ferry Lane, Forest Road, Hoe Street, Selborne Road, Walthamstow Central Bus Station.

**Towards Victoria Station:** Walthamstow Central Bus Station, Selborne Road, Hoe Street, Forest Road, Ferry Lane, Broad Lane, Tottenham High Road, Stamford Hill, Northwold Road, Rectory Road, Brooke Road, Stoke Newington High Street, Stoke Newington Church Street, Albion Road, Newington Green (North Side), Newington Green (East Side), Newington Green (South Side), Newington Green Road, Essex Road, Islington Green (East Side), Upper Street, Islington High Street, Pentonville Road, King's Cross Bridge, Gray's Inn Road, Euston Road, Gower Street, Bedford Square (East Side), Bloomsbury Street, New Oxford Street, Oxford Street, Park Lane, Hyde Park Corner, Duke Of Wellington Place, Grosvenor Place, Lower Grosvenor Place, Buckingham Palace Road, Terminus Place, Victoria Bus Station, Bay D.

## **STANDING AND TURNING POINTS**

### **VICTORIA BUS STATION, STAND D**

Private stand for 5 buses in Bay D in Victoria Bus Station on Victoria Station Forecourt. Buses proceed from Victoria Bus Station via Bay D to stand, departing via Victoria Bus Station to Bay D. Set down in Victoria Bus Station, Bay D, at Stop D and pick up in Victoria Bus Station, Bay D, at Stop D.

AVAILABILITY:	At any time.
OPERATING RESTRICTIONS:	No more than 2 buses on Route N73 should be scheduled to stand at any one time.
MEAL RELIEFS:	No meal relief vehicles to stand at any time.
FERRY VEHICLES:	No ferry vehicles to park on stand at any time.
DISPLAY:	Victoria.
OTHER INFORMATION:	LBSL toilet facilities available 24hrs a day.

### **HYDE PARK CORNER, ACHILLES WAY (from Walthamstow Central Station)**

Public stand for two buses on the south side (offside) of Achilles Way, commencing 18 metres west of the southbound carriageway of Park Lane and extending 20 metres west. Buses proceed from Park Lane (Southbound Then Northbound) via Achilles Way to stand, departing via Achilles Way to Park Lane (Southbound). Set down in Park Lane, at Stop B and pick up in Park Lane, at Stop Y.

AVAILABILITY:	At any time.
OPERATING RESTRICTIONS:	Unscheduled curtailments only.
MEAL RELIEFS:	No meal relief vehicles to stand at any time.
FERRY VEHICLES:	No ferry vehicles to park on stand at any time.
DISPLAY:	Park Lane, Hilton Hotel.

## **MARBLE ARCH, TYBURN WAY**

Public stand for three buses on west side of Tyburn Way, commencing 1 metre south of lamp standard No 20512 and extending 33 metres south.

### From Victoria Station.

Buses proceed from Park Lane via Cumberland Gate and Tyburn Way to stand, departing via Tyburn Way and Marble Arch to Park Lane. Set down in Park Lane, at Stop W and pick up in Park Lane, at Stop R.

### From Walthamstow Central Station.

Buses proceed from Oxford Street via Park Lane, Cumberland Gate and Tyburn Way to stand, departing via Tyburn Way and Marble Arch to Oxford Street. Set down in Oxford Street, at Stop BX and pick up in Oxford Street, at Stop K.

AVAILABILITY:	At any time.
OPERATING RESTRICTIONS:	Unscheduled curtailments only.
MEAL RELIEFS:	No meal relief vehicles to stand at any time.
FERRY VEHICLES:	No ferry vehicles to park on stand at any time.
DISPLAY:	Marble Arch.

## **OXFORD CIRCUS, JOHN PRINCES STREET (SOUTH EAST) (from VICTORIA STATION)**

Public stand for two buses on east side of John Princes Street, commencing at the party wall of Nos 2/3 and extending 28 metres north.

Buses proceed from Oxford Street via Regent Street, Margaret Street and John Prince's Street to stand, departing via John Prince's Street to Oxford Street. Set down in Oxford Street, at Stop OF and pick up in Oxford Street, at Stop OR.

AVAILABILITY:	At any time.
OPERATING RESTRICTIONS:	Unscheduled curtailments only.
MEAL RELIEFS:	No meal relief vehicles to stand at any time.
FERRY VEHICLES:	No ferry vehicles to park on stand at any time.
DISPLAY:	Oxford Circus.



## **OXFORD CIRCUS, HOLLES STREET, WEST SIDE (from Walthamstow Central Station)**

Public stand for 6 buses (or 4 articulated buses) on west side of Holles Street commencing 14 metres south of Cavendish Square and extending 76 metres south.

Buses proceed from Oxford Street via Regent Street, Hanover Street, Hanover Square (South And West And North Sides), Harewood Place and Holles Street to stand, departing via Holles Street, Cavendish Square (South Side), Henrietta Place and Vere Street to Oxford Street. Set down in Holles Street, at Alighting Point and pick up in Oxford Street, at Stop OF.

AVAILABILITY:	At any time.
OPERATING RESTRICTIONS:	Unscheduled curtailments only.
MEAL RELIEFS:	No meal relief vehicles to stand at any time.
FERRY VEHICLES:	No ferry vehicles to park on stand at any time.
DISPLAY:	Oxford Circus.

## **EUSTON BUS STATION, REAR STAND**

Private stand for two buses on Route 476 in rear corner of Euston Bus Station.

### From Victoria Station.

Buses proceed from Euston Bus Station direct to stand, departing via Euston Bus Station, Grafton Place and Churchway to Euston Road. Set down in Euston Bus Station, at Stop D and pick up in Euston Road, at Stop H.

### From Walthamstow Central Station.

Buses proceed from Euston Road via Churchway, Grafton Place and Euston Bus Station to stand, departing to Euston Bus Station. Set down in Euston Bus Station, at Alighting Point and pick up in Euston Bus Station, at Stop D.

AVAILABILITY:	At any time.
OPERATING RESTRICTIONS:	Unscheduled curtailments only.
MEAL RELIEFS:	No meal relief vehicles to stand at any time.
FERRY VEHICLES:	No ferry vehicles to park on stand at any time.
DISPLAY:	Euston.

## **KINGS CROSS, YORK WAY**

Public stand for 10 buses on west side of York Way commencing opposite and 31 metres south of Wharfdale Road extending 112 metres south.

### From Victoria Station.

Buses proceed from Euston Road via York Way to stand, departing via York Way, Wharfdale Road, Caledonian Road and King's Cross Bridge to Gray's Inn Road. Set down in Euston Road, at Stop E and pick up in Gray's Inn Road, at Stop R.

### From Walthamstow Central Station.

Buses proceed from Pentonville Road via King's Cross Bridge, Gray's Inn Road and York Way to stand, departing via York Way, Goods Way and Midland Road to Euston Road. Set down in Pentonville Road, at Stop X and pick up in Euston Road, at Stop E.

AVAILABILITY:	At any time.
OPERATING RESTRICTIONS:	Unscheduled curtailments only.
MEAL RELIEFS:	No meal relief vehicles to stand at any time.
FERRY VEHICLES:	No ferry vehicles to park on stand at any time.
DISPLAY:	King's Cross.

## **ISLINGTON, ANGEL (GOSWELL ROAD) (from Walthamstow Central Station)**

Public stand on north west side of Goswell Road in two portions:

1 - for three buses, commencing opposite the part wall of no.332 and extending 30 metres north west.

2 - for two buses, commencing opposite no.356 and extending 21 metres north west.  
Buses proceed from Upper Street via Islington High Street, City Road, Wakley Street and Goswell Road to stand, departing via Goswell Road, City Road and Islington High Street to Upper Street. Set down in Upper Street, at Stop F and pick up in Upper Street, at Stop X.

AVAILABILITY:	At any time.
OPERATING RESTRICTIONS:	Unscheduled curtailments only.
MEAL RELIEFS:	No meal relief vehicles to stand at any time.
FERRY VEHICLES:	No ferry vehicles to park on stand at any time.
DISPLAY:	Islington Angel.

## **NEWINGTON GREEN, SOUTH SIDE**

Public stand for two buses on south side of Newington Green, commencing 29 metres east of the centre of Newington Green Road and extending 27 metres east.

### From Victoria Station.

Buses proceed from Newington Green (West Side) via Newington Green (North Side), Newington Green (East Side) and Newington Green (South Side) to stand, departing via Newington Green (South Side) to Newington Green Road. Set down in Newington Green (east Side), at Stop NE and pick up in Newington Green Road, at Stop CA.

### From Walthamstow Central Station.

Buses proceed from Newington Green (North Side) via Newington Green (East Side) and Newington Green (South Side) to stand, departing via Newington Green (South Side) to Newington Green (West Side). Set down in Newington Green (east Side), at Stop NE and pick up in Newington Green (west Side), at Stop NK.

AVAILABILITY:	At any time.
OPERATING RESTRICTIONS:	Unscheduled curtailments only.
MEAL RELIEFS:	No meal relief vehicles to stand at any time.
FERRY VEHICLES:	No ferry vehicles to park on stand at any time.
DISPLAY:	Newington Green.

## **STOKE NEWINGTON COMMON, SOUTH SIDE**

Public stand in Stoke Newington Common in 2 parts.

1 - On south side, commencing behind the 33m bus stop cage and extending 53m east.

2 - Overflow stand on north side (offside), commencing at lamp standard No 4 and extending 45 metres east.

### From Victoria Station.

Buses proceed from Stoke Newington High Street via Northwold Road and Stoke Newington Common to stand, departing via Stoke Newington Common and Rectory Road to Brooke Road. Set down in Stoke Newington Common, at Alighting Point and pick up in Brooke Road, at Stop U.

### From Walthamstow Central Station.

Buses proceed from Northwold Road via Stoke Newington Common to stand, departing via Stoke Newington Common, Rectory Road and Brooke Road to Stoke Newington High Street. Set down in Stoke Newington Common, at Alighting Point and pick up in Stoke Newington High Street, at Stop X.

AVAILABILITY:	At any time.
OPERATING RESTRICTIONS:	Unscheduled curtailments only.
MEAL RELIEFS:	No meal relief vehicles to stand at any time.
FERRY VEHICLES:	No ferry vehicles to park on stand at any time.
DISPLAY:	Stoke Newington.

## **STAMFORD HILL, ROOKWOOD ROAD, EAST SIDE**

Public stand for 3 buses in two sections (16.5 and 24.5 metres) on east side of Rookwood Road outside Stamford Hill Bus Garage commencing level with lamp standard No. 3 and extending overall 77.5 metres north.

### From Victoria Station.

Buses proceed from Stamford Hill via Egerton Road and Rookwood Road to stand, departing via Rookwood Road and Clapton Common to Stamford Hill. Set down in Stamford Hill, at Stop SD and pick up in Stamford Hill, at Stop SL.

### From Walthamstow Central Station.

Buses proceed from Stamford Hill via Egerton Road and Rookwood Road to stand, departing via Rookwood Road and Clapton Common to Stamford Hill. Set down in Stamford Hill, at Stop SK and pick up in Stamford Hill, at Stop SE.

AVAILABILITY:	At any time.
OPERATING RESTRICTIONS:	Unscheduled curtailments only.
MEAL RELIEFS:	No meal relief vehicles to stand at any time.
FERRY VEHICLES:	No ferry vehicles to park on stand at any time.
DISPLAY:	Stamford Hill.

## **TOTTENHAM, TOWN HALL APPROACH ROAD (from VICTORIA STATION)**

Public stand for 2 buses on east side of Town Hall Approach Road commencing 26 metres north of lamp standard No. TA7A and extending 24 metres north.

Buses proceed from Tottenham High Road via Philip Lane and Town Hall Approach Road to stand, departing via Town Hall Approach Road to Tottenham High Road. Set down in Tottenham High Road, at Stop W and pick up in Tottenham High Road, at Stop Q.

AVAILABILITY:	At any time.
OPERATING RESTRICTIONS:	Unscheduled curtailments only
MEAL RELIEFS:	No meal relief vehicles to stand at any time.
FERRY VEHICLES:	No ferry vehicles to park on stand at any time.
DISPLAY:	Tottenham, Town Hall.

## **TOTTENHAM HALE STATION, BUS STATION (from VICTORIA STATION)**

Private stand for 3 buses on east and north side of Tottenham Hale Station Forecourt commencing level with Alighting Stop R0304 and extending approximately 30 metres north. Buses proceed from Tottenham Hale Station Forecourt direct to stand, departing via Tottenham Hale Station Forecourt, Watermead Way, Hale Road and Ferry Lane to Broad Lane. Set down in Tottenham Hale Station Forecourt, at Stop AP and pick up in Broad Lane, at Stop X.

AVAILABILITY: At any time.  
OPERATING RESTRICTIONS: Unscheduled curtailments only  
MEAL RELIEFS: No meal relief vehicles to stand at any time.  
FERRY VEHICLES: No ferry vehicles to park on stand at any time.  
DISPLAY: Tottenham Hale.

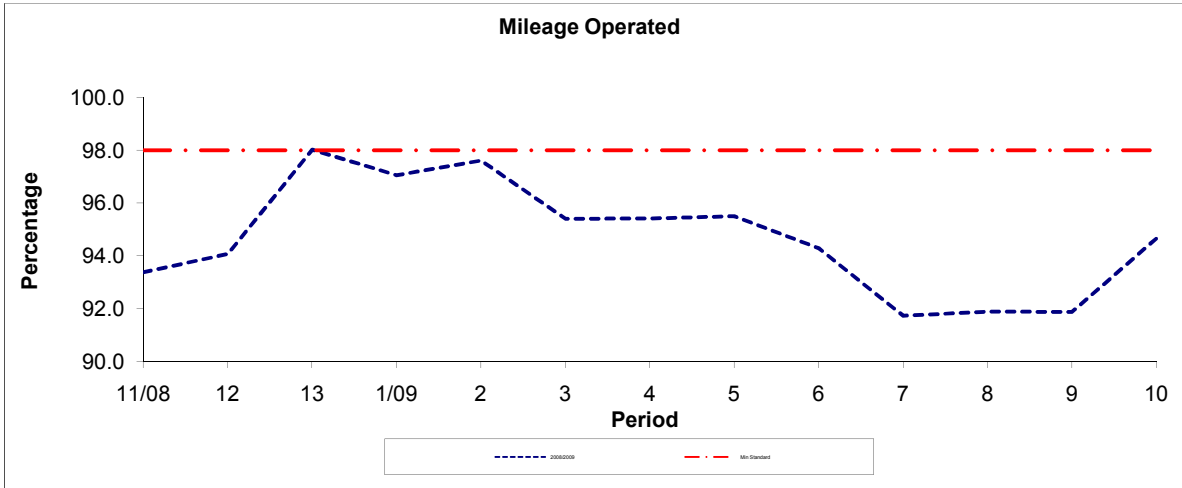
## **WALTHAMSTOW CENTRAL BUS STATION**

Private stand for 13 buses in marked bays on east side of Walthamstow Central Bus Station on north side of Selborne Road. Overflow offside stand for 1 bus on west side of bus station in lay-by opposite Stop A. Buses proceed from Walthamstow Central Bus Station direct to stand, departing to Walthamstow Central Bus Station. Set down in Walthamstow Central Bus Station, at Alighting Point and pick up in Walthamstow Central Bus Station, at Stop D.

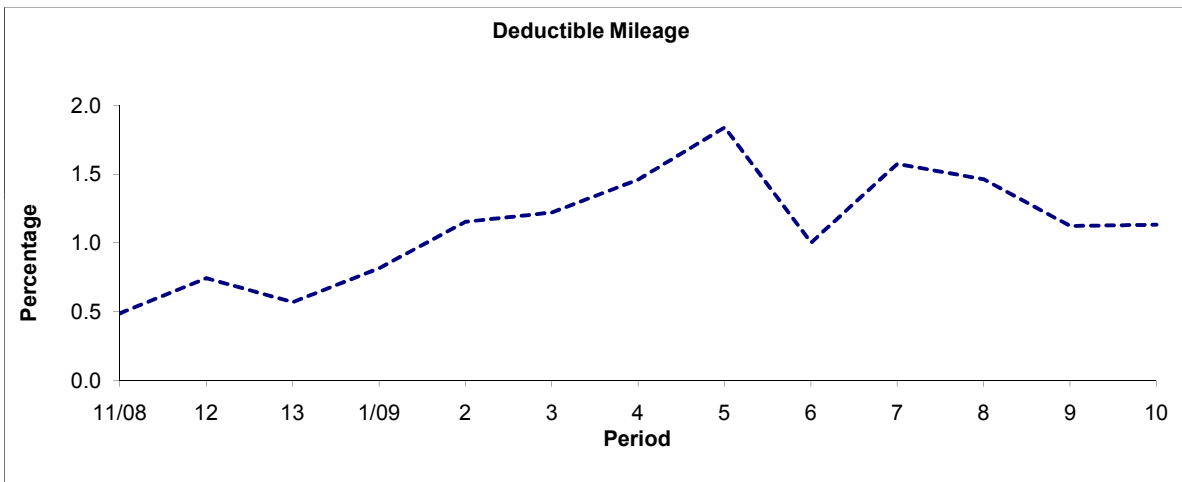
AVAILABILITY: At any time.  
OPERATING RESTRICTIONS: No more than 1 bus on Route N73 should be scheduled to stand at any one time.  
MEAL RELIEFS: No meal relief vehicles to stand at any time.  
FERRY VEHICLES: No ferry vehicles to park on stand at any time.  
DISPLAY: Walthamstow Central.  
OTHER INFORMATION: Toilet facilities available 24hours a day.

**PART B - PERFORMANCE STATISTICS**

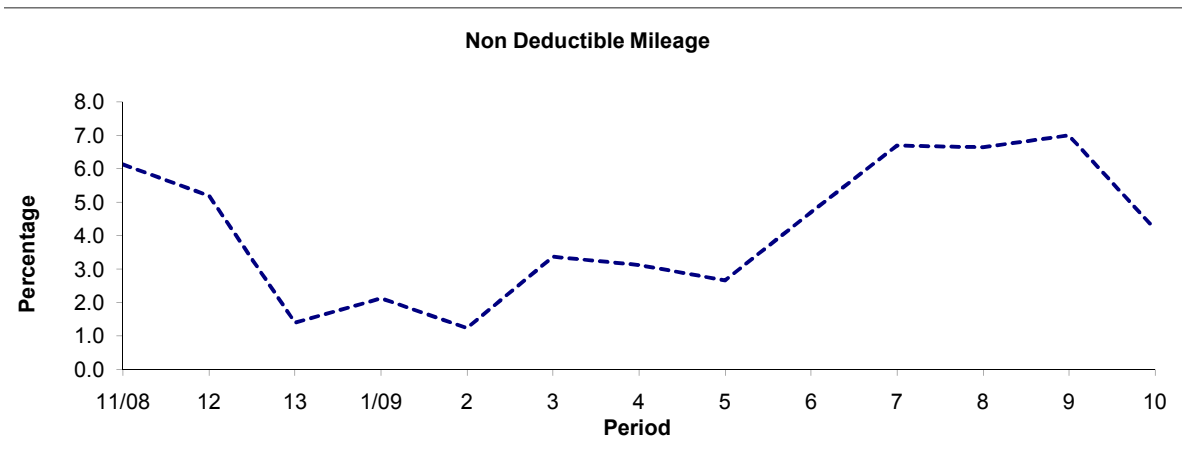
**Route 73**



Period	11/08	12	13	1/09	2	3	4	5	6	7	8	9	10
2008/2009	93.38	94.06	98.02	97.06	97.61	95.40	95.42	95.50	94.29	91.73	91.89	91.87	94.67
Min Standard	98.00	98.00	98.00	98.00	98.00	98.00	98.00	98.00	98.00	98.00	98.00	98.00	98.00



Period	11/08	12	13	1/09	2	3	4	5	6	7	8	9	10
2008/2009	0.49	0.74	0.57	0.81	1.15	1.22	1.46	1.84	1.00	1.58	1.46	1.12	1.13

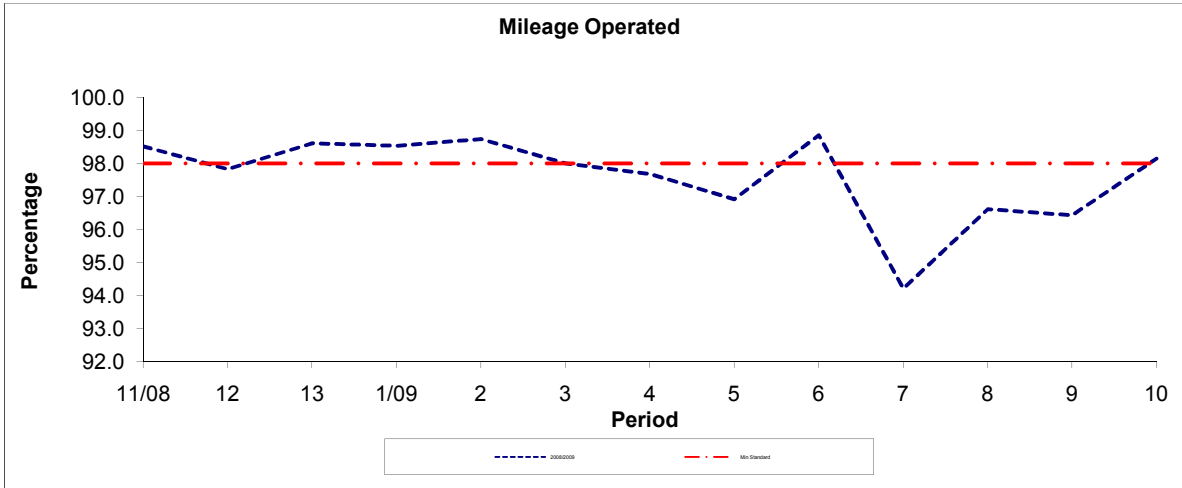


Period	11/08	12	13	1/09	2	3	4	5	6	7	8	9	10
2008/2009	6.13	5.19	1.41	2.13	1.24	3.38	3.12	2.66	4.71	6.70	6.65	7.00	4.20

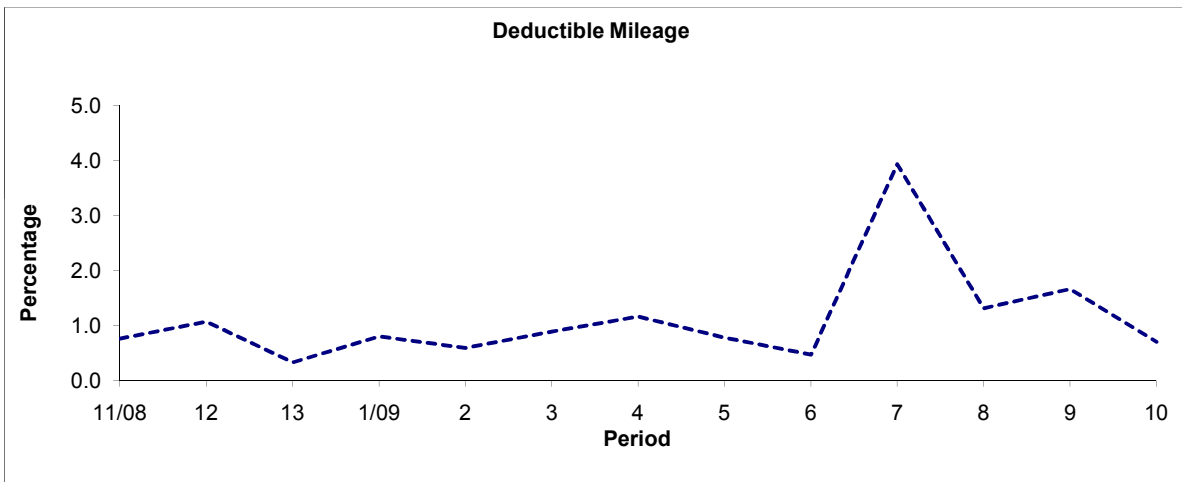
**Note :** Mileage is based on 4 weeks data

**PART B - PERFORMANCE STATISTICS**

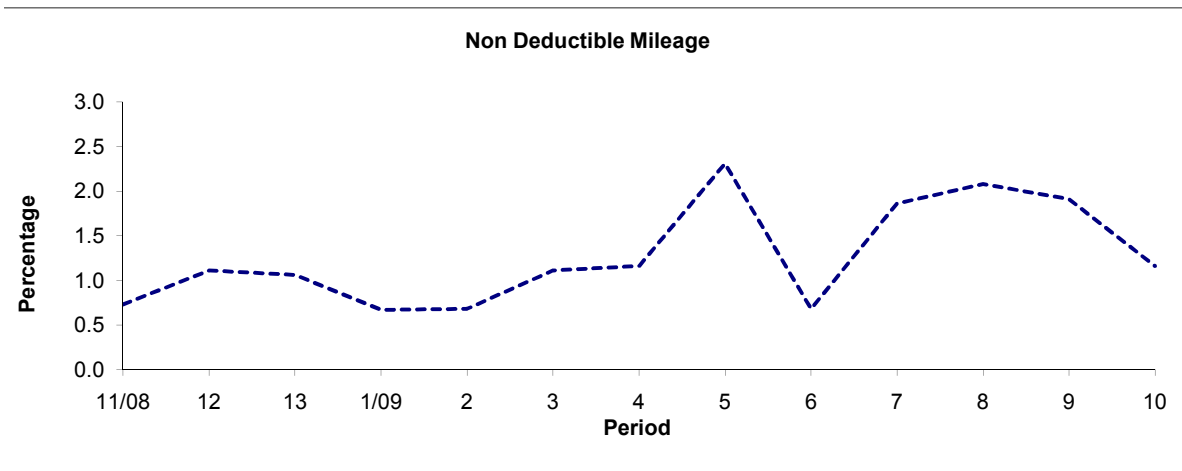
**Route N73**



Period	11/08	12	13	1/09	2	3	4	5	6	7	8	9	10
2008/2009	98.51	97.82	98.61	98.53	98.73	98.00	97.68	96.91	98.85	94.21	96.61	96.43	98.14
Min Standard	98.00	98.00	98.00	98.00	98.00	98.00	98.00	98.00	98.00	98.00	98.00	98.00	98.00



Period	11/08	12	13	1/09	2	3	4	5	6	7	8	9	10
2008/2009	0.76	1.07	0.33	0.80	0.59	0.89	1.16	0.78	0.47	3.93	1.31	1.66	0.70

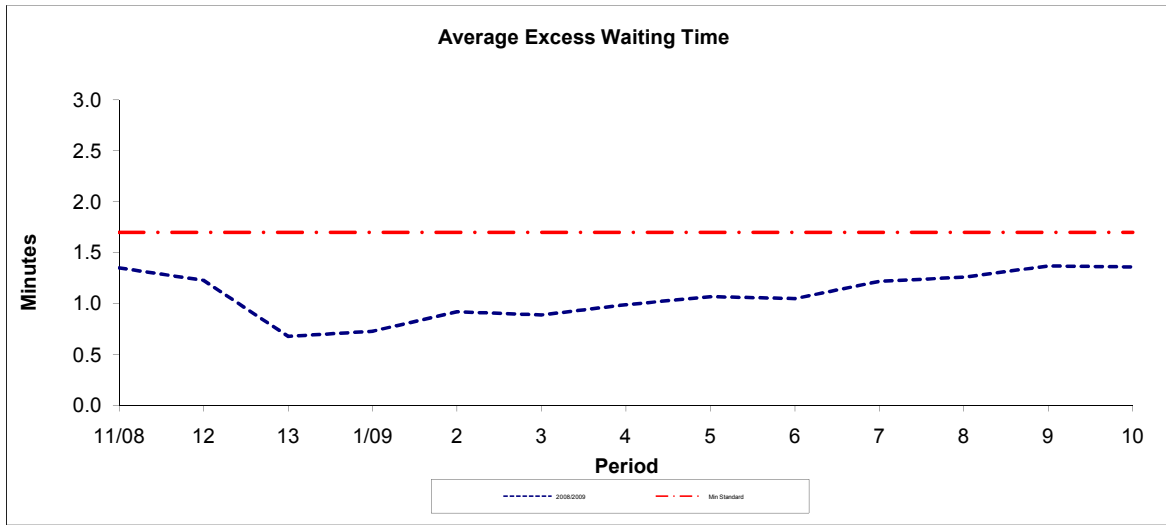


Period	11/08	12	13	1/09	2	3	4	5	6	7	8	9	10
2008/2009	0.73	1.11	1.06	0.67	0.68	1.11	1.16	2.31	0.68	1.86	2.08	1.91	1.16

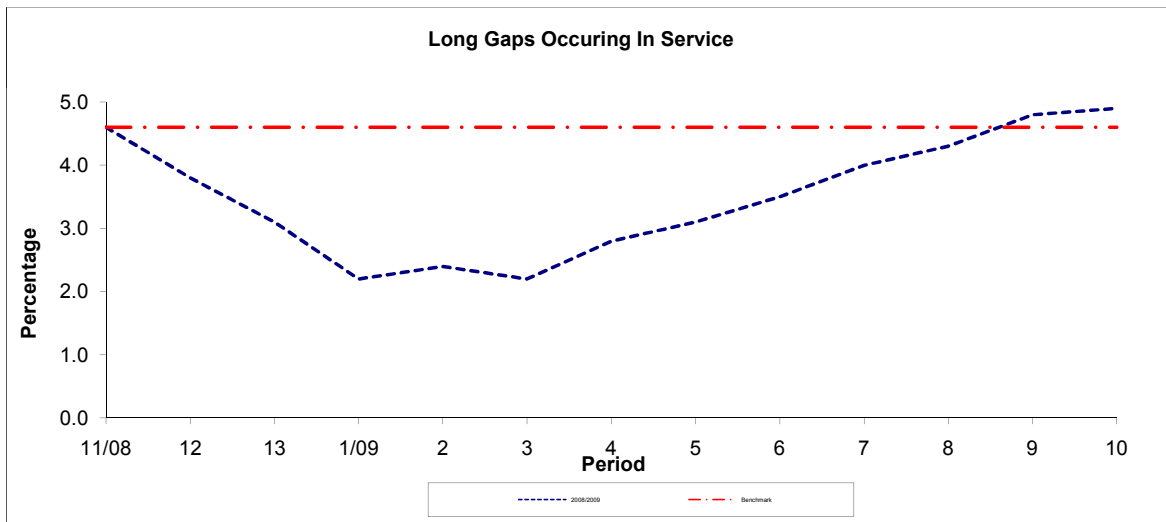
**Note :** Mileage is based on 4 weeks data

**PART B - PERFORMANCE STATISTICS**

**Route 73**



Period	11/08	12	13	1/09	2	3	4	5	6	7	8	9	10
2008/2009	1.35	1.23	0.68	0.73	0.92	0.89	0.99	1.07	1.05	1.22	1.26	1.37	1.36
Min Standard	1.70	1.70	1.70	1.70	1.70	1.70	1.70	1.70	1.70	1.70	1.70	1.70	1.70



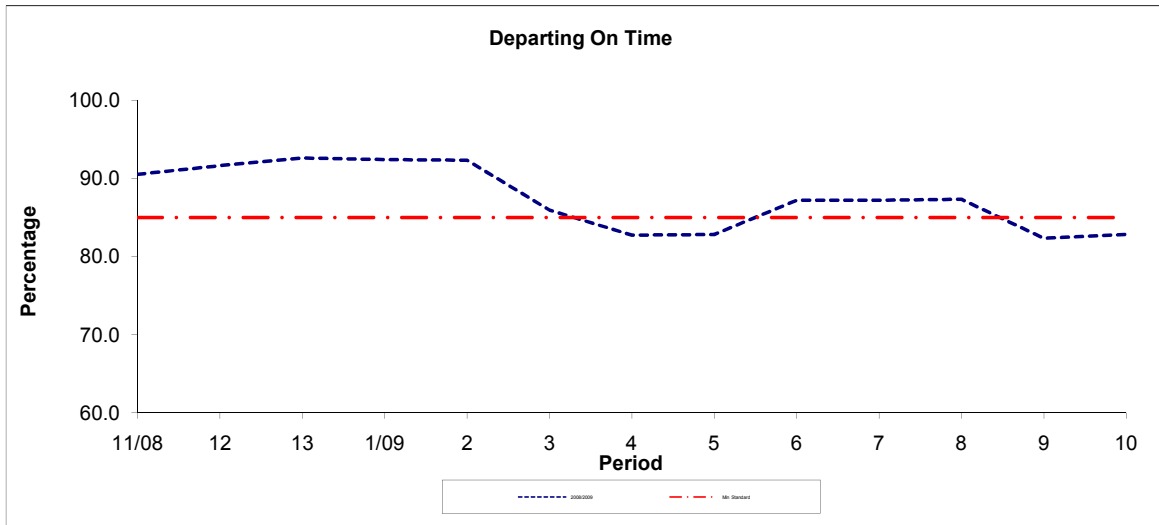
Period	11/08	12	13	1/09	2	3	4	5	6	7	8	9	10
2008/2009	4.60	3.80	3.10	2.20	2.40	2.20	2.80	3.10	3.50	4.00	4.30	4.80	4.90
Benchmark	4.60	4.60	4.60	4.60	4.60	4.60	4.60	4.60	4.60	4.60	4.60	4.60	4.60

**Note :** Reliability is based on 12 weeks rolling data

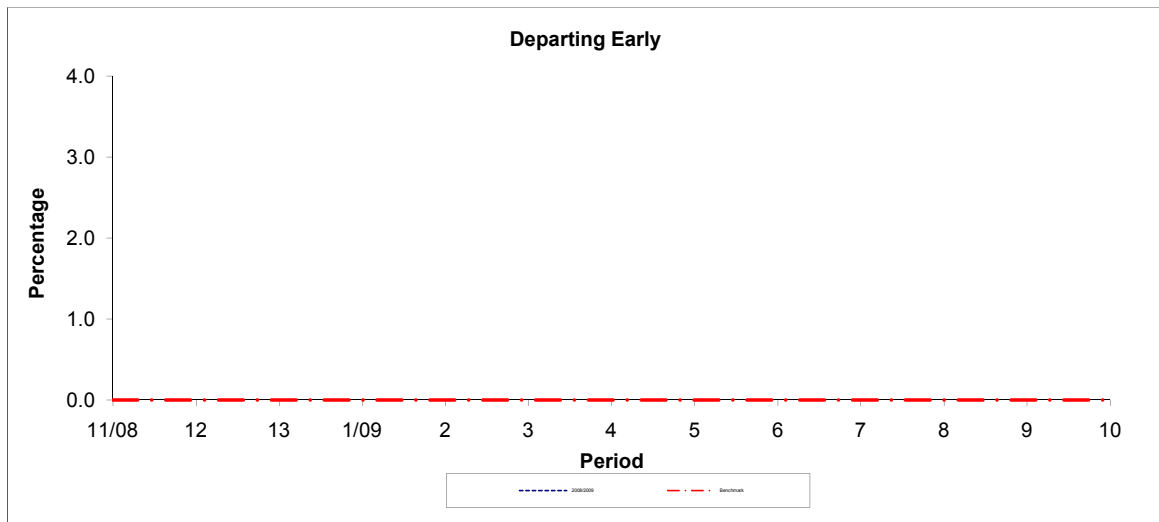


**PART B - PERFORMANCE STATISTICS**

**Route N73**



Period	11/08	12	13	1/09	2	3	4	5	6	7	8	9	10
2008/2009	90.50	91.60	92.60	92.40	92.30	85.90	82.70	82.80	87.20	87.20	87.30	82.30	82.80
Min Standard	85.00	85.00	85.00	85.00	85.00	85.00	85.00	85.00	85.00	85.00	85.00	85.00	85.00



Period	11/08	12	13	1/09	2	3	4	5	6	7	8	9	10
2008/2009													
Benchmark	0.00	0.00	0.00	0.00	0.00	0.00	0.00	0.00	0.00	0.00	0.00	0.00	0.00

**Note :** Reliability is based on 12 weeks rolling data