

## SECTION 2: PART A

### SERVICE SPECIFICATION FOR ROUTE Nos. 85 & N85

#### CONTENTS

	Page
1. Tenders Required	2
2. Proposed Changes	2
3. Terminals	3
4. Days of Operation	3
5. Vehicle Type	4
6. Frequencies	5
7. Minimum Performance Standards	16
8. Running Times	18
9. Layovers	18
10. Timing Constraints	18
11. Control Strategy	19
12. Operational Considerations	19
13. Stopping Arrangements	20
14. Timing Points and Mileages	21
15. Vehicle Livery	22
 <u>Appendices</u>	
A. Route Record	23
B. Sample Running Times for Route Nos. 85 & N85	30

---

This document should be read in conjunction with the Corporation's Guide for Tenderers (Part A: Explanatory Notes - Service Requirements). Where appropriate, reference is made to the relevant section.

## 1. TENDERS REQUIRED

This document describes the service for which the Corporation requires Tenders and Tenderers **must** submit a fully compliant bid. In addition, Tenderers **may** wish to draw upon their local knowledge to submit alternative bids which offer improved value for money in meeting passenger needs. These might incorporate, for example, different timings, frequencies, route structures and / or vehicles. The Corporation will welcome such bids and give them careful consideration.

For more information, please refer to Section 2.1 of Part A of the Guide for Tenderers.

## 2. PROPOSED CHANGES

At this time, no changes are proposed to the existing service for introduction prior to the commencement of the new Route Agreement for Route Nos. 85 & N85.

Tenderers should note that the following alterations (subject to consultation) are proposed as part of this Service Specification for introduction with the new Route Agreement:

Two routeing options are specified:

### Option 1:

- Route Nos. 85 & N85 will operate between Kingston, Kingston Hall Road and Putney Bridge Station. The route will now operate in service to and from Kingston, Kingston Hall Road. Ex Kingston, Kingston Hall Road Route Nos. 85 & N85 operates via Kingston Hall Road and Kingston High Street to rejoin current line of routeing at Eden Street. Ex Putney Bridge Station Route Nos. 85 & N85 operates via current line of routeing to Fairfield North and then operates via Wheatfield Way, Clarence Street and Eden Street to Kingston High Street.

### Option 2:

- Route Nos. 85 & N85 will operate between Surbiton, Seething Wells, Halls of Residence and Putney Bridge Station. The routes are extended from Kingston, Eden Street to Surbiton, Seething Wells, Halls of Residence. Ex Surbiton, Seething Wells, Halls of Residence Route Nos. 85 & N85 operates via Seething Wells Halls of Residence, Portsmouth Road, Brighton Road, Victoria Road, Claremont Road, Maple Road, Surbiton Road, Penryhn Road, Coll roundabout, Kingston Hall Road and Kingston High Street to rejoin current line of routeing at Kingston, Eden Street. Ex Putney Bridge Station, Route Nos. 85 & N85 operates via current line of routeing to Fairfield North and then operates via Wheatfield Way, Coll roundabout, Penrhyn Road, Surbiton Road, Maple Road, Claremont Road, Victoria Road, Brighton Road and Portsmouth Road to Surbiton, Seething Wells, Halls of Residence.
- Standing and stopping arrangements at Surbiton, Seething Wells, Halls of Residence are to be finalised. These will be confirmed with the successful Tenderer.

## 2. PROPOSED CHANGES CONTINUED

### Options 1 & 2:

- The designation Route No. N85 is used for contractual purposes only. This service will be marketed as Route No. 85. This includes all publicity, including destination blind displays.
- **Tenderers must identify the cost of the Nightly element of this service separately.**
- Boxing Day frequencies are specified at Sunday frequency levels but with a later start. **Tenderers must include the cost of the Boxing Day element of this service within Section 4.1 of their tender bid. Tenderers must also identify the cost of the Boxing Day element of this service separately.**

## 3. TERMINALS

Under Option 1, Route Nos. 85 & N85 would operate between Kingston, Kingston Hall Road and Putney Bridge Station.

Under Option 2, Route Nos. 85 & N85 would operate between Surbiton, Seething Wells, Halls of Residence and Putney Bridge Station.

Full details of the route to be followed, the permitted terminal workings and the available stands are shown at Appendix A. Tenderers should particularly note the information relating to the shared usage of stands, the taking of meal reliefs and the use of ferry vehicles.

## 4. DAYS OF OPERATION

One timetable must be offered for Route Nos. 85 & N85 which will operate as follows:

DAY OF OPERATION	Option 1	Option 2
Mondays to Fridays	Section 6.1	Section 6.1
Saturdays & Good Friday	Section 6.2	Section 6.2
Sundays	Section 6.3	Section 6.3
Christmas Day	No service	No service
Boxing Day	Section 6.4	Section 6.4
Other Public Holidays	Sunday service	Sunday service
Nightly	Section 6.5	Section 6.5
New Year's Eve night/New Year's Day morning*	Nightly service	Nightly service
Christmas Eve night/Christmas Day morning	No service	No service
Christmas Day night/Boxing Day morning	No service	No service

\* The New Year's Eve service level should be regarded as a minimum and any frequency increases and/or diversions will be discussed with the successful Tenderer on an annual basis.

## 5. VEHICLE TYPE

Please refer to Section 2.5 of Part A of the Guide for Tenderers.

Route Nos. 85 & N85 are currently approved for vehicles which are a maximum of 9.9 metres long and 2.55 metres wide. A formal route test will be required for vehicles which exceed these dimensions. This will be arranged with the successful Tenderer.

The service requirement set out in Section 6 assumes that dual door, double deck buses with a minimum capacity of 87 of which approximately 60 should be seated, will be used on this route. Luggage space should also be provided.

Tenderers must submit proposals based on new vehicles. These must be of a low floor design and be accessible to wheelchairs by means of a powered ramp.

Tenderers should refer to the vehicle design (including accessibility) features contained in Schedule II to Annex B of the Framework Agreement and Section 2 Part B of the Master ITT (Version 2 issued June 2005).

Tenderers may also submit bids based on using existing vehicles. Tenderers are asked to specify what refurbishment would be carried out on existing buses and the expected timescale of those works. See Master ITT (Version 2 issued June 2005).

## 6. FREQUENCIES

The level of service (e.g. every 15 minutes) required by the Corporation is described in terms of the interval between departures. Whilst a completely regular service at the specified frequency should be possible at most times, occasionally a bus may be timetabled to depart up to five minutes earlier or later than the regular time.

Tenderers should note that when the specified frequency changes (e.g. between the peak and midday periods), the scheduled interval between buses should never be greater than that provided by the lower of the two frequencies **AT ANY POINT ON THE ROUTE**.

Tenderers should note that unless otherwise stated **all** journeys should operate between the terminal points defined in each direction.

## Option 1

### 6.1 Mondays to Fridays

#### 1. Kingston, Kingston Hall Road to Putney Bridge Station

0430 - 0530	Every 15 minutes
0531 - 0700	Every 10 minutes
0701 - 0930	Every 7½ minutes
0931 - 1930	Every 8 minutes
1931 - 0020	Every 10 minutes
0021 - 0055	Every 15 minutes

First departure from Kingston, Kingston Hall Road no later than 0435.  
Last departure from Kingston, Kingston Hall Road no earlier than 0050.

Tenderers should ensure that buses are scheduled to be no more than 7½ minutes apart at Putney Heath, Green Man between 0730 and 0830 and between 1530 and 1630.

#### 2. Putney Bridge Station to Kingston, Kingston Hall Road

0510 - 0600	Every 15 minutes
0601 - 0645	Every 12 minutes
0646 - 0730	Every 10 minutes
0731 - 1000	Every 7½ minutes
1001 - 2030	Every 8 minutes
2031 - 0035	Every 10 minutes
0036 - 0125	Every 15 minutes

First departure from Putney Bridge Station no later than 0515.  
Last departure from Putney Bridge Station no earlier than 0120.

Tenderers should ensure that buses are scheduled to be no more than 7½ minutes apart at Norbiton Church between 0755 and 0855 and between 1545 and 1645.

## Option 2

### 6.1 Mondays to Fridays

#### 1. Surbiton, Seething Wells, Halls of Residence to Putney Bridge Station

0420 - 0520	Every 15 minutes
0521 - 0650	Every 10 minutes
0651 - 0920	Every 7½ minutes
0921 - 1920	Every 8 minutes
1921 - 0020	Every 10 minutes
0021 - 0045	Every 15 minutes

First departure from Surbiton, Seething Wells, Halls of Residence no later than 0425.

Last departure from Surbiton, Seething Wells, Halls of Residence no earlier than 0040.

Tenderers should ensure that buses are scheduled to be no more than 7½ minutes apart at Putney Heath, Green Man between 0730 and 0830 and between 1530 and 1630.

#### 2. Putney Bridge Station to Surbiton, Seething Wells, Halls of Residence

0510 - 0600	Every 15 minutes
0601 - 0645	Every 12 minutes
0646 - 0730	Every 10 minutes
0731 - 1000	Every 7½ minutes
1001 - 2030	Every 8 minutes
2031 - 0035	Every 10 minutes
0036 - 0125	Every 15 minutes

First departure from Putney Bridge Station no later than 0515.

Last departure from Putney Bridge Station no earlier than 0120.

Tenderers should ensure that buses are scheduled to be no more than 7½ minutes apart at Norbiton Church between 0755 and 0855 and between 1545 and 1645.

## Option 1

### 6.2 Saturdays & Good Friday

#### 1. Kingston, Kingston Hall Road to Putney Bridge Station

0430 - 0530	Every 15 minutes
0531 - 0755	Every 12 minutes
0756 - 0830	Every 10 minutes
0831 - 1810	Every 8 minutes
1811 - 0020	Every 10 minutes
0021 - 0055	Every 15 minutes

First departure from Kingston, Kingston Hall Road no later than 0435.  
Last departure from Kingston, Kingston Hall Road no earlier than 0050.

Tenderers should ensure that buses are scheduled to be no more than 8 minutes apart at Putney Heath, Green Man between 0930 and 1030.

#### 2. Putney Bridge Station to Kingston, Kingston Hall Road

0510 - 0600	Every 15 minutes
0601 - 0755	Every 12 minutes
0756 - 0830	Every 10 minutes
0831 - 1855	Every 8 minutes
1856 - 0035	Every 10 minutes
0036 - 0125	Every 15 minutes

First departure from Putney Bridge Station no later than 0515.  
Last departure from Putney Bridge Station no earlier than 0120.

Tenderers should ensure that buses are scheduled to be no more than 8 minutes apart at Norbiton Church between 0930 and 1030.



## Option 2

### 6.2 Saturdays & Good Friday

1. Surbiton, Seething Wells, Halls of Residence to Putney Bridge Station

0420 - 0520	Every 15 minutes
0521 - 0745	Every 12 minutes
0746 - 0820	Every 10 minutes
0821 - 1800	Every 8 minutes
1801 - 0020	Every 10 minutes
0021 - 0045	Every 15 minutes

First departure from Surbiton, Seething Wells, Halls of Residence no later than 0425.

Last departure from Surbiton, Seething Wells, Halls of Residence no earlier than 0040.

Tenderers should ensure that buses are scheduled to be no more than 8 minutes apart at Putney Heath, Green Man between 0930 and 1030.

2. Putney Bridge Station to Surbiton, Seething Wells, Halls of Residence

0510 - 0600	Every 15 minutes
0601 - 0755	Every 12 minutes
0756 - 0830	Every 10 minutes
0831 - 1855	Every 8 minutes
1856 - 0035	Every 10 minutes
0036 - 0125	Every 15 minutes

First departure from Putney Bridge Station no later than 0515.

Last departure from Putney Bridge Station no earlier than 0120.

Tenderers should ensure that buses are scheduled to be no more than 8 minutes apart at Norbiton Church between 0930 and 1030.

## Option 1

### 6.3 Sundays

1. Kingston, Kingston Hall Road to Putney Bridge Station

0430 - 0905	Every 15 minutes
0906 - 0020	Every 10 minutes
0021 - 0055	Every 15 minutes

First departure from Kingston, Kingston Hall Road no later than 0435.  
Last departure from Kingston, Kingston Hall Road no earlier than 0050.

Tenderers should ensure that buses are scheduled to be no more than 10 minutes apart at Putney Heath, Green Man between 1015 and 1115.

2. Putney Bridge Station to Kingston, Kingston Hall Road

0510 - 0845	Every 15 minutes
0846 - 0035	Every 10 minutes
0036 - 0125	Every 15 minutes

First departure from Putney Bridge Station no later than 0515.  
Last departure from Putney Bridge Station no earlier than 0120.

Tenderers should ensure that buses are scheduled to be no more than 10 minutes apart at Norbiton Church between 1030 and 1130.

## Option 2

### 6.3 Sundays

1. Surbiton, Seething Wells, Halls of Residence to Putney Bridge Station

0420 - 0855	Every 15 minutes
0856 - 0020	Every 10 minutes
0021 - 0045	Every 15 minutes

First departure from Surbiton, Seething Wells, Halls of Residence no later than 0425.

Last departure from Surbiton, Seething Wells, Halls of Residence no earlier than 0040.

Tenderers should ensure that buses are scheduled to be no more than 10 minutes apart at Putney Heath, Green Man between 1015 and 1115.

2. Putney Bridge Station to Surbiton, Seething Wells, Halls of Residence

0510 - 0845	Every 15 minutes
0846 - 0035	Every 10 minutes
0036 - 0125	Every 15 minutes

First departure from Putney Bridge Station no later than 0515.

Last departure from Putney Bridge Station no earlier than 0120.

Tenderers should ensure that buses are scheduled to be no more than 10 minutes apart at Norbiton Church between 1030 and 1130.

## Option 1

### 6.4 Boxing Day

1. Kingston, Kingston Hall Road to Putney Bridge Station

0750 - 0905	Every 15 minutes
0906 - 0020	Every 10 minutes
0021 - 0055	Every 15 minutes

First departure from Kingston, Kingston Hall Road no later than 0755.  
Last departure from Kingston, Kingston Hall Road no earlier than 0050.

Tenderers should ensure that buses are scheduled to be no more than 10 minutes apart at Putney Heath, Green Man between 1015 and 1115.

2. Putney Bridge Station to Kingston, Kingston Hall Road

0755 - 0845	Every 15 minutes
0846 - 0035	Every 10 minutes
0036 - 0125	Every 15 minutes

First departure from Putney Bridge Station no later than 0800.  
Last departure from Putney Bridge Station no earlier than 0120.

Tenderers should ensure that buses are scheduled to be no more than 10 minutes apart at Norbiton Church between 1030 and 1130.

**Tenderers must identify the cost of the Boxing Day element of this service separately.**

## Option 2

### 6.4 Boxing Day

1. Surbiton, Seething Wells, Halls of Residence to Putney Bridge Station

0750 - 0905	Every 15 minutes
0906 - 0020	Every 10 minutes
0021 - 0045	Every 15 minutes

First departure from Surbiton, Seething Wells, Halls of Residence no later than 0755.

Last departure from Surbiton, Seething Wells, Halls of Residence no earlier than 0040.

Tenderers should ensure that buses are scheduled to be no more than 10 minutes apart at Putney Heath, Green Man between 1015 and 1115.

2. Putney Bridge Station to Surbiton, Seething Wells, Halls of Residence

0755 - 0845	Every 15 minutes
0846 - 0035	Every 10 minutes
0036 - 0125	Every 15 minutes

First departure from Putney Bridge Station no later than 0800.

Last departure from Putney Bridge Station no earlier than 0120.

Tenderers should ensure that buses are scheduled to be no more than 10 minutes apart at Norbiton Church between 1030 and 1130.

**Tenderers must identify the cost of the Boxing Day element of this service separately.**

**Option 1**

**6.5 Nightly**

1. Kingston, Kingston Hall Road to Putney Bridge Station

0115 - 0425            Every 30 minutes

First departure from Kingston, Kingston Hall Road no later than 0120.  
Last departure from Kingston, Kingston Hall Road no earlier than 0420.

2. Putney Bridge Station to Kingston, Kingston Hall Road

0145 - 0455            Every 30 minutes

First departure from Putney Bridge Station no later than 0150.  
Last departure from Putney Bridge Station no earlier than 0450.

## Option 2

### 6.5 Nightly

1. Surbiton, Seething Wells, Halls of Residence to Putney Bridge Station

0105 - 0415            Every 30 minutes

First departure from Surbiton, Seething Wells, Halls of Residence no later than 0110.

Last departure from Surbiton, Seething Wells, Halls of Residence no earlier than 0410.

2. Putney Bridge Station to Surbiton, Seething Wells, Halls of Residence

0145 - 0455            Every 30 minutes

First departure from Putney Bridge Station no later than 0150.

Last departure from Putney Bridge Station no earlier than 0450.

## 7. MINIMUM PERFORMANCE STANDARDS

Please refer to Section 2.7 of Part A of the Guide for Tenderers.

Tenderers should note that the objective of the Operator of Route Nos. 85 & N85 shall be to operate all scheduled mileage and adhere **fully** to the published timetable. The Operator must use its best endeavours to achieve this.

### Option 1

The **minimum** standards of acceptable performance for Route No. 85 (**Option 1**) shall be:

Average Excess Wait Time:	No more than 0.90 minutes
Minimum Operated Mileage:	No less than 98.00%

The **minimum** standards of acceptable performance for Route No. 85 (**Option 2**) shall be:

Average Excess Wait Time:	No more than 1.10 minutes
Minimum Operated Mileage:	No less than 98.00%

The **minimum** standards of acceptable performance for Route No. N85 (**Option 1 & 2**) shall be:

Departing on Time	No less than 85.00%
Minimum Operated Mileage	No less than 99.00%

or as notified by the Corporation from time to time. The Operator will be required to achieve or better the standards.

It is unlikely that the minimum number of QSI surveys for performance measurement will be conducted on Route No. N85 at present. However, this may change at a later date.

### QSI Thresholds

The QSI threshold is the standard of performance to be achieved by the operator in order to qualify for an automatic contract extension (in accordance with Schedule IX of the Framework Agreement).

Average Excess Wait Time Threshold (**Option 1**) = 0.80 minutes  
Average Excess Wait Time Threshold (**Option 2**) = 0.95 minutes

It is unlikely that the minimum number of QSI surveys for Threshold measurement will be conducted on Route No. N85 at present. However, this may change at a later date when a Threshold figure may be published.



### Summary of proposed QSI coverage: Route Nos. 85 & N85

Note: While London Buses undertakes to carry out QSI surveys at the times and locations specified below, it may prove impossible to rearrange a survey cancelled or nullified at short notice.

#### Survey locations (Option 1)

##### Towards Putney Bridge Station

Kingston  
Roehampton Vale ASDA \$

##### Towards Kingston, Kingston Hall Road

Putney Bridge  
Roehampton Vale ASDA \$

\$ Both directions observed simultaneously at this point. Counted as two surveys.

Total scheduled manual QSI surveys per quarter = 64.

#### Survey locations (Option 2)

##### Towards Putney Bridge Station

Surbiton  
Kingston  
Roehampton Vale ASDA \$

##### Towards Kingston, Kingston Hall Road

Putney Bridge  
Roehampton Vale ASDA \$  
Kingston

\$ Both directions observed simultaneously at this point. Counted as two surveys.

Total scheduled manual QSI surveys per quarter = 96.

## 8. RUNNING TIMES

Extracts from the public timetable with sample running times for Route Nos. 85 & N85 are attached at Appendix B. This gives an indication of the time required to travel the route. Attention is drawn to the variations in running times at different times of the day. Please refer to Section 2.8 of Part A of the Guide for Tenderers for further information.

Tenderers should carefully check the existing running times to ensure that they are appropriate in present traffic conditions.

For Option 1, Tenderers should devise their own running times for the section of Route Nos. 85 & N85 between Kingston, Eden Street and Kingston, Kingston Hall Road.

For Option 2, Tenderers should devise their own running times for the section of Route Nos. 85 & N85 between Kingston, Fairfield North and Surbiton, Seething Wells, Halls of Residence.

When reviewing existing, and devising new, running times Tenderers should refer to:

- the minimum performance standards for Route Nos. 85 & N85 in Section 7 above;
- the historical performance data provided in Section 1 Part B of the introduction to this ITT;
- the paragraph in Section 12 referring to the proposed extension of the Cashless Boarding zone throughout the whole of the London area.

Tenderers may consider if school summer holiday schedules, incorporating running time reductions, are desirable for this route. In this event, schedules and costs must be submitted separately.

## 9. LAYOVERS

Under normal circumstances, layover time on stands and at bus stations should be restricted to that required to provide a reliable service. Longer layovers for any other purpose may only be taken with the permission of the Corporation.

## 10. TIMING CONSTRAINTS

Route No. 85 should interwork with Route No. N85 to form a seamless 24 hour service.

Route Nos. 85 & N85 should interwork with other routes where possible.

Tenderers submitting bids should bear this requirement in mind when compiling schedules. This requirement will be negotiated with the successful Tenderer for this route to ensure that optimal interworking/separation is delivered within its schedules.

## 11. CONTROL STRATEGY

Route Nos. 85 & N85 can suffer from the effects of traffic congestion, making some form of route control essential in order to achieve or better the minimum performance standards for this route.

Tenderers should submit proposals on the control strategy they intend to adopt and the type of control they would intend to use by completing the form provided in Section 3: Part 7 of this ITT. The cost of this control should be included within the main Tender price.

Tenderers should also indicate how they intend to facilitate driver changeovers and meal reliefs for this route.

Further information is provided in Section 2.11 of Part A of the Guide for Tenderers.

## 12. OPERATIONAL CONSIDERATIONS

Tenderers should note the following operating considerations affecting Route Nos. 85 & N85:

- Route Nos. 85 & N85 can be subject to traffic delays in the Kingston and Putney areas.

Tenderers should also note the following factors/events which may have an impact on Route Nos. 85 & N85 in the foreseeable future:

- It is anticipated that Cashless Boarding will be extended throughout London at some stage during the lifetime of this contract. **This is expected to lead to significant savings in running and recovery times to bus routes, and, therefore, potential resource (cycle time and PVR) savings are expected. Tenderers are required to identify and submit the level of savings per vehicle that could be achieved by reducing peak vehicle requirement, and/or how reliability targets could be revised when the Scheme is introduced.**

The above factors have been included to assist Tenderers and represents the information currently available to the Corporation. Tenderers should make their own enquiries about events which may impact upon the route and should form their own views about their likely effect upon it.

### 13. STOPPING ARRANGEMENTS

Buses operating on Route Nos. 85 & N85 must serve all stops on the line of route designated for the route. There are two types of bus stop:

- Compulsory (white stop flag): where all buses must stop.
- Request (red stop flag): where buses are only required to stop if a passenger rings the bell or an intending passenger signals to the driver.

On all night routes (with N prefix) and on 24 hour routes (between the hours of 0100 and 0430) all bus stops are regarded as request stops regardless of their type.

Tenderers should note that there are proposals (subject to consultation) to remove the distinction between compulsory and request stops. If approved, the successful Tenderer will be advised of these changes in detail.

## 14. TIMING POINTS & MILEAGES

### Timing Points

#### Route Nos. 85 & N85 (Option 1)

**Kingston** *Kingston Hall Road*  
*Kingston Eden Street*  
 Norbiton Church  
 Roehampton Vale *Asda*  
 Roehampton *Alton Road/Bessborough Road*  
 Roehampton *Earl Spencer*  
 Putney Heath *Green Man*  
 Putney Station  
**Putney Bridge Station**

**Putney Bridge Station**  
 Putney Station  
 Putney Heath *Green Man*  
 Roehampton *Earl Spencer*  
 Roehampton Vale *Asda*  
 Norbiton Church  
 Kingston *Fairfield Bus Station*  
**Kingston High Street**

#### Route Nos. 85 & N85 (Option 2)

**Surbiton** *Seething Wells*  
 Surbiton Station *Claremont Road*  
 Kingston *Kingston Hall Road*  
 Norbiton Church  
 Roehampton Vale *Asda*  
 Roehampton *Alton Road/Bessborough Road*  
 Roehampton *Earl Spencer*  
 Putney Heath *Green Man*  
 Putney Station  
**Putney Bridge Station**

**Putney Bridge Station**  
 Putney Station  
 Putney Heath *Green Man*  
 Roehampton *Earl Spencer*  
 Roehampton Vale *Asda*  
 Norbiton Church  
 Kingston *Fairfield Bus Station*  
 Surbiton Station *Claremont Road*  
**Surbiton Seething Wells**

### Mileages for Route Nos. 85 & N85

#### Option 1

Kingston, Kingston Hall Road to Putney Bridge Station	7.4 miles
Putney Bridge Station to Kingston, Kingston Hall Road	6.9 miles

#### Option 2

Surbiton, Seething Wells, Halls of Residence to Putney Bridge Station	9.1 miles
Putney Bridge Station to Surbiton, Seething Wells, Halls of Residence	8.5 miles

Tenderers should note that:

- these measurements are believed to be accurate to within 0.5 miles, but no warranty or representation as to accuracy is given;
- out of service stand workings have not been measured and are not included within the above measurements;
- if alternative or additional measurements are used by the Tenderer, these must be stated in the tender submission;
- point to point measurements pertaining to recognised curtailment points or alternative terminals will be agreed with the successful Tenderer once the contract has been awarded.

## 15. VEHICLE LIVERY

All vehicles to be used on Route Nos. 85 & N85 from the commencement of the new Route Agreement must be in a livery that is exclusively Corporation red. The paint should be matched accurately to the colour as defined by the following manufacturer's specifications:

ICI London Bus Red P498 FPF 3

Other manufacturers should also be able to produce this specification from the ICI colour chart.

This requirement does not include the lower panels which may be in a different colour but which shall not exceed 50cm in height, or the rooftop which should be painted white so as to reduce temperatures inside the vehicle during the summer months.

The positioning and size of Operators' logos are to be agreed between the Operator and the Corporation and, where possible, these should be above the front doors on the nearside of the vehicles and above the drivers' offside cab windows.

All livery proposals must be submitted to the Contracts Tendering Manager for approval.

## APPENDIX A: ROUTE RECORD

### OPTION 1: ROUTE Nos. 85 & N85: KINGSTON, KINGSTON HALL ROAD - PUTNEY BRIDGE STATION

#### **STREETS TRAVERSED**

**Towards Putney Bridge Station:** Kingston Hall Road, Kingston High Street, Eden Street, Clarence Street, Cromwell Road, Queen Elizabeth Road, London Road, Kingston Hill, Kingston Vale, Roehampton Vale, Stag Lane, Stag Lane Underpass, Asda Roundabout, Stag Lane Underpass, Stag Lane, Roehampton Vale, Kingston Road, Alton Road, Roehampton Lane, Medfield Street, Treville Street, Roehampton High Street, Putney Heath, Wildcroft Road, Putney Hill, Putney High Street, Putney Bridge, Putney Bridge Approach, Gonville Street.

**Towards Kingston, Kingston Hall Road:** Station Approach, Ranelagh Gardens, Fulham High Street, Gonville Street, Putney Bridge Approach, Putney Bridge, Putney High Street, Putney Hill, Putney Heath, Slip Road, Medfield Street, Roehampton Lane, Kingston Road, Roehampton Vale, Stag Lane, Asda Roundabout, Stag Lane, Roehampton Vale, Kingston Vale, Kingston Hill, London Road, Fairfield North, Wheatfield Way, Clarence Street, Eden Street, Kingston High Street.

#### **STANDS, TURNING POINTS AND DESTINATION BLINDS**

Tenderers should note that under normal circumstances, the specific restrictions relating to each stand will apply to the whole stand at all times. Any variation to such standing arrangements must be agreed by the Corporation. In addition, Tenderers should note the following general requirements:

- 1) Drivers MUST switch off engines during layover periods at bus stations or on stands.
- 2) No meal reliefs may be taken on any stand (on or off line of route) without the permission of the Corporation.
- 3) No crew ferry vehicles may enter any stand (on or off line of route) without the permission of the Corporation.
- 4) Destination blind displays to be used are shown under each stand description. Tenderers may suggest, within their bids, alternative blind displays.
- 5) The intermediate (also known as via) blind display to be used on the nearside of the vehicle is shown in the box below:

85 via Roehampton
-------------------

For further information, please refer to Annex C of the Framework Agreement: General Conditions relating to the use of London Buses' Bus Stations and Stands.

### **KINGSTON, KINGSTON HALL ROAD**

Public stand for two buses on north side of Kingston Hall Road.

Buses proceed from Kingston High Street via Kingston Hall Road to stand, departing via Kingston Hall Road and Wheatfield Way (circumnavigate roundabout) to Kingston Hall Road. Set down in Kingston High Street, at stop J and pick up in Kingston Hall Road, at stop UK.

AVAILABILITY:	At any time.
OPERATING RESTRICTIONS:	No more than <b>2</b> vehicles on Route Nos. 85 & N85 should be scheduled to stand at any one time.
MEAL RELIEFS:	No meal relief vehicles to stand at any time.
FERRY VEHICLES:	No ferry vehicles to park on stand at any time.
OTHER INFORMATION:	Council toilet facilities available between 0745 and 1800 Mon- Sat and between 1000 and 2400 on Sunday.
BLIND DISPLAY:	Kingston

### **LONDON ROAD, KINGSTON (from Putney Bridge Station)**

Public stand on north side of London Road, commencing 57 metres east of the junction with Queen Elizabeth Road, outside Tiffin School.

Buses proceed from London Road via Birkenhead Avenue, Queen Elizabeth Road and London Road to stand, departing to London Road. Set down and pick up in London Road, at stop C1.

AVAILABILITY:	At any time.
OPERATING RESTRICTIONS:	To be used for unscheduled curtailments only.
MEAL RELIEFS:	No meal relief vehicles to stand at any time.
FERRY VEHICLES:	No ferry vehicles to park on stand at any time.
BLIND DISPLAY:	Norbiton Church

### **ROEHAMPTON VALE, ASDA (EAST SIDE) (from Kingston, Kingston Hall Road)**

Public stand at bus stop in the layby at southern end of Stag Lane underpass adjacent to the Asda store.

Buses proceed from Stag Lane underpass via Asda roundabout and Stag Lane underpass to stand, departing via Stag Lane underpass to Roehampton Vale. Set down in Stag Lane underpass, at stop PB and pick up in Roehampton Vale.

AVAILABILITY:	At any time.
OPERATING RESTRICTIONS:	To be used for unscheduled curtailments only.
MEAL RELIEFS:	No meal relief vehicles to stand at any time.
FERRY VEHICLES:	No ferry vehicles to park on stand at any time.
BLIND DISPLAY:	Roehampton Vale



### **ROEHAMPTON VALE, ASDA (WEST SIDE) (from Putney Bridge Station)**

Public stand in bay on west side of Stag Lane underpass, north of Asda roundabout. Buses proceed from Stag Lane via Asda roundabout and Stag Lane underpass to stand, departing to Stag Lane underpass. Set down in Stag Lane, at stop PC and pick up in Stag Lane underpass, at stop PB.

AVAILABILITY: At any time.  
OPERATING RESTRICTIONS: To be used for unscheduled curtailments only.  
MEAL RELIEFS: No meal relief vehicles to stand at any time.  
FERRY VEHICLES: No ferry vehicles to park on stand at any time.  
BLIND DISPLAY: Roehampton Vale

### **PUTNEY HEATH, GREEN MAN**

Private stand on south side of bus turning area on south east side of Wildcroft Road, opposite the Green Man public house.

#### From Kingston, Kingston Hall Road

Buses proceed from Putney Heath via Bus Standing Area to stand, departing via Bus Standing Area to Putney Heath. Set down in Putney Heath, at stop PT and pick up in Putney Heath, at stop PU.

#### From Putney Bridge Station

Buses proceed from Putney Heath via Bus Standing Area to stand, departing via Bus standing area and Putney Heath to Putney Hill. Set down in Putney Heath, at stop PU and pick up in Putney Hill, at stop PH.

AVAILABILITY: At any time.  
OPERATING RESTRICTIONS: To be used for unscheduled curtailments only.  
MEAL RELIEFS: No meal relief vehicles to stand at any time.  
FERRY VEHICLES: No ferry vehicles to park on stand at any time.  
BLIND DISPLAY: Putney Heath

### **PUTNEY BRIDGE STATION**

Private stand on north side of Station Approach. Buses proceed from Gonville Street via Station Approach to stand, departing to Station Approach. Set down in Gonville Street, at alighting point and pick up in Station Approach, at stop FC.

AVAILABILITY: At any time.  
OPERATING RESTRICTIONS: No more than 2 vehicles on Route Nos. 85 & N85 should be scheduled to stand at any one time.  
MEAL RELIEFS: No meal relief vehicles to stand at any time.  
FERRY VEHICLES: No ferry vehicles to park on stand at any time.  
OTHER INFORMATION: LUL toilet facilities available 0530-2400 daily.  
BLIND DISPLAY: Putney Bridge

## **OPTION 2:ROUTE 85 & N85: SURBITON, SEETHING WELLS, HALLS OF RESIDENCE - PUTNEY BRIDGE STATION**

### **STREETS TRAVERSED**

**Towards Putney Bridge Station:** Portsmouth Road, Brighton Road, Victoria Road, Claremont Road, Maple Road, Surbiton Road, Penrhyn Road, Coll roundabout, Kingston Hall Road, Kingston High Street, Eden Street, Clarence Street, Cromwell Road, Queen Elizabeth Road, London Road, Kingston Hill, Kingston Vale, Roehampton Vale, Stag Lane, Stag Lane Underpass, Asda roundabout, Stag Lane Underpass, Stag Lane, Roehampton Vale, Kingston Road, Alton Road, Roehampton Lane, Medfield Street, Treville Street, Roehampton High Street, Putney Heath, Wildcroft Road, Putney Hill, Putney High Street, Putney Bridge, Putney Bridge Approach, Gonville Street.

**Towards Surbiton, Seething Wells, Halls of Residence:** Station Approach, Ranelagh Gardens, Fulham High Street, Gonville Street, Putney Bridge Approach, Putney Bridge, Putney High Street, Putney Hill, Putney Heath, Slip Road, Medfield Street, Roehampton Lane, Kingston Road, Roehampton Vale, Stag Lane, Asda roundabout, Stag Lane, Roehampton Vale, Kingston Vale, Kingston Hill, London Road, Fairfield North, Wheatfield Way, Coll roundabout, Penrhyn Road, Surbiton Road, Maple Road, Claremont Road, Victoria Road, Brighton Road, Portsmouth Road.

### **STANDS, TURNING POINTS AND DESTINATION BLINDS**

Tenderers should note that under normal circumstances, the specific restrictions relating to each stand will apply to the whole stand at all times. Any variation to such standing arrangements must be agreed by the Corporation. In addition, Tenderers should note the following general requirements:

- 1) Drivers MUST switch off engines during layover periods at bus stations or on stands.
- 2) No meal reliefs may be taken on any stand (on or off line of route) without the permission of the Corporation.
- 3) No crew ferry vehicles may enter any stand (on or off line of route) without the permission of the Corporation.
- 4) Destination blind displays to be used are shown under each stand description. Tenderers may suggest, within their bids, alternative blind displays.
- 5) The intermediate (also known as via) blind display to be used on the nearside of the vehicle is shown in the box below:

85 via Roehampton
-------------------

For further information, please refer to Annex C of the Framework Agreement: General Conditions relating to the use of London Buses' Bus Stations and Stands.

### **SURBITON, SEETHING WELLS, HALLS OF RESIDENCE**

**Stand and manoeuvres to be finalised. Tenderers should assume the following:**

#### **Proposed stand for 2 double deck vehicles, in university grounds**

Buses proceed from Portsmouth Road via Seething Wells, Halls of Residence forecourt to stand, departing via Seething Wells, Halls of Residence forecourt to Portsmouth Road. Set down and pick up in Portsmouth Road.

Tenderers should further assume that the following stand restrictions will apply:

AVAILABILITY:	At any time.
OPERATING RESTRICTIONS:	No more than <b>2</b> vehicles on Route Nos. 85 & N85 should be scheduled to stand at any one time.
MEAL RELIEFS:	No meal relief vehicles to stand at any time.
FERRY VEHICLES:	No ferry vehicles to park on stand at any time.
OTHER INFORMATION:	Toilet facilities to be confirmed.
BLIND DISPLAY:	Surbiton, Seething Wells

### **SURBITON, ST ANDREWS SQUARE (from Surbiton, Seething Wells, Halls of Residence)**

Public stand along Maple Road, prior to the south arm of St Andrew's Square. Buses proceed from Victoria Road via Claremont Road (circumnavigate roundabout at junction), Victoria Road, Brighton Road and Maple Road to stand, departing via Maple Road to Claremont Road. Set down in Victoria Road, at stop NB and pick up in Claremont Road, at stop NH.

AVAILABILITY:	At any time.
OPERATING RESTRICTIONS:	To be used for unscheduled curtailments only.
MEAL RELIEFS:	No meal relief vehicles to stand at any time.
FERRY VEHICLES:	No ferry vehicles to park on stand at any time.
BLIND DISPLAY:	Surbiton

### **SURBITON, MAPLE ROAD (from Putney Bridge Station)**

Stand on Maple Road, along the side of St Andrew's Church. Buses proceed from Victoria Road via St Andrew's Road and Maple Road to stand, departing via Maple Road and Brighton Road to Victoria Road. Set down in Victoria Road, at stop NP and pick up in Victoria Road, at stop NA.

AVAILABILITY:	At any time.
OPERATING RESTRICTIONS:	To be used for unscheduled curtailments only.
MEAL RELIEFS:	No meal relief vehicles to stand at any time.
FERRY VEHICLES:	No ferry vehicles to park on stand at any time.
BLIND DISPLAY:	Surbiton

**KINGSTON, KINGSTON HALL ROAD (from Putney Bridge Station)**

Public stand for two buses on north side of Kingston Hall Road.

Buses proceed from Fairfield North via Wheatfield Way, Kingston Hall Road (circumnavigate roundabout) to Kingston Hall Road to stand, departing to Kingston Hall Road (circumnavigate roundabout) to Kingston Hall Road. Set down at Fairfield North and pick up in Kingston Hall Road, at stop UK.

AVAILABILITY: At any time.  
OPERATING RESTRICTIONS: To be used for unscheduled curtailments.  
MEAL RELIEFS: No meal relief vehicles to stand at any time.  
FERRY VEHICLES: No ferry vehicles to park on stand at any time.  
BLIND DISPLAY: Kingston

**LONDON ROAD, KINGSTON (from Putney Bridge Station)**

Public stand on north side of London Road, commencing 57 metres east of the junction with Queen Elizabeth Road, outside Tiffin School.

Buses proceed from London Road via Birkenhead Avenue, Queen Elizabeth Road and London Road to stand, departing to London Road. Set down and pick up in London Road, at stop C1.

AVAILABILITY: At any time.  
OPERATING RESTRICTIONS: To be used for unscheduled curtailments only.  
MEAL RELIEFS: No meal relief vehicles to stand at any time.  
FERRY VEHICLES: No ferry vehicles to park on stand at any time.  
BLIND DISPLAY: Norbiton Church

**ROEHAMPTON VALE, ASDA (EAST SIDE) (from Surbiton, Seething Wells, Halls of Residence)**

Public stand at bus stop in the layby at southern end of Stag Lane Underpass adjacent to the Asda store.

Buses proceed from Stag Lane Underpass via Asda roundabout and Stag Lane Underpass to stand, departing via Stag Lane Underpass to Roehampton Vale. Set down in Stag Lane Underpass, at stop PB and pick up in Roehampton Vale.

AVAILABILITY: At any time.  
OPERATING RESTRICTIONS: To be used for unscheduled curtailments only.  
MEAL RELIEFS: No meal relief vehicles to stand at any time.  
FERRY VEHICLES: No ferry vehicles to park on stand at any time.  
BLIND DISPLAY: Roehampton Vale

### **ROEHAMPTON VALE, ASDA (WEST SIDE) (from Putney Bridge Station)**

Public stand in bay on west side of Stag Lane Underpass, north of Asda roundabout. Buses proceed from Stag Lane via Asda roundabout and Stag Lane Underpass to stand, departing to Stag Lane Underpass. Set down in Stag Lane, at stop PC and pick up in Stag Lane Underpass, at stop PB.

AVAILABILITY: At any time.  
OPERATING RESTRICTIONS: To be used for unscheduled curtailments only.  
MEAL RELIEFS: No meal relief vehicles to stand at any time.  
FERRY VEHICLES: No ferry vehicles to park on stand at any time.  
BLIND DISPLAY: Roehampton Vale

### **PUTNEY HEATH, GREEN MAN**

Private stand on south side of bus turning area on south east side of Wildcroft Road, opposite the Green Man public house.

#### From Surbiton, Seething Wells, Halls of Residence

Buses proceed from Putney Heath via Bus Standing Area to stand, departing via Bus Standing Area to Putney Heath. Set down in Putney Heath, at stop PT and pick up in Putney Heath, at stop PU.

#### From Putney Bridge Station

Buses proceed from Putney Heath via Bus Standing Area to stand, departing via Bus Standing Area and Putney Heath to Putney Hill. Set down in Putney Heath, at stop PU and pick up in Putney Hill, at stop PH.

AVAILABILITY: At any time.  
OPERATING RESTRICTIONS: To be used for unscheduled curtailments only.  
MEAL RELIEFS: No meal relief vehicles to stand at any time.  
FERRY VEHICLES: No ferry vehicles to park on stand at any time.  
BLIND DISPLAY: Putney Heath

### **PUTNEY BRIDGE STATION**

Private stand on north side of Station Approach. Buses proceed from Gonville Street via Station Approach to stand, departing to Station Approach. Set down in Gonville Street, at alighting point and pick up in Station Approach, at stop FC.

AVAILABILITY: At any time.  
OPERATING RESTRICTIONS: No more than 2 vehicles on Route Nos. 85 & N85 should be scheduled to stand at any one time.  
MEAL RELIEFS: No meal relief vehicles to stand at any time.  
FERRY VEHICLES: No ferry vehicles to park on stand at any time.  
OTHER INFORMATION: LUL toilet facilities available 0530-2400 daily.  
BLIND DISPLAY: Putney Bridge

**APPENDIX B: SAMPLE RUNNING TIMES FOR ROUTE Nos. 85 & N85**  
(based on current schedule)

**MONDAYS TO FRIDAYS**1. Kingston, Fairfield Bus Station to Putney Bridge Station

	Typical early morning	Longest morning peak	Typical interpeak	Longest afternoon peak	Typical evening	Typical late evening
<b>Kingston Fairfield Bus Station</b>	0430	0804	1259	1703	2005	2305
Norbiton Church	0434	0812	1307	1712	2011	2310
Roehampton Vale Asda	0441	0826	1320	1726	2020	2318
Roehampton Alton Rd/ Bessborough Rd	0443	0830	1324	1730	2023	2321
Roehampton Earl Spencer	0446	0833	1327	1733	2026	2324
Putney Heath Green Man	0449	0837	1331	1737	2029	2327
Putney Station	0452	0844	1337	1743	2032	2330
<b>Putney Bridge Station</b>	0456	0851	1343	1749	2037	2335
	26 minutes	47 minutes	44 minutes	46 minutes	32 minutes	30 minutes

2. Putney Bridge Station to Kingston, Fairfield Bus Station

	Typical early morning	Longest morning peak	Typical interpeak	Longest afternoon peak	Typical evening	Typical late evening
<b>Putney Bridge Station</b>	0515	0803	1235	1659	2003	2305
Putney Station	0519	0810	1242	1708	2011	2310
Putney Heath Green Man	0522	0816	1248	1716	2014	2313
Roehampton Earl Spencer	0525	0820	1252	1720	2017	2316
Roehampton Vale Asda	0529	0827	1259	1728	2021	2320
Norbiton Church	0539	0842	1312	1743	2031	2330
<b>Kingston Fairfield Bus Station</b>	0541	0846	1315	1747	2034	2332
	26 minutes	43 minutes	40 minutes	48 minutes	31 minutes	27 minutes

**SATURDAYS**

1. Kingston, Fairfield Bus Station to Putney Bridge Station

	Typical early morning	Typical late AM shopping period	Typical PM shopping period	Typical evening	Typical late evening
<b>Kingston Fairfield Bus Station</b>	0430	1029	1501	2005	2305
Norbiton Church	0435	1038	1510	2011	2310
Roehampton Vale Asda	0443	1048	1520	2020	2318
Roehampton Alton Rd/ Bessborough Rd	0446	1052	1524	2023	2321
Roehampton Earl Spencer	0449	1056	1528	2026	2324
Putney Heath Green Man	0452	1100	1532	2029	2327
Putney Station	0455	1104	1536	2032	2330
<b>Putney Bridge Station</b>	0500	1112	1544	2037	2335
	30 minutes	43 minutes	43 minutes	32 minutes	30 minutes

2. Putney Bridge Station to Kingston, Fairfield Bus Station

	Typical early morning	Typical late AM shopping period	Typical PM shopping period	Typical evening	Typical late evening
<b>Putney Bridge Station</b>	0515	1031	1503	2005	2305
Putney Station	0519	1038	1510	2010	2310
Putney Heath Green Man	0522	1043	1515	2013	2313
Roehampton Earl Spencer	0525	1047	1519	2016	2316
Roehampton Vale Asda	0529	1054	1526	2020	2320
Norbiton Church	0539	1105	1537	2030	2330
<b>Kingston Fairfield Bus Station</b>	0541	1110	1542	2033	2332
	26 minutes	39 minutes	39 minutes	28 minutes	27 minutes

**SUNDAYS**

1. Kingston, Fairfield Bus Station to Putney Bridge Station

	Typical early morning	Typical late AM shopping period	Typical PM shopping period	Typical evening	Typical late evening
<b>Kingston Fairfield Bus Station</b>	0430	1033	1503	2005	2305
Norbiton Church	0435	1041	1511	2011	2310
Roehampton Vale Asda	0443	1051	1521	2020	2318
Roehampton Alton Rd/ Bessborough Rd	0446	1055	1525	2023	2321
Roehampton Earl Spencer	0449	1058	1528	2026	2324
Putney Heath Green Man	0452	1102	1532	2029	2327
Putney Station	0455	1107	1537	2032	2330
<b>Putney Bridge Station</b>	0500	1114	1544	2037	2335
	30 minutes	41 minutes	41 minutes	32 minutes	30 minutes

2. Putney Bridge Station to Kingston, Fairfield Bus Station

	Typical early morning	Typical late AM shopping period	Typical PM shopping period	Typical evening	Typical late evening
<b>Putney Bridge Station</b>	0515	1035	1505	2005	2305
Putney Station	0519	1042	1512	2010	2310
Putney Heath Green Man	0522	1046	1516	2013	2313
Roehampton Earl Spencer	0525	1050	1520	2016	2316
Roehampton Vale Asda	0529	1055	1525	2020	2320
Norbiton Church	0539	1106	1536	2030	2330
<b>Kingston Fairfield Bus Station</b>	0541	1109	1539	2033	2332
	26 minutes	34 minutes	34 minutes	28 minutes	27 minutes



**NIGHTLY**

1. Kingston, Fairfield Bus Station to Putney Bridge Station

	Typical late night	Typical early morning
<b>Kingston Fairfield Bus Station</b>	0115	0415
Norbiton Church	0119	0419
Roehampton Vale Asda	0126	0426
Roehampton Alton Rd/ Bessborough Rd	0128	0428
Roehampton Earl Spencer	0131	0431
Putney Heath Green Man	0134	0434
Putney Station	0137	0437
<b>Putney Bridge Station</b>	0141	0441
	26	26
	minutes	minutes

2. Putney Bridge Station to Kingston, Fairfield Bus Station

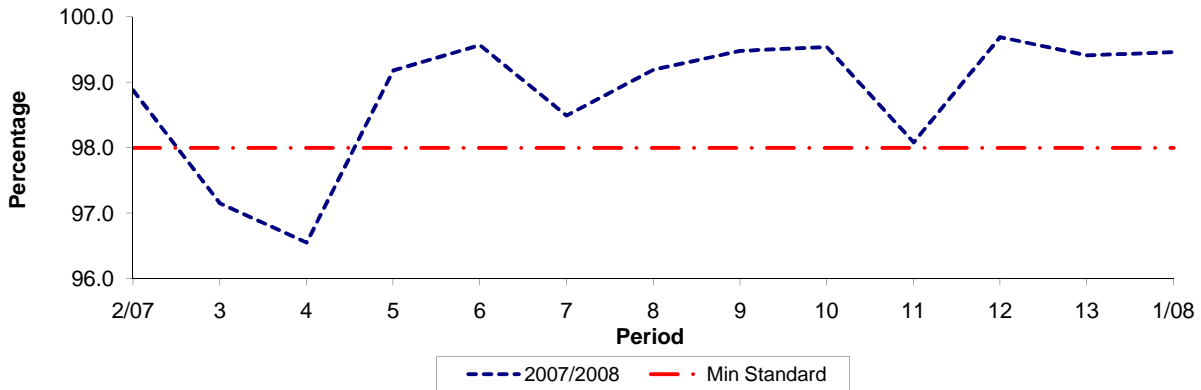
	Typical late night	Typical early morning
<b>Putney Bridge Station</b>	0146	0346
Putney Station	0150	0350
Putney Heath Green Man	0153	0353
Roehampton Earl Spencer	0156	0356
Roehampton Vale Asda	0200	0400
Norbiton Church	0208	0408
<b>Kingston Fairfield Bus Station</b>	0210	0410
	24	24
	minutes	minutes

The above tables have been included to assist Tenderers. They represent the information currently available to the Corporation. Tenderers should form their own views about what is appropriate in terms of running times. (See Section 8.)

**PART B - PERFORMANCE STATISTICS**

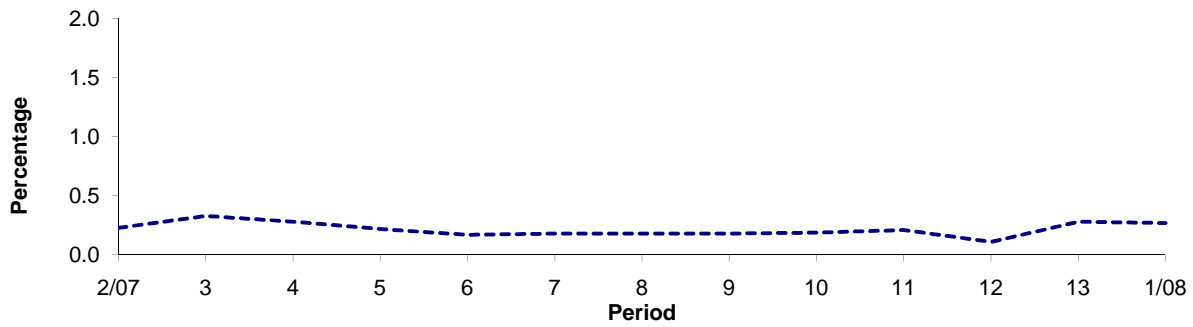
**Route 85**

**Mileage Operated**



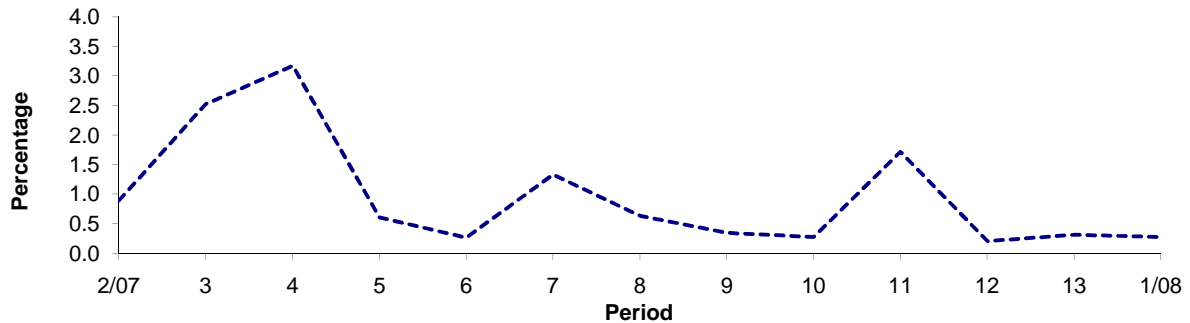
Period	2/07	3	4	5	6	7	8	9	10	11	12	13	1/08
2007/2008	98.88	97.15	96.55	99.18	99.57	98.49	99.19	99.48	99.54	98.08	99.69	99.41	99.46
Min Standard	98.00	98.00	98.00	98.00	98.00	98.00	98.00	98.00	98.00	98.00	98.00	98.00	98.00

**Deductible Mileage**



Period	2/07	3	4	5	6	7	8	9	10	11	12	13	1/08
2007/2008	0.23	0.33	0.28	0.22	0.17	0.18	0.18	0.18	0.19	0.21	0.11	0.28	0.27

**Non Deductible Mileage**



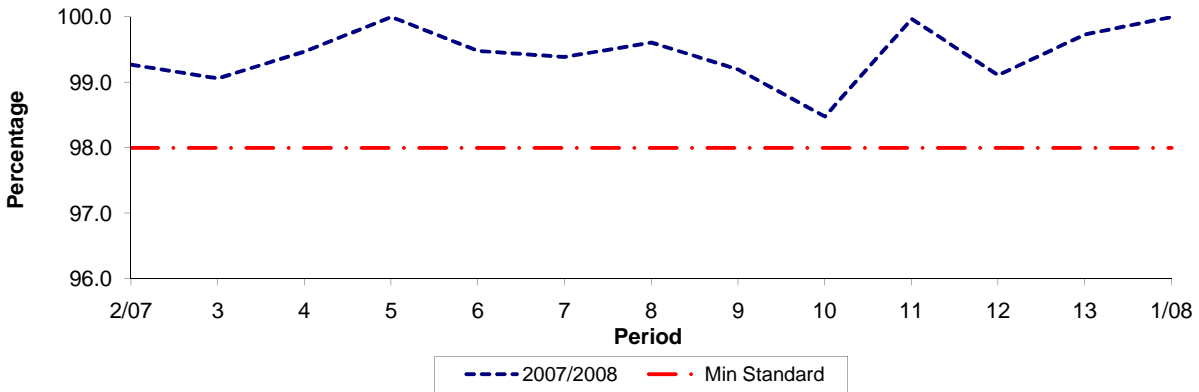
Period	2/07	3	4	5	6	7	8	9	10	11	12	13	1/08
2007/2008	0.89	2.52	3.17	0.60	0.26	1.33	0.63	0.34	0.27	1.71	0.20	0.31	0.27

**Note :** Mileage is based on 4 weeks data

**PART B - PERFORMANCE STATISTICS**

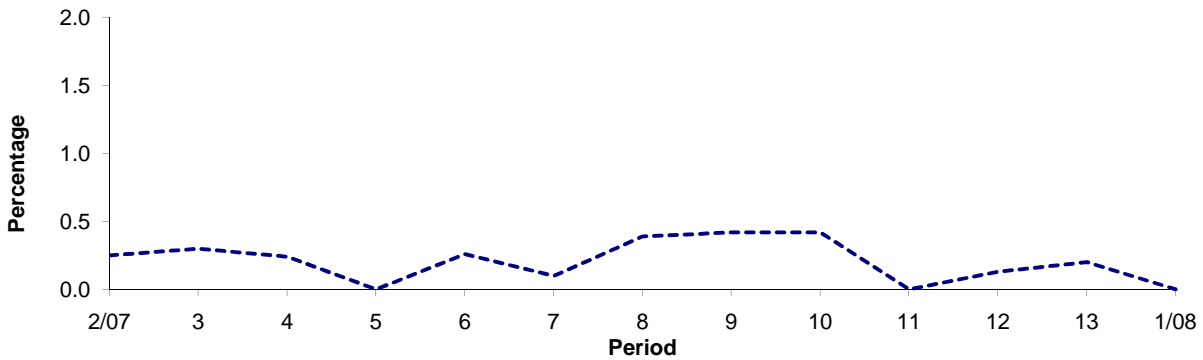
**Route N85**

**Mileage Operated**



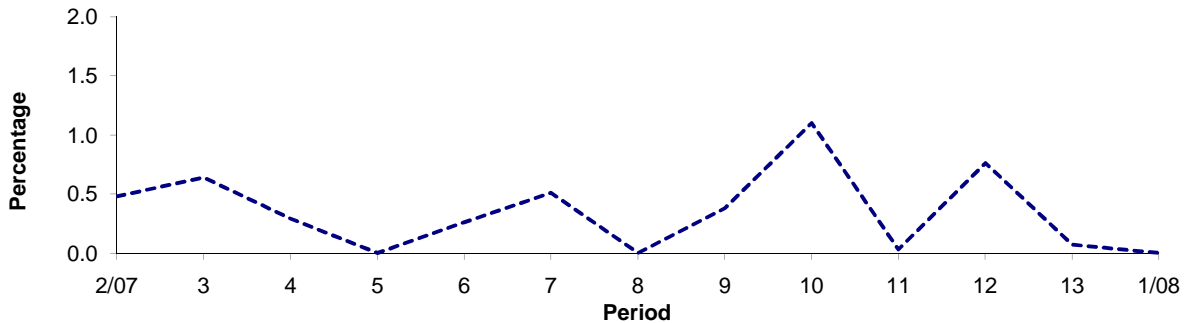
Period	2/07	3	4	5	6	7	8	9	10	11	12	13	1/08
2007/2008	99.27	99.06	99.47	100.00	99.48	99.39	99.61	99.20	98.48	99.97	99.11	99.73	100.00
Min Standard	98.00	98.00	98.00	98.00	98.00	98.00	98.00	98.00	98.00	98.00	98.00	98.00	98.00

**Deductible Mileage**



Period	2/07	3	4	5	6	7	8	9	10	11	12	13	1/08
2007/2008	0.25	0.30	0.24	0.00	0.26	0.10	0.39	0.42	0.42	0.00	0.13	0.20	0.00

**Non Deductible Mileage**

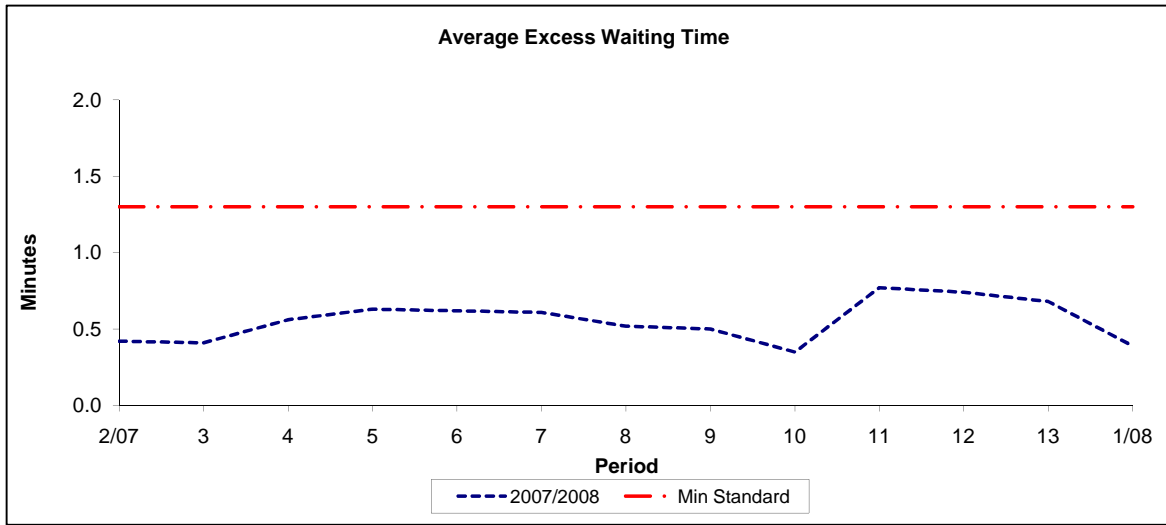


Period	2/07	3	4	5	6	7	8	9	10	11	12	13	1/08
2007/2008	0.48	0.64	0.29	0.00	0.26	0.51	0.00	0.38	1.10	0.03	0.76	0.07	0.00

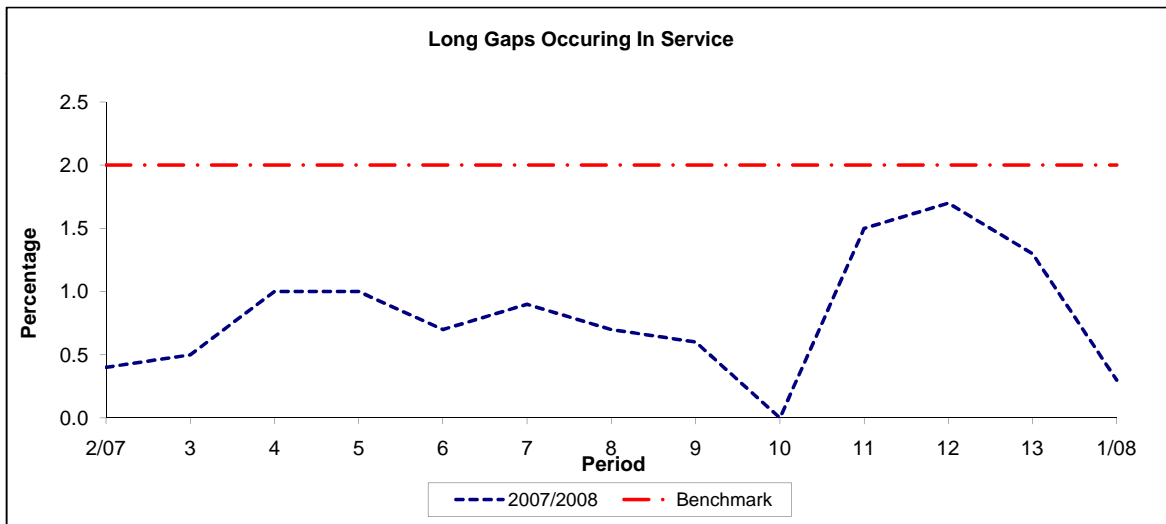
**Note :** Mileage is based on 4 weeks data

**PART B - PERFORMANCE STATISTICS**

**Route 85**



Period	2/07	3	4	5	6	7	8	9	10	11	12	13	1/08
2007/2008	0.42	0.41	0.56	0.63	0.62	0.61	0.52	0.50	0.35	0.77	0.74	0.68	0.39
Min Standard	1.30	1.30	1.30	1.30	1.30	1.30	1.30	1.30	1.30	1.30	1.30	1.30	1.30

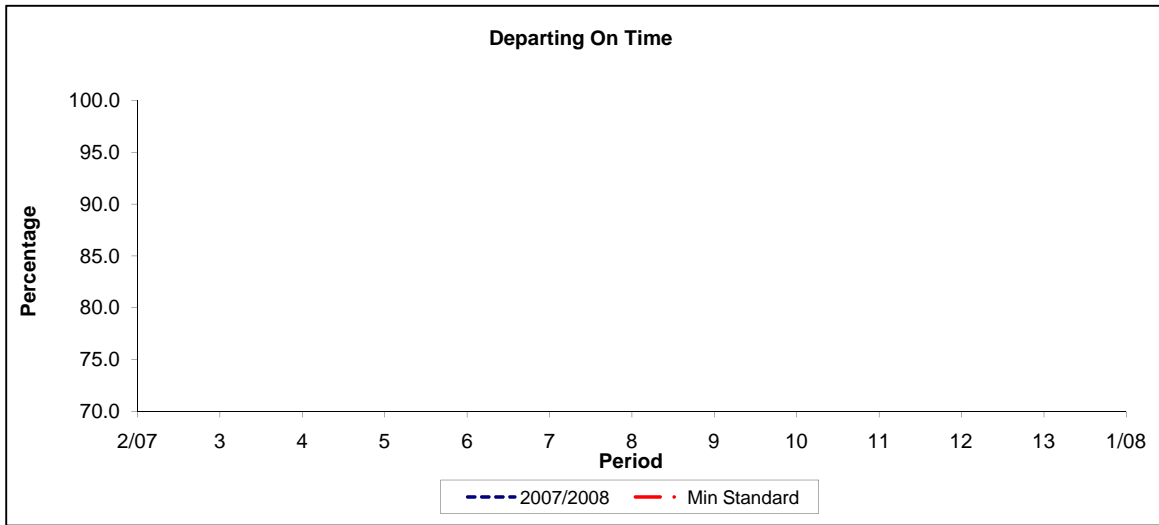


Period	2/07	3	4	5	6	7	8	9	10	11	12	13	1/08
2007/2008	0.40	0.50	1.00	1.00	0.70	0.90	0.70	0.60	0.00	1.50	1.70	1.30	0.30
Benchmark	2.00	2.00	2.00	2.00	2.00	2.00	2.00	2.00	2.00	2.00	2.00	2.00	2.00

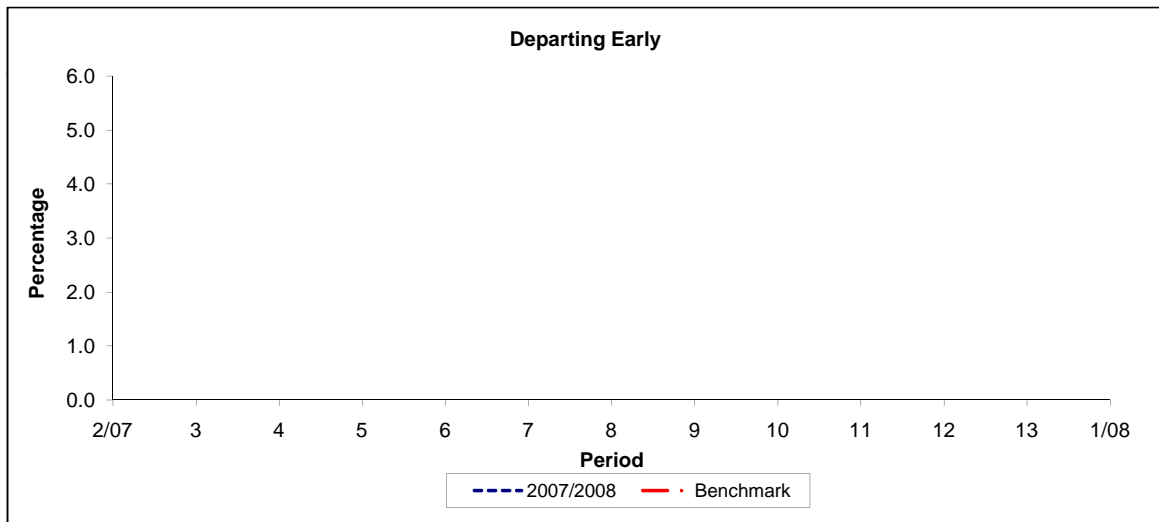
**Note :** Reliability is based on 12 weeks rolling data

**PART B - PERFORMANCE STATISTICS**

**Route N85**



Period	2/07	3	4	5	6	7	8	9	10	11	12	13	1/08
2007/2008													
Min Standard													



Period	2/07	3	4	5	6	7	8	9	10	11	12	13	1/08
2007/2008													
Benchmark													

**Note :** No reliability data - night bus route outside central London