

## SECTION 2: PART A

### SERVICE SPECIFICATION FOR ROUTE Nos. 86 & N86

#### CONTENTS

	Page
1. Tenders Required	2
2. Proposed Changes	2
3. Terminals	3
4. Days of Operation	3
5. Vehicle Type	3
6. Frequencies	4
7. Minimum Performance Standards	11
8. Running Times	12
9. Layovers	12
10. Timing Constraints	12
11. Control Strategy	13
12. Operational Considerations	13
13. Stopping Arrangements	15
14. Timing Points and Mileages	16
15. Vehicle Livery	17
 <u>Appendices</u>	
A. Route Record	18
B. Sample Running Times for Route Nos. 86 & N86	29

---

This document should be read in conjunction with the Corporation's Guide for Tenderers (Part A: Explanatory Notes - Service Requirements). Where appropriate, reference is made to the relevant section.

## 1. TENDERS REQUIRED

This document describes the service for which the Corporation requires Tenders and Tenderers **must** submit a fully compliant bid. In addition, Tenderers **may** wish to draw upon their local knowledge to submit alternative bids which offer improved value for money in meeting passenger needs. These might incorporate, for example, different timings, frequencies, route structures and / or vehicles. The Corporation will welcome such bids and give them careful consideration.

For more information, please refer to Section 2.1 of Part A of the Guide for Tenderers.

## 2. PROPOSED CHANGES

At this time, the Corporation expects to implement a change to the existing service prior to the commencement of the new Route Agreement for Route Nos. 86 & N86.

- From 28<sup>th</sup> July 2008, the temporary diversion due to the closure of Clements Road in Ilford for roadworks will cease. The normal line of routeing via Clements Road will be resumed (see section 12 for further details regarding the diversion).
- A proposal exists to relocate the westbound bus stop outside St. Edwards School just west of the school entrance. This will enable a fairly large standing area to be provided for waiting passengers and it will be possible to access the bus stop directly from the school grounds. Buses operating towards Stratford, Bus Station will no longer need to access the school grounds at the end of the school day. Thus the service will be regulated and journey times and reliability in the late afternoon should improve. **Please note, if the highway changes are not proceeded with, the three afternoon journeys at 1524, 1530 & 1536 will operate via the school grounds on Mondays to Fridays schooldays.**

Tenderers should note that the following alterations (subject to consultation) are proposed as part of this Service Specification for introduction with the new Route Agreement:

- **Tenderers must identify the cost of the Nightly element of this service separately.**
- Boxing Day frequencies are specified at Sunday frequency levels but with a later start. **Tenderers must include the cost of the Boxing Day element of this service within Section 4.1 of their tender bid. Tenderers must also identify the cost of the Boxing Day element of this service separately.**

### 3. TERMINALS

Route No. 86 will operate between Stratford, Bus Station and Romford Station.

Route No. N86 will operate between Stratford, Bus Station and Harold Hill, Dagnam Park Square.

Full details of the route to be followed, the permitted terminal workings and the available stands are shown at Appendix A. Tenderers should particularly note the information relating to the shared usage of stands, the taking of meal reliefs and the use of ferry vehicles.

### 4. DAYS OF OPERATION

One timetable must be offered for Route Nos. 86 & N86 which will operate as follows:

DAY OF OPERATION	
Mondays to Fridays	Section 6.1
Mondays to Fridays Schooldays	Section 6.2
Saturdays & Good Friday	Section 6.3
Sundays	Section 6.4
Christmas Day	No service
Boxing Day	Section 6.5
Other Public Holidays	Sunday service
Nightly	Section 6.6

\* The New Year's Eve service level should be regarded as a minimum and any frequency increases and/or diversions will be discussed with the successful Tenderer on an annual basis.

### 5. VEHICLE TYPE

Please refer to Section 2.5 of Part A of the Guide for Tenderers.

Route Nos. 86 & N86 are currently approved for vehicles which are a maximum of 10.5 metres long and 2.55 metres wide. A formal route test will be required for vehicles which exceed these dimensions. This will be arranged with the successful Tenderer.

The service requirement set out in Section 6 assumes that dual door, double deck buses with a minimum capacity of 87 of which approximately 60 should be seated, will be used on this route. Luggage space should also be provided.

Tenderers must submit proposals based on new vehicles. These must be of a low floor design and be accessible to wheelchairs by means of a powered ramp.

Tenderers should refer to the vehicle design (including accessibility) features contained in Schedule II to Annex B of the Framework Agreement and Section 2 Part B of the Master ITT (Version 2 issued June 2005).

Tenderers may also submit bids based on using existing vehicles. Tenderers are asked to specify what refurbishment would be carried out on existing buses and the expected timescale of those works. See Master ITT (Version 2 issued June 2005).

## 6. FREQUENCIES

The level of service (e.g. every 15 minutes) required by the Corporation is described in terms of the interval between departures. Whilst a completely regular service at the specified frequency should be possible at most times, occasionally a bus may be timetabled to depart up to five minutes earlier or later than the regular time. In addition, journeys with specific start or finish times are required. These times must be adhered to.

Tenderers should note that when the specified frequency changes (e.g. between the peak and midday periods), the scheduled interval between buses should never be greater than that provided by the lower of the two frequencies **AT ANY POINT ON THE ROUTE**.

Tenderers should note that unless otherwise stated **all** journeys should operate between the terminal points defined in each direction.

## 6.1 Mondays to Fridays

### 1. Stratford, Bus Station to Romford Station

0545 - 0620	Every 10 minutes
0621 - 0700	Every 8 minutes
0701 - 1930	Every 6 minutes
1931 - 2000	Every 8 minutes
2001 - 0055	Every 10 minutes

First departure from Stratford, Bus Station no later than 0550.

Last departure from Stratford, Bus Station no earlier than 0050.

Tenderers should ensure that buses are scheduled to be no more than 6 minutes apart at Chadwell Heath, Wangey Road between 0735 and 0900 and between 1500 and 1630.

### 2. Romford Station to Stratford, Bus Station

0520 - 0555	Every 10 minutes
0556 - 0640	Every 8 minutes
0641 - 1900*	Every 6 minutes
1901 - 2005	Every 8 minutes
2006 - 0020	Every 10 minutes

First departure from Romford Station no later than 0525.

Last departure from Romford Station no earlier than 0015.

Tenderers should ensure that buses are scheduled to be no more than 6 minutes apart at Manor Park Broadway between 0720 and 0900 and between 1500 and 1630.

\* See also Section 6.2.2 on page 6.

### 3. Manor Park Broadway to Stratford, Bus Station

0825	One journey
------	-------------

Tenderers should interwork this journey with the main service.

## 6.2 Mondays to Fridays Schooldays

1. Stratford, Bus Station to Romford Station

0735                      One journey

**Please note, if the highway changes detailed in Section 2 are not proceeded with, the three afternoon journeys at 1524, 1530 & 1536 will operate via the school grounds on Mondays to Fridays schooldays. The details are as follows:**

2. Romford Station to Stratford, Bus Station (via St. Edwards School grounds on Mondays to Fridays schooldays if highway changes are not proceeded with)\*

1524, 1530 & 1536                      Three Journeys (form part of the main service and are not additional journeys)

Please note, the above journeys should arrive at St. Edwards School at 1537, 1543 & 1549 respectively and should interwork with the main service. On non schooldays the above journeys will not operate via St. Edwards School.

The journeys shown in section 6.2 are specifically designed to meet the start and finish times of St. Edwards School. It is possible that these times may be altered during the life of the contract. Tenderers should indicate whether they are able to adjust the time of the specified journey by up to 20 minutes (earlier or later) without alteration to the contract price. It may also be necessary for afternoon journeys to operate earlier than stated at the end of term and on other occasions at short notice.

### 6.3 Saturdays & Good Friday

1. Stratford, Bus Station to Romford Station

0545 - 0635	Every 15 minutes
0636 - 0745	Every 10 minutes
0746 - 0825	Every 8 minutes
0826 - 1900	Every 6 minutes
1901 - 2005	Every 8 minutes
2006 - 0055	Every 10 minutes

First departure from Stratford, Bus Station no later than 0550 .  
Last departure from Stratford, Bus Station no earlier than 0050.

Tenderers should ensure that buses are scheduled to be no more than 6 minutes apart at Chadwell Heath, Wangey Road between 0905 and 1145.

2. Romford Station to Stratford, Bus Station

0520 - 0555	Every 15 minutes
0556 - 0735	Every 10 minutes
0736 - 0800	Every 8 minutes
0801 - 1830	Every 6 minutes
1831 - 1910	Every 8 minutes
1911 - 0020	Every 10 minutes

First departure from Romford Station no later than 0525.  
Last departure from Romford Station no earlier than 0015.

Tenderers should ensure that buses are scheduled to be no more than 6 minutes apart at Manor Park Broadway between 0835 and 1150.

## 6.4 Sundays

### 1. Stratford, Bus Station to Romford Station

0545 - 0820	Every 15 minutes
0821 - 0020	Every 10 minutes

First departure from Stratford, Bus Station no later than 0550.  
Last departure from Stratford, Bus Station no earlier than 0015.

Tenderers should ensure that buses are scheduled to be no more than 12 minutes apart at Chadwell Heath, Wangey Road between 1030 and 1130.

### 2. Romford Station to Stratford, Bus Station

0520 - 0810	Every 15 minutes
0811 - 0055	Every 10 minutes

First departure from Romford Station no later than 0525.  
Last departure from Romford Station no earlier than 0050.

Tenderers should ensure that buses are scheduled to be no more than 12 minutes apart at Manor Park Broadway between 1025 and 1140.



## 6.5 Boxing Day

### 1. Stratford, Bus Station to Romford Station

0820 - 0055            Every 10 minutes

First departure from Stratford, Bus Station no later than 0825.  
Last departure from Stratford, Bus Station no earlier than 0050.

Tenderers should ensure that buses are scheduled to be no more than 12 minutes apart at Chadwell Heath, Wangey Road between 1030 and 1130.

### 2. Romford Station to Stratford, Bus Station

0810 - 0020            Every 10 minutes

First departure from Romford Station no later than 0815.  
Last departure from Romford Station no earlier than 0015.

Tenderers should ensure that buses are scheduled to be no more than 12 minutes apart at Manor Park Broadway between 1025 and 1140.

**Tenderers must identify the cost of the Boxing Day element of this service separately.**

## 6.6 Nightly

1. Stratford, Bus Station to Harold Hill, Dagnam Park Square

0055 - 0535            Every 30 minutes

First departure from Stratford, Bus Station no later than 0100.  
Last departure from Stratford, Bus Station no earlier than 0530.

2. Harold Hill, Dagnam Park Square to Stratford, Bus Station

0020 - 0500            Every 30 minutes

First departure from Harold Hill, Dagnam Park Drive no later than 0025.  
Last departure from Harold Hill, Dagnam Park Drive no earlier than 0455.

**Tenderers must identify the cost of the Nightly element of this service separately.**

## 7. MINIMUM PERFORMANCE STANDARDS

Please refer to Section 2.7 of Part A of the Guide for Tenderers.

Tenderers should note that the objective of the Operator of Route Nos. 86 & N86 shall be to operate all scheduled mileage and adhere **fully** to the published timetable. The Operator must use its best endeavours to achieve this.

The **minimum** standards of acceptable performance for Route No. 86 shall be:

Average Excess Wait Time:	No more than 1.10 minutes
Minimum Operated Mileage:	No less than 98.00%

The **minimum** standards of acceptable performance for Route No. N86 shall be:

Departing on Time	No less than 85.00%
Minimum Operated Mileage	No less than 99.00%

or as notified by the Corporation from time to time. The Operator will be required to achieve or better the standards.

### QSI Thresholds

The QSI threshold is the standard of performance to be achieved by the operator in order to qualify for an automatic contract extension (in accordance with Schedule IX of the Framework Agreement).

Average Excess Wait Time Threshold = 0.95 minutes

It is unlikely that the minimum number of QSI surveys for Threshold measurement will be conducted on Route No. N86 at present. However, this may change at a later date when a Threshold figure may be published.

### Summary of proposed QSI coverage: Route Nos. 86 & N86

Note: While London Buses undertakes to carry out QSI surveys at the times and locations specified below, it may prove impossible to rearrange a survey cancelled or nullified at short notice.

### Survey locations

#### Towards Romford Station

Stratford  
 Ilford High Road  
 Chadwell Heath Sainsbury's \$

#### Towards Stratford, Bus Station

Romford Station  
 Chadwell Heath Sainsbury's \$  
 Ilford High Road

Total scheduled manual QSI surveys per quarter = 96.

\$ This location observed simultaneously in both directions – counted as two surveys.

## 8. RUNNING TIMES

Extracts from the public timetable with sample running times for Route Nos. 86 & N86 are attached at Appendix B. This gives an indication of the time required to travel the route. Attention is drawn to the variations in running times at different times of the day. Please refer to Section 2.8 of Part A of the Guide for Tenderers for further information.

Tenderers should carefully check the existing running times to ensure that they are appropriate in present traffic conditions. Tenderers should particularly check the existing running times for the Mondays to Fridays PM peak, Saturday afternoon shopping period and the Sunday shopping period on Route No. 86.

It is expected that any changes to these running times can be accommodated within existing cycle times.

When reviewing existing, and devising new, running times Tenderers should refer to:

- the minimum performance standards for Route Nos. 86 & N86 in Section 7 above;
- the historical performance data provided in Section 1 Part B of the introduction to this ITT;
- the paragraph in Section 12 referring to the proposed extension of the Cashless Boarding zone throughout the whole of the London area.

Tenderers may consider if school summer holiday schedules, incorporating running time reductions, are desirable for this route. In this event, schedules and costs must be submitted separately.

## 9. LAYOVERS

Under normal circumstances, layover time on stands and at bus stations should be restricted to that required to provide a reliable service. Longer layovers for any other purpose may only be taken with the permission of the Corporation.

## 10. TIMING CONSTRAINTS

Route No. 86 should interwork with Route No. N86 to form a seamless 24 hour service along the common routeing between Stratford, Bus Station and Romford Station.

Route No. N86 should be separated from Route Nos. 25 & N25 between Forest Gate, Green Street and Manor Park, Broadway.

Route No. N86 should be separated from Route No. 174 between Romford Station and Harold Hill, Gooshays Drive.

Tenderers submitting bids should bear this requirement in mind when compiling schedules. This requirement will be negotiated with the successful Tenderer for this route to ensure that optimal interworking/separation is delivered within its schedules.

## 11. CONTROL STRATEGY

Route Nos. 86 & N86 can suffer from the effects of traffic congestion, making some form of route control essential in order to achieve or better the minimum performance standards for this route.

Tenderers should submit proposals on the control strategy they intend to adopt and the type of control they would intend to use by completing the form provided in Section 3: Part 7 of this ITT. The cost of this control should be included within the main Tender price.

Tenderers should also indicate how they intend to facilitate driver changeovers and meal reliefs for this route.

Further information is provided in Section 2.11 of Part A of the Guide for Tenderers.

## 12. OPERATIONAL CONSIDERATIONS

Tenderers should note the following operating considerations affecting Route Nos. 86 & N86:

- Romford Market, which is held on Wednesdays, Fridays and Saturdays, can lead to traffic delays in the Romford area.
- Route No. 86 suffers from unpredictable traffic delays in the Forest Gate, Ilford and Romford areas.
- Until 28<sup>th</sup> July 2008, Route Nos. 86 & N86 are diverted due to the closure of Clements Road for roadworks. Ex Stratford, Bus Station, Route Nos. 86 & N86 are diverted from Winston Way via Griggs Approach, Ley Street, Hainault Street, Ilford High Road and Riches Road to join current line of routeing. Ex Romford Station/Harold Hill, Dagnam Park Square, Route Nos. 86 & N86 are diverted from Ilford High Road via Hainault Street, Ley Street, Griggs Approach, Winston Road, Handforth Road and Clements Road to join current line of routeing.
- As a result of safety concerns, buses are currently diverted away from South Street and Western Road (towards Romford Station) every evening from 2130 hours. Route Nos. 86 & N86 will hence be diverted northbound (towards Romford Station/Harold Hill, Dagnam Park Square) from South Street via Victoria Road and Mercury Gardens. The southbound routeing (towards Stratford, Bus Station) will not be affected. This practice initially followed police requests but following improvements to police resources and CCTV, meetings are on-going to encourage operators to return to serving the town centre.

## 12. OPERATIONAL CONSIDERATIONS - continued

Tenderers should also note the following factors/events which may have an impact on Route Nos. 86 & N86 in the foreseeable future:

- Further developments are progressing in Romford town centre, including the Market Square and the new Asda store at Liberty 2 (located at the junction of Main Road, St. Edwards Way and Mercury Gardens). Over the next 10 years, there should be fairly significant increases in residential and commercial properties within and along the inner ring road. This will affect demand on the route.
- In Romford, a proposal exists for buses in one or both directions for Route Nos. 86 & N86 to operate via Angel Way. Thus buses would no longer serve St. Edwards's Way between North Street roundabout and the London Road roundabout. New bus stops on Angel Way would improve access to the main shopping area. This proposal would also apply to Route Nos. 128, 165, 193, 252 & 496.
- In Romford, a proposal exists for Western Road to operate two-way for buses only. Buses would no longer serve Chandlers Way and Eastern Road. This will simplify the routeing and allow scope to review bus stop locations. This proposal would also apply to Route Nos. 5, 66, 103, 128, 165, 174, 175, 193, 247, 248, 252, 294, 296, 347, 365, 370, 496, 498, 499, 500, 953 & N15.
- The East London Transit will be a bus-based system. The first stage will run between Ilford, Barking, Barking Reach and Dagenham Dock Station. Later stages may extend the scheme to Barkingside, Romford, Rainham, Harold Hill, Gallions Reach and Collier Row. This scheme is intended to improve links between Barking, Ilford and Romford town centres.
- The Stratford City Development (SCD) is located to the north west of Stratford Regional Station. The planning permission includes a very large retail and leisure component. A new bus station will be built. Construction work has begun and the retail area and bus station is expected to open in Easter 2011. To the north of the retail area is Stratford International Station. Regional train services could start operating from 2009.
- The Stratford International DLR extension will be constructed by converting the North London Line (NLL) between Stratford and Canning Town to DLR operation. Four new stations will be constructed on the route including Stratford International and Stratford High Street. North of Stratford, the DLR line will be extended to the international station.
- The Olympic Park is located within an area bounded by Stratford High Street, the River Lee Navigation, Ruckholt Road and Leyton Road. The site is adjacent to and part overlaps the Stratford City Development (SCD). Construction of facilities for the 2012 Games has commenced.
- Following 2012 a number of buildings will be converted for legacy uses. This is mainly for employment purposes and 529 residential units associated with the Olympic Village. There is expected to be a residential population of 1160 by 2013/14. Further significant development is expected in the Olympic Park site after 2014. This will be more clearly defined through a Masterplan due to be worked up in detail in 2009.

## 12. OPERATIONAL CONSIDERATIONS - continued

- Crossrail is planned to open in 2017 and will operate through London (west-east) from Maidenhead and Heathrow via Paddington, Liverpool Street and Stratford to Shenfield, and via Whitechapel to Isle of Dogs (Canary Wharf) and Abbey Wood. The construction impacts of Crossrail could affect Route Nos. 86 & N86.
- A proposal exists for the development of a new Station Square in Ilford which would front Ilford Hill in addition to changes to the Chapel Road gyratory to enable re-development. This would result in the loss of the Roden Street stand and a replacement in the vicinity of Ilford Hill has been requested. The final standing and stopping arrangements are still to be determined and may be subject to alteration.
- It is anticipated that Cashless Boarding will be extended throughout London at some stage during the lifetime of this contract. **This is expected to lead to significant savings in running and recovery times to bus routes, and, therefore, potential resource (cycle time and PVR) savings are expected. Tenderers are required to identify and submit the level of savings per vehicle that could be achieved by reducing peak vehicle requirement, and/or how reliability targets could be revised when the Scheme is introduced.**

The above factors have been included to assist Tenderers and represents the information currently available to the Corporation. Tenderers should make their own enquiries about events which may impact upon the route and should form their own views about their likely effect upon it.

## 13. STOPPING ARRANGEMENTS

Buses operating on Route Nos. 86 & N86 must serve all stops on the line of route designated for the route. There are two types of bus stop:

- Compulsory (white stop flag): where all buses must stop.
- Request (red stop flag): where buses are only required to stop if a passenger rings the bell or an intending passenger signals to the driver.

On all night routes (with N prefix) and on 24 hour routes (between the hours of 0100 and 0430) all bus stops are regarded as request stops regardless of their type.

Tenderers should note that there are proposals (subject to consultation) to remove the distinction between compulsory and request stops. If approved, the successful Tenderer will be advised of these changes in detail.

## 14. TIMING POINTS & MILEAGES

### Timing Points

Buses should be timed at the following points:

#### Route No. 86

Towards Romford Station

##### **Stratford Bus Station**

Forest Gate *Green Street*  
Manor Park Broadway  
Ilford Broadway *Chapel Road*  
Ilford High Road *Hainault Street*  
Seven Kings Station  
Chadwell Heath *Wangey Road*  
Romford Market *St. Edwards Way*

##### **Romford Station**

Towards Stratford Bus Station

##### **Romford Station**

Romford Market *St. Edwards Way*  
Chadwell Heath *Wangey Road*  
Seven Kings Station  
Ilford High Road *Hainault Street*  
Ilford Broadway *High Road*  
Manor Park Broadway  
Forest Gate *Green Street*

##### **Stratford Bus Station**

#### Route No. N86

Towards Harold Hill, Dagnam Park Square

##### **Stratford Bus Station**

Forest Gate *Green Street*  
Manor Park Broadway  
Ilford Broadway *Chapel Road*  
Seven Kings Station  
Chadwell Heath *Wangey Road*  
Romford Market *St. Edwards Way*  
Romford Station  
Gallows Corner *Straight Road*  
Harold Hill *Gooshays Drive*  
**Harold Hill Dagnam Park Square**

Towards Stratford Bus Station

##### **Harold Hill Dagnam Park Square**

Harold Hill *Gooshays Drive*  
Gallows Corner *Straight Road*  
Romford Station  
Romford Market *St. Edwards Way*  
Chadwell Heath *Wangey Road*  
Seven Kings Station  
Ilford Broadway *High Road*  
Manor Park Broadway  
Forest Gate *Green Street*

##### **Stratford Bus Station**



#### 14. TIMING POINTS & MILEAGES - continued

##### **Mileages for Route No. 86**

Stratford, Bus Station to Romford Station	9.9 miles
Romford Station to Stratford, Bus Station	9.7 miles
Manor Park Broadway to Stratford, Bus Station	2.5 miles

##### **Mileages for Route No. N86**

Stratford, Bus Station to Harold Hill, Dagnam Park Square	14.8 miles
Harold Hill, Dagnam Park Square to Stratford, Bus Station	14.4 miles

Tenderers should note that:

- these measurements are believed to be accurate to within 0.5 miles, but no warranty or representation as to accuracy is given;
- out of service stand workings have not been measured and are not included within the above measurements;
- if alternative or additional measurements are used by the Tenderer, these must be stated in the tender submission;
- point to point measurements pertaining to recognised curtailment points or alternative terminals will be agreed with the successful Tenderer once the contract has been awarded.

#### 15. VEHICLE LIVERY

All vehicles to be used on Route Nos. 86 & N86 from the commencement of the new Route Agreement must be in a livery that is exclusively Corporation red. The paint should be matched accurately to the colour as defined by the following manufacturer's specifications:

ICI London Bus Red P498 FPF 3

Other manufacturers should also be able to produce this specification from the ICI colour chart.

This requirement does not include the lower panels which may be in a different colour but which shall not exceed 50cm in height, or the rooftop which should be painted white so as to reduce temperatures inside the vehicle during the summer months.

The positioning and size of Operators' logos are to be agreed between the Operator and the Corporation and, where possible, these should be above the front doors on the nearside of the vehicles and above the drivers' offside cab windows.

All livery proposals must be submitted to the Contracts Tendering Manager for approval.

## APPENDIX A: ROUTE RECORD

### ROUTE No. 86: STRATFORD, BUS STATION - ROMFORD STATION

#### STREETS TRAVERSED

**Towards Romford Station:** Stratford Bus Station, Great Eastern Road, Stratford Broadway, The Grove, Romford Road, Ilford Hill, Chapel Road, Winston Way, Handforth Road, Clements Road, Ilford High Road, Riches Road, Winston Way, Ilford High Road, Seven Kings High Road, Chadwell Heath High Road, London Road, St. Edwards Way, Mercury Gardens, Western Road, Chandlers Way, Eastern Road, South Street, Atlanta Boulevard.

**Towards Stratford, Bus Station:** Romford Station Forecourt, South Street, Western Road, Mercury Gardens, St. Edwards Way, London Road, Chadwell Heath High Road, Seven Kings High Road, Ilford High Road, Green Lane, Winston Way, Riches Road, Ilford High Road, Clements Road, Ilford High Road, Chapel Road, Ilford Hill, Romford Road, Stratford Broadway, Great Eastern Road, Station Street, Stratford Bus Station.

#### STANDS, TURNING POINTS AND DESTINATION BLINDS

Tenderers should note that under normal circumstances, the specific restrictions relating to each stand will apply to the whole stand at all times. Any variation to such standing arrangements must be agreed by the Corporation. In addition, Tenderers should note the following general requirements:

- 1) Drivers MUST switch off engines during layover periods at bus stations or on stands.
- 2) No meal reliefs may be taken on any stand (on or off line of route) without the permission of the Corporation.
- 3) No crew ferry vehicles may enter any stand (on or off line of route) without the permission of the Corporation.
- 4) Destination blind displays to be used are shown under each stand description. Tenderers may suggest, within their bids, alternative blind displays.
- 5) The intermediate (also known as via) blind display to be used on the nearside of the vehicle is shown in the box below:

86 via Ilford
---------------

For further information, please refer to Annex C of the Framework Agreement: General Conditions relating to the use of London Buses' Bus Stations and Stands.

### **STRATFORD BUS STATION**

Private stand for up to 14 buses facing north in Stratford Bus Station on west side of Great Eastern Road.

Buses proceed from Stratford Bus Station to stand, departing to Stratford Bus Station. Set down in Stratford Bus Station, at alighting point AP2 and pick up in Stratford Bus Station, at stop B.

AVAILABILITY:	At any time.
OPERATING RESTRICTIONS:	No more than <b>3</b> vehicles on Route No. 86 should be scheduled to stand at any one time.
MEAL RELIEFS:	No meal relief vehicles to stand at any time.
FERRY VEHICLES:	No ferry vehicles to park on stand at any time.
OTHER INFORMATION:	London Buses toilet facilities available 24 hours a day.
BLIND DISPLAY:	Stratford

### **FOREST GATE, GREEN STREET, FINDEN ROAD (from Romford Station)**

Public stand on south side of Finden Road, commencing 12 metres east of centre of Green Street and extending 19 metres east.

Buses proceed from Romford Road via Ratcliff Road and Finden Road to stand, departing via Finden Road and Green Street to Romford Road. Set down in Romford Road and pick up in Romford Road, at stop P.

AVAILABILITY:	At any time.
OPERATING RESTRICTIONS:	To be used for unscheduled curtailments only.
MEAL RELIEFS:	No meal relief vehicles to stand at any time.
FERRY VEHICLES:	No ferry vehicles to park on stand at any time.
BLIND DISPLAY:	Forest Gate, Police Station

### **MANOR PARK STATION**

Public stand on west side of Gladding Road, commencing 18 metres south of centre of Capel Road and extending 24 metres to a point opposite flank wall of 17-18C.

#### **From Stratford, Bus Station**

Buses proceed from Romford Road via Station Road, Whitta Road and Gladding Road to stand, departing via Gladding Road, Capel Road, Forest Drive and Station Road to Romford Road. Set down in Romford Road, at stop E and pick up in Romford Road, at stop G.

#### **From Romford Station**

Buses proceed from Romford Road via Station Road, Whitta Road and Gladding Road to stand, departing via Gladding Road, Capel Road, Forest Drive and Station Road to Romford Road. Set down in Romford Road, at Stop F and pick up in Romford Road, at stop K.

AVAILABILITY:	At any time.
OPERATING RESTRICTIONS:	To be used for unscheduled curtailments only.
MEAL RELIEFS:	No meal relief vehicles to stand at any time.
FERRY VEHICLES:	No ferry vehicles to park on stand at any time.
BLIND DISPLAY:	Manor Park

### **ILFORD, RODEN STREET (from Romford Station)**

Private stand at junction of Chapel Road and Roden Street, extending 45 metres on nearside and 12 metres on offside.

Buses proceed from Ilford High Road via Chapel Road and Roden Street to stand, departing via Roden Street and Chapel Road to Ilford Hill. Set down in Ilford High Road, at stop L and pick up in Ilford Hill, at stop F.

AVAILABILITY:	At any time.
OPERATING RESTRICTIONS:	To be used for unscheduled curtailments only.
MEAL RELIEFS:	No meal relief vehicles to stand at any time.
FERRY VEHICLES:	No ferry vehicles to park on stand at any time.
BLIND DISPLAY:	Ilford Broadway

### **ILFORD, HAINAULT STREET (from Stratford, Bus Station)**

Private stand for 14 buses in marked bays in Bus Parking Area on east side of Hainault Street in two sections:

1. 4 articulated buses on east side of stand for Route 25.
2. 10 buses on west side of stand for other routes with first 3 bays (nearest entrance) restricted to midi-buses.

Buses proceed from Ilford High Road via Hainault Street and Ilford Bus Station to stand, departing via Ilford Bus Station, Ley Street and Hainault Street to Ilford High Road. Set down in Winston Way, at stop S and pick up in Ilford High Road, at stop V.

AVAILABILITY:	At any time.
OPERATING RESTRICTIONS:	To be used for unscheduled curtailments only.
MEAL RELIEFS:	No meal relief vehicles to stand at any time.
FERRY VEHICLES:	No ferry vehicles to park on stand at any time.
BLIND DISPLAY:	Ilford

### **CHADWELL HEATH, WANGHEY ROAD**

Public stand on west side of Wanghey Road in two parts: (1) commencing 6 metres south of No. 8 and extending 35 metres south; (2) commencing 7 metres south of Cedar Park Gardens and extending 21 metres south.

#### From Stratford, Bus Station

Buses proceed from Chadwell Heath High Road via Station Road and Wanghey Road to stand, departing via Wanghey Road to Chadwell Heath High Road. Set down in Chadwell Heath High Road, at stop C and pick up in Chadwell Heath High Road, at stop D.

#### From Romford Station

Buses proceed from Chadwell Heath High Road via Station Road and Wanghey Road to stand, departing via Wanghey Road to Chadwell Heath High Road. Set down in Chadwell Heath High Road, at stop H and pick up in Chadwell Heath High Road, at stop C.

AVAILABILITY:	At any time.
OPERATING RESTRICTIONS:	To be used for unscheduled curtailments only.
MEAL RELIEFS:	No meal relief vehicles to stand at any time.
FERRY VEHICLES:	No ferry vehicles to park on stand at any time.
BLIND DISPLAY:	Chadwell Heath

**ROMFORD MARKET, ST. EDWARDS WAY (from Stratford, Bus Station)**

Public stand for 5 buses on north side of St. Edwards Way, at the junction with Church Lane.

Buses proceed from St. Edwards Way via St. Edwards Way Bus Stand to stand, departing via St. Edwards Way Bus Stand, St. Edwards Way, Main Road, Mercury Gardens, Main Road and Mercury Gardens to St. Edwards Way. Set down in St. Edwards Way, at alighting point and pick up in St. Edwards Way, at stop L.

AVAILABILITY: At any time.  
OPERATING RESTRICTIONS: To be used for unscheduled curtailments only.  
MEAL RELIEFS: No meal relief vehicles to stand at any time.  
FERRY VEHICLES: No ferry vehicles to park on stand at any time.  
BLIND DISPLAY: Romford Market

**ROMFORD STATION, ATLANTA BOULEVARD**

Private stand for 15 buses in marked bays in Bus Parking Area in Atlanta Boulevard on south side of Romford Station.

Buses proceed from Atlanta Boulevard direct to stand, departing via Atlanta Boulevard to Romford Station Forecourt. Set down in Atlanta Boulevard, at alighting point and pick up in Romford Station Forecourt, at stop Z.

AVAILABILITY: At any time.  
OPERATING RESTRICTIONS: No more than 2 vehicles on Route No. 86 should be scheduled to stand at any one time  
MEAL RELIEFS: No meal relief vehicles to stand at any time.  
FERRY VEHICLES: No ferry vehicles to park on stand at any time.  
OTHER INFORMATION: London Buses toilet facilities available 24 hours a day.  
BLIND DISPLAY: Romford Station

## APPENDIX A: ROUTE RECORD

### ROUTE No. N86: STRATFORD, BUS STATION - HAROLD HILL, DAGNAM PARK SQUARE

#### STREETS TRAVERSED

**Towards Harold Hill, Dagnam Park Square:** Stratford Bus Station, Great Eastern Road, Stratford Broadway, The Grove, Romford Road, Ilford Hill, Chapel Road, Winston Way, Handforth Road, Clements Road, Ilford High Road, Riches Road, Winston Way, Ilford High Road, Seven Kings High Road, Chadwell Heath High Road, London Road, St. Edwards Way, Main Road, Mercury Gardens, Western Road, Chandlers Way, Eastern Road, South Street, Atlanta Boulevard, Romford Station Forecourt, South Street, Western Road, Mercury Gardens, Main Road, Gallows Corner, Straight Road, Hilldene Avenue, Dagnam Park Drive, Leamington Road, Petersfield Avenue, Dagnam Park Drive.

**Towards Stratford, Bus Station:** Dagnam Park Drive, Hilldene Avenue, Straight Road, Gallows Corner, Main Road, Mercury Gardens, Western Road, Chandlers Way, Eastern Road, South Street, Atlanta Boulevard, Romford Station Forecourt, South Street, Western Road, Mercury Gardens, St. Edwards Way, London Road, Chadwell Heath High Road, Seven Kings High Road, Ilford High Road, Green Lane, Winston Way, Riches Road, Ilford High Road, Clements Road, Ilford High Road, Chapel Road, Ilford Hill, Romford Road, Stratford Broadway, Great Eastern Road, Station Street, Stratford Bus Station.

#### STANDS, TURNING POINTS AND DESTINATION BLINDS

Tenderers should note that under normal circumstances, the specific restrictions relating to each stand will apply to the whole stand at all times. Any variation to such standing arrangements must be agreed by the Corporation. In addition, Tenderers should note the following general requirements:

- 1) Drivers MUST switch off engines during layover periods at bus stations or on stands.
- 2) No meal reliefs may be taken on any stand (on or off line of route) without the permission of the Corporation.
- 3) No crew ferry vehicles may enter any stand (on or off line of route) without the permission of the Corporation.
- 4) Destination blind displays to be used are shown under each stand description. Tenderers may suggest, within their bids, alternative blind displays.
- 5) The intermediate (also known as via) blind display to be used on the nearside of the vehicle is shown in the box below:

N86 via Romford
-----------------

For further information, please refer to Annex C of the Framework Agreement: General Conditions relating to the use of London Buses' Bus Stations and Stands.

### **STRATFORD BUS STATION**

Private stand for up to 14 buses facing north in Stratford Bus Station on west side of Great Eastern Road.

Buses proceed from Stratford Bus Station to stand, departing to Stratford Bus Station. Set down in Stratford Bus Station, at alighting point AP2 and pick up in Stratford Bus Station, at stop B.

AVAILABILITY:	At any time.
OPERATING RESTRICTIONS:	No more than 2 vehicles on Route No. N86 should be scheduled to stand at any one time.
MEAL RELIEFS:	No meal relief vehicles to stand at any time.
FERRY VEHICLES:	No ferry vehicles to park on stand at any time.
OTHER INFORMATION:	Council toilet facilities available 24 hours a day.
BLIND DISPLAY:	Stratford

### **FOREST GATE, GREEN STREET, FINDEN ROAD (from Harold Hill, Daqnam Park Square)**

Public stand on south side of Finden Road, commencing 12 metres east of centre of Green Street and extending 19 metres east.

Buses proceed from Romford Road via Ratcliff Road and Finden Road to stand, departing via Finden Road and Green Street to Romford Road. Set down in Romford Road and pick up in Romford Road, at stop P.

AVAILABILITY:	At any time.
OPERATING RESTRICTIONS:	To be used for unscheduled curtailments only
MEAL RELIEFS:	No meal relief vehicles to stand at any time.
FERRY VEHICLES:	No ferry vehicles to park on stand at any time.
BLIND DISPLAY:	Forest Gate, Police Station



### **MANOR PARK STATION, GLADDING ROAD**

Public stand on west side of Gladding Road, commencing 18 metres south of centre of Capel Road and extending 24 metres to a point opposite flank wall of 17-18C.

#### **From Stratford, Bus Station**

Buses proceed from Romford Road via Station Road, Whitta Road and Gladding Road to stand, departing via Gladding Road, Capel Road, Forest Drive and Station Road to Romford Road. Set down in Romford Road, at stop E and pick up in Romford Road, at stop G.

#### **From Harold Hill, Dagnam Park Square**

Buses proceed from Romford Road via Station Road, Whitta Road and Gladding Road to stand, departing via Gladding Road, Capel Road, Forest Drive and Station Road to Romford Road. Set down in Romford Road, at stop F and pick up in Romford Road, at stop K.

AVAILABILITY:	At any time.
OPERATING RESTRICTIONS:	To be used for unscheduled curtailments only.
MEAL RELIEFS:	No meal relief vehicles to stand at any time.
FERRY VEHICLES:	No ferry vehicles to park on stand at any time.
BLIND DISPLAY:	Manor Park

### **ILFORD, RODEN STREET (from Harold Hill, Dagnam Park Square)**

Private stand at junction of Chapel Road and Roden Street, extending 45 metres on nearside and 12 metres on offside.

Buses proceed from Ilford High Road via Chapel Road and Roden Street to stand, departing via Roden Street and Chapel Road to Ilford Hill. Set down in Ilford High Road, at stop L and pick up in Ilford Hill, at stop F.

AVAILABILITY:	At any time.
OPERATING RESTRICTIONS:	To be used for unscheduled curtailments only.
MEAL RELIEFS:	No meal relief vehicles to stand at any time.
FERRY VEHICLES:	No ferry vehicles to park on stand at any time.
BLIND DISPLAY:	Ilford Broadway

### **ILFORD, HAINAULT STREET (from Stratford, Bus Station)**

Private stand for 14 buses in marked bays in Bus Parking Area on east side of Hainault Street in two sections:

1. 4 articulated buses on east side of stand for Route 25.
2. 10 buses on west side of stand for other routes with first 3 bays (nearest entrance) restricted to midi-buses.

Buses proceed from Ilford High Road via Hainault Street and Ilford Bus Station to stand, departing via Ilford Bus Station, Ley Street and Hainault Street to Ilford High Road. Set down in Winston Way, at stop S and pick up in Ilford High Road, at stop V.

AVAILABILITY:	At any time.
OPERATING RESTRICTIONS:	To be used for unscheduled curtailments only.
MEAL RELIEFS:	No meal relief vehicles to stand at any time.
FERRY VEHICLES:	No ferry vehicles to park on stand at any time.
BLIND DISPLAY:	Ilford

### **CHADWELL HEATH, WANGHEY ROAD**

Public stand on west side of Wanghey Road in two parts: (1) commencing 6 metres south of No. 8 and extending 35 metres south; (2) commencing 7 metres south of Cedar Park Gardens and extending 21 metres south.

#### From Stratford, Bus Station

Buses proceed from Chadwell Heath High Road via Station Road and Wanghey Road to stand, departing via Wanghey Road to Chadwell Heath High Road. Set down in Chadwell Heath High Road, at stop C and pick up in Chadwell Heath High Road, at stop D.

#### From Harold Hill, Dagnam Park Square

Buses proceed from Chadwell Heath High Road via Station Road and Wanghey Road to stand, departing via Wanghey Road to Chadwell Heath High Road. Set down in Chadwell Heath High Road, at stop H and pick up in Chadwell Heath High Road, at stop C.

AVAILABILITY:	At any time.
OPERATING RESTRICTIONS:	To be used for unscheduled curtailments only.
MEAL RELIEFS:	No meal relief vehicles to stand at any time.
FERRY VEHICLES:	No ferry vehicles to park on stand at any time.
BLIND DISPLAY:	Chadwell Heath

**ROMFORD MARKET, ST. EDWARDS WAY (from Stratford, Bus Station)**

Public stand for 5 buses on north side of St. Edwards Way, at the junction with Church Lane.

Buses proceed from St. Edwards Way via St. Edwards Way Bus Stand to stand, departing via St. Edwards Way Bus Stand, St. Edwards Way, Main Road, Mercury Gardens, Main Road and Mercury Gardens to St. Edwards Way. Set down in St. Edwards Way, at alighting point and pick up in St. Edwards Way, at stop L.

AVAILABILITY: At any time.  
OPERATING RESTRICTIONS: To be used for unscheduled curtailments only.  
MEAL RELIEFS: No meal relief vehicles to stand at any time.  
FERRY VEHICLES: No ferry vehicles to park on stand at any time.  
BLIND DISPLAY: Romford Market

**ROMFORD STATION, ATLANTA BOULEVARD (from Stratford, Bus Station)**

Private stand for 15 buses in marked bays in Bus Parking Area in Atlanta Boulevard on south side of Romford Station.

Buses proceed from Atlanta Boulevard direct to stand, departing via Atlanta Boulevard to Romford Station Forecourt. Set down in Atlanta Boulevard, at alighting point and pick up in Romford Station Forecourt, at stop Z.

AVAILABILITY: At any time.  
OPERATING RESTRICTIONS: To be used for unscheduled curtailments only  
MEAL RELIEFS: No meal relief vehicles to stand at any time.  
FERRY VEHICLES: No ferry vehicles to park on stand at any time.  
BLIND DISPLAY: Romford Station

**GALLOWS CORNER**

From Stratford, Bus Station

Buses proceed from Main Road via Gallows Corner departing to Main Road. Set down in Main Road, at stop GN and pick up in Main Road, at stop GQ.

From Harold Hill, Dagnam Park Square

Buses proceed from Straight Road via Gallows Corner departing to Straight Road. Set down in Straight Road, at stop GE and pick up in Straight Road, at stop GL.

AVAILABILITY: At any time.  
OPERATING RESTRICTIONS: **Turning Point Only - Buses must not stand.**  
BLIND DISPLAY: Gallows Corner

**HAROLD HILL, DAGNAM PARK SQUARE**

Public stand on west side of Dagnam Park Drive, commencing opposite No. 17 Dagnam Park Square and extending 30 metres southwards to a point opposite lamp standard No. 52.

Buses proceed from Dagnam Park Drive direct to stand, departing to Dagnam Park Drive. Set down and pick up in Dagnam Park Drive, at stop DJ.

AVAILABILITY:	At any time.
OPERATING RESTRICTIONS:	No more than <b>2</b> vehicles on Route No. N86 should be scheduled to stand at any one time.
MEAL RELIEFS:	No meal relief vehicles to stand at any time.
FERRY VEHICLES:	No ferry vehicles to park on stand at any time.
OTHER INFORMATION:	No toilet facilities available.
BLIND DISPLAY:	Harold Hill, Dagnam Park Drive

**APPENDIX B: SAMPLE RUNNING TIMES FOR ROUTE No. 86**

(based on current schedule)

**MONDAYS TO FRIDAYS**

1. Stratford, Bus Station to Romford Station

	Typical early morning	Longest morning peak	Typical interpeak	Longest afternoon peak	Typical evening	Typical late evening
<b>Stratford Bus Station</b>	0550	0803	1232	1707	2002	2301
Forest Gate <i>Green Street</i>	0558	0815	1246	1722	2013	2311
Manor Park Broadway	0601	0819	1251	1727	2018	2316
Iford Broadway	0606	0825	1300	1738	2024	2322
Iford High Road <i>Hainault Street</i>	0609	0830	1306	1742	2027	2325
Seven Kings Station	0613	0836	1312	1748	2031	2329
Chadwell Heath <i>Wangey Road</i>	0619	0843	1320	1758	2038	2336
Romford Market <i>St. Edwards Way</i>	0629	0857	1333	1813	2048	2344
<b>Romford Station</b>	0632	0901	1337	1816	2051	2346
	42 minutes	58 minutes	65 minutes	69 minutes	49 minutes	45 minutes

2. Romford Station to Stratford, Bus Station

	Typical early morning	Longest morning peak	Typical interpeak	Longest afternoon peak	Typical evening	Typical late evening
<b>Romford Station</b>	0524	0803	1225	1700	2006	2306
Romford Market <i>St. Edwards Way</i>	0526	0807	1229	1704	2010	2309
Chadwell Heath <i>Wangey Road</i>	0535	0820	1243	1717	2022	2320
Seven Kings Station	0541	0829	1251	1725	2028	2326
Iford High Road <i>Hainault Street</i>	0545	0837	1258	1732	2034	2331
Iford Broadway	0547	0840	1301	1735	2036	2333
Manor Park Broadway	0553	0851	1313	1749	2044	2341
Forest Gate <i>Green Street</i>	0556	0856	1320	1755	2049	2345
<b>Stratford Bus Station</b>	0603	0909	1332	1805	2058	2353
	39 minutes	66 minutes	67 minutes	65 minutes	52 minutes	47 minutes

**SATURDAYS**1. Stratford, Bus Station to Romford Station

	Typical early morning	Typical AM shopping period	Typical PM shopping period	Typical evening	Typical late evening
<b>Stratford Bus Station</b>	0550	1030	1502	2001	2300
Forest Gate <i>Green Street</i>	0558	1040	1515	2012	2310
Manor Park Broadway	0601	1045	1520	2017	2315
Iford Broadway	0606	1052	1530	2023	2321
Iford High Road <i>Hainault Street</i>	0609	1057	1536	2026	2324
Seven Kings Station	0613	1104	1543	2030	2328
Chadwell Heath <i>Wangey Road</i>	0619	1116	1555	2037	2335
Romford Market <i>St. Edwards Way</i>	0629	1131	1610	2047	2343
<b>Romford Station</b>	0632	1135	1614	2050	2345
	42 minutes	65 minutes	72 minutes	49 minutes	45 minutes

2. Romford Station to Stratford, Bus Station

	Typical early morning	Typical AM shopping period	Typical PM shopping period	Typical evening	Typical late evening
<b>Romford Station</b>	0524	1031	1502	2006	2306
Romford Market <i>St. Edwards Way</i>	0526	1035	1507	2010	2309
Chadwell Heath <i>Wangey Road</i>	0535	1047	1522	2022	2320
Seven Kings Station	0541	1055	1531	2028	2326
Iford High Road <i>Hainault Street</i>	0545	1101	1538	2034	2331
Iford Broadway	0547	1104	1541	2036	2333
Manor Park Broadway	0553	1117	1557	2044	2341
Forest Gate <i>Green Street</i>	0556	1123	1600	2049	2345
<b>Stratford Bus Station</b>	0603	1134	1611	2058	2353
	39 minutes	63 minutes	69 minutes	52 minutes	47 minutes

**SUNDAYS**1. Stratford, Bus Station to Romford Station

	Typical early morning	Typical AM shopping period	Typical PM shopping period	Typical evening	Typical late evening
<b>Stratford Bus Station</b>	0550	1034	1506	2001	2300
Forest Gate <i>Green Street</i>	0558	1044	1520	2012	2310
Manor Park Broadway	0601	1049	1525	2017	2315
Iford Broadway	0606	1057	1537	2023	2321
Iford High Road <i>Hainault Street</i>	0609	1102	1542	2026	2324
Seven Kings Station	0613	1109	1549	2030	2328
Chadwell Heath <i>Wangey Road</i>	0619	1117	1557	2037	2335
Romford Market <i>St. Edwards Way</i>	0629	1131	1611	2047	2343
<b>Romford Station</b>	0632	1134	1614	2050	2345
	42 minutes	60 minutes	68 minutes	49 minutes	45 minutes

2. Romford Station to Stratford, Bus Station

	Typical early morning	Typical AM shopping period	Typical PM shopping period	Typical evening	Typical late evening
<b>Romford Station</b>	0524	1031	1506	2006	2306
Romford Market <i>St. Edwards Way</i>	0526	1034	1510	2010	2309
Chadwell Heath <i>Wangey Road</i>	0535	1045	1522	2022	2320
Seven Kings Station	0541	1051	1530	2028	2326
Iford High Road <i>Hainault Street</i>	0545	1057	1536	2034	2331
Iford Broadway	0547	1100	1539	2036	2333
Manor Park Broadway	0553	1111	1551	2044	2341
Forest Gate <i>Green Street</i>	0556	1117	1557	2049	2345
<b>Stratford Bus Station</b>	0603	1127	1607	2058	2353
	39 minutes	56 minutes	61 minutes	52 minutes	47 minutes

The above tables have been included to assist Tenderers. They represent the information currently available to the Corporation. Tenderers should form their own views about what is appropriate in terms of running times. (See Section 8.)

**APPENDIX B: SAMPLE RUNNING TIMES FOR ROUTE No. N86**  
(based on current schedule)

**NIGHTLY**1. Stratford, Bus Station to Harold Hill, Dagnam Park Square

	Typical Late Night	Typical Early Morning
<b>Stratford Bus Station</b>	0100	0400
Forest Gate <i>Green Street</i>	0105	0405
Manor Park Broadway	0108	0408
Ilford Broadway	0114	0414
Seven Kings Station	0120	0420
Chadwell Heath <i>Wangey Road</i>	0124	0424
Romford Market <i>St. Edwards Way</i>	0131	0431
Romford Station	0133	0433
Gallows Corner <i>Straight Road</i>	0140	0440
Harold Hill <i>Gooshays Drive</i>	0145	0445
<b>Harold Hill Dagnam Park Square</b>	0150	0450
	50 minutes	50 minutes

2. Harold Hill, Dagnam Park Square to Stratford, Bus Station

	Typical Late Night	Typical Early Morning
<b>Harold Hill Dagnam Park Square</b>	0057	0357
Harold Hill <i>Gooshays Drive</i>	0101	0401
Gallows Corner <i>Straight Road</i>	0106	0406
Romford Station	0113	0413
Romford Market <i>St. Edwards Way</i>	0115	0415
Chadwell Heath <i>Wangey Road</i>	0122	0422
Seven Kings Station	0126	0426
Ilford Broadway	0133	0433
Manor Park Broadway	0139	0439
Forest Gate <i>Green Street</i>	0142	0442
<b>Stratford Bus Station</b>	0147	0449
	50 minutes	52 minutes

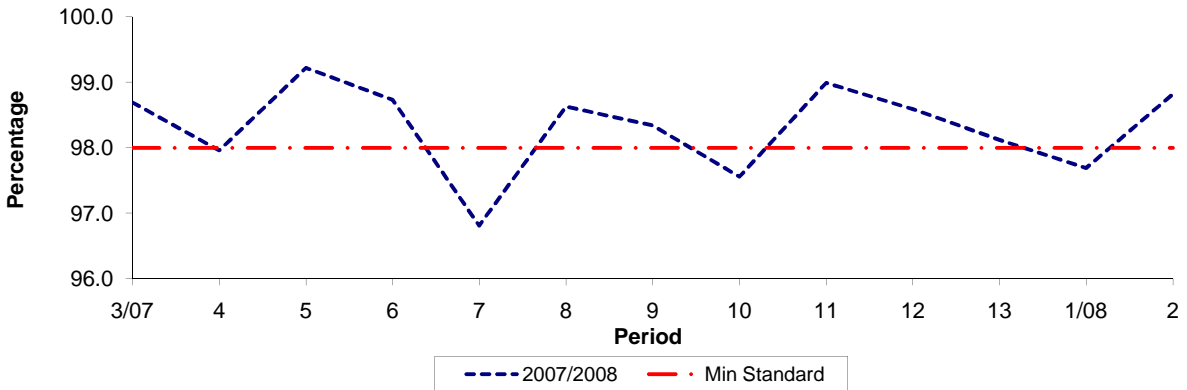
The above tables have been included to assist Tenderers. They represent the information currently available to the Corporation. Tenderers should form their own views about what is appropriate in terms of running times. (See Section 8.)



**PART B - PERFORMANCE STATISTICS**

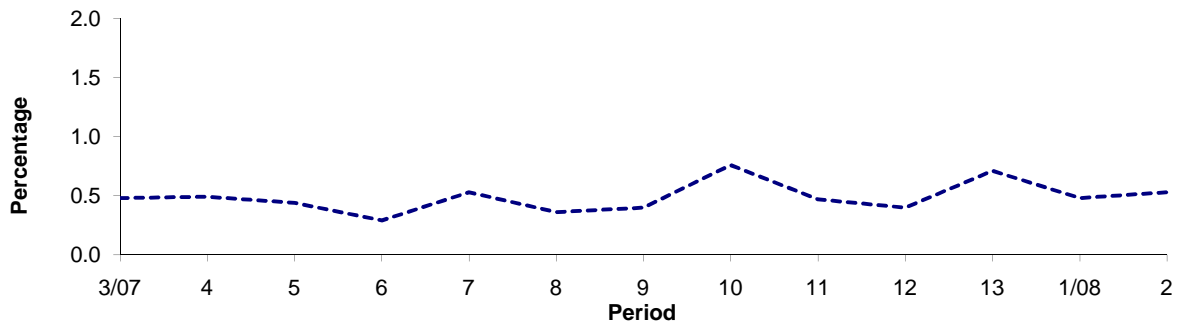
**Route 86**

**Mileage Operated**



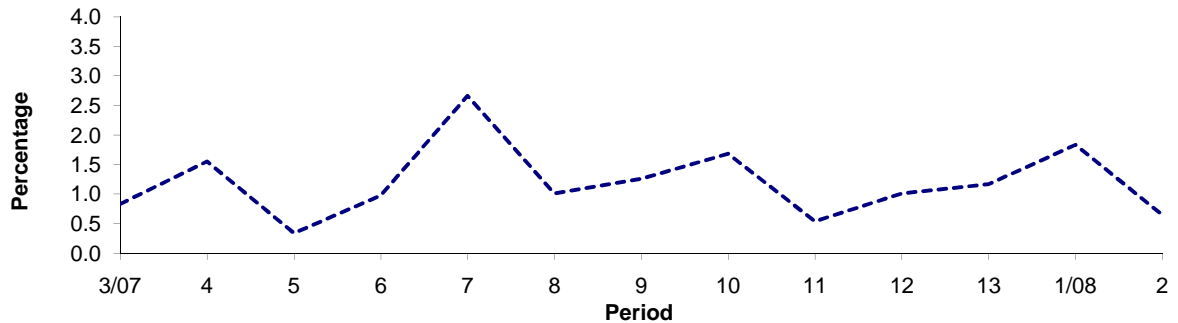
Period	3/07	4	5	6	7	8	9	10	11	12	13	1/08	2
2007/2008	98.69	97.96	99.22	98.73	96.81	98.63	98.34	97.56	98.99	98.59	98.12	97.69	98.82
Min Standard	98.00	98.00	98.00	98.00	98.00	98.00	98.00	98.00	98.00	98.00	98.00	98.00	98.00

**Deductible Mileage**



Period	3/07	4	5	6	7	8	9	10	11	12	13	1/08	2
2007/2008	0.48	0.49	0.44	0.29	0.53	0.36	0.40	0.76	0.47	0.40	0.71	0.48	0.53

**Non Deductible Mileage**



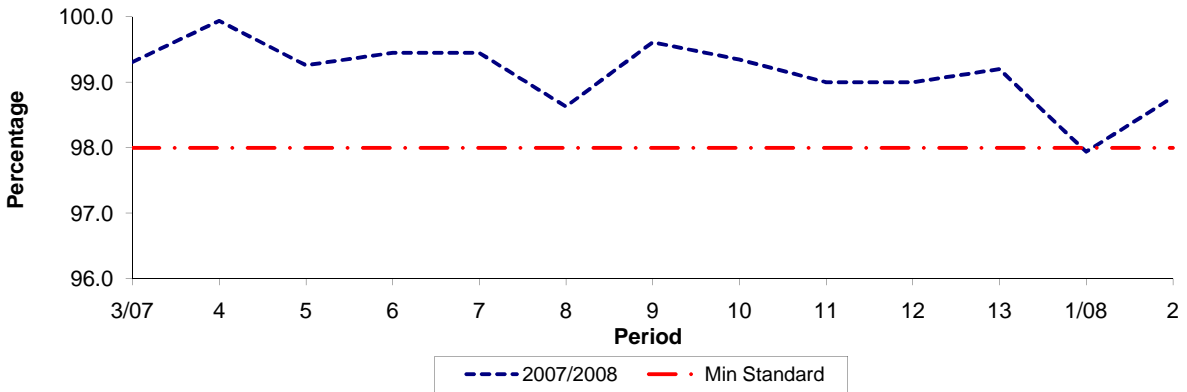
Period	3/07	4	5	6	7	8	9	10	11	12	13	1/08	2
2007/2008	0.83	1.55	0.34	0.98	2.66	1.01	1.26	1.68	0.54	1.01	1.17	1.83	0.65

**Note :** Mileage is based on 4 weeks data

**PART B - PERFORMANCE STATISTICS**

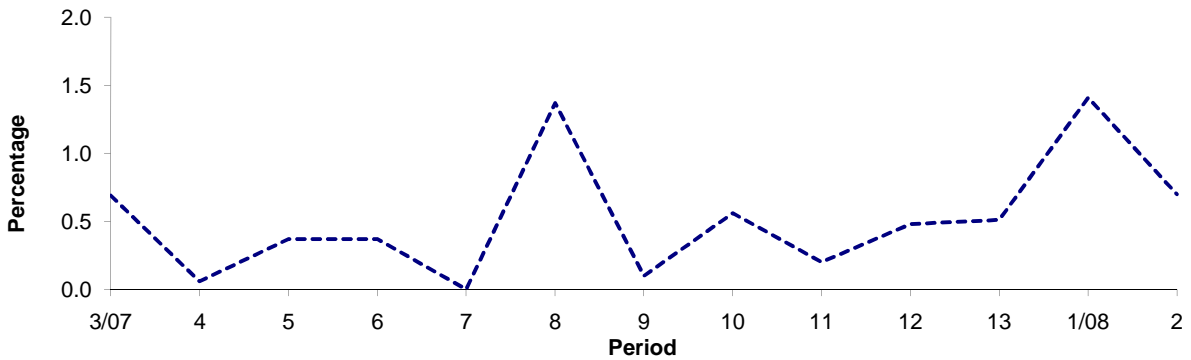
**Route N86**

**Mileage Operated**



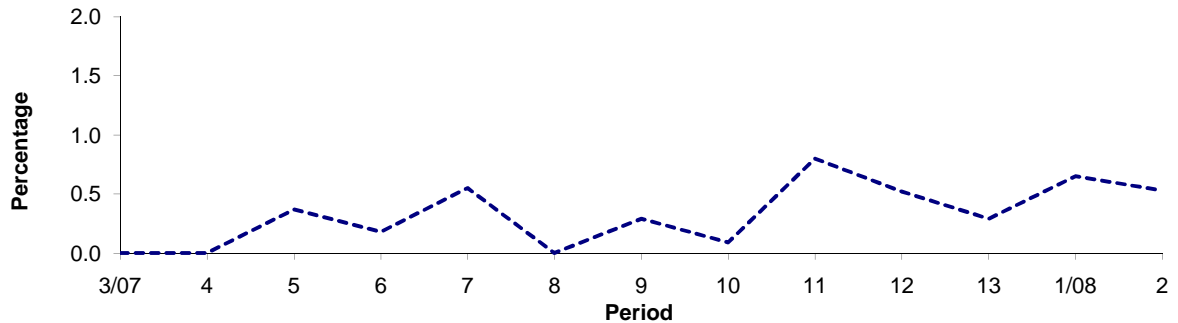
Period	3/07	4	5	6	7	8	9	10	11	12	13	1/08	2
2007/2008	99.31	99.94	99.26	99.45	99.45	98.63	99.61	99.35	99.00	99.00	99.20	97.94	98.77
Min Standard	98.00	98.00	98.00	98.00	98.00	98.00	98.00	98.00	98.00	98.00	98.00	98.00	98.00

**Deductible Mileage**



Period	3/07	4	5	6	7	8	9	10	11	12	13	1/08	2
2007/2008	0.69	0.06	0.37	0.37	0.00	1.37	0.10	0.56	0.20	0.48	0.51	1.41	0.70

**Non Deductible Mileage**

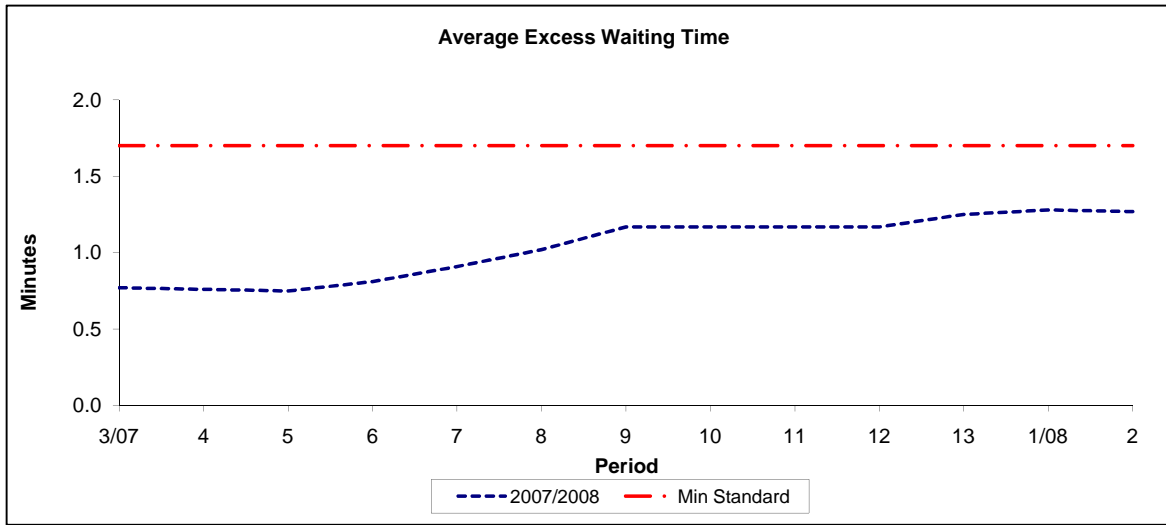


Period	3/07	4	5	6	7	8	9	10	11	12	13	1/08	2
2007/2008	0.00	0.00	0.37	0.18	0.55	0.00	0.29	0.09	0.80	0.52	0.29	0.65	0.53

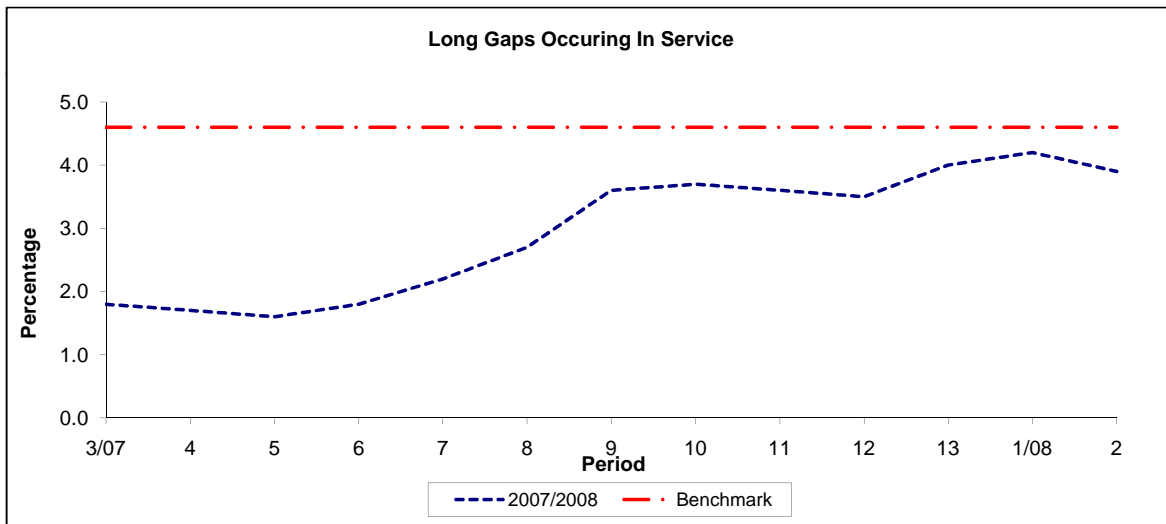
**Note :** Mileage is based on 4 weeks data

**PART B - PERFORMANCE STATISTICS**

**Route 86**



Period	3/07	4	5	6	7	8	9	10	11	12	13	1/08	2
2007/2008	0.77	0.76	0.75	0.81	0.91	1.02	1.17	1.17	1.17	1.17	1.25	1.28	1.27
Min Standard	1.70	1.70	1.70	1.70	1.70	1.70	1.70	1.70	1.70	1.70	1.70	1.70	1.70

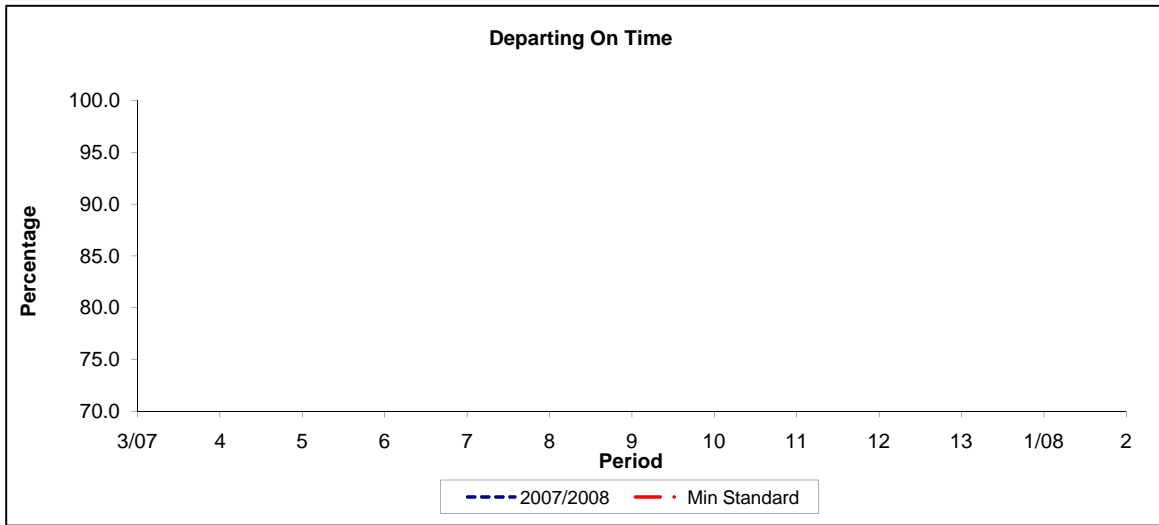


Period	3/07	4	5	6	7	8	9	10	11	12	13	1/08	2
2007/2008	1.80	1.70	1.60	1.80	2.20	2.70	3.60	3.70	3.60	3.50	4.00	4.20	3.90
Benchmark	4.60	4.60	4.60	4.60	4.60	4.60	4.60	4.60	4.60	4.60	4.60	4.60	4.60

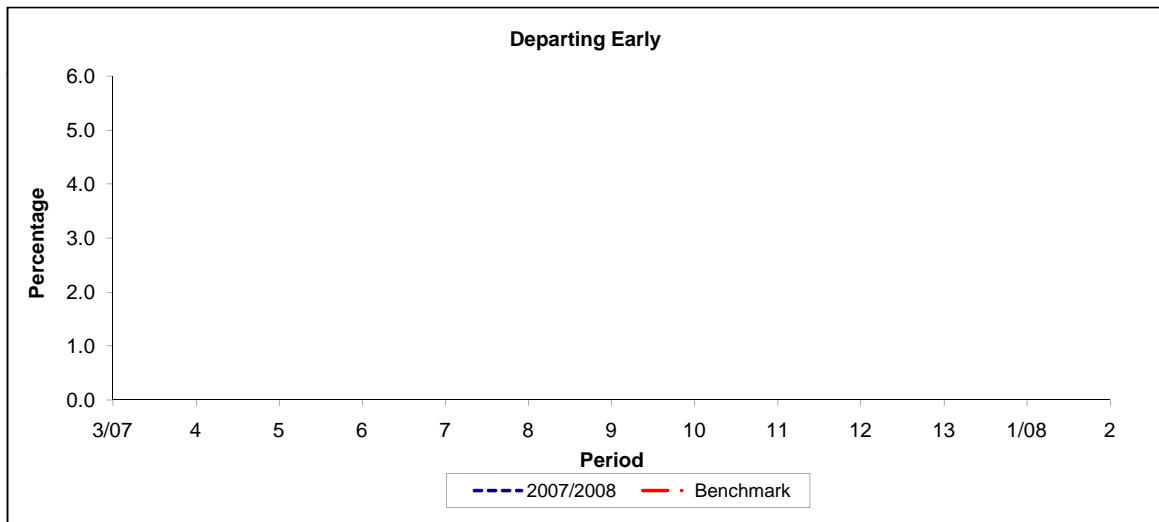
**Note :** Reliability is based on 12 weeks rolling data

**PART B - PERFORMANCE STATISTICS**

**Route N86**



Period	3/07	4	5	6	7	8	9	10	11	12	13	1/08	2
2007/2008													
Min Standard													



Period	3/07	4	5	6	7	8	9	10	11	12	13	1/08	2
2007/2008													
Benchmark													

**Note :** No reliability data - night bus route outside central London