

7. Service Specification

Route: 283

QC43901

This Service Specification forms section 7 of the ITT and should be read in conjunction with the ITT document, Version 1 dated 29 September 2011.

You are formally invited to tender for the provision of the bus service detailed below and in accordance with this Service Specification. Tenderers must ensure that a Compliant Tender is submitted and this will only be considered for evaluation if all parts of the Tender documents, as set out in section 11, have been received by the Corporation by the Date of Tender. The Tender must be fully completed in the required format, in accordance with the Instructions to Tenderers. A Compliant Tender must comply fully with the requirements of the Framework Agreement; adhere to the requirements of the Service Specification; and reflect the price of operating the Services with new vehicles.

Terminus Points	East Acton, Brunel Road to Barnes Pond / Barnes, Wetland Centre
Contract Basis	Incentivised
Commencement Date	1 st March 2014
Vehicle Type	55 capacity, dual door, single deck, minimum 10.2m long. Larger buses are not acceptable due to highway constraints (see Section 4 for further details)
Current Maximum Approved Dimensions	10.4 metres long and 2.51metres wide
New Vehicles Mandatory	Yes
Hybrid Price Required	Yes
Sponsored Route	No
Advertising Rights	Operator
Minimum Performance Standard	Average Excess Wait Time - No more than 1.20 minutes
Extension Threshold	Average Excess Wait Time Threshold - 1.05 minutes
Minimum Operated Mileage Standard	No less than 98.00%

The Date of Tender for this ITT is:

No later than 12 Noon on Monday 18th March 2013

Tenderers should refer to section 3 of Part A for the Service Specification Explanatory Notes and Appendix B of section 5 for the Example Service Specification of the ITT document.

SERVICE SPECIFICATION

- 1) SERVICE SPEC - ROUTE SPECIFICATION INFORMATION
- 2) NOTES
- 3) SCHEDULE REQUIREMENTS & PINCHPOINTS
- 4) OPERATIONAL CONSIDERATIONS
- 5) ROUTE RECORD, CURRENT PERFORMANCE, QSI BY TIME OF DAY, IBUS MILEAGE & QSI POINTS

2) NOTES

Proposed Changes:

At this time, the Corporation expects to implement a change to the existing service prior to the commencement of the new Route Agreement for Route No. 283.

- Buses towards Barnes on Route No. 283 will be diverted from normal line of route from 26 February 2013. This is due to a temporary closure of the Uxbridge Road slip road in Shepherd's Bush Green, for gas main replacement works. Buses towards East Acton are unaffected and will remain on normal line of route. This diversion is expected to last until 23 April 2013.
- Tenderers should refer to the schedules date 27/10/2012 rather than the emergency schedules.

Tenderers should note that the following alterations (subject to consultation) are proposed as part of this Service Specification for introduction with the new Route Agreement:

- **Tenderers should note that it is anticipated that the current DfT BSOG claims process will be discontinued for London contracts from 5th October 2013. Tender prices should therefore reflect this, however please continue to separately identify the fuel cost should the current BSOG process continue to apply after that date.**

- The Boxing Day service should match the Sunday service.
- **Tenderers must identify the cost of the Boxing Day element of this service separately.**

3) SCHEDULE REQUIREMENTS & PINCHPOINTS

3.1) MONDAY TO FRIDAY SCHEDULE REQUIREMENTS & PINCHPOINTS

East Acton, Brunel Road to Barnes Pond / Barnes, Wetland Centre (* see note)			Barnes Pond / Barnes, Wetland Centre to East Acton, Brunel Road (\$ see note)		
First departure no later than 0525.			First departure no later than 0545.		
0520 - 0625	Every 15 minutes		0540 - 0630	Every 15 minutes	
0626 - 0645	Every 10 minutes		0631 - 0650	Every 10 minutes	
0646 - 1850	Every 8 minutes (* see note)		0651 - 1850	Every 8 minutes (\$ see note)	
1851 - 1930	Every 10 minutes		1851 - 1930	Every 10 minutes	
1931 - 2400	Every 12 minutes		1931 - 2400	Every 12 minutes	
Last departure no earlier than 2355.			Last departure no earlier than 2355.		
Pinchpoints					
Hammersmith Bus Station	0730 - 0855	8 minutes	Shepherds Bush Green, West Side	0705 - 0905	8 minutes
	1500 - 1650	8 minutes		1505 - 1635	8 minutes

*** Note** - Buses on Route No. 283 should serve Barnes, Wetland Centre arriving from 09:31 to 18:12 hours during British Summer Time and 09:31 to 17:08 hours during the rest of the year. Outside of these hours, buses terminate at Barnes Pond.

\$ Note - Buses on Route No. 283 should serve the Wetland Centre departing from 09:31 to 18:12 hours during British Summer Time and about 09:31 to 17:08 hours during the rest of the year. Outside of these hours, buses commence from Barnes Pond.

3) SCHEDULE REQUIREMENTS & PINCHPOINTS - continued

3.2) SATURDAY AND GOOD FRIDAY SCHEDULE REQUIREMENTS & PINCHPOINTS

East Acton, Brunel Road to Barnes Pond / Barnes, Wetland Centre (* see note)			Barnes Pond / Barnes, Wetland Centre to East Acton, Brunel Road (\$ see note)		
First departure no later than 0525.			First departure no later than 0545.		
0520 - 0745	Every 20 minutes		0540 - 0745	Every 20 minutes	
0746 - 0830	Every 15 minutes		0746 - 0830	Every 15 minutes	
0831 - 0930	Every 10 minutes (* see note)		0831 - 0940	Every 10 minutes (\$ see note)	
0931 - 1825	Every 8 minutes		0941 - 1825	Every 8 minutes	
1826 - 1905	Every 10 minutes		1826 - 1905	Every 10 minutes	
1906 - 2400	Every 12 minutes		1906 - 2400	Every 12 minutes	
Last departure no earlier than 2355.			Last departure no earlier than 2355.		
Pinchpoints					
Hammersmith Bus Station	0930 - 1010	10 minutes	Shepherds Bush Green, West Side	0925 - 0955	10 minutes
	1011 - 1130	8 minutes		0956 - 1135	8 minutes

* **Note** - Buses on Route No. 283 should serve Barnes, Wetland Centre arriving from about 09:31 to 18:12 hours during British Summer Time and 09:31 to 17:08 hours during the rest of the year. Outside of these hours, buses terminate at Barnes Pond.

\$ **Note** - Buses on Route No. 283 should serve the Wetland Centre departing from about 09:31 to 18:12 hours during British Summer Time and 09:31 to 17:08 hours during the rest of the year. Outside of these hours, buses commence from Barnes Pond.

3) SCHEDULE REQUIREMENTS & PINCHPOINTS - continued

3.3) SUNDAY AND PUBLIC HOLIDAY SCHEDULE REQUIREMENTS & PINCHPOINTS

East Acton, Brunel Road to Barnes Pond / Barnes, Wetland Centre (* see note)			Barnes Pond / Barnes, Wetland Centre to East Acton, Brunel Road (\$ see note)		
First departure no later than 0630.			First departure no later than 0650.		
0625 - 0830	Every 20 minutes		0645 - 0830	Every 20 minutes	
0831 - 0930	Every 15 minutes		0831 - 0930	Every 15 minutes	
0931 - 2400	Every 12 minutes (* see note)		0931 - 2400	Every 12 minutes (\$ see note)	
Last departure no earlier than 2355.			Last departure no earlier than 2355.		
Pinchpoints					
Hammersmith Bus Station	1030 - 1230	12 minutes	Shepherds Bush Green, West Side	1035 - 1235	12 minutes

*** Note** - Buses on Route No. 283 should serve Barnes, Wetland Centre arriving from about 09:31 to 18:12 hours during British Summer Time and 09:31 to 17:08 hours during the rest of the year. Outside of these hours, buses terminate at Barnes Pond.

\$ Note - Buses on Route No. 283 should serve the Wetland Centre departing from about 09:31 to 18:12 hours during British Summer Time and 09:31 to 17:08 hours during the rest of the year. Outside of these hours, buses commence from Barnes Pond.

Tenderers must identify the cost of the Boxing Day element of this service separately.

4) OPERATIONAL CONSIDERATIONS

- 4.1) Route No. 283 should be separated, where possible, from Route No. 72 between East Acton, Brunel Road and Hammersmith Hospital during all periods on all days.
- 4.2) Route No. 283 can suffer unpredictable traffic delays in the Shepherds Bush and Hammersmith areas.
- 4.3) During football matches at Queens Park Rangers F.C, the roads surrounding the stadium (principally South Africa Road) may be subject to closure by the Metropolitan Police. The successful Tenderer will be advised of the relevant local contacts for both London Buses' Network Operations and the Metropolitan Police.
- 4.4) **Smaller buses are used on the route due to a weight restriction on Hammersmith Bridge of 11 tonnes (gross vehicle weight) for buses. This precludes the use of large single deck and all double deck buses over this bridge at any time.**

5) ROUTE RECORD, CURRENT PERFORMANCE, QSI BY TIME OF DAY, IBUS MILEAGE & QSI POINTS

- 5.1) ROUTE RECORD
As per Busnet Printout.
- 5.2) CURRENT PERFORMANCE
As per current print out.
- 5.3) QSI BY TIME OF DAY
As per current print out.
- 5.4) IBUS MILEAGE & QSI POINTS
As per current print out.

LONDON BUSES - ROUTE DESCRIPTION

ROUTE 283: East Acton, Brunel Road - Barnes Pond

Date of Structural Change: 1 March 2014.

Date of Service Change: 1 March 2014.

Reason for Issue: New Tender.

STREETS TRAVERSED

Towards Barnes Pond: Brunel Road, Old Oak Common Lane, Du Cane Road, Wood Lane, Westway (A40), Bloemfontein Road, Uxbridge Road, Shepherd's Bush Green (South Side), Shepherd's Bush Road, Hammersmith Bus Station Northern Entrance Ramp, Hammersmith Bus Station Low Level, Butterwick, Talgarth Road, Queen Caroline Street, Hammersmith Bridge Road, Hammersmith Bridge, Castelnau, Church Road.

Special Journey towards Barnes, Wetland Centre:

operate from Castelnau, then via Queen Elizabeth Walk, Wetland Centre Entrance to Wetland Centre Roundabout.

Towards East Acton, Brunel Road: Church Road, Castelnau, Hammersmith Bridge, Hammersmith Bridge Road, Queen Caroline Street, Hammersmith Broadway, Hammersmith Bus Station Northern Entrance Ramp, Hammersmith Bus Station High Level, Talgarth Road, Queen Caroline Street, Hammersmith Broadway, Shepherd's Bush Road, Shepherd's Bush Green (West Side), Uxbridge Road, Wormholt Road, Bryony Road, Bloemfontein Road, South Africa Road, Wood Lane, Du Cane Road, Old Oak Common Lane, Brunel Road, Telford Way, Brunel Road.

Special Journey from Barnes, Wetland Centre:

operate from Wetland Centre Roundabout, then via Wetland Centre Entrance, Queen Elizabeth Walk to Castelnau.

AUTHORISED STANDS, CURTAILMENT POINTS, & BLIND DESCRIPTIONS

Please note that only stands, curtailment points, & blind descriptions as detailed in this contractual document may be used.

EAST ACTON, BRUNEL ROAD

Public stand in two portions for six buses on the north side of Brunel Road, commencing two metres from the junction with Old Oak Common Lane and extending 60 metres to the eastern junction with Telford Way.

Buses proceed from Brunel Road direct to stand, departing to Brunel Road. Set down in Brunel Road, at Alighting Point X2 (BP2422 - East Acton Industrial Estate and pick up in Brunel Road, at Stop O (26194 - Brunel Road, First Stop on LOR: 26194 - Brunel Road).

AVAILABILITY:	At any time.
OPERATING RESTRICTIONS:	No more than 2 buses on Route 283 should be scheduled to stand at any one time.
MEAL RELIEFS:	No meal relief vehicles to stand at any time.
FERRY VEHICLES:	No ferry vehicles to park on stand at any time.
BLIND DISPLAY:	East Acton.
OTHER INFORMATION:	LBSL toilet facilities available 24 hours.

WOOD LANE, NORTH POLE ROAD (from BARNES POND)

Buses proceed from Wood Lane via North Pole Road, St Quintin Gardens and North Pole Road departing to Wood Lane. Set down {Not Specified}, E (8908 - Cavell House and pick up {Not Specified}, F (8907 - Cavell House, First Stop on LOR: 25694 - White City Estate).

AVAILABILITY:	At any time.
OPERATING RESTRICTIONS:	Turning Point Only - Buses must not stand
BLIND DISPLAY:	North Pole Road.

WHITE CITY, LEISURE CENTRE (from BARNES POND)

Buses proceed from Bloemfontein Road departing to Bloemfontein Road. Set down in Bloemfontein Road, at Stop LN (36741 - Janet Adegoke Leisure Centre, Last Stop on LOR: 36741 - Janet Adegoke Leisure Centre) and pick up in Bloemfontein Road, at Stop LN (36741 - Janet Adegoke Leisure Centre, First Stop on LOR: 36741 - Janet Adegoke Leisure Centre).

AVAILABILITY:	At any time.
OPERATING RESTRICTIONS:	Turning Point Only - Buses must not stand
BLIND DISPLAY:	White City, Leisure Centre.

SHEPHERDS BUSH GREEN, WEST SIDE

Public stand for two buses on west side of Shepherd's Bush Green prior to Stop S outside bingo hall.

From Barnes Pond.

Buses proceed from Shepherd's Bush Road via Shepherd's Bush Green (West Side) to stand, departing via Shepherd's Bush Green (West Side) to Uxbridge Road. Set down in Shepherd's Bush Road, at Stop P (842 - Goldhawk Road, Last Stop on LOR: 842 - Goldhawk Road) and pick up in Uxbridge Road, at Stop E (24294 - Shepherds Bush Green, First Stop on LOR: 24294 - Shepherds Bush Green).

From East Acton, Brunel Road.

Buses proceed from Uxbridge Road via Shepherd's Bush Green (South Side) and Shepherd's Bush Green (West Side) to stand, departing to Shepherd's Bush Green (West Side). Set down in Uxbridge Road, at Stop E (24294 - Shepherds Bush Green, Last Stop on LOR: 24294 - Shepherds Bush Green) and pick up in Shepherd's Bush Green (west Side), at Stop T (35052 - Shepherds Bush Green, First Stop on LOR: 35052 - Shepherds Bush Green).

AVAILABILITY:	At any time.
OPERATING RESTRICTIONS:	Unscheduled curtailments only
MEAL RELIEFS:	No meal relief vehicles to stand at any time.
FERRY VEHICLES:	No ferry vehicles to park on stand at any time.
BLIND DISPLAY:	Shepherd's Bush.

HAMMERSMITH, BROOK GREEN (from BARNES POND)

Public stand for six buses in Shepherd's Bush Road (west and north arms), commencing opposite a point 20 metres east of the centre of Barb Mews and extending 70 metres west and south.

Buses proceed from Shepherd's Bush Road direct to stand, departing to Shepherd's Bush Road. Set down in Shepherd's Bush Road, at Stop V (679 - Hammersmith Library, Last Stop on LOR: 679 - Hammersmith Library) and pick up in Shepherd's Bush Road, at Stop B (8995 - Brook Green, First Stop on LOR: 8995 - Brook Green).

AVAILABILITY:	At any time.
OPERATING RESTRICTIONS:	Unscheduled curtailments only.
MEAL RELIEFS:	No meal relief vehicles to stand at any time.
FERRY VEHICLES:	No ferry vehicles to park on stand at any time.
BLIND DISPLAY:	Brook Green.

HAMMERSMITH BUS STATION

From Barnes Pond.

Buses proceed from Hammersmith Bus Station High Level via Talgarth Road, Queen Caroline Street, Hammersmith Broadway and Hammersmith Bus Station Northern Entrance Ramp departing to Hammersmith Bus Station Low Level. Set down in Hammersmith Bus Station High Level, at Stop Z1 (R0874 - Hammersmith Bus Station, Last Stop on LOR: 29576 - Hammersmith Bridge Road) and pick up in Hammersmith Bus Station Low Level, at Stop K (BP5005 - Hammersmith Bus Station, First Stop on LOR: BP5005 - Hammersmith Bus Station).

From East Acton, Brunel Road.

Buses proceed from Hammersmith Bus Station Low Level via Butterwick and Talgarth Road departing to Hammersmith Bus Station High Level. Set down in Hammersmith Bus Station Low Level, at Stop K (BP5005 - Hammersmith Bus Station, Last Stop on LOR: BP5005 - Hammersmith Bus Station) and pick up in Hammersmith Bus Station High Level, at Stop A (R0875 - Hammersmith Bus Station, First Stop on LOR: R0875 - Hammersmith Bus Station).

AVAILABILITY: At any time.
OPERATING RESTRICTIONS: **Turning Point Only - Buses must not stand**
BLIND DISPLAY: Hammersmith.

HAMMERSMITH BRIDGE, NORTH SIDE (from East Acton, Brunel Road)

Public stand for one bus in bay on south side of Hammersmith Bridge Road, commencing 28 metres east of the forward end of the straight section of the bay and extending 11 metres east.

Buses proceed from Hammersmith Bridge Road direct to stand, departing to Hammersmith Bridge Road (circumnavigate roundabout under Hammersmith Flyover). Set down in Hammersmith Bridge Road, at Stop K (29954 - Hammersmith Bridge Road, Last Stop on LOR: 29954 - Hammersmith Bridge Road) and pick up in Hammersmith Bridge Road, at Stop M (29576 - Hammersmith Bridge Road, First Stop on LOR: 29576 - Hammersmith Bridge Road).

AVAILABILITY: At any time.
OPERATING RESTRICTIONS: Unscheduled curtailments only.
MEAL RELIEFS: No meal relief vehicles to stand at any time.
FERRY VEHICLES: No ferry vehicles to park on stand at any time.
BLIND DISPLAY: Hammersmith Bridge, North Side.

BARNES, WETLAND CENTRE (from East Acton, Brunel Road)

Public stand for one bus on west side of turning circle, 54 metres north of Queen Elizabeth Walk within second entrance of Wetland Centre.

Buses proceed from Wetland Centre Roundabout direct to stand, departing to Wetland Centre Roundabout. Set down in Wetland Centre Roundabout, at Stop WL (BP2611 - The Wetlands Centre, Last Stop on LOR: BP2611 - The Wetlands Centre) and pick up in Wetland Centre Roundabout, at Stop WL (BP2611 - The Wetlands Centre, First Stop on LOR: BP2611 - The Wetlands Centre).

AVAILABILITY:	At any time.
OPERATING RESTRICTIONS:	No more than 2 buses on Route 283 should be scheduled to stand at any one time.
MEAL RELIEFS:	No meal relief vehicles to stand at any time.
FERRY VEHICLES:	No ferry vehicles to park on stand at any time.
BLIND DISPLAY:	Barnes, Wetland Centre.
OTHER INFORMATION:	Toilet facilities available 0930-1800 daily.

BARNES POND

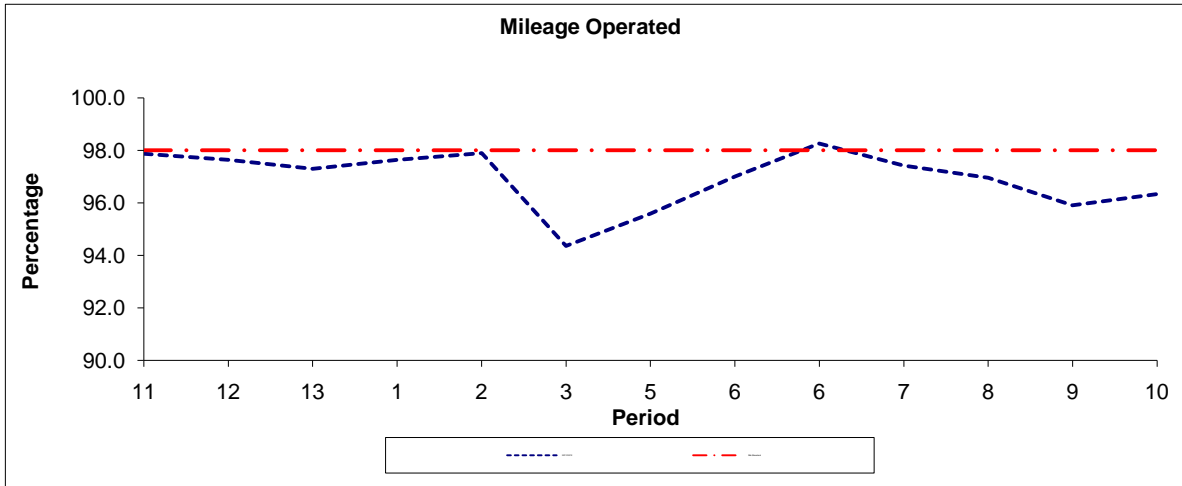
Public stand for two buses on south side of Church Road, Barnes, commencing opposite party wall of 21/23 Church Road extending 20 metres east.

Buses proceed from Church Road direct to stand, departing via Church Road and Circumnavigate Traffic Island At Junction With Station Road to Church Road. Set down in Church Road, at Stop BC (BP1926 - Barnes Pond, Last Stop on LOR: BP1926 - Barnes Pond) and pick up in Church Road, at Stop BF (15247 - Barnes Pond, First Stop on LOR: 15247 - Barnes Pond).

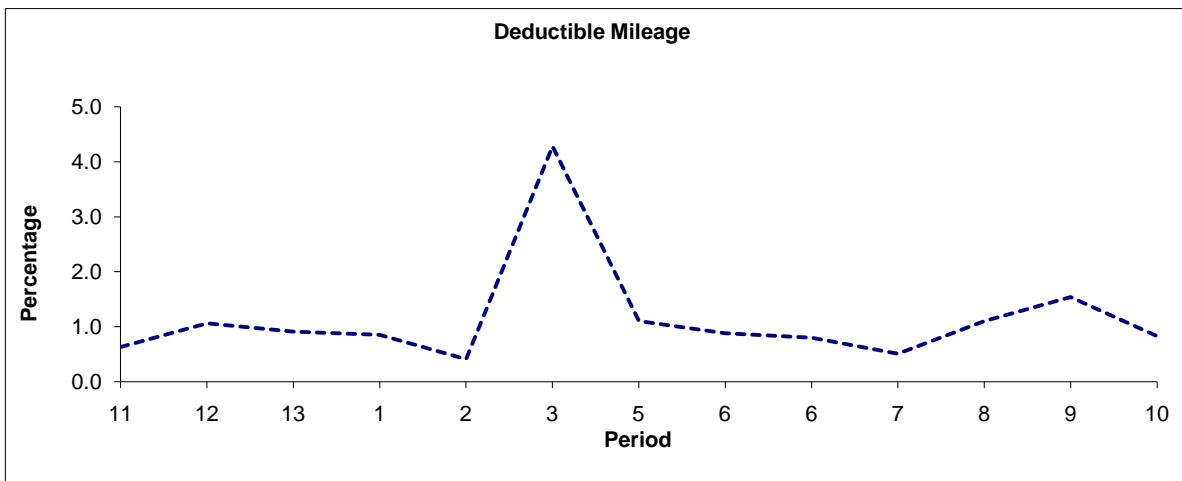
AVAILABILITY:	At any time.
OPERATING RESTRICTIONS:	No more than 2 buses on Route 283 should be scheduled to stand at any one time.
MEAL RELIEFS:	No meal relief vehicles to stand at any time.
FERRY VEHICLES:	No ferry vehicles to park on stand at any time.
BLIND DISPLAY:	Barnes Pond.
OTHER INFORMATION:	No toilet facilities available.

PART B - PERFORMANCE STATISTICS

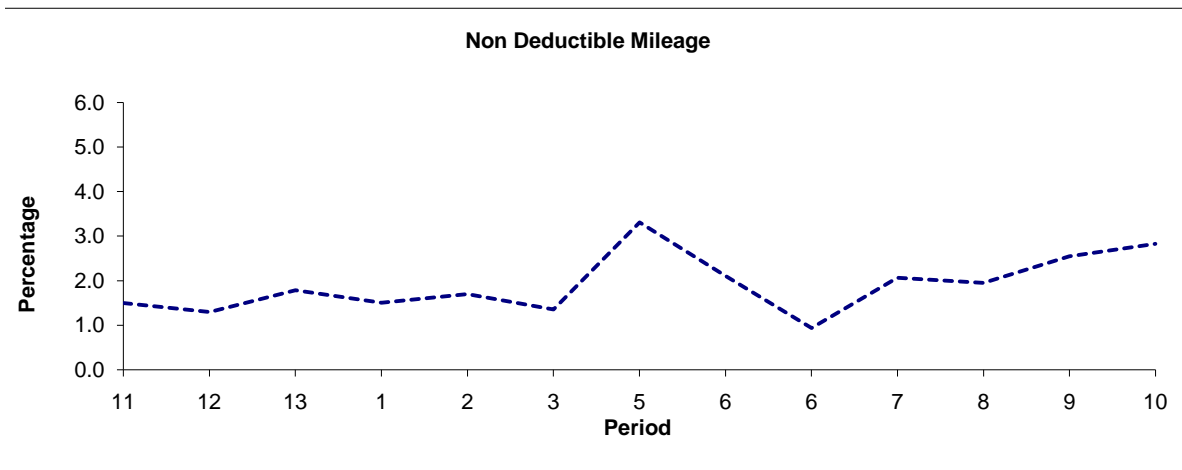
Route 283



Period	11	12	13	1	2	3	5	6	6	7	8	9	10
2011/2012	97.87	97.64	97.30	97.64	97.89	94.36	95.59	97.01	98.26	97.42	96.95	95.91	96.34
Min Standard	98.00	98.00	98.00	98.00	98.00	98.00	98.00	98.00	98.00	98.00	98.00	98.00	98.00



Period	11	12	13	1	2	3	5	6	6	7	8	9	10
2011/2012	0.63	1.06	0.91	0.85	0.41	4.28	1.10	0.88	0.80	0.51	1.10	1.54	0.83

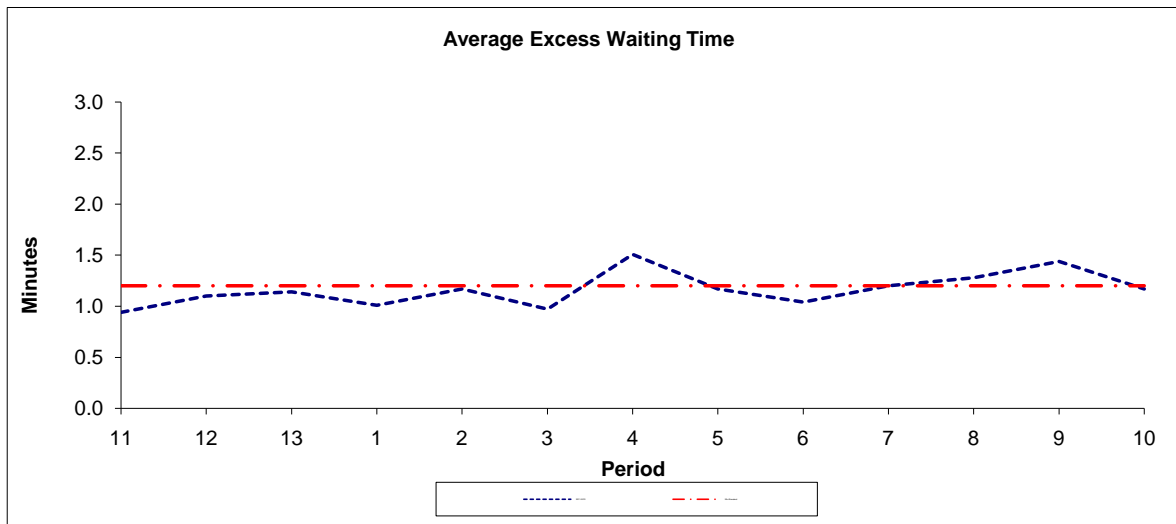


Period	11	12	13	1	2	3	5	6	6	7	8	9	10
2011/2012	1.50	1.30	1.79	1.51	1.70	1.36	3.31	2.11	0.94	2.07	1.95	2.55	2.83

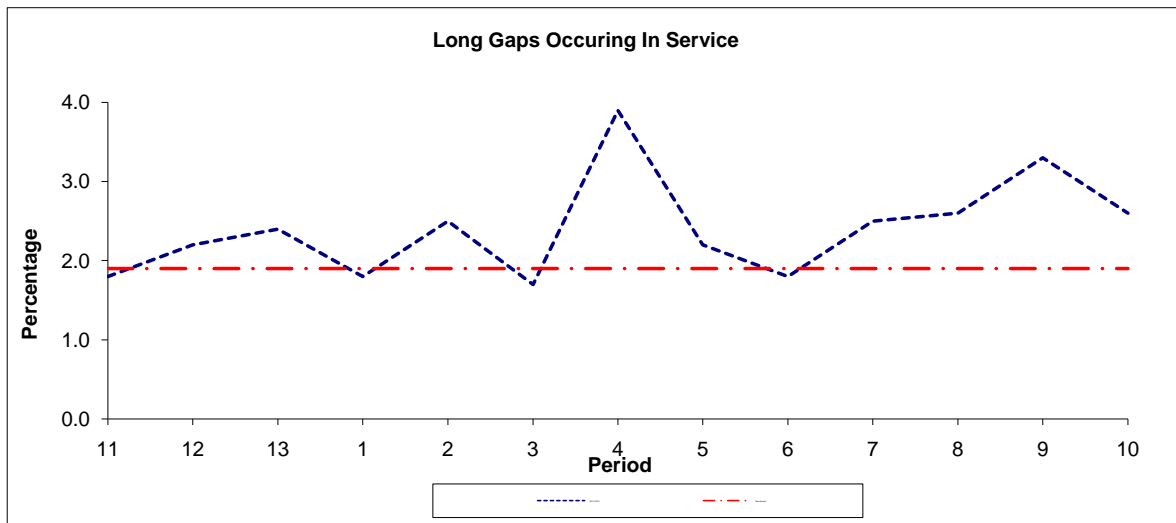
Note : Mileage is based on 4 weeks data
 Performance affected by industrial action in p3 2012/13.

PART B - PERFORMANCE STATISTICS

Route 283



Period	11	12	13	1	2	3	4	5	6	7	8	9	10
2011-2012	0.94	1.10	1.14	1.01	1.17	0.97	1.51	1.17	1.04	1.20	1.28	1.44	1.17
Min Standard	1.20	1.20	1.20	1.20	1.20	1.20	1.20	1.20	1.20	1.20	1.20	1.20	1.20



Period	11	12	13	1	2	3	4	5	6	7	8	9	10
2011-2012	1.80	2.20	2.40	1.80	2.50	1.70	3.90	2.20	1.80	2.50	2.60	3.30	2.60
Benchmark	1.90	1.90	1.90	1.90	1.90	1.90	1.90	1.90	1.90	1.90	1.90	1.90	1.90

Note : Reliability is actual performance under full iBus (4 weeks data).
 Minimum Standards and Benchmarks are those applicable under the new contract.

ROUTE 283 - FULL iBUS RESULTS BY TIME OF DAY
QUARTER 4 11/12 TO QUARTER 3 12/13 (07/01/12 - 04/01/13)

MONDAY - FRIDAY

Time Period	Expected Buses	On AVL (%)	Scheduled Waiting Time (SWT) (mins)	Excess Waiting Time (EWT) (mins)	Actual Waiting Time (AWT) (mins)	Probability of Waiting < 10 mins (%)	Probability of Waiting 10-20 mins (%)	Probability of Waiting 20-30 mins (%)	Probability of Waiting > 30 mins (%)	Long Gaps (%)	Maximum Gap (mins)
0500 - 0700	24,978.	95.4	6.03	0.48	6.51	86.5	13.0	0.4	0.1	0.8	79
0700 - 1000	84,670.	98.7	3.78	0.92	4.70	91.4	8.2	0.3	0.0	1.5	57
1000 - 1300	77,449.	100.1	4.00	0.86	4.86	90.8	8.9	0.3	0.0	1.1	43
1300 - 1600	75,717.	99.5	3.99	1.10	5.09	88.4	10.8	0.7	0.1	2.2	64
1600 - 1900	77,016.	93.5	3.96	1.92	5.88	82.4	15.1	2.1	0.4	5.5	86
1900 - 2200	57,959.	97.0	5.35	1.54	6.89	75.8	20.7	2.7	0.8	3.2	79
2200 - 2400	34,350.	101.1	5.95	0.59	6.55	79.5	19.7	0.7	0.1	0.3	52
Summary	432,139.	97.9	4.25	1.23	5.48	86.1	12.6	1.1	0.2	2.7	86

SATURDAY

Time Period	Expected Buses	On AVL (%)	Scheduled Waiting Time (SWT) (mins)	Excess Waiting Time (EWT) (mins)	Actual Waiting Time (AWT) (mins)	Probability of Waiting < 10 mins (%)	Probability of Waiting 10-20 mins (%)	Probability of Waiting 20-30 mins (%)	Probability of Waiting > 30 mins (%)	Long Gaps (%)	Maximum Gap (mins)
0500 - 0700	2,784.	99.2	10.01	0.25	10.26	60.5	34.6	4.5	0.4	2.1	43
0700 - 1000	12,915.	98.7	5.47	0.62	6.09	84.0	15.3	0.6	0.0	0.3	72
1000 - 1300	16,646.	97.8	4.00	0.94	4.94	90.1	9.3	0.5	0.1	1.6	39
1300 - 1600	15,787.	98.7	4.01	1.29	5.30	87.3	11.3	1.0	0.3	3.0	51
1600 - 1900	15,779.	96.2	4.01	1.48	5.48	85.1	13.3	1.4	0.3	3.8	49
1900 - 2200	11,598.	97.4	5.77	1.42	7.19	74.2	22.4	2.7	0.7	2.1	62
2200 - 2400	7,470.	99.1	5.95	0.82	6.77	77.5	21.0	1.3	0.3	0.8	46
Summary	82,979.	97.9	4.64	1.13	5.77	84.4	14.1	1.2	0.3	2.3	72

SUNDAY AND BANK HOLIDAYS

Time Period	Expected Buses	On AVL (%)	Scheduled Waiting Time (SWT) (mins)	Excess Waiting Time (EWT) (mins)	Actual Waiting Time (AWT) (mins)	Probability of Waiting < 10 mins (%)	Probability of Waiting 10-20 mins (%)	Probability of Waiting 20-30 mins (%)	Probability of Waiting > 30 mins (%)	Long Gaps (%)	Maximum Gap (mins)
0500 - 0700	852.	98.5	10.00	0.03	10.03	79.8	17.6	2.2	0.4	7.2	42
0700 - 1000	9,855.	98.2	7.71	0.45	8.17	68.6	28.7	2.3	0.3	0.1	86
1000 - 1300	12,416.	100.4	5.86	0.64	6.49	79.0	19.9	0.9	0.2	0.5	76
1300 - 1600	12,675.	101.4	5.86	0.67	6.53	78.6	20.4	1.0	0.1	0.4	43
1600 - 1900	12,306.	97.9	5.84	0.85	6.69	77.1	21.2	1.5	0.2	0.7	91
1900 - 2200	12,938.	101.0	5.88	0.84	6.73	77.4	21.1	1.4	0.1	0.6	49
2200 - 2400	8,440.	100.2	6.00	0.46	6.45	80.2	19.2	0.5	0.1	0.2	49
Summary	69,482.	99.9	6.09	0.69	6.78	77.3	21.2	1.3	0.2	0.6	91

ALL DAYS

Time Period	Expected Buses	On AVL (%)	Scheduled Waiting Time (SWT) (mins)	Excess Waiting Time (EWT) (mins)	Actual Waiting Time (AWT) (mins)	Probability of Waiting < 10 mins (%)	Probability of Waiting 10-20 mins (%)	Probability of Waiting 20-30 mins (%)	Probability of Waiting > 30 mins (%)	Long Gaps (%)	Maximum Gap (mins)
0500 - 0700	28,614.	95.8	6.64	0.43	7.07	83.3	15.7	1.0	0.1	1.2	79
0700 - 1000	107,440.	98.6	4.12	0.87	4.99	89.6	9.9	0.4	0.1	1.3	86
1000 - 1300	106,511.	99.8	4.22	0.85	5.07	89.3	10.3	0.4	0.1	1.1	76
1300 - 1600	104,179.	99.6	4.20	1.08	5.27	87.2	11.9	0.8	0.1	2.1	64
1600 - 1900	105,101.	94.4	4.15	1.77	5.92	82.1	15.5	2.0	0.4	4.9	91
1900 - 2200	82,495.	97.7	5.46	1.44	6.91	75.8	21.0	2.6	0.7	2.8	79
2200 - 2400	50,260.	100.7	5.96	0.60	6.56	79.3	19.8	0.8	0.1	0.3	52
Summary	584,600.	98.2	4.47	1.17	5.64	85.0	13.6	1.1	0.2	2.4	91

Transport for London - QSI Points and Mileage

v2.0 - Mileage directly imported from Caesar

Route 283 (to/from Barnes Pond)

TRANCHE 439

Service change 32381

Date 27/10/2012

Reason for Issue

New contract from 01/03/2014

Version Detail

QSI Points are highlighted in blue.

OUT DIRECTION				
Timing Point Code	Stop Number	Stop Name	Metres	Miles
EACTBR S	EACTBR S	EAST ACTON, BRUNEL ROAD		
EACTBR	26194	Brunel Road**	0	0.00
QOOCMFW	20975	The Fairway**	175	0.11
	26503	East Acton Station / Erconwald Street	299	0.19
	11576	East Acton Station / Fitzneal Street	166	0.10
	11572	Wulfstan Street	405	0.25
HAMMHP	11568	Hammersmith Hospital	509	0.32
	11566	Lymer Upper School / Playing Field	462	0.29
	8907	Cavell House	142	0.09
	25694	White City Estate	577	0.36
	36737	Westway	283	0.18
BLRDLP	36741	Janet Adegoke Leisure Centre	297	0.18
	36736	Ellerslie Road	318	0.20
	848	Bloemfontein Road	265	0.16
	3029	Loftus Road	180	0.11
	3025	Shepherds Bush Market Station	332	0.21
SBGNUR	24294	Shepherds Bush Green	390	0.24
	24994	Shepherds Bush Station	215	0.13
SBGNSB	843	Goldhawk Road	309	0.19
	8895	Blythe Road	384	0.24
	8995	Brook Green	284	0.18
	14637	Hammersmith Library	307	0.19
HAMMBL	BP5005	Hammersmith Bus Station	235	0.15
	29954	Hammersmith Bridge Road	557	0.35
	BP3191	Hammersmith Bridge	209	0.13
LNDRCN	4609	Lonsdale Road	616	0.38
	15236	The Spinney	217	0.13
	986	Washington Road	415	0.26
	15239	Newport Road	324	0.20
BRNSRL	1468	Barnes / Red Lion	333	0.21
	15249	Glebe Road	284	0.18
BRNSPD	BP1926	Barnes Pond	187	0.12
	BRNSPD S	BARNES POND	0	0.00

TOTAL ROUTE MILEAGE - OUT DIRECTION 9676 metres 6.01 miles

BACK DIRECTION				
Timing Point Code	Stop Number	Stop Name	Metres	Miles
BRNSPD S	BRNSPD S	BARNES POND		
BRNSPD	15247	Barnes Pond	0	0.00
	15248	Glebe Road	301	0.19
BRNSRL	4606	Barnes / Red Lion	313	0.19
	15238	Newport Road	310	0.19
	987	Washington Road	320	0.20
	15237	The Spinney	300	0.19
LNDRCN	4608	Lonsdale Road	213	0.13
	29576	Hammersmith Bridge Road	982	0.61
HAMMBU	R0875	Hammersmith Bus Station	400	0.25
	679	Hammersmith Library	454	0.28
	3480	Brook Green	469	0.29
	8894	Blythe Road	327	0.20
SBGNSB	842	Goldhawk Road	222	0.14
SBGNWS	35052	Shepherds Bush Green	214	0.13
	3022	Shepherds Bush Market Station	309	0.19
	3030	Loftus Road	183	0.11
	849	Bloemfontein Road	247	0.15
	3032	Adelaide Grove	233	0.14
	14022	Galloway Road	174	0.11
	C91	Wormholt Road	386	0.24
	C88	Bryony Road	314	0.20
BLRDLP	36741	Janet Adegoke Leisure Centre	401	0.25
	C89	Shepherds Park Rangers Football Stadium	268	0.17
	C90	Mandela Close	320	0.20
	CW20	Westway	384	0.24
	8908	Cavell House	302	0.19
	11567	Lymer Upper School / Playing Field	243	0.15
HAMMHP	11569	Hammersmith Hospital	401	0.25
	11573	Wulfstan Street	634	0.39
	11577	East Acton Station	346	0.21
	26504	The Fairway	262	0.16
	20974	Long Drive	221	0.14
	BP2420	Brunel Road	281	0.17
	26505	Telford Way	174	0.11
EACTBR	BP2422	East Acton Industrial Estate	256	0.16
	EACTBR S	EAST ACTON, BRUNEL ROAD	0	0.00

TOTAL ROUTE MILEAGE - BACK DIRECTION 11164 metres 6.94 miles

Transport for London - QSI Points and Mileage

v2.0 - Mileage directly imported from Caesar

Route **283 (to/from Wetland Centre)**

TRANCHE 439

Service change 32381

Date 27/10/2012

Reason for Issue

New contract from 01/03/2014

Version Detail

QSI Points are highlighted in blue.

OUT DIRECTION				
Timing Point Code	Stop Number	Stop Name	Metres	Miles
EACTBR S	EACTBR S	EAST ACTON, BRUNEL ROAD		
EACTBR	26194	Brunel Road**	0	0.00
QOOCMFW	20975	The Fairway**	175	0.11
	26503	East Acton Station / Erconwald Street	299	0.19
	11576	East Acton Station / Fitzneal Street	166	0.10
	11572	Wulfstan Street	405	0.25
HAMMHP	11568	Hammersmith Hospital	509	0.32
	11566	Latymer Upper School / Playing Field	462	0.29
	8907	Cavell House	142	0.09
	25694	White City Estate	577	0.36
	36737	Westway	283	0.18
BLRDLP	36741	Janet Adegoke Leisure Centre	297	0.18
	36736	Ellerslie Road	318	0.20
	848	Bloemfontein Road	265	0.16
	3029	Loftus Road	180	0.11
	3025	Shepherds Bush Market Station	332	0.21
SBGNUR	24294	Shepherds Bush Green	390	0.24
	24994	Shepherds Bush Station	215	0.13
SBGNSB	843	Goldhawk Road	309	0.19
	8895	Blythe Road	384	0.24
	8995	Brook Green	284	0.18
	14637	Hammersmith Library	307	0.19
HAMMBL	BP5005	Hammersmith Bus Station	235	0.15
	29954	Hammersmith Bridge Road	557	0.35
	BP3191	Hammersmith Bridge	209	0.13
LNDRCN	4609	Lonsdale Road	616	0.38
	15236	The Spinney	217	0.13
	986	Washington Road	415	0.26
	15239	Newport Road	324	0.20
BRNSRLQ	BP2612	Queen Elizabeth Walk	310	0.19
BRNSWC	BP2611	The Wetlands Centre	268	0.17
BRNSWC S	BRNSWC S	BARNES, WETLAND CENTRE	0	0.00

TOTAL ROUTE MILEAGE - OUT DIRECTION 9450 metres 5.87 miles

BACK DIRECTION				
Timing Point Code	Stop Number	Stop Name	Metres	Miles
BRNSWC S	BRNSWC S	BARNES, WETLAND CENTRE		
BRNSWC	BP2611	The Wetlands Centre	0	0.00
BRNSRL	4606	Barnes / Red Lion	434	0.27
	15238	Newport Road	310	0.19
	987	Washington Road	320	0.20
	15237	The Spinney	300	0.19
LNDRCN	4608	Lonsdale Road	213	0.13
	29576	Hammersmith Bridge Road	982	0.61
HAMMBU	R0875	Hammersmith Bus Station	400	0.25
	679	Hammersmith Library	454	0.28
	3480	Brook Green	469	0.29
	8894	Blythe Road	327	0.20
SBGNSB	842	Goldhawk Road	222	0.14
SBGNWS	35052	Shepherds Bush Green	214	0.13
	3022	Shepherds Bush Market Station	309	0.19
	3030	Loftus Road	183	0.11
	849	Bloemfontein Road	247	0.15
	3032	Adelaide Grove	233	0.14
	14022	Galloway Road	174	0.11
	C91	Wormholt Road	386	0.24
	C88	Bryony Road	314	0.20
BLRDLP	36741	Janet Adegoke Leisure Centre	401	0.25
	C89	Queens Park Rangers Football Stadium	268	0.17
	C90	Mandela Close	320	0.20
	CW20	Westway	384	0.24
	8908	Cavell House	302	0.19
	11567	Latymer Upper School / Playing Fields	243	0.15
HAMMHP	11569	Hammersmith Hospital	401	0.25
	11573	Wulfstan Street	634	0.39
	11577	East Acton Station	346	0.21
	26504	The Fairway	262	0.16
	20974	Long Drive	221	0.14
	BP2420	Brunel Road	281	0.17
	26505	Telford Way	174	0.11
EACTBR	BP2422	East Acton Industrial Estate	256	0.16
EACTBR S		EAST ACTON, BRUNEL ROAD	0	0.00

TOTAL ROUTE MILEAGE - BACK DIRECTION 10984 metres 6.83 miles

** It is intended to replace the QSI point at Old Oak Common The Fairway with one at East Acton Brunel Road at a future date.