

7. Service Specification

Route: 391

QC43001

This Service Specification forms section 7 of the ITT and should be read in conjunction with the ITT document, Version 1 dated 29 September 2011.

You are formally invited to tender for the provision of the bus service detailed below and in accordance with this Service Specification. Tenderers must ensure that a Compliant Tender is submitted and this will only be considered for evaluation if all parts of the Tender documents, as set out in section 11, have been received by the Corporation by the Date of Tender. The Tender must be fully completed in the required format, in accordance with the Instructions to Tenderers. A Compliant Tender must comply fully with the requirements of the Framework Agreement; adhere to the requirements of the Service Specification; and reflect the price of operating the Services with new vehicles.

Terminus Points	Richmond to Sands End, Sainsburys (Fulham)
Contract Basis	Incentivised
Commencement Date	14 th December 2013
Vehicle Type	60 capacity, dual door, single deck, minimum 10.8m long, subject to a satisfactory route test
Current Maximum Approved Dimensions	10.3 metres long and 2.5 metres wide
New Vehicles Mandatory	Yes
Hybrid Price Required	No
Sponsored Route	No
Minimum Performance Standard	Average Excess Wait Time - No more than 1.40 minutes
Extension Threshold	Average Excess Wait Time Threshold -1.20 minutes
Advertising Rights	Operator
Minimum Operated Mileage Standard	No less than 98.00%

The Date of Tender for this ITT is: No later than 12 Noon on 14th January 2013

Tenderers should refer to section 3 of Part A for the Service Specification Explanatory Notes and Appendix B of section 5 for the Example Service Specification of the ITT document.

SERVICE SPECIFICATION

- 1) SERVICE SPEC - ROUTE SPECIFICATION INFORMATION
- 2) NOTES
- 3) SCHEDULE REQUIREMENTS & PINCHPOINTS
- 4) OPERATIONAL CONSIDERATIONS
- 5) ROUTE RECORD, CURRENT PERFORMANCE, QSI BY TIME OF DAY, IBUS MILEAGE & QSI POINTS

2) NOTES

Proposed Changes:

At this time, no changes are proposed to the existing service for introduction prior to the commencement of the new Route Agreement for Route No.391.

Tenderers should note that the following alterations (subject to consultation) are proposed as part of this Service Specification for introduction with the new Route Agreement:

- 60 capacity, dual door, single deck buses of a minimum of 10.8 metres long will be specified, subject to a satisfactory route test.
- The Boxing Day service should match the Sunday service.
- **Tenderers must identify the cost of the Boxing Day element of this service separately.**

3) SCHEDULE REQUIREMENTS & PINCHPOINTS

3.1) MONDAY TO FRIDAY SCHEDULE REQUIREMENTS & PINCHPOINTS

Richmond, George Street to Sands End, Sainsburys (Fulham)		Sands End, Sainsburys (Fulham) to Richmond, Bus Station			
First departure no later than 0535.		First departure no later than 0525.			
0530 - 0555	Every 20 minutes	0520 - 0625	Every 20 minutes		
0556 - 0610	Every 15 minutes	0626 - 0655	Every 15 minutes		
0611 - 2000	Every 10 minutes	0656 - 2015	Every 10 minutes		
2001 - 0030	Every 12 minutes	2016 - 2400	Every 12 minutes		
Last departure no earlier than 0025.		Last departure no earlier than 2355.			
Pinchpoints					
Hammersmith Bus Station, Upper Level	0710 - 0910	10 minutes	Kew Bridge Station	0720 - 0735	15 minutes
	1510 - 1650	10 minutes		0736 - 0905	10 minutes
				1505 - 1645	10 minutes

3.2) SATURDAY AND GOOD FRIDAY SCHEDULE REQUIREMENTS & PINCHPOINTS

Richmond, George Street to Sands End, Sainsburys (Fulham)		Sands End, Sainsburys (Fulham) to Richmond, Bus Station			
First departure no later than 0535.		First departure no later than 0525.			
0530 - 0635	Every 20 minutes	0520 - 0725	Every 20 minutes		
0636 - 0750	Every 15 minutes	0726 - 0855	Every 15 minutes		
0751 - 1910	Every 10 minutes	0856 - 2015	Every 10 minutes		
1911 - 0030	Every 12 minutes	2016 - 2400	Every 12 minutes		
Last departure no earlier than 0025.		Last departure no earlier than 2355.			
Pinchpoints					
Hammersmith Bus Station, Upper Level	0935 - 1105	10 minutes	Kew Bridge Station	0935 - 1105	10 minutes

3.3) SUNDAY AND PUBLIC HOLIDAY SCHEDULE REQUIREMENTS & PINCHPOINTS

Richmond, George Street to Sands End, Sainsburys (Fulham)		Sands End, Sainsburys (Fulham) to Richmond, Bus Station			
First departure no later than 0555.		First departure no later than 0540.			
0550 - 0755	Every 30 minutes	0535 - 0840	Every 30 minutes		
0756 - 0855	Every 20 minutes	0841 - 0920	Every 20 minutes		
0856 - 0030	Every 12 minutes	0921 - 2400	Every 12 minutes		
Last departure no earlier than 0025.		Last departure no earlier than 2355.			
Pinchpoints					
Hammersmith Bus Station, Upper Level	1025 - 1125	12 minutes	Kew Bridge Station	1035 - 1135	12 minutes

Tenderers must identify the cost of the Boxing Day element of this service separately.

4) OPERATIONAL CONSIDERATIONS

- 4.1) Route No. 391 can suffer unpredictable traffic delays in the Richmond, Kew Bridge, Chiswick, Hammersmith and Fulham areas.
- 4.2) Football matches at Fulham and Chelsea football clubs and home matches and other events at the Rugby Football union ground at Twickenham can also cause traffic congestion in the surrounding areas.

5) ROUTE RECORD, CURRENT PERFORMANCE, QSI BY TIME OF DAY, IBUS MILEAGE & QSI POINTS

- 5.1) ROUTE RECORD
As per Busnet Printout.
- 5.2) CURRENT PERFORMANCE
As per current print out.
- 5.3) QSI BY TIME OF DAY
As per current print out.
- 5.4) IBUS MILEAGE & QSI POINTS
As per current print out.

LONDON BUSES - ROUTE DESCRIPTION

ROUTE 391: Richmond Bus Station - Sands End, Sainsburys

Date of Structural Change: 14 December 2013.

Date of Service Change: 14 December 2013.

Reason for Issue: New Tender.

STREETS TRAVERSED

Towards Sands End, Sainsburys: George Street, The Square, The Quadrant, Kew Road, Richmond Circus, Lower Mortlake Road, Manor Circus, Sandycombe Road, Kew Gardens Road, Kew Road, Kew Bridge, Kew Bridge Road, Chiswick High Road, Chiswick Roundabout, Chiswick High Road, King Street, Studland Street, Glenthorne Road, Beadon Road, Hammersmith Broadway, Hammersmith Bus Station Northern Entrance Ramp, Hammersmith Bus Station High Level, Hammersmith Bus Station Northern Exit Ramp, Hammersmith Broadway, Hammersmith Road, North End Road, Fulham Road, Fulham Broadway, Harwood Road, New Kings Road, Bagley's Lane, Harwood Terrace, Imperial Road, Townmead Road, Watermeadow Lane, William Morris Way.

Towards Richmond Bus Station: William Morris Way, Townmead Road, Imperial Road, Harwood Terrace, Bagley's Lane, New Kings Road, Harwood Road, Fulham Broadway, Fulham Road, North End Road, Hammersmith Road, Butterwick, Talgarth Road, Hammersmith Bus Station High Level, Talgarth Road, Queen Caroline Street, King Street, Chiswick High Road, Chiswick Roundabout, Chiswick High Road, Kew Bridge Road, Kew Bridge, Kew Road, Kew Gardens Road, Sandycombe Road, Manor Circus, Lower Mortlake Road, Richmond Circus, Kew Road, The Quadrant, The Square, Eton Street, Paradise Road, Church Terrace, Richmond Bus Station.

AUTHORISED STANDS, CURTAILMENT POINTS, & BLIND DESCRIPTIONS

Please note that only stands, curtailment points, & blind descriptions as detailed in this contractual document may be used.

RICHMOND BUS STATION, WAKEFIELD ROAD

Private stand for five buses in bus station on north side of Wakefield Road.
Buses proceed from Richmond Bus Station direct to stand, departing via Richmond Bus Station, Wakefield Road, Lewis Road, Red Lion Street and Hill Street to George Street. Set down in Richmond Bus Station, at Alighting Point (BP2634 - Richmond Bus Station, Last Stop on LOR: BP2634 - Richmond Bus Station) and pick up in George Street, at Stop B (29982 - George Street, First Stop on LOR: 29982 - George Street).

AVAILABILITY: At any time.
OPERATING RESTRICTIONS: No more than 2 buses on Route 391 should be scheduled to stand at any one time.
MEAL RELIEFS: No meal relief vehicles to stand at any time.
FERRY VEHICLES: No ferry vehicles to park on stand at any time.
BLIND DISPLAY: Richmond.

RICHMOND, MANOR CIRCUS (from SANDS END, SAINSBURYS)

Buses proceed from Sandycombe Road via Manor Circus departing to Sandycombe Road. Set down in Sandycombe Road, at stop SP (9284 - Gainsborough Road, Last Stop on LOR: 9284 - Gainsborough Road) and pick up in Sandycombe Road, at stop SR (9283 - Gainsborough Road, First Stop on LOR: 9283 - Gainsborough Road).

AVAILABILITY: At any time.
OPERATING RESTRICTIONS: **Turning Point Only - Buses must not stand**
BLIND DISPLAY: North Sheen, Manor Circus.

KEW GARDENS STATION (from SANDS END, SAINSBURYS)

Public stand for one bus on south side of Station Parade, commencing 4 metres east of lamp standard number 1087.
Buses proceed from Kew Gardens Road via Sandycombe Road, Station Approach and Station Parade to stand, departing via Station Parade to Sandycombe Road. Set down in Kew Gardens Road, at Stop G (BP033 - Kew Gardens Road, Last Stop on LOR: R0276 - Mortlake Road) and pick up in Sandycombe Road, at Stop N (40001 - Kew Gardens Station <> #, First Stop on LOR: 40001 - Kew Gardens Station <> #).

AVAILABILITY: At any time.
OPERATING RESTRICTIONS: Unscheduled curtailments only.
MEAL RELIEFS: No meal relief vehicles to stand at any time.
FERRY VEHICLES: No ferry vehicles to park on stand at any time.
BLIND DISPLAY: Kew Gardens Station.

GUNNERSBURY, CHISWICK ROUNDABOUT

From Richmond Bus Station.

Buses proceed from Chiswick High Road via Chiswick Roundabout departing to Chiswick High Road. Set down in Chiswick High Road, at Stop L (3163 - Brentford Fountain Leisure Centre, Last Stop on LOR: 3163 - Brentford Fountain Leisure Centre) and pick up in Chiswick High Road, at Stop K (3164 - Brentford Fountain Leisure Centre, First Stop on LOR: 3164 - Brentford Fountain Leisure Centre).

From Sands End, Sainsburys.

Buses proceed from Chiswick High Road via Chiswick Roundabout departing to Chiswick High Road. Set down in Chiswick High Road, at Stop J (6159 - Power Road, Last Stop on LOR: 6159 - Power Road) and pick up in Chiswick High Road, at Stop K (6158 - Oxford Road North, First Stop on LOR: 6158 - Oxford Road North).

AVAILABILITY: At any time.
OPERATING RESTRICTIONS: **Turning Point Only - Buses must not stand**
BLIND DISPLAY: Chiswick Roundabout.

TURNHAM GREEN, HEATHFIELD TERRACE (from SANDS END, SAINSBURYS)

Public stand for two buses on east side of Heathfield Terrace, commencing at lamp standard number 4 extending 27 metres north.

Buses proceed from Chiswick High Road via Heathfield Terrace to stand, departing via Heathfield Terrace and Sutton Lane North to Chiswick High Road. Set down in Chiswick High Road, at Stop SS (1039 - Chiswick Police Station, Last Stop on LOR: 6153 - Chiswick Lane) and pick up in Chiswick High Road, at Stop DD (134 - Turnham Green Church, First Stop on LOR: 134 - Turnham Green Church).

AVAILABILITY: At any time.
OPERATING RESTRICTIONS: **Unscheduled curtailments only.**
MEAL RELIEFS: No meal relief vehicles to stand at any time.
FERRY VEHICLES: No ferry vehicles to park on stand at any time.
BLIND DISPLAY: Turnham Green.

RAVENS COURT PARK (from Richmond Bus Station)

Buses proceed from King Street via Studland Street, Glenthorne Road and Dalling Road departing to King Street. Set down in King Street, at Stop C (6144 - Dalling Road, Last Stop on LOR: 6144 - Dalling Road) and pick up in King Street, at Stop D (BP1501 - Ravenscourt Park Station <>, First Stop on LOR: BP1501 - Ravenscourt Park Station <>).

AVAILABILITY: At any time.
OPERATING RESTRICTIONS: **Turning Point Only - Buses must not stand**
BLIND DISPLAY: Ravenscourt Park.

HAMMERSMITH BUS STATION, UPPER LEVEL

From Richmond Bus Station.

Buses proceed from Hammersmith Bus Station High Level departing to Hammersmith Bus Station High Level. Set down in Hammersmith Bus Station High Level, at Stop Z1 (R0874 - Hammersmith Bus Station, Last Stop on LOR: 29966 - Hammersmith Stn/h'smith & City Line<>) and pick up in Hammersmith Bus Station High Level, at Stop B (R0876 - Hammersmith Bus Station, First Stop on LOR: R0876 - Hammersmith Bus Station).

From Sands End, Sainsburys.

Buses proceed from Hammersmith Bus Station High Level departing to Hammersmith Bus Station High Level. Set down in Hammersmith Bus Station High Level, at Stop E (R0879 - Hammersmith Bus Station, Last Stop on LOR: BP503 - Hammersmith Broadway) and pick up in Hammersmith Bus Station High Level, at Stop F (R0880 - Hammersmith Bus Station, First Stop on LOR: R0880 - Hammersmith Bus Station).

AVAILABILITY: At any time.
OPERATING RESTRICTIONS: **Turning Point Only - Buses must not stand**
BLIND DISPLAY: Hammersmith.

WEST BROMPTON, EMPRESS STATE BUILDING (from Richmond Bus Station)

Private stand for four buses in two marked bays on east side of forecourt of Empress State Building.

Buses proceed from North End Road via Lillie Road and Empress State Building Forecourt to stand, departing via Empress State Building Forecourt and Lillie Road to North End Road. Set down in North End Road, at Stop BR (11252 - Lillie Road, Last Stop on LOR: 11252 - Lillie Road) and pick up in North End Road, at Stop BT (11253 - West Kensington Estate, First Stop on LOR: 11253 - West Kensington Estate).

AVAILABILITY: At any time.
OPERATING RESTRICTIONS: Unscheduled curtailments only
MEAL RELIEFS: No meal relief vehicles to stand at any time.
FERRY VEHICLES: No ferry vehicles to park on stand at any time.
BLIND DISPLAY: North End Road, Lillie Road.

FULHAM BROADWAY (from Richmond Bus Station)

Public stand for one bus forward of bus stop E on north side of Fulham Broadway, commencing outside Caffè Nero.

Buses proceed from Fulham Broadway direct to stand, departing via Fulham Broadway, Jerdan Place and Vanston Place to Fulham Broadway. Set down in Fulham Broadway, at Stop E (9327 - Fulham Broadway, Last Stop on LOR: 9327 - Fulham Broadway) and pick up in Fulham Broadway, at Stop F (9328 - Fulham Broadway, First Stop on LOR: 9328 - Fulham Broadway).

AVAILABILITY:	At any time.
OPERATING RESTRICTIONS:	Unscheduled curtailments only
MEAL RELIEFS:	No meal relief vehicles to stand at any time.
FERRY VEHICLES:	No ferry vehicles to park on stand at any time.
BLIND DISPLAY:	Fulham Broadway.
OTHER INFORMATION:	Stand available between 2000 & 0700 Mondays to Saturdays, and all day on Sundays and Public Holidays. Outside these times, stand may only be used for hesitation.

SANDS END, SAINSBURYS, WILLIAM MORRIS WAY

Public stand for two buses in bay on south side of William Morris Way, adjacent to supermarket.

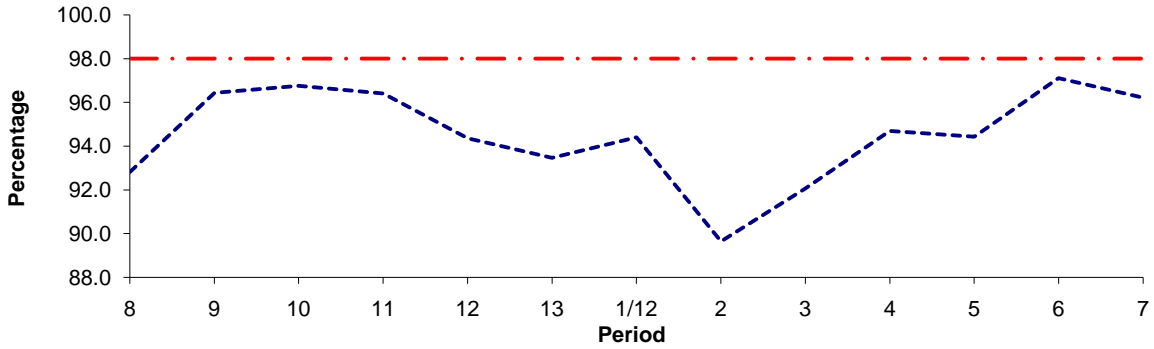
Buses proceed from William Morris Way direct to stand, departing to William Morris Way. Set down in William Morris Way, at Stop TS (BP1332 - Sands End / Sainsbury's, Last Stop on LOR: BP1332 - Sands End / Sainsbury's) and pick up in William Morris Way, at Stop TS (BP1332 - Sands End / Sainsbury's, First Stop on LOR: BP1332 - Sands End / Sainsbury's).

AVAILABILITY:	At any time.
OPERATING RESTRICTIONS:	No more than 2 buses on Route 391 should be scheduled to stand at any one time.
MEAL RELIEFS:	No meal relief vehicles to stand at any time.
FERRY VEHICLES:	No ferry vehicles to park on stand at any time.
BLIND DISPLAY:	Fulham, Sands End.

PART B - PERFORMANCE STATISTICS

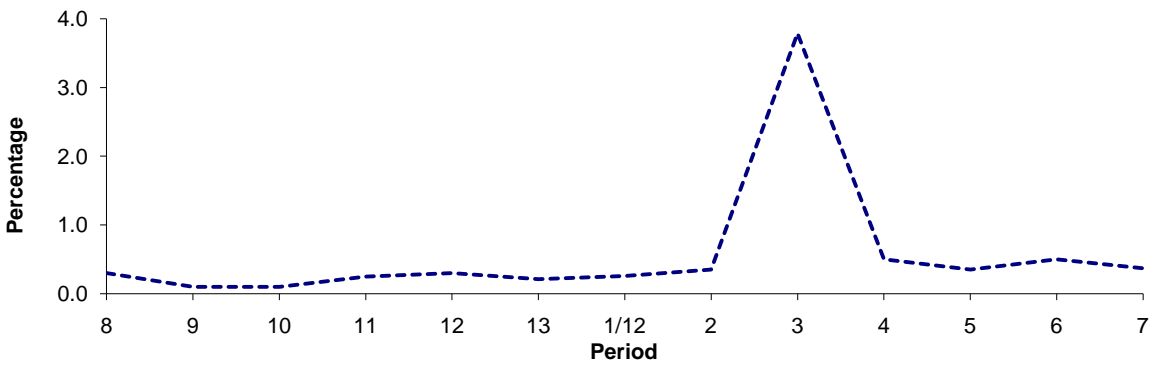
Route 391

Mileage Operated



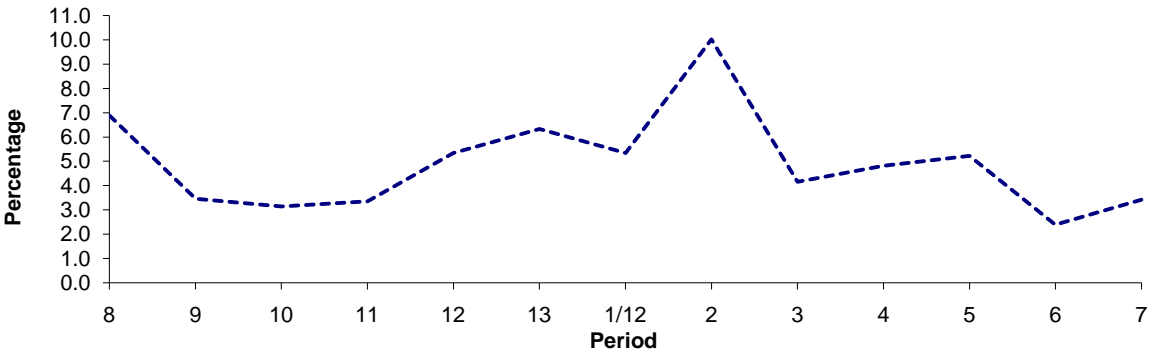
Period	8	9	10	11	12	13	1/12	2	3	4	5	6	7
2011/2012	92.82	96.44	96.76	96.40	94.36	93.47	94.40	89.64	92.06	94.69	94.43	97.11	96.22
Min Standard	98.00	98.00	98.00	98.00	98.00	98.00	98.00	98.00	98.00	98.00	98.00	98.00	98.00

Deductible Mileage



Period	8	9	10	11	12	13	1/12	2	3	4	5	6	7
2011/2012	0.30	0.10	0.10	0.25	0.30	0.21	0.26	0.35	3.79	0.50	0.35	0.50	0.37

Non Deductible Mileage

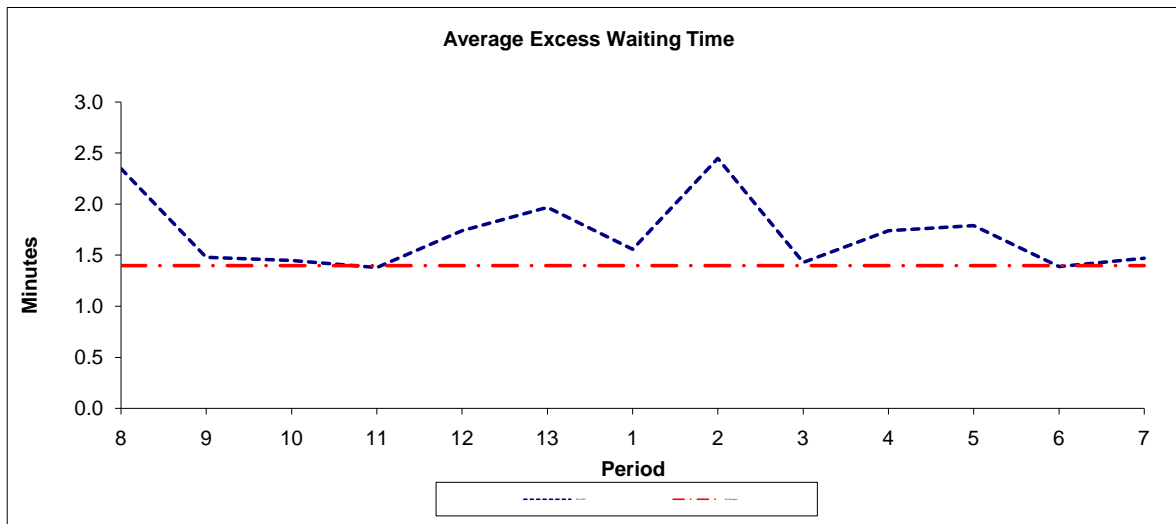


Period	8	9	10	11	12	13	1/12	2	3	4	5	6	7
2011/2012	6.88	3.46	3.14	3.35	5.34	6.32	5.34	10.01	4.15	4.81	5.22	2.39	3.41

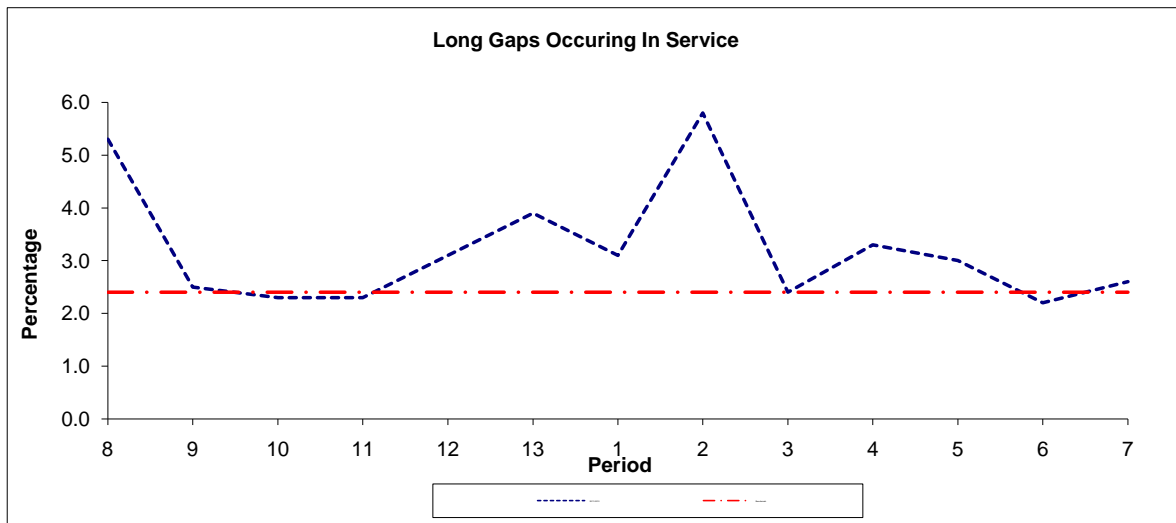
Note : Mileage is based on 4 weeks data
 Performance affected by industrial action in p3 2012/13.

PART B - PERFORMANCE STATISTICS

Route 391



Period	8	9	10	11	12	13	1	2	3	4	5	6	7
2011-2012	2.35	1.48	1.45	1.38	1.74	1.97	1.56	2.45	1.43	1.74	1.79	1.39	1.47
Min Standard	1.40	1.40	1.40	1.40	1.40	1.40	1.40	1.40	1.40	1.40	1.40	1.40	1.40



Period	8	9	10	11	12	13	1	2	3	4	5	6	7
2011-2012	5.3	2.5	2.3	2.3	3.1	3.9	3.1	5.8	2.4	3.3	3.0	2.2	2.6
Benchmark	2.4	2.4	2.4	2.4	2.4	2.4	2.4	2.4	2.4	2.4	2.4	2.4	2.4

Note : Reliability is actual performance under full iBus (4 weeks data).
 Minimum Standards and Benchmarks are those applicable under the new contract.

ROUTE 391 - FULL iBUS RESULTS BY TIME OF DAY
QUARTER 3 11/12 TO QUARTER 2 12/13 (17/09/2011 to 14/09/2012)

MONDAY - FRIDAY

Time Period	Expected Buses	On AVL (%)	Scheduled Waiting Time (SWT) (mins)	Excess Waiting Time (EWT) (mins)	Actual Waiting Time (AWT) (mins)	Probability of Waiting < 10 mins (%)	Probability of Waiting 10-20 mins (%)	Probability of Waiting 20-30 mins (%)	Probability of Waiting > 30 mins (%)	Long Gaps (%)	Maximum Gap (mins)
0500 - 0700	23,738.	94.0	8.36	0.80	9.16	70.8	25.1	3.7	0.4	1.8	62.1
0700 - 1000	93,254.	95.2	4.96	1.56	6.52	78.3	18.8	2.3	0.5	2.9	91.1
1000 - 1300	89,565.	93.6	4.99	1.87	6.87	75.6	20.7	3.0	0.7	3.7	67.3
1300 - 1600	92,266.	93.9	4.96	1.88	6.84	75.9	20.7	2.8	0.5	3.5	68.3
1600 - 1900	92,524.	91.7	4.97	2.22	7.18	73.5	21.7	3.8	1.0	4.9	68.2
1900 - 2200	83,435.	96.5	5.37	1.84	7.21	74.1	22.0	3.2	0.7	3.4	74.5
2200 - 2400	50,565.	100.6	5.94	0.93	6.88	76.4	22.1	1.2	0.3	0.7	70.0
Summary	525,347.	94.7	5.16	1.82	6.98	75.4	20.9	3.0	0.7	3.6	91.1

SATURDAY

Time Period	Expected Buses	On AVL (%)	Scheduled Waiting Time (SWT) (mins)	Excess Waiting Time (EWT) (mins)	Actual Waiting Time (AWT) (mins)	Probability of Waiting < 10 mins (%)	Probability of Waiting 10-20 mins (%)	Probability of Waiting 20-30 mins (%)	Probability of Waiting > 30 mins (%)	Long Gaps (%)	Maximum Gap (mins)
0500 - 0700	3,941.	99.9	9.94	0.16	10.10	59.9	33.9	5.7	0.5	2.3	80.1
0700 - 1000	14,578.	98.5	6.54	0.90	7.44	73.6	24.4	1.9	0.1	0.3	43.9
1000 - 1300	19,089.	95.3	4.92	1.39	6.32	79.1	18.7	1.9	0.3	2.4	46.8
1300 - 1600	18,858.	94.1	4.96	1.99	6.95	75.6	20.3	3.2	0.8	4.2	55.1
1600 - 1900	19,014.	93.3	4.94	1.67	6.61	77.5	19.6	2.4	0.4	3.0	65.4
1900 - 2200	16,588.	95.5	5.52	1.87	7.40	72.1	23.2	3.6	1.1	3.6	66.5
2200 - 2400	10,446.	99.1	5.94	1.23	7.17	73.9	23.8	2.1	0.2	0.9	49.1
Summary	102,514.	95.8	5.38	1.56	6.94	75.7	21.2	2.7	0.5	2.8	80.1

SUNDAY AND BANK HOLIDAYS

Time Period	Expected Buses	On AVL (%)	Scheduled Waiting Time (SWT) (mins)	Excess Waiting Time (EWT) (mins)	Actual Waiting Time (AWT) (mins)	Probability of Waiting < 10 mins (%)	Probability of Waiting 10-20 mins (%)	Probability of Waiting 20-30 mins (%)	Probability of Waiting > 30 mins (%)	Long Gaps (%)	Maximum Gap (mins)
0500 - 0700	2,453.	100.3	14.30	0.13	14.43	53.7	21.7	19.0	5.5	7.1	62.4
0700 - 1000	9,577.	98.5	11.14	1.06	12.20	53.1	31.5	12.3	3.1	0.1	69.4
1000 - 1300	17,830.	99.5	5.96	0.72	6.68	77.2	21.5	1.2	0.1	0.5	55.7
1300 - 1600	17,597.	97.4	5.91	1.31	7.21	73.3	23.6	2.6	0.5	1.4	57.6
1600 - 1900	17,909.	91.8	5.75	1.82	7.57	70.5	24.3	4.0	1.2	3.2	56.0
1900 - 2200	17,712.	95.6	5.79	2.04	7.83	71.0	23.7	4.0	1.2	3.1	91.5
2200 - 2400	11,690.	100.5	6.00	0.81	6.81	77.2	21.4	1.2	0.2	0.6	48.7
Summary	94,768.	97.0	6.46	1.34	7.80	71.2	23.9	3.9	1.0	1.8	91.5

ALL DAYS

Time Period	Expected Buses	On AVL (%)	Scheduled Waiting Time (SWT) (mins)	Excess Waiting Time (EWT) (mins)	Actual Waiting Time (AWT) (mins)	Probability of Waiting < 10 mins (%)	Probability of Waiting 10-20 mins (%)	Probability of Waiting 20-30 mins (%)	Probability of Waiting > 30 mins (%)	Long Gaps (%)	Maximum Gap (mins)
0500 - 0700	30,132.	95.3	8.77	0.70	9.47	68.6	25.8	4.8	0.7	2.1	80.1
0700 - 1000	117,409.	95.9	5.39	1.48	6.87	76.7	19.9	2.8	0.6	2.6	91.1
1000 - 1300	126,484.	94.7	5.09	1.67	6.76	76.4	20.5	2.6	0.5	3.1	67.3
1300 - 1600	128,721.	94.4	5.06	1.84	6.90	75.6	21.0	2.9	0.6	3.4	68.3
1600 - 1900	129,447.	92.0	5.04	2.12	7.16	73.7	21.7	3.7	0.9	4.5	68.2
1900 - 2200	117,735.	96.3	5.43	1.87	7.30	73.5	22.3	3.3	0.8	3.4	91.5
2200 - 2400	72,701.	100.3	5.95	0.96	6.91	76.2	22.2	1.3	0.3	0.7	70.0
Summary	722,629.	95.2	5.31	1.74	7.05	75.1	21.2	3.1	0.7	3.3	91.5

Transport for London - QSI and Mileage List

v2.0 - Mileage directly imported from Caesar

Route 391
 Service change 29342
 Date 07/01/2012

Tranche 430

Reason for Issue

Richmond Bus Station

QSI Points are highlighted in blue.

OUT DIRECTION				
Timing Point Code	Stop Number	Stop Name	Metres	Miles
RICHGS	29982	George Street		
	16350	The Quadrant	284	0.18
RICHSN	14726	Richmond Station	121	0.08
	16239	Richmond Circus	410	0.25
	16242	Sheendale Road	212	0.13
	9347	Manor Circus	317	0.20
	9283	Gainsborough Road	304	0.19
	15675	Dudley Road	325	0.20
	15673	Kew Gardens Hotel	470	0.29
KEWGSN	40001	Kew Gardens Station	186	0.12
	15044	Kew Gardens Road	425	0.26
	15042	Mortlake Road	181	0.11
KEW GN	15040	Kew Bridge	408	0.25
KEWBSN	2196	Kew Bridge Station	410	0.25
GUNNRA	3163	Brentford Fountain Leisure Centre	267	0.17
	6158	Oxford Road North	512	0.32
	1049	Gunnersbury Station	153	0.10
	R0209	Chiswick Road	350	0.22
TURNCH	134	Turnham Green Church	415	0.26
	33871	Clifton Gardens	235	0.15
	27402	Chiswick Police Station	263	0.16
	29149	Chiswick Lane	326	0.20
V GR	1037	Stamford Brook Bus Garage	266	0.17
	29874	Goldhawk Road / Young's Corner	178	0.11
	6148	Ravenscourt Park	478	0.30
	6146	Ravenscourt Park Station	172	0.11
	6144	Dalling Road	133	0.08
	BP3195	Lamington Street	428	0.27
	20412	Iffley Road	136	0.08
	29966	Hammersmith Str/H'smith & City Line	352	0.22
HAMMBU	R0880	Hammersmith Bus Station	403	0.25
	687	Latymer Court	464	0.29
	3614	Brook Green	202	0.13
	11262	Kensington Olympia	445	0.28
	11258	Lytton Estate	274	0.17
WKENSN	11256	West Kensington Station	246	0.15
	11254	West Kensington Estate	363	0.23
NERDLR	11252	Lillie Road	222	0.14
	37426	North End Road Market	263	0.16
	9327	Fulham Broadway	550	0.34
FULHBY	25627	Fulham Town Hall	317	0.20
	1462	Tyrawley Road	221	0.14
	BP4097	Harwood Terrace	451	0.28
CHELHI	BP4095	Imperial Wharf Stn / Chelsea Harbour	258	0.16
	BP216	Bagleys Lane	275	0.17
	BP2564	Glenrosa Street	158	0.10
SENDSY	BP1332	Sands End / Sainsbury's	529	0.33
TOTAL ROUTE MILEAGE - OUT DIRECTION			14358	8.92
			metres	miles

BACK DIRECTION				
Timing Point Code	Stop Number	Stop Name	Metres	Miles
SENDSY	BP1332	Sands End / Sainsbury's		
	BP170	William Morris Way / Sainsbury's	102	0.06
	BP2563	Glenrosa Street	267	0.17
	BP217	Imperial Wharf Station / Imperial Road	291	0.18
CHELHI	BP4096	Imperial Road / Chelsea Harbour	233	0.14
	BP5183	Fulmead Street	215	0.13
	BP4098	Harwood Terrace	142	0.09
	1461	Tyrawley Road	295	0.18
FULHBY	3649	Fulham Town Hall	298	0.19
	9328	Fulham Broadway	251	0.16
	1457	Shorrols Road	287	0.18
NERDLR	11251	Lillie Road	385	0.24
	11253	West Kensington Estate	367	0.23
WKENSN	11255	West Kensington Station	291	0.18
	11259	Lytton Estate	431	0.27
	34350	Kensington Olympia / Hammersmith Road	202	0.13
	3015	Brook Green	419	0.26
	4682	Latymer Court	172	0.11
	BP503	Hammersmith Broadway	238	0.15
HAMMBU	R0876	Hammersmith Bus Station	588	0.37
	51781	Kings Mall Shopping Centre	497	0.31
	24779	Hammersmith Town Hall	392	0.24
	BP1501	Ravenscourt Park Station	210	0.13
	6149	Ravenscourt Park	329	0.20
	174	Goldhawk Road	256	0.16
V GR	1038	Stamford Brook Bus Garage	381	0.24
	6153	Chiswick Lane	277	0.17
	1039	Chiswick Police Station	442	0.27
TURNCH	133	Turnham Green Church	426	0.26
	6157	Chiswick Road	328	0.20
	27303	Gunnersbury Station	308	0.19
	6159	Power Road	331	0.21
GUNNRA	3164	Brentford Fountain Leisure Centre	438	0.27
KEWBSN	2194	Kew Bridge	373	0.23
KEW GN	15041	Kew Green	341	0.21
	R0276	Mortlake Road	290	0.18
	BP033	Kew Gardens Road	365	0.23
KEWGSN	FW40	Kew Gardens Station	360	0.22
	15674	Lawn Crescent	296	0.18
	15676	Dudley Road	314	0.20
	9284	Gainsborough Road	345	0.21
	R0293	Manor Circus	285	0.18
	16241	Sheendale Road	206	0.13
	16240	Richmond Circus	363	0.23
RICHSN	20703	Richmond Station	366	0.23
	16351	The Quadrant	175	0.11
RICHBS	BP2634	Richmond Bus Station	429	0.27
TOTAL ROUTE MILEAGE - BACK DIRECTION			14597	9.07
			metres	miles