

## 7. Service Specification

Route:D8

Contract Reference: QC60803

This Service Specification forms section 7 of the ITT and should be read in conjunction with the ITT document, Version 1 dated 29 September 2011.

You are formally invited to tender for the provision of the bus service detailed below and in accordance with this Service Specification. Tenderers must ensure that a Compliant Tender is submitted and this will only be considered for evaluation if all parts of the Tender documents, as set out in section 11, have been received by the Corporation by the Date of Tender. The Tender must be fully completed in the required format, in accordance with the Instructions to Tenderers. A Compliant Tender must comply fully with the requirements of the Framework Agreement; adhere to the requirements of the Service Specification; and reflect the price of operating the Services with new vehicles.

<b>Terminus Points</b>	Crossharbour, Asda and Stratford Bus Station, East Stand
<b>Contract Basis</b>	Incentivised
<b>Commencement Date</b>	15 <sup>th</sup> September 2018
<b>Vehicle Type</b>	87 capacity, dual door, double deck vehicles
<b>Current Maximum Approved Dimensions</b>	10.7 metres long and 2.55 metres wide
<b>New Vehicles Mandatory</b>	Yes
<b>Hybrid Price Required</b>	Yes
<b>Sponsored Route</b>	No
<b>Advertising Rights</b>	Operator
<b>Minimum Performance Standard</b>	Average Excess Wait Time - No more than 0.90 minutes
<b>Extension Threshold</b>	Average Excess Wait Time Threshold - 0.85 minutes
<b>Minimum Operated Mileage Standard</b>	No less than 98%

The Date of Tender for this ITT is:

No later than 12 Noon on Monday 31<sup>st</sup> July 2017

*Tenderers should refer to section 3 of Part A for the Service Specification Explanatory Notes and Appendix B of section 5 for the Example Service Specification of the ITT document.*

## **SERVICE SPECIFICATION**

- 1) SERVICE SPEC - ROUTE SPECIFICATION INFORMATION
- 2) NOTES
- 3) SCHEDULE REQUIREMENTS & PINCHPOINTS
- 4) OPERATIONAL CONSIDERATIONS
- 5) ROUTE RECORD, CURRENT PERFORMANCE, QSI BY TIME OF DAY, IBUS MILEAGE & QSI POINTS

## 2) NOTES

### **Proposed Changes:**

At this time, no changes are proposed to the existing service for introduction prior to the commencement of the new Route Agreement for Route No. D8.

Tenderers should note that there are no changes proposed as part of this Service Specification for Route No. D8.

**The Mayor and Transport for London (TfL) have developed a series of clean bus corridors which will be 'Low Emission Bus Zones' (LEBZ) in London. The corridors will prioritise the greenest buses on the worst polluted routes, as part of the Mayor's plans to improve air quality across London.**

**The Low Emission Bus Zones will begin to be introduced from early 2017 and will apply 24 hours a day, 7 days a week, and will require all buses operating for TfL within the zones to meet Euro VI emission standards.**

- **Route No. D8 serves LEBZ 5 (Stratford) which is scheduled to commence in January 2018.**
- **Any existing vehicles will need to be upgraded to reduce NOx and PM emissions to meet the equivalent of Euro VI emission standards. The costs to achieve this upgrade should be included in the overall tender price. For LBSL budgeting purposes, the cost (per vehicle) to the operator of the upgrade should also be identified separately.**

**Operators should provide the following prices:**

- 1. Annual diesel-electric hybrid price - based on minimum 5 year contract.**

**Tenderers are encouraged to offer alternative vehicle options in accordance with Part 9 of their tender, including but not limited to:**

- 1. New two door, single staircase vehicles inspired by the New Routemaster in respect of both their external and internal design, to the appropriate specification agreed between TfL and the manufacturers.**
- 2. Vehicles that offer genuine increased capacity on two axles and are certified as such.**
- 3. Modifications to reduce emissions and fuel consumption (including energy storage, engine stop/start, extended zero-emission range and/or energy efficient components)**
- 4. Existing vehicles.**

### 3) SCHEDULE REQUIREMENTS & PINCHPOINTS

#### 3.1) MONDAY TO FRIDAY SCHEDULE REQUIREMENTS & PINCHPOINTS

Stratford Bus Station to Crossharbour, Asda			Crossharbour, Asda to Stratford Bus Station		
First departure no later than 0450.			First departure no later than 0500.		
0445 - 0530	Every 20 minutes		0455 - 0600	Every 20 minutes	
0531 - 0645	Every 15 minutes		0601 - 0630	Every 15 minutes	
0646 - 1930	Every 12 minutes		0631 - 1925	Every 12 minutes	
1931 - 2045	Every 15 minutes		1926 - 2025	Every 15 minutes	
2046 - 0050	Every 20 minutes		2026 - 0010	Every 20 minutes	
Last departure no earlier than 0045.			Last departure no earlier than 0005.		
<b>Pinchpoints</b>					
Poplar, All Saints Station	0710 - 0910	12 minutes	Bromley-By-Bow Station	0700 - 0900	12 minutes
	1505 - 1640	12 minutes		1505 - 1640	12 minutes

#### 3.2) SATURDAY AND GOOD FRIDAY SCHEDULE REQUIREMENTS & PINCHPOINTS

Stratford Bus Station to Crossharbour, Asda			Crossharbour, Asda to Stratford Bus Station		
First departure no later than 0450.			First departure no later than 0500.		
0445 - 0650	Every 20 minutes		0455 - 0800	Every 20 minutes	
0651 - 0835	Every 15 minutes		0801 - 0830	Every 15 minutes	
0836 - 1830	Every 12 minutes		0831 - 1815	Every 12 minutes	
1831 - 1945	Every 15 minutes		1816 - 1945	Every 15 minutes	
1946 - 0050	Every 20 minutes		1946 - 0010	Every 20 minutes	
Last departure no earlier than 0045.			Last departure no earlier than 0005.		
<b>Pinchpoints</b>					
Poplar, All Saints Station	0850 - 1100	12 minutes	Bromley-By-Bow Station	0850 - 1100	12 minutes

#### 3.3) SUNDAY AND PUBLIC HOLIDAYS (EXCEPT GOOD FRIDAY AND CHRISTMAS DAY) SCHEDULE REQUIREMENTS & PINCHPOINTS

Stratford Bus Station to Crossharbour, Asda			Crossharbour, Asda to Stratford Bus Station		
First departure no later than 0555.			First departure no later than 0555.		
0550 - 0725	Every 30 minutes		0550 - 0725	Every 30 minutes	
0726 - 0050	Every 20 minutes		0726 - 0010	Every 20 minutes	
Last departure no earlier than 0045.			Last departure no earlier than 0005.		
<b>Pinchpoints</b>					
Poplar, All Saints Station	1010 - 1130	20 minutes	Bromley-By-Bow Station	1005 - 1125	20 minutes

Tenderers must identify the cost of the Boxing Day element of this service separately.

#### **4) OPERATIONAL CONSIDERATIONS**

- 4.1) Route No. D8 can suffer from unpredictable traffic delays in the Stratford and Bow areas.
- 4.2) There is significant committed development in the Isle of Dogs including the Wood Wharf and Millennium Quarter sites. The development will have an impact on travel demand in the area.
- 4.3) The Elizabeth Line will connect the City, Canary Wharf, the West End and Heathrow Airport to commuter areas east and west of the capital. Major construction of the railway began in 2010, with the first services expected to commence through the central London tunnelled section in late 2018. The full Elizabeth Line service will be operating from Heathrow and Reading to Abbey Wood and Shenfield in late 2019. The construction impacts of the Elizabeth Line could affect Route No. D8. There is potential for a change in passenger demand once the line becomes fully operational. A review, post opening of the Elizabeth Line, will be undertaken if required.

#### **5) ROUTE RECORD, CURRENT PERFORMANCE, QSI BY TIME OF DAY, IBUS MILEAGE & QSI POINTS**

- 5.1) ROUTE RECORD  
As per Busnet printout.
- 5.2) CURRENT PERFORMANCE  
As per current print out.
- 5.3) QSI BY TIME OF DAY  
As per current print out.
- 5.4) IBUS MILEAGE & QSI POINTS  
As per current print out.

# LONDON BUSES - ROUTE DESCRIPTION

## ROUTE D8: Stratford Bus Station - Crossharbour, Asda

**Date of Structural Change:** 15 September 2018.

**Date of Service Change:** 15 September 2018.

**Reason for Issue:** New Tender.

### **STREETS TRAVERSED**

**Towards Crossharbour, Asda:** Great Eastern Road, The Grove, Stratford Broadway, Stratford High Street, Bow Interchange, Bow Road, Bromley High Street, Blackwall Tunnel Northern Approach, Bow Interchange, Blackwall Tunnel Northern Approach, Hancock Road, Blackwall Tunnel Northern Approach, Gillender Street, Blackwall Tunnel Northern Approach, Brunswick Road, East India Dock Road, Newby Place, Poplar High Street, Preston's Road, Preston's Road Roundabout, Trafalgar Way, Cartier Circle, Churchill Place, The South Colonnade, Canada Square, The South Colonnade, Cabot Square, West India Avenue, Westferry Circus (Upper Level), Westferry Road, Marsh Wall, Limeharbour, East Ferry Road, Asda Access Road.

**Towards Stratford Bus Station:** Asda Access Road, East Ferry Road, Limeharbour, Marsh Wall, Westferry Road, Westferry Circus (Upper Level), West India Avenue, Cabot Square, The North Colonnade, Canada Square, The North Colonnade, Churchill Place, Cartier Circle, Trafalgar Way, Preston's Road Roundabout, Preston's Road, Poplar High Street, Bazely Street, East India Dock Road, St Leonard's Road, Blackwall Tunnel Northern Approach, St Leonard's Street, Bromley High Street, Blackwall Tunnel Northern Approach, Bow Interchange, Stratford High Street, Great Eastern Road, Station Street.

## **AUTHORISED STANDS, CURTAILMENT POINTS, & BLIND DESCRIPTIONS**

Please note that only stands, curtailment points, & blind descriptions as detailed in this contractual document may be used.

### **STRATFORD BUS STATION, EAST SIDE**

Private stand for 5 buses facing south on east side of Stratford Bus Station on west side of Great Eastern Road.

Buses proceed from Station Street via Stratford Bus Station to stand, departing via Stratford Bus Station to Great Eastern Road. Set down in Station Street, AP (BP5307 - Stratford Bus Station <# [dlr], Last Stop on LOR: BP5307 - Stratford Bus Station <# [dlr]) and pick up in Great Eastern Road, at stop C (BP974 - Stratford Bus Station <#[dlr], First Stop on LOR: BP974 - Stratford Bus Station <#[dlr]).

AVAILABILITY: At any time.  
OPERATING RESTRICTIONS: No more than 2 buses on Route D8 should be scheduled to stand at any one time.  
MEAL RELIEFS: No meal relief vehicles to stand at any time.  
FERRY VEHICLES: No ferry vehicles to park on stand at any time.  
BLIND DISPLAY: Stratford.

### **BROMLEY-BY-BOW HIGH STREET (from CROSSHARBOUR, ASDA)**

Public stand for one bus on north side of Bromley High Street, commencing at the western end of Alton House and extending 17 metres west.

Buses proceed from St Leonard's Street via Bromley High Street to stand, departing via Bromley High Street, Blackwall Tunnel Northern Approach and Bow Interchange to Bow Road. Set down in St Leonard's Street, at stop U (34447 - Grace Street, Last Stop on LOR: 34447 - Grace Street) and pick up in Bow Road, at stop J (2062 - Bow Church, First Stop on LOR: 2062 - Bow Church).

AVAILABILITY: At any time.  
OPERATING RESTRICTIONS: Unscheduled curtailments only.  
MEAL RELIEFS: No meal relief vehicles to stand at any time.  
FERRY VEHICLES: No ferry vehicles to park on stand at any time.  
BLIND DISPLAY: Bromley-By-Bow.

## **POPLAR, ALL SAINTS STATION**

Public stand for 2 buses on west side of Bazely Street commencing approximately 40 metres south of East India Dock Road and extending 20 metres south.

### From Crossharbour, Asda.

Buses proceed from Bazely Street direct to stand, departing via Bazely Street and East India Dock Road to Newby Place. Set down in Bazely Street, at Stop Z (BP782 - Poplar / All Saints Church, Last Stop on LOR: 35297 - Poplar / All Saints Church) and pick up in Newby Place, at Stop G (34215 - Poplar / All Saints Church, First Stop on LOR: 34215 - Poplar / All Saints Church).

### From Stratford Bus Station.

Buses proceed from Poplar High Street via Bazely Street to stand, departing via Bazely Street to East India Dock Road. Set down in Poplar High Street, at Stop T (34214 - Poplar High Street / Blackwall [dlr], Last Stop on LOR: 34214 - Poplar High Street / Blackwall [dlr]) and pick up in East India Dock Road, at Stop A (868 - Bazely Street, First Stop on LOR: 868 - Bazely Street).

AVAILABILITY:	At any time.
OPERATING RESTRICTIONS:	Unscheduled curtailments only.
MEAL RELIEFS:	No meal relief vehicles to stand at any time.
FERRY VEHICLES:	No ferry vehicles to park on stand at any time.
BLIND DISPLAY:	Poplar, All Saints.

## **CANARY WHARF, TRAFALGAR WAY (from CROSSHARBOUR, ASDA)**

Public stand for up to two buses on southbound carriageway of Trafalgar Way, 149 metres south of Broadwalk Place and 204 metres north of Cartier Circle.

Buses proceed from Trafalgar Way direct to stand, departing via Trafalgar Way, Cartier Circle, Churchill Place and The South Colonnade to Canada Square. Set down in Trafalgar Way (LE235 - Billingsgate Market, Last Stop on LOR: LE235 - Billingsgate Market) and pick up in Canada Square, at Stop J (R0314 - Canada Square South).

AVAILABILITY:	At any time.
OPERATING RESTRICTIONS:	Unscheduled curtailments only
MEAL RELIEFS:	No meal relief vehicles to stand at any time.
FERRY VEHICLES:	No ferry vehicles to park on stand at any time.
BLIND DISPLAY:	Canary Wharf.



## **CROSSHARBOUR, ASDA**

Private stand for 5 buses in marked bays in Asda car park.

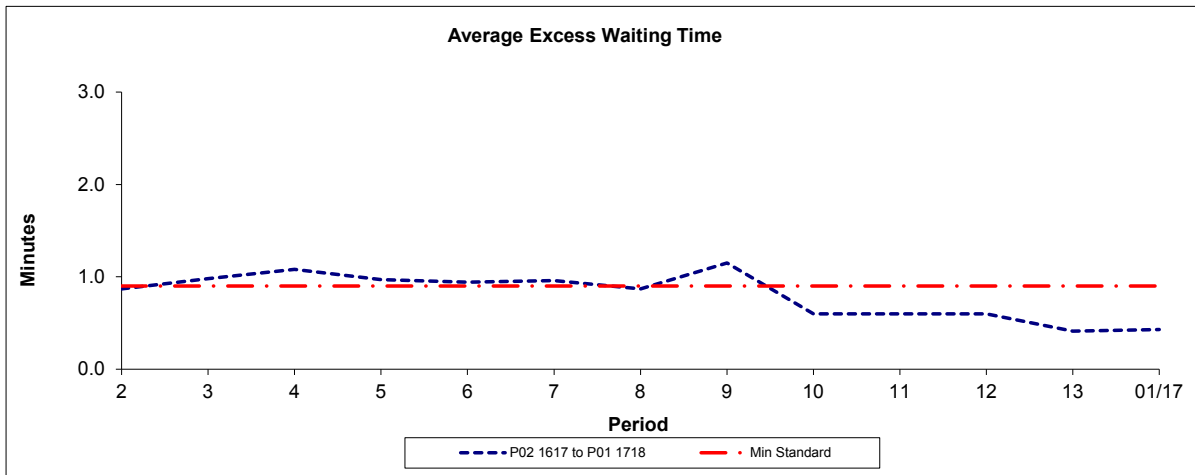
Additional overflow stand for 2 buses on west side of East Ferry Road, between entrance and exit of Asda store.

Buses proceed from Asda Access Road direct to stand, departing to Asda Access Road. Set down in Asda Access Road (OC673 - Isle Of Dogs Asda, Last Stop on LOR: OC673 - Isle Of Dogs Asda) and pick up in Asda Access Road, at Stop CE (R0752 - Crossharbour Asda, First Stop on LOR: R0752 - Crossharbour Asda).

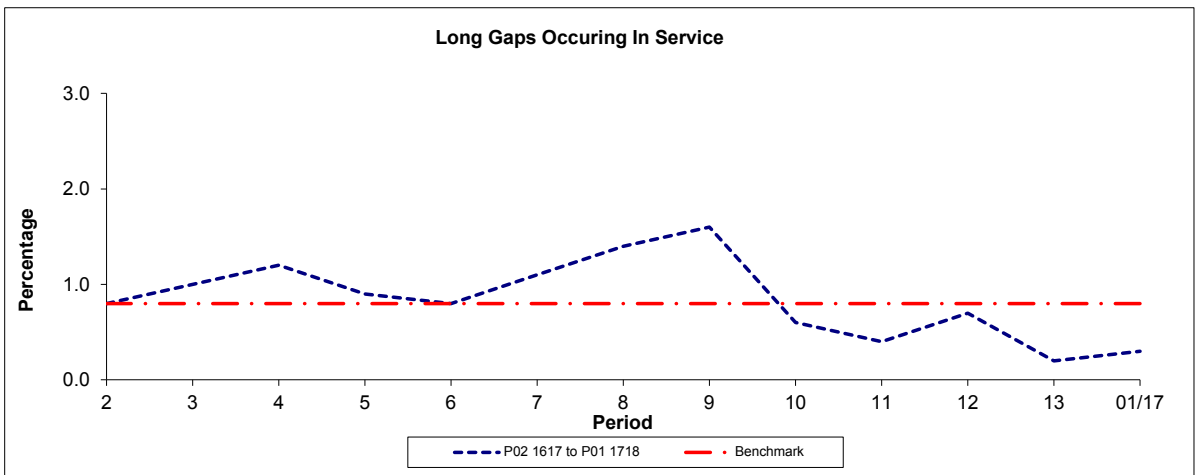
AVAILABILITY:	At any time.
OPERATING RESTRICTIONS:	No more than 2 buses on Route D8 should be scheduled to stand at any one time.
MEAL RELIEFS:	No meal relief vehicles to stand at any time.
FERRY VEHICLES:	No ferry vehicles to park on stand at any time.
BLIND DISPLAY:	Crossharbour.
OTHER INFORMATION:	Toilet facilities available in Asda on Mondays to Saturdays between 0730 and 2200 and on Sundays between 1000 and 1600.

**PART B - PERFORMANCE STATISTICS**

**Route D8**



Period	2	3	4	5	6	7	8	9	10	11	12	13	01/17
P02 1617 to P01 1718	0.87	0.98	1.08	0.97	0.94	0.96	0.87	1.15	0.60	0.60	0.60	0.41	0.43
Min Standard	0.90	0.90	0.90	0.90	0.90	0.90	0.90	0.90	0.90	0.90	0.90	0.90	0.90

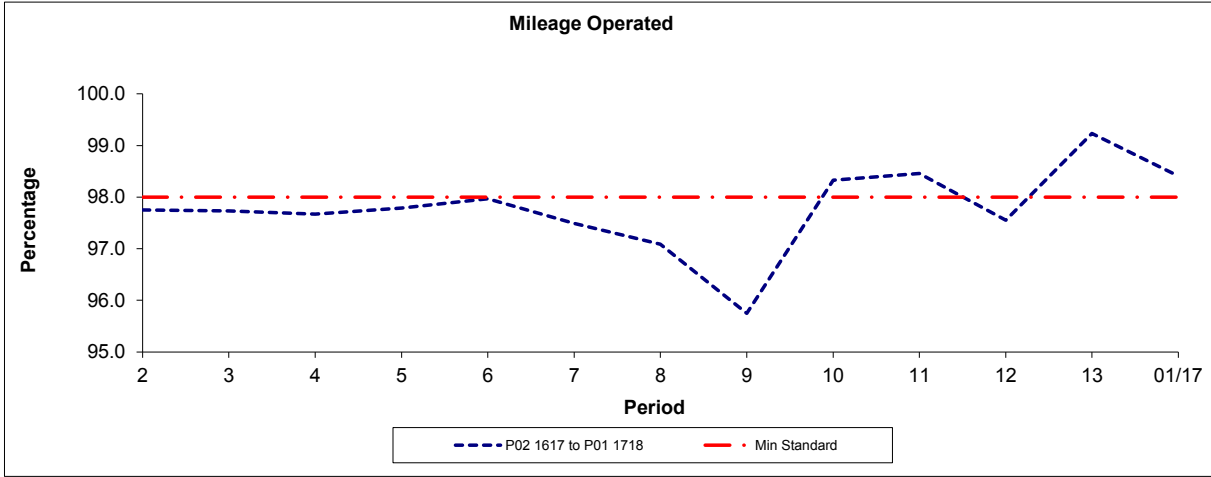


Period	2	3	4	5	6	7	8	9	10	11	12	13	01/17
P02 1617 to P01 1718	0.8	1.0	1.2	0.9	0.8	1.1	1.4	1.6	0.6	0.4	0.7	0.2	0.3
Benchmark	0.8	0.8	0.8	0.8	0.8	0.8	0.8	0.8	0.8	0.8	0.8	0.8	0.8

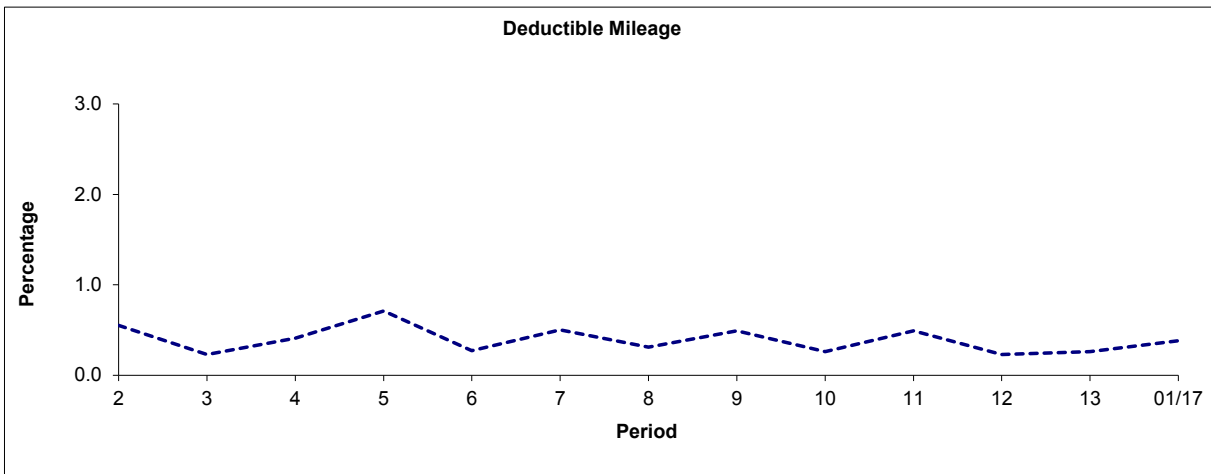
Note : Reliability is actual performance under full iBus (4 weeks data).  
Minimum Standards and Benchmarks are those applicable under the new contract.

**PART B - PERFORMANCE STATISTICS**

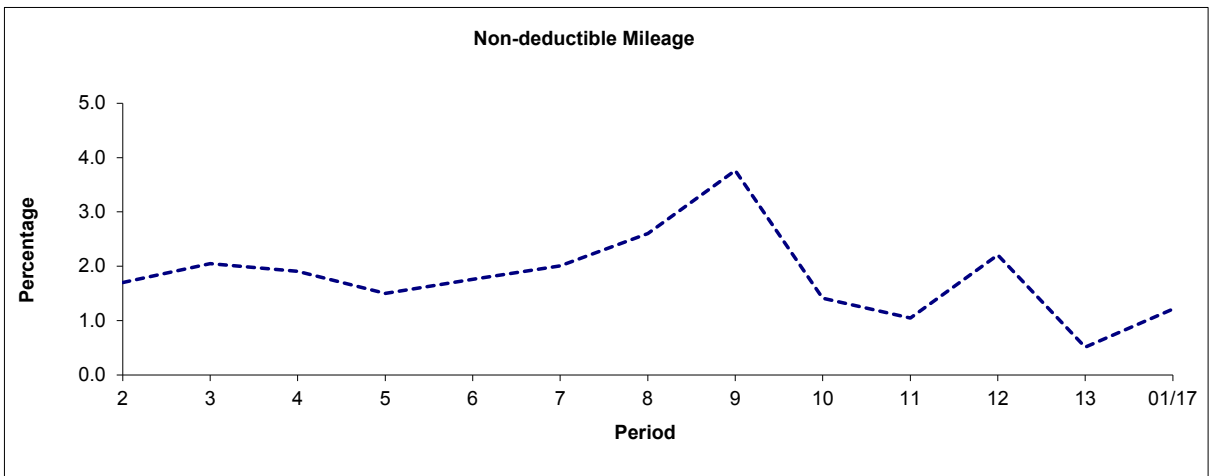
**Route D8**



Period	2	3	4	5	6	7	8	9	10	11	12	13	01/17
P02 1617 to P01 1718	97.75	97.73	97.67	97.79	97.97	97.49	97.09	95.75	98.33	98.46	97.55	99.23	98.41
Min Standard	98.00	98.00	98.00	98.00	98.00	98.00	98.00	98.00	98.00	98.00	98.00	98.00	98.00



Period	2	3	4	5	6	7	8	9	10	11	12	13	01/17
P02 1617 to P01 1718	0.55	0.23	0.41	0.71	0.27	0.50	0.31	0.49	0.26	0.49	0.23	0.26	0.38



Period	2	3	4	5	6	7	8	9	10	11	12	13	01/17
P02 1617 to P01 1718	1.70	2.05	1.91	1.50	1.76	2.01	2.60	3.76	1.41	1.05	2.21	0.51	1.21

Note: Mileage is based on 4 weeks data

**ROUTE D8 - FULL IBUS RESULTS BY TIME OF DAY  
 QUARTERS 1 TO 4 2016/17 (01/04/16 - 31/03/17)**

**MONDAY - FRIDAY**

Time Range	Expected Buses	Observed Buses	Observed Buses (%)	SWT (mins)	EWT (mins)	AWT (mins)	Probability of Waiting < 10 mins (%)	Probability of Waiting 10-20 mins (%)	Probability of Waiting 20-30 mins (%)	Probability of Waiting > 30 mins (%)	Long Gaps (%)	Maximum Gap (mins)
05:00 - 07:00	19,277	19,166	99.4	8.41	0.36	8.77	65.4	31.7	2.7	0.2	0.1	85
07:00 - 10:00	43,333	42,537	98.2	5.90	0.63	6.54	79.0	19.8	0.9	0.2	0.6	66
10:00 - 13:00	42,515	41,828	98.4	6.00	0.60	6.60	78.1	20.9	0.9	0.1	0.4	51
13:00 - 16:00	43,219	41,931	97.0	5.90	0.84	6.74	77.3	20.8	1.5	0.4	1.0	82
16:00 - 19:00	42,089	40,995	97.4	5.96	1.19	7.15	74.1	22.9	2.3	0.8	1.7	62
19:00 - 22:00	31,785	31,204	98.2	7.49	1.05	8.54	62.6	31.9	4.5	1.0	1.1	78
22:00 - 24:00	15,753	15,878	100.8	9.87	0.53	10.40	50.4	42.9	5.8	0.9	0.4	118
<b>All Locations Summary</b>	<b>237,971</b>	<b>233,539</b>	<b>98.1</b>	<b>6.36</b>	<b>0.83</b>	<b>7.19</b>	<b>73.9</b>	<b>23.6</b>	<b>2.0</b>	<b>0.5</b>	<b>0.9</b>	<b>118</b>

**SATURDAY**

Time Range	Expected Buses	Observed Buses	Observed Buses (%)	SWT (mins)	EWT (mins)	AWT (mins)	Probability of Waiting < 10 mins (%)	Probability of Waiting 10-20 mins (%)	Probability of Waiting 20-30 mins (%)	Probability of Waiting > 30 mins (%)	Long Gaps (%)	Maximum Gap (mins)
05:00 - 07:00	3,000	2,891	96.4	10.18	0.85	11.03	49.4	39.9	8.8	1.9	0.5	81
07:00 - 10:00	7,129	6,981	97.9	7.19	0.78	7.97	70.2	27.0	2.4	0.4	0.4	68
10:00 - 13:00	8,364	8,280	99.0	5.99	0.69	6.68	77.6	21.1	1.1	0.2	0.5	43
13:00 - 16:00	8,250	7,977	96.7	6.02	1.01	7.02	74.9	22.5	2.1	0.5	1.3	58
16:00 - 19:00	8,159	7,781	95.4	6.13	1.34	7.47	71.5	24.7	3.3	0.6	1.7	52
19:00 - 22:00	5,478	5,244	95.7	8.74	1.52	10.26	52.5	36.1	8.1	3.3	1.9	80
22:00 - 24:00	3,162	3,101	98.1	9.88	1.26	11.13	49.7	40.2	7.7	2.4	1.0	104
<b>All Locations Summary</b>	<b>43,542</b>	<b>42,255</b>	<b>97.0</b>	<b>6.86</b>	<b>1.07</b>	<b>7.93</b>	<b>69.1</b>	<b>26.5</b>	<b>3.5</b>	<b>0.9</b>	<b>1.1</b>	<b>104</b>

**SUNDAY AND BANK HOLIDAYS**

Time Range	Expected Buses	Observed Buses	Observed Buses (%)	SWT (mins)	EWT (mins)	AWT (mins)	Probability of Waiting < 10 mins (%)	Probability of Waiting 10-20 mins (%)	Probability of Waiting 20-30 mins (%)	Probability of Waiting > 30 mins (%)	Long Gaps (%)	Maximum Gap (mins)
05:00 - 07:00	1,221	1,179	96.6	15.00	0.76	15.76	57.5	18.3	18.3	5.9	2.9	96
07:00 - 10:00	4,714	4,660	98.9	10.86	0.54	11.41	47.9	42.2	8.3	1.5	0.2	79
10:00 - 13:00	5,099	4,992	97.9	9.86	0.87	10.73	49.3	41.7	7.4	1.6	0.5	95
13:00 - 16:00	5,011	4,951	98.8	10.03	0.59	10.62	49.1	42.1	7.2	1.7	0.7	77
16:00 - 19:00	4,921	4,818	97.9	10.04	0.88	10.92	48.5	42.1	8.0	1.4	0.4	84
19:00 - 22:00	5,133	5,047	98.3	9.91	0.68	10.59	49.2	42.6	7.1	1.1	0.3	57
22:00 - 24:00	3,282	3,261	99.4	9.97	0.41	10.38	49.8	43.2	6.5	0.5	0.1	51
<b>All Locations Summary</b>	<b>29,381</b>	<b>28,908</b>	<b>98.4</b>	<b>10.15</b>	<b>0.71</b>	<b>10.86</b>	<b>49.2</b>	<b>41.5</b>	<b>7.7</b>	<b>1.6</b>	<b>0.5</b>	<b>96</b>

**ALL DAYS**

Time Range	Expected Buses	Observed Buses	Observed Buses (%)	SWT (mins)	EWT (mins)	AWT (mins)	Probability of Waiting < 10 mins (%)	Probability of Waiting 10-20 mins (%)	Probability of Waiting 20-30 mins (%)	Probability of Waiting > 30 mins (%)	Long Gaps (%)	Maximum Gap (mins)
05:00 - 07:00	23,498	23,236	98.9	8.87	0.42	9.29	63.5	31.5	4.3	0.8	0.3	96
07:00 - 10:00	55,176	54,178	98.2	6.24	0.64	6.88	76.9	21.4	1.4	0.3	0.5	79
10:00 - 13:00	55,978	55,100	98.4	6.43	0.65	7.08	74.8	23.3	1.7	0.3	0.4	95
13:00 - 16:00	56,480	54,859	97.1	6.38	0.83	7.21	73.8	23.4	2.2	0.5	1.0	82
16:00 - 19:00	55,169	53,594	97.1	6.33	1.18	7.52	71.5	24.8	2.9	0.8	1.6	84
19:00 - 22:00	42,396	41,495	97.9	7.92	1.08	9.00	59.8	33.6	5.3	1.3	1.1	80
22:00 - 24:00	22,197	22,240	100.2	9.88	0.64	10.52	50.2	42.5	6.2	1.1	0.4	118
<b>All Locations Summary</b>	<b>310,894</b>	<b>304,702</b>	<b>98.0</b>	<b>6.77</b>	<b>0.85</b>	<b>7.62</b>	<b>71.0</b>	<b>25.6</b>	<b>2.7</b>	<b>0.6</b>	<b>0.9</b>	<b>118</b>

Transport for London - QSI Points and Live Mileage List

v2.0 - Mileage directly imported from Caesar

**TRANCHE 608**

Route: D8

Service change: 41024

Date: 01/10/2016

Reason for Issue

Re-routing of service in both directions

QSI Points are highlighted

OUT DIRECTION				
Timing Point Code	Stop Number	Stop Name	Metres	Miles
STFDBS	BP974	Stratford Bus Station		
	8019	Stratford Centre	880	0.55
	371	Old Town Hall	127	0.08
	20760	Stratford High St / Carpenters Road	448	0.28
	4897	Warton Road	217	0.13
	2067	Abbey Lane	293	0.18
	4875	Bow Flyover	511	0.32
BOW CH	2062	Bow Church	440	0.27
	35407	St Leonard's Street	332	0.21
	36763	Hancock Road	741	0.46
BOW SN	34412	Bromley By Bow Station	303	0.19
	15592	Twelve Trees Crescent	177	0.11
	34448	St Leonard's Wharf	281	0.17
	34408	Lochnagar Street	230	0.14
	34405	Abbott Road	407	0.25
	BP1351	Blackwall Tunnel	390	0.24
POPRAS	34215	Poplar / All Saints Church	353	0.22
	34214	Poplar High Street / Blackwall	323	0.20
	LE236	Billingsgate Market	604	0.38
	BP5950	Churchill Place	437	0.27
	R0314	Canada Square South	296	0.18
CNWFSN	BP2355	Canary Wharf Station	175	0.11
	BP2356	West India Avenue	307	0.19
	FC30	Heron Quays	391	0.24
	36869	Mastmakers Road	338	0.21
STHQSN	FC98	Admirals Way	194	0.12
	LE168	South Quay Station	371	0.23
	37145	Harbour Exchange Square	104	0.06
	37147	East Ferry Road	173	0.11
	FC08	Crossharbour Station	251	0.16
CHBRAS	OC673	Isle Of Dogs Asda	147	0.09
Total Route Mileage - Out Direction			10241	6.36
			Metres	Miles

BACK DIRECTION				
Timing Point Code	Stop Number	Stop Name	Metres	Miles
CHBRAS	R0752	Crossharbour Asda		
	37148	Crossharbour Station	246	0.15
	37146	Harbour Exchange Square	287	0.18
	LE169	South Quay Station	193	0.12
STHQSN	FC99	Admirals Way	396	0.25
	36870	Mastmakers Road	180	0.11
	FC76	Heron Quays	184	0.11
	LE193	Westferry Circus	428	0.27
	LE186	West India Avenue	279	0.17
CNWFSN	R0315	Canary Wharf Station	295	0.18
	BP3588	Canada Square North	214	0.13
	BP4819	Churchill Place	239	0.15
	LE235	Billingsgate Market	387	0.24
	BP5409	Poplar High Street / Blackwall	516	0.32
POPRAS	35297	Poplar / All Saints Church	283	0.18
	34413	Andrew Street	572	0.36
	34406	St Leonard's Wharf	467	0.29
	34407	Coventry Cross Estate	391	0.24
BOW SN	15589	Bromley By Bow Station	229	0.14
	34447	Grace Street	314	0.20
	34060	Bow Interchange	263	0.16
	2066	Marshgate Lane	457	0.28
	2068	Warton Road	495	0.31
	2070	Stratford High Street / Carpenters Rd	320	0.20
STFDBS	BP5307	Stratford Bus Station	593	0.37
Total Route Mileage - Back Direction			8228	5.11
			Metres	Miles

## **MINI SERVICE SPECIFICATION**

<b>Route Number</b>	D8
<b>Terminus Points</b>	Stratford Bus Station and Crossharbour, Asda
<b>Vehicle Type</b>	Option 1: 55 capacity, dual door, single deck, minimum 10.2m long, subject to a satisfactory route test Option 2: 87 capacity, dual door, double deck, subject to a satisfactory route test
<b>Current Maximum Approved Dimensions</b>	10.2 metres long and 2.44 metres wide

Please supply details of resource and cost changes (in ITT Part 2B and Part 10 format) by Monday 2<sup>nd</sup> November 2015.

## **MINI SERVICE SPECIFICATION**

- 1) MINI SERVICE SPEC - ROUTE SPECIFICATION INFORMATION
- 2) NOTES
- 3) SCHEDULE REQUIREMENTS & PINCHPOINTS
- 4) ROUTE RECORD, IBUS MILEAGE & QSI POINTS

## 2) NOTES

### **Proposed Changes:**

The following alterations (subject to consultation) are proposed for introduction from 1<sup>st</sup> October 2016 in conjunction with Route Nos. 108, 108D & N108 in Tranche 532 of the tendering programme

- Route No. D8 is re-routed to operate between Stratford Bus Station and Crossharbour, Asda.
- Route No. D8 will operate from Great Eastern Road via the existing routeing of Route Nos. 108 & N108 to Stratford High Street to re-join normal line of routeing.
- Route No. D8 is also re-routed from Bow Road via the existing routeing of Route Nos. 108 & N108 to Newby Place to re-join normal line of routeing.
- The two sections of routeing between Stratford International Bus Station and Carpenters Road **AND**; Bow Road (at junction with Bromley High Street) and East India Dock Road are withdrawn and will be served by Route Nos. 108 & N108 which is re-structured in conjunction with Route No. D8. A specification for Route Nos. 108, 108D & N108 has been issued as part of Tranche 532.
- **Please see Section 5 for a full list of streets traversed and standing arrangements.**

Two vehicle options are specified as follows:

### **Option 1**

- No change to current vehicle type. 55 capacity, dual door, single deck, minimum 10.2m long buses are specified, subject to a satisfactory route test.

### **Option 2**

- Conversion of Route No. D8 from 55 capacity, dual door, single deck, minimum 10.2m long buses to 87 capacity, dual door, double deck buses is specified, subject to a satisfactory route test.

### 3) SCHEDULE REQUIREMENTS & PINCHPOINTS

#### 3.1) MONDAY TO FRIDAY SCHEDULE REQUIREMENTS & PINCHPOINTS

Stratford Bus Station to Crossharbour, Asda			Crossharbour, Asda to Stratford Bus Station		
First departure no later than 0450.			First departure no later than 0500.		
0445 - 0530	Every 20 minutes		0455 - 0600	Every 20 minutes	
0531 - 0645	Every 15 minutes		0601 - 0630	Every 15 minutes	
0646 - 1930	Every 12 minutes		0631 - 1925	Every 12 minutes	
1931 - 2045	Every 15 minutes		1926 - 2025	Every 15 minutes	
2046 - 0050	Every 20 minutes		2026 - 0010	Every 20 minutes	
Last departure no earlier than 0045.			Last departure no earlier than 0005.		
<b>Pinchpoints</b>					
Poplar, All Saints Station	0700 - 0900	12 minutes	Bow Church	0700 - 0900	12 minutes
	1505 - 1640	12 minutes		1505 - 1640	12 minutes

#### 3.2) SATURDAY AND GOOD FRIDAY SCHEDULE REQUIREMENTS & PINCHPOINTS

Stratford Bus Station to Crossharbour, Asda			Crossharbour, Asda to Stratford Bus Station		
First departure no later than 0450.			First departure no later than 0500.		
0445 - 0650	Every 20 minutes		0455 - 0800	Every 20 minutes	
0651 - 0835	Every 15 minutes		0801 - 0830	Every 15 minutes	
0836 - 1830	Every 12 minutes		0831 - 1815	Every 12 minutes	
1831 - 1945	Every 15 minutes		1816 - 1945	Every 15 minutes	
1946 - 0050	Every 20 minutes		1946 - 0010	Every 20 minutes	
Last departure no earlier than 0045.			Last departure no earlier than 0005.		
<b>Pinchpoints</b>					
Poplar, All Saints Station	0850 - 1100	12 minutes	Bow Church	0850 - 1100	12 minutes

#### 3.3) SUNDAY AND PUBLIC HOLIDAYS (EXCEPT GOOD FRIDAY AND CHRISTMAS DAY) SCHEDULE REQUIREMENTS & PINCHPOINTS

Stratford Bus Station to Crossharbour, Asda			Crossharbour, Asda to Stratford Bus Station		
First departure no later than 0555.			First departure no later than 0555.		
0550 - 0725	Every 30 minutes		0550 - 0725	Every 30 minutes	
0726 - 0050	Every 20 minutes		0726 - 0010	Every 20 minutes	
Last departure no earlier than 0045.			Last departure no earlier than 0005.		
<b>Pinchpoints</b>					
Poplar, All Saints Station	1010 - 1130	20 minutes	Bow Church	1005 - 1125	20 minutes

Please identify the cost of the Boxing Day element of this service separately.



**4) ROUTE RECORD, IBUS MILEAGE & QSI POINTS**

4.1) ROUTE RECORD

As per Busnet printout.

4.2) IBUS MILEAGE & QSI POINTS

As per current print out.

# LONDON BUSES - ROUTE DESCRIPTION

## ROUTE D8: Stratford Bus Station - Crossharbour, Asda

**Date of Structural Change:** 1 October 2016.

**Date of Service Change:** 1 October 2016.

**Reason for Issue:** New Tender.

### **STREETS TRAVERSED**

**Towards Crossharbour, Asda:** Great Eastern Road, The Grove, Stratford Broadway, Stratford High Street, Bow Interchange, Bow Road, Bromley High Street, Blackwall Tunnel Northern Approach, Bow Interchange, Blackwall Tunnel Northern Approach, Hancock Road, Blackwall Tunnel Northern Approach, Gillender Street, Blackwall Tunnel Northern Approach, Brunswick Road, East India Dock Road, Newby Place, Poplar High Street, Preston's Road, Trafalgar Way, Cartier Circle, Churchill Place, The South Colonnade, Canada Square, The South Colonnade, Cabot Square, West India Avenue, Westferry Circus (Upper Level), Westferry Road, Marsh Wall, Limeharbour, East Ferry Road, Asda Access Road.

**Towards Stratford Bus Station:** Asda Access Road, East Ferry Road, Limeharbour, Marsh Wall, Westferry Road, Westferry Circus (Upper Level), West India Avenue, Cabot Square, The North Colonnade, Canada Square, The North Colonnade, Churchill Place, Cartier Circle, Trafalgar Way, Preston's Road, Poplar High Street, Bazely Street, East India Dock Road, St Leonard's Road, Blackwall Tunnel Northern Approach, St Leonard's Street, Bromley High Street, Blackwall Tunnel Northern Approach, Bow Interchange, Stratford High Street, Great Eastern Road, Station Street.

## **AUTHORISED STANDS, CURTAILMENT POINTS, & BLIND DESCRIPTIONS**

Please note that only stands, curtailment points, & blind descriptions as detailed in this contractual document may be used.

### **STRATFORD BUS STATION, EAST SIDE**

Private stand for 5 buses facing south on east side of Stratford Bus Station on west side of Great Eastern Road.

Buses proceed from Station Street via Stratford Bus Station to stand, departing via Stratford Bus Station to Great Eastern Road. Set down in Station Street, AP (BP5307 - Stratford Bus Station <# [dlr], Last Stop on LOR: 2068 - Warton Road) and pick up in Great Eastern Road, at stop C (BP974 - Stratford Bus Station <#[dlr], First Stop on LOR: 4897 - Warton Road).

AVAILABILITY: At any time.  
OPERATING RESTRICTIONS: No more than 2 buses on Route D8 should be scheduled to stand at any one time.  
MEAL RELIEFS: No meal relief vehicles to stand at any time.  
FERRY VEHICLES: No ferry vehicles to park on stand at any time.  
BLIND DISPLAY: Stratford.

### **BROMLEY-BY-BOW HIGH STREET (from CROSSHARBOUR, ASDA)**

Public stand for one bus on north side of Bromley High Street, commencing at the western end of Alton House and extending 17 metres west.

Buses proceed from St Leonard's Street via Bromley High Street to stand, departing via Bromley High Street, Blackwall Tunnel Northern Approach and Bow Interchange to Bow Road. Set down in St Leonard's Street, at stop U (34447 - Grace Street, Last Stop on LOR: BP5409 - Poplar High Street / Blackwall [dlr]) and pick up in Bow Road, at stop J (2062 - Bow Church, First Stop on LOR: 29981 - Bow Church).

AVAILABILITY: At any time.  
OPERATING RESTRICTIONS: Unscheduled curtailments only.  
MEAL RELIEFS: No meal relief vehicles to stand at any time.  
FERRY VEHICLES: No ferry vehicles to park on stand at any time.  
BLIND DISPLAY: Bromley-By-Bow.

## **POPLAR, ALL SAINTS STATION**

Public stand for 2 buses on west side of Bazely Street commencing approximately 40 metres south of East India Dock Road and extending 20 metres south.

### From Crossharbour, Asda.

Buses proceed from Bazely Street direct to stand, departing via Bazely Street and East India Dock Road to Newby Place. Set down in Bazely Street, at Stop Z (BP782 - Poplar / All Saints Church, Last Stop on LOR: BP5409 - Poplar High Street / Blackwall [dlr]) and pick up in Newby Place, at Stop G (34215 - Poplar / All Saints Church).

### From Stratford Bus Station.

Buses proceed from Poplar High Street via Bazely Street to stand, departing via Bazely Street to East India Dock Road. Set down in Poplar High Street, at Stop T (34214 - Poplar High Street / Blackwall [dlr], Last Stop on LOR: 34214 - Poplar High Street / Blackwall [dlr]) and pick up in East India Dock Road, at Stop A (868 - Bazely Street, First Stop on LOR: 868 - Bazely Street).

AVAILABILITY:	At any time.
OPERATING RESTRICTIONS:	Unscheduled curtailments only.
MEAL RELIEFS:	No meal relief vehicles to stand at any time.
FERRY VEHICLES:	No ferry vehicles to park on stand at any time.
BLIND DISPLAY:	Poplar, All Saints.

## **CANARY WHARF, TRAFALGAR WAY (from CROSSHARBOUR, ASDA)**

Public stand for up to two buses on southbound carriageway of Trafalgar Way, 149 metres south of Broadwalk Place and 204 metres north of Cartier Circle.

Buses proceed from Trafalgar Way direct to stand, departing via Trafalgar Way, Cartier Circle, Churchill Place and The South Colonnade to Canada Square. Set down in Trafalgar Way (LE235 - Billingsgate Market, Last Stop on LOR: LE235 - Billingsgate Market) and pick up in Canada Square, at Stop J (R0314 - Canada Square South).

AVAILABILITY:	At any time.
OPERATING RESTRICTIONS:	Unscheduled curtailments only
MEAL RELIEFS:	No meal relief vehicles to stand at any time.
FERRY VEHICLES:	No ferry vehicles to park on stand at any time.
BLIND DISPLAY:	Canary Wharf.

## **CROSSHARBOUR, ASDA**

Private stand for 5 buses in marked bays in Asda car park.

Additional overflow stand for 2 buses on west side of East Ferry Road, between entrance and exit of Asda store.

Buses proceed from Asda Access Road direct to stand, departing to Asda Access Road. Set down in Asda Access Road (OC673 - Isle Of Dogs Asda, Last Stop on LOR: OC673 - Isle Of Dogs Asda) and pick up in Asda Access Road, at Stop CE (R0752 - Crossharbour Asda, First Stop on LOR: R0752 - Crossharbour Asda).

AVAILABILITY:	At any time.
OPERATING RESTRICTIONS:	No more than 2 buses on Route D8 should be scheduled to stand at any one time.
MEAL RELIEFS:	No meal relief vehicles to stand at any time.
FERRY VEHICLES:	No ferry vehicles to park on stand at any time.
BLIND DISPLAY:	Crossharbour.
OTHER INFORMATION:	Toilet facilities available in Asda on Mondays to Saturdays between 0730 and 2200 and on Sundays between 1000 and 1600.

## Transport for London - QSI Points and Live Mileage List

Route D8 (108 routing north of Poplar)

Service change 37534

Date 29/11/2014

Reason for Issue
------------------

QSI Points are highlighted.

OUT DIRECTION				
Timing Point Code	Stop Number	Stop Name	Metres	Miles
STFDBS	BP974	Stratford Bus Station		
	8019	Stratford Centre	887	0.55
	371	Old Town Hall	122	0.08
	20760	Stratford High St / Carpenters Road	447	0.28
	4897	Warton Road	217	0.13
	2067	Abbey Lane	293	0.18
	4875	Bow Flyover	509	0.32
BOW CH	2062	Bow Church	440	0.27
	35407	St Leonard's Street	332	0.21
	36763	Hancock Road	741	0.46
BOW SN	34412	Bromley By Bow Station	303	0.19
	15592	Twelvetrees Crescent	177	0.11
	34448	St Leonard's Wharf	281	0.17
	34408	Lochnagar Street	230	0.14
POPRAR	34405	Abbott Road	407	0.25
POPRAS	34215	Poplar / All Saints Church	750	0.46
	34214	Poplar High Street / Blackwall	323	0.20
	LE236	Billingsgate Market	604	0.38
	BP5950	Churchill Place	437	0.27
	R0314	Canada Square South	300	0.19
CNWFSN	BP2355	Canary Wharf Station	175	0.11
	BP2356	Westferry Circus	307	0.19
	FC30	Heron Quays	391	0.24
	36869	The International Hotel	338	0.21
STHQSN	FC98	Admirals Way	194	0.12
	LE168	South Quay Station	371	0.23
	37145	Harbour Exchange Square	104	0.06
	37147	East Ferry Road	173	0.11
	FC08	Crossharbour Station	251	0.16
CHBRAS	OC673	Isle Of Dogs Asda	147	0.09
Total Route Mileage - Out Direction			10251	6.37
			Metres	Miles

**Mileages in red font are planning estimates & not ibus calculations.**

**Mileages in purple font have been extracted from Route Nos. 108 & N108.**

**FINAL MILEAGE TO BE CONFIRMED.**

<b>TRANCHE 532</b>
--------------------

<b>Permanent rerouting via Carpenters Road</b>
--

<b>BACK DIRECTION</b>				
<b>Timing Point Code</b>	<b>Stop Number</b>	<b>Stop Name</b>	<b>Metres</b>	<b>Miles</b>
<b>CHBRAS</b>	<b>R0752</b>	<b>Crossharbour Asda</b>		
	37148	Crossharbour Station	246	0.15
	37146	Harbour Exchange Square	287	0.18
	LE169	South Quay Station	193	0.12
<b>STHQSN</b>	<b>FC99</b>	<b>Admirals Way</b>	<b>396</b>	<b>0.25</b>
	36870	The International Hotel	180	0.11
	FC76	Heron Quays	184	0.11
	LE193	Westferry Circus	375	0.23
	LE186	Cabot Square	285	0.18
<b>CNWFSN</b>	<b>R0315</b>	<b>Canary Wharf Station</b>	<b>295</b>	<b>0.18</b>
	BP3588	Canada Square North	214	0.13
	BP4819	Churchill Place	239	0.15
	LE235	Billingsgate Market	387	0.24
	BP5409	Poplar High Street / Blackwall	516	0.32
<b>POPRAS</b>	<b>BP782</b>	<b>Poplar / All Saints Church</b>	<b>266</b>	<b>0.17</b>
POPRAR	34413	Andrew Street	<b>630</b>	<b>0.39</b>
	34406	St Leonard's Wharf	<b>467</b>	<b>0.29</b>
	34407	Coventry Cross Estate	<b>391</b>	<b>0.24</b>
<b>BOW SN</b>	<b>15589</b>	<b>Bromley By Bow Station</b>	<b>229</b>	<b>0.14</b>
	34447	Grace Street	<b>314</b>	<b>0.20</b>
	34060	Bow Interchange	<b>263</b>	<b>0.16</b>
	2066	Marshgate Lane	<b>464</b>	<b>0.29</b>
	2068	Warton Road	<b>488</b>	<b>0.30</b>
	2070	Stratford High St Stn / Carpenters Road	<b>320</b>	<b>0.20</b>
STFDBS	BP5307	Stratford Bus Station	<b>593</b>	<b>0.37</b>

Total Route Mileage - Back Direction

**8222****5.11**

Metres

Miles

**Mileages in red font are planning estimates & not ibus calculations.**

**Mileages in purple font have been extracted from Route Nos. 108 & N108.**

**Bus stop number BP782 is served by Route No. D7.**

**FINAL MILEAGE TO BE CONFIRMED.**

## **MINI SERVICE SPECIFICATION**

<b>Route Number</b>	D8
<b>Terminus Points</b>	Stratford Bus Station and Crossharbour, Asda
<b>Vehicle Type</b>	Option 1: 55 capacity, dual door, single deck, minimum 10.2m long, subject to a satisfactory route test Option 2: 87 capacity, dual door, double deck, subject to a satisfactory route test
<b>Current Maximum Approved Dimensions</b>	10.2 metres long and 2.44 metres wide

Please supply details of resource and cost changes (in ITT Part 2B and Part 10 format) by Monday 2<sup>nd</sup> November 2015.

## **MINI SERVICE SPECIFICATION**

- 1) MINI SERVICE SPEC - ROUTE SPECIFICATION INFORMATION
- 2) NOTES
- 3) SCHEDULE REQUIREMENTS & PINCHPOINTS
- 4) ROUTE RECORD, IBUS MILEAGE & QSI POINTS



## 2) NOTES

### **Proposed Changes:**

The following alterations (subject to consultation) are proposed for introduction from 1<sup>st</sup> October 2016 in conjunction with Route Nos. 108, 108D & N108 in Tranche 532 of the tendering programme

- Route No. D8 is re-routed to operate between Stratford Bus Station and Crossharbour, Asda.
- Route No. D8 will operate from Great Eastern Road via the existing routeing of Route Nos. 108 & N108 to Stratford High Street to re-join normal line of routeing.
- Route No. D8 is also re-routed from Bow Road via the existing routeing of Route Nos. 108 & N108 to Newby Place to re-join normal line of routeing.
- The two sections of routeing between Stratford International Bus Station and Carpenters Road **AND**; Bow Road (at junction with Bromley High Street) and East India Dock Road are withdrawn and will be served by Route Nos. 108 & N108 which is re-structured in conjunction with Route No. D8. A specification for Route Nos. 108, 108D & N108 has been issued as part of Tranche 532.
- **Please see Section 5 for a full list of streets traversed and standing arrangements.**

Two vehicle options are specified as follows:

### **Option 1**

- No change to current vehicle type. 55 capacity, dual door, single deck, minimum 10.2m long buses are specified, subject to a satisfactory route test.

### **Option 2**

- Conversion of Route No. D8 from 55 capacity, dual door, single deck, minimum 10.2m long buses to 87 capacity, dual door, double deck buses is specified, subject to a satisfactory route test.

### 3) SCHEDULE REQUIREMENTS & PINCHPOINTS

#### 3.1) MONDAY TO FRIDAY SCHEDULE REQUIREMENTS & PINCHPOINTS

Stratford Bus Station to Crossharbour, Asda			Crossharbour, Asda to Stratford Bus Station		
First departure no later than 0450.			First departure no later than 0500.		
0445 - 0530	Every 20 minutes		0455 - 0600	Every 20 minutes	
0531 - 0645	Every 15 minutes		0601 - 0630	Every 15 minutes	
0646 - 1930	Every 12 minutes		0631 - 1925	Every 12 minutes	
1931 - 2045	Every 15 minutes		1926 - 2025	Every 15 minutes	
2046 - 0050	Every 20 minutes		2026 - 0010	Every 20 minutes	
Last departure no earlier than 0045.			Last departure no earlier than 0005.		
<b>Pinchpoints</b>					
Poplar, All Saints Station	0700 - 0900	12 minutes	Bow Church	0700 - 0900	12 minutes
	1505 - 1640	12 minutes		1505 - 1640	12 minutes

#### 3.2) SATURDAY AND GOOD FRIDAY SCHEDULE REQUIREMENTS & PINCHPOINTS

Stratford Bus Station to Crossharbour, Asda			Crossharbour, Asda to Stratford Bus Station		
First departure no later than 0450.			First departure no later than 0500.		
0445 - 0650	Every 20 minutes		0455 - 0800	Every 20 minutes	
0651 - 0835	Every 15 minutes		0801 - 0830	Every 15 minutes	
0836 - 1830	Every 12 minutes		0831 - 1815	Every 12 minutes	
1831 - 1945	Every 15 minutes		1816 - 1945	Every 15 minutes	
1946 - 0050	Every 20 minutes		1946 - 0010	Every 20 minutes	
Last departure no earlier than 0045.			Last departure no earlier than 0005.		
<b>Pinchpoints</b>					
Poplar, All Saints Station	0850 - 1100	12 minutes	Bow Church	0850 - 1100	12 minutes

#### 3.3) SUNDAY AND PUBLIC HOLIDAYS (EXCEPT GOOD FRIDAY AND CHRISTMAS DAY) SCHEDULE REQUIREMENTS & PINCHPOINTS

Stratford Bus Station to Crossharbour, Asda			Crossharbour, Asda to Stratford Bus Station		
First departure no later than 0555.			First departure no later than 0555.		
0550 - 0725	Every 30 minutes		0550 - 0725	Every 30 minutes	
0726 - 0050	Every 20 minutes		0726 - 0010	Every 20 minutes	
Last departure no earlier than 0045.			Last departure no earlier than 0005.		
<b>Pinchpoints</b>					
Poplar, All Saints Station	1010 - 1130	20 minutes	Bow Church	1005 - 1125	20 minutes

Please identify the cost of the Boxing Day element of this service separately.

**4) ROUTE RECORD, IBUS MILEAGE & QSI POINTS**

**4.1) ROUTE RECORD**

As per Busnet printout.

**4.2) IBUS MILEAGE & QSI POINTS**

As per current print out.

# LONDON BUSES - ROUTE DESCRIPTION

## ROUTE D8: Stratford Bus Station - Crossharbour, Asda

**Date of Structural Change:** 1 October 2016.

**Date of Service Change:** 1 October 2016.

**Reason for Issue:** New Tender.

### **STREETS TRAVERSED**

**Towards Crossharbour, Asda:** Great Eastern Road, The Grove, Stratford Broadway, Stratford High Street, Bow Interchange, Bow Road, Bromley High Street, Blackwall Tunnel Northern Approach, Bow Interchange, Blackwall Tunnel Northern Approach, Hancock Road, Blackwall Tunnel Northern Approach, Gillender Street, Blackwall Tunnel Northern Approach, Brunswick Road, East India Dock Road, Newby Place, Poplar High Street, Preston's Road, Trafalgar Way, Cartier Circle, Churchill Place, The South Colonnade, Canada Square, The South Colonnade, Cabot Square, West India Avenue, Westferry Circus (Upper Level), Westferry Road, Marsh Wall, Limeharbour, East Ferry Road, Asda Access Road.

**Towards Stratford Bus Station:** Asda Access Road, East Ferry Road, Limeharbour, Marsh Wall, Westferry Road, Westferry Circus (Upper Level), West India Avenue, Cabot Square, The North Colonnade, Canada Square, The North Colonnade, Churchill Place, Cartier Circle, Trafalgar Way, Preston's Road, Poplar High Street, Bazely Street, East India Dock Road, St Leonard's Road, Blackwall Tunnel Northern Approach, St Leonard's Street, Bromley High Street, Blackwall Tunnel Northern Approach, Bow Interchange, Stratford High Street, Great Eastern Road, Station Street.

## **AUTHORISED STANDS, CURTAILMENT POINTS, & BLIND DESCRIPTIONS**

Please note that only stands, curtailment points, & blind descriptions as detailed in this contractual document may be used.

### **STRATFORD BUS STATION, EAST SIDE**

Private stand for 5 buses facing south on east side of Stratford Bus Station on west side of Great Eastern Road.

Buses proceed from Station Street via Stratford Bus Station to stand, departing via Stratford Bus Station to Great Eastern Road. Set down in Station Street, AP (BP5307 - Stratford Bus Station <# [dlr], Last Stop on LOR: 2068 - Warton Road) and pick up in Great Eastern Road, at stop C (BP974 - Stratford Bus Station <#[dlr], First Stop on LOR: 4897 - Warton Road).

AVAILABILITY: At any time.  
OPERATING RESTRICTIONS: No more than 2 buses on Route D8 should be scheduled to stand at any one time.  
MEAL RELIEFS: No meal relief vehicles to stand at any time.  
FERRY VEHICLES: No ferry vehicles to park on stand at any time.  
BLIND DISPLAY: Stratford.

### **BROMLEY-BY-BOW HIGH STREET (from CROSSHARBOUR, ASDA)**

Public stand for one bus on north side of Bromley High Street, commencing at the western end of Alton House and extending 17 metres west.

Buses proceed from St Leonard's Street via Bromley High Street to stand, departing via Bromley High Street, Blackwall Tunnel Northern Approach and Bow Interchange to Bow Road. Set down in St Leonard's Street, at stop U (34447 - Grace Street, Last Stop on LOR: BP5409 - Poplar High Street / Blackwall [dlr]) and pick up in Bow Road, at stop J (2062 - Bow Church, First Stop on LOR: 29981 - Bow Church).

AVAILABILITY: At any time.  
OPERATING RESTRICTIONS: Unscheduled curtailments only.  
MEAL RELIEFS: No meal relief vehicles to stand at any time.  
FERRY VEHICLES: No ferry vehicles to park on stand at any time.  
BLIND DISPLAY: Bromley-By-Bow.

## **POPLAR, ALL SAINTS STATION**

Public stand for 2 buses on west side of Bazely Street commencing approximately 40 metres south of East India Dock Road and extending 20 metres south.

### From Crossharbour, Asda.

Buses proceed from Bazely Street direct to stand, departing via Bazely Street and East India Dock Road to Newby Place. Set down in Bazely Street, at Stop Z (BP782 - Poplar / All Saints Church, Last Stop on LOR: BP5409 - Poplar High Street / Blackwall [dlr]) and pick up in Newby Place, at Stop G (34215 - Poplar / All Saints Church).

### From Stratford Bus Station.

Buses proceed from Poplar High Street via Bazely Street to stand, departing via Bazely Street to East India Dock Road. Set down in Poplar High Street, at Stop T (34214 - Poplar High Street / Blackwall [dlr], Last Stop on LOR: 34214 - Poplar High Street / Blackwall [dlr]) and pick up in East India Dock Road, at Stop A (868 - Bazely Street, First Stop on LOR: 868 - Bazely Street).

AVAILABILITY:	At any time.
OPERATING RESTRICTIONS:	Unscheduled curtailments only.
MEAL RELIEFS:	No meal relief vehicles to stand at any time.
FERRY VEHICLES:	No ferry vehicles to park on stand at any time.
BLIND DISPLAY:	Poplar, All Saints.

## **CANARY WHARF, TRAFALGAR WAY (from CROSSHARBOUR, ASDA)**

Public stand for up to two buses on southbound carriageway of Trafalgar Way, 149 metres south of Broadwalk Place and 204 metres north of Cartier Circle.

Buses proceed from Trafalgar Way direct to stand, departing via Trafalgar Way, Cartier Circle, Churchill Place and The South Colonnade to Canada Square. Set down in Trafalgar Way (LE235 - Billingsgate Market, Last Stop on LOR: LE235 - Billingsgate Market) and pick up in Canada Square, at Stop J (R0314 - Canada Square South).

AVAILABILITY:	At any time.
OPERATING RESTRICTIONS:	Unscheduled curtailments only
MEAL RELIEFS:	No meal relief vehicles to stand at any time.
FERRY VEHICLES:	No ferry vehicles to park on stand at any time.
BLIND DISPLAY:	Canary Wharf.

## **CROSSHARBOUR, ASDA**

Private stand for 5 buses in marked bays in Asda car park.

Additional overflow stand for 2 buses on west side of East Ferry Road, between entrance and exit of Asda store.

Buses proceed from Asda Access Road direct to stand, departing to Asda Access Road. Set down in Asda Access Road (OC673 - Isle Of Dogs Asda, Last Stop on LOR: OC673 - Isle Of Dogs Asda) and pick up in Asda Access Road, at Stop CE (R0752 - Crossharbour Asda, First Stop on LOR: R0752 - Crossharbour Asda).

AVAILABILITY:	At any time.
OPERATING RESTRICTIONS:	No more than 2 buses on Route D8 should be scheduled to stand at any one time.
MEAL RELIEFS:	No meal relief vehicles to stand at any time.
FERRY VEHICLES:	No ferry vehicles to park on stand at any time.
BLIND DISPLAY:	Crossharbour.
OTHER INFORMATION:	Toilet facilities available in Asda on Mondays to Saturdays between 0730 and 2200 and on Sundays between 1000 and 1600.

## Transport for London - QSI Points and Live Mileage List

Route D8 (108 routing north of Poplar)

Service change 37534

Date 29/11/2014

Reason for Issue
------------------

QSI Points are highlighted.

OUT DIRECTION				
Timing Point Code	Stop Number	Stop Name	Metres	Miles
STFDBS	BP974	Stratford Bus Station		
	8019	Stratford Centre	887	0.55
	371	Old Town Hall	122	0.08
	20760	Stratford High St / Carpenters Road	447	0.28
	4897	Warton Road	217	0.13
	2067	Abbey Lane	293	0.18
	4875	Bow Flyover	509	0.32
BOW CH	2062	Bow Church	440	0.27
	35407	St Leonard's Street	332	0.21
	36763	Hancock Road	741	0.46
BOW SN	34412	Bromley By Bow Station	303	0.19
	15592	Twelvetrees Crescent	177	0.11
	34448	St Leonard's Wharf	281	0.17
	34408	Lochnagar Street	230	0.14
POPRAR	34405	Abbott Road	407	0.25
POPRAS	34215	Poplar / All Saints Church	750	0.46
	34214	Poplar High Street / Blackwall	323	0.20
	LE236	Billingsgate Market	604	0.38
	BP5950	Churchill Place	437	0.27
	R0314	Canada Square South	300	0.19
CNWFSN	BP2355	Canary Wharf Station	175	0.11
	BP2356	Westferry Circus	307	0.19
	FC30	Heron Quays	391	0.24
	36869	The International Hotel	338	0.21
STHQSN	FC98	Admirals Way	194	0.12
	LE168	South Quay Station	371	0.23
	37145	Harbour Exchange Square	104	0.06
	37147	East Ferry Road	173	0.11
	FC08	Crossharbour Station	251	0.16
CHBRAS	OC673	Isle Of Dogs Asda	147	0.09
Total Route Mileage - Out Direction			10251	6.37
			Metres	Miles

**Mileages in red font are planning estimates & not ibus calculations.**

**Mileages in purple font have been extracted from Route Nos. 108 & N108.**

**FINAL MILEAGE TO BE CONFIRMED.**



<b>TRANCHE 532</b>
--------------------

<b>Permanent rerouting via Carpenters Road</b>
--

<b>BACK DIRECTION</b>				
<b>Timing Point Code</b>	<b>Stop Number</b>	<b>Stop Name</b>	<b>Metres</b>	<b>Miles</b>
<b>CHBRAS</b>	<b>R0752</b>	<b>Crossharbour Asda</b>		
	37148	Crossharbour Station	246	0.15
	37146	Harbour Exchange Square	287	0.18
	LE169	South Quay Station	193	0.12
<b>STHQSN</b>	<b>FC99</b>	<b>Admirals Way</b>	<b>396</b>	<b>0.25</b>
	36870	The International Hotel	180	0.11
	FC76	Heron Quays	184	0.11
	LE193	Westferry Circus	375	0.23
	LE186	Cabot Square	285	0.18
<b>CNWFSN</b>	<b>R0315</b>	<b>Canary Wharf Station</b>	<b>295</b>	<b>0.18</b>
	BP3588	Canada Square North	214	0.13
	BP4819	Churchill Place	239	0.15
	LE235	Billingsgate Market	387	0.24
	BP5409	Poplar High Street / Blackwall	516	0.32
<b>POPRAS</b>	<b>BP782</b>	<b>Poplar / All Saints Church</b>	<b>266</b>	<b>0.17</b>
POPRAR	34413	Andrew Street	<b>630</b>	<b>0.39</b>
	34406	St Leonard's Wharf	<b>467</b>	<b>0.29</b>
	34407	Coventry Cross Estate	<b>391</b>	<b>0.24</b>
<b>BOW SN</b>	<b>15589</b>	<b>Bromley By Bow Station</b>	<b>229</b>	<b>0.14</b>
	34447	Grace Street	<b>314</b>	<b>0.20</b>
	34060	Bow Interchange	<b>263</b>	<b>0.16</b>
	2066	Marshgate Lane	<b>464</b>	<b>0.29</b>
	2068	Warton Road	<b>488</b>	<b>0.30</b>
	2070	Stratford High St Stn / Carpenters Road	<b>320</b>	<b>0.20</b>
STFDBS	BP5307	Stratford Bus Station	<b>593</b>	<b>0.37</b>

Total Route Mileage - Back Direction

**8222****5.11**

Metres

Miles

**Mileages in red font are planning estimates & not ibus calculations.**

**Mileages in purple font have been extracted from Route Nos. 108 & N108.**

**Bus stop number BP782 is served by Route No. D7.**

**FINAL MILEAGE TO BE CONFIRMED.**

## MINI SERVICE SPECIFICATION

<b>Route Number</b>	D8
<b>Terminus Points</b>	<b>From 31<sup>st</sup> August 2013:</b> Stratford International Bus Station and Crossharbour, Asda ( <b>via Warton Road</b> ) <b>From 3<sup>rd</sup> May 2014:</b> Stratford International Bus Station and Crossharbour, Asda ( <b>via Carpenters Road</b> )
<b>Minimum Performance Standard (both routeings)</b>	Average Excess Wait Time - No more than 0.90 minutes
<b>Extension Threshold (both routeings)</b>	Average Excess Wait Time Threshold - 0.80 minutes
<b>Minimum Operated Mileage Standard (both routeings)</b>	No less than 98.00%

## MINI SERVICE SPECIFICATION

- 1) MINI SERVICE SPEC - ROUTE SPECIFICATION INFORMATION
- 2) NOTES
- 3) OPERATIONAL CONSIDERATIONS
- 4) ROUTE RECORD AND IBUS MILEAGE & QSI POINTS (**for both routeings commencing from 31<sup>st</sup> August 2013 & 3<sup>rd</sup> May 2014**)

## 2) NOTES

### Proposed Changes:

The following alterations are proposed for introduction:

- **From 31<sup>st</sup> August 2013**, Route No. D8 is re-structured to operate between Stratford International Bus Station and Crossharbour, Asda. Route No. D8 will operate from Stratford International Bus Station via International Way, Montfichet Road and Warton Road to Stratford High Street to re-join line of routeing.
- **Buses will not enter Stratford City Bus Station and will serve stop X towards Crossharbour, Asda and stop U towards Stratford International Bus Station.**
- **From provisionally 3<sup>rd</sup> May 2014**, Route No. D8 is also re-routed from Montfichet Road via Private road in Olympic park outside Aquatics Centre and Carpenters Road to Stratford High Street to rejoin current line of routeing. This is to better serve the Aquatics Centre, Orbit and main stadium. **This re-routeing has been delayed pending the delivery of Montfichet link road which is due in Spring 2014 and will be subject to a route test.**
- **Please note, the routeing commencing from 3<sup>rd</sup> May 2014 was specified in the minispec issued in November 2012 but via Stratford City Bus Station. Buses will not enter Stratford City Bus Station as stated above. Therefore, a revised route record and ibus mileage & QSI points sheet is included in Section 4.**
- **Please see Section 4 for a full list of streets traversed and standing arrangements for both routeings from 31<sup>st</sup> August 2013 and 3<sup>rd</sup> May 2014.**
- For the routeing commencing from **31<sup>st</sup> August 2013**, it is expected that the **maximum** running time increase will be approximately 4 minutes per return journey. This should reduce during off peak times.

## 3) OPERATIONAL CONSIDERATIONS

- 3.1) The Queen Elizabeth Olympic Park is still being transformed into its legacy state. Roadworks associated with this might be expected.
  - 3.2) The Queen Elizabeth Olympic Park will be home to a number of major events e.g. Ride London. It may be necessary to close roads to accommodate these events.
- ### 4) ROUTE RECORD AND IBUS MILEAGE & QSI POINTS (for both routeings commencing from 31<sup>st</sup> August 2013 and 3<sup>rd</sup> May 2014)
- 4.1) ROUTE RECORD  
As per Busnet Printout.
  - 4.2) IBUS MILEAGE & QSI POINTS  
As per current print out.

## LONDON BUSES - ROUTE DESCRIPTION

### **ROUTE D8: Stratford International Bus Station - Crossharbour, Asda**

**Date of Structural Change:** 31 August 2013.

**Date of Service Change:** 31 August 2013.

**Reason for Issue:** Route extended to Stratford International Bus Station.

#### **STREETS TRAVERSED**

**Towards Crossharbour, Asda:** Stratford International Bus Station, International Way, Montfichet Road, Warton Road, Stratford High Street, Bow Interchange, Bow Road, Campbell Road, Devons Road, Violet Road, Morris Road, Chrisp Street, East India Dock Road, Newby Place, Poplar High Street, Preston's Road, Trafalgar Way, Cartier Circle, Churchill Place, The South Colonnade, Canada Square, The South Colonnade, Cabot Square, West India Avenue, Westferry Circus (Upper Level), Westferry Road, Marsh Wall, Limeharbour, East Ferry Road, Asda Access Road.

**Towards Stratford International Bus Station:** Asda Access Road, East Ferry Road, Limeharbour, Marsh Wall, Westferry Road, Westferry Circus (Upper Level), West India Avenue, Cabot Square, The North Colonnade, Canada Square, The North Colonnade, Churchill Place, Cartier Circle, Trafalgar Way, Preston's Road, Poplar High Street, Bazely Street, East India Dock Road, Chrisp Street, Morris Road, Violet Road, Devons Road, Campbell Road, Bow Road, Bow Interchange, Stratford High Street, Warton Road, Montfichet Road, International Way, Stratford International Bus Station.

## **AUTHORISED STANDS, CURTAILMENT POINTS, & BLIND DESCRIPTIONS**

Please note that only stands, curtailment points, & blind descriptions as detailed in this contractual document may be used.

### **STRATFORD INTERNATIONAL BUS STATION**

Private stand in Stratford International Bus Station. Definition to be supplied.  
Buses proceed from Stratford International Bus Station direct to stand, departing to Stratford International Bus Station. Set down on stand, on stand, Last Stop on LOR: BP5605 - Stratford City Bus Station) and pick up on stand, on stand, First Stop on LOR: 2067 - Abbey Lane).

AVAILABILITY: At any time.  
OPERATING RESTRICTIONS: No more than 2 buses on Route D8 should be scheduled to stand at any one time.  
MEAL RELIEFS: No meal relief vehicles to stand at any time.  
FERRY VEHICLES: No ferry vehicles to park on stand at any time.  
BLIND DISPLAY: Stratford International.  
OTHER INFORMATION: Toilet facilities to be confirmed.

### **BOW CHURCH (from CROSSHARBOUR, ASDA)**

Public stand for two buses on south side of Bow Road opposite Bow Church, at Stop L. Buses proceed from Bow Road via Bow Interchange and Bow Road to stand, departing to Bow Road. Set down in Bow Road, at Stop M (348 - Bow Flyover, Last Stop on LOR: 348 - Bow Flyover) and pick up in Bow Road, at Stop K (29981 - Bow Church, First Stop on LOR: 29981 - Bow Church).

AVAILABILITY: At any time.  
OPERATING RESTRICTIONS: Unscheduled curtailments only  
MEAL RELIEFS: No meal relief vehicles to stand at any time.  
FERRY VEHICLES: No ferry vehicles to park on stand at any time.  
BLIND DISPLAY: Bow Church.

## **POPLAR, ALL SAINTS STATION**

Public stand for 2 buses on west side of Bazely Street commencing approximately 40 metres south of East India Dock Road and extending 20 metres south.

### From Crossharbour, Asda.

Buses proceed from Bazely Street direct to stand, departing via Bazely Street and East India Dock Road to Newby Place. Set down in Bazely Street, at Stop Z (BP782 - Poplar / All Saints Church, Last Stop on LOR: BP5409 - Poplar High Street / Blackwall [dlr]) and pick up in Newby Place, at Stop G (34215 - Poplar / All Saints Church, First Stop on LOR: 34215 - Poplar / All Saints Church).

### From Stratford International Bus Station.

Buses proceed from Poplar High Street via Bazely Street to stand, departing via Bazely Street to East India Dock Road. Set down in Poplar High Street, at Stop T (34214 - Poplar High Street / Blackwall [dlr], Last Stop on LOR: 34214 - Poplar High Street / Blackwall [dlr]) and pick up in East India Dock Road, at Stop A (868 - Bazely Street, First Stop on LOR: 868 - Bazely Street).

AVAILABILITY:	At any time.
OPERATING RESTRICTIONS:	Unscheduled curtailments only.
MEAL RELIEFS:	No meal relief vehicles to stand at any time.
FERRY VEHICLES:	No ferry vehicles to park on stand at any time.
BLIND DISPLAY:	Poplar, All Saints.

## **CANARY WHARF, TRAFALGAR WAY (from CROSSHARBOUR, ASDA)**

Public stand for up to two buses on southbound carriageway of Trafalgar Way, 149 metres south of Broadwalk Place and 204 metres north of Cartier Circle.

Buses proceed from Trafalgar Way direct to stand, departing via Trafalgar Way, Cartier Circle, Churchill Place and The South Colonnade to Canada Square. Set down in Trafalgar Way (LE235 - Billingsgate Market, Last Stop on LOR: LE235 - Billingsgate Market) and pick up in Canada Square, at Stop J (R0314 - Canada Square South).

AVAILABILITY:	At any time.
OPERATING RESTRICTIONS:	Unscheduled curtailments only
MEAL RELIEFS:	No meal relief vehicles to stand at any time.
FERRY VEHICLES:	No ferry vehicles to park on stand at any time.
BLIND DISPLAY:	Canary Wharf.

## **CROSSHARBOUR, ASDA**

Private stand for 5 buses in marked bays in Asda car park.

Additional overflow stand for 2 buses on west side of East Ferry Road, between entrance and exit of Asda store.

Buses proceed from Asda Access Road direct to stand, departing to Asda Access Road. Set down in Asda Access Road (OC673 - Isle Of Dogs Asda, Last Stop on LOR: OC673 - Isle Of Dogs Asda) and pick up in Asda Access Road, at Stop CE (R0752 - Crossharbour Asda, First Stop on LOR: R0752 - Crossharbour Asda).

AVAILABILITY:	At any time.
OPERATING RESTRICTIONS:	No more than 2 buses on Route D8 should be scheduled to stand at any one time.
MEAL RELIEFS:	No meal relief vehicles to stand at any time.
FERRY VEHICLES:	No ferry vehicles to park on stand at any time.
BLIND DISPLAY:	Crossharbour.
OTHER INFORMATION:	Toilet facilities available in Asda on Mondays to Saturdays between 0730 and 2200 and on Sundays between 1000 and 1600.

## LONDON BUSES - ROUTE DESCRIPTION

### ROUTE D8: Stratford International Bus Station - Crossharbour, Asda

**Date of Structural Change:** 3 May 2014.

**Date of Service Change:** 3 May 2014.

**Reason for Issue:** Route restructured to serve Olympic Park.

#### **STREETS TRAVERSED**

**Towards Crossharbour, Asda:** Stratford International Bus Station, International Way, Montfichet Road, Aquatics Centre, Carpenters Road, Stratford High Street, Bow Interchange, Bow Road, Campbell Road, Devons Road, Violet Road, Morris Road, Chrisp Street, East India Dock Road, Newby Place, Poplar High Street, Preston's Road, Trafalgar Way, Cartier Circle, Churchill Place, The South Colonnade, Canada Square, The South Colonnade, Cabot Square, West India Avenue, Westferry Circus (Upper Level), Westferry Road, Marsh Wall, Limeharbour, East Ferry Road, Asda Access Road.

**Towards Stratford International Bus Station:** Asda Access Road, East Ferry Road, Limeharbour, Marsh Wall, Westferry Road, Westferry Circus (Upper Level), West India Avenue, Cabot Square, The North Colonnade, Canada Square, The North Colonnade, Churchill Place, Cartier Circle, Trafalgar Way, Preston's Road, Poplar High Street, Bazely Street, East India Dock Road, Chrisp Street, Morris Road, Violet Road, Devons Road, Campbell Road, Bow Road, Bow Interchange, Stratford High Street, Carpenters Road, Aquatics Centre, Montfichet Road, International Way, Stratford International Bus Station.



## **AUTHORISED STANDS, CURTAILMENT POINTS, & BLIND DESCRIPTIONS**

Please note that only stands, curtailment points, & blind descriptions as detailed in this contractual document may be used.

### **STRATFORD INTERNATIONAL BUS STATION**

Private stand in Stratford International Bus Station. Definition to be supplied.  
Buses proceed from Stratford International Bus Station direct to stand, departing to Stratford International Bus Station. Set down on stand, on stand, Last Stop on LOR: BP5605 - Stratford City Bus Station) and pick up on stand, on stand, First Stop on LOR: 2067 - Abbey Lane).

AVAILABILITY: At any time.  
OPERATING RESTRICTIONS: No more than 2 buses on Route D8 should be scheduled to stand at any one time.  
MEAL RELIEFS: No meal relief vehicles to stand at any time.  
FERRY VEHICLES: No ferry vehicles to park on stand at any time.  
BLIND DISPLAY: Stratford International.  
OTHER INFORMATION: Toilet facilities to be confirmed.

### **BOW CHURCH (from CROSSHARBOUR, ASDA)**

Public stand for two buses on south side of Bow Road opposite Bow Church, at Stop L. Buses proceed from Bow Road via Bow Interchange and Bow Road to stand, departing to Bow Road. Set down in Bow Road, at Stop M (348 - Bow Flyover, Last Stop on LOR: 348 - Bow Flyover) and pick up in Bow Road, at Stop K (29981 - Bow Church, First Stop on LOR: 29981 - Bow Church).

AVAILABILITY: At any time.  
OPERATING RESTRICTIONS: Unscheduled curtailments only  
MEAL RELIEFS: No meal relief vehicles to stand at any time.  
FERRY VEHICLES: No ferry vehicles to park on stand at any time.  
BLIND DISPLAY: Bow Church.

## **POPLAR, ALL SAINTS STATION**

Public stand for 2 buses on west side of Bazely Street commencing approximately 40 metres south of East India Dock Road and extending 20 metres south.

### From Crossharbour, Asda.

Buses proceed from Bazely Street direct to stand, departing via Bazely Street and East India Dock Road to Newby Place. Set down in Bazely Street, at Stop Z (BP782 - Poplar / All Saints Church, Last Stop on LOR: BP5409 - Poplar High Street / Blackwall [dlr]) and pick up in Newby Place, at Stop G (34215 - Poplar / All Saints Church, First Stop on LOR: 34215 - Poplar / All Saints Church).

### From Stratford International Bus Station.

Buses proceed from Poplar High Street via Bazely Street to stand, departing via Bazely Street to East India Dock Road. Set down in Poplar High Street, at Stop T (34214 - Poplar High Street / Blackwall [dlr], Last Stop on LOR: 34214 - Poplar High Street / Blackwall [dlr]) and pick up in East India Dock Road, at Stop A (868 - Bazely Street, First Stop on LOR: 868 - Bazely Street).

AVAILABILITY:	At any time.
OPERATING RESTRICTIONS:	Unscheduled curtailments only.
MEAL RELIEFS:	No meal relief vehicles to stand at any time.
FERRY VEHICLES:	No ferry vehicles to park on stand at any time.
BLIND DISPLAY:	Poplar, All Saints.

## **CANARY WHARF, TRAFALGAR WAY (from CROSSHARBOUR, ASDA)**

Public stand for up to two buses on southbound carriageway of Trafalgar Way, 149 metres south of Broadwalk Place and 204 metres north of Cartier Circle.

Buses proceed from Trafalgar Way direct to stand, departing via Trafalgar Way, Cartier Circle, Churchill Place and The South Colonnade to Canada Square. Set down in Trafalgar Way (LE235 - Billingsgate Market, Last Stop on LOR: LE235 - Billingsgate Market) and pick up in Canada Square, at Stop J (R0314 - Canada Square South).

AVAILABILITY:	At any time.
OPERATING RESTRICTIONS:	Unscheduled curtailments only
MEAL RELIEFS:	No meal relief vehicles to stand at any time.
FERRY VEHICLES:	No ferry vehicles to park on stand at any time.
BLIND DISPLAY:	Canary Wharf.

## **CROSSHARBOUR, ASDA**

Private stand for 5 buses in marked bays in Asda car park.

Additional overflow stand for 2 buses on west side of East Ferry Road, between entrance and exit of Asda store.

Buses proceed from Asda Access Road direct to stand, departing to Asda Access Road. Set down in Asda Access Road (OC673 - Isle Of Dogs Asda, Last Stop on LOR: OC673 - Isle Of Dogs Asda) and pick up in Asda Access Road, at Stop CE (R0752 - Crossharbour Asda, First Stop on LOR: R0752 - Crossharbour Asda).

AVAILABILITY:	At any time.
OPERATING RESTRICTIONS:	No more than 2 buses on Route D8 should be scheduled to stand at any one time.
MEAL RELIEFS:	No meal relief vehicles to stand at any time.
FERRY VEHICLES:	No ferry vehicles to park on stand at any time.
BLIND DISPLAY:	Crossharbour.
OTHER INFORMATION:	Toilet facilities available in Asda on Mondays to Saturdays between 0730 and 2200 and on Sundays between 1000 and 1600.

## Transport for London - QSI Points and Mileage List

Route D8  
 Service change 27442  
 Date 14/06/2013

Reason for Issu

QSI Points are highlighted in blue.

OUT DIRECTION				
Timing Point Code	Stop Number	Stop Name	Metres	Miles
<b>STFIBS</b>		<b>Stratford International Bus Station</b>		
STFCBS	<b>Stop X</b>	Stratford City Bus Station	<b>595</b>	<b>0.37</b>
	2067	Abbey Lane	<b>1465</b>	<b>0.91</b>
	4875	Bow Flyover	430	0.27
	29981	Bow Church	411	0.26
BWCHSN	25096	Bow Church Station	236	0.15
	LE243	Rounton Road	378	0.23
DEVRSN	LE132	Devons Road Station	307	0.19
	LE245	Cranwell Close	195	0.12
	LE247	Fawe Street	502	0.31
	LE129	Langdon Park Station	266	0.17
	LE246	Chrip Street Market	334	0.21
POPRAS	34215	Poplar / All Saints Church	167	0.10
	34214	Poplar High Street / Blackwall	323	0.20
	LE236	Billingsgate Market	604	0.38
	R0314	Canada Square South	733	0.46
CNWFSN	BP2355	Canary Wharf Station	118	0.07
	BP2356	Westferry Circus	364	0.23
	FC30	Heron Quays	391	0.24
	36869	The International Hotel	338	0.21
STHQSN	FC98	Admirals Way	194	0.12
	LE168	South Quay Station (Dir)	371	0.23
	37145	Harbour Exchange Square	104	0.06
	37147	East Ferry Road	173	0.11
	FC08	Crossharbour Station	251	0.16
CHBRAS	OC673	Isle Of Dogs Asda	147	0.09
<b>Total Route Mileage - Out Direction</b>			<b>9397</b>	<b>5.84</b>
			<i>Metres</i>	<i>Miles</i>

The mileages in the black box are for the new section of routeing:  
 Mileages in red font are planning estimates & not ibus calculations.

### FINAL MILEAGE TO BE CONFIRMED

The final mileage will be provided after stopping arrangements have been finalised for the new section of routeing.

## Interim scheme: Extension to Stratford International VIA Warton Road

### ue Mileage Update

BACK DIRECTION				
Timing Point Code	Stop Number	Stop Name	Metres	Miles
CHBRAS	R0752	Crossharbour Asda	0	0.00
	37148	Crossharbour Station	246	0.15
	37146	Harbour Exchange Square	287	0.18
	LE169	South Quay Station (Dir)	193	0.12
STHQSN	FC99	Admirals Way	396	0.25
	36870	The International Hotel	216	0.13
	FC76	Heron Quays	197	0.12
	LE193	Westferry Circus	375	0.23
	LE186	Cabot Square	285	0.18
CNWFSN	R0315	Canary Wharf Station	295	0.18
	BP3588	Canada Square North	214	0.13
	BP4819	Churchill Place	239	0.15
	LE235	Billingsgate Market	387	0.24
	BP5409	Poplar High Street / Blackwall	516	0.32
POPRAS	868	Bazely Street	371	0.23
	LE250	Chrip Street Market	182	0.11
	LE130	Langdon Park Station	289	0.18
	LE248	Fawe Street	294	0.18
	LE249	Cranwell Close	477	0.30
DEVRSN	LE131	Devons Road Station	258	0.16
	LE244	Rounton Road	252	0.16
	LE133	Bow Road	268	0.17
BWCHSN	902	Bow Church Station	123	0.08
	R0717	Bow Church	272	0.17
	348	Bow Flyover	130	0.08
	2066	Marshgate Lane	376	0.23
	2068	Warton Road	493	0.31
STFCBS	<b>BP5606</b>	Stratford City Bus Station	<b>1223</b>	<b>0.76</b>
<b>STFIBS</b>		<b>Stratford International Bus Station</b>	<b>600</b>	<b>0.37</b>
Total Route Mileage - Back Direction			<b>9454</b>	<b>5.87</b>
			<i>Metres</i>	<i>Miles</i>

The mileages in the black box are for the new section of routing:  
Mileages in red font are planning estimates & not ibus calculations.

#### FINAL MILEAGE TO BE CONFIRMED

The final mileage will be provided after stopping arrangements have been finalised for the new section of routing.

## Transport for London - QSI Points and Mileage List

Route D8  
 Service change 27442  
 Date 14/06/2013

Reason for Iss
----------------

QSI Points are highlighted in blue.

OUT DIRECTION				
Timing Point Code	Stop Number	Stop Name	Metres	Miles
<b>STFIBS</b>		<b>Stratford International Bus Station</b>		
STFCBS	<b>Stop X</b>	Stratford City Bus Station	<b>595</b>	<b>0.37</b>
	2067	Abbey Lane	<b>1754</b>	<b>1.09</b>
	4875	Bow Flyover	430	0.27
	29981	Bow Church	411	0.26
BWCHSN	25096	Bow Church Station	236	0.15
	LE243	Rounton Road	378	0.23
DEVRSN	LE132	Devons Road Station	307	0.19
	LE245	Cranwell Close	195	0.12
	LE247	Fawe Street	502	0.31
	LE129	Langdon Park Station	266	0.17
	LE246	Chrip Street Market	334	0.21
POPRAS	34215	Poplar / All Saints Church	167	0.10
	34214	Poplar High Street / Blackwall	323	0.20
	LE236	Billingsgate Market	604	0.38
	R0314	Canada Square South	733	0.46
CNWFSN	BP2355	Canary Wharf Station	118	0.07
	BP2356	Westferry Circus	364	0.23
	FC30	Heron Quays	391	0.24
	36869	The International Hotel	338	0.21
STHQSN	FC98	Admirals Way	194	0.12
	LE168	South Quay Station (Dir)	371	0.23
	37145	Harbour Exchange Square	104	0.06
	37147	East Ferry Road	173	0.11
	FC08	Crossharbour Station	251	0.16
CHBRAS	OC673	Isle Of Dogs Asda	147	0.09
<b>Total Route Mileage - Out Direction</b>			<b>9686</b>	<b>6.02</b>
			<i>Metres</i>	<i>Miles</i>

The mileages in the black box are for the new section of routing:  
 Mileages in red font are planning estimates & not ibus calculations.

### FINAL MILEAGE TO BE CONFIRMED

The final mileage will be provided after stopping arrangements have been finalised for the new section of routing.

## Extension to Stratford International VIA Carpenters Road

### ue Mileage Update

BACK DIRECTION				
Timing Point Code	Stop Number	Stop Name	Metres	Miles
CHBRAS	R0752	Crossharbour Asda	0	0.00
	37148	Crossharbour Station	246	0.15
	37146	Harbour Exchange Square	287	0.18
	LE169	South Quay Station (Dlr)	193	0.12
STHQSN	FC99	Admirals Way	396	0.25
	36870	The International Hotel	216	0.13
	FC76	Heron Quays	197	0.12
	LE193	Westferry Circus	375	0.23
	LE186	Cabot Square	285	0.18
CNWFSN	R0315	Canary Wharf Station	295	0.18
	BP3588	Canada Square North	214	0.13
	BP4819	Churchill Place	239	0.15
	LE235	Billingsgate Market	387	0.24
	BP5409	Poplar High Street / Blackwall	516	0.32
POPRAS	868	Bazely Street	371	0.23
	LE250	Chrip Street Market	182	0.11
	LE130	Langdon Park Station	289	0.18
	LE248	Fawe Street	294	0.18
	LE249	Cranwell Close	477	0.30
DEVRSN	LE131	Devons Road Station	258	0.16
	LE244	Rounton Road	252	0.16
	LE133	Bow Road	268	0.17
BWCHSN	902	Bow Church Station	123	0.08
	R0717	Bow Church	272	0.17
	348	Bow Flyover	130	0.08
	2066	Marshgate Lane	376	0.23
	2068	Warton Road	493	0.31
STFCBS	<b>BP5606</b>	Stratford City Bus Station	<b>1561</b>	<b>0.97</b>
<b>STFIBS</b>		<b>Stratford International Bus Station</b>	<b>595</b>	<b>0.37</b>
Total Route Mileage - Back Direction			<b>9787</b>	<b>6.08</b>
			<i>Metres</i>	<i>Miles</i>

The mileages in the black box are for the new section of routeing:  
 Mileages in red font are planning estimates & not ibus calculations.

#### FINAL MILEAGE TO BE CONFIRMED

The final mileage will be provided after stopping arrangements have been finalised for the new section of routeing.

## MINI SERVICE SPECIFICATION

<b>Route Number</b>	D8
<b>Terminus Points</b>	<b>From 31<sup>st</sup> August 2013:</b> Stratford International Bus Station and Crossharbour, Asda ( <b>via Warton Road</b> ) <b>From 3<sup>rd</sup> May 2014:</b> Stratford International Bus Station and Crossharbour, Asda ( <b>via Carpenters Road</b> )
<b>Minimum Performance Standard (both routeings)</b>	Average Excess Wait Time - No more than 0.90 minutes
<b>Extension Threshold (both routeings)</b>	Average Excess Wait Time Threshold - 0.80 minutes
<b>Minimum Operated Mileage Standard (both routeings)</b>	No less than 98.00%

## MINI SERVICE SPECIFICATION

- 1) MINI SERVICE SPEC - ROUTE SPECIFICATION INFORMATION
- 2) NOTES
- 3) OPERATIONAL CONSIDERATIONS
- 4) ROUTE RECORD AND IBUS MILEAGE & QSI POINTS (**for both routeings commencing from 31<sup>st</sup> August 2013 & 3<sup>rd</sup> May 2014**)



## 2) NOTES

### Proposed Changes:

The following alterations are proposed for introduction:

- **From 31<sup>st</sup> August 2013**, Route No. D8 is re-structured to operate between Stratford International Bus Station and Crossharbour, Asda. Route No. D8 will operate from Stratford International Bus Station via International Way, Montfichet Road and Warton Road to Stratford High Street to re-join line of routeing.
- **Buses will not enter Stratford City Bus Station and will serve stop X towards Crossharbour, Asda and stop U towards Stratford International Bus Station.**
- **From provisionally 3<sup>rd</sup> May 2014**, Route No. D8 is also re-routed from Montfichet Road via Private road in Olympic park outside Aquatics Centre and Carpenters Road to Stratford High Street to rejoin current line of routeing. This is to better serve the Aquatics Centre, Orbit and main stadium. **This re-routeing has been delayed pending the delivery of Montfichet link road which is due in Spring 2014 and will be subject to a route test.**
- **Please note, the routeing commencing from 3<sup>rd</sup> May 2014 was specified in the minispec issued in November 2012 but via Stratford City Bus Station. Buses will not enter Stratford City Bus Station as stated above. Therefore, a revised route record and ibus mileage & QSI points sheet is included in Section 4.**
- **Please see Section 4 for a full list of streets traversed and standing arrangements for both routeings from 31<sup>st</sup> August 2013 and 3<sup>rd</sup> May 2014.**
- For the routeing commencing from **31<sup>st</sup> August 2013**, it is expected that the **maximum** running time increase will be approximately 4 minutes per return journey. This should reduce during off peak times.

## 3) OPERATIONAL CONSIDERATIONS

- 3.1) The Queen Elizabeth Olympic Park is still being transformed into its legacy state. Roadworks associated with this might be expected.
  - 3.2) The Queen Elizabeth Olympic Park will be home to a number of major events e.g. Ride London. It may be necessary to close roads to accommodate these events.
- ### 4) ROUTE RECORD AND IBUS MILEAGE & QSI POINTS (for both routeings commencing from 31<sup>st</sup> August 2013 and 3<sup>rd</sup> May 2014)
- 4.1) ROUTE RECORD  
As per Busnet Printout.
  - 4.2) IBUS MILEAGE & QSI POINTS  
As per current print out.

## LONDON BUSES - ROUTE DESCRIPTION

### **ROUTE D8: Stratford International Bus Station - Crossharbour, Asda**

**Date of Structural Change:** 31 August 2013.

**Date of Service Change:** 31 August 2013.

**Reason for Issue:** Route extended to Stratford International Bus Station.

#### **STREETS TRAVERSED**

**Towards Crossharbour, Asda:** Stratford International Bus Station, International Way, Montfichet Road, Warton Road, Stratford High Street, Bow Interchange, Bow Road, Campbell Road, Devons Road, Violet Road, Morris Road, Chrisp Street, East India Dock Road, Newby Place, Poplar High Street, Preston's Road, Trafalgar Way, Cartier Circle, Churchill Place, The South Colonnade, Canada Square, The South Colonnade, Cabot Square, West India Avenue, Westferry Circus (Upper Level), Westferry Road, Marsh Wall, Limeharbour, East Ferry Road, Asda Access Road.

**Towards Stratford International Bus Station:** Asda Access Road, East Ferry Road, Limeharbour, Marsh Wall, Westferry Road, Westferry Circus (Upper Level), West India Avenue, Cabot Square, The North Colonnade, Canada Square, The North Colonnade, Churchill Place, Cartier Circle, Trafalgar Way, Preston's Road, Poplar High Street, Bazely Street, East India Dock Road, Chrisp Street, Morris Road, Violet Road, Devons Road, Campbell Road, Bow Road, Bow Interchange, Stratford High Street, Warton Road, Montfichet Road, International Way, Stratford International Bus Station.

## **AUTHORISED STANDS, CURTAILMENT POINTS, & BLIND DESCRIPTIONS**

Please note that only stands, curtailment points, & blind descriptions as detailed in this contractual document may be used.

### **STRATFORD INTERNATIONAL BUS STATION**

Private stand in Stratford International Bus Station. Definition to be supplied.  
Buses proceed from Stratford International Bus Station direct to stand, departing to Stratford International Bus Station. Set down on stand, on stand, Last Stop on LOR: BP5605 - Stratford City Bus Station) and pick up on stand, on stand, First Stop on LOR: 2067 - Abbey Lane).

AVAILABILITY: At any time.  
OPERATING RESTRICTIONS: No more than 2 buses on Route D8 should be scheduled to stand at any one time.  
MEAL RELIEFS: No meal relief vehicles to stand at any time.  
FERRY VEHICLES: No ferry vehicles to park on stand at any time.  
BLIND DISPLAY: Stratford International.  
OTHER INFORMATION: Toilet facilities to be confirmed.

### **BOW CHURCH (from CROSSHARBOUR, ASDA)**

Public stand for two buses on south side of Bow Road opposite Bow Church, at Stop L. Buses proceed from Bow Road via Bow Interchange and Bow Road to stand, departing to Bow Road. Set down in Bow Road, at Stop M (348 - Bow Flyover, Last Stop on LOR: 348 - Bow Flyover) and pick up in Bow Road, at Stop K (29981 - Bow Church, First Stop on LOR: 29981 - Bow Church).

AVAILABILITY: At any time.  
OPERATING RESTRICTIONS: Unscheduled curtailments only  
MEAL RELIEFS: No meal relief vehicles to stand at any time.  
FERRY VEHICLES: No ferry vehicles to park on stand at any time.  
BLIND DISPLAY: Bow Church.

## **POPLAR, ALL SAINTS STATION**

Public stand for 2 buses on west side of Bazely Street commencing approximately 40 metres south of East India Dock Road and extending 20 metres south.

### From Crossharbour, Asda.

Buses proceed from Bazely Street direct to stand, departing via Bazely Street and East India Dock Road to Newby Place. Set down in Bazely Street, at Stop Z (BP782 - Poplar / All Saints Church, Last Stop on LOR: BP5409 - Poplar High Street / Blackwall [dlr]) and pick up in Newby Place, at Stop G (34215 - Poplar / All Saints Church, First Stop on LOR: 34215 - Poplar / All Saints Church).

### From Stratford International Bus Station.

Buses proceed from Poplar High Street via Bazely Street to stand, departing via Bazely Street to East India Dock Road. Set down in Poplar High Street, at Stop T (34214 - Poplar High Street / Blackwall [dlr], Last Stop on LOR: 34214 - Poplar High Street / Blackwall [dlr]) and pick up in East India Dock Road, at Stop A (868 - Bazely Street, First Stop on LOR: 868 - Bazely Street).

AVAILABILITY:	At any time.
OPERATING RESTRICTIONS:	Unscheduled curtailments only.
MEAL RELIEFS:	No meal relief vehicles to stand at any time.
FERRY VEHICLES:	No ferry vehicles to park on stand at any time.
BLIND DISPLAY:	Poplar, All Saints.

## **CANARY WHARF, TRAFALGAR WAY (from CROSSHARBOUR, ASDA)**

Public stand for up to two buses on southbound carriageway of Trafalgar Way, 149 metres south of Broadwalk Place and 204 metres north of Cartier Circle.

Buses proceed from Trafalgar Way direct to stand, departing via Trafalgar Way, Cartier Circle, Churchill Place and The South Colonnade to Canada Square. Set down in Trafalgar Way (LE235 - Billingsgate Market, Last Stop on LOR: LE235 - Billingsgate Market) and pick up in Canada Square, at Stop J (R0314 - Canada Square South).

AVAILABILITY:	At any time.
OPERATING RESTRICTIONS:	Unscheduled curtailments only
MEAL RELIEFS:	No meal relief vehicles to stand at any time.
FERRY VEHICLES:	No ferry vehicles to park on stand at any time.
BLIND DISPLAY:	Canary Wharf.

## **CROSSHARBOUR, ASDA**

Private stand for 5 buses in marked bays in Asda car park.

Additional overflow stand for 2 buses on west side of East Ferry Road, between entrance and exit of Asda store.

Buses proceed from Asda Access Road direct to stand, departing to Asda Access Road. Set down in Asda Access Road (OC673 - Isle Of Dogs Asda, Last Stop on LOR: OC673 - Isle Of Dogs Asda) and pick up in Asda Access Road, at Stop CE (R0752 - Crossharbour Asda, First Stop on LOR: R0752 - Crossharbour Asda).

AVAILABILITY:	At any time.
OPERATING RESTRICTIONS:	No more than 2 buses on Route D8 should be scheduled to stand at any one time.
MEAL RELIEFS:	No meal relief vehicles to stand at any time.
FERRY VEHICLES:	No ferry vehicles to park on stand at any time.
BLIND DISPLAY:	Crossharbour.
OTHER INFORMATION:	Toilet facilities available in Asda on Mondays to Saturdays between 0730 and 2200 and on Sundays between 1000 and 1600.

## LONDON BUSES - ROUTE DESCRIPTION

### ROUTE D8: Stratford International Bus Station - Crossharbour, Asda

**Date of Structural Change:** 3 May 2014.

**Date of Service Change:** 3 May 2014.

**Reason for Issue:** Route restructured to serve Olympic Park.

#### **STREETS TRAVERSED**

**Towards Crossharbour, Asda:** Stratford International Bus Station, International Way, Montfichet Road, Aquatics Centre, Carpenters Road, Stratford High Street, Bow Interchange, Bow Road, Campbell Road, Devons Road, Violet Road, Morris Road, Chrisp Street, East India Dock Road, Newby Place, Poplar High Street, Preston's Road, Trafalgar Way, Cartier Circle, Churchill Place, The South Colonnade, Canada Square, The South Colonnade, Cabot Square, West India Avenue, Westferry Circus (Upper Level), Westferry Road, Marsh Wall, Limeharbour, East Ferry Road, Asda Access Road.

**Towards Stratford International Bus Station:** Asda Access Road, East Ferry Road, Limeharbour, Marsh Wall, Westferry Road, Westferry Circus (Upper Level), West India Avenue, Cabot Square, The North Colonnade, Canada Square, The North Colonnade, Churchill Place, Cartier Circle, Trafalgar Way, Preston's Road, Poplar High Street, Bazely Street, East India Dock Road, Chrisp Street, Morris Road, Violet Road, Devons Road, Campbell Road, Bow Road, Bow Interchange, Stratford High Street, Carpenters Road, Aquatics Centre, Montfichet Road, International Way, Stratford International Bus Station.

## **AUTHORISED STANDS, CURTAILMENT POINTS, & BLIND DESCRIPTIONS**

Please note that only stands, curtailment points, & blind descriptions as detailed in this contractual document may be used.

### **STRATFORD INTERNATIONAL BUS STATION**

Private stand in Stratford International Bus Station. Definition to be supplied.  
Buses proceed from Stratford International Bus Station direct to stand, departing to Stratford International Bus Station. Set down on stand, on stand, Last Stop on LOR: BP5605 - Stratford City Bus Station) and pick up on stand, on stand, First Stop on LOR: 2067 - Abbey Lane).

AVAILABILITY: At any time.  
OPERATING RESTRICTIONS: No more than 2 buses on Route D8 should be scheduled to stand at any one time.  
MEAL RELIEFS: No meal relief vehicles to stand at any time.  
FERRY VEHICLES: No ferry vehicles to park on stand at any time.  
BLIND DISPLAY: Stratford International.  
OTHER INFORMATION: Toilet facilities to be confirmed.

### **BOW CHURCH (from CROSSHARBOUR, ASDA)**

Public stand for two buses on south side of Bow Road opposite Bow Church, at Stop L. Buses proceed from Bow Road via Bow Interchange and Bow Road to stand, departing to Bow Road. Set down in Bow Road, at Stop M (348 - Bow Flyover, Last Stop on LOR: 348 - Bow Flyover) and pick up in Bow Road, at Stop K (29981 - Bow Church, First Stop on LOR: 29981 - Bow Church).

AVAILABILITY: At any time.  
OPERATING RESTRICTIONS: Unscheduled curtailments only  
MEAL RELIEFS: No meal relief vehicles to stand at any time.  
FERRY VEHICLES: No ferry vehicles to park on stand at any time.  
BLIND DISPLAY: Bow Church.

## **POPLAR, ALL SAINTS STATION**

Public stand for 2 buses on west side of Bazely Street commencing approximately 40 metres south of East India Dock Road and extending 20 metres south.

### From Crossharbour, Asda.

Buses proceed from Bazely Street direct to stand, departing via Bazely Street and East India Dock Road to Newby Place. Set down in Bazely Street, at Stop Z (BP782 - Poplar / All Saints Church, Last Stop on LOR: BP5409 - Poplar High Street / Blackwall [dlr]) and pick up in Newby Place, at Stop G (34215 - Poplar / All Saints Church, First Stop on LOR: 34215 - Poplar / All Saints Church).

### From Stratford International Bus Station.

Buses proceed from Poplar High Street via Bazely Street to stand, departing via Bazely Street to East India Dock Road. Set down in Poplar High Street, at Stop T (34214 - Poplar High Street / Blackwall [dlr], Last Stop on LOR: 34214 - Poplar High Street / Blackwall [dlr]) and pick up in East India Dock Road, at Stop A (868 - Bazely Street, First Stop on LOR: 868 - Bazely Street).

AVAILABILITY:	At any time.
OPERATING RESTRICTIONS:	Unscheduled curtailments only.
MEAL RELIEFS:	No meal relief vehicles to stand at any time.
FERRY VEHICLES:	No ferry vehicles to park on stand at any time.
BLIND DISPLAY:	Poplar, All Saints.

## **CANARY WHARF, TRAFALGAR WAY (from CROSSHARBOUR, ASDA)**

Public stand for up to two buses on southbound carriageway of Trafalgar Way, 149 metres south of Broadwalk Place and 204 metres north of Cartier Circle.

Buses proceed from Trafalgar Way direct to stand, departing via Trafalgar Way, Cartier Circle, Churchill Place and The South Colonnade to Canada Square. Set down in Trafalgar Way (LE235 - Billingsgate Market, Last Stop on LOR: LE235 - Billingsgate Market) and pick up in Canada Square, at Stop J (R0314 - Canada Square South).

AVAILABILITY:	At any time.
OPERATING RESTRICTIONS:	Unscheduled curtailments only
MEAL RELIEFS:	No meal relief vehicles to stand at any time.
FERRY VEHICLES:	No ferry vehicles to park on stand at any time.
BLIND DISPLAY:	Canary Wharf.



## **CROSSHARBOUR, ASDA**

Private stand for 5 buses in marked bays in Asda car park.

Additional overflow stand for 2 buses on west side of East Ferry Road, between entrance and exit of Asda store.

Buses proceed from Asda Access Road direct to stand, departing to Asda Access Road. Set down in Asda Access Road (OC673 - Isle Of Dogs Asda, Last Stop on LOR: OC673 - Isle Of Dogs Asda) and pick up in Asda Access Road, at Stop CE (R0752 - Crossharbour Asda, First Stop on LOR: R0752 - Crossharbour Asda).

AVAILABILITY:	At any time.
OPERATING RESTRICTIONS:	No more than 2 buses on Route D8 should be scheduled to stand at any one time.
MEAL RELIEFS:	No meal relief vehicles to stand at any time.
FERRY VEHICLES:	No ferry vehicles to park on stand at any time.
BLIND DISPLAY:	Crossharbour.
OTHER INFORMATION:	Toilet facilities available in Asda on Mondays to Saturdays between 0730 and 2200 and on Sundays between 1000 and 1600.

## Transport for London - QSI Points and Mileage List

Route D8  
 Service change 27442  
 Date 14/06/2013

Reason for Issu

QSI Points are highlighted in blue.

OUT DIRECTION				
Timing Point Code	Stop Number	Stop Name	Metres	Miles
<b>STFIBS</b>		<b>Stratford International Bus Station</b>		
STFCBS	<b>Stop X</b>	Stratford City Bus Station	<b>595</b>	<b>0.37</b>
	2067	Abbey Lane	<b>1465</b>	<b>0.91</b>
	4875	Bow Flyover	430	0.27
	29981	Bow Church	411	0.26
BWCHSN	25096	Bow Church Station	236	0.15
	LE243	Rounton Road	378	0.23
DEVRSN	LE132	Devons Road Station	307	0.19
	LE245	Cranwell Close	195	0.12
	LE247	Fawe Street	502	0.31
	LE129	Langdon Park Station	266	0.17
	LE246	Chrip Street Market	334	0.21
POPRAS	34215	Poplar / All Saints Church	167	0.10
	34214	Poplar High Street / Blackwall	323	0.20
	LE236	Billingsgate Market	604	0.38
	R0314	Canada Square South	733	0.46
CNWFSN	BP2355	Canary Wharf Station	118	0.07
	BP2356	Westferry Circus	364	0.23
	FC30	Heron Quays	391	0.24
	36869	The International Hotel	338	0.21
STHQSN	FC98	Admirals Way	194	0.12
	LE168	South Quay Station (Dir)	371	0.23
	37145	Harbour Exchange Square	104	0.06
	37147	East Ferry Road	173	0.11
	FC08	Crossharbour Station	251	0.16
CHBRAS	OC673	Isle Of Dogs Asda	147	0.09
<b>Total Route Mileage - Out Direction</b>			<b>9397</b>	<b>5.84</b>
			<i>Metres</i>	<i>Miles</i>

The mileages in the black box are for the new section of routeing:  
 Mileages in red font are planning estimates & not ibus calculations.

### FINAL MILEAGE TO BE CONFIRMED

The final mileage will be provided after stopping arrangements have been finalised for the new section of routeing.

**Interim scheme: Extension to Stratford International VIA Warton Road****Mileage Update**

BACK DIRECTION				
Timing Point Code	Stop Number	Stop Name	Metres	Miles
CHBRAS	R0752	Crossharbour Asda	0	0.00
	37148	Crossharbour Station	246	0.15
	37146	Harbour Exchange Square	287	0.18
	LE169	South Quay Station (Dir)	193	0.12
STHQSN	FC99	Admirals Way	396	0.25
	36870	The International Hotel	216	0.13
	FC76	Heron Quays	197	0.12
	LE193	Westferry Circus	375	0.23
	LE186	Cabot Square	285	0.18
CNWFSN	R0315	Canary Wharf Station	295	0.18
	BP3588	Canada Square North	214	0.13
	BP4819	Churchill Place	239	0.15
	LE235	Billingsgate Market	387	0.24
	BP5409	Poplar High Street / Blackwall	516	0.32
POPRAS	868	Bazely Street	371	0.23
	LE250	Chrip Street Market	182	0.11
	LE130	Langdon Park Station	289	0.18
	LE248	Fawe Street	294	0.18
	LE249	Cranwell Close	477	0.30
DEVRSN	LE131	Devons Road Station	258	0.16
	LE244	Rounton Road	252	0.16
	LE133	Bow Road	268	0.17
BWCHSN	902	Bow Church Station	123	0.08
	R0717	Bow Church	272	0.17
	348	Bow Flyover	130	0.08
	2066	Marshgate Lane	376	0.23
	2068	Warton Road	493	0.31
STFCBS	<b>BP5606</b>	Stratford City Bus Station	<b>1223</b>	<b>0.76</b>
<b>STFIBS</b>		<b>Stratford International Bus Station</b>	<b>600</b>	<b>0.37</b>
<b>Total Route Mileage - Back Direction</b>			<b>9454</b>	<b>5.87</b>
			<i>Metres</i>	<i>Miles</i>

The mileages in the black box are for the new section of routing:  
Mileages in red font are planning estimates & not ibus calculations.

**FINAL MILEAGE TO BE CONFIRMED**

The final mileage will be provided after stopping arrangements have been finalised for the new section of routing.

## Transport for London - QSI Points and Mileage List

Route D8  
 Service change 27442  
 Date 14/06/2013

Reason for Iss
----------------

QSI Points are highlighted in blue.

OUT DIRECTION				
Timing Point Code	Stop Number	Stop Name	Metres	Miles
<b>STFIBS</b>		<b>Stratford International Bus Station</b>		
STFCBS	<b>Stop X</b>	Stratford City Bus Station	<b>595</b>	<b>0.37</b>
	2067	Abbey Lane	<b>1754</b>	<b>1.09</b>
	4875	Bow Flyover	430	0.27
	29981	Bow Church	411	0.26
BWCHSN	25096	Bow Church Station	236	0.15
	LE243	Rounton Road	378	0.23
DEVRSN	LE132	Devons Road Station	307	0.19
	LE245	Cranwell Close	195	0.12
	LE247	Fawe Street	502	0.31
	LE129	Langdon Park Station	266	0.17
	LE246	Chrip Street Market	334	0.21
POPRAS	34215	Poplar / All Saints Church	167	0.10
	34214	Poplar High Street / Blackwall	323	0.20
	LE236	Billingsgate Market	604	0.38
	R0314	Canada Square South	733	0.46
CNWFSN	BP2355	Canary Wharf Station	118	0.07
	BP2356	Westferry Circus	364	0.23
	FC30	Heron Quays	391	0.24
	36869	The International Hotel	338	0.21
STHQSN	FC98	Admirals Way	194	0.12
	LE168	South Quay Station (Dir)	371	0.23
	37145	Harbour Exchange Square	104	0.06
	37147	East Ferry Road	173	0.11
	FC08	Crossharbour Station	251	0.16
CHBRAS	OC673	Isle Of Dogs Asda	147	0.09
<b>Total Route Mileage - Out Direction</b>			<b>9686</b>	<b>6.02</b>
			<i>Metres</i>	<i>Miles</i>

The mileages in the black box are for the new section of routing:  
 Mileages in red font are planning estimates & not ibus calculations.

### FINAL MILEAGE TO BE CONFIRMED

The final mileage will be provided after stopping arrangements have been finalised for the new section of routing.

## Extension to Stratford International VIA Carpenters Road

### ue Mileage Update

BACK DIRECTION				
Timing Point Code	Stop Number	Stop Name	Metres	Miles
CHBRAS	R0752	Crossharbour Asda	0	0.00
	37148	Crossharbour Station	246	0.15
	37146	Harbour Exchange Square	287	0.18
	LE169	South Quay Station (Dlr)	193	0.12
STHQSN	FC99	Admirals Way	396	0.25
	36870	The International Hotel	216	0.13
	FC76	Heron Quays	197	0.12
	LE193	Westferry Circus	375	0.23
	LE186	Cabot Square	285	0.18
CNWFSN	R0315	Canary Wharf Station	295	0.18
	BP3588	Canada Square North	214	0.13
	BP4819	Churchill Place	239	0.15
	LE235	Billingsgate Market	387	0.24
	BP5409	Poplar High Street / Blackwall	516	0.32
POPRAS	868	Bazely Street	371	0.23
	LE250	Chrip Street Market	182	0.11
	LE130	Langdon Park Station	289	0.18
	LE248	Fawe Street	294	0.18
	LE249	Cranwell Close	477	0.30
DEVRSN	LE131	Devons Road Station	258	0.16
	LE244	Rounton Road	252	0.16
	LE133	Bow Road	268	0.17
BWCHSN	902	Bow Church Station	123	0.08
	R0717	Bow Church	272	0.17
	348	Bow Flyover	130	0.08
	2066	Marshgate Lane	376	0.23
	2068	Warton Road	493	0.31
STFCBS	<b>BP5606</b>	Stratford City Bus Station	<b>1561</b>	<b>0.97</b>
<b>STFIBS</b>		<b>Stratford International Bus Station</b>	<b>595</b>	<b>0.37</b>
Total Route Mileage - Back Direction			<b>9787</b>	<b>6.08</b>
			<i>Metres</i>	<i>Miles</i>

The mileages in the black box are for the new section of routeing:  
 Mileages in red font are planning estimates & not ibus calculations.

#### FINAL MILEAGE TO BE CONFIRMED

The final mileage will be provided after stopping arrangements have been finalised for the new section of routeing.

## SECTION 2: PART A

### SERVICE SPECIFICATION FOR ROUTE No. D8

#### CONTENTS

	Page
1. Tenders Required	2
2. Proposed Changes	2
3. Terminals	2
4. Days of Operation	3
5. Vehicle Type	3
6. Frequencies	4
7. Minimum Performance Standards	9
8. Running Times	10
9. Layovers	10
10. Timing Constraints	10
11. Control Strategy	11
12. Operational Considerations	11
13. Stopping Arrangements	12
14. Timing Points and Mileages	13
15. Vehicle Livery	13
16. Stands and Blinds	14
 <u>Appendices</u>	
A. Route Record	15

---

**This document should be read in conjunction with the Corporation's Guide for Tenderers (Part A: Explanatory Notes - Service Requirements). Where appropriate, reference is made to the relevant section.**

## 1. TENDERS REQUIRED

This document describes the service for which the Corporation requires Tenders and Tenderers **must** submit a fully compliant bid. In addition, Tenderers **may** wish to draw upon their local knowledge to submit alternative bids which offer improved value for money in meeting passenger needs. These might incorporate, for example, different timings, frequencies, route structures and / or vehicles. The Corporation will welcome such bids and give them careful consideration.

For more information, please refer to Section 2.1 of Part A of the Guide for Tenderers.

## 2. PROPOSED CHANGES

At this time, no changes are proposed to the existing service for introduction prior to the commencement of the new Route Agreement for Route No. D8.

Tenderers should note that the following alterations (subject to consultation) are proposed as part of this Service Specification for introduction with the new Route Agreement:

- Route No. D8 is re-structured to operate between Stratford City Bus Station and Crossharbour, Asda. Towards Crossharbour, Asda, buses will operate from Stratford City Bus Station via roads in Stratford City Development and Warton Road to Stratford High Street to re-join line of routeing. Towards Stratford City Bus Station, buses will operate via current line of routeing to Stratford High Street and then operate via Warton Road and roads in Stratford City Development to Stratford City Bus Station. **Details of this routeing are shown in Appendix A.**
- Standing and stopping arrangements at Stratford City Bus Station are to be finalised. These will be confirmed with the successful Tenderer.
- Please note, Stratford City Bus Station is due to be closed for the duration of the Olympics. Exact timescales are currently unclear.
- Single deck, dual door, 55 capacity vehicles are specified, subject to a satisfactory route test for the current as well as the new section of routeing. This will be carried out once the new roads have been built.
- Any significant effects on tender submissions and proposals will be negotiated with shortlisted Tenderers during the evaluation and with the successful Tenderer post award as appropriate.

## 3. TERMINALS

Route No. D8 will operate between Stratford City Bus Station and Crossharbour, Asda.

Full details of the route to be followed, the permitted terminal workings and the available stands are shown at Appendix A. Tenderers should particularly note the information relating to the shared usage of stands, the taking of meal reliefs and the use of ferry vehicles.

#### 4. DAYS OF OPERATION

One timetable must be offered for Route No. D8 which will operate as follows:

DAY OF OPERATION	
Mondays to Fridays	Section 6.1
Saturdays & Good Friday	Section 6.2
Sundays	Section 6.3
Christmas Day	No service
Boxing Day	Section 6.4
Other Public Holidays	Sunday service

#### 5. VEHICLE TYPE

Please refer to Section 2.5 of Part A of the Guide for Tenderers.

Route No. D8 is currently approved for vehicles which are a maximum of 9.3 metres long and 2.55 metres wide. A formal route test will be required for vehicles which exceed these dimensions and for any manoeuvres and roads previously unserved by bus (i.e. the section of routeing between Stratford High Street (with junction with Warton Road) and Stratford City Bus Station). This will be arranged with the successful Tenderer.

The service requirement set out in Section 6 assumes that dual door, single deck buses with a minimum capacity of 55, of which approximately 28 should be seated, will be used on this route. Luggage space should also be provided.

Tenderers must submit proposals based on new vehicles. These must be of a low floor design and be accessible to wheelchairs by means of a powered ramp.

**Bids for both conventional diesel powered vehicles and diesel-electric hybrid vehicles should be submitted and separate prices for both types are required.**

**Bids based on a mix of hybrid and conventional vehicles would be welcomed, subject to a minimum of 10 hybrid powered vehicles being offered for this route (full hybrid operation should be offered for routes with a vehicle requirement of less than 10).**

Tenderers should refer to the vehicle design (including accessibility) features contained in Schedule II to Annex B of the Framework Agreement and Section 2 Part B of the Master ITT (Version 2 issued June 2005).

Tenderers may also submit bids based on using existing vehicles. Tenderers are asked to specify what refurbishment would be carried out on existing buses and the expected timescale of those works. See Master ITT (Version 2 issued June 2005).



## 6. FREQUENCIES

The level of service (e.g. every 15 minutes) required by the Corporation is described in terms of the interval between departures. Whilst a completely regular service at the specified frequency should be possible at most times, occasionally a bus may be timetabled to depart up to five minutes earlier or later than the regular time.

Tenderers should note that when the specified frequency changes (e.g. between the peak and midday periods), the scheduled interval between buses should never be greater than that provided by the lower of the two frequencies **AT ANY POINT ON THE ROUTE**.

Tenderers should note that unless otherwise stated **all** journeys should operate between the terminal points defined in each direction.

## 6.1 Mondays to Fridays

### 1. Stratford City Bus Station to Crossharbour, Asda

0450 - 0535	Every 20 minutes
0536 - 0635	Every 15 minutes
0636 - 1940	Every 12 minutes
1941 - 2040	Every 15 minutes
2041 - 0045	Every 20 minutes

First departure from Stratford City Bus Station no later than 0455.

Last departure from Stratford City Bus Station no earlier than 0040.

Tenderers should ensure that buses are scheduled to be no more than 12 minutes apart at Poplar, All Saints Station between 0700 and 0900 and between 1500 and 1635.

### 2. Crossharbour, Asda to Stratford City Bus Station

0455 - 0600	Every 20 minutes
0601 - 0630	Every 15 minutes
0631 - 1925	Every 12 minutes
1926 - 2025	Every 15 minutes
2026 - 0010	Every 20 minutes

First departure from Stratford City Bus Station no later than 0500.

Last departure from Stratford City Bus Station no earlier than 0005.

Tenderers should ensure that buses are scheduled to be no more than 12 minutes apart at Devons Road DLR Station between 0700 and 0900 and between 1500 and 1635.

## 6.2 Saturdays & Good Friday

### 1. Stratford City Bus Station to Crossharbour, Asda

0450 - 0635	Every 20 minutes
0636 - 0835	Every 15 minutes
0836 - 1840	Every 12 minutes
1841 - 1940	Every 15 minutes
1941 - 0045	Every 20 minutes

First departure from Stratford City Bus Station no later than 0455.

Last departure from Stratford City Bus Station no earlier than 0040.

Tenderers should ensure that buses are scheduled to be no more than 12 minutes apart at Poplar, All Saints Station between 0850 and 1100.

### 2. Crossharbour, Asda to Stratford City Bus Station

0455 - 0800	Every 20 minutes
0801 - 0830	Every 15 minutes
0831 - 1805	Every 12 minutes
1806 - 1945	Every 15 minutes
1946 - 0010	Every 20 minutes

First departure from Stratford City Bus Station no later than 0500.

Last departure from Stratford City Bus Station no earlier than 0005.

Tenderers should ensure that buses are scheduled to be no more than 12 minutes apart at Devons Road DLR Station between 0845 and 1055.

### 6.3 Sundays

1. Stratford City Bus Station to Crossharbour, Asda

0555 - 0700            Every 30 minutes  
0701 - 0045            Every 20 minutes

First departure from Stratford City Bus Station no later than 0600.  
Last departure from Stratford City Bus Station no earlier than 0040.

Tenderers should ensure that buses are scheduled to be no more than 20 minutes apart at Poplar, All Saints Station between 0955 and 1135.

2. Crossharbour, Asda to Stratford City Bus Station

0555 - 0730            Every 30 minutes  
0731 - 0010            Every 20 minutes

First departure from Stratford City Bus Station no later than 0600.  
Last departure from Stratford City Bus Station no earlier than 0005.

Tenderers should ensure that buses are scheduled to be no more than 20 minutes apart at Devons Road DLR Station between 1025 and 1125.

## 6.4 Boxing Day

1. Stratford City Bus Station to Crossharbour, Asda

0755 - 0045            Every 20 minutes

First departure from Stratford City Bus Station no later than 0800.  
Last departure from Stratford City Bus Station no earlier than 0040.

Tenderers should ensure that buses are scheduled to be no more than 20 minutes apart at Poplar, All Saints Station between 0955 and 1135.

2. Crossharbour, Asda to Stratford City Bus Station

0820 - 0010            Every 20 minutes

First departure from Stratford City Bus Station no later than 0825.  
Last departure from Stratford City Bus Station no earlier than 0005.

Tenderers should ensure that buses are scheduled to be no more than 20 minutes apart at Devons Road DLR Station between 1025 and 1125.

## 7. MINIMUM PERFORMANCE STANDARDS

Please refer to Section 2.7 of Part A of the Guide for Tenderers.

Tenderers should note that the objective of the Operator of Route No. D8 shall be to operate all scheduled mileage and adhere **fully** to the published timetable. The Operator must use its best endeavours to achieve this.

The **minimum** standards of acceptable performance for Route No. D8 shall be:

Average Excess Wait Time:	No more than 0.90 minutes
Minimum Operated Mileage:	No less than 98.00%

or as notified by the Corporation from time to time. The Operator will be required to achieve or better the standards.

### QSI Thresholds

The QSI threshold is the standard of performance to be achieved by the operator in order to qualify for an automatic contract extension (in accordance with Schedule IX of the Framework Agreement).

Average Excess Wait Time Threshold = 0.80 minutes

### Summary of proposed QSI coverage: Route No. D8

Note: While London Buses undertakes to carry out QSI surveys at the times and locations specified below, it may prove impossible to rearrange a survey cancelled or nullified at short notice.

### Survey locations

#### Towards Crossharbour ASDA

Stratford City#  
Canary Wharf

#### Towards Stratford City Bus Station

Crossharbour ASDA  
Poplar

Total scheduled manual QSI surveys per quarter = 64.

# Coverage at Stratford would remain at the existing Bus Station prior to diversion of route to Stratford City.

## 8. RUNNING TIMES

The current timetable for Route No. D8 can be viewed by prospective Tenderers on Caesar. Attention is drawn to the variations in running times at different times of the day. Please refer to Section 2.8 of Part A of the Guide for Tenderers for further information.

Tenderers should devise their own running times for the section of Route No. D8 between Bow Church DLR Station and Stratford City Bus Station.

Tenderers should carefully check the existing running times to ensure that they are appropriate in present traffic conditions. Tenderers should particularly check the existing running times for the Mondays to Fridays afternoon interpeak, PM peak and early evening, Saturday afternoon shopping period and the Sunday shopping period.

When reviewing existing, and devising new, running times Tenderers should refer to:

- the minimum performance standards for Route No. D8 in Section 7 above;
- the historical performance data provided in Section 1 Part B of the introduction to this ITT;
- the paragraph in Section 12 referring to the proposed extension of the Cashless Boarding zone throughout the whole of the London area.

Tenderers may consider if school summer holiday schedules, incorporating running time reductions, are desirable for this route. In this event, schedules and costs must be submitted separately.

## 9. LAYOVERS

Under normal circumstances, layover time on stands and at bus stations should be restricted to that required to provide a reliable service. Longer layovers for any other purpose may only be taken with the permission of the Corporation.

## 10. TIMING CONSTRAINTS

Route No. D8 should interwork with other bus services where possible.

Tenderers submitting bids should bear this requirement in mind when compiling schedules. This requirement will be negotiated with the successful Tenderer for this route to ensure that optimal interworking/separation is delivered within its schedules.

## 11. CONTROL STRATEGY

Route No. D8 can suffer from the effects of traffic congestion, making some form of route control essential in order to achieve or better the minimum performance standards for this route.

Tenderers should submit proposals on the control strategy they intend to adopt and the type of control they would intend to use by completing the form provided in Section 3: Part 7 of this ITT. The cost of this control should be included within the main Tender price.

Tenderers should also indicate how they intend to facilitate driver changeovers and meal reliefs for this route.

Further information is provided in Section 2.11 of Part A of the Guide for Tenderers.

## 12. OPERATIONAL CONSIDERATIONS

Tenderers should note the following operating considerations affecting Route No. D8:

- Route No. D8 can suffer from unpredictable traffic delays in Stratford and Bow, particularly during peak periods.

Tenderers should also note the following factors/events which may have an impact on Route No. D8 in the foreseeable future:

- Wood Wharf is a 20-acre site in the north eastern corner of the Isle of Dogs, immediately to the east of Canary Wharf. The development will include homes, shops, leisure and community facilities. This development is expected to be completed in 2019 and will have a significant impact on travel patterns in the area.
- The Millennium Quarter is the area of the Isle of Dogs around South Quay DLR Station. Developers propose construction of large scale office and some residential accommodation, effectively extending the Canary Wharf business district southwards. These developments will have a significant impact on travel patterns in the area.
- Crossrail will connect the City, Canary Wharf, the West End and Heathrow Airport to commuter areas east and west of the capital. Major construction of the railway will begin in 2010, with services commencing in 2017. The construction impacts of Crossrail could affect Route No. D8 and it is anticipated that some passenger demand for Route No. D8 would shift to this line when it opens. Route No. D8 will be reviewed closer to the opening date.
- The 2012 Olympic Games open on Friday 27<sup>th</sup> July and close on Sunday the 12<sup>th</sup> August. The 2012 Paralympic Games start on Wednesday the 29<sup>th</sup> August and close on Sunday the 9<sup>th</sup> September. The games will result in additional passenger demand across the network, requiring additional capacity on some routes. There will also be a number of road closures in the event areas resulting in route diversions. Operators should be aware there will be implications to them during this time. Full details and any extra resource required will be negotiated with the operator at a later date.



## 12. OPERATIONAL CONSIDERATIONS - continued

- The Stratford City Development (SCD) is located to the north west of Stratford Regional Station and includes a very large retail and leisure component. A new bus station will be built. Construction work has begun and the retail area and bus station is expected to open during 2011. SCD is expected to generate additional passenger demand on Route No. D8. General vehicular access from the south will be via Warton Road from its junction with Stratford High Street. Alternative access will be from Alma Street (off Leyton Road).
- To the north of the retail area is Stratford International Station. Southeastern trains have been stopping there since 13<sup>th</sup> December 2009. The DLR extension to Stratford International is expected to open in autumn 2010 and will be constructed by converting the North London Line (NLL) between Stratford and Canning Town to DLR operation. Four new stations will be constructed on the route including Stratford International and Stratford High Street. North of Stratford, the DLR line will be extended to Stratford International Station. Eurostar trains will not stop at Stratford International Station until after the DLR extension has been completed.
- The Olympic Park is located within an area bounded by Stratford High Street, the River Lee Navigation, Ruckholt Road and Leyton Road. The site is adjacent to and part overlaps the Stratford City Development (SCD). Construction of facilities for the 2012 Games has commenced.
- Immediately following 2012, a number of buildings will be converted for legacy uses. The Olympic Village will become housing, the Press Centre converted for other employment uses and some venues retained for public use.
- Beyond this, further significant development is expected in the Olympic Park site after 2014. This will be more clearly defined through a Masterplan due to be worked up in detail in 2010.
- It is anticipated that Cashless Boarding will be extended throughout London at some stage during the lifetime of this contract. **This is expected to lead to significant savings in running and recovery times to bus routes, and, therefore, potential resource (cycle time and PVR) savings are expected. Tenderers are required to identify and submit the level of savings per vehicle that could be achieved by reducing peak vehicle requirement, and/or how reliability targets could be revised when the Scheme is introduced.**

The above factors have been included to assist Tenderers and represents the information currently available to the Corporation. Tenderers should make their own enquiries about events which may impact upon the route and should form their own views about their likely effect upon it.

## 13. STOPPING ARRANGEMENTS

Buses operating on Route No. D8 must serve all stops on the line of route designated for the route.

## 14. TIMING POINTS & MILEAGES

### Timing Points

The required timing points (and codes) are shown in Caesar.

### Mileages for Route No. D8

Stratford City Bus Station to Crossharbour, Asda	5.6 miles
Crossharbour, Asda to Stratford City Bus Station	5.7 miles

Tenderers should note that:

- these measurements are believed to be accurate to within 0.5 miles, but no warranty or representation as to accuracy is given;
- out of service stand workings have not been measured and are not included within the above measurements;
- if alternative or additional measurements are used by the Tenderer, these must be stated in the tender submission;
- point to point measurements pertaining to recognised curtailment points or alternative terminals will be agreed with the successful Tenderer once the contract has been awarded.

## 15. VEHICLE LIVERY

All vehicles to be used on Route No. D8 from the commencement of the new Route Agreement must be in a livery that is exclusively Corporation red. The paint should be matched accurately to the colour as defined by the following manufacturer's specifications:

ICI London Bus Red P498 FPF 3

Other manufacturers should also be able to produce this specification from the ICI colour chart.

This requirement does not include the lower panels which may be in a different colour but which shall not exceed 50cm in height, or the rooftop which should be painted white so as to reduce temperatures inside the vehicle during the summer months.

The positioning and size of Operators' logos are to be agreed between the Operator and the Corporation and, where possible, these should be above the front doors on the nearside of the vehicles and above the drivers' offside cab windows.

All livery proposals must be submitted to the Contracts Tendering Manager for approval.

## 16. STANDS AND BLINDS

Tenderers should note that under normal circumstances, the specific restrictions relating to each stand will apply to the whole stand at all times. Any variation to such standing arrangements must be agreed by the Corporation. In addition, Tenderers should note the following general requirements:

- 1) Drivers MUST switch off engines during layover periods at bus stations or on stands.
- 2) No meal reliefs may be taken on any stand (on or off line of route) without the permission of the Corporation.
- 3) No crew ferry vehicles may enter any stand (on or off line of route) without the permission of the Corporation.
- 4) Destination blind displays to be used are shown under each stand description. Tenderers may suggest, within their bids, alternative blind displays.
- 5) The intermediate (also known as via) blind display to be used on the nearside of the vehicle is shown in the box below:

D8 via Canary Wharf
---------------------

For further information, please refer to Annex C of the Framework Agreement: General Conditions relating to the use of London Buses' Bus Stations and Stands.

## LONDON BUSES - ROUTE DESCRIPTION

### ROUTE D8: Stratford City Bus Station - Crossharbour, Asda

**Date of Structural Change:** 17 September 2011.

**Date of Service Change:** 17 September 2011.

**Reason for Issue:** New Tender.

#### **STREETS TRAVERSED**

**Towards Crossharbour, Asda:** Stratford City Bus Station, Unnamed Road Within Stratford City Development, Warton Road, Stratford High Street, Rick Roberts Way, Stratford High Street, Bow Interchange, Bow Road, Campbell Road, Devons Road, Violet Road, Morris Road, Chrisp Street, East India Dock Road, Newby Place, Poplar High Street, Preston's Road, Trafalgar Way, Cartier Circle, Churchill Place, The South Colonnade, Canada Square, The South Colonnade, Cabot Square, West India Avenue, Westferry Circus (Upper Level), Westferry Road, Marsh Wall, Limeharbour, East Ferry Road, Asda Access Road.

**Towards Stratford City Bus Station:** Asda Access Road, East Ferry Road, Limeharbour, Marsh Wall, Westferry Road, Westferry Circus (Upper Level), West India Avenue, Cabot Square, The North Colonnade, Canada Square, The North Colonnade, Churchill Place, Cartier Circle, Trafalgar Way, Preston's Road, Poplar High Street, Bazely Street, East India Dock Road, Chrisp Street, Morris Road, Violet Road, Devons Road, Campbell Road, Bow Road, Bow Interchange, Stratford High Street, Warton Road, Unnamed Road Within Stratford City Development, Stratford City Bus Station.

#### **STANDING AND TURNING POINTS**

##### **STRATFORD CITY BUS STATION**

Proposed stand, yet to be built.

Buses proceed from Stratford City Bus Station direct to stand, departing to Stratford City Bus Station. Set down on stand and pick up on stand.

AVAILABILITY:	At any time.
OPERATING RESTRICTIONS:	No more than 2 buses on Route D8 should be scheduled to stand at any one time.
MEAL RELIEFS:	No meal relief vehicles to stand at any time.
FERRY VEHICLES:	No ferry vehicles to park on stand at any time.
DISPLAY:	Stratford City, Bus Station.
OTHER INFORMATION:	Blind display to be confirmed with successful tenderer.

### **BOW CHURCH (from CROSSHARBOUR, ASDA)**

Private stand for two buses on south side of Bow Road, opposite Bow Church at Stop L. Buses proceed from Bow Road via Bow Interchange and Bow Road to stand, departing to Bow Road. Set down in Bow Road, at Stop M and pick up in Bow Road, at Stop K.

AVAILABILITY: At any time.  
OPERATING RESTRICTIONS: Unscheduled curtailments only  
MEAL RELIEFS: No meal relief vehicles to stand at any time.  
FERRY VEHICLES: No ferry vehicles to park on stand at any time.  
DISPLAY: Bow Church.

### **POPLAR, ALL SAINTS STATION**

Public stand for 2 buses on west side of Bazely Street commencing approximately 40 metres south of East India Dock Road and extending 20 metres south.

#### From Crossharbour, Asda.

Buses proceed from Bazely Street direct to stand, departing via Bazely Street and East India Dock Road to Newby Place. Set down in Bazely Street, at Stop Z and pick up in Newby Place, at Stop G.

#### From Stratford City Bus Station.

Buses proceed from Poplar High Street via Bazely Street to stand, departing via Bazely Street to East India Dock Road. Set down in Poplar High Street, at Stop T and pick up in East India Dock Road, at Stop A.

AVAILABILITY: At any time.  
OPERATING RESTRICTIONS: Unscheduled curtailments only.  
MEAL RELIEFS: No meal relief vehicles to stand at any time.  
FERRY VEHICLES: No ferry vehicles to park on stand at any time.  
DISPLAY: Poplar, All Saints.

### **CANARY WHARF, TRAFALGAR WAY (from CROSSHARBOUR, ASDA)**

Public stand for up to two buses on southbound carriageway of Trafalgar Way, 149 metres south of Broadwalk Place and 204 metres north of Cartier Circle.

Buses proceed from Trafalgar Way direct to stand, departing via Trafalgar Way, Cartier Circle, Churchill Place and The South Colonnade to Canada Square. Set down in Trafalgar Way and pick up in Canada Square, at Stop J.

AVAILABILITY: At any time.  
OPERATING RESTRICTIONS: Unscheduled curtailments only  
MEAL RELIEFS: No meal relief vehicles to stand at any time.  
FERRY VEHICLES: No ferry vehicles to park on stand at any time.  
DISPLAY: Canary Wharf.

## **CROSSHARBOUR, ASDA**

Private stand for 5 buses in marked bays in Asda car park.

Additional overflow stand for 2 buses on west side of East Ferry Road, between entrance and exit of Asda store.

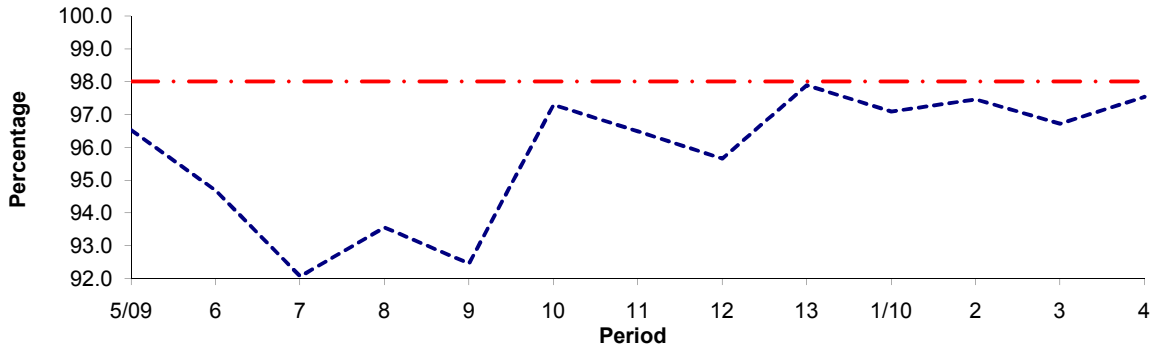
Buses proceed from Asda Access Road direct to stand, departing to Asda Access Road. Set down in Asda Access Road and pick up in Asda Access Road, at Stop CE.

AVAILABILITY:	At any time.
OPERATING RESTRICTIONS:	No more than 2 buses on Route D8 should be scheduled to stand at any one time.
MEAL RELIEFS:	No meal relief vehicles to stand at any time.
FERRY VEHICLES:	No ferry vehicles to park on stand at any time.
DISPLAY:	Crossharbour.
OTHER INFORMATION:	Toilet facilities available in Asda on Mondays to Saturdays between 0730 and 2200 and on Sundays between 1000 and 1600.

**PART B - PERFORMANCE STATISTICS**

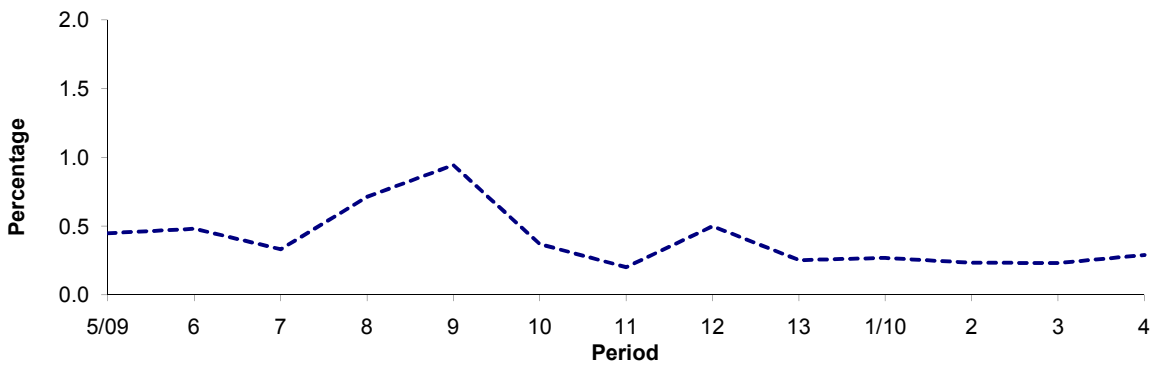
**Route D8**

**Mileage Operated**



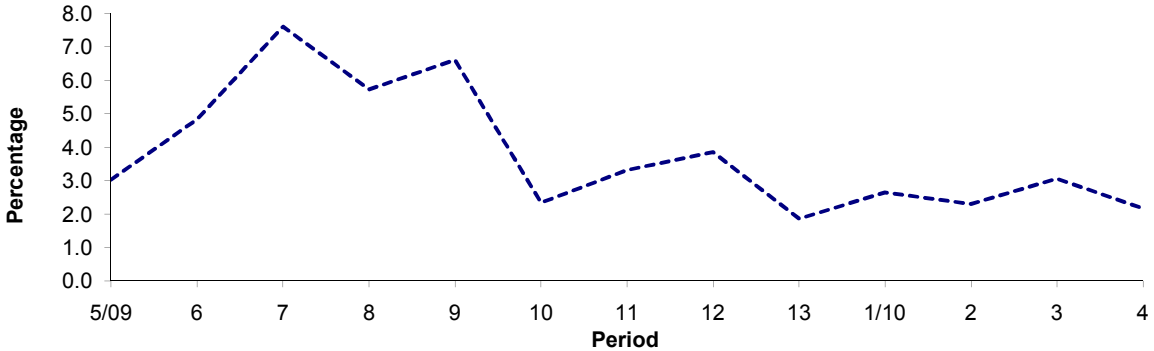
Period	5/09	6	7	8	9	10	11	12	13	1/10	2	3	4
2009/2010	96.52	94.68	92.06	93.55	92.45	97.29	96.49	95.65	97.89	97.08	97.46	96.72	97.54
Min Standard	98.00	98.00	98.00	98.00	98.00	98.00	98.00	98.00	98.00	98.00	98.00	98.00	98.00

**Deductible Mileage**



Period	5/09	6	7	8	9	10	11	12	13	1/10	2	3	4
2009/2010	0.45	0.48	0.33	0.71	0.94	0.37	0.20	0.50	0.25	0.27	0.23	0.23	0.29

**Non Deductible Mileage**

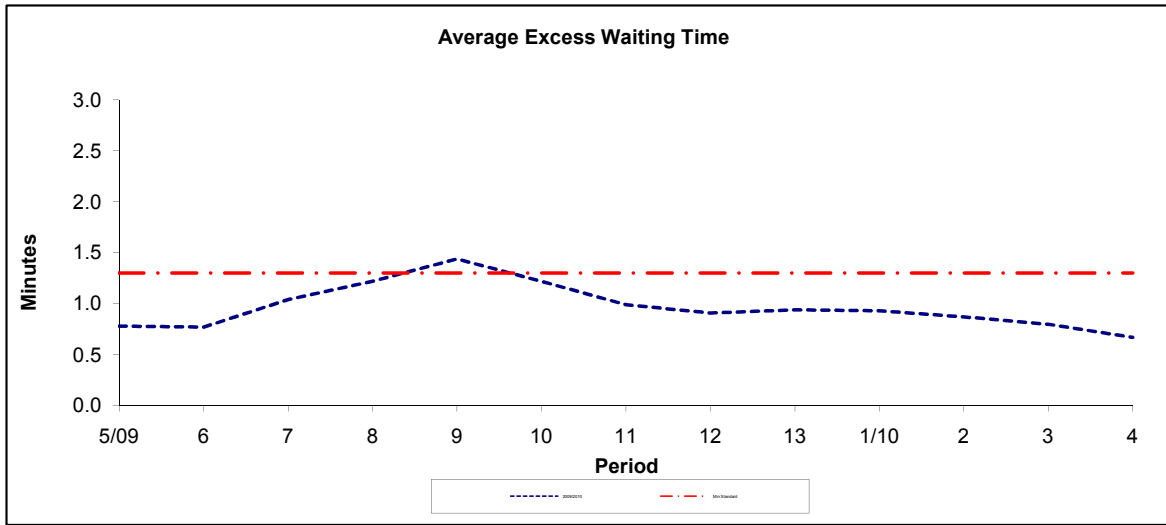


Period	5/09	6	7	8	9	10	11	12	13	1/10	2	3	4
2009/2010	3.03	4.84	7.61	5.73	6.61	2.34	3.31	3.85	1.86	2.65	2.30	3.05	2.17

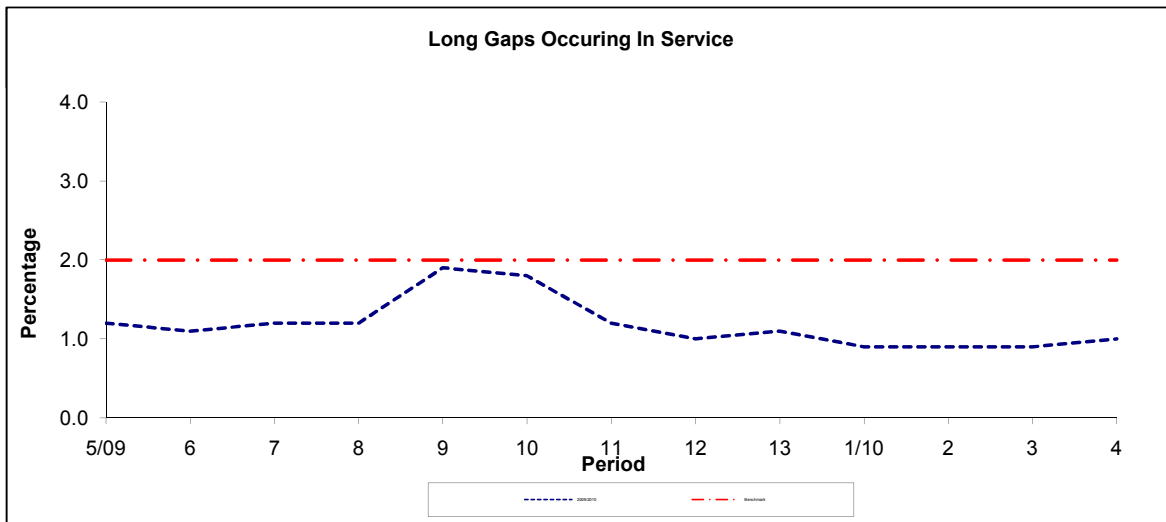
**Note :** Mileage is based on 4 weeks data

**PART B - PERFORMANCE STATISTICS**

**Route D8**



Period	5/09	6	7	8	9	10	11	12	13	1/10	2	3	4
2009/2010	0.78	0.77	1.04	1.22	1.44	1.22	0.99	0.91	0.94	0.93	0.87	0.80	0.67
Min Standard	1.30	1.30	1.30	1.30	1.30	1.30	1.30	1.30	1.30	1.30	1.30	1.30	1.30



Period	5/09	6	7	8	9	10	11	12	13	1/10	2	3	4
2009/2010	1.20	1.10	1.20	1.20	1.90	1.80	1.20	1.00	1.10	0.90	0.90	0.90	1.00
Benchmark	2.00	2.00	2.00	2.00	2.00	2.00	2.00	2.00	2.00	2.00	2.00	2.00	2.00

**Note :** Reliability is based on 12 weeks rolling data