

7. Service Specification

Route: D7

Contract Reference: QC53404

This Service Specification forms section 7 of the ITT and should be read in conjunction with the ITT document, Version 1 dated 29 September 2011.

You are formally invited to tender for the provision of the bus service detailed below and in accordance with this Service Specification. Tenderers must ensure that a Compliant Tender is submitted and this will only be considered for evaluation if all parts of the Tender documents, as set out in section 11, have been received by the Corporation by the Date of Tender. The Tender must be fully completed in the required format, in accordance with the Instructions to Tenderers. A Compliant Tender must comply fully with the requirements of the Framework Agreement; adhere to the requirements of the Service Specification; and reflect the price of operating the Services with new vehicles.

Terminus Points	Poplar and Mile End Station
Contract Basis	Incentivised
Commencement Date	17 th September 2016
Vehicle Type	87 capacity, dual door, double deck buses
Current Maximum Approved Dimensions	10.4 metres long and 2.55 metres wide
New Vehicles Mandatory	Yes
Hybrid Price Required	Yes
Sponsored Route	No
Advertising Rights	Operator
Minimum Performance Standard	Average Excess Wait Time - No more than 1.00 minutes
Extension Threshold	Average Excess Wait Time Threshold – 0.90 minutes
Minimum Operated Mileage	No less than 98.00%

The Date of Tender for this ITT is:

No later than 12 Noon on Monday 2nd November 2015

Tenderers should refer to section 3 of Part A for the Service Specification Explanatory Notes and Appendix B of section 5 for the Example Service Specification of the ITT document.

SERVICE SPECIFICATION

- 1) SERVICE SPEC - ROUTE SPECIFICATION INFORMATION
- 2) NOTES
- 3) SCHEDULE REQUIREMENTS & PINCHPOINTS
- 4) OPERATIONAL CONSIDERATIONS
- 5) ROUTE RECORD, CURRENT PERFORMANCE, QSI BY TIME OF DAY, IBUS MILEAGE & QSI POINTS

2) NOTES

Proposed Changes:

At this time, no changes are proposed to the existing service for introduction prior to the commencement of the new Route Agreement for Route No. D3.

- The Heron Quay diversion is expected to last until 2019, with buses double-running into Canary Wharf rather than diverting via Aspen Way.

Tenderers should note that the following alterations (subject to consultation) are proposed as part of this Service Specification for introduction with the new Route Agreement:

- Mondays to Fridays daytime frequencies are reduced from every 6-7 minutes (9 buses per hour) to every 8 minutes.

Tenderers are also encouraged to offer two axle vehicles with a longer wheelbase and increased capacity, subject to route constraints. Tenders offering such vehicles will be welcomed and carefully considered by the Corporation. Triaxle vehicles are not being considered by the Corporation at this time.

Operators should provide the following prices:

- 1. Annual diesel price - based on minimum 5 year contract.**
- 2. Annual hybrid price - based on minimum 5 year contract.**
- 3. Annual hybrid price - with upfront payment of capital difference between diesel and hybrid for 5 year contract.**

3) SCHEDULE REQUIREMENTS & PINCHPOINTS

3.1) MONDAY TO FRIDAY SCHEDULE REQUIREMENTS & PINCHPOINTS

Poplar, All Saints Station to Mile End Station, Burdett Road		Mile End Station, Grove Road to Poplar, All Saints Station			
First departure no later than 0435.		First departure no later than 0505.			
0430 - 0555	Every 20 minutes	0500 - 0545	Every 20 minutes		
0556 - 0640	Every 12 minutes	0546 - 0630	Every 12 minutes		
0641 - 0650	Every 10 minutes	0631 - 0640	Every 10 minutes		
0651 - 1930	Every 8 minutes	0641 - 2000	Every 8 minutes		
1931 - 2030	Every 10 minutes	2001 - 2050	Every 10 minutes		
2031 - 0045	Every 12 minutes	2051 - 0120	Every 12 minutes		
Last departure no earlier than 0040.		Last departure no earlier than 0115.			
Pinchpoints					
Canary Wharf Station	0720 - 0905	8 minutes	Millwall Dock Bridge	0710 - 0905	8 minutes
	1505 - 1635	8 minutes		1500 - 1630	8 minutes

3.2) SATURDAY AND GOOD FRIDAY SCHEDULE REQUIREMENTS & PINCHPOINTS

Poplar, All Saints Station to Mile End Station, Burdett Road		Mile End Station, Grove Road to Poplar, All Saints Station			
First departure no later than 0435.		First departure no later than 0505.			
0430 - 0615	Every 20 minutes	0500 - 0605	Every 20 minutes		
0616 - 0645	Every 15 minutes	0606 - 0650	Every 15 minutes		
0646 - 0710	Every 12 minutes	0651 - 0725	Every 12 minutes		
0711 - 0820	Every 10 minutes	0726 - 0825	Every 10 minutes		
0821 - 1840	Every 8 minutes	0826 - 1905	Every 8 minutes		
1841 - 1940	Every 10 minutes	1906 - 2015	Every 10 minutes		
1941 - 0045	Every 12 minutes	2016 - 0120	Every 12 minutes		
Last departure no earlier than 0040.		Last departure no earlier than 0115.			
Pinchpoints					
Canary Wharf Station	0910 - 1110	8 minutes	Millwall Dock Bridge	0905 - 1105	8 minutes

3.3) SUNDAY AND PUBLIC HOLIDAYS (EXCEPT GOOD FRIDAY AND CHRISTMAS DAY) SCHEDULE REQUIREMENTS & PINCHPOINTS

Poplar, All Saints Station to Mile End Station, Burdett Road		Mile End Station, Grove Road to Poplar, All Saints Station			
First departure no later than 0535.		First departure no later than 0605.			
0530 - 0715	Every 20 minutes	0600 - 0745	Every 20 minutes		
0716 - 0940	Every 15 minutes	0746 - 0945	Every 15 minutes		
0941 - 0045	Every 12 minutes	0946 - 0120	Every 12 minutes		
Last departure no earlier than 0040.		Last departure no earlier than 0115.			
Pinchpoints					
Canary Wharf Station	1000 - 1200	12 minutes	Millwall Dock Bridge	1000 - 1200	12 minutes

Tenderers must identify the cost of the Boxing Day element of this service separately.

4) OPERATIONAL CONSIDERATIONS

- 4.1) Route No. D7 should interwork Route No. 135 between Island Gardens, Westferry Road, Chapel House and Canary Wharf Station during all evenings and Sundays.
- 4.2) Route No. D7 can suffer from unpredictable traffic delays in the Mile End & Westferry Road areas.
- 4.3) Wood Wharf is a 20-acre site in the north eastern corner of the Isle of Dogs, immediately to the east of Canary Wharf. The development will include homes, shops, leisure and community facilities. This development is expected to be completed in 2019 and will have a significant impact on travel patterns in the area.
- 4.4) Crossrail will connect the City, Canary Wharf, the West End and Heathrow Airport to commuter areas east and west of the capital. Major construction of the railway began in 2010, with the first services expected to commence through the central London tunnelled section in late 2018. The full Crossrail service will be operating from Heathrow and Reading to Abbey Wood and Shenfield in late 2019. The construction impacts of Crossrail could affect Route No. D7 and it is anticipated that some passenger demand for Route No. D7 may shift to this line when it opens. Route No. D7 will be reviewed closer after the opening date.

5) ROUTE RECORD, CURRENT PERFORMANCE, QSI BY TIME OF DAY, IBUS MILEAGE & QSI POINTS

- 5.1) ROUTE RECORD
As per Busnet printout.
- 5.2) CURRENT PERFORMANCE
As per current print out.
- 5.3) QSI BY TIME OF DAY
As per current print out.
- 5.4) IBUS MILEAGE & QSI POINTS
As per current print out.

LONDON BUSES - ROUTE DESCRIPTION

ROUTE D7: Poplar, All Saints - Mile End Station

Date of Structural Change: 17 September 2016.

Date of Service Change: 17 September 2016.

Reason for Issue: New Tender.

STREETS TRAVERSED

Towards Mile End Station: Newby Place, Poplar High Street, Preston's Road, Manchester Road, Westferry Road, Westferry Circus (Upper Level), West India Avenue, Cabot Square, The North Colonnade, Canada Square, The South Colonnade, Cabot Square, West India Avenue, Westferry Circus (Upper Level), Westferry Road, Trinidad Street, Salter Street, Burdett Road, West India Dock Road, Burdett Road.

Towards Poplar, All Saints: Grove Road, Burdett Road, West India Dock Road, Westferry Road, Westferry Circus (Upper Level), West India Avenue, Cabot Square, The North Colonnade, Canada Square, The South Colonnade, Cabot Square, West India Avenue, Westferry Circus (Upper Level), Westferry Road, Manchester Road, Preston's Road, Poplar High Street, Bazely Street.

AUTHORISED STANDS, CURTAILMENT POINTS, & BLIND DESCRIPTIONS

Please note that only stands, curtailment points, & blind descriptions as detailed in this contractual document may be used.

POPLAR, ALL SAINTS STATION

Public stand for 2 buses on west side of Bazely Street commencing approximately 40 metres south of East India Dock Road and extending 20 metres south.

Buses proceed from Bazely Street direct to stand, departing via Bazely Street and East India Dock Road to Newby Place. Set down in Bazely Street, at Stop Z (BP782 - Poplar / All Saints Church, Last Stop on LOR: BP782 - Poplar / All Saints Church) and pick up in Newby Place, at Stop G (34215 - Poplar / All Saints Church, First Stop on LOR: 34215 - Poplar / All Saints Church).

AVAILABILITY:	At any time.
OPERATING RESTRICTIONS:	No more than 2 buses on Route D7 should be scheduled to stand at any one time.
MEAL RELIEFS:	No meal relief vehicles to stand at any time.
FERRY VEHICLES:	No ferry vehicles to park on stand at any time.
BLIND DISPLAY:	Poplar, All Saints.
OTHER INFORMATION:	Toilet facilities available in Texaco petrol station.

CANARY WHARF STATION

From Mile End Station.

Buses proceed from Canada Square departing to Canada Square. Set down in Canada Square, at stop H (BP3588 - Canada Square North, Last Stop on LOR: BP3588 - Canada Square North) and pick up in Canada Square, at stop J (R0314 - Canada Square South, First Stop on LOR: R0314 - Canada Square South).

From Poplar, All Saints.

Buses proceed from The South Colonnade via Cabot Square departing to The North Colonnade. Set down in The South Colonnade, at stop G (BP2355 - Canary Wharf Station <> [dlr], Last Stop on LOR: BP2355 - Canary Wharf Station <> [dlr]) and pick up in The North Colonnade, at stop F (R0315 - Canary Wharf Station <> [dlr], First Stop on LOR: R0315 - Canary Wharf Station <> [dlr]).

AVAILABILITY:	At any time.
OPERATING RESTRICTIONS:	Turning Point Only - Buses must not stand
BLIND DISPLAY:	Canary Wharf.

LIMEHOUSE, BURDETT ROAD (from Poplar, All Saints)

Private stand for two buses in bus station at the junction of East India Dock Road and Burdett Road, commencing 20 metres east of eastern kerblines of Burdett Road and extending 30 metres south.

Buses proceed from Salter Street via West India Dock Road, East India Dock Road and Limehouse Bus Station to stand, departing via Limehouse Bus Station to Burdett Road. Set down in Salter Street, at Stop WL (BP638 - Salter Street, Last Stop on LOR: BP638 - Salter Street) and pick up in Burdett Road, at Stop WR (R0780 - East India Dock Road, First Stop on LOR: R0780 - East India Dock Road).

AVAILABILITY: At any time.
OPERATING RESTRICTIONS: Unscheduled curtailments only.
MEAL RELIEFS: No meal relief vehicles to stand at any time.
FERRY VEHICLES: No ferry vehicles to park on stand at any time.
BLIND DISPLAY: Limehouse, Burdett Road.

MILE END STATION, GROVE ROAD

Private stand for six buses in bus station on west side of Grove Road, commencing 55 metres north of Mile End Road and extending 30 metres on offside and 30 metres on nearside.

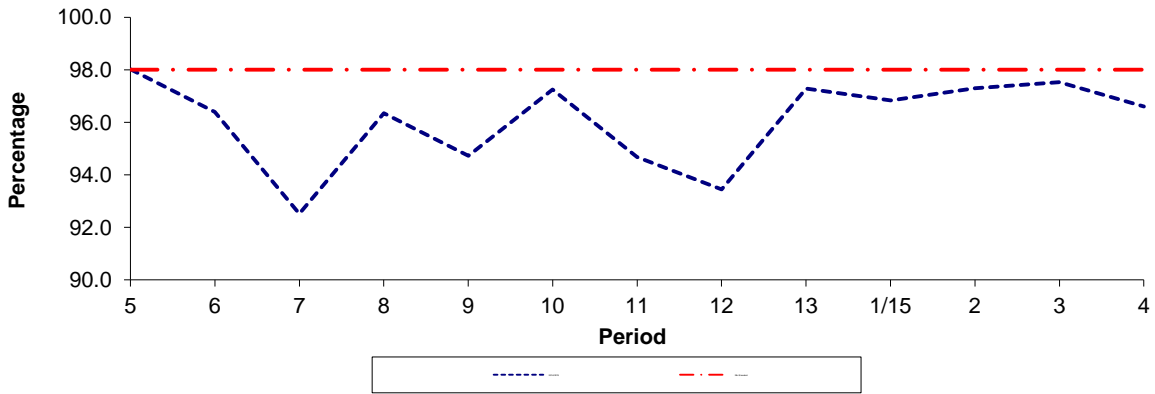
Buses proceed from Burdett Road via Grove Road and Mile End Bus Station to stand, departing via Mile End Bus Station to Grove Road. Set down in Burdett Road, at Stop B (1423 - Mile End Station <>, Last Stop on LOR: 1423 - Mile End Station <>) and pick up in Grove Road, at Stop H (1422 - Mile End Station <>/ Bow Road, First Stop on LOR: 1422 - Mile End Station <>/ Bow Road).

AVAILABILITY: At any time.
OPERATING RESTRICTIONS: No more than 2 buses on Route D7 should be scheduled to stand at any one time.
MEAL RELIEFS: No meal relief vehicles to stand at any time.
FERRY VEHICLES: No ferry vehicles to park on stand at any time.
BLIND DISPLAY: Mile End.
OTHER INFORMATION: No toilet facilities available.

PART B - PERFORMANCE STATISTICS

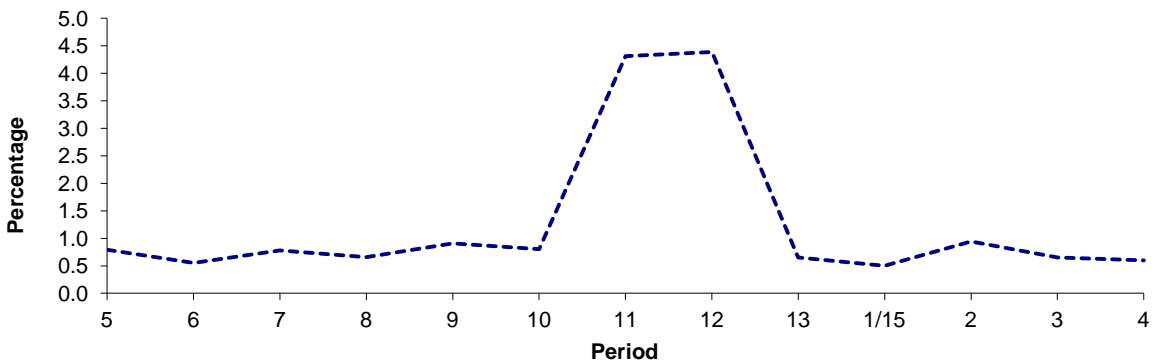
Route D7

Mileage Operated



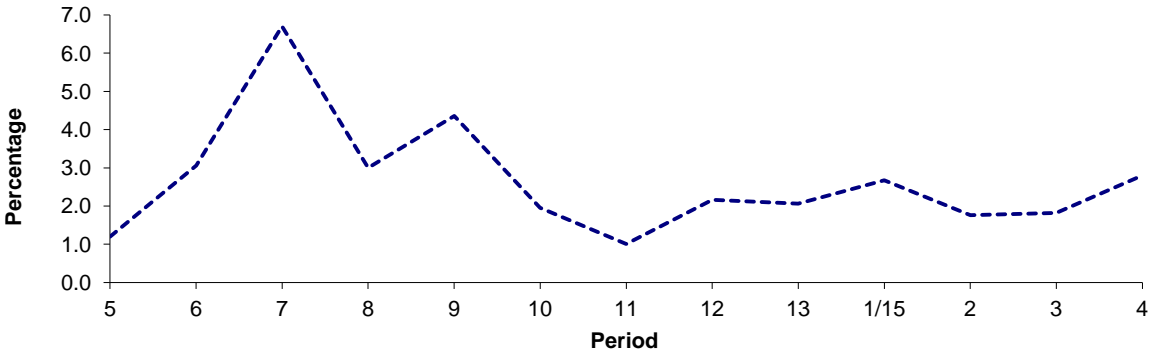
Period	5	6	7	8	9	10	11	12	13	1/15	2	3	4
2014/2015	98.01	96.39	92.52	96.34	94.73	97.25	94.68	93.45	97.29	96.83	97.30	97.53	96.60
Min Standard	98.00	98.00	98.00	98.00	98.00	98.00	98.00	98.00	98.00	98.00	98.00	98.00	98.00

Deductible Mileage



Period	5	6	7	8	9	10	11	12	13	1/15	2	3	4
2014/2015	0.79	0.55	0.78	0.66	0.91	0.80	4.31	4.39	0.65	0.50	0.94	0.65	0.60

Non Deductible Mileage

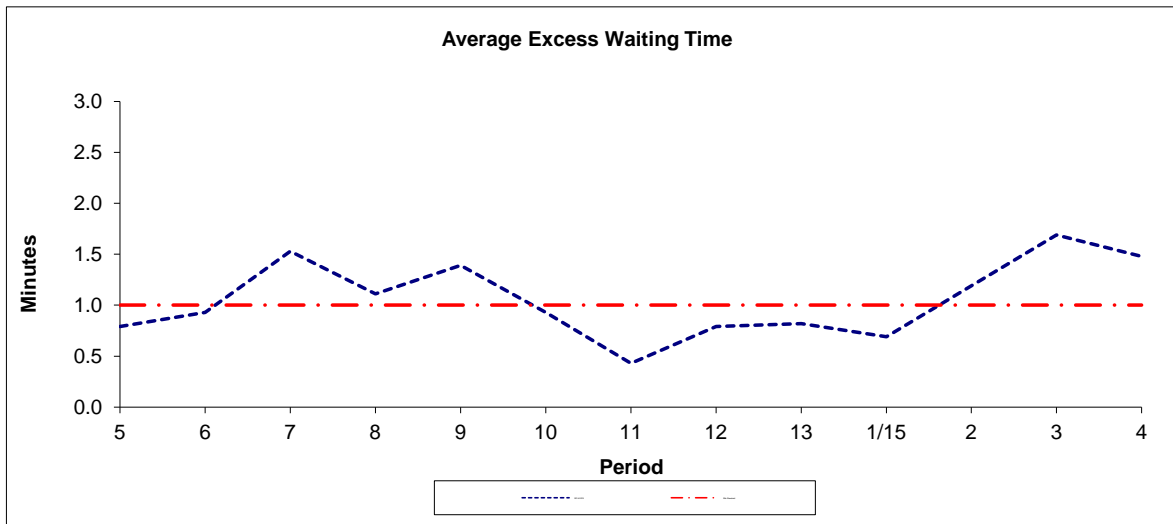


Period	5	6	7	8	9	10	11	12	13	1/15	2	3	4
2014/2015	1.20	3.06	6.70	3.00	4.36	1.95	1.01	2.16	2.06	2.67	1.76	1.82	2.80

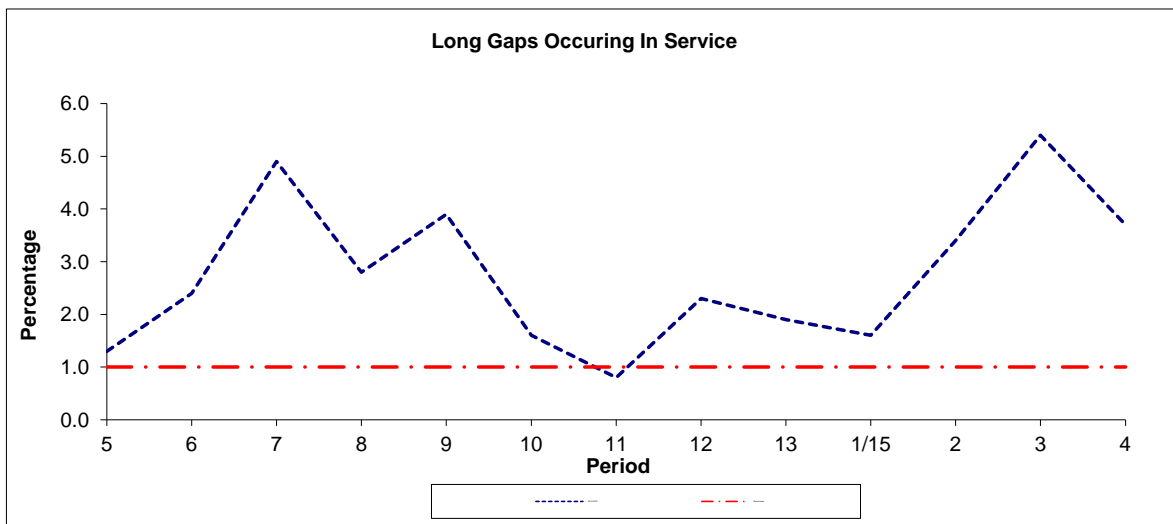
Note : Mileage is based on 4 weeks data
 Deductible Mileage was adversely affected by industrial action in periods 11 and 12 14/15.

PART B - PERFORMANCE STATISTICS

Route D7



Period	5	6	7	8	9	10	11	12	13	1/15	2	3	4
2014-2015	0.79	0.93	1.53	1.11	1.39	0.93	0.43	0.79	0.82	0.69	1.19	1.69	1.48
Min Standard	1.00	1.00	1.00	1.00	1.00	1.00	1.00	1.00	1.00	1.00	1.00	1.00	1.00



Period	5	6	7	8	9	10	11	12	13	1/15	2	3	4
2014-2015	1.3	2.4	4.9	2.8	3.9	1.6	0.8	2.3	1.9	1.6	3.4	5.4	3.7
Benchmark	1.0	1.0	1.0	1.0	1.0	1.0	1.0	1.0	1.0	1.0	1.0	1.0	1.0

Note : Reliability is actual performance under full iBus (4 weeks data).
 Minimum Standards and Benchmarks are those applicable under the new contract.

ROUTE D7 - FULL IBUS RESULTS BY TIME OF DAY
QUARTER 2 14/15 TO QUARTER 1 15/16 (21/06/14 - 26/06/15)

MONDAY - FRIDAY

Time Range	Expected Buses	Observed Buses	Observed Buses (%)	SWT (mins)	EWT (mins)	AWT (mins)	Probability of Waiting < 10 mins (%)	Probability of Waiting 10-20 mins (%)	Probability of Waiting 20-30 mins (%)	Probability of Waiting > 30 mins (%)	Long Gaps (%)	Maximum Gap (mins)
05:00 - 07:00	24,428.	24,411.	99.9	7.32	0.67	8.00	75.0	22.5	2.2	0.2	0.1	57
07:00 - 10:00	80,582.	79,158.	98.2	3.41	1.15	4.56	91.2	8.0	0.7	0.1	3.4	54
10:00 - 13:00	80,698.	81,989.	101.6	3.33	0.93	4.26	93.8	5.7	0.4	0.1	2.2	58
13:00 - 16:00	79,586.	80,211.	100.8	3.39	1.03	4.41	92.4	7.2	0.3	0.1	2.5	54
16:00 - 19:00	80,591.	77,368.	96.0	3.35	1.59	4.94	88.2	10.5	1.0	0.3	5.3	72
19:00 - 22:00	59,990.	60,521.	100.9	4.42	1.25	5.67	83.5	14.9	1.3	0.3	3.2	77
22:00 - 24:00	29,843.	29,689.	99.5	5.96	0.99	6.95	75.9	22.1	1.7	0.3	0.9	63
All Locations Summary	435,718.	433,347.	99.5	3.73	1.18	4.91	89.1	9.9	0.8	0.2	3.2	77

SATURDAY

Time Range	Expected Buses	Observed Buses	Observed Buses (%)	SWT (mins)	EWT (mins)	AWT (mins)	Probability of Waiting < 10 mins (%)	Probability of Waiting 10-20 mins (%)	Probability of Waiting 20-30 mins (%)	Probability of Waiting > 30 mins (%)	Long Gaps (%)	Maximum Gap (mins)
05:00 - 07:00	3,854.	3,935.	102.1	9.17	0.46	9.63	59.4	36.3	3.8	0.5	0.1	55
07:00 - 10:00	11,792.	12,915.	109.5	4.63	0.32	4.94	91.6	8.2	0.2	0.0	0.3	47
10:00 - 13:00	13,521.	14,294.	105.7	4.01	0.61	4.62	92.3	7.4	0.3	0.0	1.0	32
13:00 - 16:00	13,631.	14,061.	103.2	3.99	1.18	5.18	87.6	11.5	0.9	0.1	2.8	37
16:00 - 19:00	13,496.	14,087.	104.4	4.01	1.12	5.13	87.8	11.4	0.7	0.1	2.4	47
19:00 - 22:00	9,973.	10,670.	107.0	5.33	0.62	5.95	82.1	17.1	0.7	0.1	0.7	48
22:00 - 24:00	6,067.	6,026.	99.3	5.98	0.78	6.75	77.1	21.5	1.3	0.1	0.6	38
All Locations Summary	72,334.	75,988.	105.1	4.47	0.83	5.30	87.3	12.0	0.7	0.1	1.6	55

SUNDAY AND BANK HOLIDAYS

Time Range	Expected Buses	Observed Buses	Observed Buses (%)	SWT (mins)	EWT (mins)	AWT (mins)	Probability of Waiting < 10 mins (%)	Probability of Waiting 10-20 mins (%)	Probability of Waiting 20-30 mins (%)	Probability of Waiting > 30 mins (%)	Long Gaps (%)	Maximum Gap (mins)
05:00 - 07:00	2,336.	2,422.	103.7	10.02	0.15	10.16	63.9	30.6	4.7	0.8	2.6	46
07:00 - 10:00	7,620.	8,949.	117.4	7.81	-0.22	7.58	70.5	27.7	1.6	0.2	0.1	50
10:00 - 13:00	9,977.	11,090.	111.2	5.94	0.15	6.09	82.1	17.2	0.5	0.1	0.3	42
13:00 - 16:00	10,044.	11,069.	110.2	5.93	0.23	6.16	81.1	18.2	0.5	0.1	0.3	53
16:00 - 19:00	9,968.	11,013.	110.5	5.94	0.27	6.21	80.3	19.0	0.6	0.1	0.3	41
19:00 - 22:00	10,176.	11,118.	109.3	5.95	0.41	6.36	79.3	19.9	0.6	0.1	0.3	57
22:00 - 24:00	6,810.	6,769.	99.4	5.98	0.56	6.53	78.5	20.8	0.7	0.0	0.2	59
All Locations Summary	56,931.	62,430.	109.7	6.20	0.22	6.43	79.3	19.8	0.8	0.1	0.3	59

ALL DAYS

Time Range	Expected Buses	Observed Buses	Observed Buses (%)	SWT (mins)	EWT (mins)	AWT (mins)	Probability of Waiting < 10 mins (%)	Probability of Waiting 10-20 mins (%)	Probability of Waiting 20-30 mins (%)	Probability of Waiting > 30 mins (%)	Long Gaps (%)	Maximum Gap (mins)
05:00 - 07:00	30,618.	30,768.	100.5	7.69	0.62	8.31	72.7	24.5	2.6	0.3	0.3	57
07:00 - 10:00	99,994.	101,022.	101.0	3.73	1.02	4.74	90.2	9.0	0.7	0.1	3.0	54
10:00 - 13:00	104,196.	107,373.	103.0	3.74	0.79	4.53	92.2	7.3	0.4	0.1	1.8	58
13:00 - 16:00	103,261.	105,341.	102.0	3.75	0.97	4.71	90.5	9.0	0.5	0.1	2.3	54
16:00 - 19:00	104,055.	102,468.	98.5	3.67	1.41	5.08	87.4	11.4	1.0	0.2	4.5	72
19:00 - 22:00	80,139.	82,309.	102.7	4.72	1.07	5.78	82.9	15.8	1.1	0.2	2.5	77
22:00 - 24:00	42,720.	42,484.	99.4	5.96	0.90	6.86	76.4	21.9	1.5	0.2	0.7	63
All Locations Summary	564,983.	571,765.	101.2	4.06	1.05	5.11	87.9	11.1	0.8	0.1	2.8	77

Transport for London - QSI Points and Live Mileage List

v2.0 - Mileage directly imported from Caesar

TRANCHE 534

Route D7

Service change 38508

Date : 29/04/2014

QSI Points are highlighted

Reason for Issue

Mileage update

Assumes diversion for closure of Heron Quay until 2019

OUT DIRECTION				
Timing Point Code	Stop Number	Stop Name	Metres	Miles
POPRNP	34215	Poplar / All Saints Church		
	34214	Poplar High Street / Blackwall	323	0.20
	R0313	Aspen Way	483	0.30
	BP167	Coldharbour	292	0.18
CUBTQU	15157	Stewart Street	507	0.32
	15159	St John's Park	251	0.16
	15160	Cubitt Town School	293	0.18
	16349	Pier Street	264	0.16
	16348	Isle Of Dogs Police Station	335	0.21
IGNSSN	16347	Island Gardens Station	300	0.19
	15143	East Ferry Road	212	0.13
IGNSWC	15141	Langbourne Place	322	0.20
	15139	Harbinger School	331	0.21
	15137	St Edmund's School	304	0.19
	15135	Crews Street	199	0.12
MILLDB	559	Arnhem Wharf Primary School	220	0.14
	15133	Sir John Mcdougal Gardens	249	0.15
	15131	Barkantine Clinic / Hutchings Stree	136	0.08
WFRYBS	3201	Byng Street	225	0.14
	15129	Marsh Wall / Heron Quay	221	0.14
	LE186	West India Avenue	692	0.43
	R0315	Canary Wharf Station	295	0.18
	BP3588	Canada Square North	214	0.13
	R0314	Canada Square South	225	0.14
CNWFSN	BP2355	Canary Wharf Station	175	0.11
	LE190	West India Avenue	289	0.18
	LE193	Westferry Circus	148	0.09
	BP1231	Westferry Station	454	0.28
	BP638	Salter Street	108	0.07
LIMEBR	25270	East India Dock Road	357	0.22
	14495	Pixley Street	275	0.17
	27785	St Paul's Way	165	0.10
	20927	Turners Road	154	0.10
	14487	Eric Street	426	0.26
	14485	Bow Common Lane	129	0.08
MNSNBR	1423	Mile End Station	178	0.11

Total Route Mileage - Out Director	9751	6.06
	Metres	Miles

BACK DIRECTION				
Timing Point Code	Stop Number	Stop Name	Metres	Miles
MNSNGR	1422	Mile End Station / Bow Road		
	1424	Mile End Station	177	0.11
	14488	Eric Street	448	0.28
	R0381	Mile End Park Leisure Centre	182	0.11
	R0781	St Paul's Way	188	0.12
	14496	Pixley Street	320	0.20
LIMEBR	R0780	East India Dock Road	309	0.19
	36875	Limehouse Police Station	152	0.09
	15128	Westferry Station	345	0.21
	LE186	West India Avenue	495	0.31
CNWFSN	R0315	Canary Wharf Station	295	0.18
	BP3588	Canada Square North	214	0.13
	R0314	Canada Square South	225	0.14
	BP2355	Canary Wharf Station	175	0.11
	BP2356		305	0.19
	15130		402	0.25
WFRYCS	3200	Cuba Street	197	0.25
	15132	Barkantine Clinic / Hutchings Stree	269	0.17
	15134	Sir John Mcdougal Gardens	257	0.16
MILLDB	13418	Arnhem Wharf Primary School	264	0.16
	15136	Crews Street / The Space Theatre	240	0.15
	15138	St Edmund's School	231	0.14
	15140	Harbinger School	232	0.14
	16353	Maconochies Road	167	0.10
IGNSWE	15142	East Ferry Road	326	0.20
IGNSSN	BP1802	Island Gardens Station	312	0.19
	15144	George Green's School	156	0.10
	15162	Isle Of Dogs Police Station	278	0.17
	15161	Pier Street	250	0.16
	1684	Cubitt Town School	297	0.18
	15158	St John's Park	340	0.21
CUBTQU	15156	Stewart Street	144	0.09
	BP1187	The Blue Bridge	336	0.21
	15154	Coldharbour	270	0.17
	15150	Aspen Way	231	0.14
	BP5409	Poplar High Street / Blackwall	396	0.25
POPRAS	BP782	Poplar / All Saints Church	266	0.17

Total Route Mileage - Back Directio	9691	6.15
	Metres	Miles